

Proposed SM Wright Project IH 45/SM WRIGHT

Texas Department of Transportation



Dallas District

Halff Associates
Baker Consulting Associates

March 30, 2010



- Why is this project needed?
- What is the process?
- How has the community been involved?
- What is being studied?
- Next Steps



Agenda



Project Need & Overview



To develop concepts for the SM Wright Project with a focus on increased safety through removing the CF Hawn to SM Wright bend, improved mobility and efficiency, while enhancing community connectivity and aesthetics.





SM Wright Project Scope





- Current 6-Lane freeway & frontage roads serve over 110,000 vehicles per day (vpd).
- Diversion to I-45 and Trinity Parkway reduces SM Wright traffic to about 40,000 vpd.
- Traffic reduction no longer needs freeway or bridges on SM Wright.
- Remaining local & through traffic volume requires only 6-lane signalized arterial.
- No added (new) right-of-way is anticipated for SM Wright. ROW is anticipated for US 175 connection to IH 45.
- Design of SM Wright interchange at SH 310 is part of this project.


SM Wright Fundamentals

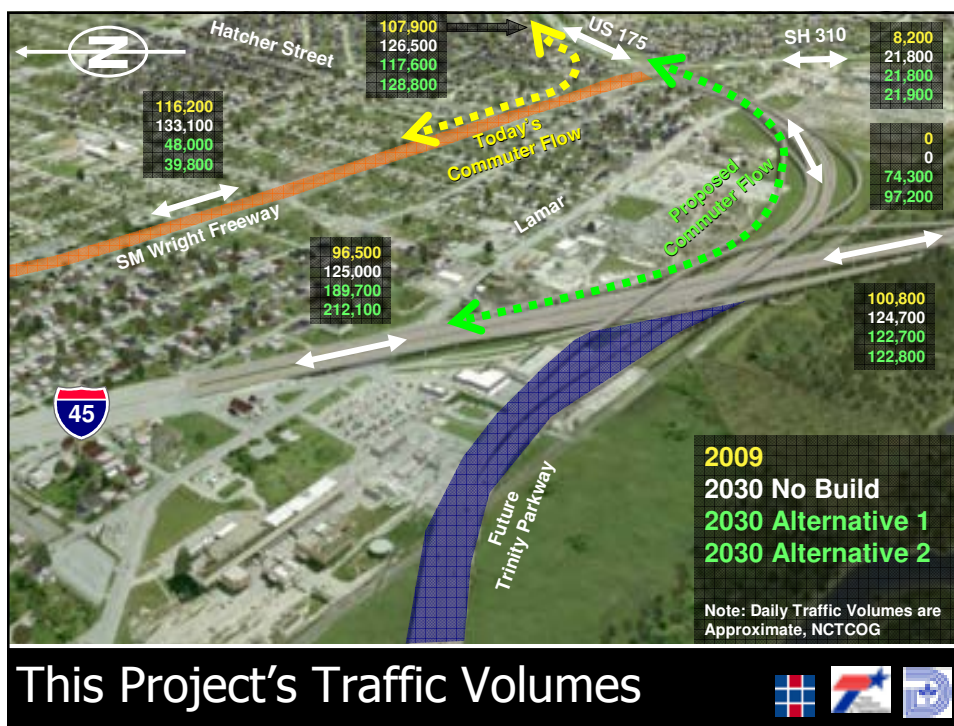



Proposed Project Concept

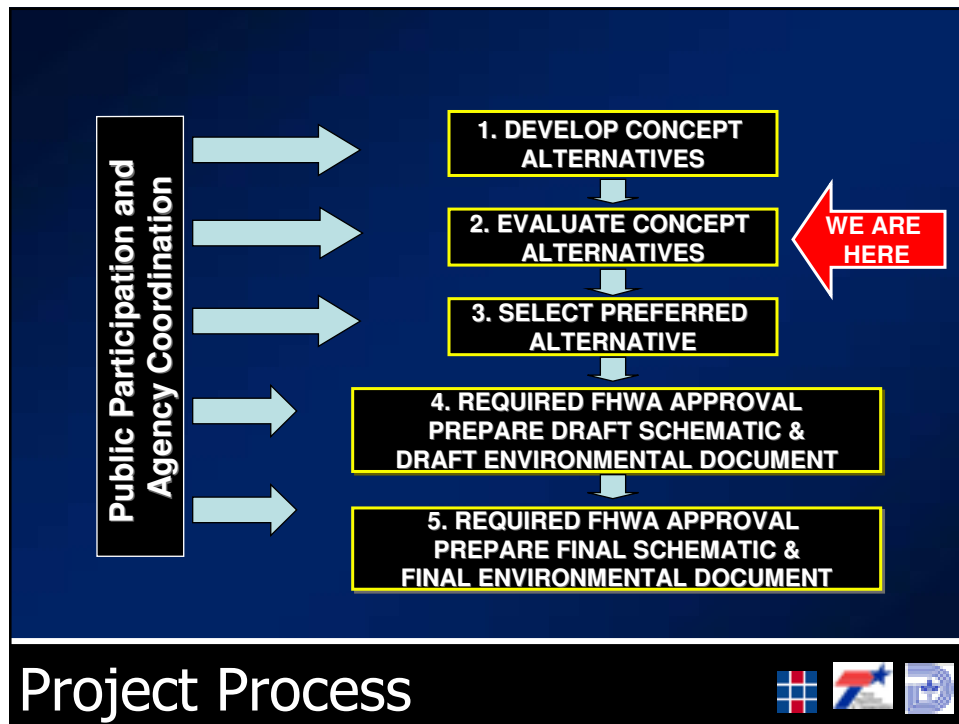
- Add direct connecting ramps between US 175 CF Hawn Freeway & IH 45
- Improve IH 45 capacity to facilitate new direct connecting CF Hawn ramps
- Provide access between CF Hawn & SM Wright through a grade separated interchange
- Convert SM Wright to a low speed, signalized, pedestrian-friendly, landscaped arterial
- Spacing provided to allow proposed Trinity Parkway connection and extension

This Project's Traffic Flow





Project Process



Community Involvement

Adjacent Neighborhood Associations

South Boulevard/Park Row Historic District	Queen City Neighborhood Association
Wendelkin/Driscoll Neighborhood Association	Forest Heights Neighborhood Association
Ideal Neighborhood Association	

Nonprofit Organizations

SouthFair Community Development Corporation	Forest Heights Neighborhood Development Corp.
Clean South Dallas	Dallas Black Chamber of Commerce
Innercity Community Development Corp.	T. R. Hoover CDC

Other Key Stakeholders

New Hope Baptist Church	Greater New Zion Baptist Church
Peoples Missionary Baptist Church	Grace & Mercy Missionary Baptist Church
South Dallas Baptist Church	St. Philip's School and Community Center
South Dallas Nursing Home	Major commercial property owners

Public Agencies

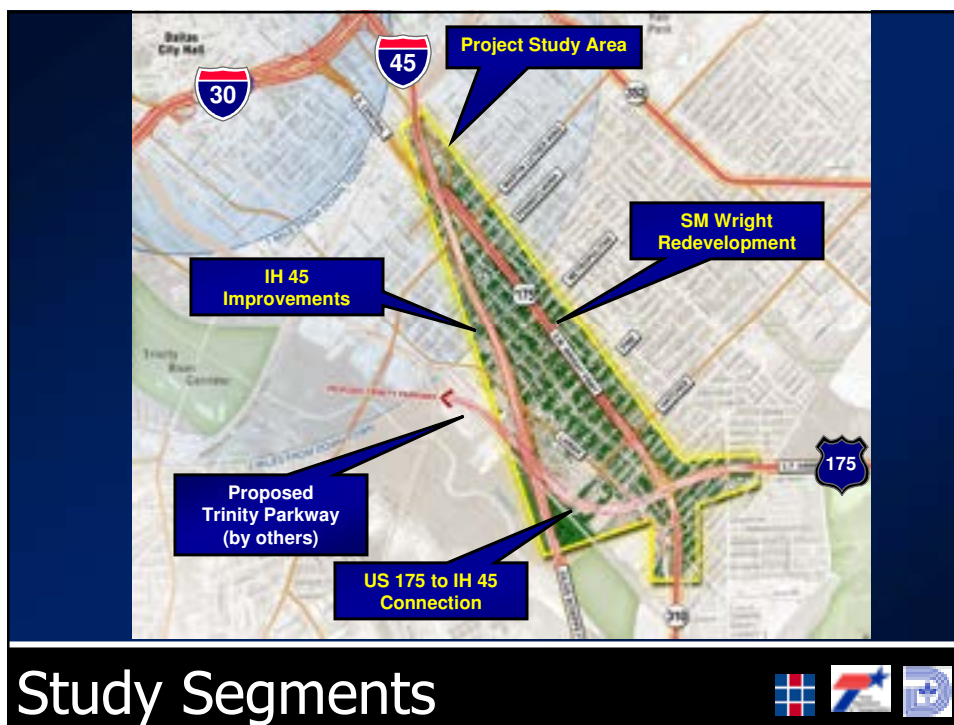
NTTA	DHA – Park Manor
DART	DHA – Turner Courts
City of Dallas (PW & T, PARD, DPD)	DHA – Rhoades Terrace
TxDOT	MLK, Jr. Elementary School (DISD)
NCTCOG	H.S. Thompson Elementary School (DISD)

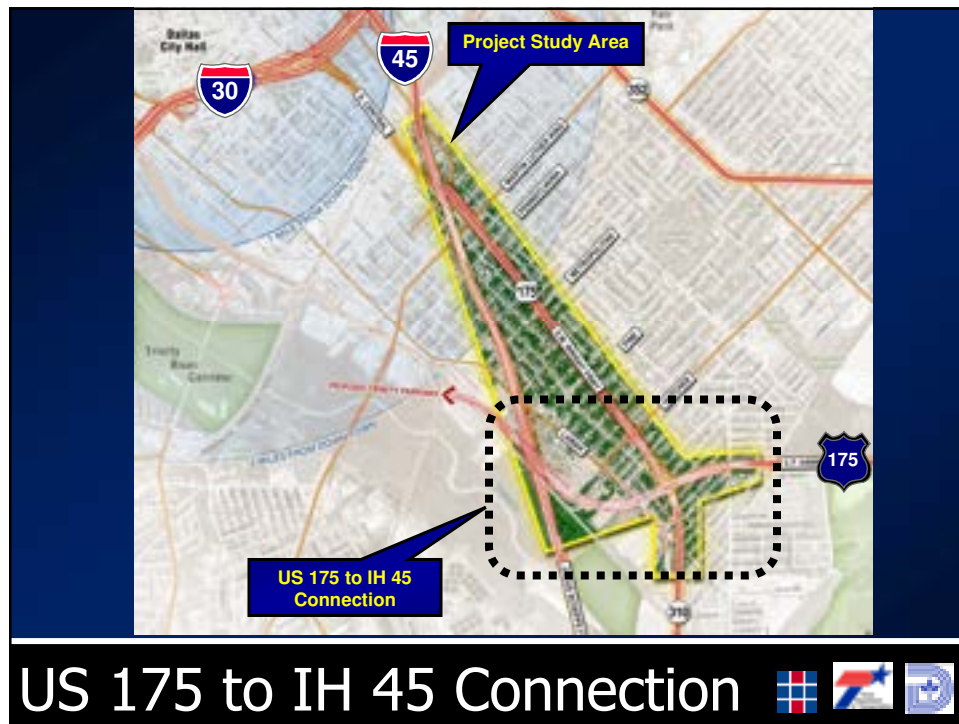
Invited Community Participants

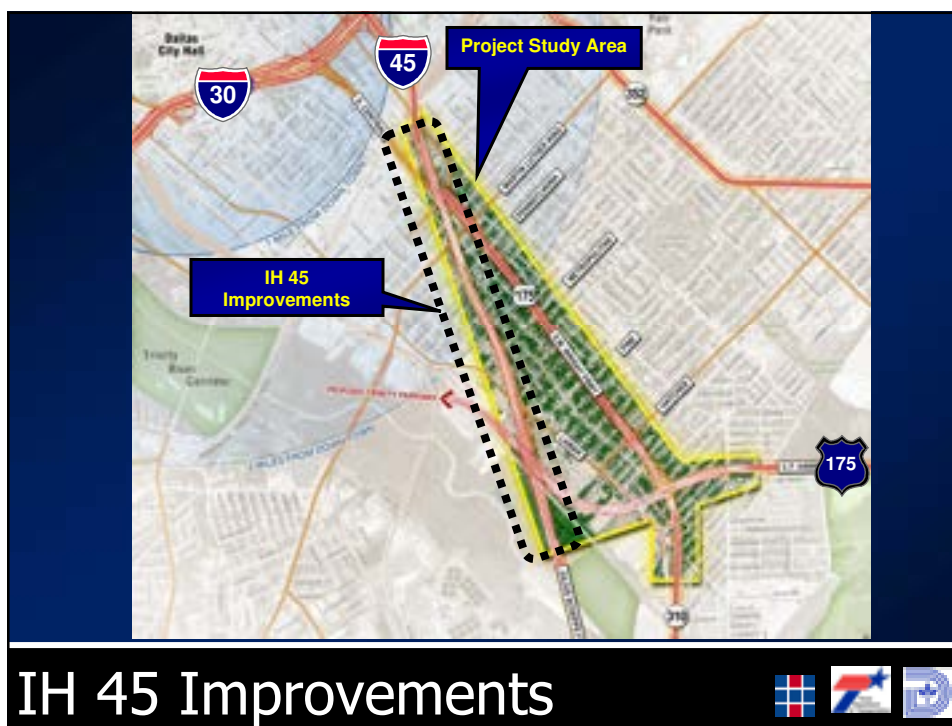
- Dallas Council **Trinity River Committee Briefing** - February 5, 2008
- SM Wright **1st Stakeholder** Work Group Meeting – Mar. 31, 2008
- SM Wright **2nd Stakeholder** Work Group Meeting – Sept. 9, 2008
- City of **Dallas Public Meeting** hosted by Councilmember Davis – Oct. 14, 2008
- SM Wright **3rd Stakeholder** Work Group Meeting – Dec 9, 2008
- SM Wright **4th Stakeholder** Work Group Meeting – Jan. 13, 2009
- Dallas Council **Trinity River Committee Briefing** - April 21, 2009
- SM Wright **TxDOT Public Meeting** – April 28, 2009
- Trinity Pkwy **NTTA Public Hearing** – May 5, 2009
- SM Wright Project **Elected Officials Briefing** – March 8, 2010
- SM Wright Project **TxDOT Public Meeting** – March 30, 2010
Topic: SM Wright Final Design, US 175 and IH 45 Alternatives Analysis

Community Involvement

What is Being Studied?





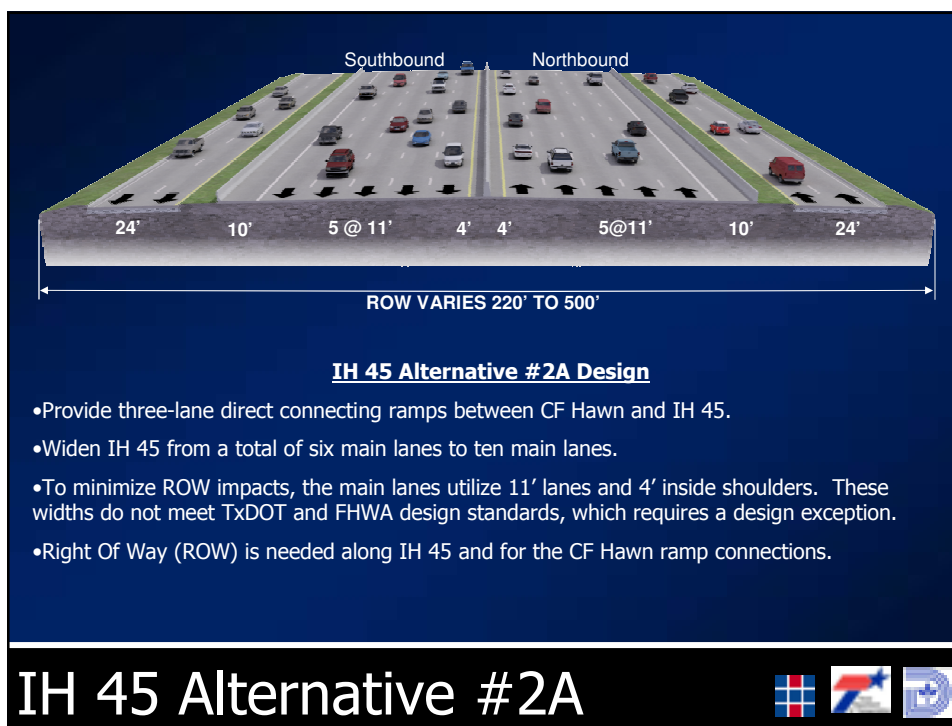


IH 45 Improvements



IH 45 Alternative #1





IH 45 ALTERNATIVES – ROW IMPACT COMPARISON

IH 45 Alt. #	ROW Need along IH 45 (acres)	# of Parcels Impacted	Potentially Displaced Buildings	Historical District Impacts
1	0.6 acres	4 - parcels	0 displacements	No impact
2A	2.6 acres	31 – parcels	•2 residential bldgs (includes 1 garage) •4 commercial bldgs	No impact
2B	4.1 acres	39 – parcels	•15 residential bldgs (includes 7 garages) •5 commercial bldgs	No impact

The Right of Way (ROW) impacts for the ramp connections between IH 45 and CF Hawn are the same for all IH 45 alternatives. The ramp connection impacts include:

- Approx. 34 acres of ROW need (no impacts to existing historical districts)
- 42 parcels impacted
- 8 potentially displaced commercial buildings
- 9 potentially displaced residential buildings (includes 3 garage/shed structures)

Comparison of Alternatives



SM Wright Redevelopment



SM WRIGHT REDEVELOPMENT OPTIONS PREVIOUSLY DISCUSSED:

- Roadway Alignment
 - Split Alignment
 - Single Alignment – one side
 - Single Alignment – meandering
- Connections & Access
 - Through Streets
 - Cul-de-Sacs
 - Tee Intersections
- Residual Land Use
 - Recreation/Park or Green Space
 - Parking
 - Redevelopment
 - No new right of way



Concept Development



Existing Land Use and Crossings



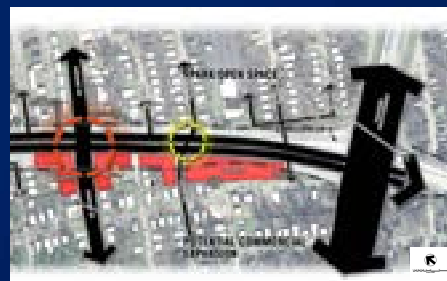
Meandering Alignment



Turtle Creek Boulevard

SM WRIGHT REDEVELOPMENT

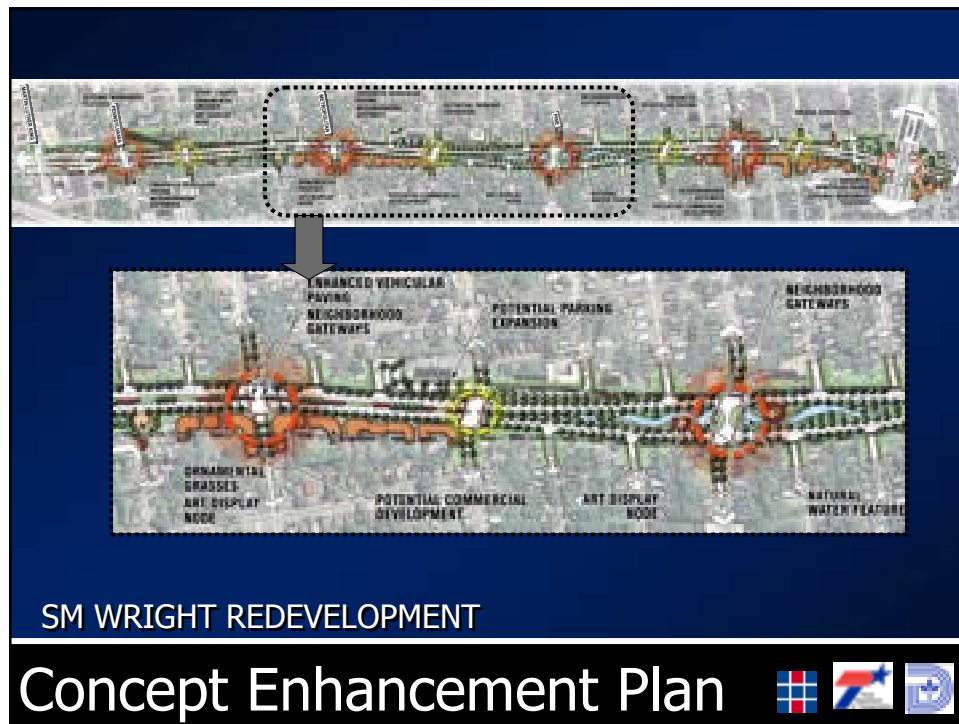
Preferred Concept



SM WRIGHT REDEVELOPMENT

Concept Access/Residual Land





SM Wright Freeway

Convert to Low-speed Arterial



Existing



Proposed

SM WRIGHT REDEVELOPMENT South at Metropolitan

Concept Aesthetics









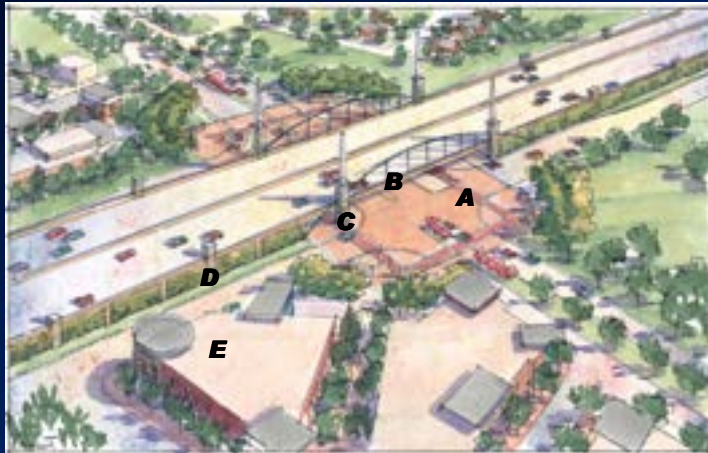


SM WRIGHT REDEVELOPMENT

Concept Enhancement Plan



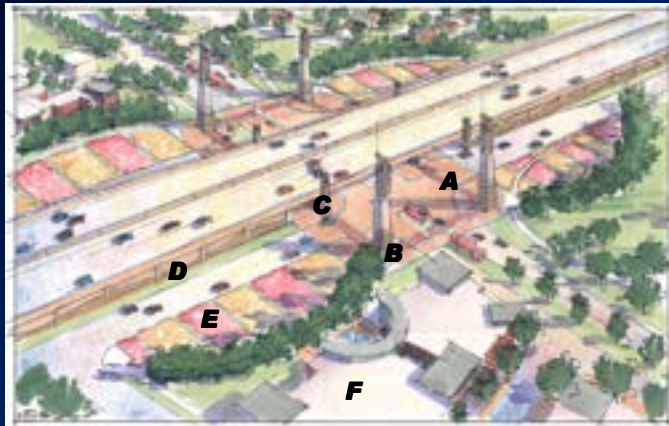




Option 1 Design Elements

- | | |
|---|-------------------------------------|
| A) Enhanced Vehicular Paving | D) Vegetative Greenwall |
| B) Gateway Arch | E) Potential Commercial Development |
| C) Major/Minor Decorative Gateway Monuments | |

SM Wright / CF Hawn Intersection



Option 2 Design Elements

- | | |
|-----------------------------------|-------------------------------------|
| A) Enhanced Vehicular Paving | D) Form Line Concrete |
| B) Iconic Gateway Entry Monuments | E) Ornamental Grass Plantings |
| C) Decorative Gateway Monuments | F) Potential Commercial Development |

SM Wright / CF Hawn Intersection







- S.M. Wright Project Schematic & Environmental Development – 4-6 month process
- S.M. Wright Project Schematic & Environmental Review & Approval – 10-12 month process
- S.M. Wright Public Hearing – Summer 2011
- FHWA Approval (anticipated) – Fall 2011
- S.M. Wright Project Construction – 2012-2014 (Dependent on Funding)
- Adjacent Corridor Redevelopment (City of Dallas) - Ongoing



Next Steps



Tim Nesbitt, P.E.
TxDOT Project Manager

Texas Department of Transportation
P.O. Box 133067
Dallas, Texas 75313-3067
Phone: 214-320-6245
Fax: 214-320-4470

Or visit the project web site at:
www.smwrightproject.org

For More Information...

