

# S. M. WRIGHT PHASE II PROJECT

## Traffic Detours

### Southbound IH 45 Exit Ramp to Martin Luther King Jr. Blvd.

The southbound IH 45 exit ramp from IH 45 to Martin Luther King Jr. Blvd. is currently closed in order to construct the new IH 45 exit ramp to Martin Luther King Jr. Blvd. on the west side of IH 45.

#### Detour

Southbound traffic will continue straight on IH 45 and take Lamar St. exit ramp (Exit 283A), then take a right on Botham Jean Blvd., then take a right on Forest Ave. to continue along Martin Luther King Jr. Blvd.



Visit [smwrightproject.com/contact-us](http://smwrightproject.com/contact-us) to sign up to receive email updates or call 214.390.7130.



# S. M. WRIGHT PHASE II PROJECT

## Traffic Detours

### Northbound IH 45 Entrance Ramp from Martin Luther King Jr. Blvd.

The northbound IH 45 entrance ramp from Martin Luther King Jr. Blvd. is currently closed in order to construct a new entrance ramp on the east side of IH 45.

#### Detours

Eastbound traffic will take a right on Colonial Ave. and continue along the southbound IH 45 frontage road, then take a U-turn at Botham Jean Blvd. to access northbound IH 45.

Westbound traffic will take a left on Colonial Ave. and continue along the southbound IH 45 frontage road, then take a U-turn at Botham Jean Blvd. to access northbound IH 45.



Visit [smwrightproject.com/contact-us](https://smwrightproject.com/contact-us) to sign up to receive email updates or call 214.390.7130.



# S. M. WRIGHT PHASE II PROJECT

## Traffic Detours

### Eastbound and Westbound Al Lipscomb Way

Eastbound and Westbound Al Lipscomb Way between S Harwood St. and S Cesar Chavez Blvd. to South Good Latimer Expy. will be closed December 2 to December 16 from 7:00 a.m. to 5:00 p.m. for construction work.

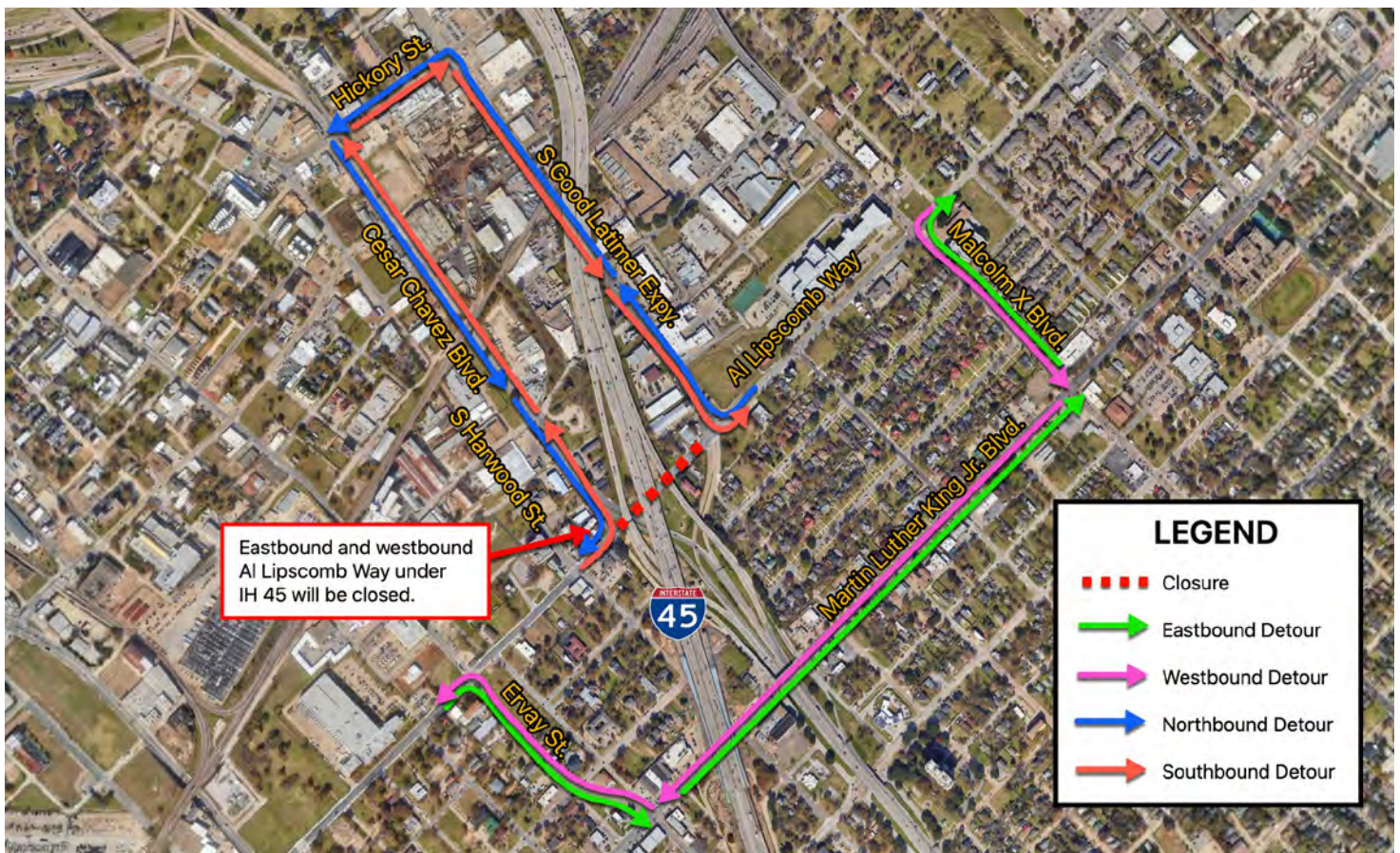
#### Detours

Eastbound traffic will take a right onto Ervay St., then take a left on Martin Luther King Jr. Blvd., then take a left on Malcolm X Blvd., then take a right onto Al Lipscomb Way.

Westbound traffic will take a left onto Malcolm X Blvd., then take a left on Martin Luther King Jr. Blvd., then take a right on Ervay St. and a left onto Al Lipscomb Way.

Northbound traffic will take a right onto S Good Latimer Expy., then take a left on Hickory St., then take a left on Cesar Chavez Blvd. and a right onto Al Lipscomb Way.

Southbound traffic will take a left onto Cesar Chavez Blvd., then take a right onto Hickory St., then a right on S Good Latimer Expy. and a left onto Al Lipscomb Way.



Visit [smwrightproject.com/contact-us](https://smwrightproject.com/contact-us) to sign up to receive email updates or call 214.390.7130.



# S. M. WRIGHT PHASE II PROJECT

## Traffic Detours

### Southbound Cesar Chavez Blvd.

Southbound Cesar Chavez Blvd. between Clarence St. and Al Lipscomb Way will be closed November 28 to December 16 from 7:00 a.m. to 5:00 p.m. for construction work.

#### Detour

Southbound traffic will take a right onto Al Lipscomb Way, then take a left on Ervay St., then take a left on Martin Luther King Jr. Blvd. to access southbound S.M Wright Frwy.



Visit [smwrightproject.com/contact-us](https://smwrightproject.com/contact-us) to sign up to receive email updates or call 214.390.7130.