

# Proposed SM Wright Freeway Redevelopment

Texas Department of Transportation



**Dallas District**

Halff Associates  
Baker Consulting Associates

*April 28, 2009*



## Introduction & Welcome

Alva Baker  
Baker Consulting Associates



- Project Overview
- Concept Development
- Issues to Resolve
  - Roadway Alignment
  - Access/Connections to S.M. Wright
  - Aesthetic Treatments



## Agenda



### Adjacent Neighborhood Associations

South Boulevard/Park Row Historic District	Queen City Neighborhood Association
Wendelkin/Driscoll Neighborhood Association	Forest Heights Neighborhood Association
Ideal Neighborhood Association	

### Nonprofit Organizations

SouthFair Community Development Corporation	Forest Heights Neighborhood Development Corp.
Clean South Dallas	Dallas Black Chamber of Commerce
Innercity Community Development Corp.	T. R. Hoover CDC

### Other Key Stakeholders

New Hope Baptist Church	Greater New Zion Baptist Church
Peoples Missionary Baptist Church	Grace & Mercy Missionary Baptist Church
South Dallas Baptist Church	St. Philip's School and Community Center
South Dallas Nursing Home	Major commercial property owners

### Public Agencies

NTTA	DHA Park Manor
DART	DHA Turner Courts
City of Dallas (PW & T, PARD, DPD)	DHA Rhoades Terrace
TxDOT	MLK, Jr. Elementary School (DISD)
NCTCOG	H.S. Thompson Elementary School (DISD)

## Invited Community Participants



- Dallas Council **Trinity River Committee Briefing** February 5, 2008
- SM Wright **1<sup>st</sup> Stakeholder** Work Group Meeting Mar. 31, 2008
- SM Wright **2<sup>nd</sup> Stakeholder** Work Group Meeting Sept. 9, 2008
- City of **Dallas Public Meeting** hosted by Councilmember Davis Oct. 14, 2008
- SM Wright **3<sup>rd</sup> Stakeholder** Work Group Meeting Dec 9, 2008
- SM Wright **4<sup>th</sup> Stakeholder** Work Group Meeting Jan. 13, 2009
- Dallas Council **Trinity River Committee Briefing** April 21, 2009
- SM Wright **TxDOT Public Meeting** April 28, 2009  
*Topic: SM Wright Preferred Design*
- Trinity Pkwy **NTTA Public Hearing** May 5, 2009  
*Topic: Trinity SDEIS Results & Public Comment*
- SM Wright **TxDOT Public Meeting** Spring 2010  
*Topic: SM Wright Final Design & Environmental*

## Community Involvement

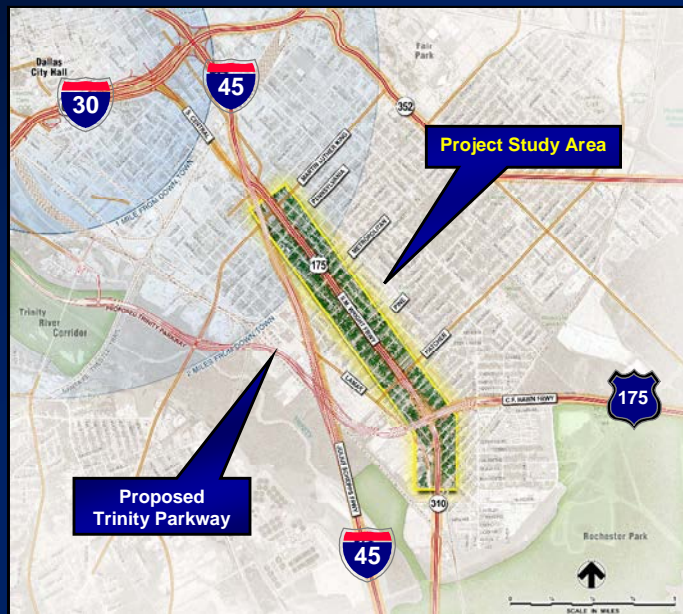


## Project Overview

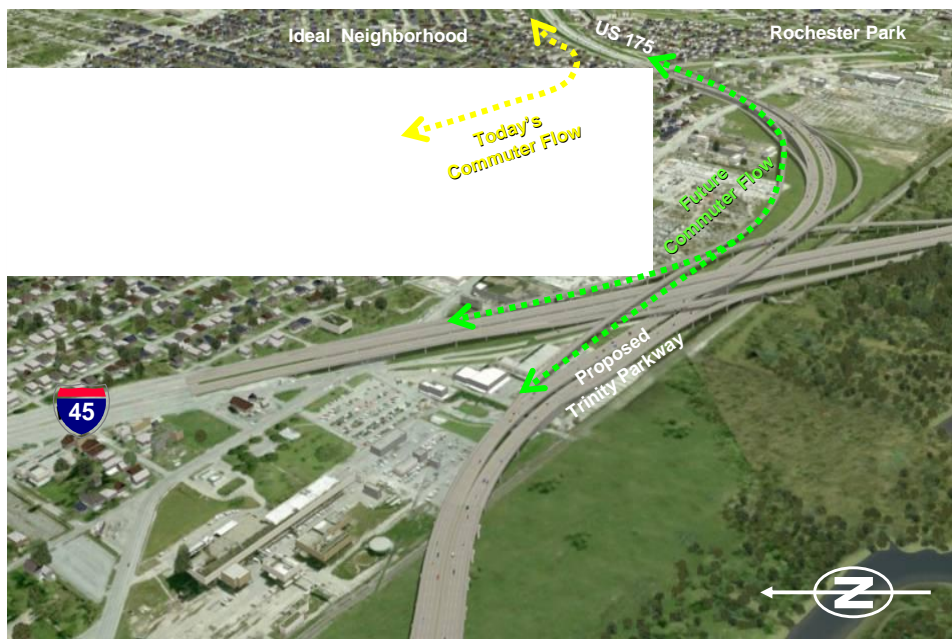
Timothy Nesbitt, P.E.  
Texas Department of Transportation



To develop concepts for the redesign of SM Wright Freeway with a focus on transportation mobility and efficiency, and improving community cohesion and safety.




## SM Wright Project Scope




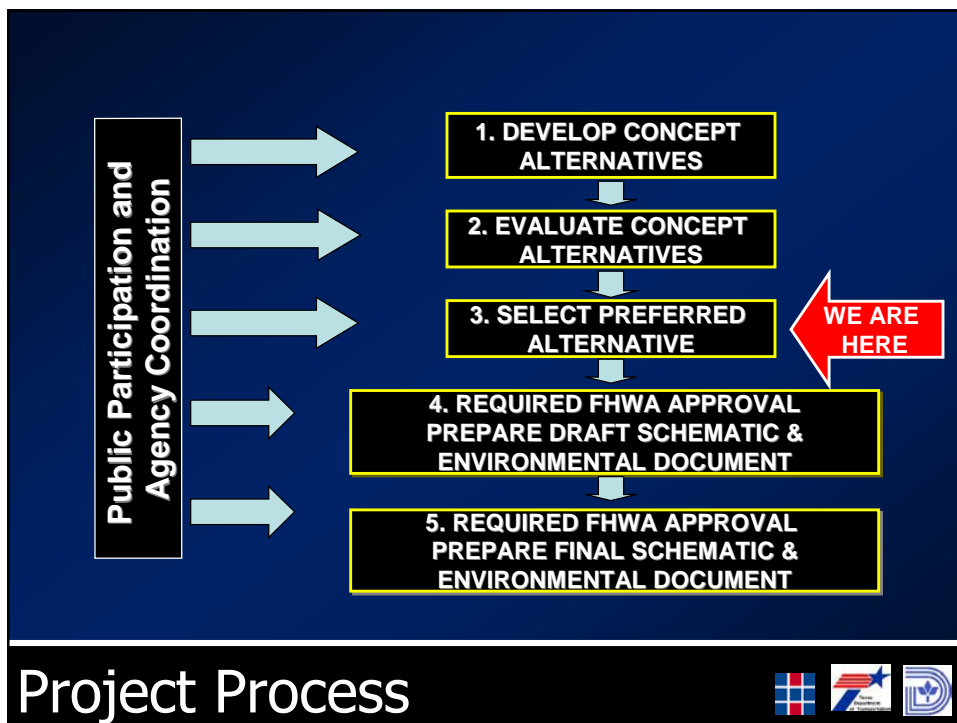
## Ultimate / Proposed Scenario





- Current 6-Lane freeway & frontage roads serve over 100,000 vehicles per day (vpd).
- Diversion to Trinity Parkway and I-45 reduces SM Wright traffic to under 40,000 vpd.
- Traffic reduction no longer requires freeway or bridges.
- Remaining local & through traffic volume requires only 6-lane signalized arterial.
- No added (new) right-of-way is anticipated to be required.
- Design of SM Wright interchange at SH 310 is part of Trinity Parkway construction.

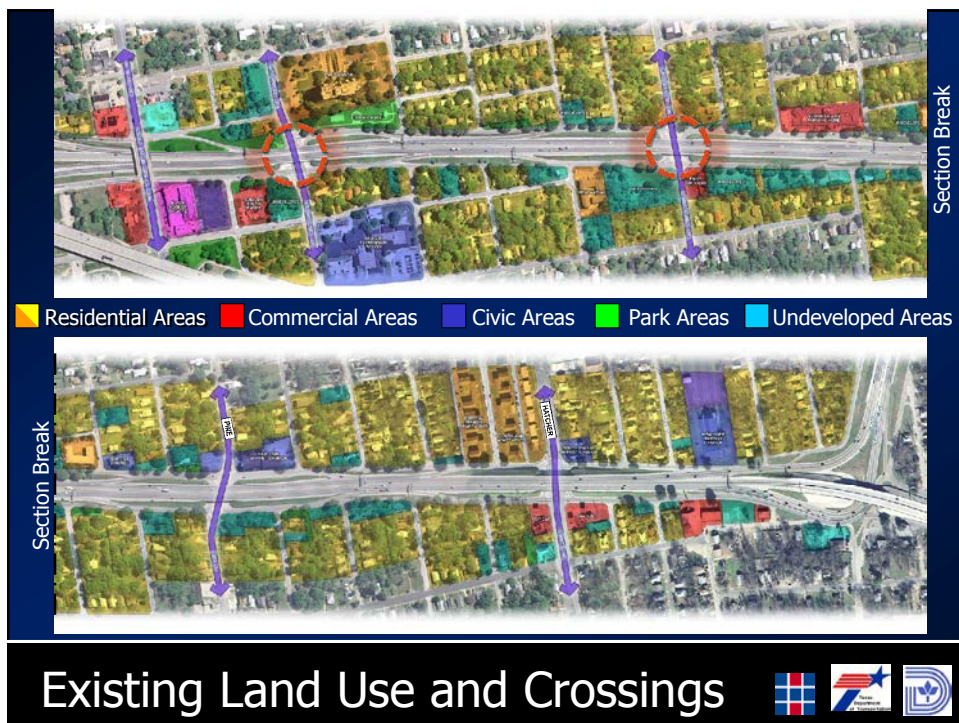
## Project Fundamentals



# Concept Development

Lenny Hughes, R.L.A.  
Dir. of Landscape Architecture



- Determine Preferred Roadway Alignment
- Determine Preferred Connection Options
- Concepts for Use of Residual Land
- Ideas for Aesthetics
  - Landscape
  - Hardscape
  - Gateways



## Project Goals



### CONCEPTS DEFINED BY:

- Roadway Alignment
  - Split Alignment
  - Single Alignment – one side
  - Single Alignment – meandering
- Connections & Access
  - Through Streets
  - Cul-de-Sacs
  - Tee Intersections
- Residual Land Use
  - Recreation/Park or Green Space
  - Parking
  - Redevelopment



## Concept Development





## Turtle Creek Boulevard

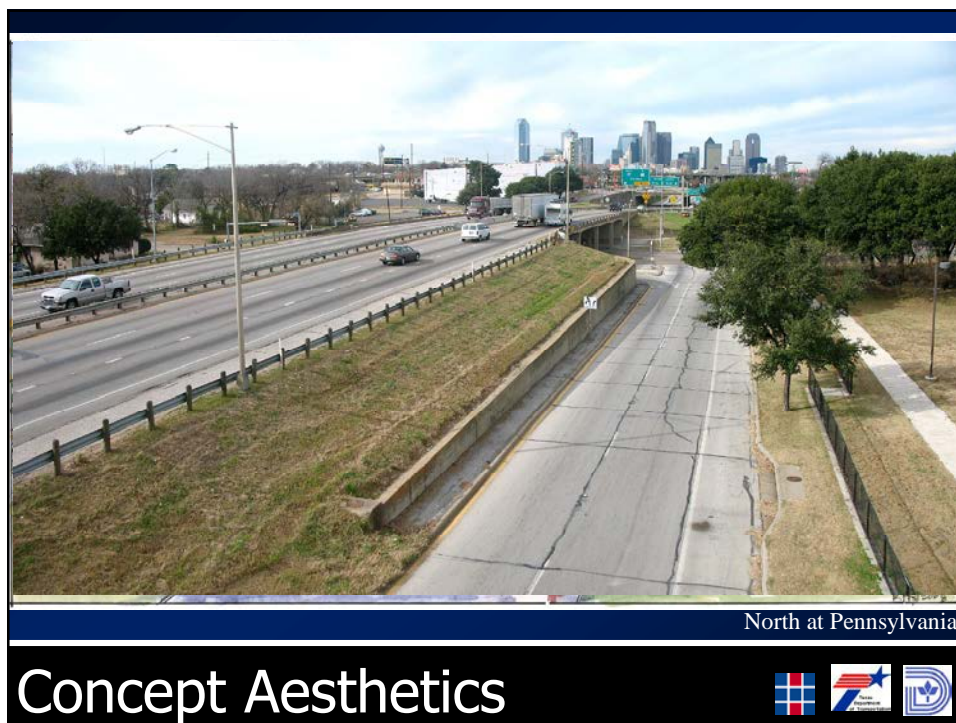
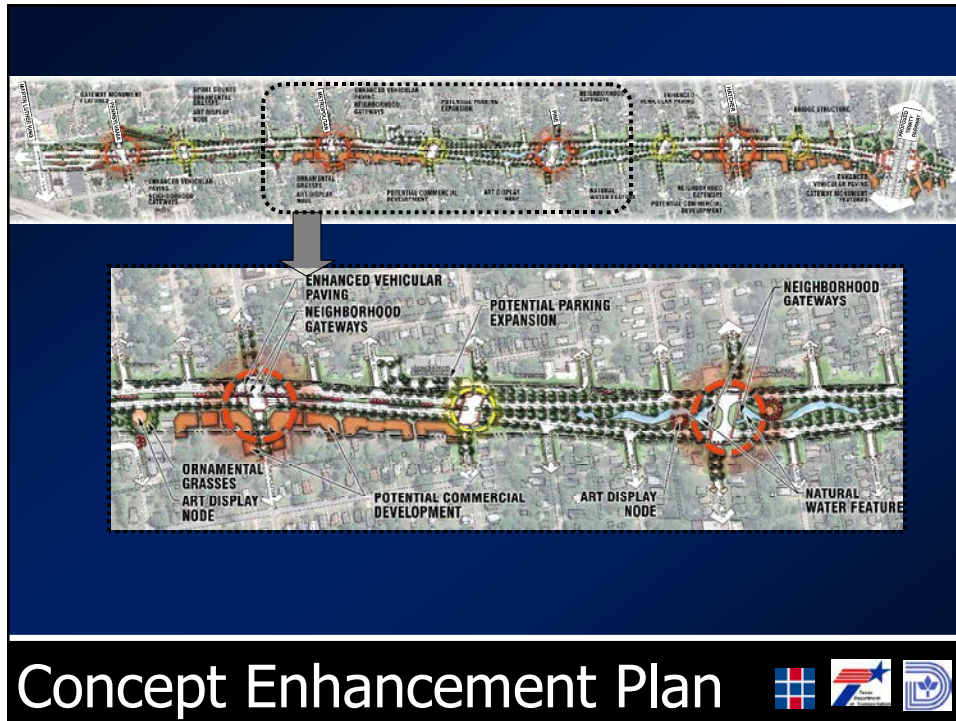
## Preferred Concept

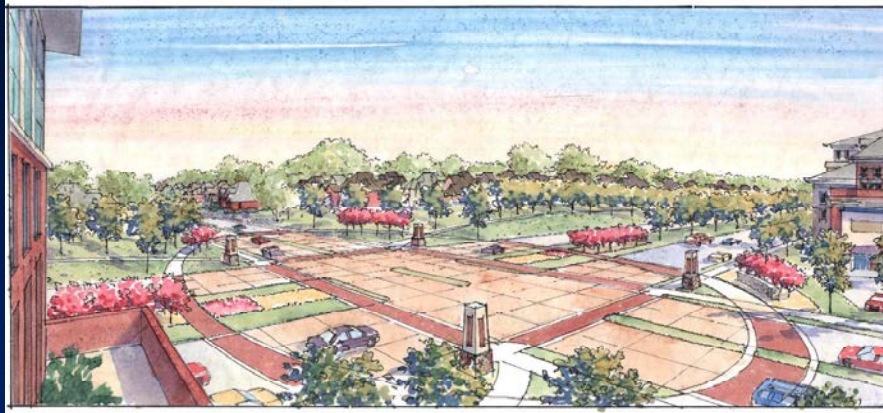


## Concept Access/Residual Land



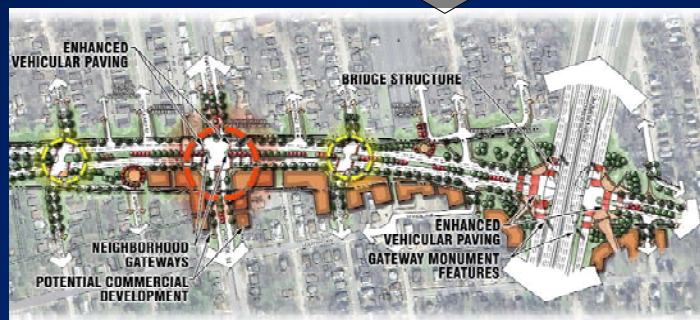






South at Metropolitan

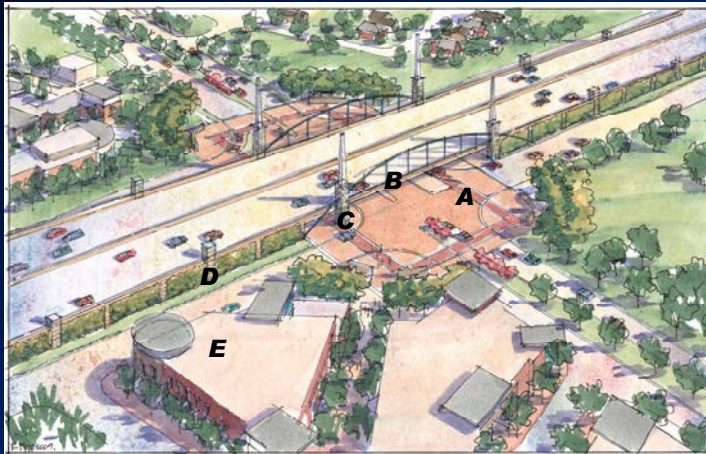
## Concept Aesthetics



## Concept Enhancement Plan



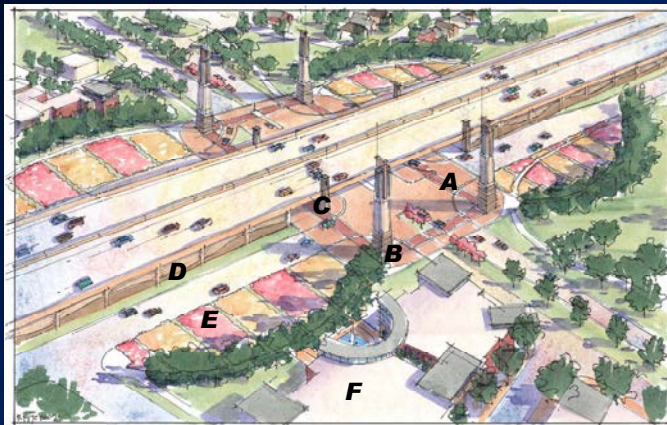




### Design Elements

- |   |                                     |
|---|-------------------------------------|
| A) Enhanced Vehicular Paving                | D) Vegetative Greenwall             |
| B) Gateway Arch                             | E) Potential Commercial Development |
| C) Major/Minor Decorative Gateway Monuments |                                     |

## Trinity Parkway Intersection

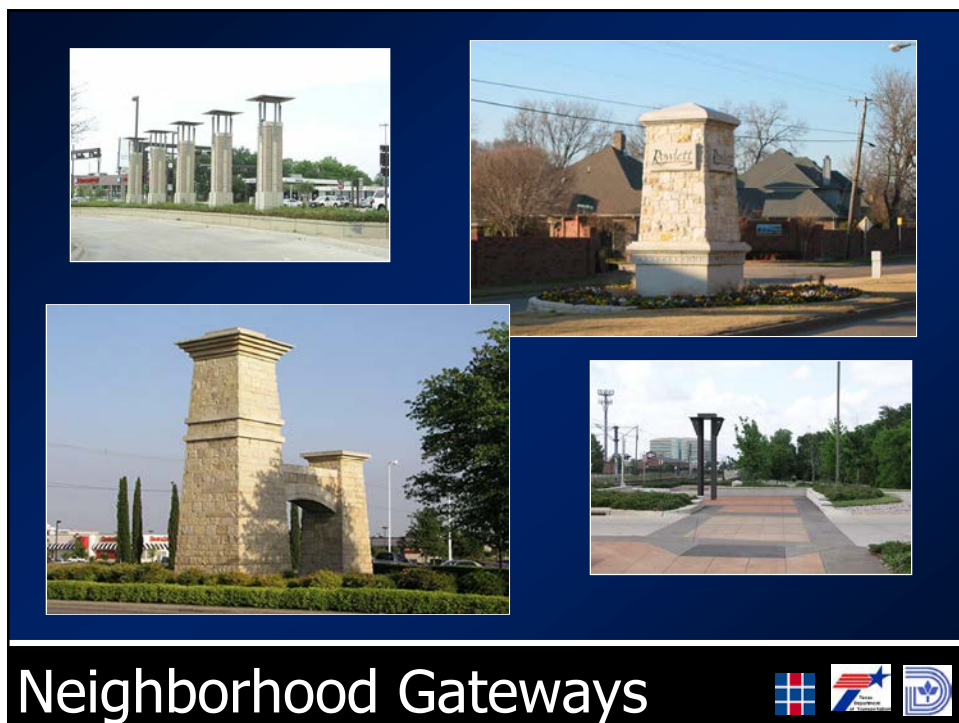


### Design Elements

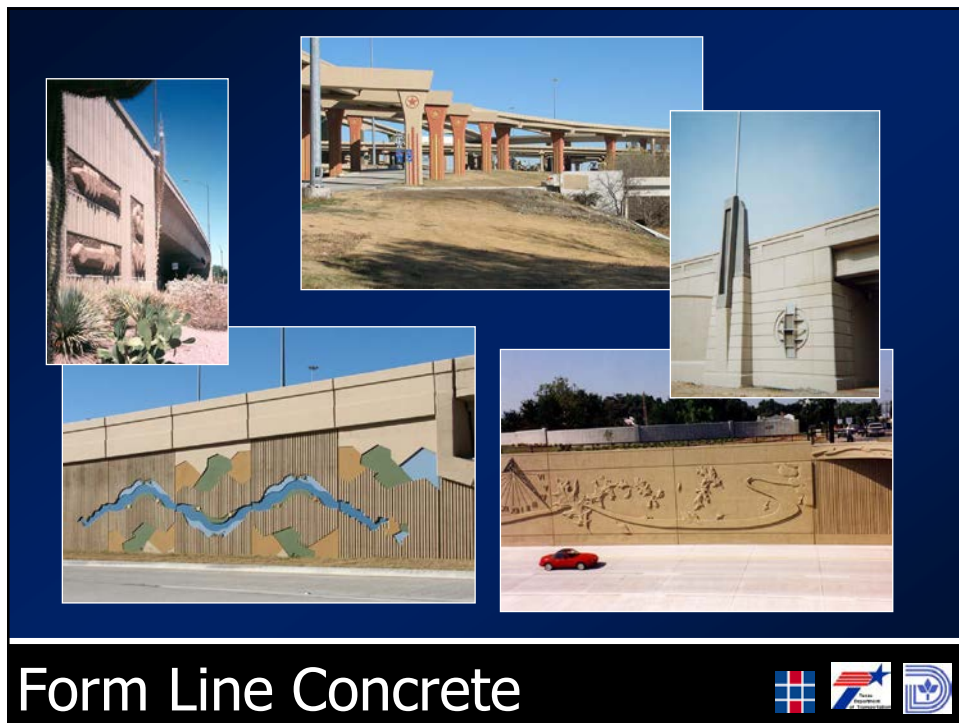
- |                                   |                                     |
|-----------------------------------|-------------------------------------|
| A) Enhanced Vehicular Paving      | D) Form Line Concrete               |
| B) Iconic Gateway Entry Monuments | E) Ornamental Grass Plantings       |
| C) Decorative Gateway Monuments   | F) Potential Commercial Development |

## Trinity Parkway Intersection











- Trinity Parkway SDEIS Hearing- May 5, 2009
- S.M. Wright Roadway Schematic & Environmental Review & Approval – 12 month process
- S.M. Wright Public Meeting – early 2010
- F.H.W.A. Approval – mid 2010
- S.M. Wright Construction – 2014-2016 (Dependent on Trinity Parkway Construction First)
- Adjacent Corridor Redevelopment (City of Dallas) - Ongoing

## Next Steps

Tim Nesbitt, P.E.  
TxDOT Project Manager

Texas Department of  
Transportation  
P.O. Box 133067  
Dallas, Texas 75313-3067  
Phone: 214-320-6245  
Fax: 214-320-4470

Alva Baker  
Consultant Public  
Involvement Specialist

Baker Consulting  
Associates, Inc.  
2401 South Blvd.  
Dallas, Texas 75215  
Phone: 214-428-6432  
Email: bcaabaker@aol.com

For More Information...

