

## SM Wright Phasing Overview



### Phase I

- Adds direct connecting ramps between US 175 - CF Hawn Freeway & I-45
- Let September 2014
- \$94.4 Million
- ROW
  - 27 Parcels Title Obtained
  - 4 Parcels in Negotiations
  - 19 Parcels Eminent Domain
- Construction Start No Earlier Than June 2015

Phase I: US 175 to I 45 Connection

## SM Wright Phasing Overview



### Phase I (continued)

- Provides appropriate lane balance on I-45 to facilitate new direct connecting CF Hawn ramps
- Construction Start No Earlier Than June 2015



Texas Department of Transportation

3

## SM Wright Phasing Overview



### Phase II

- Convert SM Wright into a low speed, signalized, pedestrian-friendly, landscaped arterial
- Construction to begin by 2018 after Phase I construction is completed



Texas Department of Transportation

4



Texas Department of Transportation  
Dallas District

®

## SM Wright Phasing Overview



### Phase IIB: Access Improvements

### Phase IIB

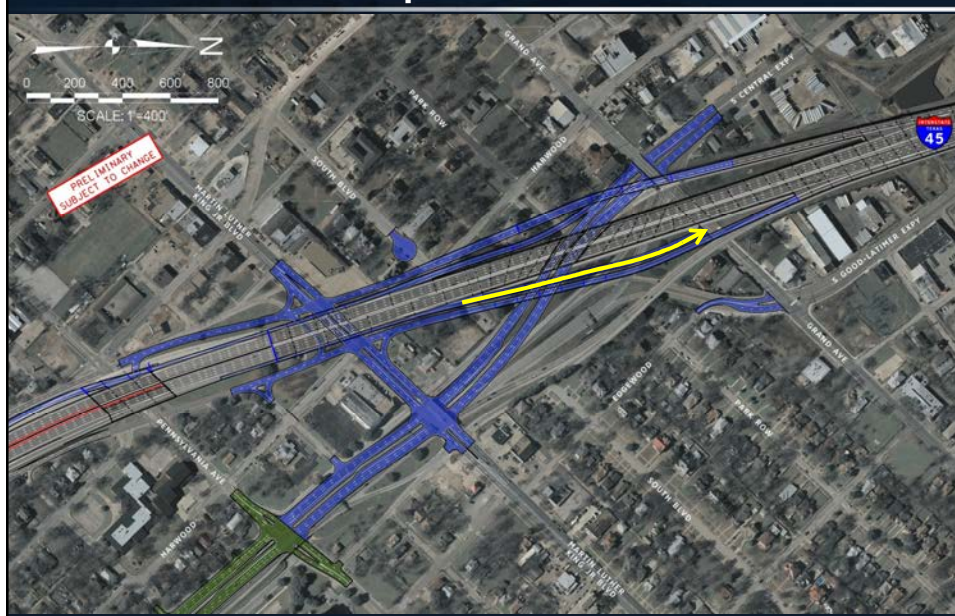
- Reconfigures interchange between I-45, SM Wright, Cesar Chavez, Good Latimer and Grand and improves access to I-45
- To be constructed with Phase II



Texas Department of Transportation

5

## Phase IIB - Proposed NB Exit to Grand



Texas Department of Transportation

6

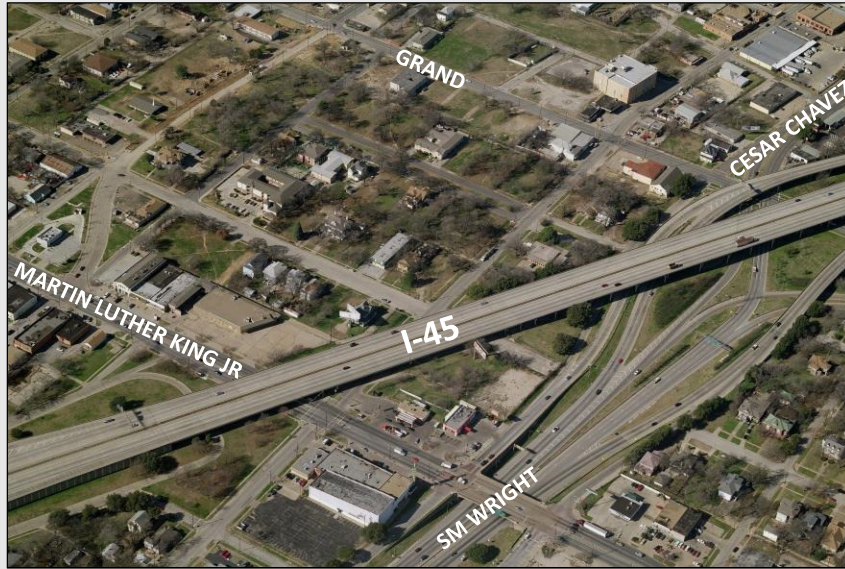


Texas Department of Transportation  
Dallas District

(R)



### Existing View Looking Northwest



### Proposed View – NB Exit to Grand









## Proposed View – SB Entrance from Grand



Texas Department of Transportation

11

## Phase IIB - Reconfigure Existing Interchange



Texas Department of Transportation

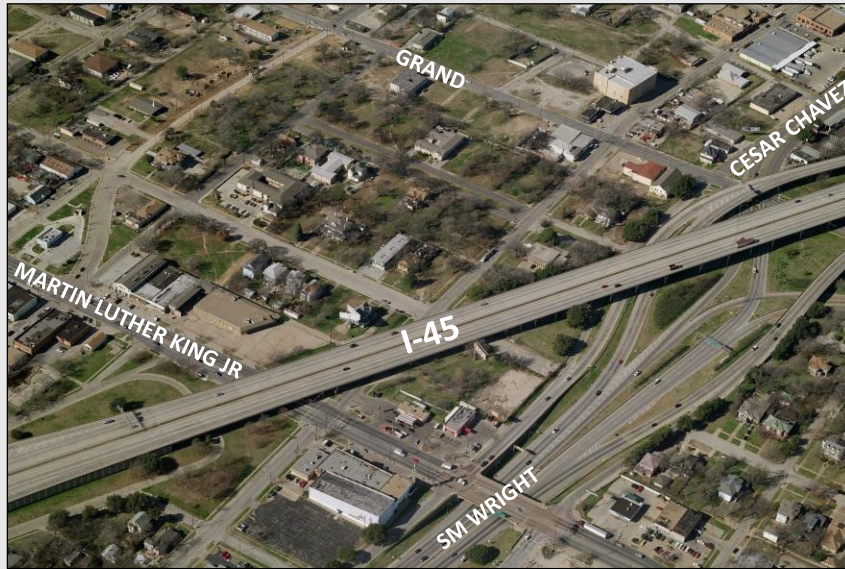
12



Texas Department of Transportation  
Dallas District

®

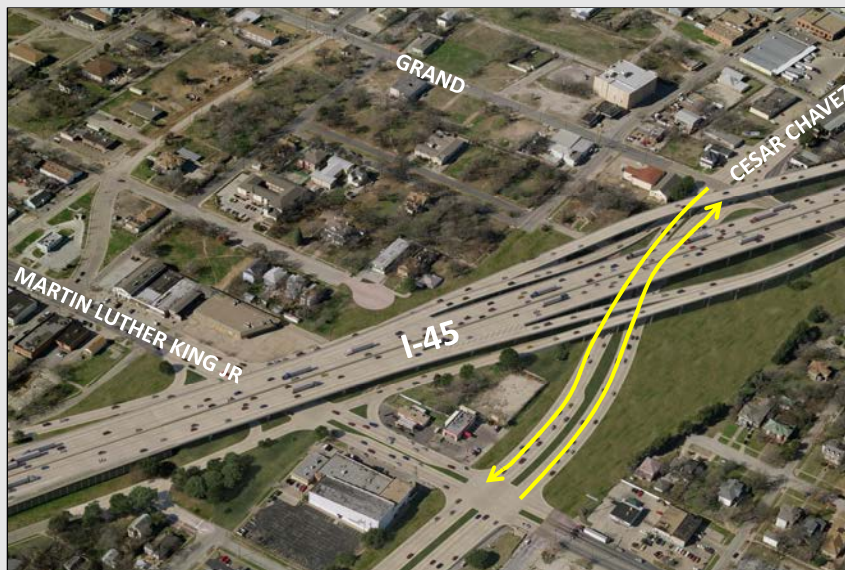
### Existing View Looking Northwest



Texas Department of Transportation

13

### Proposed View – Reconfigure Interchange

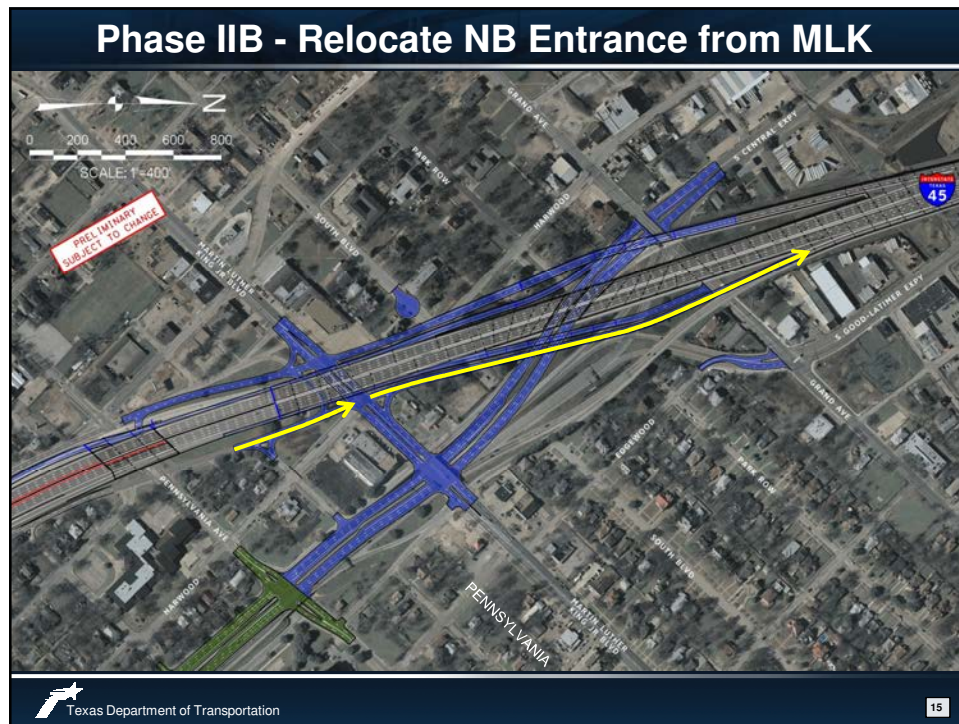


Texas Department of Transportation

14









## Proposed View – NB Entrance from MLK



Texas Department of Transportation

17

## Phase IIB - Relocate SB Exit to MLK



Texas Department of Transportation

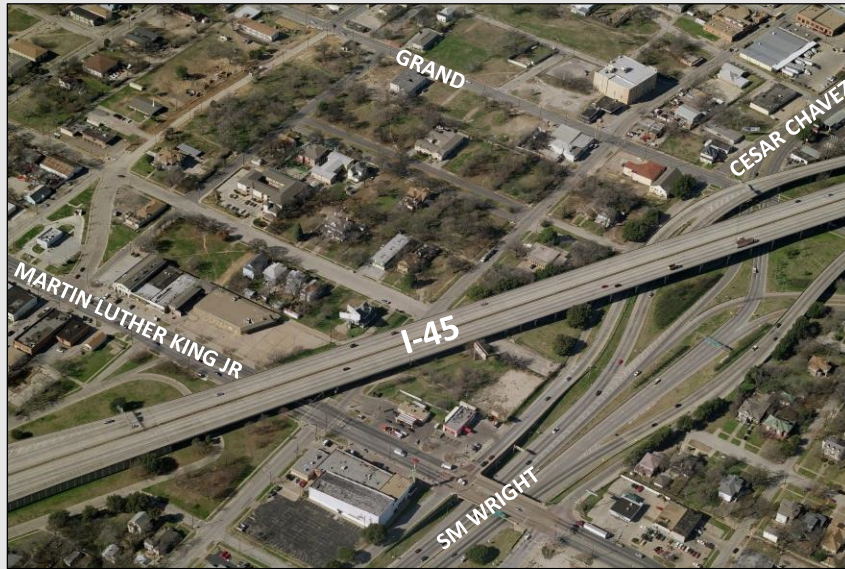
18



Texas Department of Transportation  
Dallas District

®

### Existing View Looking Northwest



Texas Department of Transportation

19

### Proposed View – SB Exit to MLK



Texas Department of Transportation

20



Texas Department of Transportation  
Dallas District

(R)





### Anticipated Project Development Timeline

- Phase IIB Public Meeting :  
February 26, 2015 from 5-7pm  
Park South Family YMCA  
2500 Romine Ave, Dallas, TX 75215
- Phase IIB Public Hearing : 4<sup>th</sup> Quarter 2015
- Phase IIB Environmental Clearance: 1<sup>st</sup> Quarter 2016
- Phase II & IIB Letting: 3<sup>rd</sup> Quarter 2017
- Phase II & IIB Open to Traffic: 3<sup>rd</sup> Quarter 2019

## Contact Information

- TxDOT Project Manager
    - Mr. Stephen Endres, P.E.  
Texas Department of Transportation  
4777 E Highway 80  
Mesquite, Texas 75150  
Phone: (214) 320-4469  
Fax: (214) 320-4470  
Email: [stephen.endres@txdot.gov](mailto:stephen.endres@txdot.gov)
  - Consultant Project Manager
    - Mr. Jeremy McGahan, P.E.  
Halff Associates, Inc.  
1201 North Bowser Road  
Richardson, Texas 75081  
Phone: (214) 346-6371  
Fax: (214) 739-0095  
Email: [jmcgahan@halff.com](mailto:jmcgahan@halff.com)
  - Public Involvement Specialist
    - Ms. Alva Baker  
Baker Consulting Associates  
2822 MLK Jr. Boulevard  
Dallas, Texas 75215  
Phone: (214) 404-4464  
Email: [bcaabaker@aol.com](mailto:bcaabaker@aol.com)
- Additional information  
available at:  
[smwrightproject.org](http://smwrightproject.org)



Texas Department of Transportation

23



Texas Department of Transportation  
Dallas District

®