

Proposed SM Wright Project on IH 45 / US 175 / SH 310 Open House Public Meeting



Dallas District

Halff Associates
Baker Consulting Associates

August 7, 2012



- Why is this project needed?
- What is the process?
- How has the community been involved?
- What is being studied?
- Next Steps



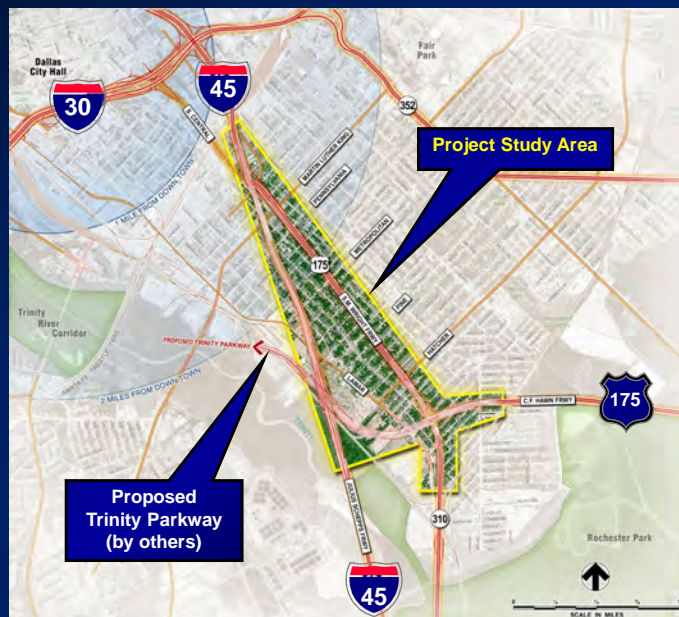
Agenda



Project Need & Overview



To develop concepts for the SM Wright Project with a focus on increased safety through removing the CF Hawn to SM Wright bend, improved mobility and efficiency, while enhancing community connectivity and aesthetics.





SM Wright Project Scope





- Current 6-Lane freeway & frontage roads serve over 82,000 vehicles per day (vpd).
- Diversion to I-45 and Trinity Parkway reduces SM Wright traffic to about 50,000 vpd.
- Traffic reduction no longer needs freeway or bridges on SM Wright.
- Remaining local & through traffic volume requires only 6-lane signalized arterial.
- No added (new) right-of-way is anticipated for SM Wright. ROW is anticipated for US 175 connection to IH 45.


SM Wright Fundamentals

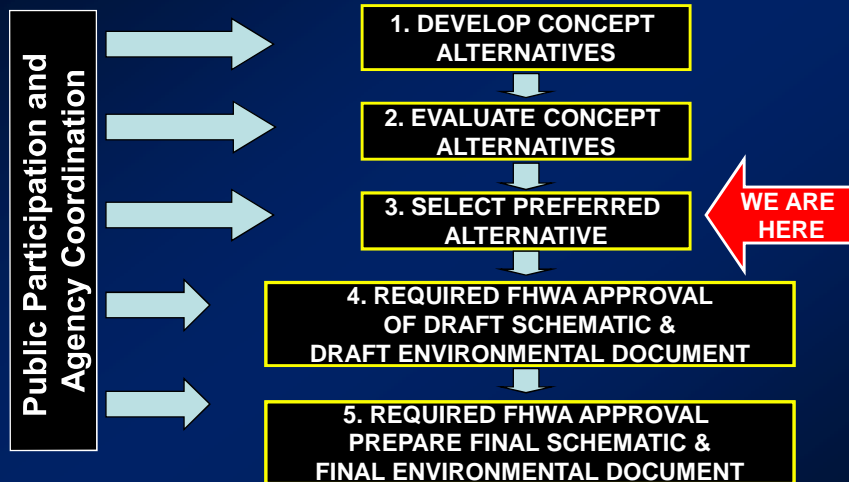
Proposed Project Concept

- Add direct connecting ramps between US 175 CF Hawn Freeway & IH 45
- Improve IH 45 capacity to facilitate new direct connecting CF Hawn ramps
- Provide access between CF Hawn & SM Wright through a grade separated interchange
- Convert SM Wright to a low speed, signalized, pedestrian-friendly, landscaped arterial
- Spacing provided to allow proposed Trinity Parkway connection and extension

This Project's Traffic Flow



Project Process



Project Process



Community Involvement



Adjacent Neighborhood Associations

South Boulevard/Park Row Historic District	Queen City Neighborhood Association
Wendelkin/Driscoll Neighborhood Association	Forest Heights Neighborhood Association
Ideal Neighborhood Association	

Nonprofit Organizations

SouthFair Community Development Corporation	Forest Heights Neighborhood Development Corp.
Clean South Dallas	Dallas Black Chamber of Commerce
Innecity Community Development Corp.	T. R. Hoover CDC

Other Key Stakeholders

New Hope Baptist Church	Greater New Zion Baptist Church
Peoples Missionary Baptist Church	Grace & Mercy Missionary Baptist Church
South Dallas Baptist Church	St. Philip's School and Community Center
South Dallas Nursing Home	Major commercial property owners

Public Agencies

NTTA	Dallas Housing Authority
DART	City of Dallas (PW & T, PARD, DPD)
TxDOT	MLK, Jr. Elementary School (DISD)
NCTCOG	H.S. Thompson Elementary School (DISD)

Invited Community Participants



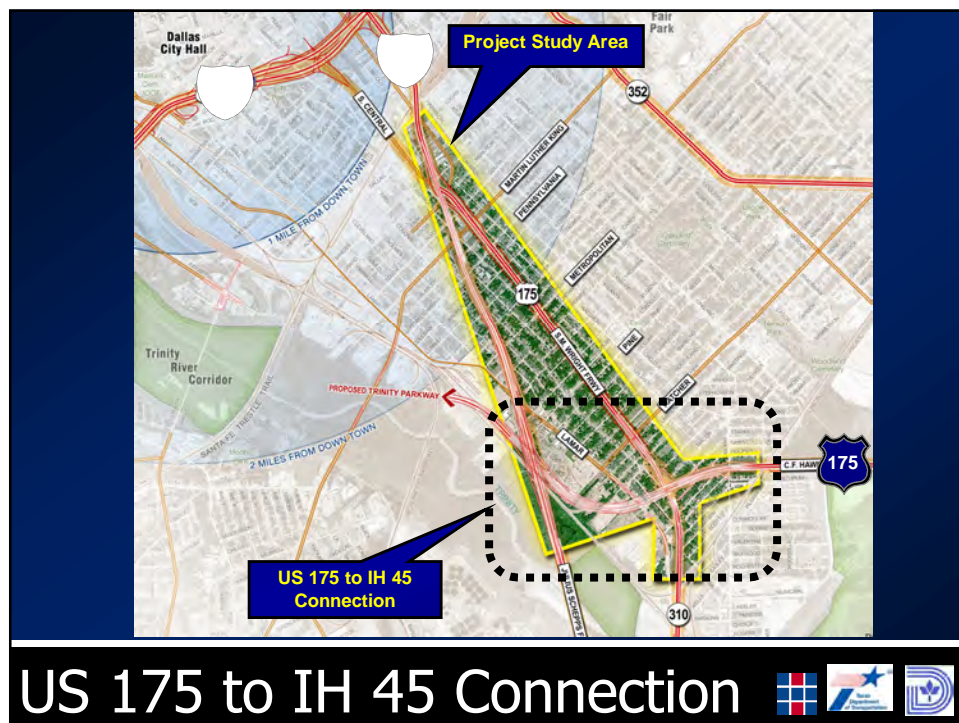
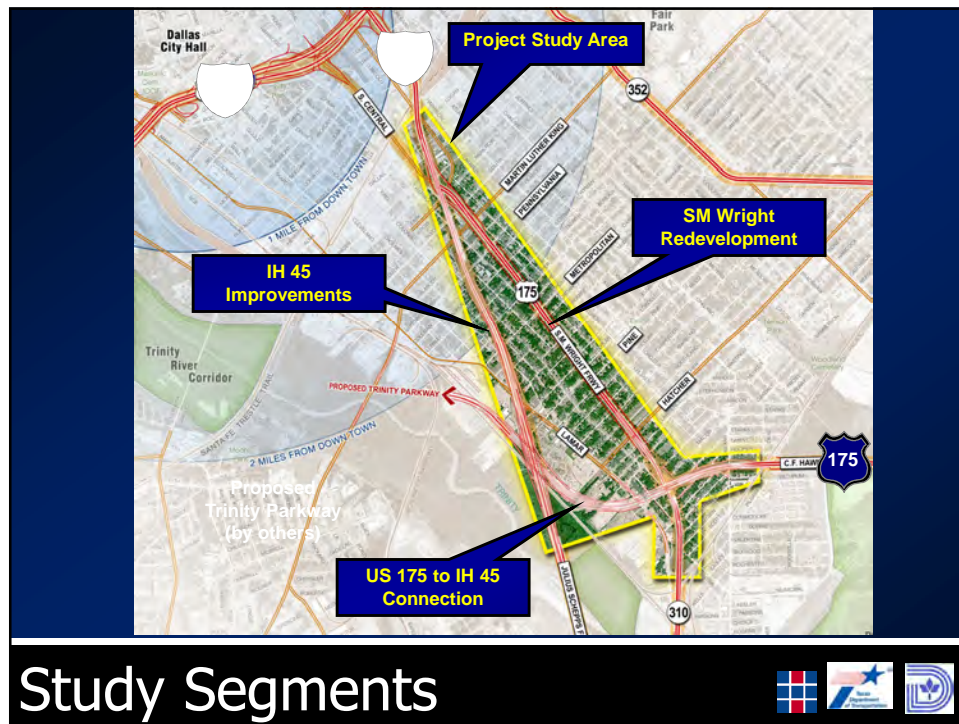
- Dallas Council **Trinity River Committee Briefing** February 5, 2008
- SM Wright Project **1st Stakeholder** Work Group Meeting Mar. 31, 2008
- SM Wright Project **2nd Stakeholder** Work Group Meeting Sept. 9, 2008
- City of **Dallas Public Meeting** hosted by Councilmember Davis Oct. 14, 2008
- SM Wright Project **3rd Stakeholder** Work Group Meeting Dec 9, 2008
- SM Wright Project **4th Stakeholder** Work Group Meeting Jan. 13, 2009
- Dallas Council **Trinity River Committee Briefing** April 21, 2009
- SM Wright **TxDOT Public Meeting** April 28, 2009
- Trinity Pkwy **NTTA Public Hearing** May 5, 2009
- SM Wright Project **Elected Officials Briefing** March 8, 2010
- SM Wright Project **TxDOT Public Meeting** March 30, 2010
- SM Wright Project **Dallas Elected Officials Briefings** May 23, July 13, Sept. 29, and Dec. 12, 2011 and June 25, 2012
- Trinity Pkwy **NTTA Public Hearing** May 8, 2012
- SM Wright Project **5th Stakeholder** Work Group Meeting July 30, 2012
- SM Wright Project **TxDOT Public Meeting** August 7, 2012

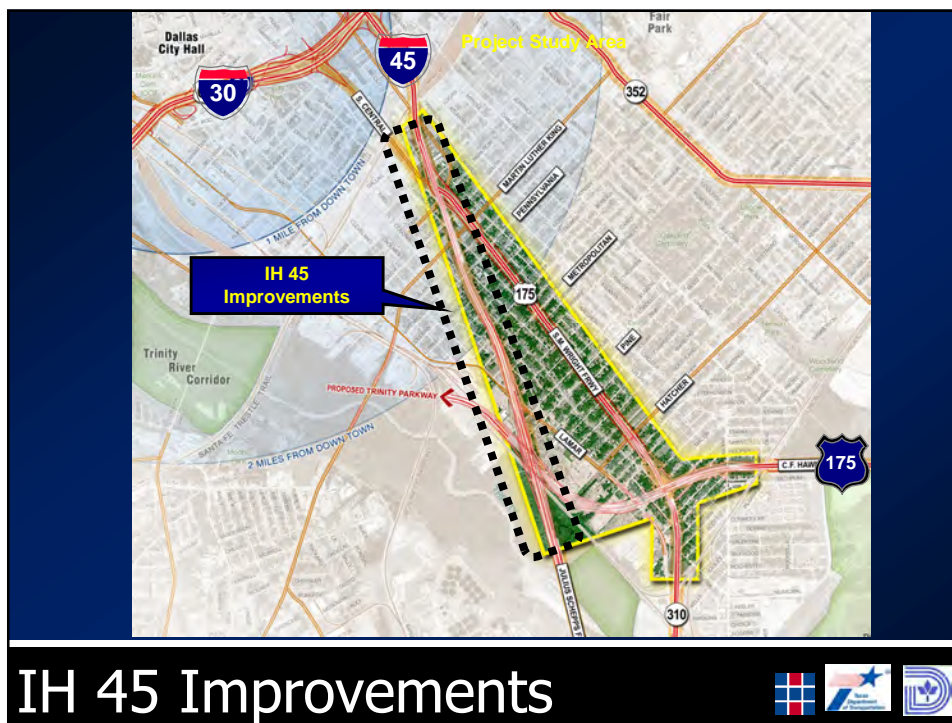
Community Involvement

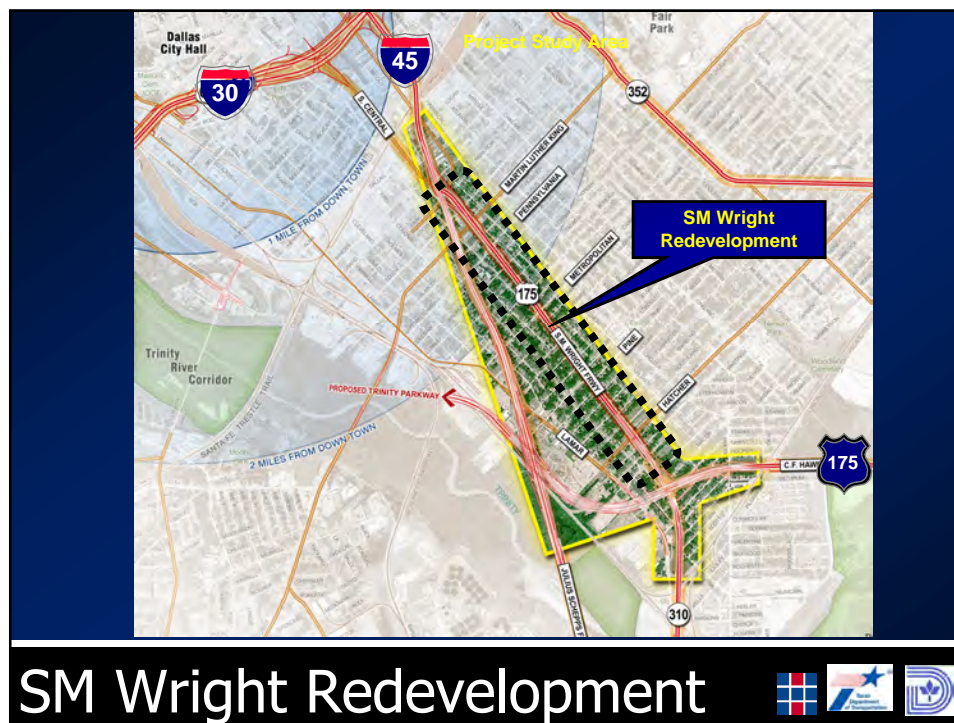
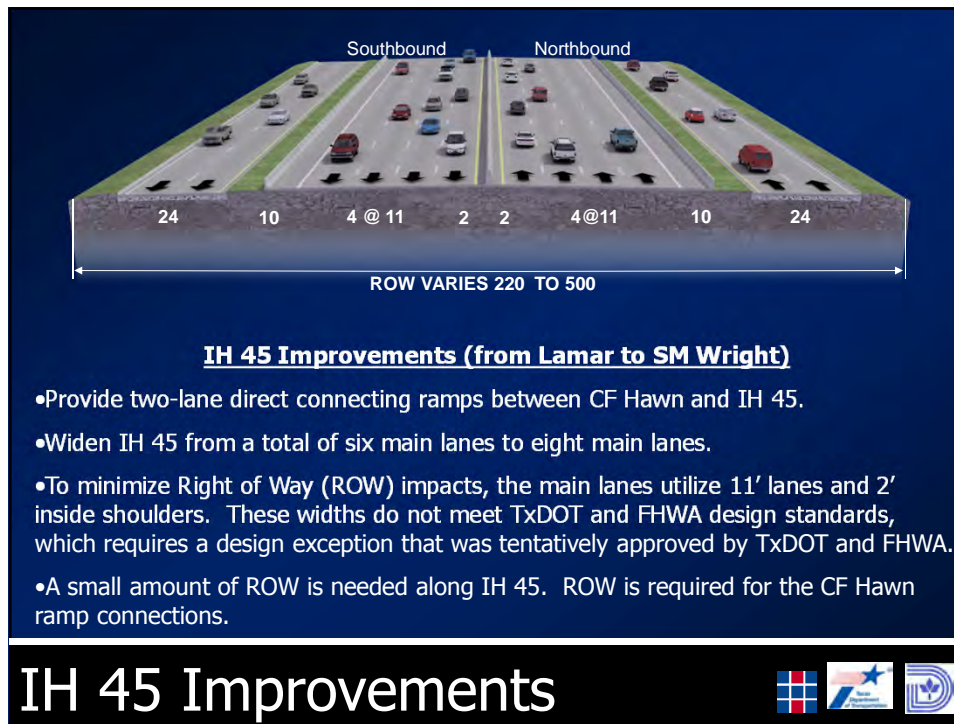




What is Being Studied?










Water Feature




Intersection Enhancement



SM WRIGHT REDEVELOPMENT

SEE GRAPHICS ON DISPLAY

Concept Enhancement Plan

S.M. Wright Project

2009 Preferred Alignment

Key Design Elements from 2009:


- Meandering roadway alignment
- Gateway features
- Water feature
- Hike and bike trails
- Enhanced vehicular paving




PROS

- Enhanced buffers between adjacent neighborhoods and S.M. Wright
- Incorporated additional intersections for pedestrian crossings
- Allows for enlarging existing park space at Kimball Park


CONS

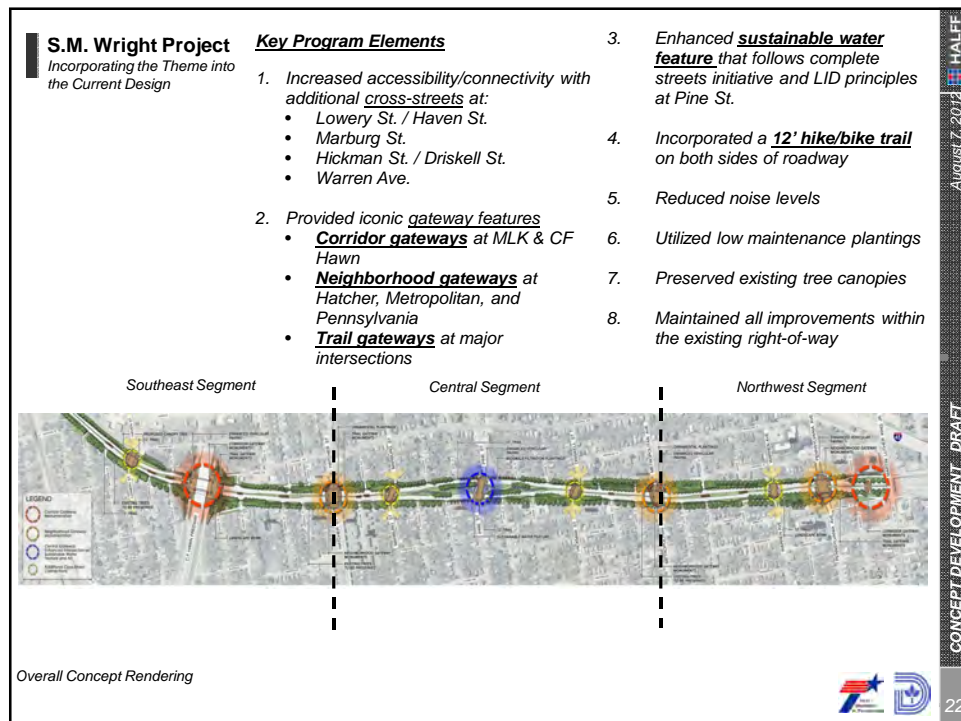
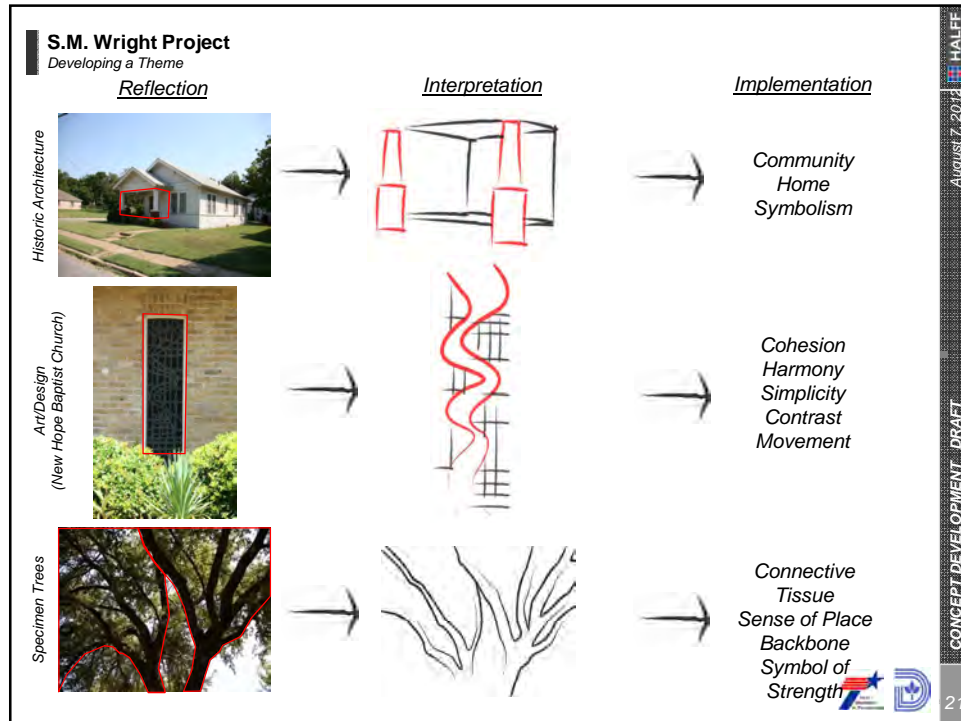
- Potential commercial development encroaches upon historic district
- Extensive enhancements may impact adjacent historic neighborhood context

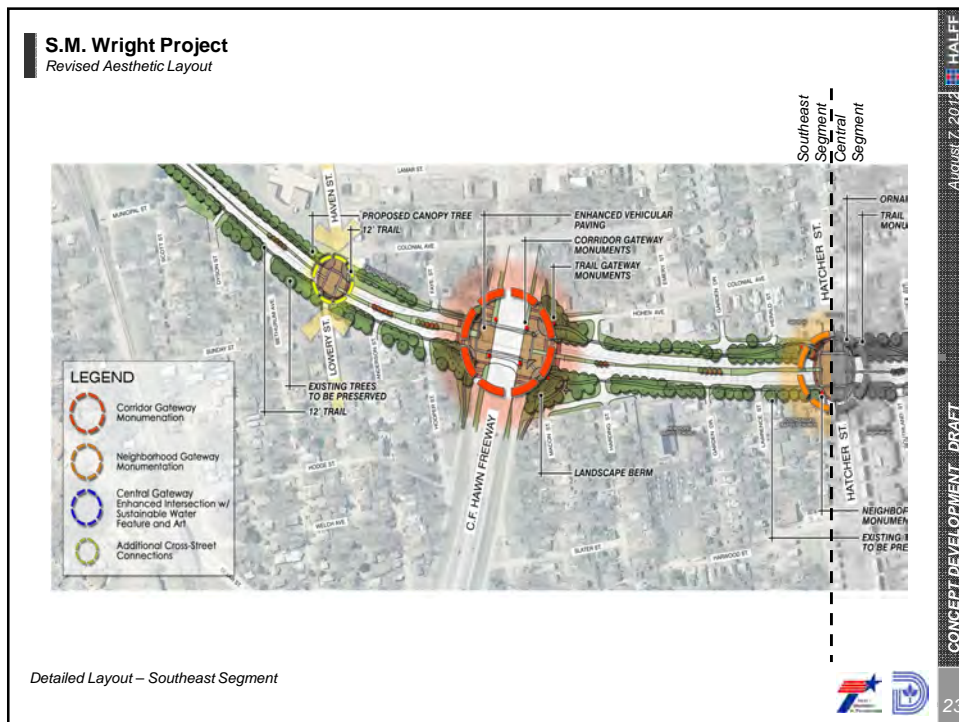


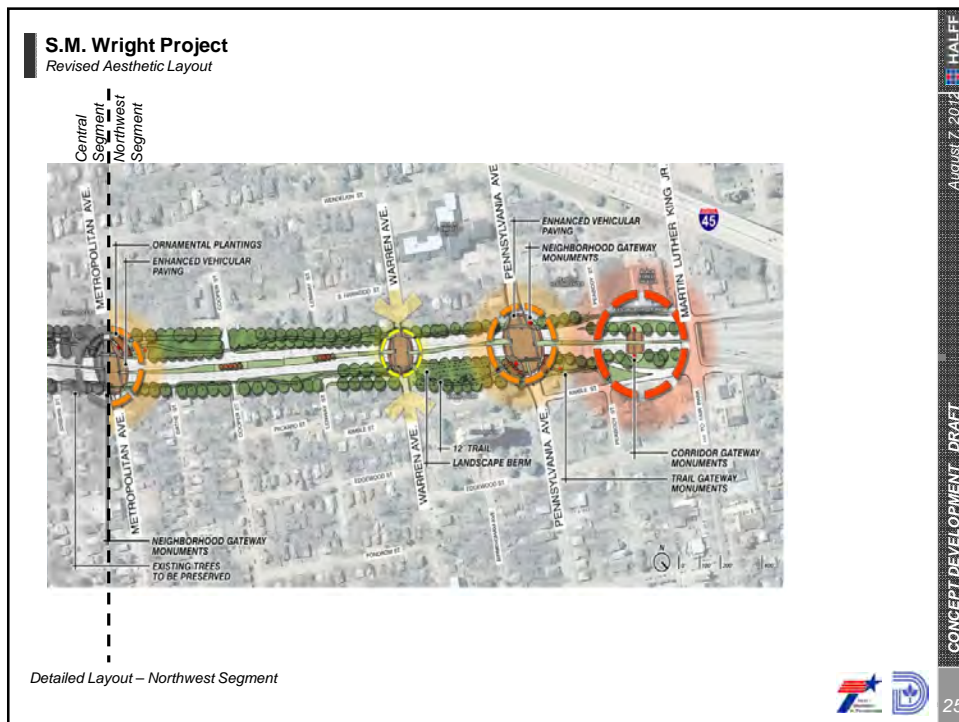




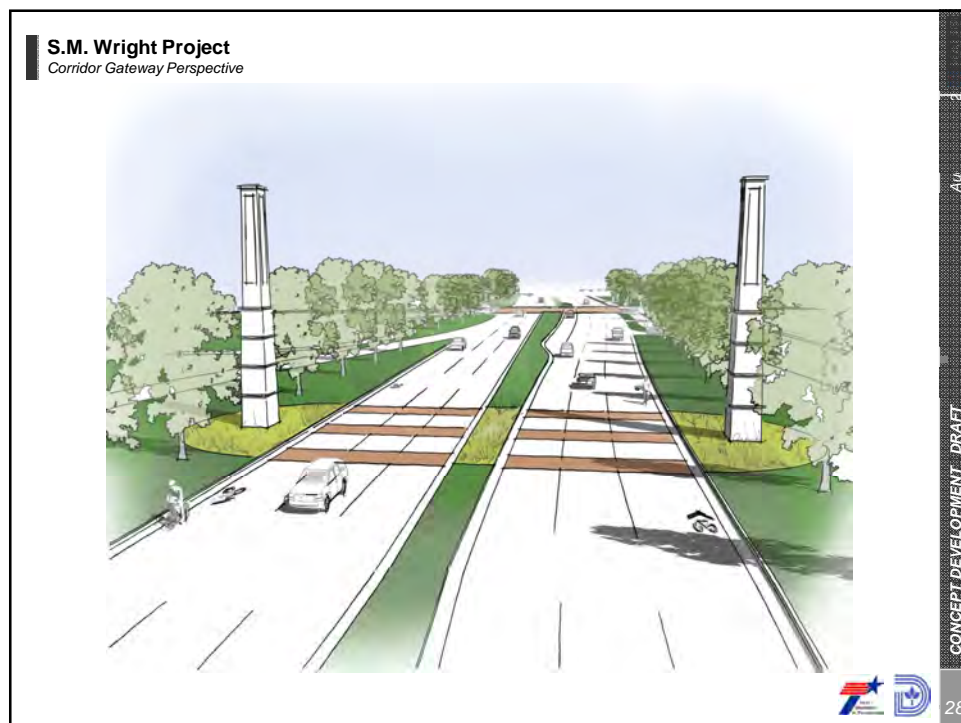
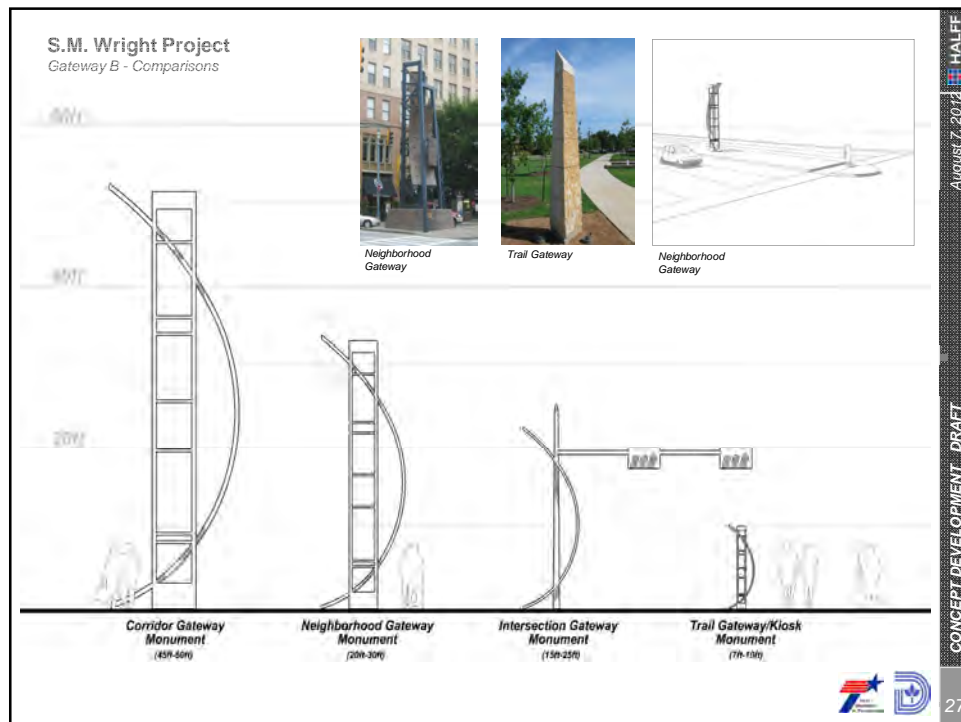
August 7, 2012
 CONCEPT DEVELOPMENT - DRAFT

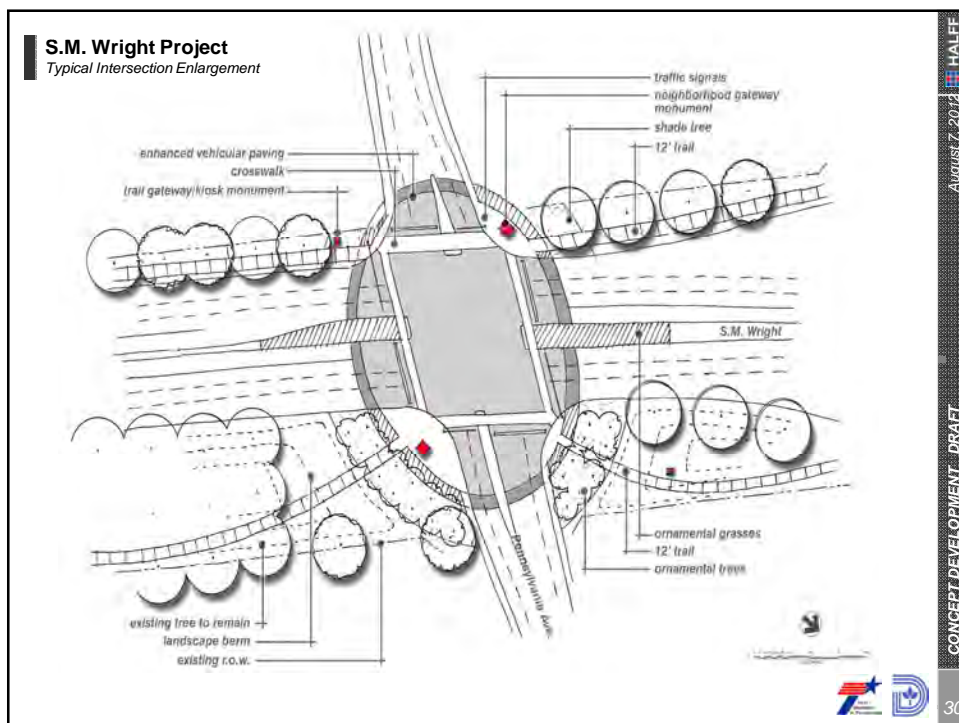
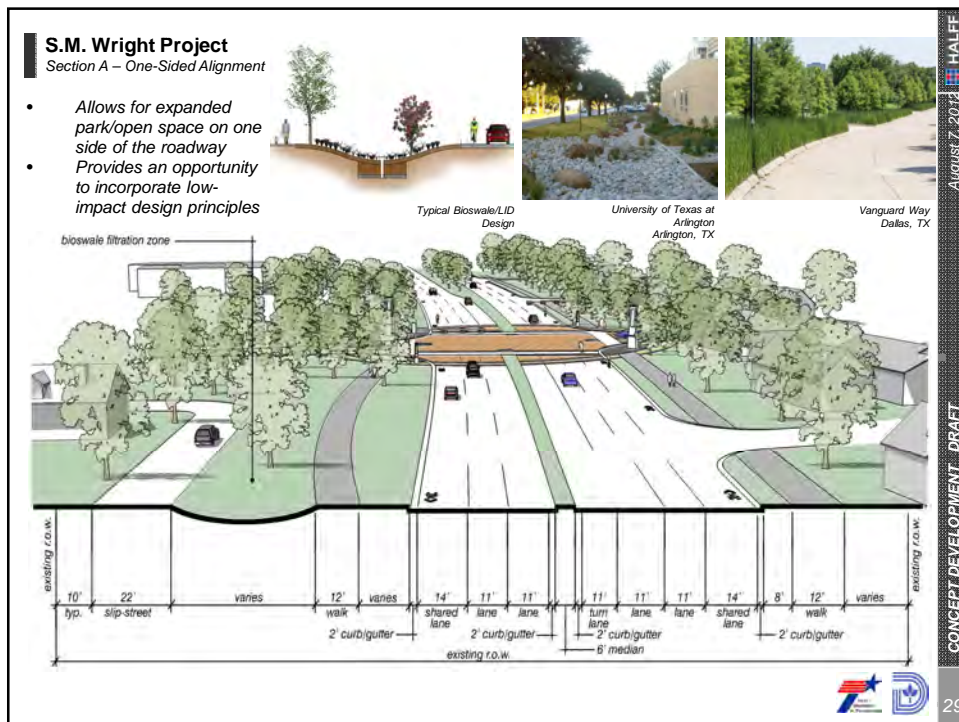

20

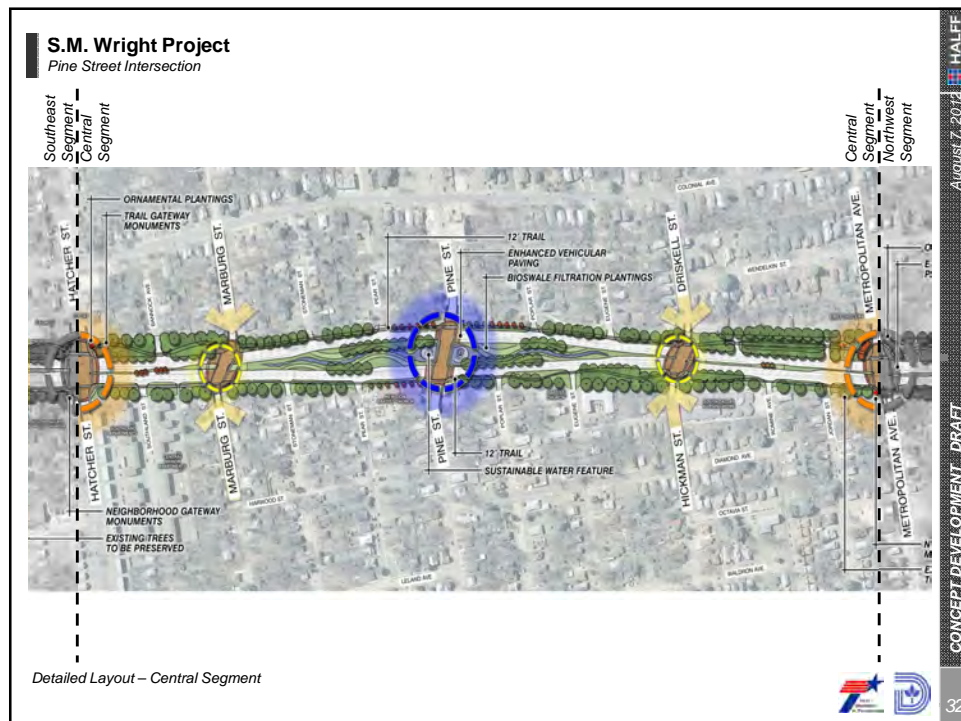
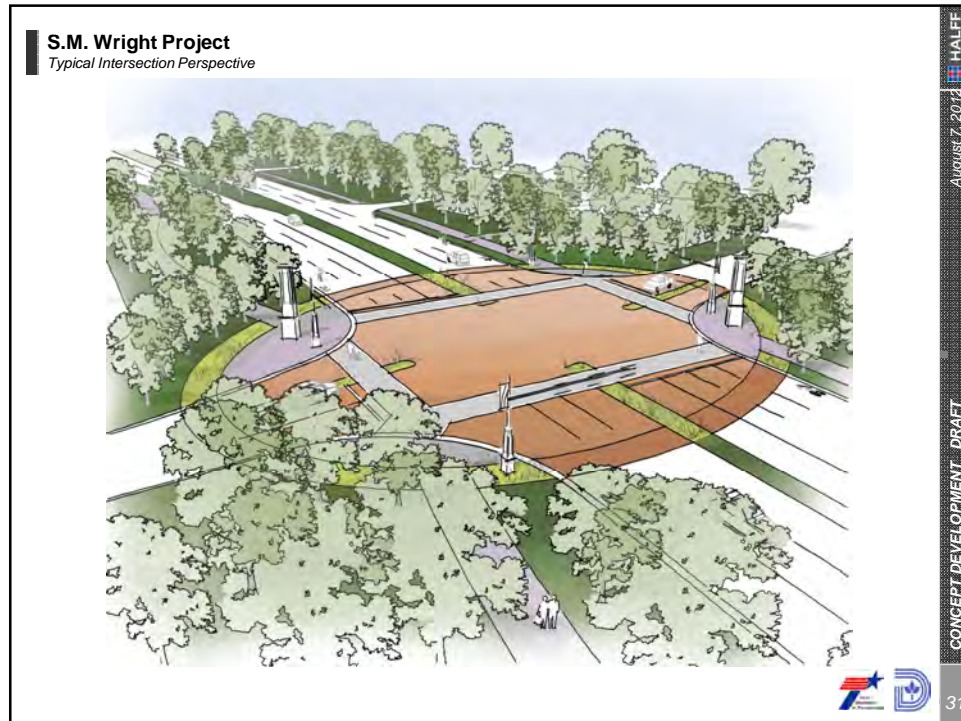


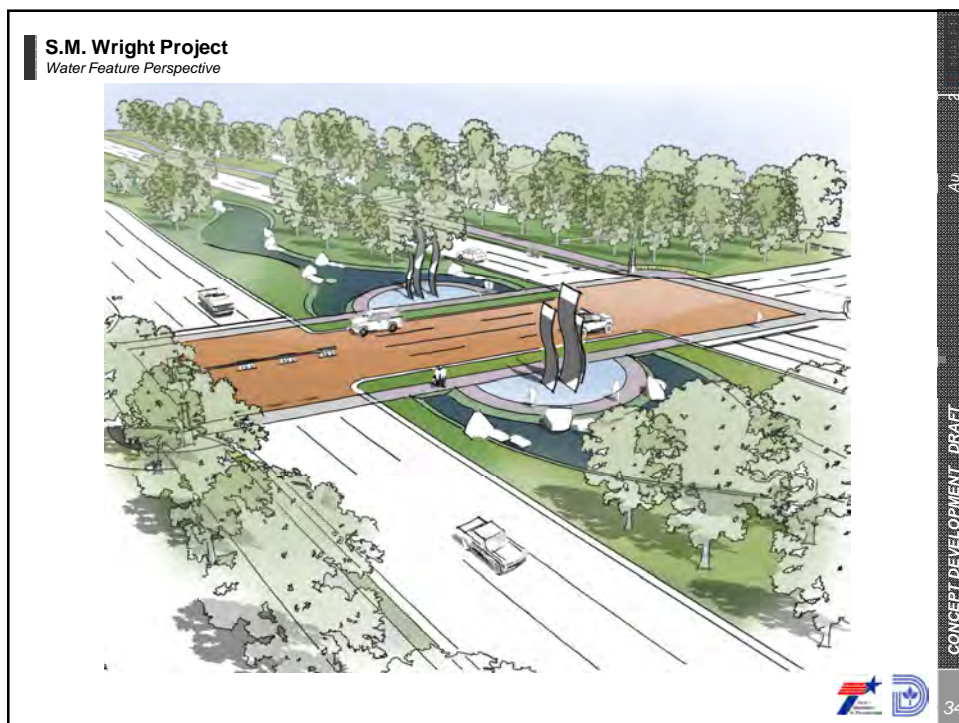
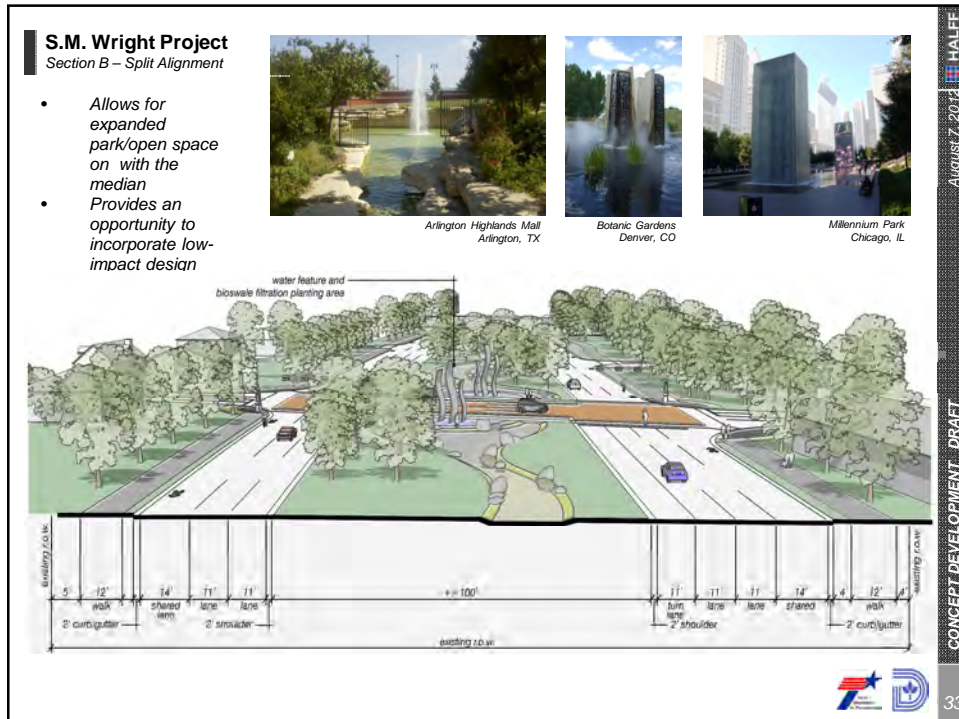


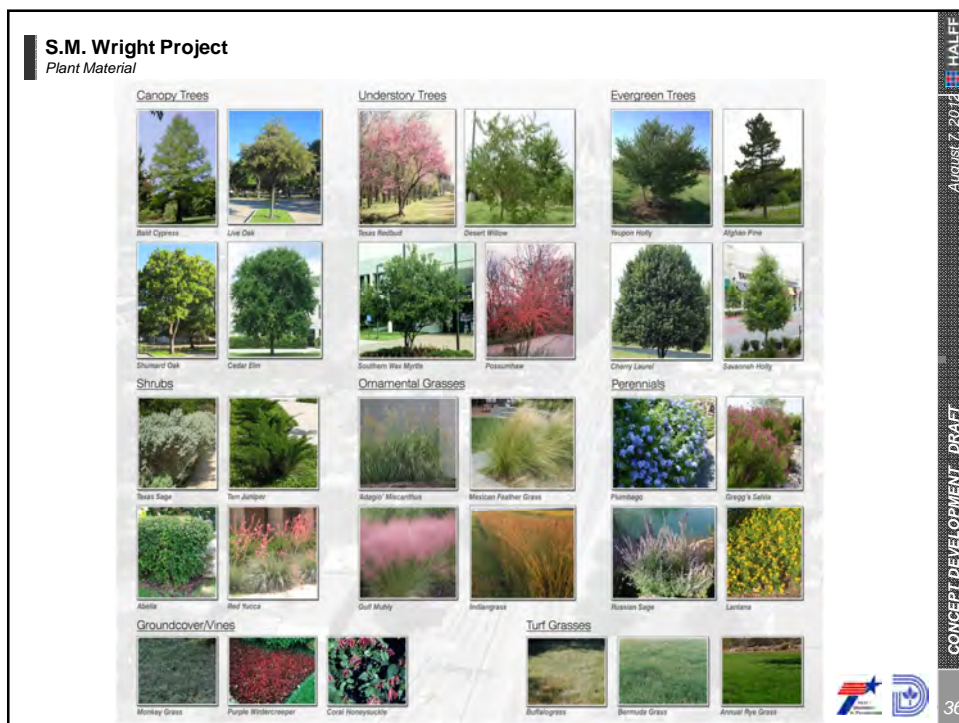
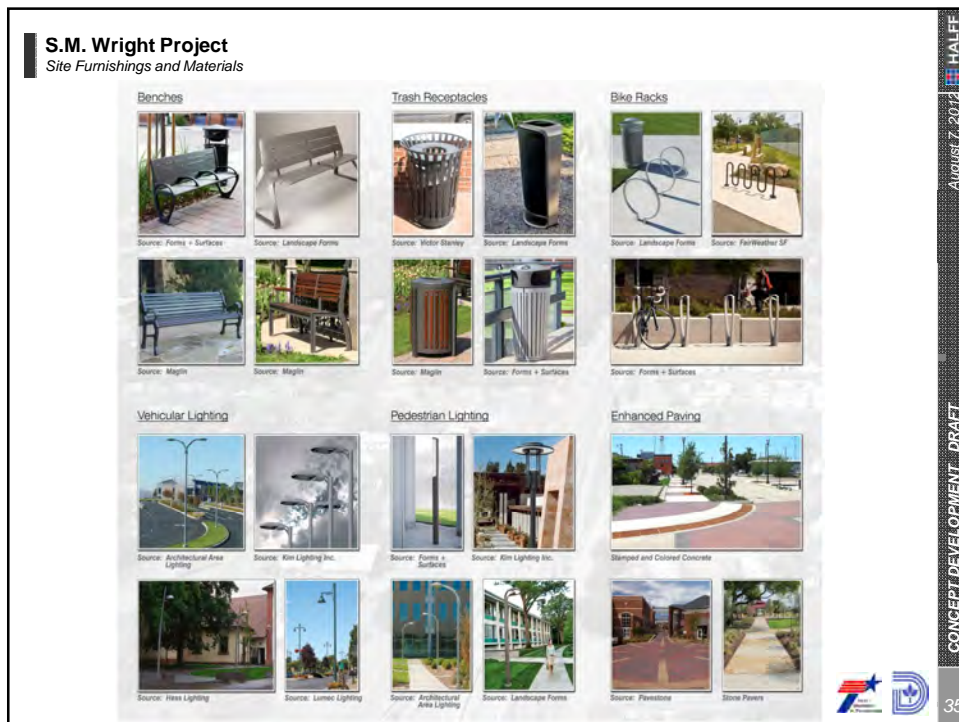




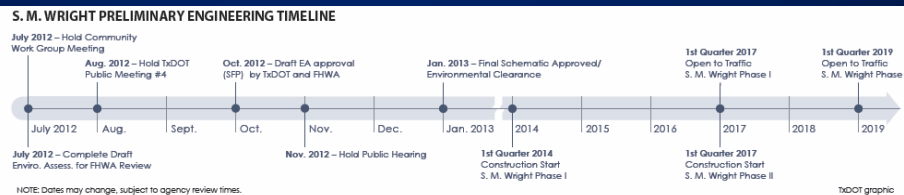








- S.M. Wright Project Schematic & Environmental Review & Approval 6 month process
- S.M. Wright Public Hearing November 2012
- FHWA Approval (anticipated) January 2013
- S.M. Wright Project Phase 1 Construction 2014 2016 (Dependent on Approvals)
- S.M. Wright Project Phase 2 Construction 2017 2019 (Dependent on Approvals)
- Adjacent Corridor Redevelopment (City of Dallas) Ongoing



Next Steps



Nasser Askari, P.E.
 TxDOT Project Manager

Texas Department of Transportation
 4777 E. Highway 80
 Mesquite, Texas 75150
 Phone: 214 320 6100
 Fax: 214 320 4470

Or visit the project web site at:
www.smwrightproject.org

For More Information...

