

Welcome

Community Connectors Meeting: Lady Bird Lake Segment

Wednesday, March 26, 2025
Travis Early College High School

**Why am I
here
today?**

To learn about construction along I-35 from Holly Street to SH 71/Ben White Boulevard.

What is Community Connectors?

- Purpose:
 - Foster open dialogue between community members and the I-35 Capital Express Central project team.
- Objectives:
 - Informed community: Updates on progress, timelines and impacts. Providing contact information for neighbors.
 - Transparency: Consistent, early and accurate information.
 - Mitigation Planning: Address disruptions proactively.



I-35 Capital Express Central: Project Phasing



Lady Bird Lake Segment

- **Limits:** Holly Street to SH 71/Ben White Boulevard.
- **Project Details:**
 - Add two non-tolled high-occupancy vehicle managed lanes on I-35.
 - Reconstruct Lady Bird Lake bridge.
 - Construct a single-point urban interchange (SPUI) at Riverside Drive.
 - Construct a pedestrian-only bridge at Woodland Avenue.
 - Improve bicycle and pedestrian paths.
 - Accommodate current and future Capital Metro routes.
- **Construction start:** February 2025
- **Contractor:** Balfour Beatty Construction



Existing Lady Bird Lake bridge



Planned east pedestrian bridge along Lady Bird Lake bridge

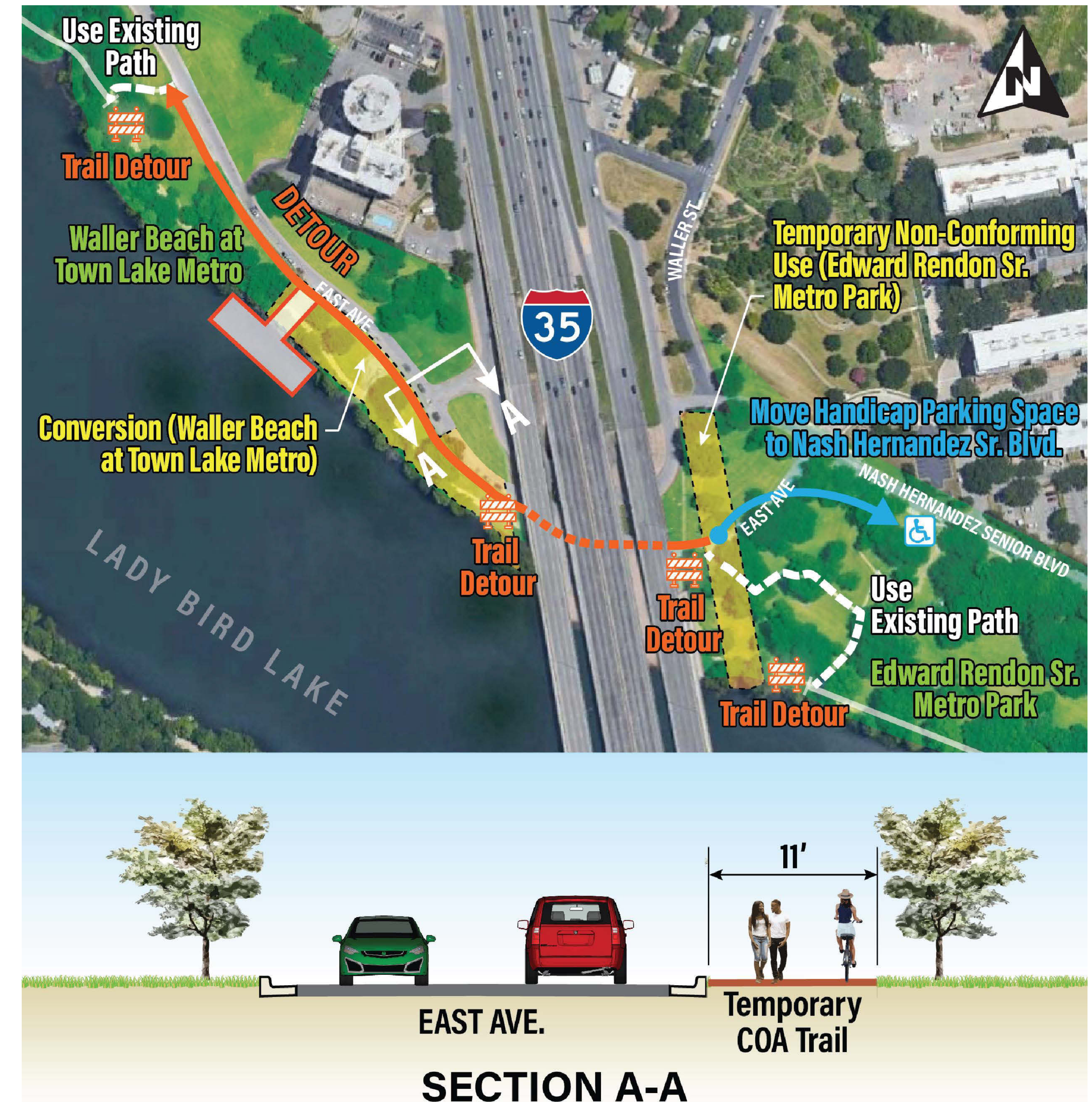
Overview of Trail Closures at Lady Bird Lake

- TxDOT is committed to maintaining access to the trail throughout construction.
- Full closure of the trails and waterway are limited to:
 - Three times a year for a 3–5-day durations, weather permitting.
- Nightly trail closures along Lady Bird Lake will be allowed from 10 p.m. to 5 a.m.
- Detours for the Ann and Roy Butler trail and the Boardwalk at I-35 during construction.



Trail Impacts – Ann Roy Butler Hike and Bike Trail

- Construction Easements:
 - Staging
 - Materials storage
 - Construction dock (e.g. barge)
- Impacts:
 - Trail detours
 - Boating and recreational restrictions
 - Parking limitations



Trail Impacts at Lady Bird Lake



Anticipated Construction Schedule

Phase One WE ARE HERE

- Reconstruction and widening of I-35 shoulders for traffic control.
- Construction of Lady Bird Lake east pedestrian bridge and northbound I-35 frontage road.
- Reconstruction of Riverside Drive overpass and intersections.
- Construct new shared-use-path from Woodward to SH 71.
- Start construction of Woodland Avenue pedestrian bridge.

Phase Three

- Reconstruction of northbound and southbound I-35 mainlanes and entrance ramp at Lady Bird Lake.

Phase Two

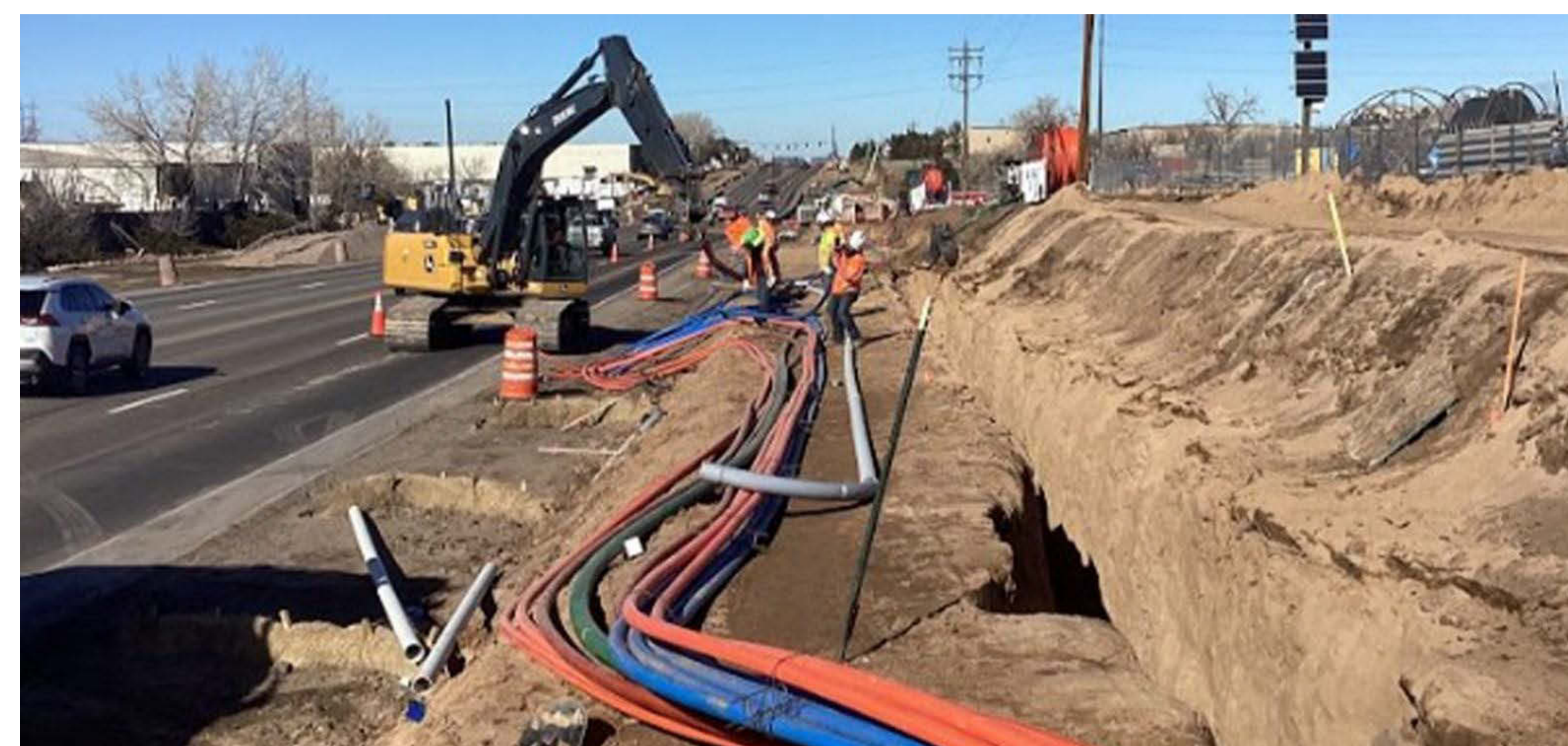
- Construction of northbound I-35 mainlane bridge at Lady Bird Lake.
- Reconstruction of I-35 mainlanes.
- Continue construction of Woodland Avenue Pedestrian Bridge.

Phase Four

- Construction of Lady Bird Lake west pedestrian bridge and southbound I-35 frontage road.
- Remove traffic barriers.
- Install signage and pavement markings.

Construction Start and Initial Work

- Striping and lane shifts.
- Tree trimming and removal.
- Utility relocation.
- Barrier placement and traffic control setup.
- Earthwork excavation and temporary retaining walls.



Upcoming Work: 3 – 12 Months

- Utility relocation/installation and temporary roadway widening
 - Location:
 - I-35 from Holly Street to SH 71/Ben White Boulevard
- Riverside Drive reconstruction
 - Location:
 - Riverside Drive
 - Activities:
 - Excavation
 - Constructing a retaining wall and bypass lane
- Bicycle and pedestrian path improvements
 - Location:
 - Southbound I-35 frontage road
 - Activities:
 - Reconstructing and widening pedestrian paths.

Stay Connected!



VOICEMAIL

(512) 366-3229



EMAIL

CapExCentral@txdot.gov



MAIL

I-35 Capital Express Central
Project Team
1949 S. I-35 Frontage Road
Austin, TX 78741



ONLINE

www.txdot.gov/mymobility35

