

DIVERGING DIAMOND INTERCHANGE FACT SHEET

Diverging diamond interchanges (DDIs) are proposed for intersections with a high volume of left-turning traffic. DDIs allow vehicles to travel more quickly through an intersection by temporarily shifting traffic to the left side of the road. This allows through-traffic and left-turning traffic to proceed through the intersection simultaneously, eliminating the need for a left-turn arrow.



To help drivers navigate, DDIs are designed with overhead signs, pavement marking and traffic signals.

How It Works

- Traffic signals are installed at crossover points. After a driver has crossed over they can:
 - 1 Make a protected left turn, rather than wait for oncoming traffic to clear or for a left-turn signal.
 - 2 Continue straight and shift back to the right side of the roadway once clearing the intersection.
- North and south-bound traffic can:
 - 3 Bypass the intersection by staying on the Loop 360 mainlanes or using a bypass lane if available.



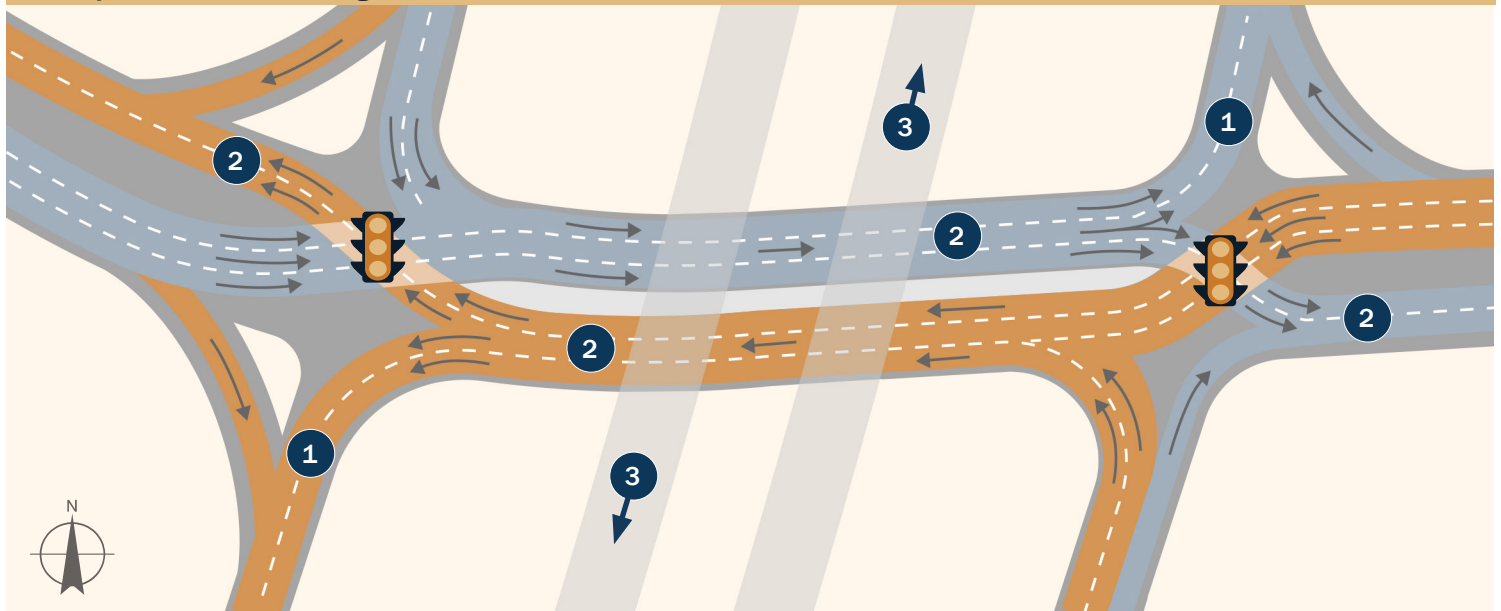
Benefits of a Diverging Diamond Interchange

- Enhances safety by reducing potential crash points at intersections.
- Increases mobility by allowing more cars to move through an intersection.
- Accommodates more vehicles turning left without adding more lanes.
- Better sight distance at turns.



Example of a DDI Interchange

**This illustration is conceptual and subject to change.*



By shifting traffic, drivers can:

- 1 Make a protected left turn, rather than wait for oncoming traffic to clear or for a left-turn signal.
- 2 Continue straight and shift back to the right side of the roadway once clearing the intersection.
- 3 Through-traffic bypasses the intersection using the mainlanes or a bypass lane.



FIND OUT MORE
www.LOOP360PROJECT.com

FOLLOW US ON TWITTER
[@Loop360Project](https://twitter.com/Loop360Project)



CONTACT US

TxDOT Public Information Officer
Brad Wheelis

Bradley.Wheelis@txdot.gov | 512.832.7060