

## Major travel impacts at I-30/Gus Thomasson Road start June 23 in Mesquite

**MESQUITE** – As part of the ongoing I-635E widening and improvement project, two major impacts are scheduled to start this weekend at the I-30/Gus Thomasson Road interchange.

- All lanes of north and southbound Gus Thomasson Road will be closed over I-30 from 8 p.m. Friday, June 23 through spring 2024. Drivers will be able to access Gus Thomasson Road by using the eastbound and westbound I-30 frontage roads, U-turning at either Galloway Avenue or Motley Drive during the months of its closure. (Refer to Exhibit A Below)
- Also this weekend, all lanes of eastbound and westbound I-30 will be closed from 8 p.m. Saturday, June 24 to 11 a.m. Sunday, June 25 for bridge construction. Mainlane drivers will be detoured to use the frontage roads to access the next available entrance ramps to I-30 (Refer to Exhibit B)

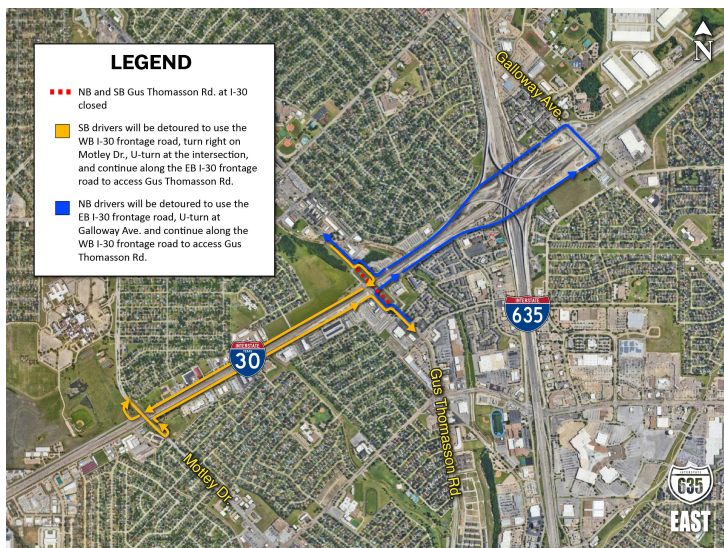
Drivers are urged to start planning alternate routes and extra travel time in this corridor. All scheduled work and closures are subject to weather or other unforeseen circumstances.

For additional information related to the 635 East Project, visit [www.635east.com](http://www.635east.com).

###

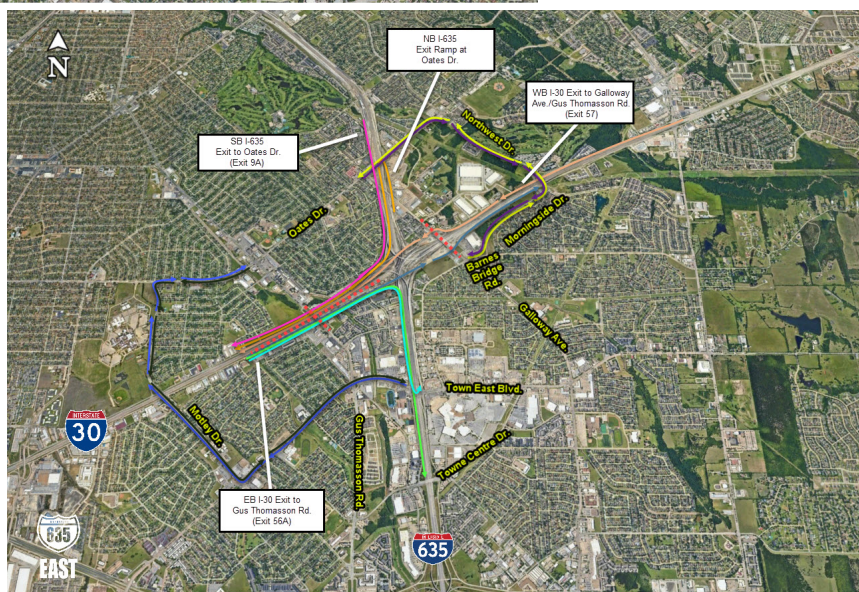
### EXHIBIT A

All lanes along NB and SB Gus Thomasson Rd. at I-30 closed June 23 through spring 2024



### EXHIBIT B

All lanes along EB and WB I-30 at Gus Thomasson Rd. closed June 24 from 8 p.m. to 11 a.m.



### LEGEND

- Red dashed lines: Both directions of I-30 at Gus Thomasson Rd. as well as Gus Thomasson and Galloway Ave. cross streets closed.
  - Blue arrows: Full closure of EB I-30 at Gus Thomasson - EB I-30 mainline drivers will be detoured to take the exit to Gus Thomasson Rd./Galloway Ave./Northwest Dr. (Exit 56A) and travel along the frontage road to access the WB I-30 entrance at Northwest Dr.
  - Orange arrows: Full Closure WB I-30 at Gus Thomasson - WB I-30 mainline drivers will be detoured to take the exit to Galloway Ave. (Exit 57) and travel along the frontage road to access the WB I-30 entrance at Gus Thomasson Rd.
  - Green arrows: EB I-30 Direct Connectors to NB/SB I-635 (Exit 56B & 56C) Closed - EB I-30 drivers will be detoured to the frontage road prior to Gus Thomasson. Continue straight along the frontage road towards the SB I-635 frontage road. For drivers headed to SB I-635, continue straight to access the entrance at Town East Blvd. For drivers headed to NB I-635, take the Town East Blvd. U-turn onto the NB I-635 entrance ramp.
  - Yellow arrows: NB/SB I-30 Direct Connectors to WB I-30 (Exit 8) Closed - NB I-635 mainline drivers that are headed for WB I-30 will be detoured to take the NB I-635 exit to Oates Dr. (Exit 9A) and U-turn to access the SB I-635 frontage road, remaining on the frontage road to access the WB I-30 frontage road, leading the WB I-30 entrance at Gus Thomasson. SB I-635 mainline drivers that are headed for WB I-30 will be detoured to take the SB I-635 exit to Oates Dr. and remain on the SB I-635 frontage road, following the same detour that will lead to the WB I-30 entrance at Gus Thomasson.
  - Purple arrows: All lanes along NB & SB Galloway Ave. at I-30 Closed - Local traffic will be detoured to the following alternate streets to get around the closure: Barnes Bridge Rd., Morningside Dr., Northwest Dr. and Oates Dr.
  - Blue arrows: All lanes along NB & SB Gus Thomasson Rd. at I-30 Closed - Local traffic will be detoured to the following cross streets to get around the closure: Oates Dr., Motley Dr., and Town East Blvd.
- NOTE:** This specific detour will only be in place for the evening of 6/24 through the following morning.