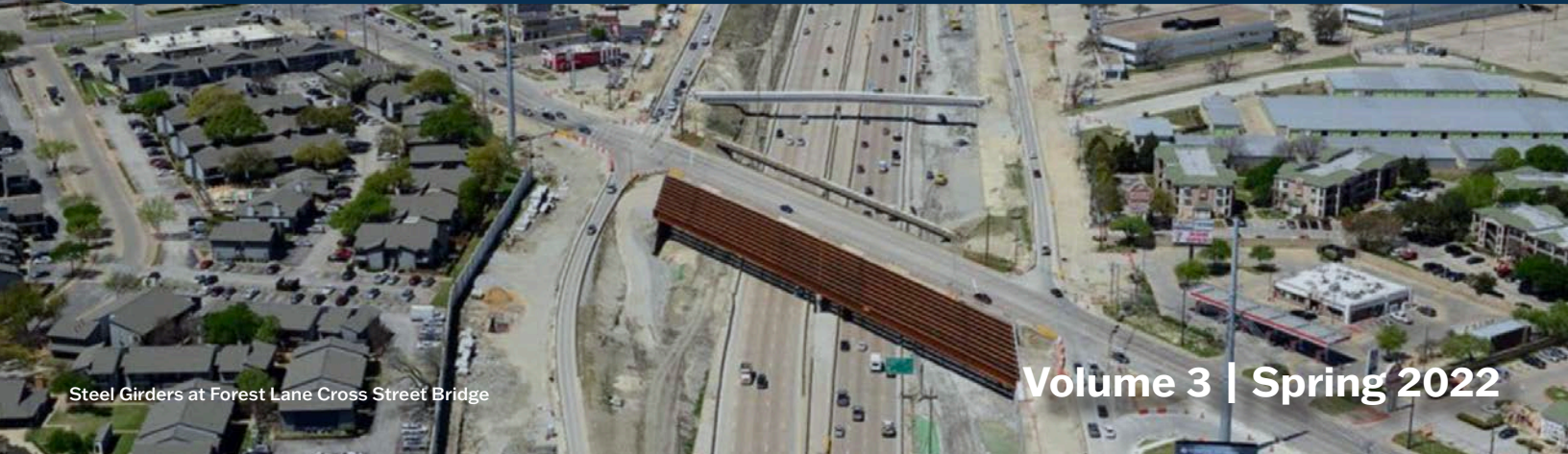




# THE 635EXCHANGE



Steel Girders at Forest Lane Cross Street Bridge

Volume 3 | Spring 2022

## SKILLMAN STREET IMPROVEMENTS KICKED INTO HIGH GEAR

Keeping Up with Construction Progress at Skillman Street

Ongoing construction of mainlane bridges, frontage roads, storm drainage and completing overhead and underground utility relocations are just some of the major activities that are happening across the 11-mile corridor, as the project team makes way for subsequent phasing and planned traffic switches this year.

As part of these projectwide activities, you may have also noticed what looks like construction of another bridge crossing adjacent from the Skillman Street bridge. Beams and deck have been placed west of the existing Skillman Street overpass, progressing to what will soon be a

temporary bridge that will accommodate traffic through the intersection. Construction of the temporary bridge crossing will be finished by late spring. This enables a major traffic switch to occur. Existing traffic will be shifted onto the newly constructed bridge, allowing the existing bridge to be demolished.



## WHAT'S INSIDE

Skillman Street Improvements Kicked Into High Gear .....	1
DBE Spotlight - Paniolo .....	4
TxDOT Connect2U Program.....	5
Rounding Up Area Business.....	5
Project Progress: Current Focus .....	6
PLC Job Opportunities .....	7
Let's Get Connected.....	8

### Skillman Temporary Bridge

That's right, you read that correctly. What is built to the west of the Skillman overpass is a bridge that will maintain traffic through the intersection temporarily while the existing overpass simultaneously undergoes a full reconstruction. Beginning this summer through the remainder of the 635 East Project, traffic will *temporarily* utilize the western bridge crossing, maintaining two lanes in each direction through the intersection during construction.

At times, temporary overnight closures will be required at the intersection to facilitate construction which will be performed during off-peak travel times to minimize impacts to the traveling public.

Once traffic begins utilizing the temporary bridge, the existing Skillman bridge will be demolished and reconstructed.

*continued on page 2*



TEXAS  
CLEAR  
LANES



## SKILLMAN STREET IMPROVEMENTS: CONTINUED

continued from page 1

### The Future Skillman Overpass

Unlike the rest of the intersecting cross streets to be renovated along the 11-mile project, the necessary improvements under way for Skillman go beyond a full reconstruction. Skillman Street will be the only cross street along the project that will incorporate unique aesthetic treatments within its construction scope.

Major plans for the Skillman Street intersection include:

- Building a signature steel arch bridge
- A straightened roadway alignment
- Added U-turns in both directions along Skillman and I-635
- Pedestrian walkways
- Brick pavers
- Dynamic color-changing lights on the bridge

After all construction of the permanent Skillman bridge is complete, traffic will be switched to officially begin utilizing the newly constructed permanent Skillman bridge. The temporary bridge will be deconstructed. Once removed, the materials will be recycled elsewhere along the project.

### Fabrication of an Iconic Bridge

Dubbed as the gateway to Lake Highlands, the signature steel arch bridge that will be installed at Skillman is currently being fabricated in Florida by Veritas Steel, a company that specializes in structural steel and bridge development.

Steel fabrication commenced in 2021 to prepare for planned installation in 2023. | ■



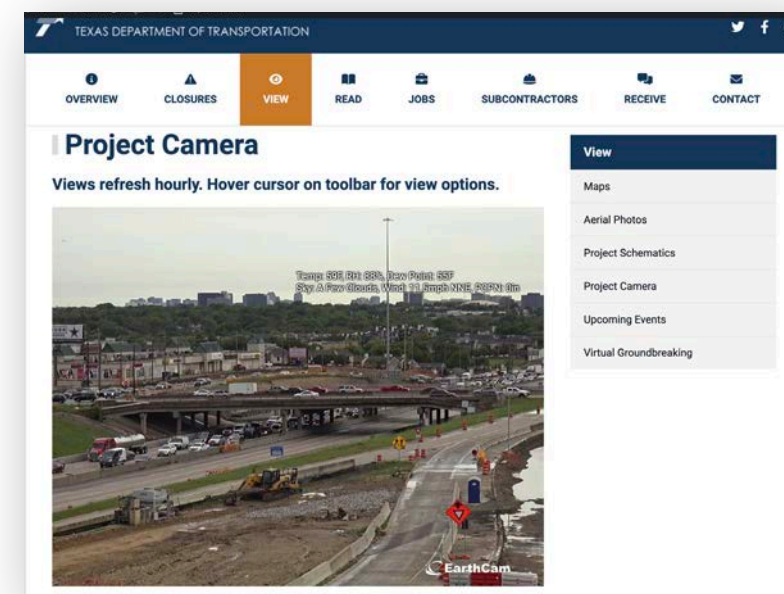
## NEW PROJECT CAMERA: SKILLMAN STREET

If you're wondering about our progress in this area or would like to check traffic before your commute, visit our Project Camera. We have added a new project camera at the Skillman Intersection so you can view updates to the new Skillman Bridge, hourly!



If you've viewed our project camera before, then you know the drill. In December 2020, we unveiled a new Project Camera on the 635 East website to provide access to see four birds-eye-view angles of the interchange at I-635 and I-30. Powered by EarthCam, these views update every hour with a live snapshot of the construction along the corridor. An archive of all previous images is also available and viewers can play a time-lapse to see the improvements.

The project camera at the interchange at I-635 and I-30 is still live and both cameras are available on our website. Check it out under the "View" tab at 635east.com. | ■



View the Project Camera under the **View** tab.

## SKILLMAN STREET TIMELINE

A key timeline for the Skillman bridge is outlined below:

2022

**Late Spring 2022**  
Temporary bridge construction complete and open to public

**Summer 2022**  
Bridge demo of existing Skillman Street bridge

2023

**Early 2023**  
Steel erection to begin

2024

**Mid 2024**  
Traffic switched onto newly constructed permanent Skillman bridge

\*dates subject to change

Photos below courtesy of Veritas Steel





## DBE SPOTLIGHT: DEREK NAKAMURA

*(Paniolo Construction Services)*



Derek Nakamura is the founder and owner of Paniolo Construction Services, a Dallas-Fort Worth based construction services firm. Nakamura chose to apply for the Texas Department of Transportation Disadvantaged Business Enterprise (DBE) program to help open doors and gain more exposure as a new independent business. Since becoming a DBE, Paniolo has successfully won work on numerous design-build projects throughout DFW and has been exposed to a larger breadth of work as a result. Since 2015, Paniolo employs 60 personnel and has thrived working in the diverse, ever-changing work environment of design-build construction.

Paniolo Construction Services specializes as a concrete subcontractor on numerous TxDOT projects, including the 635 East Project. Their work can be seen in concrete flatwork, curb and gutter formation, rip-rap erosion control, drainage structure work like flumes, and slip form barriers. For 635 East, Paniolo has focused on concrete flatwork like driveways, drainage inlet tops, concrete barrier for bridges, frontage roads and the mainlanes.

An Illinois native, Nakamura studied construction management at Northern Michigan University. Graduating in 2011, Nakamura went to work for Ferrovial Construction three days later, moving to Texas for another TxDOT project in the mid-cities. Though he had originally intended to work in custom home construction, Nakamura is glad that he landed in roadway construction. Nakamura particularly enjoys the design-build mega projects because of the flexibility and variation in work products to deliver in a timely manner.

Nakamura is a proud husband to Caitlyn and father of three children - one, three and nine years old. It's all hands on deck at home. He loves to hunt and fish (when he has time) and still loves to travel. He and his wife love to cook for and entertain friends and family. When asked about his favorite meal to prepare for others, he answered, "a good filet with crab cakes."

His wife, Caitlyn Nakamura has also begun her own DBE, Knox Supply, a full-scale DOT supply company offering goods from tip to tail. Knox Supply specializes in rebar, fabricated rebar, chairs (the small plastic stands that support rebar within concrete), and epoxy just to name a few.

Look for more complete concrete flatwork provided by the team at Paniolo Construction Services throughout the 635 East Project as we continue to move toward substantial completion in 2024. ■

## PLC ENHANCES ITS WORKFORCE TRAINING THROUGH TXDOT'S CONNECTU2JOBS PROGRAM

As a participating employer of TxDOT's ConnectU2Jobs Program, Pegasus Link Constructors joins an array of industry organizations to assist with strengthening the pipeline of candidates interested in careers in highway construction.

"The heavy highway infrastructure industry serves as the life blood of the economy by connecting you with Texas," said Kim Hunziker, Small Business Workforce Development Analyst for the Texas Department of Transportation Civil Rights Division. "ConnectU2Jobs was created to fulfill a need for a skilled highway construction workforce."

Targeting justice-involved young adults ages 18-24, the ConnectU2Jobs program works to recruit, train and certify applicants to achieve job readiness and a career in the industry. The program was launched in fall 2021 with a ten week pilot course which provided classroom instruction and hands-on training to ten individuals.

Through the program, trainees will be able to earn wages through paid internships sponsored by potential employers. At the end of each training, graduates will continue to receive support from transition coaches for 180 days after program completion to confirm work readiness during the recruitment process for future employers.

TxDOT hopes this will bridge the gap between the demand for industry workers and the necessary training needed to place candidates in skill-related fields.

"With PLC's participation in this program, TxDOT will implement an innovative approach so that young adults can move into highway construction with careers, and not just jobs," Hunziker said. ■

For questions about the program, please contact:

**Bob Rosado**

PLC HR Director  
bob.rosado@plclbj.com  
(469) 687-8009

**Kim Hunziker**

TxDOT Small Business  
Workforce Development  
Analyst, Civil Rights Division  
kim.hunziker@txdot.gov  
www.txdot.gov



## ROUNDING UP AREA BUSINESSES



If you call an area near our project your workplace, please consider joining our Business Task Force (BTF). On our project website, we post helpful resources about construction for business owners, property managers and store managers who would like to communicate with their staff about the roadway changes and improvements as a result of the 635 East Project.

We also produce targeted and unique construction updates and videos for our BTF members. These Virtual Presentations are posted on our website and can be easily shared with your coworkers, employees, friends and neighbors. You may view our existing archive of virtual presentations here: [635east.com/business-task-force](https://635east.com/business-task-force)

You may enroll as an active member of the BTF. Please join by visiting our website, choose the Contact Tab and then select **Business Task Force**.



## PROJECT PROGRESS: CURRENT FOCUS

- Completing Utility Relocations
- Drainage Installation
- Frontage Road Construction
- Cross-Street Bridge Construction
- Direct Connector Work at the I-30/I-635 Interchange

Progress photos are available on our website under the **View Tab** and updated monthly.



Skillman Street at I-635  
April 2022



Royal Lane/Miller Road at I-635  
April 2022



Jupiter Road at I-635  
April 2022



La Prada at I-635  
April 2022



Galloway Avenue at I-30  
April 2022



I-635 interchange at I-30  
April 2022

## PLC JOB OPPORTUNITIES

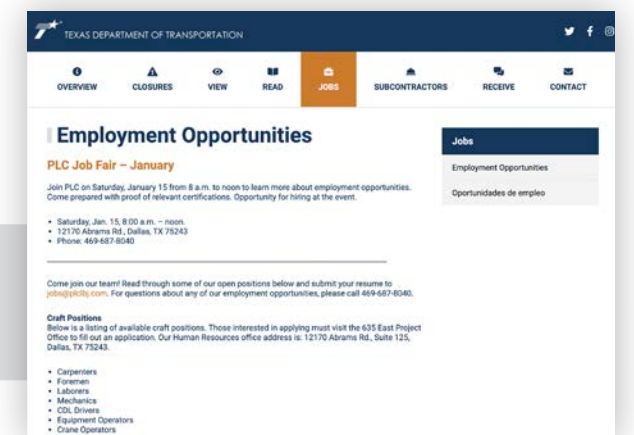
With construction activities increasing for the summer, Pegasus Link Constructors I-635 East team is actively seeking applicants for the following positions:

- Carpenters
- CDL Drivers (Dump Truck, Water Truck, Belly Dump Truck, Concrete Truck)
- Operators (Loader, Excavator, Blade)
- Equipment Operators
- Foremen
- Laborers
- Mechanics

Please apply in person at our project office:  
**12170 Abrams Rd. Suite 125, Dallas.**

For questions about any of our employment opportunities, please call 469-687-8040.

Visit the **Jobs tab** on our website for more information.



## ABOUT THE DBE PROGRAM

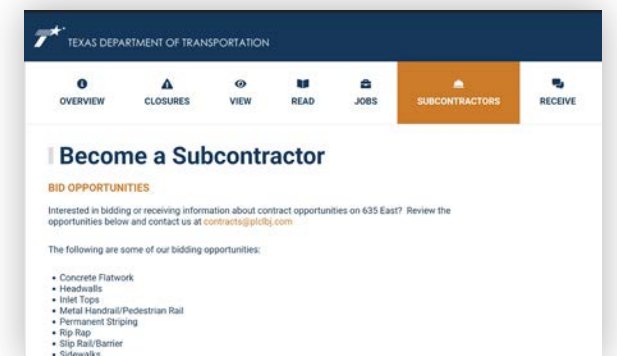
Project cost: \$1.7 Billion

DBE Project goal: 8% (\$138 Million)

Upcoming subcontracting opportunities

- Concrete Flatwork
- Headwalls
- Inlet Tops
- Metal handrail/Pedestrian Rail
- Permanent Striping
- Rip Rap
- Sidewalks
- Sod/Seed

Visit the **Subcontractors tab** on our website.



Review the opportunities above and contact us at **contracts@plclbj.com**



# THE 635EXCHANGE

## LET'S GET CONNECTED.



### VISIT US

12170 Abrams Rd.  
Second Floor  
Dallas, TX 75243



### LEARN MORE

[635east.com](http://635east.com)



### EMAIL US

[info@635east.com](mailto:info@635east.com)



### CALL US

1-833-HWY-635E



### LIKE US

[635East](#)



### SHARE MOMENTS

[@635East](#)



### FOLLOW US

[@635East](#)



### TEXT US

Subscribe to text alerts:  
Send "**635 East**" to our hotline,  
**833-HWY-635E** (833-499-6353)



### STAY UPDATED

Scan the QR code to sign up for  
our weekly E-blast or Text Alerts.