



THE 635EXCHANGE



Volume 2 | Winter 2021

BRIDGES EMERGE ALONG I-635 AND I-30

From street overpasses to direct connectors, the project makes way for new structures.

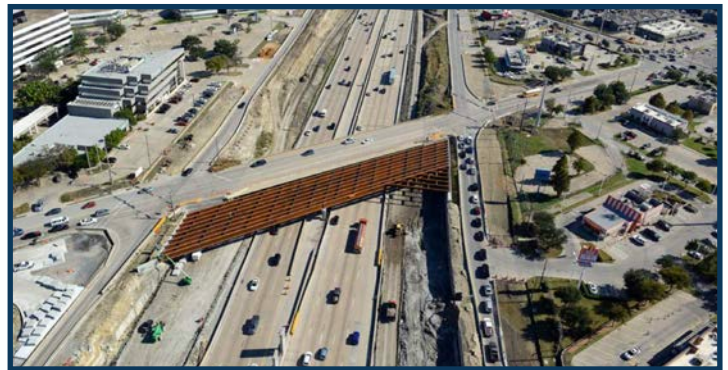
With all the new sights at every turn along the project, whether it is a new wall built or an elevated bridge structure installed, we are all spectators of the progress of an emerging new roadway.

As 2021 comes to a close, the project team has much to reflect upon the milestones achieved this year. Numerous types of activities continue to occur simultaneously in support of the soon-to-come,

new and improved highway system, which includes the installation of storm drainage facilities, overhead and underground utility relocations and numerous traffic shifts performed as accomplished work allows for the next wave of construction phasing.

WHAT'S INSIDE

Bridges Emerge Along I-635 and I-30	1
Community Engagement.....	2
I-Spy: New Frontage Roadway	2
Doing the Most Good	3
Project Progress: Current Focus	4
Rounding Up Area Business.....	5
PLC Hosts Virtual DBE Events	6
PLC Job Opportunities	7
Let's Get Connected.....	8



Steel girders at Abrams Road (pictured above), Forest Lane and Walnut Hill Lane/Kingsley Road have been installed this year, in addition to new direct connectors at the I-30/I-635 interchange. This winter, the first newly-constructed direct connector bridges at the I-30 interchange available to the public will be the:

- Southbound I-635 direct connector to Eastbound I-30
- Northbound I-635 direct connector to Westbound I-30

This will make way for removal of existing connector structures after traffic has been switched onto the new direct connectors. Additional bridge construction will occur at Jupiter Road, Centerville Road/Ferguson Road, Northwest Highway, Shiloh Road, Oates Drive, Galloway Avenue and La Prada Drive in an effort to continue establishing the new mainlane bridges in these areas. |■



TEXAS
CLEAR
LANES

COMMUNITY ENGAGEMENT:
EXCHANGE CLUB OF LAKE HIGHLANDS



The Texas Department of Transportation joined PLC in September 2021 to speak to members of the Exchange Club of Lake Highlands during their monthly breakfast event.

Members of the organization had the opportunity to hear about the project’s latest developments, with a focus on the construction progress along the project’s western-most portion, including upcoming construction activities at Skillman Street and I-635. The group also had the opportunity to learn about the TEXpress lanes along 635 East that will be open after project completion.

PLC welcomes the opportunity to present to community groups and interested organizations who live and work along the corridor. If you’re interested in requesting a PLC representative to speak to your group or organization, please fill out the **Presentation Request Form** at 635east.com under the “Contact” tab and email it to info@635east.com | ■

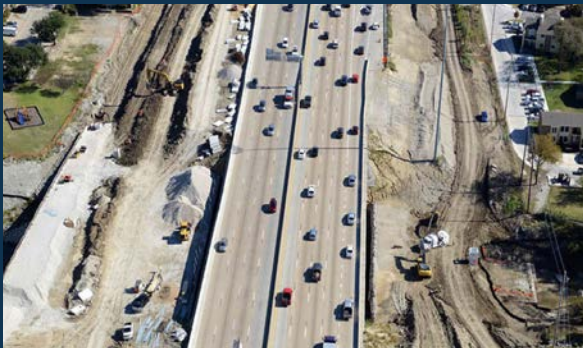


I SPY: NEW FRONTAGE
ROADWAY SECTIONS

Reminiscent of the childhood game “I Spy” that many of us played growing up, the point-and-look game along the new stretches of roadway has become unavoidable as Pegasus Link Constructors (PLC) crews add to the local topography. Aside from elevated highway bridge structures taking shape, new frontage roads are also being established in the effort to build continuous frontage roads as part of the project.

Below we’ve summarized areas where new frontage roads are being built along sections where they never existed before.

- 1. Eastbound and westbound I-635 between Forest Lane and Skillman Street
- 2. Eastbound and westbound I-635 between Royal Lane/Miller Road and Plano Road
- 3. Westbound I-635 between Kingsley Road and Plano Road
- 4. Eastbound I-635 between Centerville Road/Ferguson Road and La Prada Drive
- 5. Eastbound and westbound I-635 between La Prada Drive and Oates Drive



Frontage Road construction between Forest Lane and Skillman Street
November 2021

PLC COMMUNITY OUTREACH: DOING THE MOST GOOD

Pegasus Link Constructors (PLC) is committed to not only the development of the community’s infrastructure, but also its community support structure. Since project commencement, PLC has partnered with various nonprofit organizations to strengthen its contribution in the community.

In April of 2020, PLC partnered with Bridge Connection Nature School. The Bridge Connection Nature School connects young people to the wonder and study of the natural world through science. Each year, the Bridge Connection Nature School serves 35,000 students and 600 schools. PLC contributed 13 tons of topsoil to the organization for the purpose of education.

In November of 2020, PLC partnered with Good Samaritans of Garland (“Good Sam”), who works to provide food assistance and other centrally-located services for neighbors in Garland, surrounding cities and beyond. PLC collected funds and clothing donations from employees to contribute to the organization. Monetary donations from project staff were stretched even further thanks to matched funds made possible by PLC’s joint venture corporate partnership.

In August of 2021, PLC sponsored and participated in the Pull for Pompe fundraiser to support Pompe Disease Research through the Acid Maltase Deficiency Association. Hosted each year by the Precast Concrete Manufacturers Association (PCMA), the event involved a family-friendly clay shooting competition where teams battled for a chance at the podium.

In November of 2021, PLC partnered with Mesquite-based nonprofit, Raising the Bridge. Raising the Bridge serves at-risk youth aged 12 to 18 through support, mentorship, life skills enhancement and athletic programs. The organization is currently raising funds for a youth center to host sustainable life skills programs, study areas and dedicated rooms for workshops. PLC contributed funds, educated children about careers in construction during the Raising the Bridge Boys Retreat and hosted a construction equipment demonstration. | ■



PROJECT PROGRESS: CURRENT FOCUS

- Completing Utility Relocations
- Drainage Installation
- Frontage Road Construction
- Cross-Street Bridge Construction
- Direct Connector Work at the I-30/I-635 Interchange

Progress photos are available on our website under the **View Tab** and updated monthly.



Frontage Road Construction at Plano Road
November 2021



Northbound I-635 interchange at I-30
November 2021

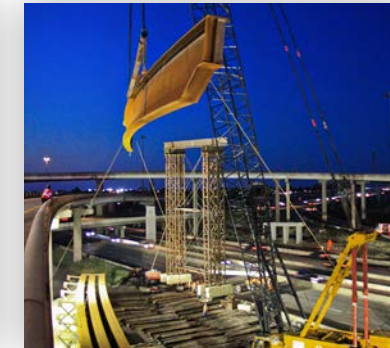


Steel girders at Forest Lane and Abrams Road
November 2021

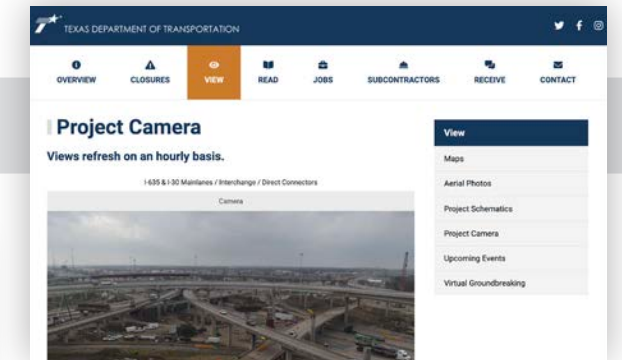


Gus Thomasson Road at I-30
November 2021

View the Project Camera under the **View tab**.



Steel girders at the I-30/I-635 interchange
June 2021



Back in June, the first steel girder unit was placed for the new northbound I-635 to westbound I-30 direct connector at the I-30/I-635 interchange. The direct connector is just one of the 635 East Project's 61 total bridges. The spans installed were the first out of the project's 38 million pounds of structural steel.

PLC will continue building bridge and roadway structures at the interchange, with the first direct connectors opening soon. This is one of the first steps of a series of our highly complex traffic phasing plan to rebuild the 4-level interchange.

ROUNDING UP AREA BUSINESSES

If you call an area near our project your workplace, please consider joining our Business Task Force (BTF). On our project website, we post helpful resources about construction for business owners, property managers and store managers who would like to communicate with their staff about the roadway changes and improvements as a result of the 635 East Project.

We also produce targeted and unique construction updates and videos for our BTF members. These Virtual Presentations are posted on our website and can be easily shared with your coworkers, employees, friends and neighbors. You may view our existing archive of virtual presentations here: 635east.com/business-task-force

You may enroll as an active member of the BTF. Please join by visiting our website, choose the Contact Tab and then select **Business Task Force**.



View the business task force page.



PLC HOSTS VIRTUAL DBE OUTREACH EVENTS IN OCTOBER AND NOVEMBER

The project's Disadvantaged Business Enterprise (DBE) program is designed to level the playing field for small disadvantaged, minority- and women-owned businesses pursuing contracts along the project.

In October 2021, PLC hosted a virtual DBE outreach event to share several upcoming subcontracting opportunities for the 635 East Project. The presentation was led by Project Director Larry Luke and Lead Contracts Administrator Jose Argenal, who provided an overview of the project, information about the DBE program and details about upcoming bidding opportunities.

Completion of the Subcontractor's Questionnaire is required to be considered for work. The questionnaire is available at 635east.com/become-a-subcontractor and must be returned via email to contracts@plclbj.com. Completing the questionnaire also gets you access to our archive of DBE event recordings, available on our website.

As an added resource to DBEs, PLC is offering one-on-one sessions to answer any questions bidders may have and to discuss how companies may be a good fit based on project needs. To schedule a one-on-one session, businesses should email Jose Argenal at contracts@plclbj.com and PLC will coordinate a meeting with the relevant internal teams.

An additional DBE Outreach Event was held in November 2021 for those who could not attend in October. Since the DBE events, more subcontracting packages have been released. To stay up to date on bidding opportunities, visit the project website at 635east.com or email contracts@plclbj.com. |■

ABOUT THE PROGRAM

Project cost: \$1.7 Billion

DBE Project goal: 8% (\$138 Million)

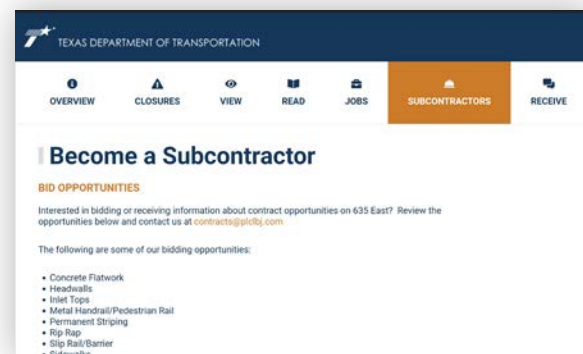
Upcoming subcontracting opportunities

- Concrete Flatwork
- Headwalls
- Inlet Tops
- Metal handrail/Pedestrian Rail
- Permanent Striping
- Rip Rap
- Slip Rail/Barrier
- Sidewalks
- Sod/Seed



Review the opportunities above and contact us at contracts@plclbj.com

Visit the **Subcontractors tab** on our website.



PLC JOB OPPORTUNITIES

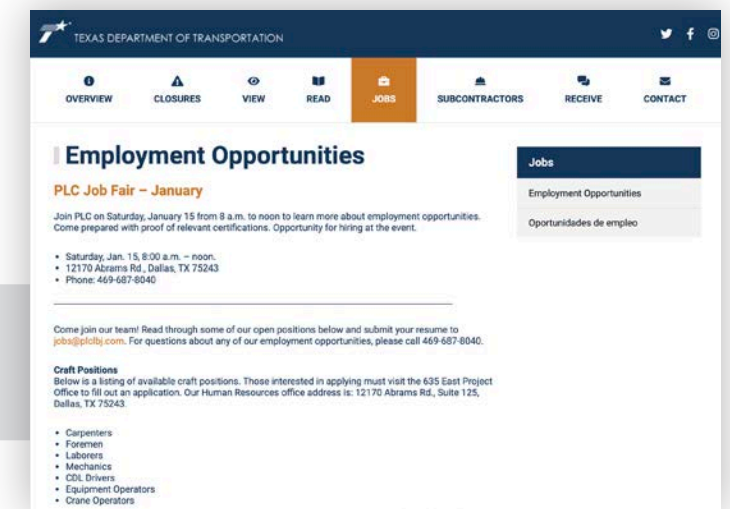
With construction activities increasing for the fall, Pegasus Link Constructors I-635 East team is actively seeking applicants for the following positions:

- Carpenters
- CDL Drivers
- Crane Operators
- Equipment Operators
- Foremen
- Laborers
- Mechanics

Please apply in person at our project office:
12170 Abrams Rd. Suite 125, Dallas.

For questions about any of our employment opportunities, please call 469-687-8040.

Visit the **Jobs tab** on our website for more information.



READ MORE ABOUT OUR BENEFITS

Employee Referral Program

PLC awards a \$300 referral bonus to our first participants.

On-the-Job Training

PLC offers on-the-job training for new hires to immediately sharpen skill sets upon hiring – we currently have 25 candidates enrolled in this program.

Partnership with TCCA

PLC has partnered with Texas Construction Career Academy (TCCA), a local training group that offers free certifications on construction trades and safety.

Call our Jobs line at (469) 687-8040 or email jobs@plclbj.com for more info.



THE 635EXCHANGE

LET'S GET CONNECTED.



VISIT US

12170 Abrams Rd.
Second Floor
Dallas, TX 75243



LEARN MORE

635east.com



EMAIL US

info@635east.com



CALL US

1-833-HWY-635E



LIKE US

[635East](#)



SHARE MOMENTS

[@635East](#)



FOLLOW US

[@635East](#)



TEXT US

Subscribe to text alerts:
Send "**635 East**" to our hotline,
833-HWY-635E (833-499-6353)



STAY UPDATED

Scan the QR code to sign up for
our weekly E-blast or Text Alerts.