



# THE 635EXCHANGE



## WHAT'S INSIDE

Out with the Old, In with the New .....	1
Engaging Area Businesses .....	2
Project Progress: Galloway Avenue.....	3
PLC's DBE Outreach Event .....	4
Introducing: Project Camera.....	5
PLC Job Opportunities .....	6
Lane Closures Guide .....	7

## OUT WITH THE OLD, IN WITH THE NEW

### Bridge Removal and Construction Along I-635 and I-30 Continues This Year

With the 635 East Project's first year of construction complete, crews are in full swing as the project welcomes its second year of construction.

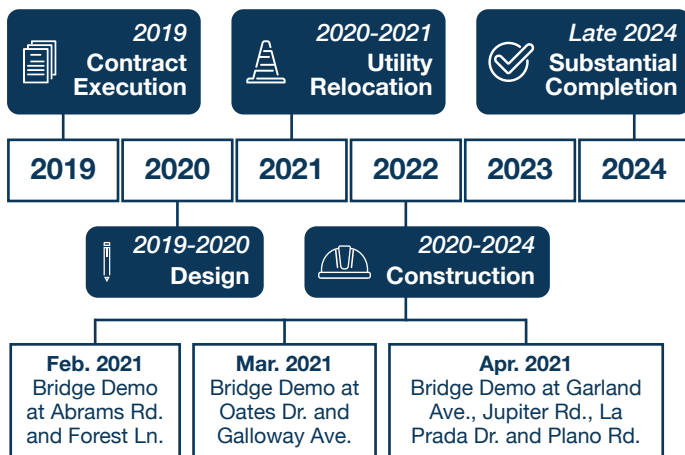
Construction on 635 East will take approximately five years. The first year of construction consisted primarily of designing the new roadway. The project's remaining three years will bring an assortment of activities. They range from constructing new bridges, mainlanes and continuous frontage roads to expanding underpass and overpass lanes at cross streets to rebuilding direct connectors at the I-30/I-635 interchange. Construction will also incorporate a signature bridge at Skillman Street that will provide drivers a scenic route through the intersection when complete. Visit [page 2](#) for a rendering of the new bridge.

Last year, the 635 East Project brought new meaning to productivity during a global pandemic. We performed a series of traffic shifts along the mainlanes to prepare work zones, closed the managed lane along I-635 and I-30 for the project duration, and began construction of the temporary bridge at Skillman Street that will serve as an alternate access to traffic as the actual bridge undergoes reconstruction. We also had a virtual groundbreaking in the fall.

In 2021, construction started on a high note by mobilizing various types of bridge work. If you are

*continued on page 2*

## PROJECT TIMELINE



TEXAS  
CLEAR  
LANES



continued from page 1

keeping up with project progress, you may catch more instances of partial bridge removals this year, installation of new bridge structures, walls and foundations, as well as an uptick in lane closures required to facilitate the widely coordinated work.

Utility relocations and drainage installation for the new highway system will also continue this year, increasing activity along frontage roads and street crossings.



Skillman Street at I-635  
March 2021

Rendering of bridge design  
at Skillman Street

In the first three months of 2021, partial bridge demolition has taken place at the following I-635 intersections: Forest Lane, Abrams Road, Oates Drive and Galloway Avenue. The I-30 interchange continues to see construction of new direct connectors. The brand-new Galloway Avenue overpass at I-30 is halfway complete, leading the way as the first intersecting bridge along the project to be fully reconstructed. Find out more about Galloway Avenue on [page 3](#).

Portions of old pavement along I-635 and I-30 mainlanes are steadily being removed. Gradually, we will begin saying goodbye to the pieces of roadway that were originally placed in the 60s. Seeing parts of roadway history crushed, excavated and hauled away provides surrounding residents and adjacent communities with much anticipation for the significant improvements that are about to unfold along the project's 11-mile corridor. All of the old concrete that has been removed will be recycled to create a cement-treated base for new pavement along the project. Rebar and asphalt will also be recycled.

Make sure you are subscribed to our traffic alerts to receive notice of any upcoming work. Timely updates on our progress through our email, text, social media and website alerts will be provided. Visit [page 8](#) for ways on how to connect with us! |■

## ENGAGING AREA BUSINESSES

If your workplace is along or near our project, please consider joining our Business Task Force (BTF). On our website, we will post helpful resources about construction, targeted toward business owners, property managers and store managers who would like to communicate with their staff and customers about the roadway changes happening as a result of the 635 East Project improvements.

Keeping area businesses in the loop about upcoming construction in the area is done through our BTF virtual presentations. These targeted and unique construction updates are all posted online, as well as emailed to subscribers, and can be easily shared with your coworkers, customers, friends and neighbors.

Become an active member of the BTF by visiting our website and selecting “Business Task Force” under the Contact tab.



Sign up now!

### 635 East Business Task Force

SIGN UP TO BECOME PART OF OUR BUSINESS TASK FORCE!

The project's Business Task Force is an additional resource tailored for business owners, property or store managers who want to receive updates about specific construction information as the project progresses. Targeted content will be produced every few months, providing a detailed overview of upcoming work in areas along the project. Visit our [Business Task Force page here](#) to learn more!

Email Address

First Name

Last Name

Progress photos are available on our website under the View Tab and updated monthly.

## PROJECT PROGRESS: GALLOWAY AVENUE AT I-30

Galloway Avenue at I-30 in Mesquite is the first of many overpass/underpass intersections that will be completely renovated as a key component of the 635 East Project. Below, we took an aerial from a year ago and compared it to Galloway Avenue in spring 2021 at the intersection to show just how much construction has progressed in the area.

The bridge will fully reopen this year in late 2021 once reconstruction concludes for the remaining section of the bridge and the connecting intersections. The bridge has experienced major improvements over the past year. Below are some key milestones on the bridge.

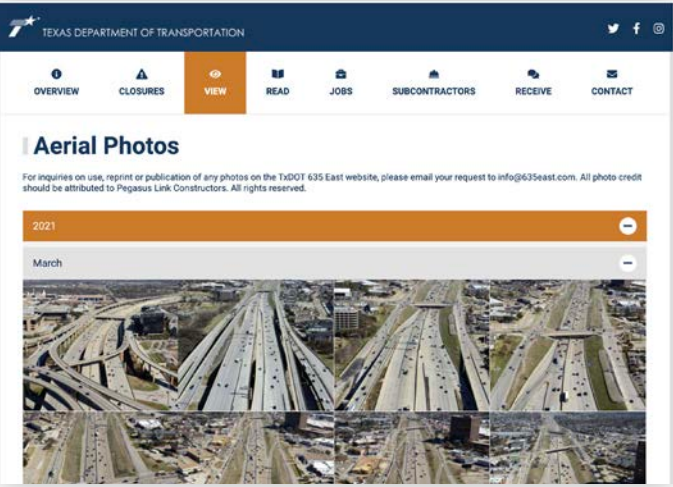
- Summer 2020 – Partial demolition of the existing Galloway Avenue overpass structure. Crews began building the permanent section while traffic was shifted into the existing lanes.
- Winter 2020 – Transitioned traffic to the newly constructed portion of the Galloway Avenue bridge over I-30. Crews successfully removed the remaining lanes to begin the next stage of reconstruction.
- Late 2021 – Galloway Avenue bridge construction to be completed. |■



Westbound view of Galloway Avenue at I-30  
September 2020



Westbound view of Galloway Avenue at I-30  
March 2021





# PLC HOSTS VIRTUAL DBE OUTREACH EVENT IN MARCH

The project’s Disadvantaged Business Enterprise (DBE) program is designed to level the playing field for small disadvantaged, minority- and women-owned businesses to pursue contracts along the project. On Thursday, March 4th, the project’s general contractor, Pegasus Link Constructors (PLC) hosted a virtual DBE outreach event to share several upcoming subcontracting opportunities for the 635 East Project. The presentation was led by PLC’s DBE Coordinator Adrienne Williams, who began with an overview of the project, information about the DBE program and goals and shared details of upcoming bidding opportunities. After announcing the particular work available for subcontractors, she explained instructions for submitting a bid, making sure to emphasize that subcontractors are encouraged to consider pieces of each package for which they can be most competitive. Subcontractors don’t have to price the entire bid package. The review team is flexible, and bidders are encouraged to consider the scope of work that would showcase how they can best perform.

After Ms. Williams explained bidding opportunities, she introduced Mr. Tony Arps of the USDOT Gulf Region Small Business Transportation Resource Center. Mr. Arps explained his role at the Resource Center and the services they offer to assist DBEs, such as access to capital and bonding education programs. Together, Ms. Williams and Mr. Arps answered the group’s questions.

Since the DBE event, several subcontracting packages have been released. To stay up-to-date on bidding opportunities, visit the project website at [635east.com](http://635east.com) or email [contracts@plclbj.com](mailto:contracts@plclbj.com). |■

## About the Program

Project cost: \$1.7 Billion  
DBE Project goal: 8% (\$138 Million)

### UPCOMING SUBCONTRACTING OPPORTUNITIES

- Concrete Flatwork
- Skillman Cross Street Construction (demolition, asphalt paving, CTB, RCP, concrete flatwork, barrier rail)
- Drainage work
- Trucking contractors
- Painting
- Fencing
- Landscaping, Seed & Sod
- Utility Adjustment Scope & Procurement

To learn more about the 635 East Project, stay up-to-date on bidding opportunities or join our DBE email list, please visit the website at [635east.com](http://635east.com).



Adrienne Williams, PLC  
DBE Coordinator



Tony Arps, USDOT  
Regional Project Director

## INTRODUCING: PROJECT CAMERA

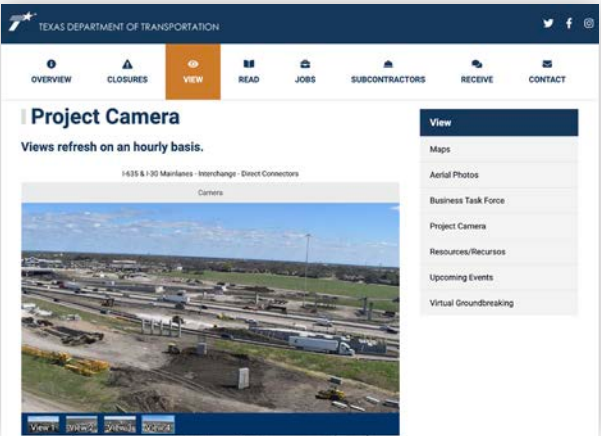
Ever wanted to see how the I-635 construction progress is coming along, but don’t have time to drive out and look? We’ve got just the thing.

Last December, we unveiled a new Project Camera on the 635 East website. This feature provides access to see four birds-eye-view angles of the interchange at I-635 and I-30. Powered by EarthCam, these views update every hour with a live snapshot of the construction along the corridor. An archive of all previous images is also available and viewers can play a time-lapse to see the improvements .

So, whether you’re wondering how far our progress has come in this area or taking a look at the traffic before your commute, the Project Camera will certainly delight your curiosity. Check it out under the “View” tab at [635east.com](http://635east.com).



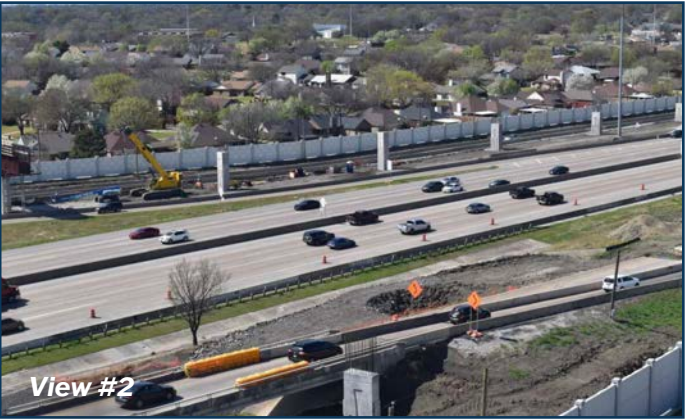
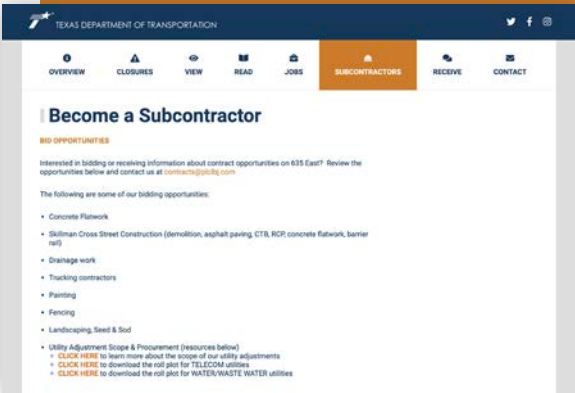
View the intersection of I-635 at I-30



The Project Camera offers views along the project, day or night!

## Contact Us

For additional questions, inquiries or to request bid package information, please email [contracts@plclbj.com](mailto:contracts@plclbj.com).





# PLC JOB OPPORTUNITIES

With construction activities increasing for the summer, Pegasus Link Constructors – I-635 East team is actively seeking applicants for the following positions:

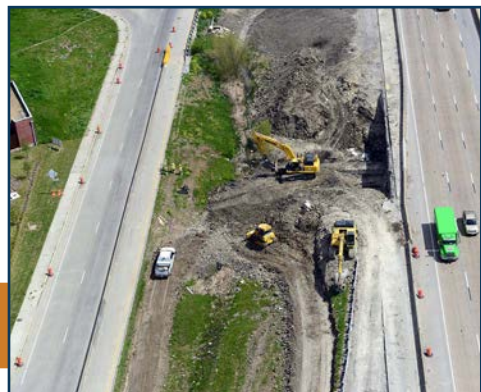
- Carpenters
- Drivers
- Laborers
- Mechanics
- CDL Drivers
- Equipment Operators
- Crane Operators

 **Please apply in person at**  
**12170 Abrams Rd. Suite 125, Dallas**

## READ MORE ABOUT OUR BENEFITS

- **Employee Referral Program**  
PLC awards a \$200 referral bonus to our first participants
- **On-the-Job Training**  
PLC offers on-the-job training for new hires to immediately sharpen skill sets upon getting hired – we currently have 25 candidates enrolled in this program.
- **Partnership with TCCA**  
PLC has partnered with Texas Construction Career Academy (TCCA), a local training group that offers free certifications on construction trades and safety.

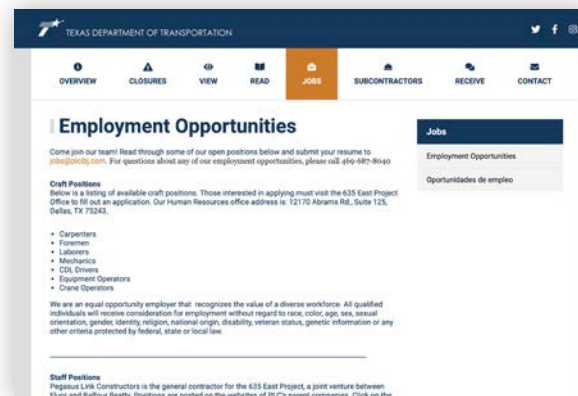
For more info: Call our Jobs line at **(469) 687-8050** or email [jobs@plclbj.com](mailto:jobs@plclbj.com) |■



THE 635EXCHANGE 6

7 THE 635EXCHANGE

Visit the Jobs tab on  
our website to stay  
up-to-date



## LANE CLOSURES GUIDE

The Different Types of Traffic Impacts to  
Expect Along the Project

Lane closures occur when crews need to perform construction activities that may disrupt traffic movement. If you have visited our Lane Closures page lately, you will see different types of traffic impacts that have happened or are scheduled to occur. Use the guide below to better understand the different types of closures you will see along the project.

- **Full Closures / All lanes Closed**  
Full lane closures are implemented during beam setting, bridge demo and other major operations that may require additional space and distance from traffic to perform the work. When all lanes are closed along stretches of roadway, it is to ensure that the traveling public are at a safe distance while major construction work takes place.
- **Temporary Ramp Closures**  
Exits, entrances and direct connectors may be closed overnight. When ramps are closed, detours are required to help redirect traffic so that drivers have an alternate route while the ramp is not available. Detour signs will be in place while the ramps are closed. Detour maps are often posted on our lane closures page before the scheduled closures to help assist in planning commutes ahead of time.
- **Various Lanes Closed**  
Multiple lanes could be closed along a stretch of roadway but at least one lane will be open to traffic at all times. No detours are required for various lane closures.
- **Permanent Closure**  
While the word “permanent” is often associated with “forever,” this is not always the case. Along the 635 East Project, “permanent closures” are associated with long-term closures, detours and relocation of access may be needed.

Below are some examples of these along the project:

- ◇ Last summer, the eastbound I-30 exit to Northwest Drive was closed. Crews relocated access further west and the permanent access to Northwest Drive will be rebuilt to remain to the west of the



old ramp location when construction is complete.

- ◇ Last fall, the eastbound I-635 frontage road U-turn between Jupiter Road and Garland Avenue was closed permanently and will be rebuilt further east closer to the Garland Avenue intersection.
- ◇ This year, there will be a long-term closure of the eastbound I-635 exit to Northwest Highway. The existing Northwest Highway exit ramp will be relocated and rebuilt west of its existing location.
- **Intermittent / Rolling Closures**  
Whether the lane is closed for a few minutes, or is facilitated by a flagging crew, intermittent or rolling closures are short-term temporary roadway blocks that will stop or redirect traffic to enable necessary activities in the vicinity. These closures should not last longer than 15 minutes at a time.
- **Traffic Shifts / Traffic Switches**  
Lane shifts or switches occur to clear an area for construction. To enable a traffic shift or switch, pavement and striping must be in place first before traffic is moved.

Have questions about lane closures, detours and other traffic impacts due to construction? Share your thoughts with us by emailing [info@635east.com](mailto:info@635east.com). |■



# THE 635EXCHANGE

## LET'S GET CONNECTED.



### VISIT US

12170 Abrams Rd.  
Second Floor  
Dallas, TX 75243



### LEARN MORE

[635east.com](http://635east.com)



### EMAIL US

[info@635east.com](mailto:info@635east.com)



### CALL US

1-833-HWY-635E



### LIKE US

[635East](https://www.facebook.com/635East)



### SHARE MOMENTS

[@635East](https://www.instagram.com/635East)



### FOLLOW US

[@635East](https://twitter.com/635East)



### TEXT US

Subscribe to text alerts:  
Send "635 East" to our hotline,  
**833-HWY-635E** (833-499-6353)



Scan the QR Code to read this newsletter in Spanish.

Escanee el código QR para leer este boletín en español.