



I-35 Northeast Expansion Central CONSTRUCTION NEWS



August 2023: Issue 11

In this issue

- 1 | Safety Minute: A Cooler Approach
- 2 | Construction Update
- 3 | Active Construction Sites
- 4 | Shifting Gears Towards Digital Design
- 5 | Contact Us

The I-35 Northeast Expansion (NEX) Central project consists of construction of approximately 9.5 miles of elevated, non-tolled lanes from I-410 North to FM 3009. The elevated lanes will provide one high occupancy vehicle (HOV) lane and two general purpose lanes in each direction. There will be direct connections to I-410 N and Loop 1604 W. Expected completion date is December 2027.

Safety Minute: A Cooler Approach



Why do we work at night? There are many answers to that question, however one of the most important factors is for the safety of our workforce. Working in extreme heat can be hazardous for construction workers.

By shifting road construction to overnight hours, workers are doing their jobs in cooler temperatures, reducing the risk of heat-related illnesses. So far in 2023, San Antonio has had over 55 days of temperatures exceeding 100°F and is on pace for over 65 days. And with the combination of concrete and metal in the work zone ambient temperatures can soar well above 100°F. Not to mention the added heat of working with asphalt that can reach temperatures of 300°F.

At TxDOT, safety is priority number one and preventing heat-related illness can also reduce the risks linked to injuries from falls, equipment operation accidents and other on-the-job incidents. Cooler temperatures at night allow for safer working conditions and increased productivity.

Construction Update



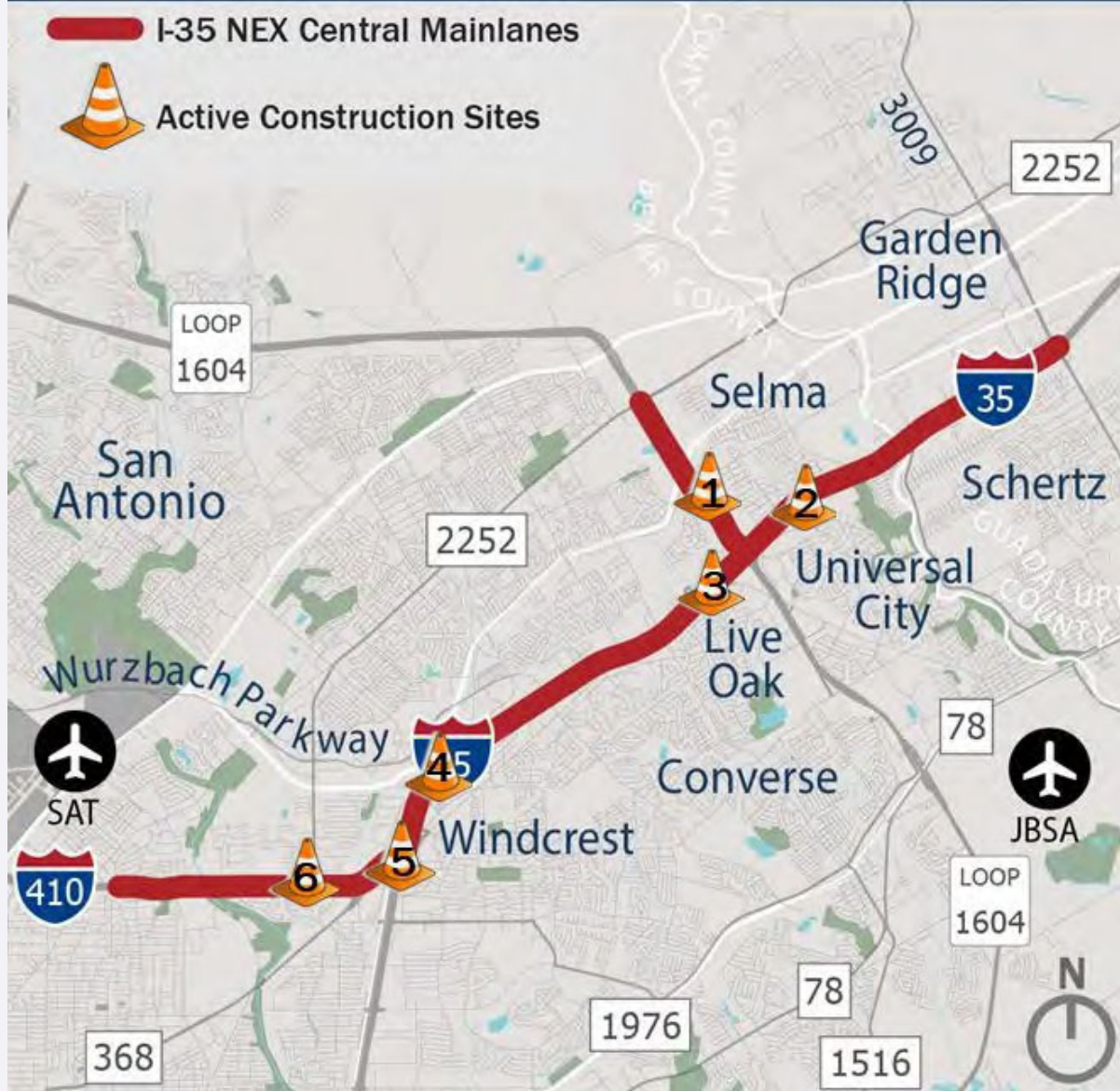
This video highlights the ongoing developments in the Loop 1604 and I-35 interchange area on the I-35 NEX Central project.

We are excited to share with you the progress being made on the I-35 NEX Central Project along Loop 1604 from Nacogdoches Road to I-35. The east and westbound lanes of Loop 1604 are dotted with columns and more columns stand over Loop 1604 at the I-35 interchange. Drilled shaft and column work continues for the overpass from I-35 southbound to the westbound lanes of Loop 1604.

Active Construction Sites

The map below highlights where active construction is currently taking place on I-35 NEX Central, indicated by the traffic cones. The active construction sites shown on the map below are intended to indicate major construction operations. You can view project information and lane closures at www.i35nex.com. Please note construction preparation work, including placement of barriers, is also ongoing within the limits of the project.

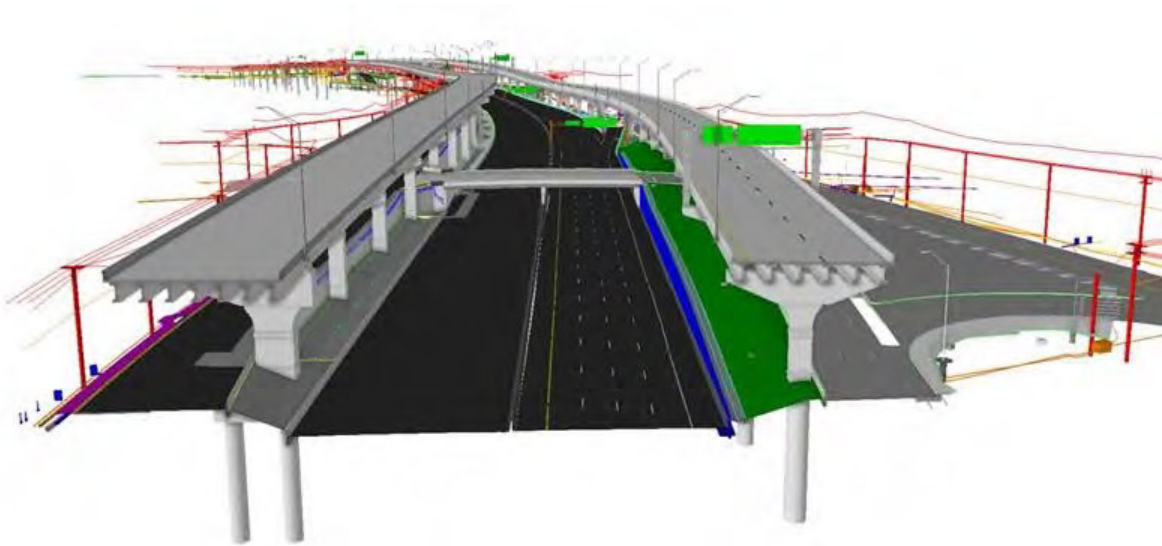
Active Construction Sites Now Through September 2023



1. Excavation of new lanes of Loop 1604. Drilled shafts and column foundations work continues in the area of the I-35 and Loop 1604 interchange. Retaining wall construction is also taking place in that area.
2. Long-term left lane closure on the southbound I-35 frontage road between Arcadia Drive and Olympia Parkway for drilled shaft work.
3. Concrete beam installations continue on southbound I-35 in the Pat Booker Road area. Long term left lane closure of the southbound I-35 frontage road from McMorris Boulevard to IKEA-RBFCU Parkway. Bridge foundations, column work, soil nail walls, and temporary road widening continues from I-35 Access Road near Shin Oak Drive to Judson Road. Column and drilled shaft work on the northbound frontage road of I-35 near Toepperwein Road.
4. Long-term alternating lane closure on southbound frontage road of I-35 between Thousand Oaks Drive and Whirlwind Drive for roadway reconstruction, paving and drilled shaft work.

5. Column construction continues at the I-35 and I-410 interchange. Drilled shaft work north of Walzem Road on the northbound and southbound side of I-35. Long-term closure on Fratt Road from I-35 to Austin Highway.
6. Drilled shaft work continues in the area of I-410 from Perrin Creek to Perrin Beitel.

Shifting Gears Towards Digital Design



A 3D model view of a portion of the I-35 NEX Central project.

Modern problems require modern solutions. Adding a total of six elevated lanes with a total length of almost 20 miles above existing lanes through a major city would have been unthinkable a decade ago. But that is exactly what is happening on the I-35 NEX Central project with the advancements in 3D modeling.

This 3D modeling creates highly accurate and detailed representations of the bridge designs and existing conditions, allows designers to visualize every aspect before construction begins, and provides a more robust design. There is also an automated design review tool to check for potential conflicts between the new design and the existing infrastructure within the 3D model to help identify design issues before construction begins.

3D design models facilitate seamless collaboration and coordination among technical stakeholders involved in road construction projects. 3D models provide a common platform for designers, engineers and construction managers to collaborate, review, and make informed decisions faster. This leads to improved project outcomes, reduced conflicts, and enhanced efficiency. 3D design models are revolutionizing the industry and pave the way for more efficient infrastructure development.

Contact Us

Questions or Comments

I-35 NEX Central Project
(726) 800-4809
i35nexcentral@txdot.gov

Public Information Office
7330 San Pedro Ave
Suite 600
San Antonio, TX 78216

Social Media

Twitter: [@i35nexcentral](https://twitter.com/i35nexcentral)
Facebook: [@i35nexcentral](https://facebook.com/i35nexcentral)

E-alert

Sign up for weekly lane closure notices and newsletters by emailing us at i35nexcentral@txdot.gov.

Project Information

www.i35nex.com

Scan here to access our website.



Don't miss an update! Please add i35nexcentral@txdot.gov to your address book.

Copyright (C) 2023 Texas Department of Transportation. All rights reserved.



I-35 NEX Central Public Information Office | 7330 San Pedro Ave, Suite 600, San Antonio, TX 78216

Unsubscribe_groufs-c@txdot.gov

[Constant Contact Data Notice](#)

Sent by i35nexcentral@txdot.gov