



I-35 Northeast Expansion Central CONSTRUCTION NEWS



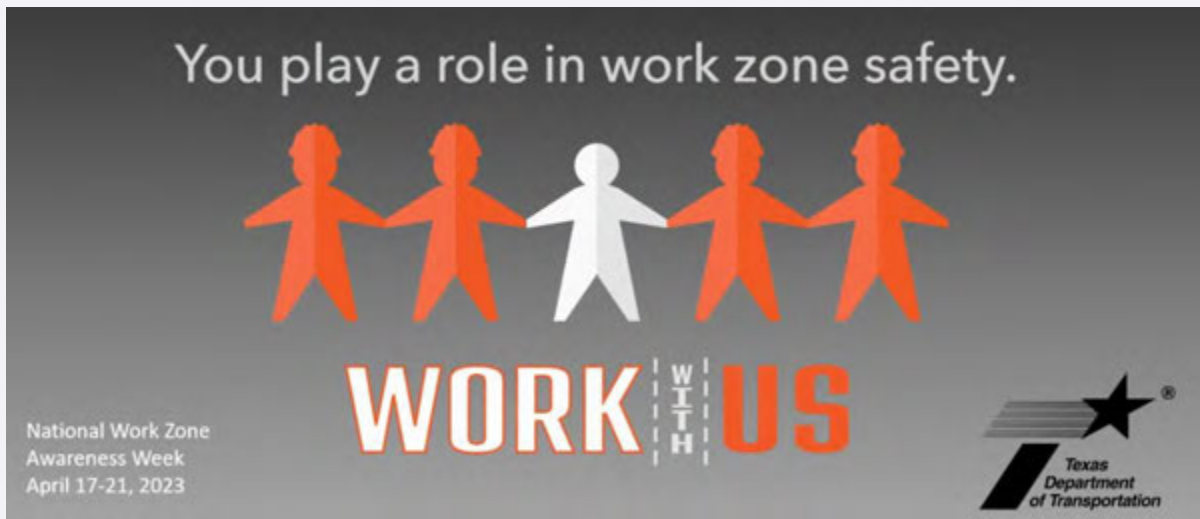
April 2023: Issue 7

In this issue

- 1 | Safety Message
- 2 | Construction Update
- 3 | Road Closure Alert
- 4 | Active Construction Sites
- 5 | In the Community
- 6 | Contact Us

The I-35 Northeast Expansion (NEX) Central project consists of construction of approximately 9.5 miles of elevated, non-tolled lanes from I-410 North to FM 3009. The elevated lanes will provide one high occupancy vehicle (HOV) lane and two general purpose lanes in each direction. There will be direct connections to I-410 N and Loop 1604 W. Expected completion date is December 2027.

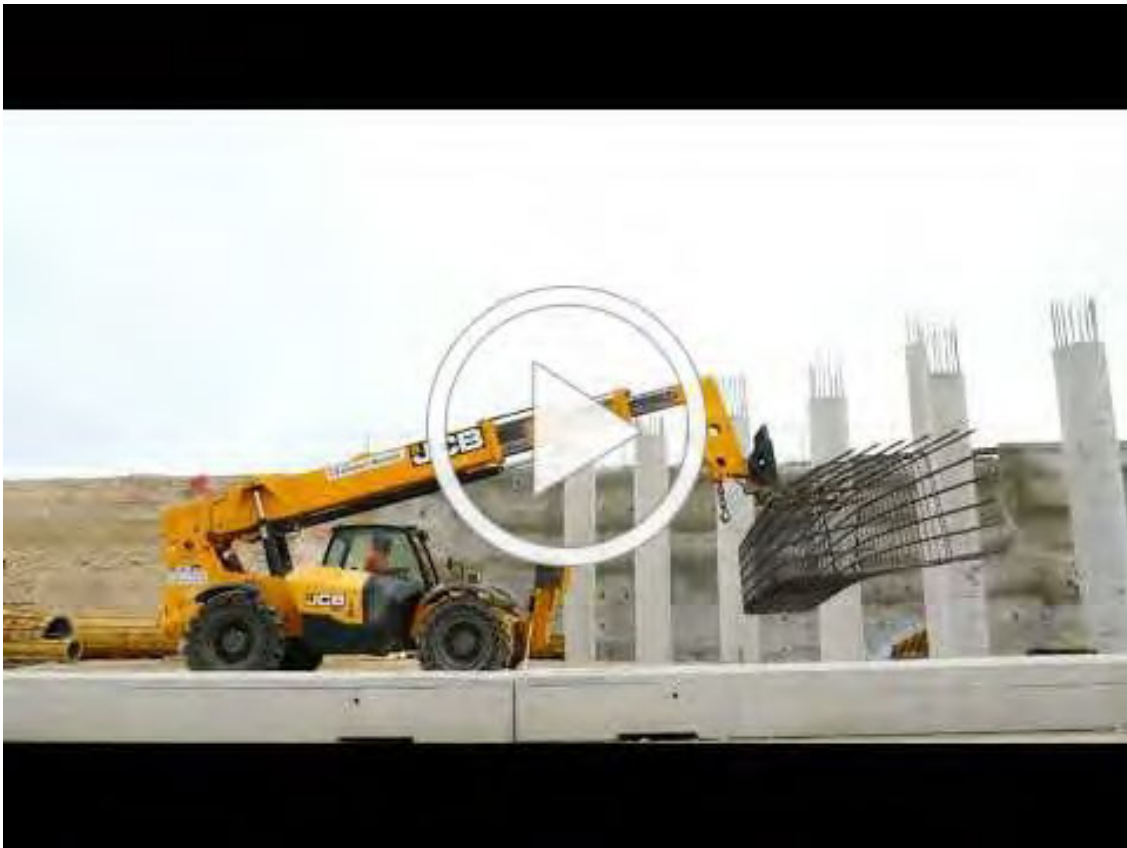
Safety Message



Wednesday, April 19, was "National Go Orange Day," a day to remind the traveling public that work zone safety is more than just the safety of the workers, it is also for the traveling public. In 2022, 205 people lost their lives and 788 were seriously injured in Texas work zones. TxDOT's "Be Safe. Drive Smart." campaign has five tips for driving safely in work zones:

1. **Slow down.** Follow the posted speed limit and proactively adjust your driving to match road conditions. Excessive speed is one of the leading causes of work zone crashes.
2. **Pay attention.** Avoid distractions, keep your mind on the road and put your phone away.
3. **Watch out for road crews.** Roadside workers want to get home safely, too. Always follow instructions and be mindful of construction area road signs.
4. **Don't tailgate.** Give yourself room to stop in a hurry, should traffic stop suddenly. Rear-end collisions are the most common type of work zone crashes.
5. **Allow extra time.** Road construction can slow things down. Count on it, and plan for it.

Construction Update



Work continues to progress on the I-35 NEX Central project in the area of Loop 1604 between Nacogdoches Road and Lookout Road. Crews continue to set drilled shaft cages, remove formwork extensions and pour concrete. The drilled shafts will carry columns up to 23 feet in height. Check out the latest video above to see all the work that is happening in this area.

Road Closure Alert

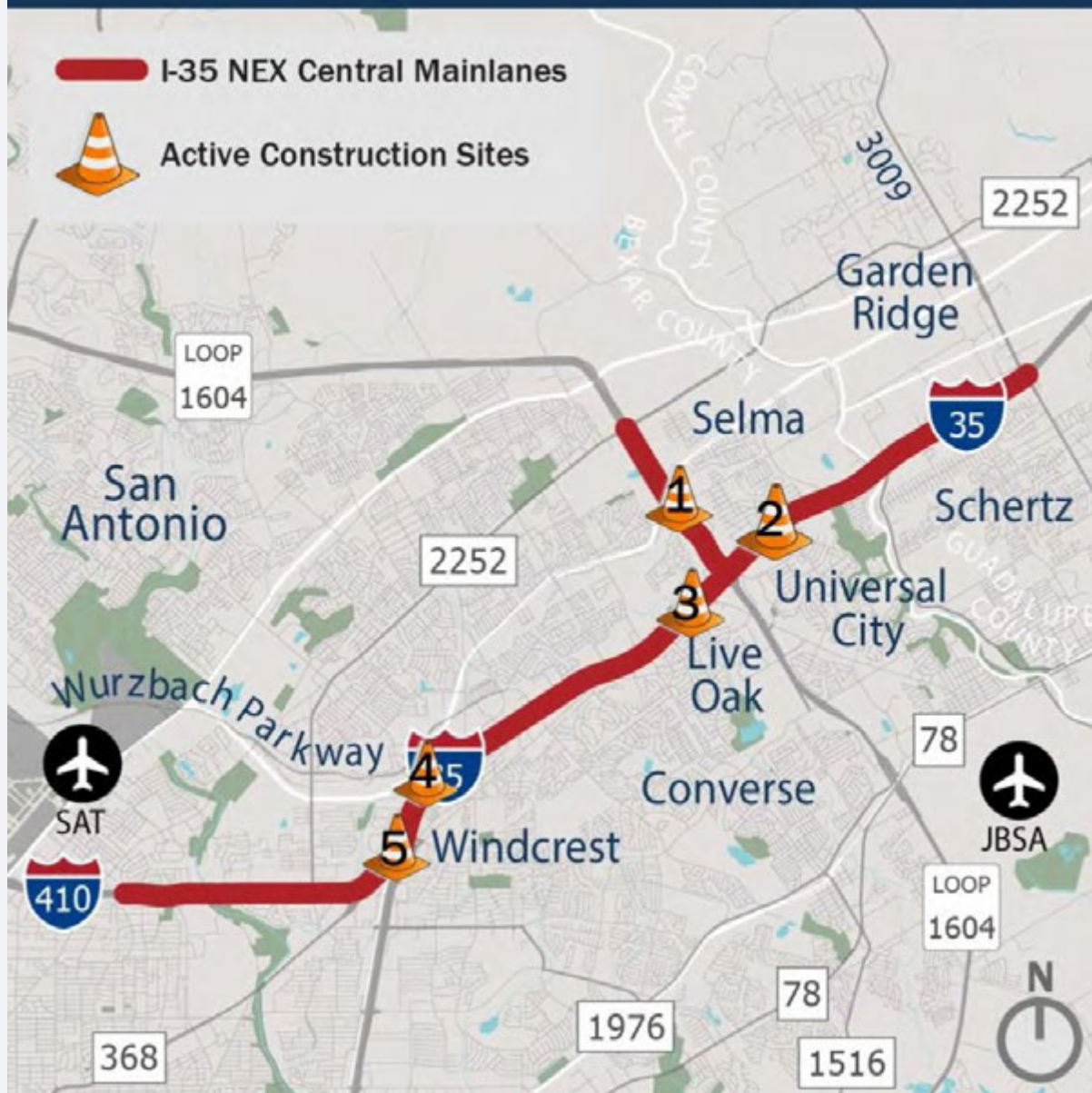


A full nightly closure on southbound frontage road of I-35 from Old Austin Road to Forum Parkway will occur at the end of May/early June from 9 p.m. to 5 a.m. for approximately three non- consecutive nights. This closure is needed for crews to hoist bent caps. The bent cap is the base that is placed on top of the column to provide support for the future elevated mainlanes. These bent caps are around 6 feet wide, 60 feet long and 10.5 feet high. All construction activities and schedules are subject to change.

Active Construction Sites

The map below highlights where active construction is currently taking place on I-35 NEX Central, indicated by the traffic cones. The active construction sites shown on the map below are intended to indicate major construction operations. You can view project information and lane closures at www.i35nex.com. Please note construction preparation work, including placement of barriers, is also ongoing within the limits of the project.

ACTIVE CONSTRUCTION SITES MAP

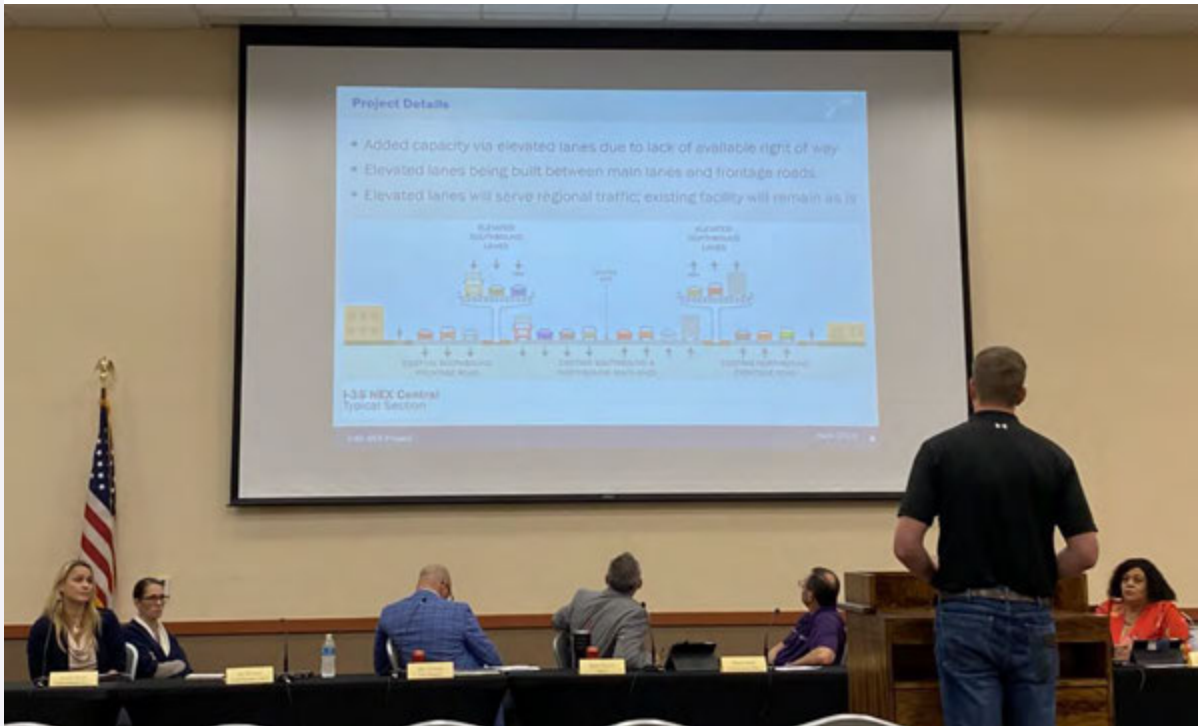


The construction cones on the map indicate where active construction is taking place now through May 2023.

1. Drilled shafts and column foundations work continues in the area of Nacogdoches Road to Lookout Road.
2. Drilled shaft and bridge foundation work continues, and bent cap installation begins near Forum Parkway.
3. Bent cap installations, bridge foundations, column work, soil nail walls, and temporary road widening continues from Judson Road to I-35 Access Road. Drilled shaft work has started on the northbound frontage road of I-35 from I-35 Access Road Toepperwein Road.
4. Long-term alternating lane closure on southbound frontage road of I-35 between Thousand Oaks Drive and Whirlwind Drive for roadway reconstruction.

5. Long-term closure and temporary ramp construction near Randolph Boulevard.

In the Community



On Tuesday, April 11, 2023, TxDOT and Alamo NEX Construction gave a I-35 NEX project and a construction update for the I-35 NEX Central project to the City of Schertz during the city council meeting.

Interested in learning more about the I-35 NEX Central project? Request a presentation so that our team can keep you informed about progress being made. A short presentation that focuses on the I-35 NEX Central project can be given. Information discussed would include project timeline, design and impact as well as a question-and-answer session. If you are part of a local community organization and would like to request a presentation, please contact us at i35nexcentral@txdot.gov.

Contact Us

Questions or Comments

I-35 NEX Central Project
(726) 800-4809
i35nexcentral@txdot.gov

Public Information Office
7330 San Pedro Ave
Suite 600
San Antonio, TX 78216

Social Media

Twitter: [@i35nexcentral](https://twitter.com/i35nexcentral)
Facebook: [@i35nexcentral](https://www.facebook.com/i35nexcentral)

E-alert

Sign up for weekly lane closure notices and newsletters by emailing us at i35nexcentral@txdot.gov.

Project Information

www.i35nex.com

Scan here to access our website.



Don't miss an update! Please add i35nexcentral@txdot.gov to your address book.
Copyright (C) 2023 Texas Department of Transportation. All rights reserved.

I-35 NEX Central Public Information Office | 7330 San Pedro Ave, Suite 600, San Antonio, TX 78216

Unsubscribe_groufs-c@txdot.gov

[Constant Contact Data Notice](#)

Sent by i35nexcentral@txdot.gov powered by

