

LAREDO REGION

Texas Border Facts
March 2025



The Laredo Region is home to three Land Ports of Entry (LPOE): Del Rio, Eagle Pass and Laredo. More than six of every ten commercial trucks crossing the Texas-Mexico border in 2024 crossed in the Laredo region.

Del Rio Port of Entry

The Del Rio Port of Entry comprises a border crossing dedicated exclusively to passenger vehicles — the Lake Amistad Dam Crossing — as well as the Del Rio International Airport.

Additionally, the Del Rio International Bridge accommodates pedestrians, passenger vehicles, buses, and commercial vehicles.

Eagle Pass Port of Entry

The Eagle Pass POE comprises the Eagle Pass International Bridge, which accommodates pedestrians and passenger vehicles, along with a railroad crossing—the Eagle Pass Rail Bridge—that handles rail freight.

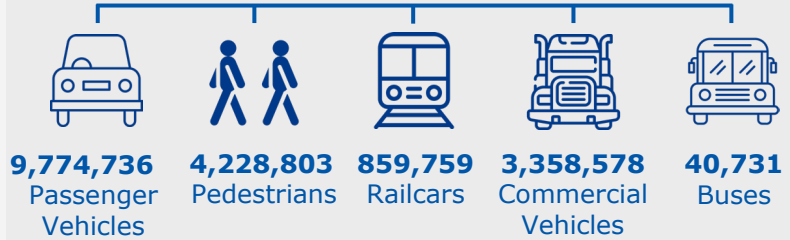
Additionally, the Camino Real International Bridge serves pedestrians, passenger and commercial vehicles, and buses.

Laredo Port of Entry

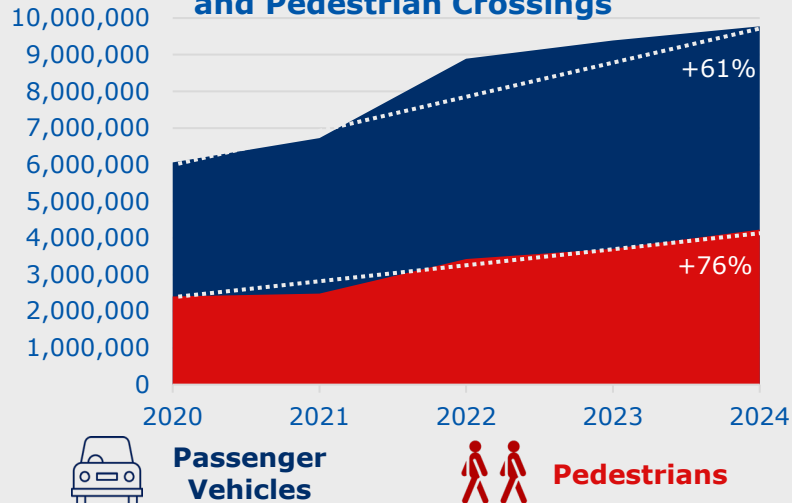
The Laredo POE comprises multiple key crossings in terms of trade value. The World Trade Bridge is exclusively dedicated to commercial vehicles, while the Colombia Solidarity Bridge accommodates pedestrians, buses, and both passenger and commercial vehicles. The Gateway to the Americas Bridge handles pedestrian and passenger vehicle traffic, whereas the Juárez-Lincoln International Bridge serves passenger vehicles and buses.

Additionally, the CPKC Laredo International Rail Bridge and the Laredo International Airport handle commercial freight.

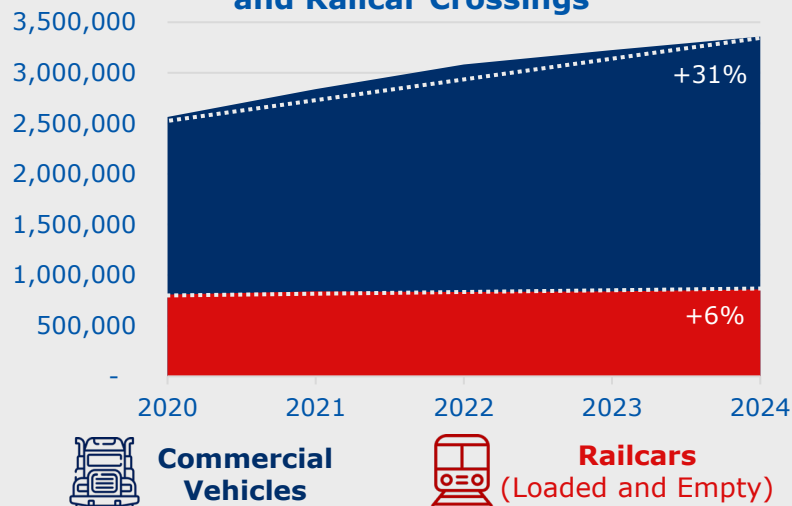
Northbound 2024 Crossings



Trend in Northbound Passenger Vehicle and Pedestrian Crossings



Trend in Northbound Commercial Vehicle and Railcar Crossings





In 2024, the U.S. traded \$839.9 billion in goods with Mexico, with exports totaling \$334.0 billion and imports reaching \$505.9 billion.



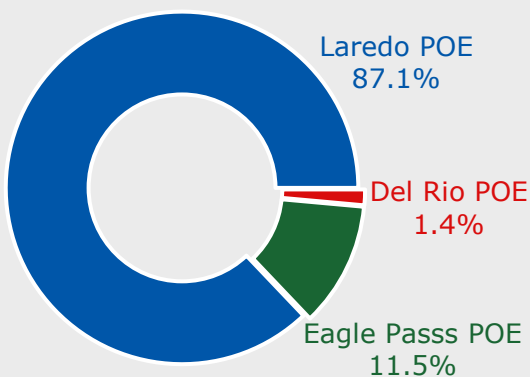
More than 70 percent (\$588.7 billion) was processed through Texas.



Laredo Region 2024 Trade Insights

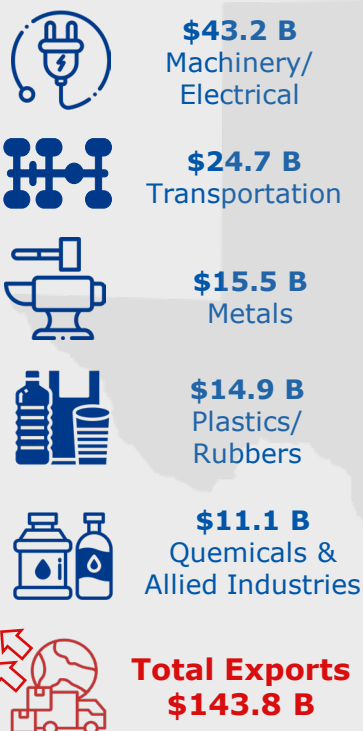
The **Laredo Region** traded \$380.3 billion, almost a 64.6 percent of the total processed through Texas.

In 2024, the POEs in the Laredo Region processed \$143.8 billion in exports and facilitated a total of \$236.5 billion in imports.

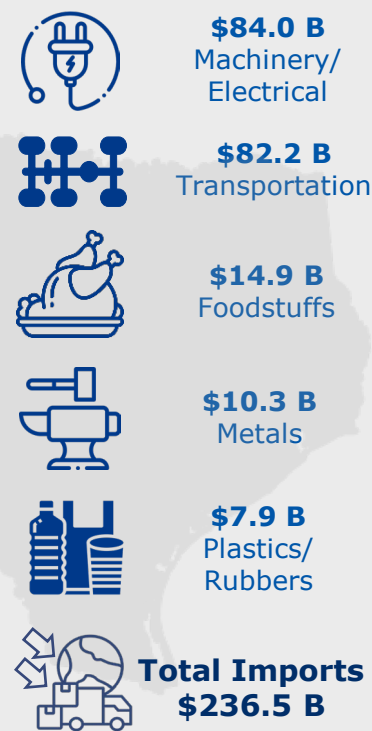


The Del Rio POE processed \$5.5 billion in U.S.-Mexico trade, while the Eagle Pass POE handled \$43.6 billion. Meanwhile, the Laredo POE processed \$331.2 billion, accounting for 87.1 percent of the total trade processed within the region and 56.3 percent of the total trade in the state of Texas.

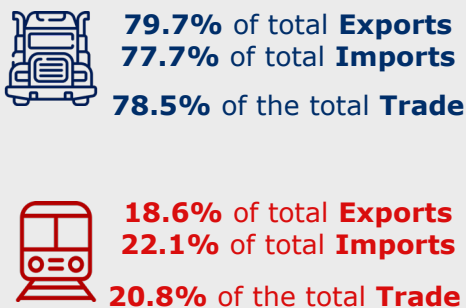
2024 Top 5 EXPORTS



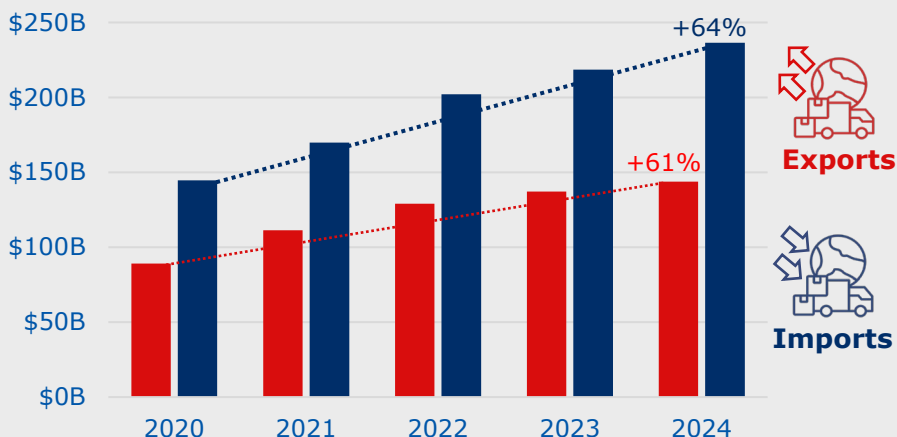
2024 Top 5 IMPORTS



2024 Cross-Border Regional Trade Analysis by Transportation Mode



Trend in the Value of U.S.-Mexico Trade Processed in the Laredo Region



All information regarding POEs can be found in the [Texas Mexico International Border Crossing Guide 2024](#).

Sources: Bureau of Transportation Statistics – [TransBorder Freight Data](#) and [Border Crossing Data](#) Portals.

