



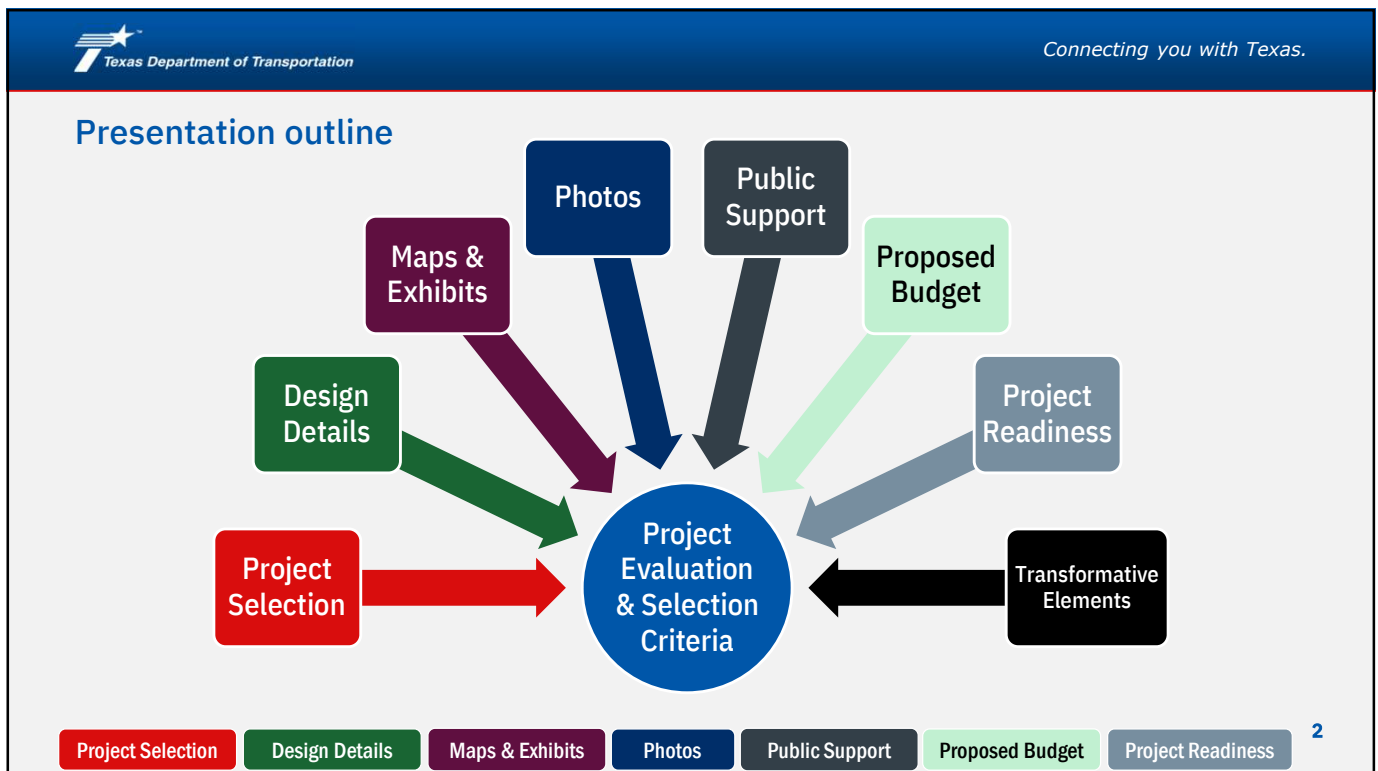
TxDOT 2025 Transportation Alternatives Program

Best Practices for Detailed Applications

2025 Workshop



1



2

TxDOT's TA Program Focus Areas

Project sponsors are strongly encouraged to submit projects that:

- Integrate and improve access to **public transportation** by investing in bicycling, wheelchair, and walking access. Specifically, projects that integrate **multiple modes of transportation** such as transit stops, carsharing, bikesharing, micromobility, or other shared-mobility services.
- Improve safety, access, or mobility for people of **all ages and abilities** engaged in active transportation, especially on-system improvements (within TxDOT right-of-way) in support of TxDOT's **Americans with Disabilities Act (ADA) Transition Plan**, TxDOT's Pedestrian Safety Action Plan, and other bicycle or pedestrian safety initiatives.
- Enhance bicycle and pedestrian access and safety to **school-related destinations enabling and encouraging** children, including those with disabilities, to walk and bicycle to school activities.
- Construct segments identified as part of **Texas Bicycle Tourism Trails** network or implement a locally-preferred alternate route.

Project Selection

Design Details

Maps & Exhibits

Photos

Public Support

Proposed Budget

Project Readiness

3

3

TxDOT 2025 TA Call-for-Projects: Criteria Category Weights

Criteria Category	Criteria Category Weights			
	Community Based	Large Scale*	Network Enhancements	Non-Infrastructure
Safety	25%	25%	20%	30%
Connectivity & Accessibility	25%	25%	20%	30%
Project Readiness	25%	25%	35%	-
Geographic Balance	15%	15%	15%	20%
Community Support & Planning	10%	10%	10%	20%
Total	100%	100%	100%	100%

*Additional points will be added to Large Scale based on Transformative Elements.

Project Selection

Design Details

Maps & Exhibits

Photos


Public Support

Proposed Budget

Project Readiness

4

4



Project Selection: Criteria Evaluation Categories


TxDOT completes analysis based on project location

TxDOT applies criteria based upon application responses

Criteria Category	Criteria Measures
Safety	Non-motorized crash count
	Non-motorized crash rate
	Documented safety hazards and/or PSAP segments
	Professional judgement of countermeasure appropriateness
Connectivity & Accessibility	Connects to bike, ped, and/or transit infrastructure
	Connects to active transportation destinations
	Eliminates barriers
	Along long-distance bike route
	Population density
	Employer density
Project Readiness	Professional judgement rating of project constructability/ feasibility
	Professional judgement rating of shovel readiness
Geographic Balance	Average percent zero car household
	Average percent unemployed
	Average percent disabled
	Average percent elderly
	Population size (Large Scale only)
	TxDOT District underrepresented in 2023 TxDOT TA awards
Community Support and Planning	Professional judgement of supporting documentation of community support
	Professional judgement of alignment with local planning documents (if provided)

Project Selection
Design Details
Maps & Exhibits
Photos
Public Support
Proposed Budget
Project Readiness

5

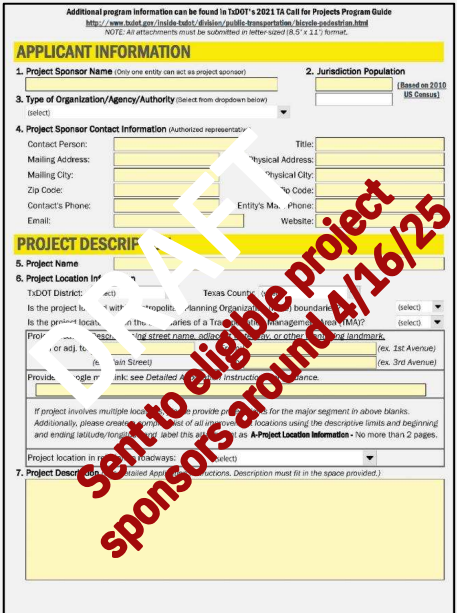


Detailed Application

- Detailed Application is where the project sponsor provides details of the project
- TxDOT will use supporting documentation provided in the detailed application to validate information in the detailed application
- It is important to communicate project details clearly in the detailed application and attachments

Required attachments and questions for Detailed Applications will vary by Project Category. Detailed Application Instructions will clarify.

Connecting you with Texas.



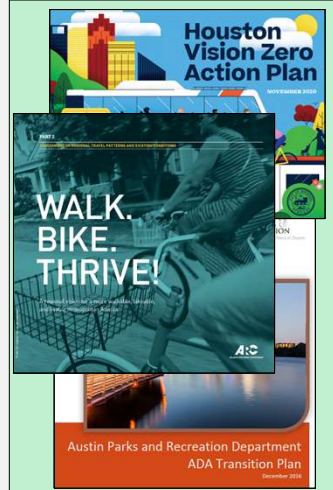
Project Selection
Design Details
Maps & Exhibits
Photos
Public Support
Proposed Budget
Project Readiness

6

Project Categories: Detailed Application Requirements


Community Based

Large Scale

Network Enhancements

Non-infrastructure
Project Selection

Design Details

Maps & Exhibits

Photos

Public Support

Proposed Budget

Project Readiness

7

7

Project Categories: Detailed Application Requirements


Community Based

Large Scale

Network Enhancements

Non-infrastructure
Project Selection

Design Details

Maps & Exhibits

Photos

Public Support

Proposed Budget

Project Readiness

8

8

 Connecting you with Texas.

Project Categories: Detailed Application Requirements



Community Based



Large Scale
Requires an additional
Transformative Elements narrative



Network Enhancements




Non-infrastructure


Project Selection Design Details Maps & Exhibits Photos Public Support Proposed Budget Project Readiness

9


9

 Connecting you with Texas.


Project Categories: Detailed Application Requirements




Community Based



Large Scale



Network Enhancements



Non-infrastructure

Project Selection Design Details Maps & Exhibits Photos Public Support Proposed Budget Project Readiness

10

10

Design Details

What do design details convey?

- A comprehensive picture of the project
- How the project meets current standards (see [TxDOT Roadway Design Manual 2024 update](#))
- Constructability and durability
- Safety, accessibility, and project readiness criteria

How does the project sponsor address design details?

- Project Description (3-4 sentence project description)
- Project Details (drop-downs & fill-ins about project design)
- Project typical section, layout, location map (attachments)
- Itemized Construction Cost Estimate – discussed later

Project Selection

Design Details

Maps & Exhibits

Photos

Public Support

Proposed Budget

Project Readiness

11

11

Design Details: Detailed Application Questions

OLD DETAILED APPLICATION

[Description](#) | [Details](#) | [Safety](#) | [Connectivity & Accessibility](#) | [Community Support & Planning](#) | [Complexity](#) | [Project Timeline](#)

SAFETY

16. Identified bicycle and/or pedestrian safety hazards and countermeasures

Check all of the safety hazards located within the project limits. Next to each checked safety hazard, state the proposed countermeasure(s) address. Provide additional information about proposed countermeasures and photos of safety hazards as an attachment: [Attachment C](#).

Clearly identify these features on: [Map 1-Safety](#) include in: [Attachment C](#).

Safety Hazards and Countermeasures	
<input type="checkbox"/> High roadway speed (45 mph or greater)	
<input type="checkbox"/> Hazardous intersection/conflict point	
<input type="checkbox"/> Uncontrolled intersection/crossing	
<input type="checkbox"/> Lack of bike/ped infrastructure	
<input type="checkbox"/> High motor vehicle traffic volume	
<input type="checkbox"/> On-street parking	
<input type="checkbox"/> Wide roadway crossing (4 or more lanes)	
<input type="checkbox"/> Lack of lighting	
<input type="checkbox"/> Other	

17. Bicycle and/or pedestrian infrastructure elements

Which of the following features are part of the proposed project? Check all that apply.

Clearly identify these features on: [Map 1-Safety](#).

<input type="checkbox"/> closes a gap in bicycle or pedestrian network	<input type="checkbox"/> features traffic markings/signage	<input type="checkbox"/> new bicycle &/or pedestrian infrastructure
<input type="checkbox"/> features new traffic signalization*	<input type="checkbox"/> improves railroad/highway/water crossing	<input type="checkbox"/> includes a vertical separation element (e.g., curb, flexible delineator, bollard)
<input type="checkbox"/> features traffic calming elements	<input type="checkbox"/> facility is offset from road (>5')	<input type="checkbox"/> Provides facilities for bicyclists separate from facilities for pedestrians
<input type="checkbox"/> features safety lighting		

*Documentation of signal warrants M Attachment C.

Final version of Detailed Application will be sent to eligible project sponsors on or around 4/16/25

Project Selection

Design Details

Maps & Exhibits

Photos

Public Support

Proposed Budget

Project Readiness

12

12

Design Details: Project Description

3-4 sentence written description, which includes:

- Facility type (e.g., shared use path)
- Project location (e.g., along FM 345)
- Limits (e.g., from Main Street to Birch Street)
- Width (e.g., 12-foot-wide)
- Major construction items (e.g., pedestrian bridge) or elements that affect motor vehicle traffic patterns (e.g., new medians, new signals, traffic calming elements, road diets, etc.)

Written project descriptions must “fit” in space provided. Ensure all words are visible.

Project Selection

Design Details

Maps & Exhibits

Photos

Public Support

Proposed Budget

Project Readiness

13

13

Design Details: Sample project descriptions

“The project would construct a **12-foot-wide shared use path** along Brushy Creek from the Sunshine Apartments (public housing) to Comstock Elementary School. The project would include a pedestrian hybrid beacon, ADA-curb ramps, crosswalks, and signage at both termini, as well as a 60-foot-long, 14-foot-wide **bicycle/pedestrian bridge** over Brushy Creek.”

“The proposed project would construct **new 6-foot-wide** ADA-compliant **sidewalks** on both sides of Garner St from Tunica St to James St (1 mile), including **replacing** damaged, non-compliant sidewalks on the north side of Garner St between John St and James St (0.3 mile of total project length). The project includes **curb extensions** at Tunica, John, and James Streets and a raised **median** with pedestrian refuge at John St.”

Project Selection

Design Details

Maps & Exhibits

Photos

Public Support

Proposed Budget

Project Readiness

14

14

Design Details: Project Location Information and Project Details

Project Information

- Project Dimensions
 - Total length
 - Facility width
 - Material depth
- Project Location
 - Google map link
 - Written description
 - Latitude/Longitude

Project Details

- 30% or more plans for review (if available)
- Primary (and Secondary) Facility type
- Surface type/material
- Lighting included?
- Bridge details
 - Construction
 - Number
 - Length
 - Width
 - Superstructure material

Project Selection

Design Details

Maps & Exhibits

Photos

Public Support

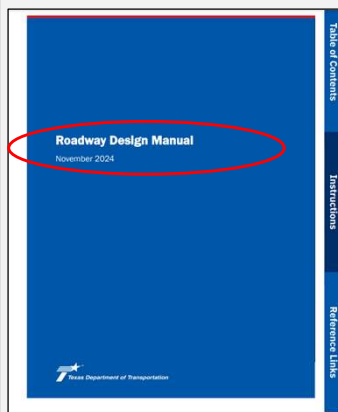
Proposed Budget

Project Readiness

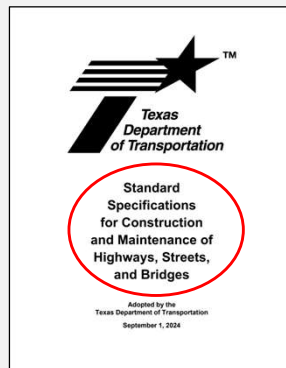
15

15

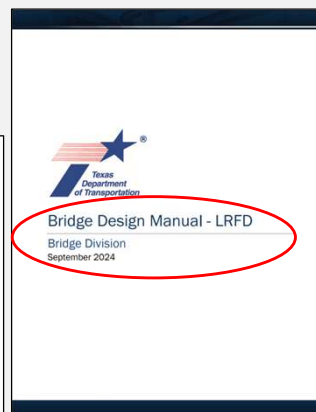
Design Details: Designs must comply with TxDOT manuals and specifications



(2024)



(2024)



(2024)

All manuals are
web hyperlinks.



Project Selection

Design Details

Maps & Exhibits

Photos

Public Support

Proposed Budget

Project Readiness

16

16

Design Details: Roadway Design Manual – November 2024 Update

- Significant changes to pedestrian and bicycle infrastructure planning and design guidance



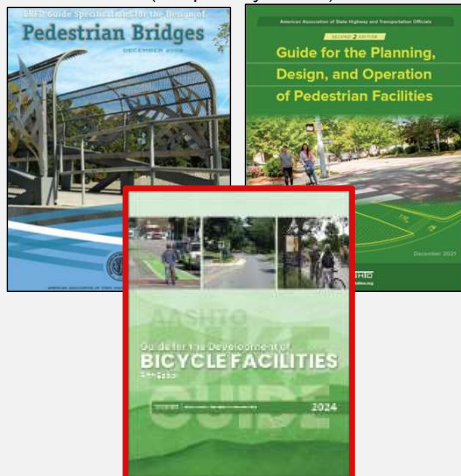
Project Selection Design Details Maps & Exhibits Photos Public Support Proposed Budget Project Readiness

17

17

Design Details: Nationally recognized design guides

AASHTO
(adopted by TxDOT)



NACTO
(optional)



All manuals are web hyperlinks.

Project Selection Design Details Maps & Exhibits Photos Public Support Proposed Budget Project Readiness

18

18

Design Details: FHWA bikeway design guidance



All manuals are web hyperlinks.

Project Selection Design Details Maps & Exhibits Photos Public Support Proposed Budget Project Readiness

19

19

Design Details: Americans with Disabilities Act (ADA)



36 CFR Part 1190 - Public Right-of-Way Accessibility Guidelines (PROWAG) for Pedestrian Facilities

"The proposed guidelines apply to pedestrian facilities in the public right-of-way. The proposed guidelines define the public right-of-way to mean "public land or property, usually in interconnected corridors, that is acquired for or dedicated to transportation purposes"...."

- Sidewalks
- Shared use paths
- Pedestrian crossings
- Pedestrian signals

<https://www.access-board.gov/prowag/>

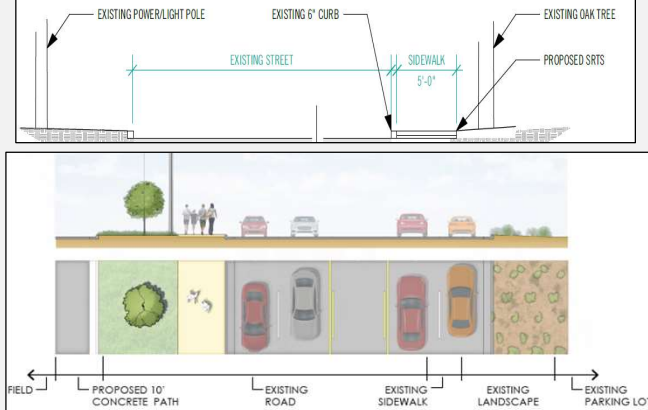
Project Selection Design Details Maps & Exhibits Photos Public Support Proposed Budget Project Readiness

20

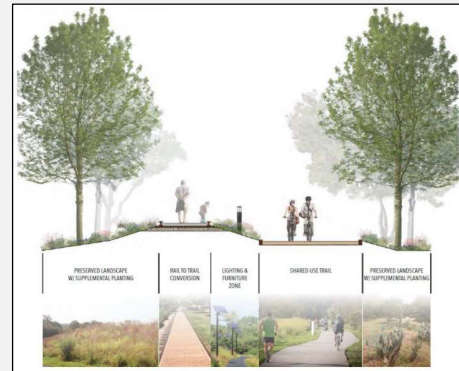
20

Design Details: Typical sections (DA attachments)

CURBED STREETS: Typical new sidewalk conditions adjacent to existing curbed streets



- Demonstrate compliance with standards
- Show how the project fits into existing footprint as well as the built and natural environments



Project Selection

Design Details

Maps & Exhibits

Photos

Public Support

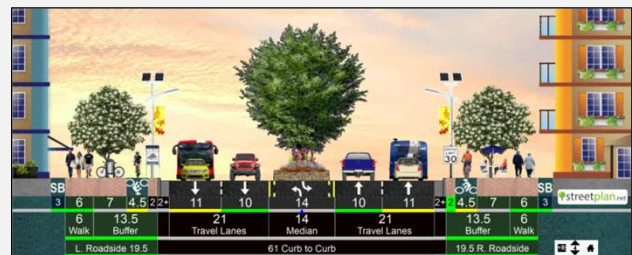
Proposed Budget

Project Readiness

21

21

Design Details: Typical sections (attachments)



Free online tools:
streetmix.net
streetplan.net

Project Selection

Design Details

Maps & Exhibits

Photos

Public Support

Proposed Budget

Project Readiness

22

22

Maps & Exhibits

What do maps convey?

Need and purpose

Context

Connectivity

Accessibility

Safety countermeasures

Communities/areas served

What should be included?

Project limits and location (all maps)

Schools, transit, major destinations (Map 2- Connectivity)

Important community landmarks and features (Map 2- Connectivity)

Identified safety hazards (Map 1- Safety)

Proposed countermeasures (Map 1- Safety)

Elements of project complexity (ROW, Utilities, RR x-ing, etc.) (Project location map)

Existing and/or planned pedestrian/bicycle routes (Map 2- Connectivity)

Project Selection

Design Details

Maps & Exhibits

Photos

Public Support

Proposed Budget

Project Readiness

23

23

Maps & Exhibits: Project location map - REQUIRED

Identifies:

- Street names
- Clearly labeled project type
- Callout with facility details
- Major landmarks or destinations to orient reviewer



Project Selection

Design Details

Maps & Exhibits

Photos

Public Support

Proposed Budget

Project Readiness

24

24

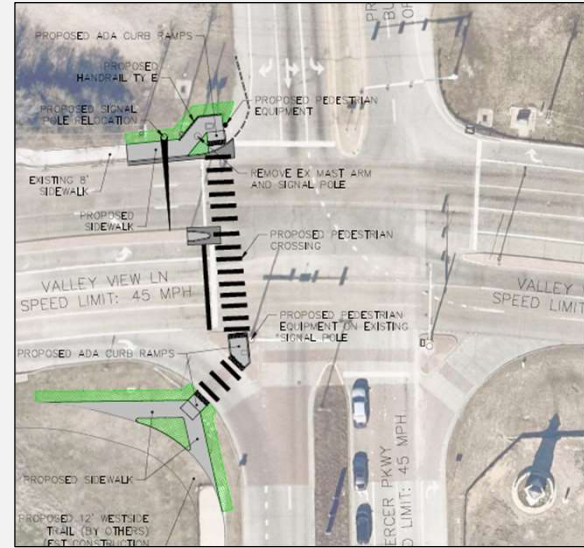
Maps & Exhibits: Project layout - REQUIRED

Identifies:

- Bicycle and pedestrian accommodations
- Safety countermeasures
- Interactions between auto and non-motorized traffic
- Transit connections
- Preserved landscape features

Includes:

- Scale
- Context
- Street names



Project Selection

Design Details

Maps & Exhibits

Photos

Public Support

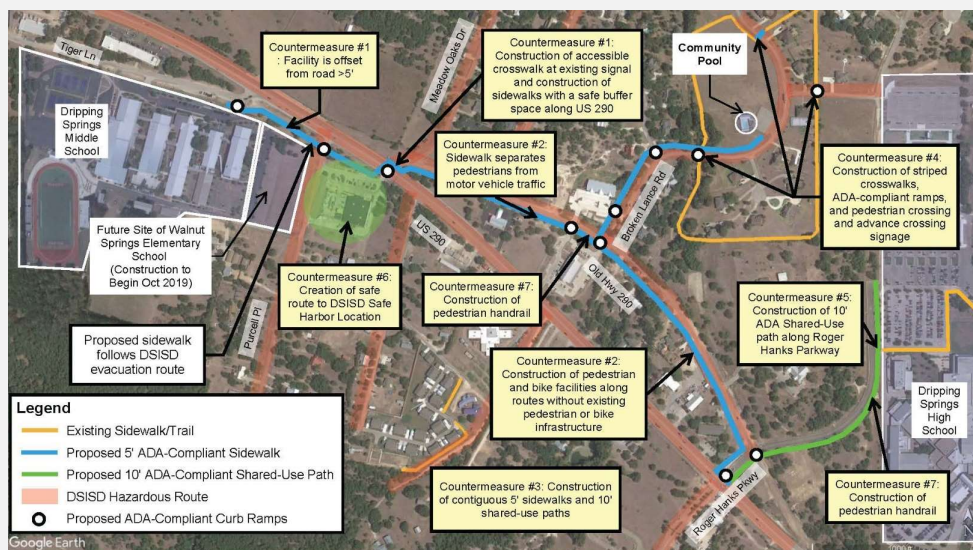
Proposed Budget

Project Readiness

25

25

Maps & Exhibits: Safety Hazard Countermeasures Map - REQUIRED



Identify:

- Project improvements in relation to hazards
- Gaps filled or safety concerns mitigated by project improvements

Project Selection

Design Details

Maps & Exhibits

Photos

Public Support

Proposed Budget

Project Readiness

26

26

Maps & Exhibits: Potential Safety Hazards

Be sure to feature the safety hazards to be mitigated by proposed project on your

Map 1- Safety:

- High roadway speeds (45 mph or greater)
- [Featured on PSAP Pedestrian Safety Screening Tool](#)
- Hazardous intersection/conflict point
- Uncontrolled intersection/crossing
- Lack of bike/ped infrastructure
- High motor vehicle traffic volume
- On-street parking
- Wide roadway crossing (3 or more lanes)
- Lack of lighting
- Other

Description | Details | **CMST** | Connectivity & Accessibility | Community Support & Planning | Complexity | Project Timeline

SAFETY

16. Identified bicycle and/or pedestrian safety hazards and countermeasures
Check all of the safety hazards located within the project limits. Next to each checked safety hazard, state the proposed countermeasure(s) address. Provide additional information about proposed countermeasures and photos of safety hazards as an attachment: [Attachment C](#). Clearly identify these features on [Map 1-Safety](#) include in [Attachment C](#).

Safety Hazards and Countermeasures	
<input type="checkbox"/> High roadway speed (45 mph or greater)	
<input type="checkbox"/> Hazardous intersection/conflict point	
<input type="checkbox"/> Uncontrolled intersection/crossing	
<input type="checkbox"/> Lack of bike/ped infrastructure	
<input type="checkbox"/> High motor vehicle traffic volume	
<input type="checkbox"/> On-street parking	
<input type="checkbox"/> Wide roadway crossing (4 or more lanes)	
<input type="checkbox"/> Lack of lighting	
<input type="checkbox"/> Other	

17. Bicycle and/or pedestrian infrastructure elements
Which of the following features are part of the project? Check all that apply. Clearly identify these features on: [Map 1-Safety](#).

<input type="checkbox"/> closes a gap in bicycle or pedestrian network	<input type="checkbox"/> features traffic markings/signage	<input type="checkbox"/> new bicycle &/or pedestrian infrastructure
<input type="checkbox"/> features new traffic signalization*	<input type="checkbox"/> improves railroad/highway/water crossing	<input type="checkbox"/> includes a vertical separation element (e.g. curb, flexible delineator, bollard)
<input type="checkbox"/> features traffic calming elements	<input type="checkbox"/> facility is offset from road (>5')	<input type="checkbox"/> Documentation of signal warrants (if applicable)
<input type="checkbox"/> features safety lighting	<input type="checkbox"/> Provides facilities for bicyclists separate from facilities for pedestrians	

Project Selection

Design Details

Maps & Exhibits

Photos

Public Support

Proposed Budget

Project Readiness

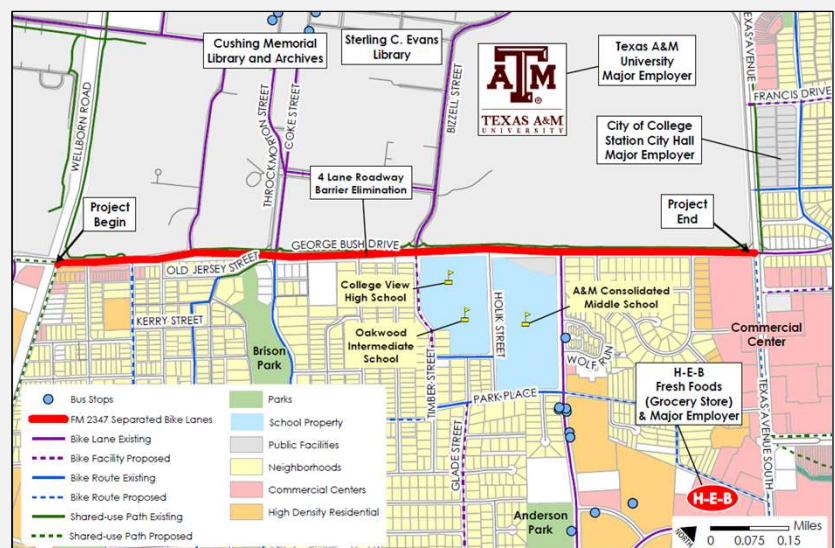
27

27

Maps & Exhibits: Connectivity map (REQUIRED)

Connectivity Map(s) can:

- Identify project improvements in relation to destinations, community amenities, and other related projects.
- Show connections to bike/ped infrastructure, transit, commerce, residential areas, schools, etc.



Project Selection

Design Details

Maps & Exhibits

Photos

Public Support

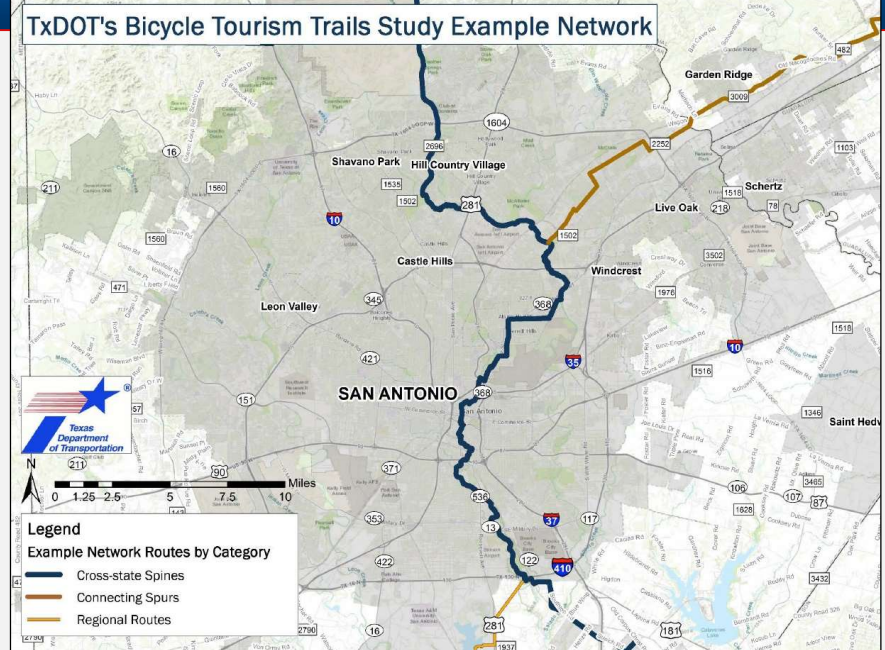
Proposed Budget

Project Readiness

28

28

Maps & Exhibits: Project is on Texas Bicycle Tourism Trails Example Network



Project Selection

Design Details

Maps & Exhibits

Photos

Public Support

Proposed Budget

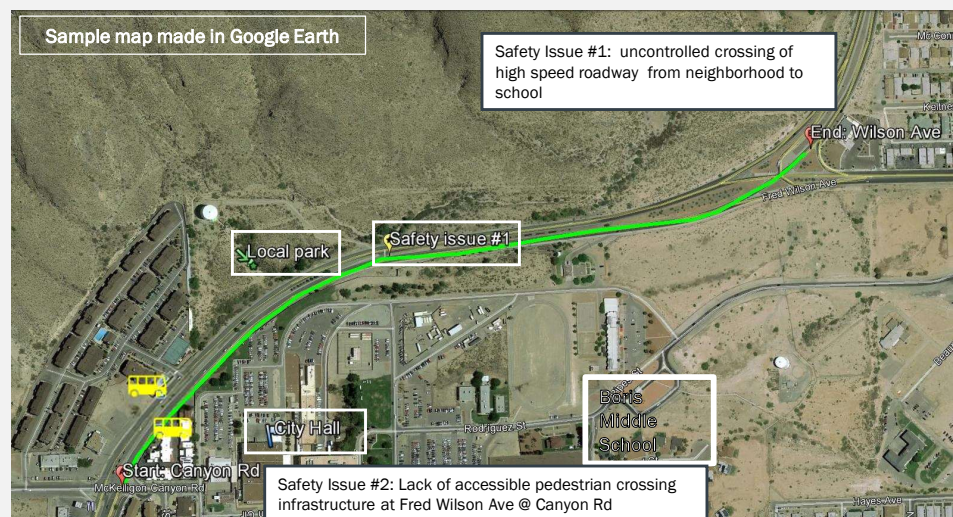
Project Readiness

29

29

Maps & Exhibits: Maps can be made easily!

- Google Earth, Google maps, Powerpoint, and other FREE online map creation software



Project Selection

Design Details

Maps & Exhibits

Photos

Public Support

Proposed Budget

Project Readiness

30

30

Photographs

What do photographs convey?

Context, including built and natural environment

Existing conditions

Need for project

Safety hazards

Accessibility issues

Connectivity

Environmental considerations

Project Selection

Design Details

Maps & Exhibits

Photos

Public Support

Proposed Budget

Project Readiness

31

31

Photographs provide context

- Historic districts
- Environmental features
- Separated vs on-street pathways
- Repurposed bridges
- Proposed infrastructure location in context

Drainage culvert along
SH 150 facing south
(5/14/23)



Adjacent historic
buildings along SH
29 facing west
(7/19/16)



Intersection of West Magnolia and 288B
Non compliant slopes on the existing sidewalk, support poles in
sidewalk, steep drop off side of pole.

Project Selection

Design Details

Maps & Exhibits

Photos

Public Support

Proposed Budget

Project Readiness

32

32

Photographs demonstrate existing conditions

1. Poor conditions
2. Absent facilities
3. Worn paths



Project Selection

Design Details

Maps & Exhibits

Photos

Public Support

Proposed Budget

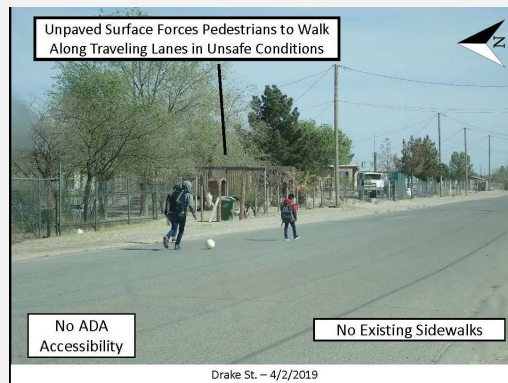
Project Readiness

33

33

Photographs identify locations of unsafe conditions

- Kids walking in streets
- Unsignalized crossings



Project Selection

Design Details

Maps & Exhibits

Photos

Public Support

Proposed Budget

Project Readiness

34

34

Photographs show connectivity to existing infrastructure

- Connections to existing infrastructure
- Fills gaps in the sidewalk or bikeway network



Project will connect to existing and previously funded SUP

Project Selection

Design Details

Maps & Exhibits

Photos

Public Support

Proposed Budget

Project Readiness

35

35

Photography: Labeling Best Practices

- Group well-labeled photographs together for attachments (i.e., using Word, PowerPoint, or Publisher).
- Photograph labels should identify: location, direction of photograph, date taken, and items of note.
- Please compress or reduce photo file size.



Project Selection

Design Details

Maps & Exhibits

Photos

Public Support

Proposed Budget

Project Readiness

36

36

Public and stakeholder support

What does public/stakeholder support convey?

- Community awareness and interest in the project
- Partnerships and coordination
- Transparency
- Consistency with local planning

How is public and stakeholder support documented?

- Public outreach documentation
- Local bicycle, pedestrian, safe routes to school, or other transportation plan (attach relevant pages)
- Property ownership and acquisition information
- TxDOT District letter of concurrence
- Collaborative implementation
- Local match commitment (**Project Sponsor resolution**)

Project Selection

Design Details

Maps & Exhibits

Photos

Public Support

Proposed Budget

Project Readiness

37

37

Local Support: *Best Practice - Public involvement summary*

Date	Event	Outcome
12/31/2012	Public Meeting - SRTS Plan	Presented proposed Milam ISD SRTS Plan to community; general public support
2/14/2014	Open House - Milam MS Trail	Presented trail project to neighborhood; 12 citizens attended; all in support of project
3/17/2014	Website and online survey - Milam MS Trail project	50 citizens visited website and took survey; 88% supported the project

- 6/1/2014 Meeting with adjacent property owner - property owner agreed to relocate fence to accommodate project construction (letter attached)
- 7/15/2014 Presentation to Milam ISD PTA - MISD passed resolution supporting project (resolution attached)
- 7/17/2014 Presentation to Whispering Oaks Neighborhood Association (WONA) - WONA passed a resolution in support of project (resolution attached)
- 7/20/2014 Presentation to Milam City Council - ordinance supporting the project (ordinance attached)
- 7/27/2014 News article - described community presentations and local support (article attached)
- 2/14/2017 Letter from Congressman Johnson - expressed support for project (letter attached)
- 2/16/2017 Letter from Downtown Business Alliance - supports project (letter attached)
- 2/20/2017 Letter from Mr. Bob Jones - indicated a willingness to enter into negotiations for ROW acquisition (letter attached)

Project Selection

Design Details

Maps & Exhibits

Photos

Public Support

Proposed Budget

Project Readiness

38

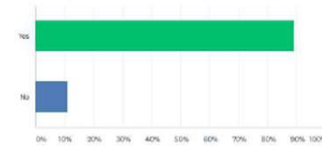
38

Community awareness and support are essential to project success

Public Outreach Log		
Dates	Group	Action Taken
4/20/2021	Transportation Committee	Presented project layouts - continued discussions
04/20/21 - 06/04/21	Stakeholder Outreach	Presented project layout to local business owners - received support signatures
5/3/2021	Parks and Recreation Commission	Presented project layouts - received support resolution
5/5/2021	Stakeholder Outreach	Presented project layouts - Meeting with TxDOT Area office
5/13/2021	Stakeholder Outreach	Coordination with TxDOT District office for project support
5/13/2021	Stakeholder Outreach	Coordination with CAMPO for project support
5/13/2021	Stakeholder Outreach	Coordination with CAPCOG for project support
5/20/2021	Farmers Market Association	Presented project layouts - received support resolution
5/20/2021	Emergency Management Commission	Presented project layouts - received support resolution
5/25/2021	Planning and Zoning Commission	Presented project layouts - received support resolution
5/20/2021	Public Outreach	Published social media notice of Open House
5/24/2021	Transportation Committee	Presented project layouts - received support resolution
5/25/2021	City Council	Presented project layouts - received support resolution
5/26/2021	Public Outreach	Public newspaper announcement of Open House
6/4/2021	Public Outreach	Public Open House - presented project layout

Q1 Do you support the City of La Vernia's proposed initiative to develop sidewalks along the corridor of the public school system and the city park which links into existing sidewalks on FM775?

Answered: 236 Skipped: 0



ANSWER CHOICES	RESPONSES	
Yes	89.56%	210
No	11.02%	26
TOTAL		236



Project Selection

Design Details

Maps & Exhibits

Photos

Public Support

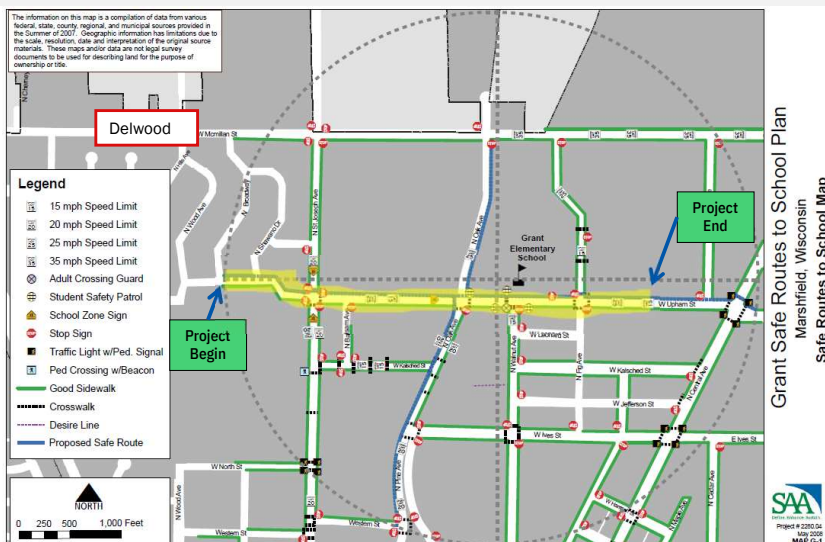
Proposed Budget

Project Readiness

39

39

Example: Project in Safe Routes to School Plan



Project Selection

Design Details

Maps & Exhibits

Photos

Public Support

Proposed Budget

Project Readiness

40

40

Example: Project identified in regional plan



Appendix C Recommended Bicycle and Pedestrian Facilities

Killeen-Temple MPO Regional Thoroughfare and Pedestrian/Bicycle Plan									
Appendix C									
Recommended Bicycle and Pedestrian Facilities									
City of Troy									
ID	Type	Action	Location	Limits	Existing Condition	In Local Plan	State Highway	Length (ft.)	Cost (\$)
156.1	Pedestrian Sidewalk, Bike Sharings	Widely existing sidewalk for ADA compliance; add bike sharings	South side of East Main St. South along Front Street	From proposed R103 improvements Eastward to Front St.	2-lane roadway	No	Yes	.1	\$1245,000
156.3	Pedestrian Sidewalk, Bike Sharings	Widely existing sidewalk for ADA compliance; add bike sharings	North side of East Main St.	From proposed R103 improvements Eastward to Front St. then crosswalk South	2-lane roadway	No	Yes	.1	\$1211,250
TOTAL									\$1466,250
* Cost estimates provided by project sponsoring entity									

Project Selection

Design Details

Maps & Exhibits

Photos

Public Support

Proposed Budget

Project Readiness

41

41

TxDOT letter of consent for projects on/along TxDOT roads

100 SOUTH LOOP DRIVE • WACO, TEXAS 76704-2858 • (254) 867-2700
November 15, 2012

Mayor Michael Morgan
City of Troy
P.O. Box 389
Troy, Texas 76579

Subject: Troy Streetscape Project

Dear Mayor Morgan:


I am writing this letter on behalf of the Texas Department of Transportation to express our enthusiastic support of the pedestrian developments proposed along Main Street (FM 935). We definitely believe that this project will serve the community as it creates a pedestrian friendly atmosphere around the historic downtown district. Travelers along our system will be invited to stop and enjoy the sites and shopping offered the revitalized downtown business district.

I also understand from reviewing your nomination that the scope of your project shall require the use of TxDOT's right-of-way. The Waco District is committed to support this project and will provide the City with adequate right of entry necessary to allow such development along our existing transportation facilities. Your efforts to address safety improvements within TxDOT's and the City's existing traffic facilities should directly impact the traveling public's overall perception of our joint system.

With your comprehensive nomination and widespread community support, I believe that your proposal will receive careful consideration by the Texas Transportation Commission.

Should you have any questions, please contact Mr. Jim Reed, Waco District TE Program Coordinator, at (254) 867-2733.

Sincerely,


Albin A. Petter, P.E.
Interim District Engineer
Waco District

cc: Ali Bashir, P.E.
Kevin Dickey, P.E.
Jim Reed

PROPERTY OWNERSHIP AND
ACQUISITION INFORMATION
ATTACHMENT D
PAGE 1

THE TEXAS PLAN
REDUCE CONGESTION • ENHANCE SAFETY • EXPAND ECONOMIC OPPORTUNITY • IMPROVE AIR QUALITY
INCREASE THE VALUE OF OUR TRANSPORTATION ASSETS

An Equal Opportunity Employer

Project Selection

Design Details

Maps & Exhibits

Photos

Public Support

Proposed Budget

Project Readiness

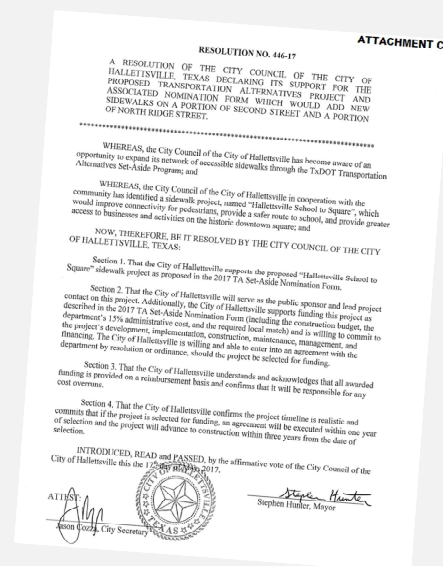
42

42

Project Sponsor Resolution

- **All** Detailed Applications **must include** a resolution from the project sponsor's governing board
 - Declaring support for the project
 - Committing to develop, implement, construct, maintain, manage, and finance the project
 - Committing to provide the local match (if any)
 - Committing to enter into an Advance Funding Agreement with TxDOT if selected for funding
- Plan Ahead!

Sample resolution available at
[TxDOT's TA website](#)



Project Selection

Design Details

Maps & Exhibits

Photos

Public Support

Proposed Budget

Project Readiness

43

43

Proposed budget

What does the itemized budget convey?

- Project scope and scale
- Prevention of potential overruns
- Supports activities described elsewhere in detailed application form
- Project readiness and local support
- Should match scope of project (safety counter measures)

Where does the project sponsor provide the itemized budget?

- Itemized Construction Cost Estimate (fill-in)
- Additional Construction-Related Costs (fill-in)

Project Selection

Design Details

Maps & Exhibits

Photos

Public Support

Proposed Budget

Project Readiness

44

44

Technical assistance tools & average low bid unit prices

- Budget guidance available on [TxDOT Bicycle and Pedestrian Funding webpage](#)
 - List of common items to consider for bicycle and pedestrian projects
 - Include average cost ranges for common bicycle and pedestrian bid items
 - Commonly missed budget items
- Initial guidance will be available for the Preliminary Application
- More detailed guidance will be available for Detailed Application phase

AVERAGE LOW BID UNIT

Last Update: Friday, January 27, 2023

ITEMS 100 6001 TO 169 6003

Item No.	Description	Unit	Price
100 6001	PREPARING ROW		
104 6009	REMOVING CONC (R)		
104 6011	REMOVING CONC (WALKS)		
104 6021	REMOVING CONC (C)		
104 6029	REMOVING CONC (C) (CURB & GUTTER)		
104 6054	REMOVING CONCRETE (SNOW STRIP)		
104 6064	REMOVING CONC (MISC)		
105 6019	REMOVING STAB BASE & ASPH PAV (14")		
106 6036	REMOVING STAB BASE R		

Construction Cost Estimate Assistance Tool

The purpose of this document is to supplement TxDOT's Construction Cost Estimating Guide (CCEG) with recommended practices for the Preliminary Application (PA) and Detailed Application (DA) phases of TxDOT's 2023 Transportation Alternatives Program (TA) Call for Projects. The CCEG is published by TxDOT's Transportation Programs Division (TPD) Project and Portfolio Management Section and is available on [tddot.gov](#) (Construction Cost Estimating Guide). The objective of this document in coordination with the CCEG is to enhance the accuracy of the preliminary construction cost estimates prepared for the 2023 TA Program Call.

Parameter-Based Estimation (Ballpark costs)

- Calculate dimensions of proposed infrastructure
- Select a dimensional cost inside the ranges shown by Project Type
- Multiply the calculated dimension by the chosen cost

Historical Bids-Based Estimation

- Base Estimate**
 - Calculate known quantities
 - Multiply by average unit cost
- Allowances**
 - Identify known items with unknown quantities
 - Apply appropriate percentage of base estimate
- Contingency**
 - Larger Risk, Larger Percentage of Total Estimate
 - Max 15% for Detailed Application

Preliminary Application (PA) Estimates
Both Estimation Methods (Parameter and Historic Bids-Based) are acceptable when preparing estimates for PAs. Contingency % is limited to 30% for PAs.

Detailed Application (DA) Estimates
Parameter Estimation is not acceptable when preparing estimates for DAs. A ballpark estimate can be used as a starting point or a check on the reasonableness of a bids-based estimate. Allowances should be refined and reduced for DAs. Contingency % is limited to 15% Max for DAs.

<https://www.txdot.gov/business/road-bridge-maintenance/contract-letting/bid-items-and-index.html>

Project Selection

Design Details

Maps & Exhibits

Photos

Public Support

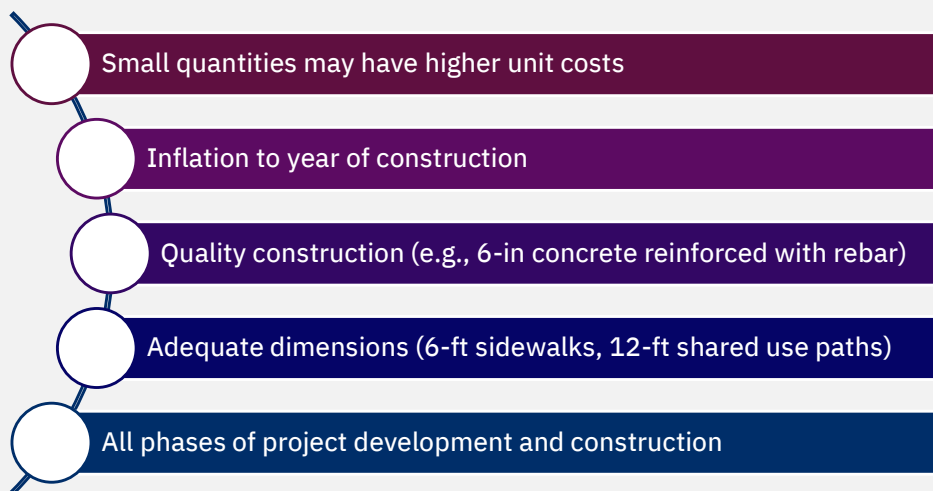
Proposed Budget

Project Readiness

45

45

A detailed budget will help control costs



Project Selection

Design Details

Maps & Exhibits

Photos

Public Support

Proposed Budget

Project Readiness

46

46

Budget items to remember

Mobilization

Site preparation

Erosion control/revegetation

Lighting

Curb/driveway work

Traffic control

Demolition

Remediation of hazardous conditions

Project Selection

Design Details

Maps & Exhibits

Photos

Public Support

Proposed Budget

Project Readiness

47

47

Examples of eligible vs ineligible activities

Eligible activities

- Preliminary Engineering
- *Incidental* landscaping, environmental mitigation, utility adjustments
- Land survey for ROW demarcation
- Construction engineering and inspection
- Project administration
- Acquisition of ROW (determined on a case-by-case basis)

vs.

Ineligible activities

- Application preparation
- *Major* landscaping, environmental mitigation, utility adjustments
- Legal services

Project Selection

Design Details

Maps & Exhibits

Photos

Public Support

Proposed Budget

Project Readiness

48

48

Proposed safety countermeasures included in Itemized Budget

Work Activities	Quantity	Unit	Unit Price	Amount
Mobilization	1	LS	\$72,000	\$72,000
Barricades, Signs and Traffic Control	1	LS	\$60,000	\$60,000
Remove Concrete Pavement (drive/intersection)	2,489	SY	\$30	\$74,667
Remove Concrete Curb & Gutter x 1	500	LF	\$6	\$3,000
Preparing Right of Way	2	AC	\$6,000	\$12,000
Embankment (FINAL), density controlled	5,000	CY	\$30	\$150,000
Excavation (special)	1,840	CY	\$20	\$37,545
Relocate Signage	1	LS	\$50,000	\$50,000
Lime Treated Subgrade (6 in)	8,149	SY	\$7	\$58,675
6 ft wide sidewalk - 4 in Concrete ★	5,256	SY	\$54	\$283,824
12 ft wide shared use path - 6in Concrete ★	2,893	SY	\$115	\$332,733
Curb ramps - 12 ft wide	2	EA	\$6,000	\$12,000
Curb ramps - 6 ft wide	30	EA	\$3,000	\$90,000
Cross Walk (Thermo) ★	7	EA	\$3,000	\$21,000
Conduit for signal (bore) - 4 inch	800	LF	\$120	\$96,000
Pedestrian Signal (head, pole, wiring complete) ★	8	EA	\$24,000	\$192,000
Concrete Driveway Replacement (6 in thick)	2,489	SY	\$78	\$194,133
Sod Re-establishment	11,440	LF	\$2	\$27,456
Extension of existing Culvert	1	LS	\$75,000	\$75,000
Bike Route Signage	1	LS	\$60,000	\$60,000
Pavement Markings and signage (bike/ped) ★	1	LS	\$12,000	\$12,000
Erosion Control	1	LS	\$16,800	\$16,800
Cobra head light pole -200 ft spc. - wire incl. ★	23	EA	\$12,000	\$276,000
Barrier in area where path nears road ★	1	LS	\$150,000	\$150,000
Utility Adjustments (sanitary sewer manholes)	1	LS	\$4,800	\$4,800
Storm Sewer (fill existing ditch)	2,000	LF	\$90	\$180,000
Retaining Wall -4 ft tall (west side near V.M)	1	LS	\$65,000	\$65,000
Concrete Curb and Gutter	2,200	LF	\$24	\$52,800

★ Safety Countermeasures

Proposed safety countermeasures not included in the budget will be removed from final project evaluation score.

Project Selection

Design Details

Maps & Exhibits

Photos

Public Support

Proposed Budget

Project Readiness

49

49

Project readiness

What does project readiness convey?

- TA projects must let for construction within 3 years! Readiness is important.
- Awareness of potential pitfalls, challenges, and delays
- Consideration of all phases of project development
- Understanding of TxDOT's project development processes

How does the project sponsor demonstrate project readiness?

- Project Details
- MPO TIP Letter (as attachment – grouping is encouraged!)
- Environmental Documentation, if available (as attachment)
- Property Ownership and Acquisition Information, if necessary (as attachment)
- Railroad Support/Right-of-Entry, if necessary (as attachment)
- Project Timeline (fill-in and as attachment)
- Itemized Construction Cost Estimate (fill-in)

Project Selection

Design Details

Maps & Exhibits

Photos

Public Support

Proposed Budget

Project Readiness

50

50

Advanced coordination may be necessary



Project Selection

Design Details

Maps & Exhibits

Photos

Public Support

Proposed Budget

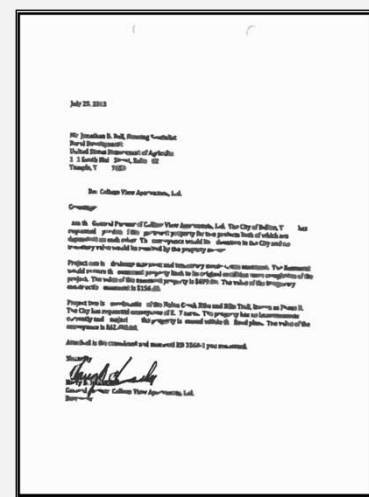
Project Readiness

51

51

Advanced coordination may be necessary - Railroads

- Railroad Impacts and Coordination
 - Obtaining railroad approval can take several years!
 - Coordination required for all projects that are within 50 feet of railroad (including grade-separated crossings)
 - Coordination required for projects that begin or end within 500 feet from an at-grade highway-rail crossing to ensure traffic control and construction do not interfere with an active crossing
- For projects that reach threshold for railroad coordination, documentation of railroad coordination must be included as an attachment to the detailed application



Project Selection

Design Details

Maps & Exhibits

Photos

Public Support

Proposed Budget

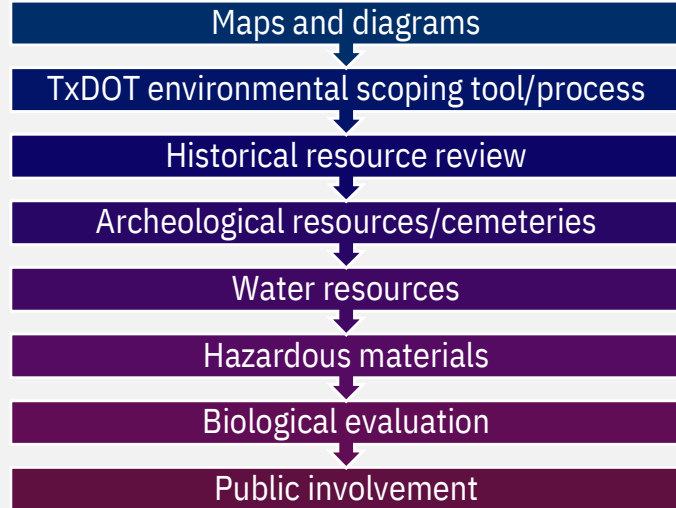
Project Readiness

52

52

Environmental documentation for categorical exclusions

Coordinate with your local TxDOT
Environmental Coordinator!



Project Selection

Design Details

Maps & Exhibits

Photos

Public Support

Proposed Budget

Project Readiness

53

53

Historical resources

Be proactive!

- Check the Texas Historical Commission atlas:
atlas.thc.state.tx.us/Map
- Search for Historic Resources Toolkit on txdot.gov

THC coordination occurs prior to environmental approval

Historical properties can affect design – and cost

Use TxDOT pre-certified professionals

Contact your district environmental coordinator to learn more!

Project Selection

Design Details

Maps & Exhibits

Photos

Public Support

Proposed Budget

Project Readiness

54

54

Transformative Elements score (Large Scale projects only)

Criteria Description	Criteria Measures
<ul style="list-style-type: none"> Eliminates significant barrier for peds and/or bikes Mitigates significant impacts to underserved communities Leverages and/or complements other existing projects in community Features significant economic development potential Features innovative partnerships Applies innovative, smart, or connected technologies 	Professional judgment of narrative responses

Detailed applications for **Large Scale** projects will also be required to submit **narrative responses** to support the Transformational Elements criteria category.

Project sponsors only need to respond to the questions that are **relevant to the subject project.**

55

55

#	Transformational Element Questions
1	Explain how the project addresses a significant barrier for pedestrians and bicyclists? How does the barrier limit bicycle and pedestrian access and how will access improve by addressing the barrier? Does the project close a significant gap, provide new connections, address a deficiency in an active transportation network, or meet an important community need. Will the project result in a convenient and logical route that offers improved access to destinations the community was previously unable to easily reach using non-motorized modes of transportation?
2	Explain how this project will improve bicycle and pedestrian access for historically underserved community residents. If applicable, illustrate and provide documentation on how the project was requested or supported by the underserved community residents with other supporting documentation. If applicable, address any concerns of displacement that may occur as a result of this project.
3	Describe how this project leverages other new or proposed funded projects or other community initiatives that will attribute to the transformative nature of this project? As you address this question, consider how this project relates to a) Transit, b) Land Use, c) The overall non-motorized network, and d) Local policies and/or ordinances
4	If applicable, describe how this project features significant economic development potential by transforming the non-motorized environment? As you address this question, consider how this project relates to a) Tourism, b) Commercial/Service Centers, c) Employment Centers.
5	Describe any innovative local, regional, or interregional partnerships involved in the development and implementation of this project.
6	Will this project propose any solutions that are new to the region? Are there any innovative elements, smart, or connected technologies included in this project?

56

56

Summary

Provide good
project details

Use maps,
diagrams, and
photos that tell a
story

Demonstrate good
public awareness
and support

Include a
thorough,
comprehensive
budget

Plan ahead and
coordinate early

Focus on the
evaluation criteria

Use Technical
Assistance
Resources

57

57

Online TA technical assistance resources

- Unique Aspects of TxDOT's TA Program → [Video](#) and [Brochure](#)
- Decision tree for determining project category → [PDF](#)
- Construction cost estimate assistance tool → [PDF](#)
- Guidance for initiating railroad coordination → [PDF](#)
- Video tutorial for creating and sharing google map → [Video](#)
- Best practices video for creating maps for TxDOT's TA Program applications → [Video](#)
- General timeline for project initiation and development → [PDF](#)



All of these resources can be found on
TxDOT's Bike and Ped Resources website →

58

58



Texas Pedestrian Safety Action Plan (PSAP)

What is the Texas Pedestrian Safety Action Plan?

A data-driven, statewide analysis of locations of both **historic** and **potential** pedestrian crash risk. Offers suggested countermeasure and geographic data analysis to a statewide audience.



59

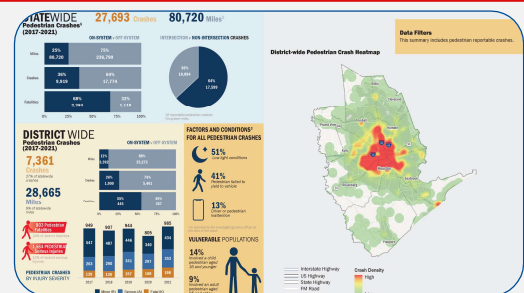


Connecting you with Texas.

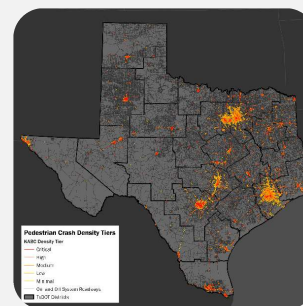
Products



Pedestrian Safety Screening Tool



TxDOT District Safety Profiles



Statewide Summary Report

60

60

PSAP Uses

Informs project
identification and
scoping

Reference source
for grant
applications
(TA, SS4A, ATIIP,
CRP, Reconnecting
Communities,
RAISE, etc.)

Informs TxDOT
District and MPO
Safety Plans

Included in
TxDOT's Strategic
Highway Safety
Plan (SHSP) and
Vulnerable Road
User Assessment



For more information, downloads, and links, visit
[TxDOT's PSAP webpage.](#)

61

61

Live PSAP demonstration

62

62

Thank you for attending!

Contact us:
BikePed@txdot.gov

Contact your local District
TA coordinator



Local TxDOT District staff:

For more information



TxDOT's TA Website

63

63

HELP
#EndTheStreakTX
End the streak of daily deaths on Texas roadways.

TxDOT.gov (Keyword: #EndTheStreakTX)



#EndTheStreakTX Toolkit



64

64