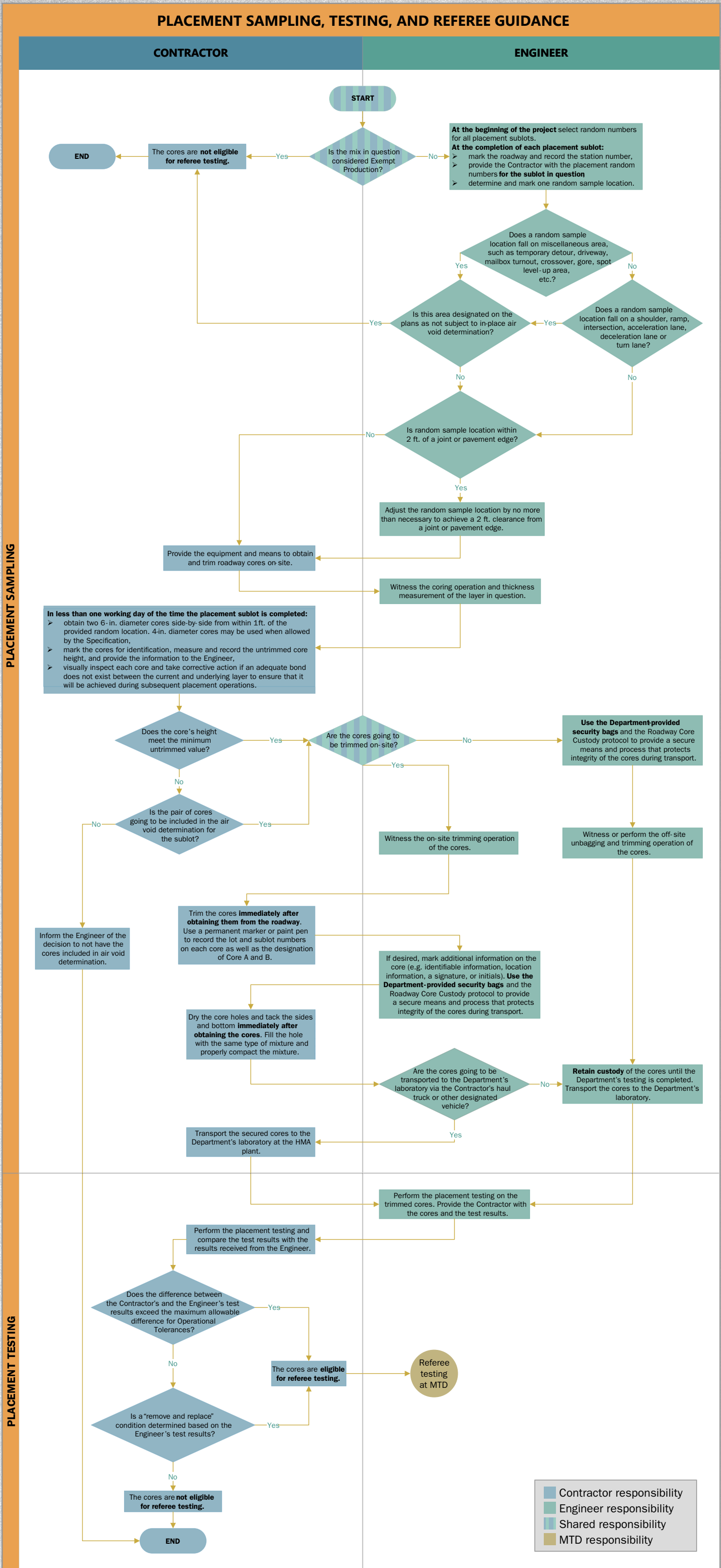




Placement Sampling, Testing, and Referee Guidance

A quick reference to the HMA Specifications



Flexible Pavements Section Contacts:

Travis Patton
Travis.Patton@txdot.gov
512-506-5841

Marta Czarnecka Stephens
Marta.CzarneckaStephens@txdot.gov
512-506-5908

November 2021



MATERIALS AND TESTS
DIVISION