



# PORT of BAY CITY

Port of Bay City Authority

Craig Hlavinka, Harbormaster

[www.portofbaycity.com](http://www.portofbaycity.com)



Energy



Break Bulk



Ro/Ro



Other

*The Port of Bay City is a mixed-use industrial and recreational port that manages the shallow draft Colorado River Channel. The Port has operated the Matagorda Harbor Marina near the Gulf Intracoastal Waterway (GIWW) since its opening in 1990. The port has approximately 150 acres of land for industrial development near its terminal situated roughly 15 miles inland, suitable to substantial tonnage industries traveling both inbound and outbound.*

## Port Priorities & Opportunities

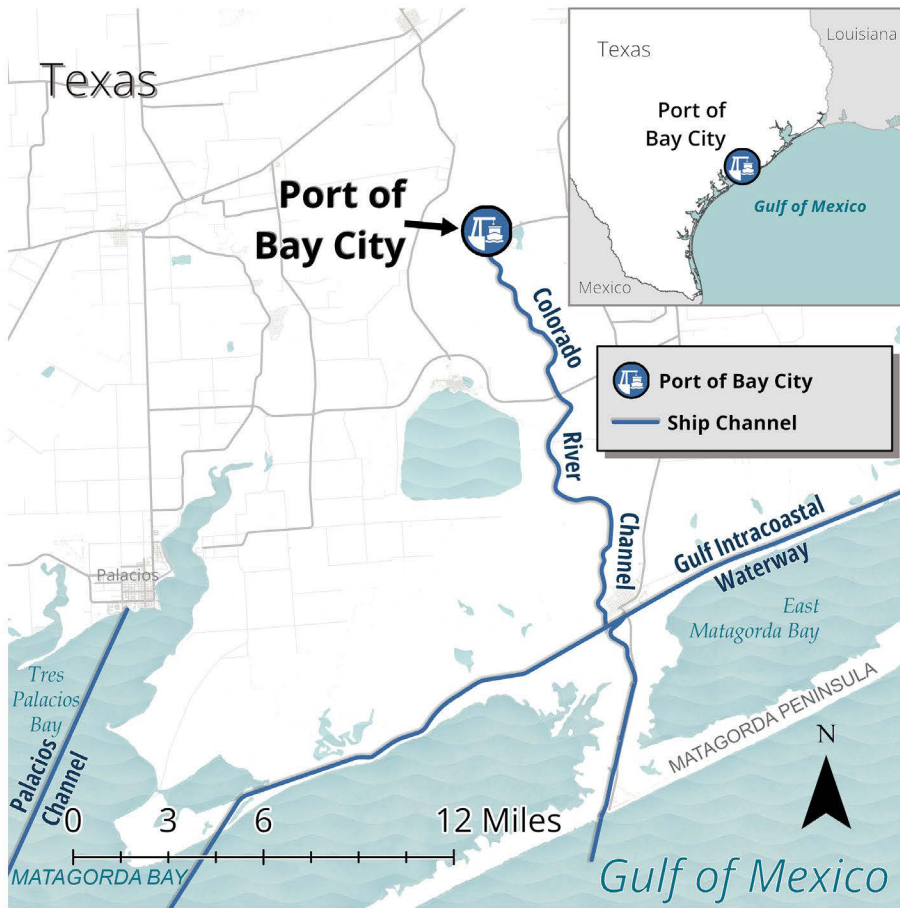
The Port of Bay City's evolution in recent years has been marked by strategic acquisitions and plans for expansion, notably by the port purchasing property near Matagorda initially for industrial use and later re-envisioned for a harbor expansion catering to pleasure crafts. While initial bond efforts for these projects did not materialize, these endeavors highlight the port's adaptive strategies and potential future directions. Addressing inland connectivity remains a priority for the port, with ongoing challenges such as traffic congestion around FM 3057 and FM 259. Proposed solutions include adding traffic signals and improving road infrastructure to support the expanding port operations and the increasing activity at adjacent industrial sites like Roehm America.



*Matagorda Harbor on the Colorado River Entrance  
Photo credit: Port of Bay City*

In terms of opportunities, the port is poised to significantly enhance its infrastructure and operational capacity. A \$9.6 million grant for development in the Colorado River area underscores the port's commitment to leveraging federal funds for strategic improvements. However, persistent issues such as shoaling in the Colorado River and the need for dredging to maintain navigational depths indicate critical areas for investment to ensure the port's efficiency and competitiveness. The exploration of new projects for container yards and truck queuing areas signifies a broad vision for the port's future development, focusing on expanding its capacity to accommodate growing trade and recreational demands.





# CARGO CONNECTIONS

## Top Commodities

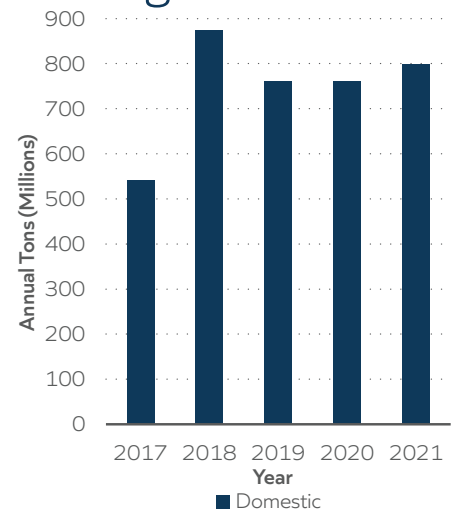
### EXPORTS

- Fertilizers and Chemicals
- Petroleum & Petroleum Products
- All Manufactured Equipment, Machinery, and Products

### IMPORTS

- Fertilizers and Chemicals
- Primary Manufactured Goods
- All Manufactured Equipment, Machinery, and Products
- Petroleum & Petroleum Products

## Tonnage



Tonnage data from USACE Waterborne Commerce Statistics Center, 2024

## PORT FACILITIES

### DOCKS & WHARVES

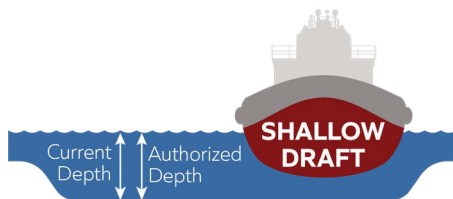
- Concrete terminal facility dock
- Liquid cargo dock
- Terminal shed with open floor space to handle cargo
- Matagorda Harbor

## SHIP CHANNEL

**Ship Channel Name:** Colorado River Channel

**Current Depth:** 12 ft

**Authorized Depth:** 12 ft



## INTERMODALITY

### ROAD

- Access to FM 3057

### RAIL

- Connections to BNSF and Union Pacific

### BARGE

- 15-mile sailing distance to GIWW (M-10, M-69)

### AIR

- 20 miles from Bay City Regional Airport

### PIPELINE

- Access to natural gas, oxygen, and nitrogen pipelines



Port facilities  
Photo credit: Port of Bay City