

**TEXAS DEPARTMENT OF  
TRANSPORTATION 2025-2026  
EDUCATIONAL SERIES**

# **METROPOLITAN PLANNING ORGANIZATION**

- Metropolitan Planning Organization Responsibility
- Implementation of Metropolitan Planning Organization Planning Programs
- Metropolitan Planning Organization Map



**Texas Department of Transportation (TxDOT):** Public website offering information and resources for drivers, businesses, government officials, and anyone interested in learning about TxDOT.



**TxDOT 2025-2026 Educational Series:** Focuses on key transportation issues affecting TxDOT and Texas.





## PLANNING ORGANIZATION RESPONSIBILITY

Metropolitan Planning Organizations are responsible for conducting the urban transportation planning process that allows the Metropolitan Planning Organizations to receive federal and state transportation funding. The primary Metropolitan Planning Organizations planning documents include:

- Metropolitan Transportation Plan (MTP) – A long-range plan (minimum 20-year) that outlines proposed transportation improvement projects and identifies potential funding sources for those projects;
- Transportation Improvement Program (TIP) – Guided by federal financial constraint requirements, the Transportation Improvement Program is a short-range (four-year) list of projects that are ready for construction scheduling. Metropolitan Planning Organizations must identify reasonably expected funding for the listed projects; and
- Unified Planning Work Program (UPWP) – A one to two-year work plan and budget developed by Metropolitan Planning Organizations. The Unified Planning Work Program describes proposed activities, their estimated costs, and funding sources for projects in the Transportation Improvement Program.

## IMPLEMENTATION OF METROPOLITAN PLANNING ORGANIZATION PLANNING PROGRAMS

Once all 24 Texas Metropolitan Planning Organizations approve their regional Transportation Improvement Programs, TxDOT compiles them with rural Transportation Improvement Programs and other state transportation programs into one document, the Statewide Transportation Improvement Program (STIP). The Texas Transportation Commission and Federal Highway and Transit Administration officials review and approve the Statewide Transportation Improvement Program. Local project sponsors and TxDOT then work together to implement the Statewide Transportation Improvement Program projects.

## OVERVIEW

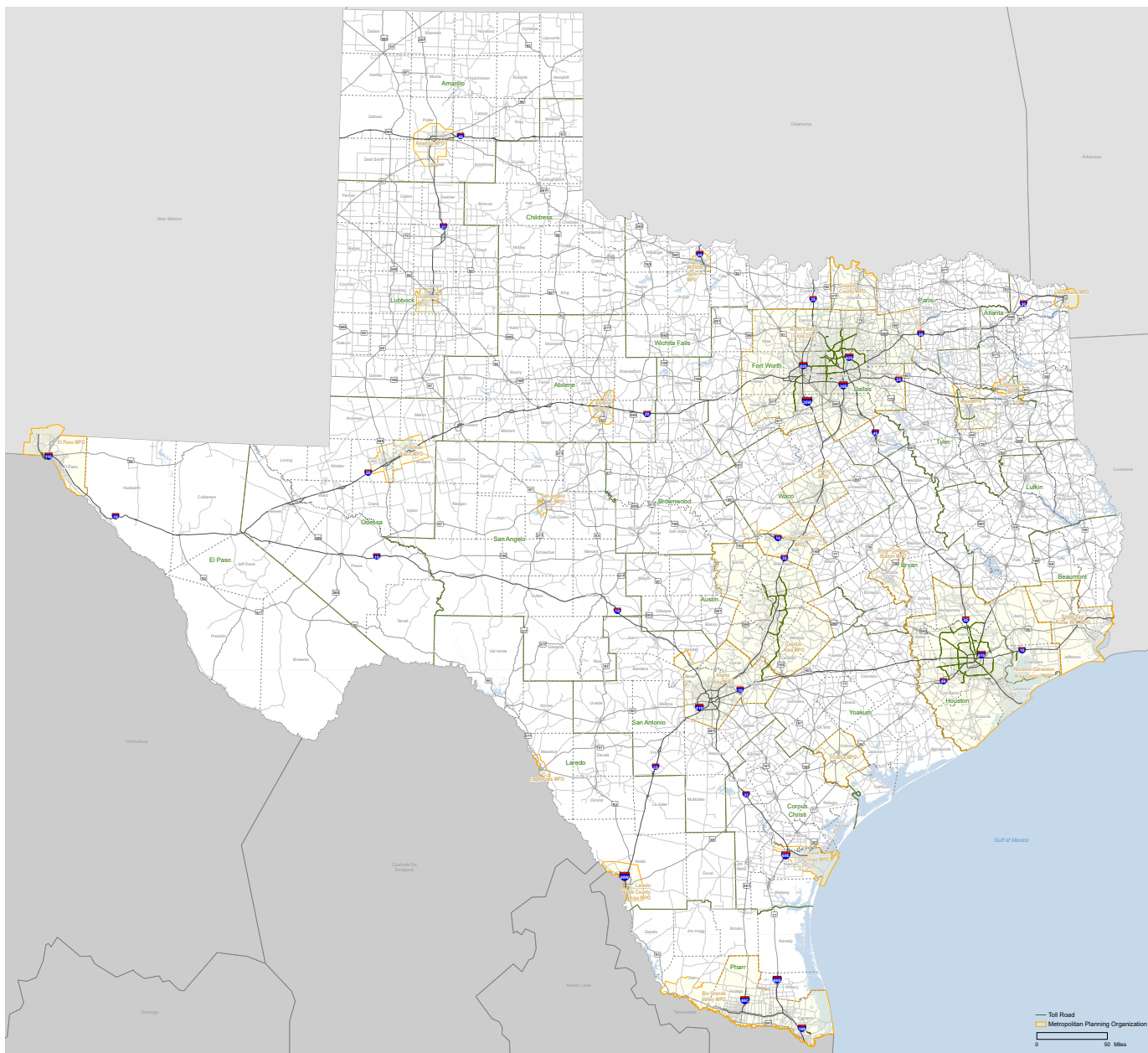
A Metropolitan Planning Organization (MPO), is a local decision-making body responsible for overseeing the metropolitan transportation planning process. Federal law requires governors to designate a Metropolitan Planning Organization for each urban area with a population of more than 50,000 people through agreements between the governor and the local governments that together represent at least 75 percent of the affected population.

There are currently 24 Metropolitan Planning Organizations in Texas. A Metropolitan Planning Organization can be a stand-alone agency. However, some local governments form their Metropolitan Planning Organization as an agency within a city, county, or council of governments organization. Each Metropolitan Planning Organization has a governing policy board, which adopts the Metropolitan Planning Organization's policy, bylaws, and organizational procedures.

Composed of local elected officials and local representatives of state agencies and guided by local public input, Metropolitan Planning Organizations coordinate transportation planning within their respective urban areas. Metropolitan Planning Organizations, the Texas Department of Transportation (TxDOT), and the Texas Transportation Commission work together to balance the transportation needs of local communities with the need for statewide connectivity. Metropolitan Planning Organizations receive funding through federal, state, and local sources. TxDOT manages the allocation of federal and state transportation funds to the Metropolitan Planning Organizations in Texas.

## METROPOLITAN

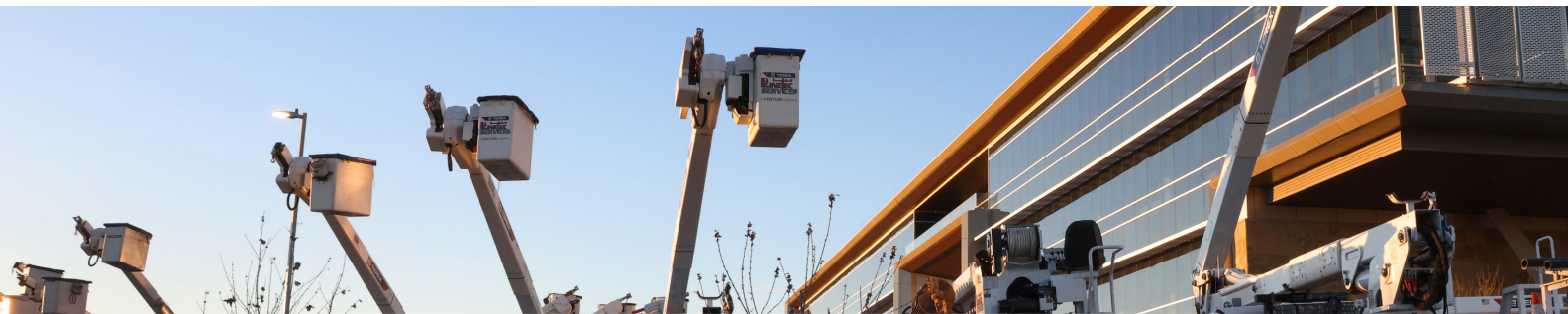
# METROPOLITAN PLANNING ORGANIZATION MAP



**METROPOLITAN  
PLANNING  
ORGANIZATION MAP**

<https://ftp.dot.state.tx.us/pub/txdot-info/tpp/maps/mpo-cog.pdf>





## MISSION

Connecting you with Texas.

## VISION

A forward thinking leader delivering mobility, enabling economic opportunity, and enhancing quality of life for all Texans.



## VALUES

### People

People are the Department's most important customer, asset, and resource. The well-being, safety, and quality of life for Texans and the traveling public are of the utmost concern to the Department. We focus on relationship building, customer service, and partnerships.

### Accountability

We accept responsibility for our actions and promote open communication and transparency at all times.

### Trust

We strive to earn and maintain confidence through reliable and ethical decision-making.

### Honesty

We conduct ourselves with the highest degree of integrity, respect, and truthfulness.



## PRIORITIES

### Safety

Design, build, operate, and maintain our transportation system with safety as our #1 priority.

### Delivery

Responsible program execution throughout the transportation life cycle (planning, design, construction, maintenance, and operations).

### Innovation

Forward-thinking, technology-focused, fostering a culture of continuous improvement.

### Stewardship

Professional, responsible stewards of resources.

