



# Keep the Texas Triangle Moving

## Texas Triangle Multimodal Strategic Plan (TTMSP)

WINTER 2025  
UPDATE

*If you have questions on the study, please contact:*

**Tyler Graham**

Freight Systems Branch  
Manager

Transportation Planning  
& Programming Division

[tyler.graham1@txdot.gov](mailto:tyler.graham1@txdot.gov)

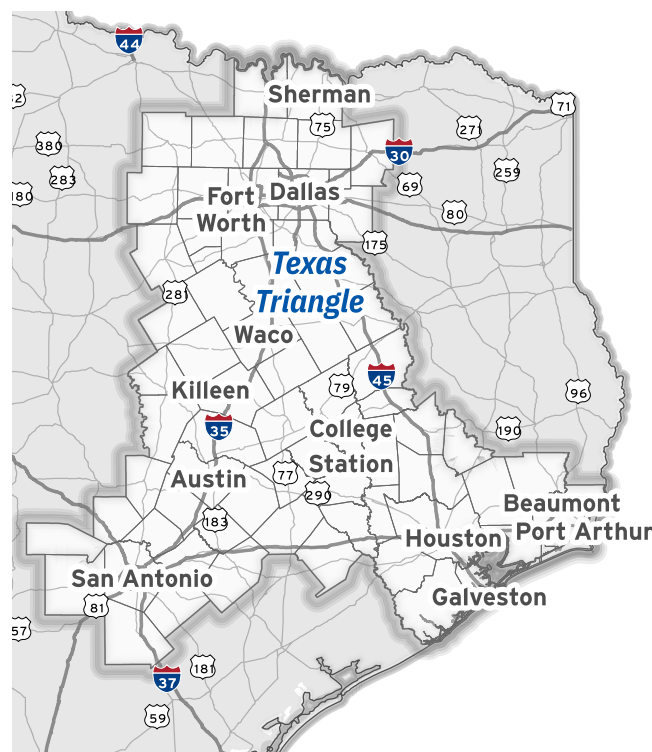
## The Texas Triangle Multimodal Strategic Plan

The Texas Triangle Multimodal Strategic Plan (TTMSP) is examining the short-, medium-, and long-term mobility needs, challenges, and opportunities within the region as well as to and from major trade gateways. It is a forward-looking strategic plan designed to support Texas's economic growth through safe, efficient, and resilient mobility.

This plan will help Texas Department of Transportation (TxDOT) better understand and respond to how the Texas Triangle is evolving, how people and goods are moving today, and how they could move in the future. All of this is being driven by feedback from stakeholders that helps identify what TxDOT can do to improve mobility across the Texas Triangle.

## The Texas Triangle

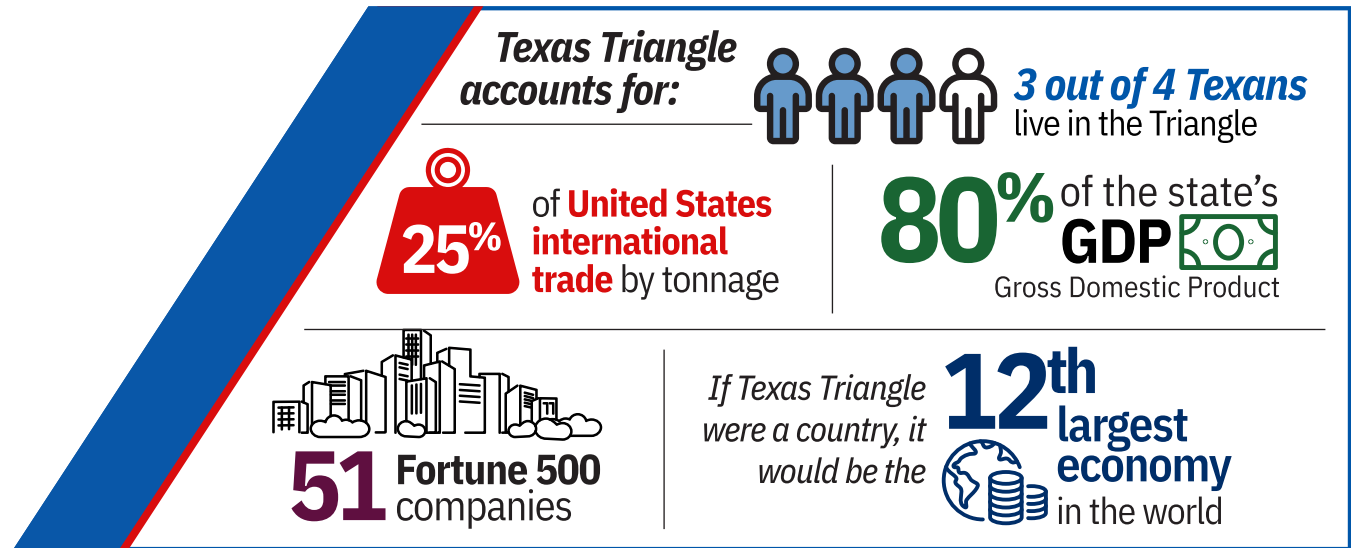
Texas has been named the number one state for doing business in the United States by chief executive officers for 20 years in a row<sup>1</sup>. Keeping the Texas economy moving and growing depends on keeping people and goods moving throughout the Texas Triangle. Safe, efficient, and resilient mobility into, out of, and throughout the Texas Triangle is critical to maintaining the state's economic standing and competitiveness.



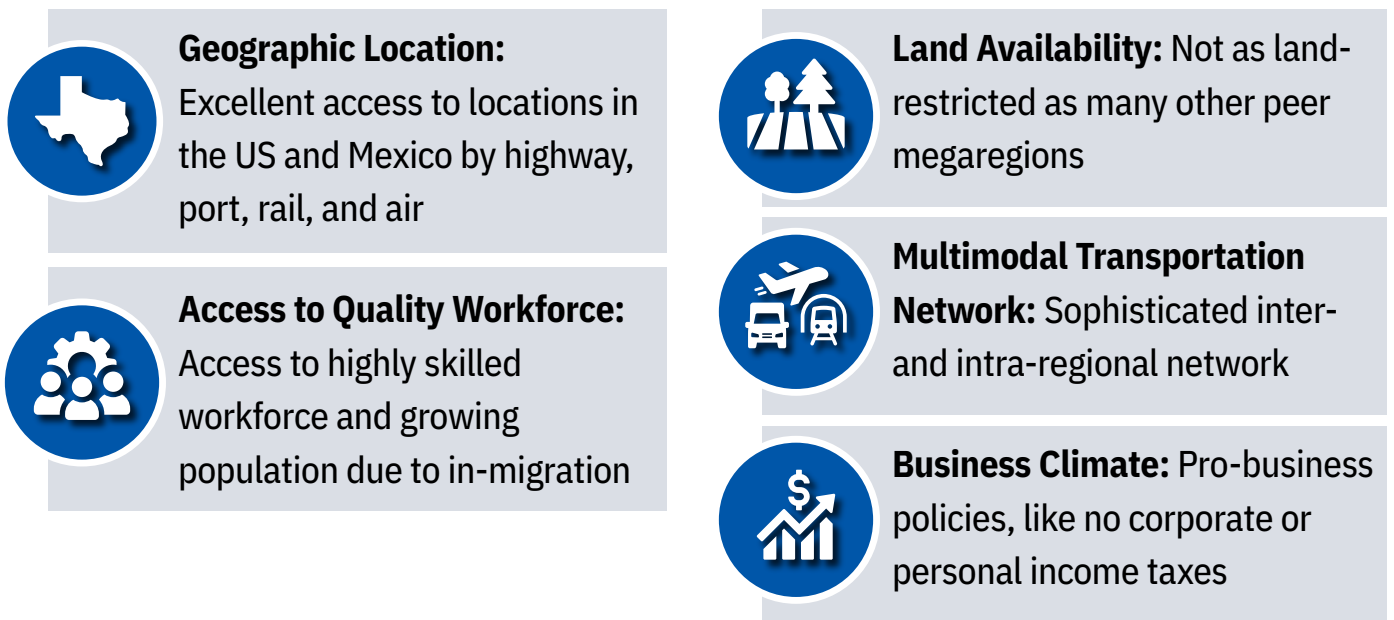
*Map of the Texas Triangle study area*

<sup>1</sup> Source: Chief Executive Magazine

The **Texas Triangle** is the economic engine that drives the Texas economy:



## What Has Driven Growth in Texas Triangle?



## Mobility in the Texas Triangle

The transportation network in the Texas Triangle is truly multimodal and includes nearly 3,000 miles of highway (including 1,692 miles of interstate), an expansive freight and passenger rail system consisting of approximately 4,000 miles of track, 85 rail yards, 15 ports that conduct international

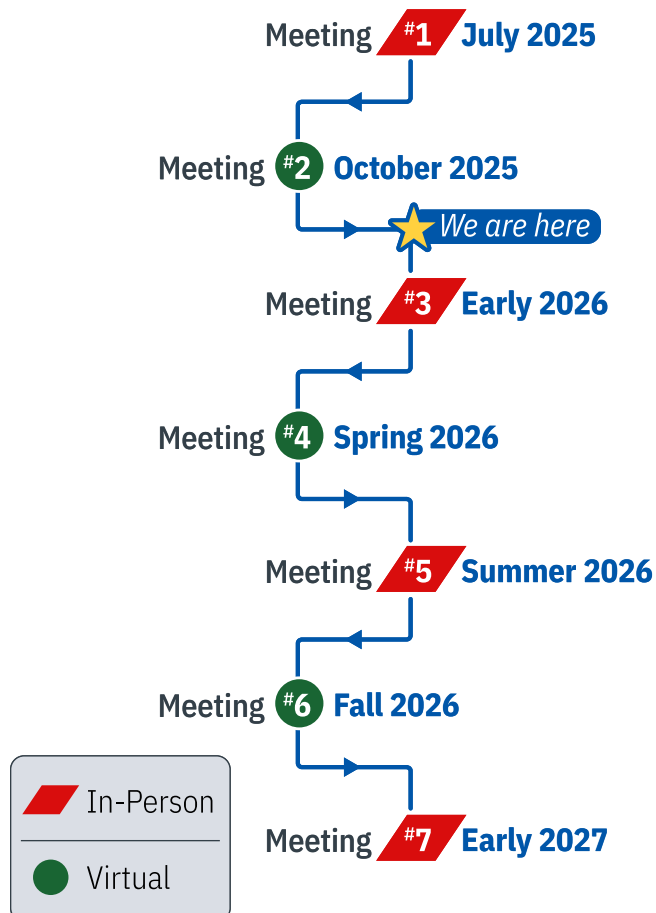
trade, including six Gulf Coast seaports, and two intermodal inland ports. The Texas Triangle is also home to six major commercial service airports, nine rail mass transit lines, six metropolitan transit authorities, 17 urban transit districts, and statewide, regional, and local trail systems.

## Stakeholder Engagement

TxDOT is convening a Mobility Working Group that includes private sector businesses, freight, industry, and mobility stakeholders from across the Texas Triangle. The group is providing insight into the challenges and needs around the mobility of people and goods in the Texas Triangle. The Mobility Working Group will continue to provide input as future scenarios, strategies, and recommendations are developed.

Ongoing engagement with the Mobility Working Group, TxDOT Districts and Divisions, Metropolitan Planning Organizations and Councils of Governments has helped refine key performance indicators and support the development of a regional needs assessment and modeling for future network performance.

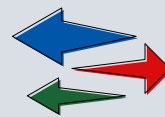
*Working Group Meeting timeline:*



TxDOT plans to hold additional meetings and engagement opportunities throughout 2026 for stakeholders to provide feedback that will support the plan's development.

### Achieving World Class Mobility

Stakeholder feedback identified attributes that the transportation network needs to achieve world class mobility. These attributes allow the network to not just keep people and goods moving but also support economic growth and vitality for the Texas Triangle region.



Efficient and Reliable  
Mobility



Safe Travel



Supportive of Economic  
Vitality



Leverages Technology



Provides Connectivity



Has Sustainable Funding



Promotes Environmental  
Sustainability



Maintains State of Good  
Repair

## Draft Key Performance Indicators (KPIs)

The key performance measures are being evaluated to understand how the network is performing today, any gaps related to mobility and how the network will perform in the future. These measures will also help assess the economic vitality of the region. Additionally, People and Goods Mobility Scores are being developed to better understand how the multimodal network is performing with today's capacity, efficiency, and reliability, and will be used as a baseline to gauge how the network will perform in future scenarios being modeled.



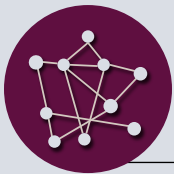
**People and Goods Mobility Scores** – modal capacity, efficiency, and reliability



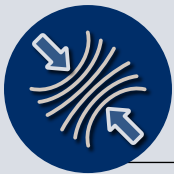
**Workforce Access** – access to employment opportunities and access to employees/labor



**Safety** – incidents and severity across modes



**Multimodal Connectivity** – passenger multimodal access and freight modal connectivity



**Resiliency** – network vulnerability to hazards and network redundancy

## Next Steps & Schedule

The study team is currently assessing the existing and future multimodal needs of the Texas Triangle region. Additionally, the team is developing trends and forecasts that will be used to develop future transportation scenarios. As the scenarios are developed, stakeholders, including the Mobility Working Group, will continue to provide input that will help refine the future scenarios.

### TTMSP Study Timeline

