



# Welcome to the TxDOT/TTI Truck Parking Workshop

**The presentation will begin at 8:30**

*Please keep your mic on Mute unless asking a question*



## TxDOT/TTI Truck Parking Workshop



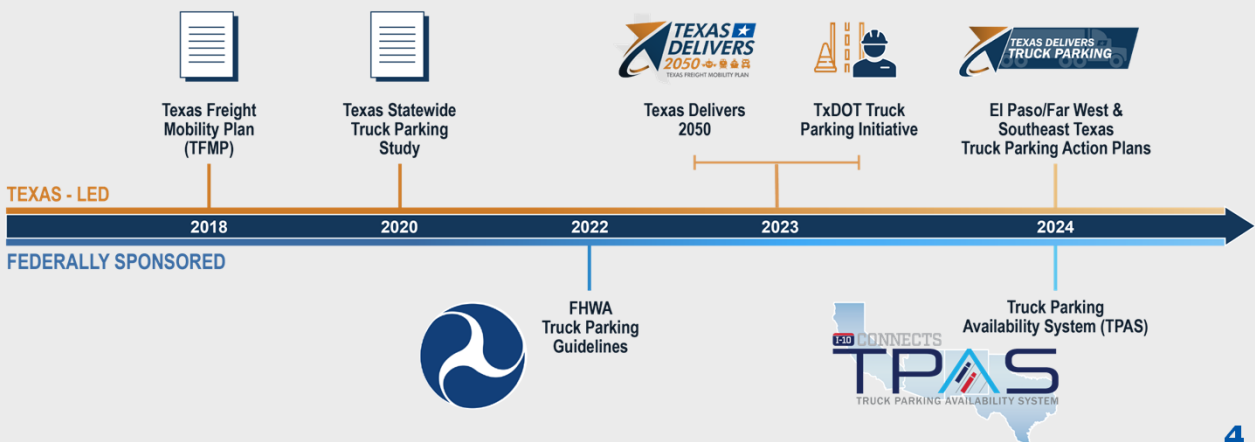
December 4, 2024

Time	Topic	Speaker(s)
8:30	Welcome, Orientation	Kale Driemeier, TxDOT
	TxDOT Truck Parking Needs and Capacity Studies	
8:35	Statewide Truck Parking Context	Brian Comer, HNTB
8:50	Regional Truck Parking Studies: Southeast Texas—Houston-Beaumont West Texas—El Paso to Pecos	Jeremy Upchurch, HNTB
9:05	Discussion	
	TxDOT Truck Parking Information Applications	
9:15	I-10 TPAS in TX, NM, AZ and CA—latest plans for installation	Brian Comer, HNTB
9:35	I-45 safety rest areas truck parking capacity monitoring	Tony Moritz, TTI
9:50	Discussion	
10:00	Break	
10:15	TTI/TxDOT Truck Parking Visualization tool demonstration	L.D. White, TTI
	Texas Truck Parking Capacity Projects	
10:45	TxDOT Maintenance Division 10-year Truck Parking Plan	Brent Johnson, TxDOT
11:00	RAISE Grant for truck parking on SH 130 in Caldwell County	James Lovett, SH 130 Concession Company
11:15	Discussion	
11:25	Conclusion/Summary	Kale Driemeier, TxDOT
11:30	Adjourn Workshop	

3

## TxDOT Truck Parking Efforts

### Truck Parking Efforts



4



# Statewide Truck Parking Context

Truck Parking Workshop



December 4, 2024



## Why Truck Parking Matters

Connecting you with Texas.



### Safety

- Between 2018 and 2022 there were 144,377 commercial vehicle crashes; 2,950 involved parked trucks, 106 of those crashes involving parked trucks resulted in fatalities.



### Economic Impact

- Freight tonnage moving to or from Texas has grown nearly 29% between 2014 and 2019 from 2.8 billion tons to about 3.7 billions tons.
- FHWA estimates trucks carry over 19 billion tons of freight valued at more than \$18 trillion annually in the U.S.



### Time and Money

- 9,300 revenue-earning miles are lost every year.
- \$4,600 annually is lost due to the lack of truck parking.



### Preservation of Roadways

- Lack of parking means trucks often park on shoulders and ramps.
- Parking in unauthorized locations poses safety hazards and causes damage to pavement and property.



6

## Truck Parking Needs



Federal Hours of Service (HOS) regulations include strict provisions on driving limits and rest breaks, enforced by in-cab electronic logging devices.

### Federally Mandated Operational Needs



10-hour Rest



30-Minute  
Break



Time Off



### Unique Needs



2+ Hour  
Staging



Emergency



Intermodal  
(Ports)



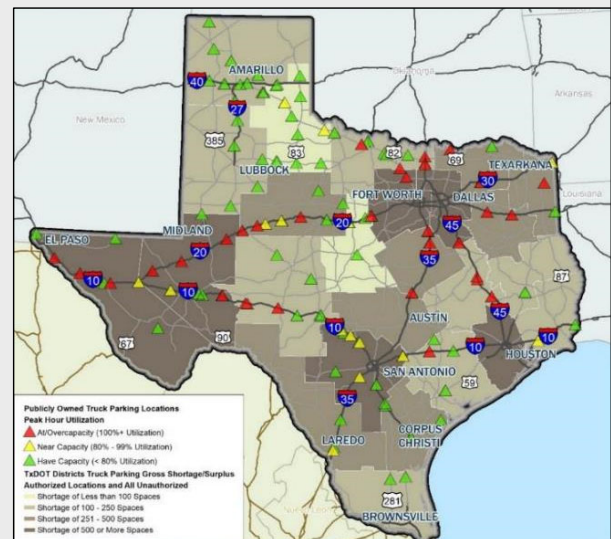
Border

7



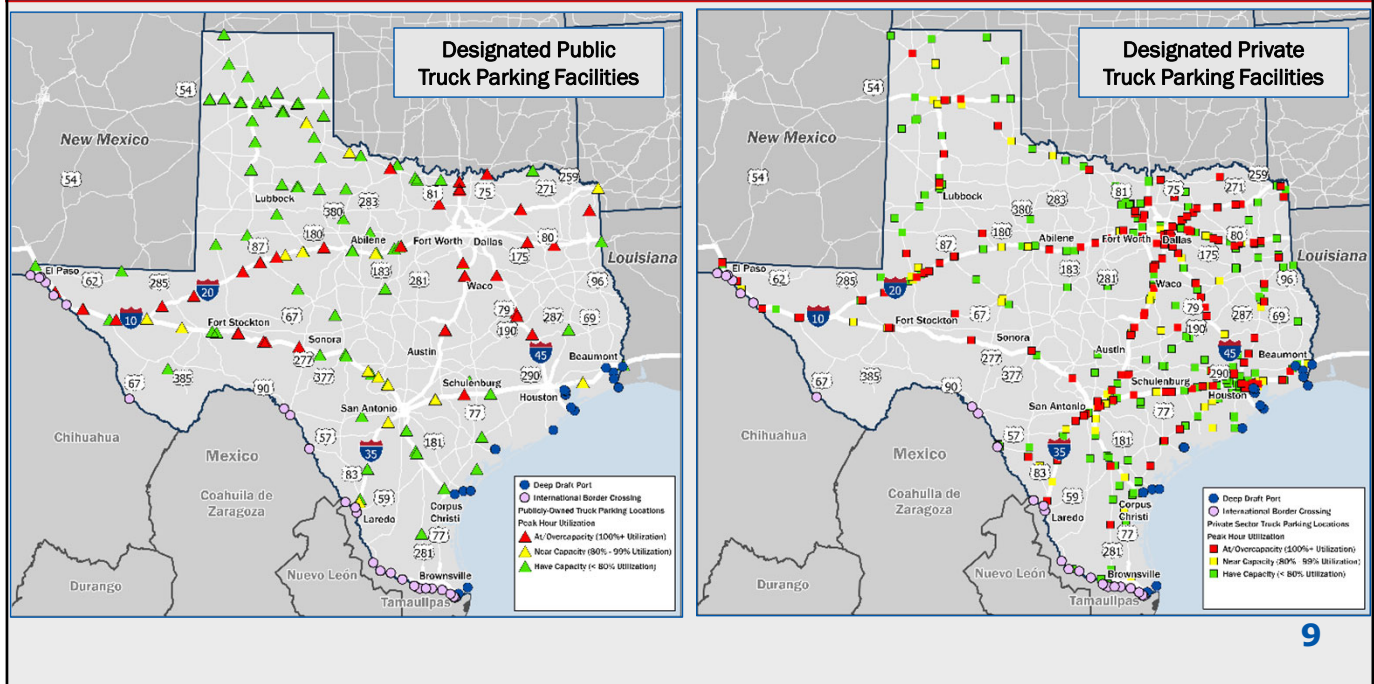
## 2020 Statewide Parking Study

- Improve safety, reduce congestion, and enhance economic competitiveness of the Texas Multimodal Freight Network
- Reduce undesignated truck parking on TxDOT right-of-way
- Develop actionable strategies to meet truck parking and basic driver needs across the state, including oversize/overweight loads
- Identify ways to partner with the private sector to meet the state's truck parking needs
- Leverage technology to ensure efficient use of TxDOT maintained truck parking
- Address parking needs at key truck generators including seaports and border ports of entry



8

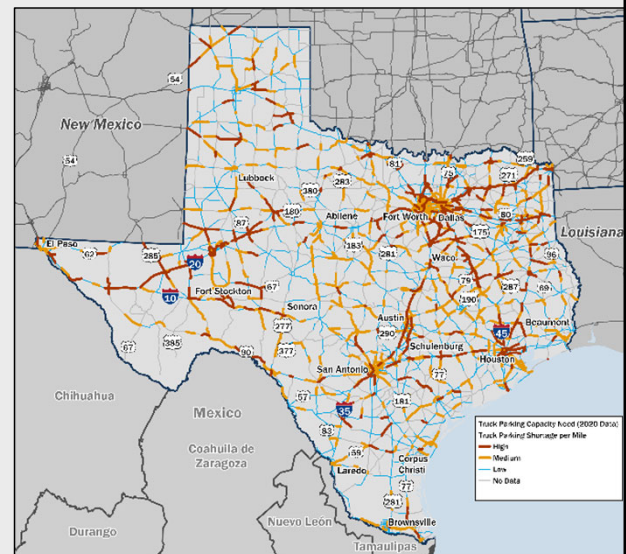




9

## Truck Parking Demand

- The I-10, I-20, I-35 and I-45 corridors have the highest truck parking shortages in the state.
- The highest concentrated truck parking demand is near and within the large freight intensive metro areas including but not limited to Dallas/Fort Worth, Houston, Austin, San Antonio, and El Paso.
- There are unique truck parking challenges within the Permian Basin, international border crossings, and maritime ports.



10



# Regional Truck Parking Studies

Truck Parking Workshop



December 4, 2024



Connecting you with Texas.

## Table of Contents

- 3** | Overview of Truck Parking Action Plans
- 6** | Regional Priorities
- 9** | Stakeholder Outreach
- 12** | Recommendations
- 27** | Questions



**12**





## Overview of Truck Parking Action Plans



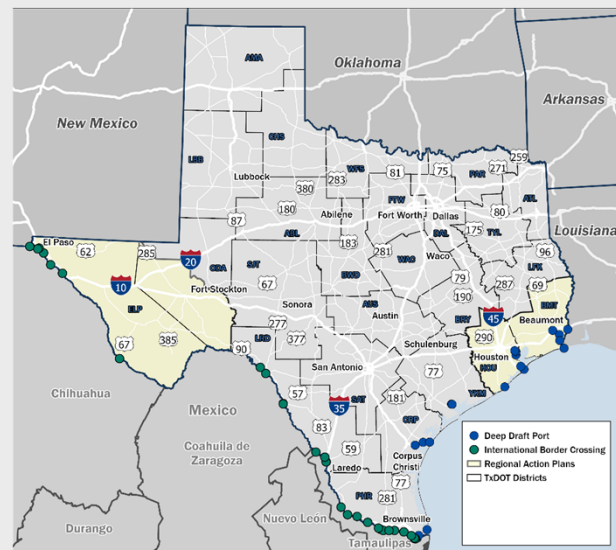
July 10, 2024



Connecting you with Texas.

### Texas Truck Parking Action Plans

- TxDOT Transportation Planning and Programming Division.
  - Advance recommendations from the 2020 Statewide Truck Parking Study.
  - TxDOT-led regional action plans.
  - Outcomes: conceptual action plans, preliminary cost estimates, short, mid, and long-term phasing concepts.



14

## Truck Parking Action Plans

- **High-level** evaluations of truck parking needs and demands, advancing recommendations from the Statewide Truck Parking Study
- **Does NOT identify funding or programming**, but:
  - Conducts extensive stakeholder outreach to better understand regional truck parking challenges
  - Team developed traffic impact analysis and environmental screening
  - Identifies opportunity sites and develops preliminary designs and cost estimates
  - Outlines technology and strategic opportunities for improving truck parking
  - Developed in partnerships with **MNT and Districts**



15

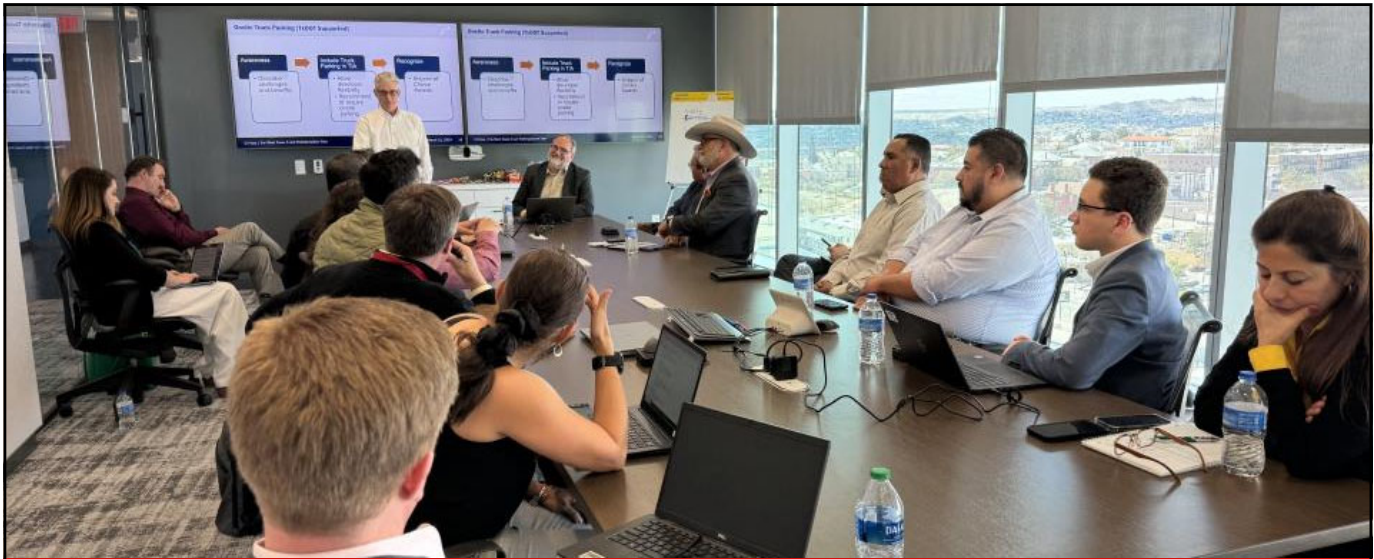


## Regional Priorities



17

18



## Stakeholder Outreach



July 10, 2024



Connecting you with Texas.

## Southeast Texas Truck Parking Action Plan

- **34 stakeholder meetings (29 virtual, 5 hybrid)**
  - Approximate number of attendees: 650
  - Key stakeholders: H-GAC, BAYTRAN, SETRPC, Ports, local agencies and industries.
- **What we heard**
  - Ports are supportive of truck parking investments.
  - Encourage local partnerships to consider private parking.
  - Potential shared use during off peak times for older commercial properties, speedways, and fairgrounds.
  - Dual usage of truck parking and staging for hurricane evacuation/emergencies.
  - Stakeholders are interested in grant support and advancing opportunities.



20

## El Paso/Far West Texas Truck Parking Action Plan

- **36 stakeholder meetings (in-person events)**
  - Approximate number of attendees: 466
  - Key stakeholders: Permian Basin Safety Coalition, CRRMA, El Paso MPO, Rio Grand COG, Cities of El Paso, Pecos and Van Horn, etc.
- **What we heard**
  - Border crossing truck parking needs near Bridge of the Americas, Marcelino Serna, Presidio/Ojinaga
  - I-10 and I-20 long-haul truck traffic is increasing
  - Need basic amenities for drivers; there are also roadway maintenance priorities
  - Incident management: there are no parallel routes during closures including weather-related events at the I-10/I-20 split
  - Need for staging parking – participants noted that due to sand/oil and gas industry, specific areas and roads can become backed up with trucks waiting to load or unload



21



## Recommendations

## Southeast Texas Key Recommendations

### TxDOT-Led

- New truck parking capacity in TxDOT ROW
- Technology
  - TPAS expansion for new sites
  - ConnectSmart
- Truck Parking Guidance



Visit [www.txdot.gov](http://www.txdot.gov) and search "Truck parking" to find both Action Plans, Story Maps and Tool kit.

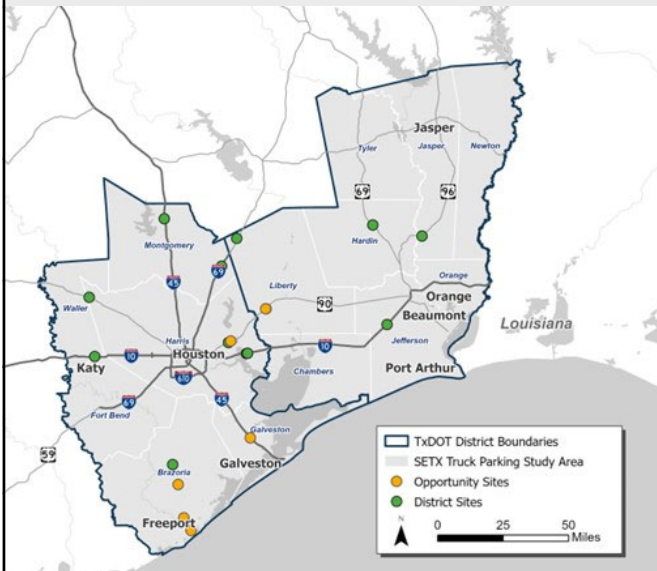
### TxDOT-Supported

- Emergency parking in coordination with FEMA
- Staging parking near Ports
- Curbside Truck Parking Pilot for the City of Houston
- Freight Village concepts for east and south-side of Houston



23

## Southeast Texas Truck Parking Opportunity Sites



- Opportunity sites identified by the Houston and Beaumont Districts and regional stakeholders.
- Project and district staff have prioritized sites for conceptual design support.
- Sites are being developed to support specific local needs.

24



## US 90 & Grand Parkway

- Adjacent to BNSF and UP logistics center
- Overnight, staging and owner-operator truck parking
- Trail connections



25

## Angleton Opportunity Site

- Lighting
- Restrooms
- Picnic areas
- EV Charging
- Park and ride
- Trail and sidewalk connections



26

## Port Freeport Site

- Innovative TxDOT and Port Freeport partnership.
  - TxDOT will build the truck parking infrastructure.
  - Port Freeport will operate and maintain it.
- Staging area truck parking with an office building for Port Freeport operations staff.
- EV charging stations for trucks and passenger vehicles, aligned with TxDOT's NEVI Program.



27

## I-45 and Delaney

- Located within existing TxDOT ROW at I-45 and Delaney Road in Texas City, north of Galveston.
- Proposes parking on both east and west sides of Delaney Road, north of I-45 to accommodate parking for overnight/HOS, local owner/operators, and staging for Port of Galveston drayage providers and nearby freight generators including an Amazon distribution center to the west.



28



## El Paso/Far West Texas Key Recommendations

### TxDOT-Led

- New truck parking capacity in TxDOT ROW
- Technology
- Truck parking guidance



### TxDOT-Supported

- Parking near border crossings
- Energy sector staging parking
- City, county, and private sector truck parking opportunities (Pecos)



VAN HORN



Permian Basin  
REGIONAL PLANNING COMMISSION



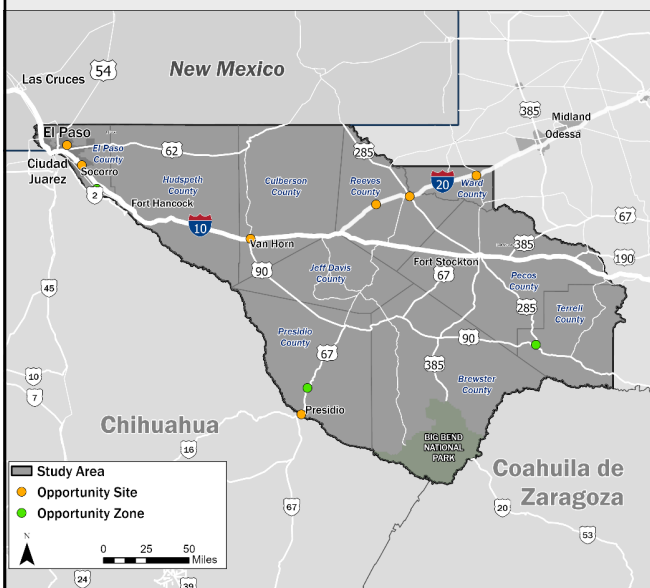
The Rio Grande  
Council of Governments



Visit [www.txdot.gov](http://www.txdot.gov) and search "Truck parking" to find both Action Plans, story maps and Tool kit.

29

## El Paso and Far West Texas Truck Parking Opportunity Sites



- Opportunity sites are targeted at critical infrastructure needs.
- Project and district staff are working with local partners to assess ways to accelerate freight infrastructure development.

30

## Van Horn



31

## US 67 Rest Area Concept



32



## Opportunity Site Example: Pecos, I-20, and US 285



33

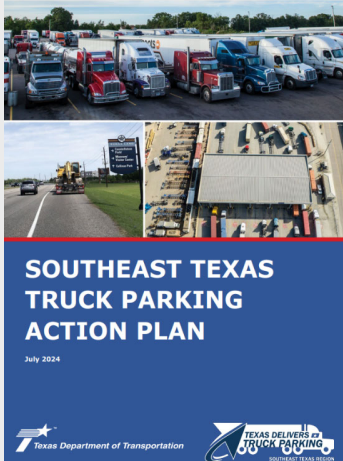
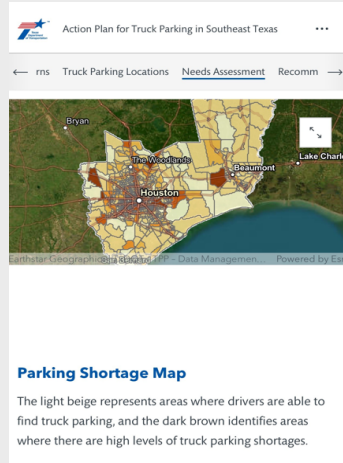
## Action Plan Next Steps

- **Continued collaboration between TxDOT and local public and private sector partners**
  - Provide resources including GIS-based data and public awareness content and materials to support messaging and information sharing regarding the critical need for truck parking facilities
  - Collaborate with Maritime Ports and other regional partners on truck parking needs and opportunities
  - Explore funding opportunities including competitive grant applications to advance projects identified in the Action Plans
- **Integrate truck parking considerations into TxDOT planning and project development processes to advance proposed projects**
  - Consider truck parking needs and opportunities during the project development process
  - Evaluate excess ROW opportunities for truck parking



34

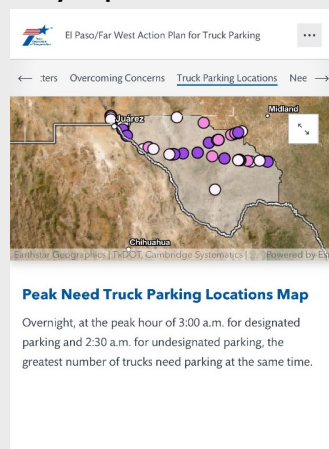
Visit [www.txdot.gov](http://www.txdot.gov), search "Truck parking" to find both Action Plans, Story Maps and Toolkit.

**Action Plan****Story Map****Tool Kit**

Southeast Texas Action Plan Released in July

35

Visit [www.txdot.gov](http://www.txdot.gov), search "Truck parking" to find both Action Plans, Story Maps and Toolkit.

**Action Plan****Story Map****Tool Kit**

El Paso/Far West Texas Action Plan Released in August

36



## I-10 TPAS Implementation

Truck Parking Workshop



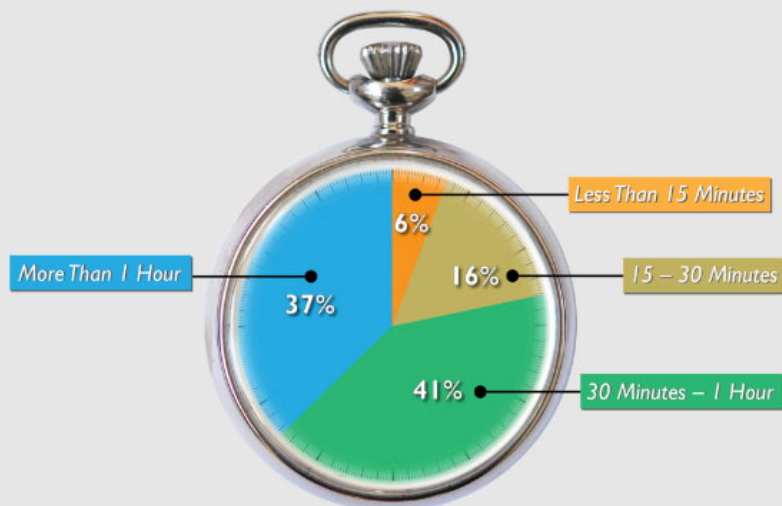
December 4, 2024



Connecting you with Texas.

### Why is TPAS Needed?

#### Average Time Spent Searching for Parking



- 78 percent of truck drivers are searching for parking for 30 minutes or longer
- Tired truck drivers can go over their required Hours of Service
- Helps tired truckers safely find available parking

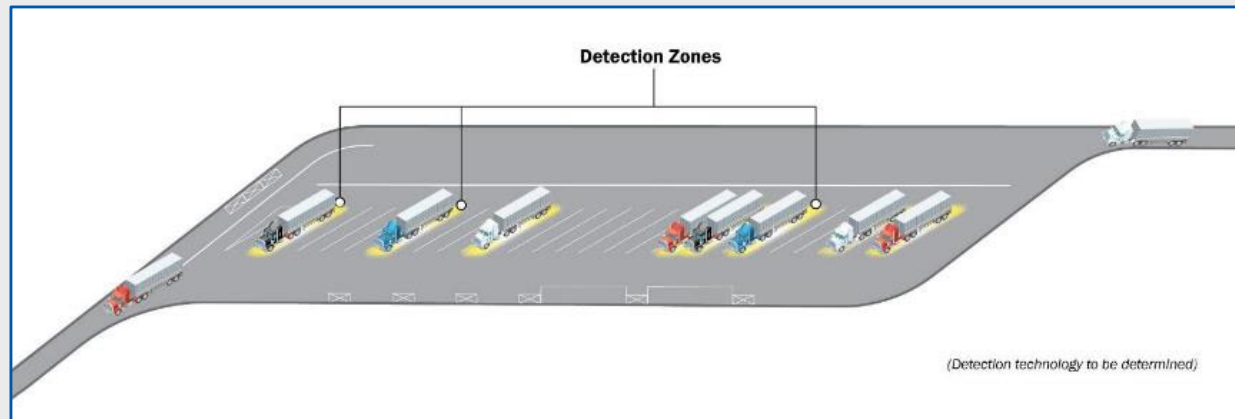
38







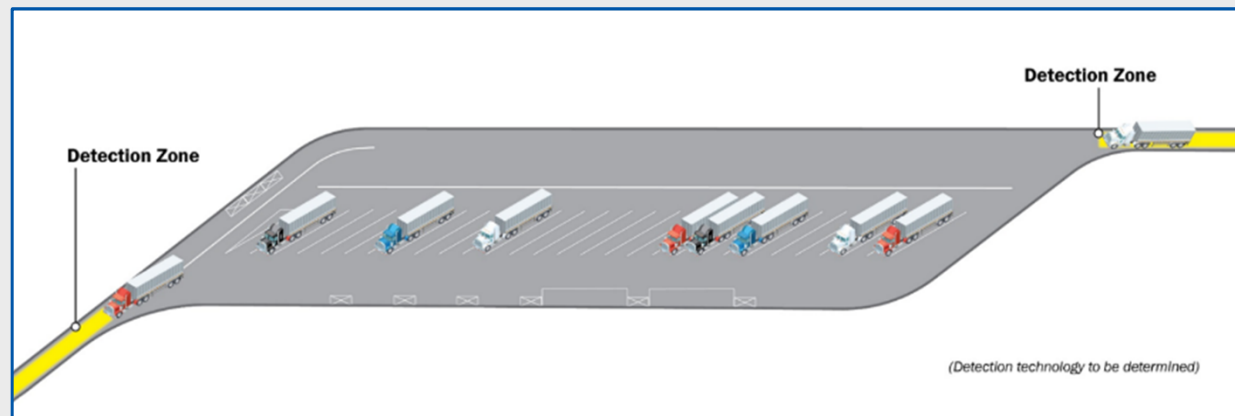
## I-10 TPAS Space Occupancy Counting Approach



- Space occupancy detection technology (video analytics, etc.)

41

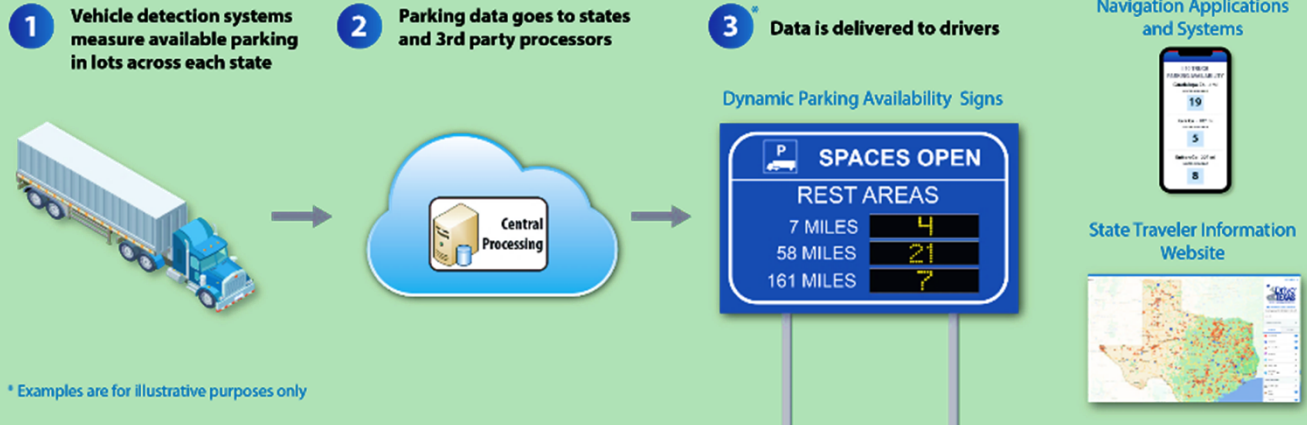
## I-10 TPAS Entrance/Exit Counting Approach



- Entrance/exit detection technology (video analytics and radar)

42

## How TPAS Works

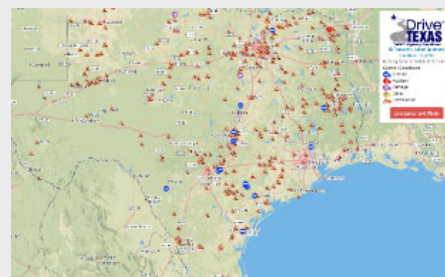


43

## How TPAS Information is Shared



Roadside Truck  
Parking Signs



Integration into  
DriveTexas™

Private (3<sup>rd</sup>-party)  
Smartphone or Web  
Traveler Applications



In-cab Integrated  
System



44

## Communications Tools & Strategies

### Traditional Media

- Media releases

### Social Media

- Posts on Facebook, Twitter
- YouTube "Shorts"

### Stakeholder Outreach

- Newsletters
- [Rack Cards](#)
- [Posters](#)



45



## Thank You

Brian Comer,  
AICP  
HNTB Corporation

### State Contacts

Texas: FengPin An  
[fengpin.an@txdot.gov](mailto:fengpin.an@txdot.gov)

New Mexico: Charles Remkes  
[charles.remkes@state.nm.us](mailto:charles.remkes@state.nm.us)

Arizona: Victor Yang  
[vyang@azdot.gov](mailto:vyang@azdot.gov)

California: Keith Holowecky  
[keith.holowecky@dot.ca.gov](mailto:keith.holowecky@dot.ca.gov)





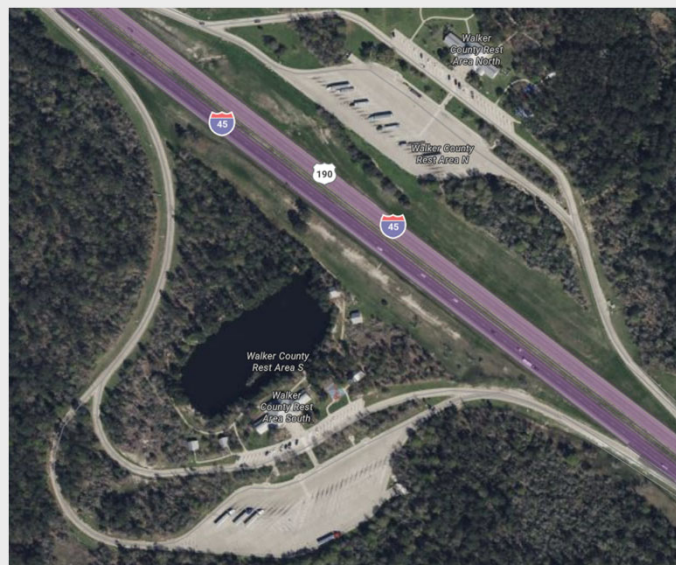
# I-45 Safety Rest Areas Truck Parking Systems and Expansion



Connecting you with Texas.

## Walker County Safety Rest Area

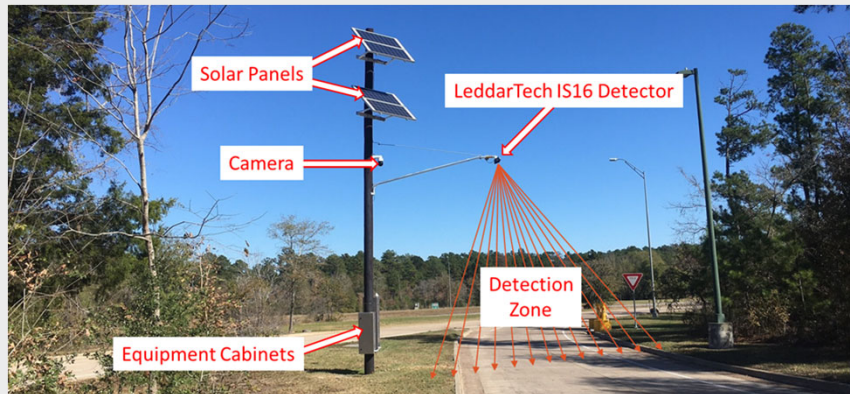
- TxDOT I-45 NB/SB Walker County Safety Rest Areas (operational since September 2020)
- Each truck parking lot has 28 marked truck spaces with additional 6 non-delineated spaces along curbs totaling 34 spaces
- Installed detection systems:
  - Entry/Exit System (Lot Count)
  - In-Ground Space Counting System



48

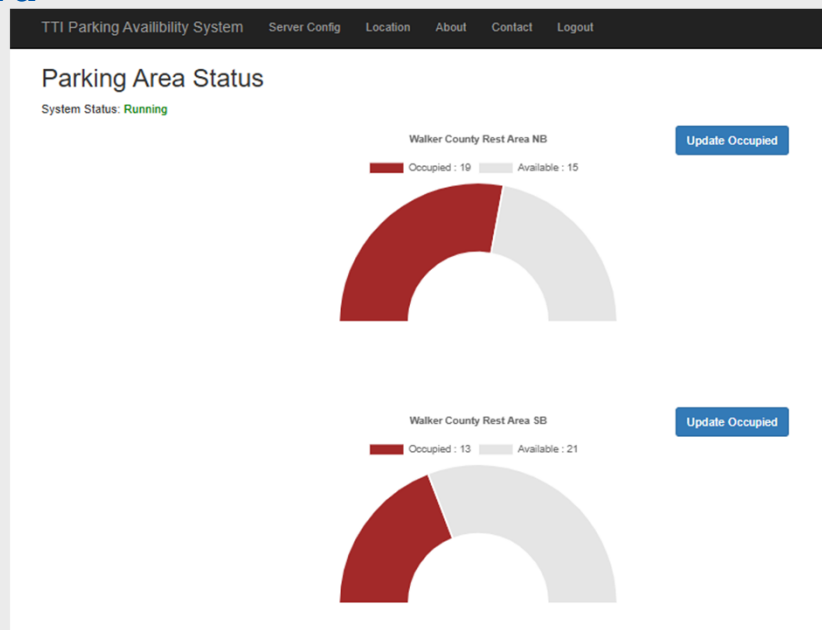
## Entry/Exit Truck Parking System

- Four temporary wooden poles (two each side)
- Solar power
- LiDAR Based Sensor
- Cellular modem communications



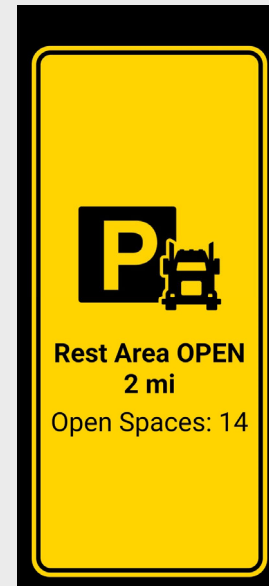
49

## Dashboard



50

## Truck Parking Messaging



51

## In-Ground Truck Parking System



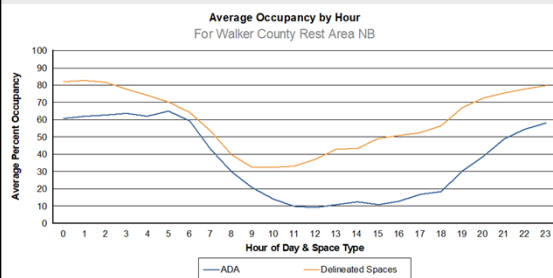
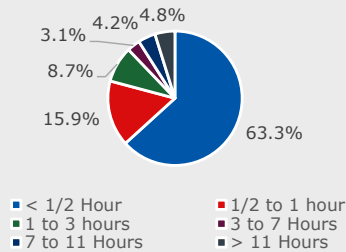
- 165 sensors northbound
- 195 sensors southbound
- Relay nodes/Cellular modem communications

52

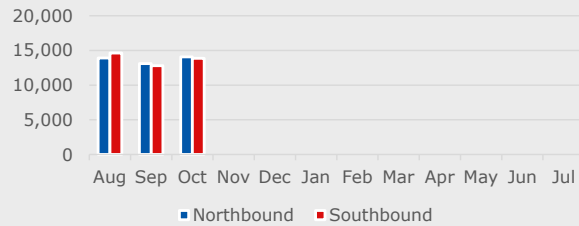


## Types of Data

### I-45 NB Truck Parking Duration



### Entry/Exit Vehicle Count (Monthly) August 2024-July 2025



	Hour																							
	0	1	2	3	4	5	6	7	8	9	10	11	12	13	14	15	16	17	18	19	20	21	22	23
Monday	15	16	18	18	18	21	20	16	14	12	14	15	15	20	20	24	20	21	25	30	31	30	30	31
Tuesday	32	33	32	31	29	29	27	22	16	13	15	14	19	20	21	16	18	18	22	27	27	30	31	32
Wednesday	33	33	33	32	29	28	27	24	16	14	15	15	15	19	20	23	21	22	22	30	30	32	32	33
Thursday	34	35	34	32	31	29	26	21	18	15	14	14	18	20	19	24	23	24	23	28	30	30	31	31
Friday	32	32	31	31	30	27	26	22	17	12	13	15	13	18	17	19	21	22	27	28	31	31	31	32
Saturday	32	31	32	31	31	31	27	22	17	14	12	12	11	11	10	9	10	8	6	7	9	10	12	13
Sunday	15	16	17	17	18	19	21	19	15	13	12	9	11	8	8	9	9	9	10	10	11	11	12	14

### NB Maximum Occupancy

	Hour																							
	0	1	2	3	4	5	6	7	8	9	10	11	12	13	14	15	16	17	18	19	20	21	22	23
Monday	40	41	40	40	39	35	33	27	18	11	10	13	16	15	17	19	27	29	32	35	37	39	41	42
Tuesday	43	43	43	41	38	37	33	28	18	15	12	13	15	17	19	18	23	26	28	32	35	37	40	41
Wednesday	41	40	40	40	37	34	32	27	23	15	14	13	18	18	16	20	26	28	30	31	35	39	40	41
Thursday	42	43	43	43	41	38	34	28	21	14	12	13	16	18	20	18	22	29	32	35	37	40	41	42
Friday	43	44	43	42	40	36	32	26	20	16	14	13	14	14	14	14	15	18	18	17	17	21	27	32
Saturday	34	35	36	37	34	33	31	25	18	13	11	11	10	11	9	9	10	10	11	11	12	13	14	17
Sunday	18	20	22	22	22	21	18	15	11	10	11	9	11	13	16	18	22	26	29	32	35	37	38	39

### SB Maximum Occupancy

3

## Reality of Truck Parking



## Reality of Truck Parking

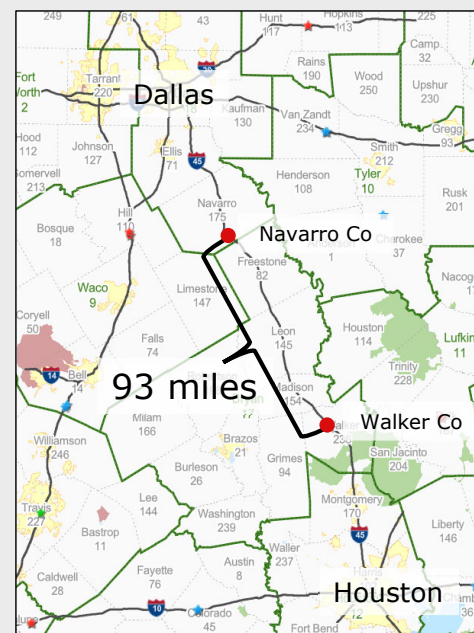
I-45 Rest Area Northbound - Exit Sat Jun 5 20:36:02 2021



9 Wind Turbine Blades in 34 Space Lot

## Expansion To Navarro County

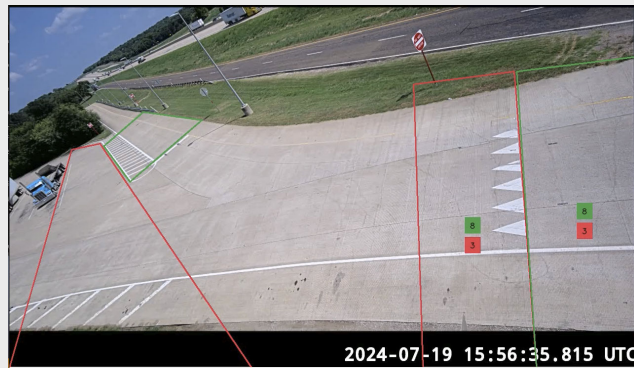
- TTI is waiting final approval to expand its Truck Parking Test Bed to the Navarro County NB/SB SRAs
- Provides the I-45 SRAs from Dallas to Houston with Truck Parking Information Systems
- Camera based detection system



56

## Additional Testing

- Using current infrastructure and the mobile test trailer, TTI can test additional sensors, cameras, and software in a live truck parking environment



57



## Questions?

**Tony Moritz**  
**Research Scientist, TTI**  
[T-moritz@tti.tamu.edu](mailto:T-moritz@tti.tamu.edu)





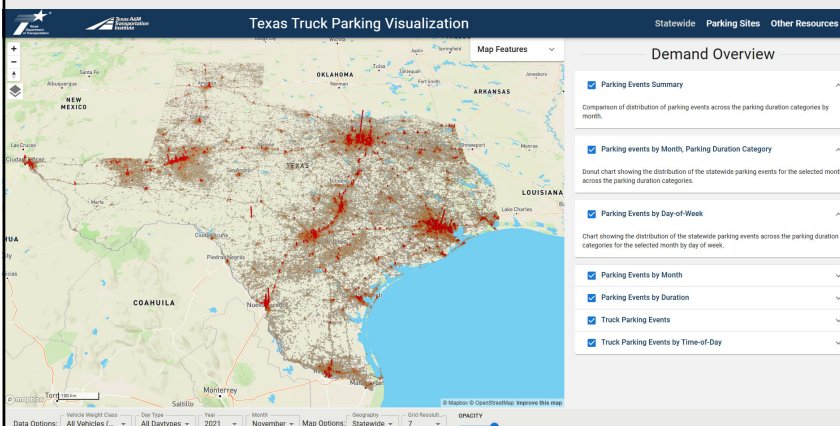
# Texas Truck Parking Visualization Tool

A planning-level look into truck parking demand and site utilization



Connecting you with Texas.

## What is the Truck Parking Visualization Tool?



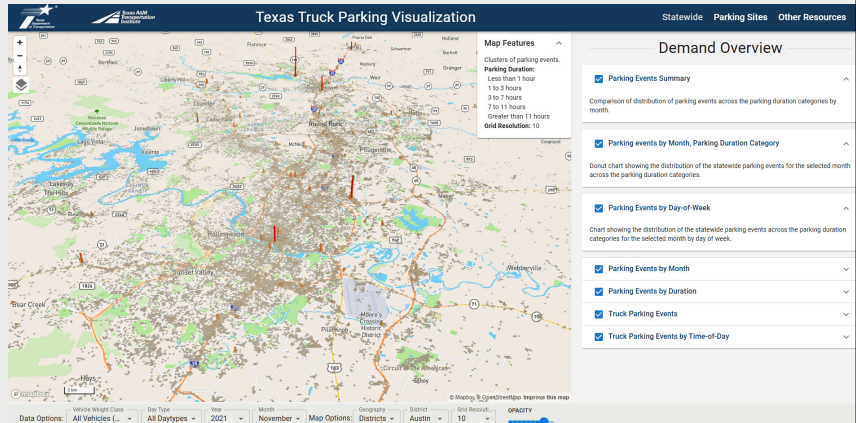
<https://trkparkingtx.tti.tamu.edu/>

- Planning tool for providing insights into truck parking
  - Statewide (Demand)
  - Specific Parking Sites (Utilization)
  - Repository for other resources/case studies
- Underlying Data
  - INRIX
    - Non-moving trips
    - Trajectory data
    - Waypoints
  - TxDOT Roadway Inventory Data (RIF)

60

## Statewide - Demand

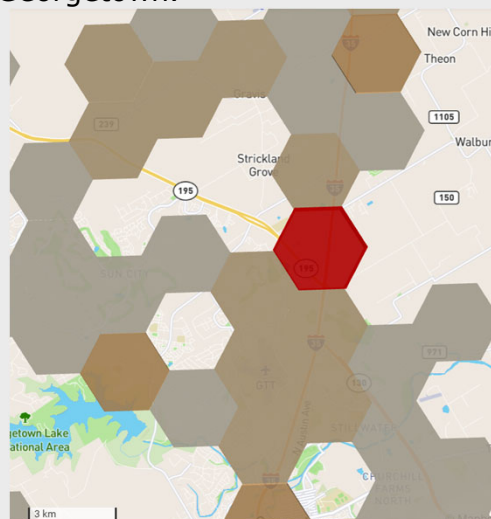
- Provides a look into demand – where are trucks parking.
- Multiple years/months/day types to establish trends.
- Various geographies (state, district, MPO, corridor).
- Different basemaps allow for visual analysis – what could be causing the dense number of truck trips.



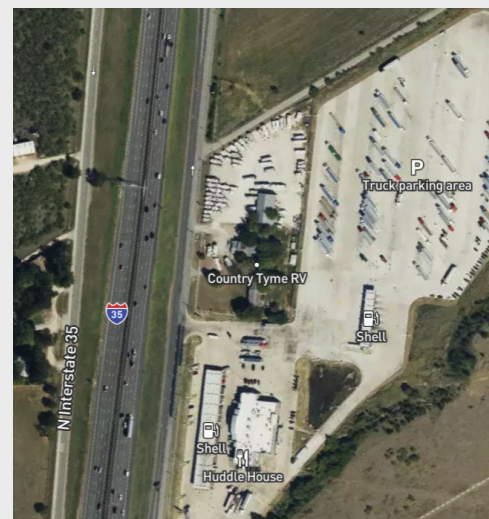
61

## Statewide - Demand

Area of dense parking along I-35 north of Georgetown.



Zooming in reveals a truck parking area, along with other potential truck attractors.



62

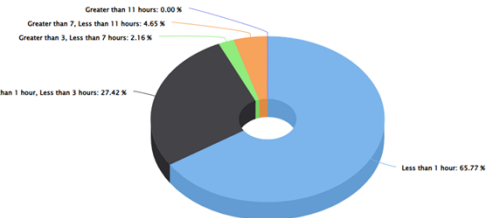
## Statewide - Demand

### Parking Events Summary

#### Parking Events

Month	% < 1 hour	% >= 1, < 3 hours	% >= 3, < 7 hours	% >= 7, < 11 hours	% >= 11 hours
February	66.74	24.79	6.76	1.71	0.00
March	71.57	22.72	4.71	1.91	0.00
April	66.56	21.79	4.04	7.62	0.00
September	70.57	27.82	0.49	1.22	0.00
October	69.46	28.67	0.70	1.17	0.00
November	68.21	29.86	0.66	1.27	0.00

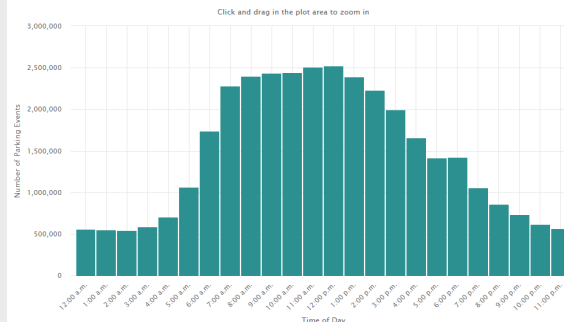
State Truck Parking Events By Duration  
November-2021, All Vehicles (Weight Class 2 and 3)



State Truck Parking Events By Day-of-Week  
November-2021, All Vehicles (Weight Class 2 and 3)



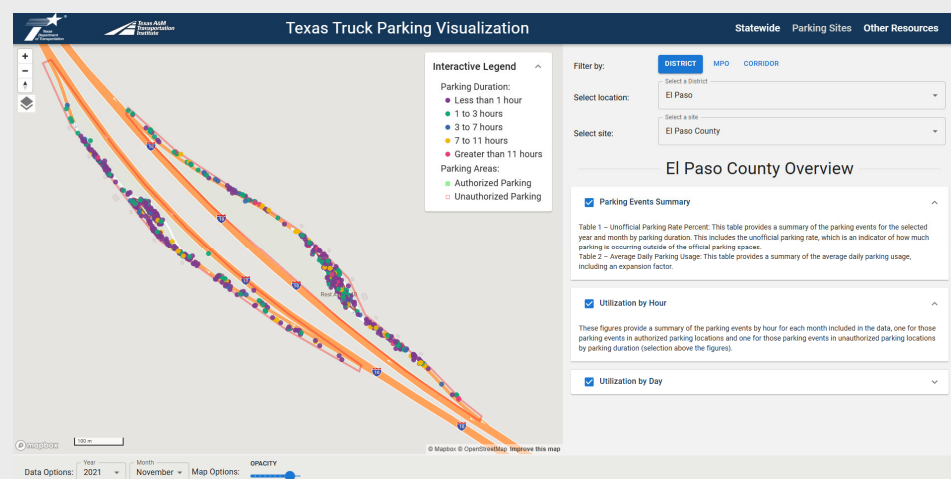
State Summary of Truck Parking Events  
November-2021, All Vehicles (Weight Class 2 and 3)



63

## Specific Parking Sites - Utilization

- Most public parking sites across the state.
- Visual analysis for examining parking durations and parking in unofficial parking areas such as ramps.
- Data provides insights into official/unofficial area parking, parking durations, utilization by hour and day.



64



## Utilization – Specific Parking Sites

Parking Events - El Paso County - 2021-November

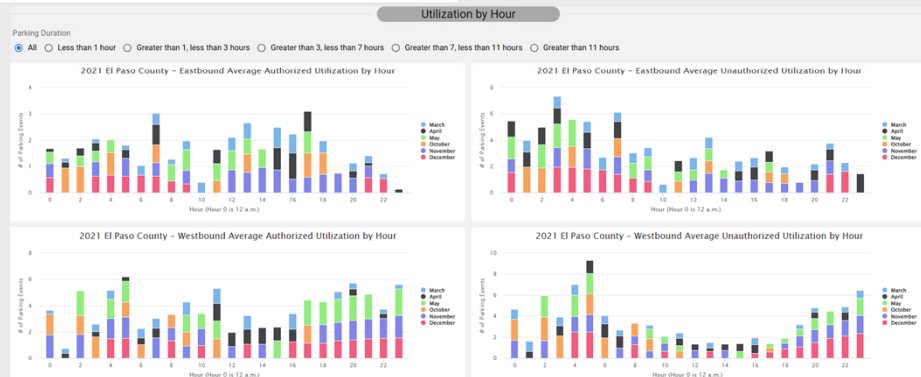
Parking Category	Total Count	Official Location Count	Unofficial Location Count	Official Rate (%)	Unofficial Rate (%)
less than 1 hour	604	272	332	45.0	55.0
1-3 hours	0	0	0	100.0	0.0
3-7 hours	37	12	25	32.4	67.6
7-11 hours	75	30	45	40.0	60.0
greater than 11 hours	0	0	0	100.0	0.0
Total	716	314	402	43.9	56.1

Expansion Factor

Site Name-Direction	Unexpanded Average Daily Total Count	Expansion Factor
El Paso County - Eastbound	14	0.12
El Paso County - Westbound	18	0.12


### Other metrics:

- Utilization by day.



65

## Other Resources/Case Studies


Texas Department of Transportation

Texas Truck Parking Visualization
Statewide Parking Sites Other Resources

Truck Parking at US-Mexico Border Ports Of Entry
This study uses the probe data provided by INRIX to analyze the truck parking issues in the El Paso region.


Disruptive Events
The purpose of these studies are to determine if there is a relationship between truck parking and a specific disruptive event.

Freight Generators
This study examines the first/last stops of trips leaving/entering the freight generator. Click here to load options.

### Truck Parking Issues at US-Mexico Border Ports Of Entry

This study uses the probe data provided by INRIX to analyze the truck parking issues in the El Paso region.

Sushant Sharma  
January 5, 2023



66

## Other Resources/Case Studies - Analysis of Freight Generators

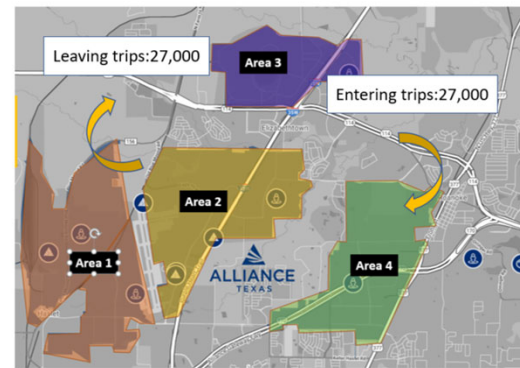
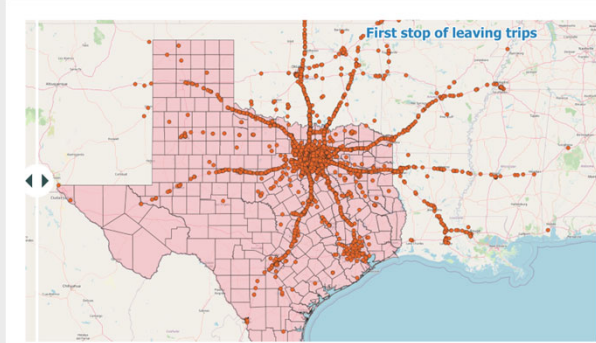
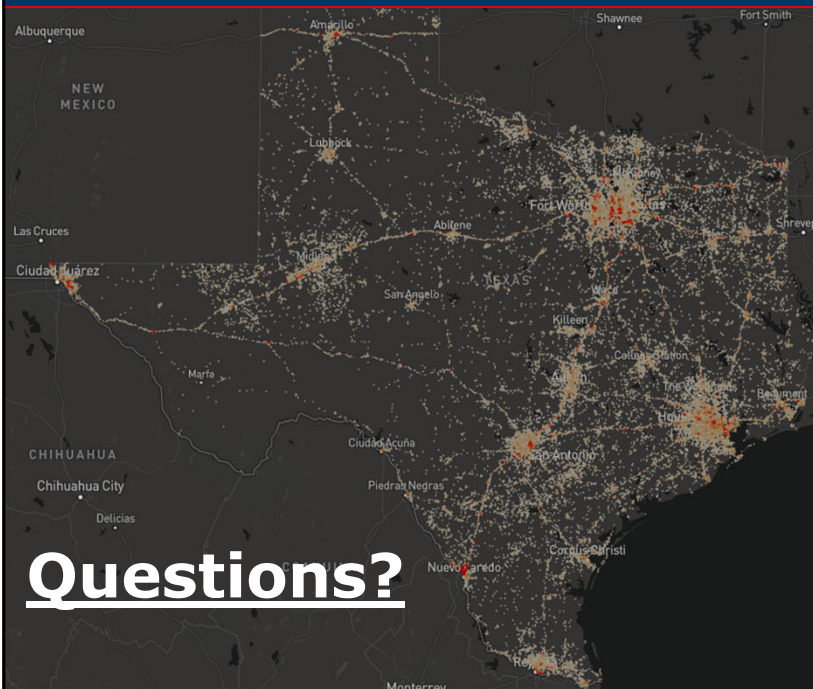


Fig 2. General information about trips captured in INRIX 2019 March data

67



- Texas Department of Transportation (TxDOT)
  - Tyler Graham ([tyler.graham1@txdot.gov](mailto:tyler.graham1@txdot.gov))
- Texas A&M Transportation Institute (TTI)
  - L.D. White ([l-white@tti.tamu.edu](mailto:l-white@tti.tamu.edu))
  - Brittney Gick ([b-gick@tti.tamu.edu](mailto:b-gick@tti.tamu.edu))
  - Jack Kong ([x-kong@tti.tamu.edu](mailto:x-kong@tti.tamu.edu))
- Link
  - <https://trkparkingtx.tti.tamu.edu/>

68



# MNT Division 10-year Truck Parking Plan

Truck Parking Workshop



December 4, 2024



Connecting you with Texas.

## 10-Year Implementation Plan

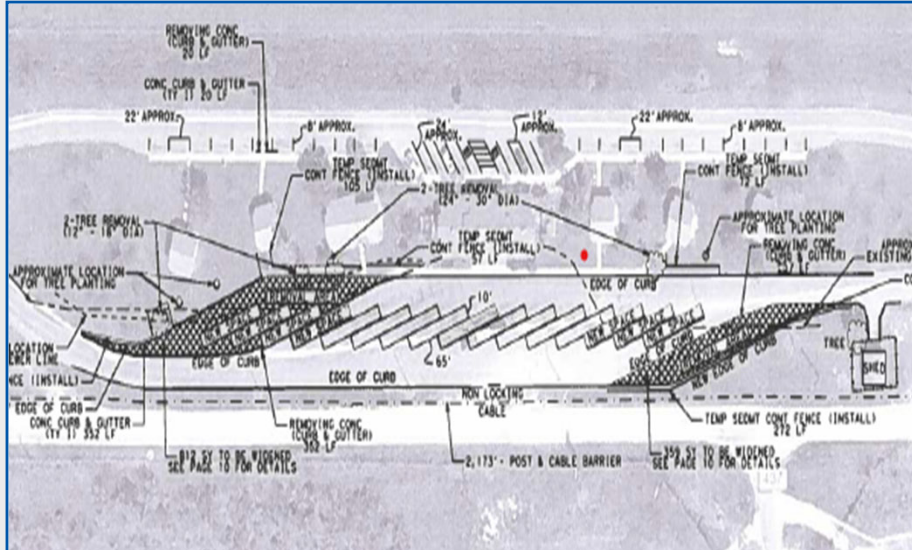
- Improve the current Safety Rest Area program
- Implement Districtwide truck parking projects
- Collectively the implementation plan includes analyzing:
  - Safety Data (fatigued-related accident and fatality data, AADT, distances, age of facilities)
  - Statewide and Regional Truck Parking Studies
  - District 4-Year Pavement Plans
  - Funding
- Project types include Safety Rest Areas, Truck Parking Only, and Truck Parking Expansion

70





## Statewide Truck Parking – Truck Parking Expansion Solution



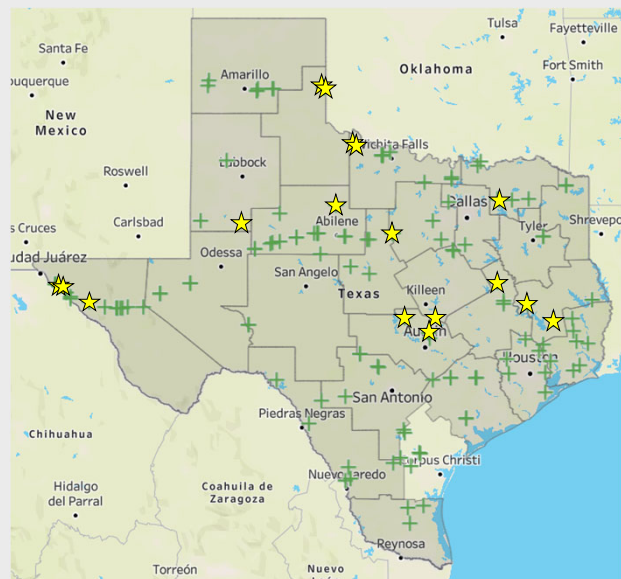
### Live Oak County SRA

- Corpus Christi District – IH37
- 12 truck parking spots added total

73

PROJECT TYPE	PROPOSED NO. OF PARKING SPACES	ENGINEER'S ESTIMATE / BID	COST / PARKING SPACE
SRA - NEW	79	\$9,602,500.00	<b>\$121,551</b>
SRA - ADD PARKING	584	\$44,354,337.20	<b>\$75,949</b>
TP ONLY - LET PROJ	1,254	\$91,294,095.00	<b>\$72,802</b>
TP ONLY - INHOUSE	1,741	\$109,715,726.16	<b>\$63,019</b>
<b>TOTALS</b>	<b>3,658</b>	<b>\$254,966,658.36</b>	

- 17 completed projects - 321 spaces
- 19 projects under construction - 595 spaces
- 7 projects in design - 593 spaces
- 161 total projects identified – estimated approx. 3,600+ spaces to be added



+ = Planned Project   ★ = Newly Completed

74



## 10-Year Implementation Plan

**Current Available Truck Parking Spaces – 1,409**



**Expected Available Truck Parking Spaces – 5,232**

75

**HELP**  
**#EndTheStreakTX**

End the streak of daily deaths on Texas roadways.

**TxDOT.gov**

#EndTheStreakTX Toolkit



76





## SH 130 Overview

### Background

- The SH 130 toll road is a 91-mile facility that serves as an alternative route to Interstate 35 through Central Texas.
- The first segment opened in 2006, with the final segments opening in late 2012.
- SH 130 Concession Company operates the southern 41 miles (Segments 5&6) under a long-term agreement with TxDOT.

### Heavy Freight Corridor

- Since 2019, commercial truck traffic has surged by 108% on the southern segments of the roadway.
- Recent major developments on or near the roadway include the Tesla Gigafactory, \$17B+ Samsung manufacturing facility in Hutto, and 10M+ SF of industrial and commercial distribution facilities.
- Despite recent growth, the southern segments of SH 130 still have ~80% unutilized capacity throughout the day, including ample excess capacity during the peak travel periods.



State Highway 130 78

## USDOT RAISE Grant

### Background

- The lack of truck parking along the roadway has been a safety issue since it opened, with only one Pilot station located along the facility.
- The lack of amenities consistently comes up in surveys as a reason drivers don't choose the roadway as an alternative to I-35.
- Caldwell County and SH 130 first applied for a 2022 RAISE grant and were successful in a reapplication during the 2023 cycle.

### Project Features

- 100 long-term and 20 short-term truck parking spaces
- Entry/Exit gate control
- Lighting and fencing
- Restrooms and shower facilities
- 24-hr monitored security
- Mobile app/website to check availability

### SH 130 ADVANCED COMMERCIAL TRUCK TRAVEL PLAZA

CALDWELL COUNTY

CALDWELL COUNTY, TX: TEXAS

CAPITAL

RURAL

AREA OF PERSISTENT POVERTY

HISTORICALLY DISADVANTAGED COMMUNITY

RAISE GRANT FUNDING: \$22,942,500



State Highway 130 79

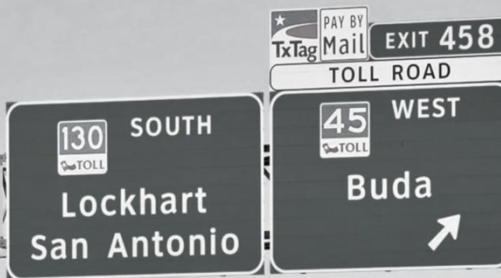
## Thank you!

**James Lovett**

Vice President, Public Affairs  
SH 130 Concession Company

[jlovett@sh130cc.com](mailto:jlovett@sh130cc.com)

512-618-4986



## Questions



81

Thank you for attending

QR link to TxDOT Truck Parking website



- Contact Information

- TxDOT Project Manager

Kale Driemeier  
[kale.driemeier@txdot.gov](mailto:kale.driemeier@txdot.gov)

- HNTB Consultant Project Manager

Brian Comer, AICP  
[bcomer@hntb.com](mailto:bcomer@hntb.com)

- TTI Program Manager

Allan Rutter  
[a-rutter@tti.tamu.edu](mailto:a-rutter@tti.tamu.edu)

82