



I-27 Advisory Committee (S.B. 1474 amended with H.B. 2775)

Meeting #9
Midland, Texas



September 4, 2025



September 4, 2025

Welcome and Opening Remarks



Honorable Curtis Parish, Judge, Lubbock County, I-27 Advisory Committee Vice-Chair



Alvin New, Commissioner, Texas Transportation Commission



Alejandro "Alex" G. Meade III, Commissioner, Texas Transportation Commission



September 4, 2025

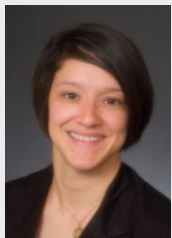
Introduce New Members

By Honorable Curtis Parrish, Judge, Lubbock County, I-27 Advisory Committee Vice-Chair

Introduce New Members



- **San Angelo** – Honorable Tom Thompson, Mayor



- **Segment 2 Economic Professional** – Victoria Vara,
Executive Director, Sonora Economic Development Corporation

HB 2775: I-27 Advisory Committee Expansion

- House Bill 2775 amends the I-27 Advisory Committee membership from 23 to 26 by adding one representative each from **Schleicher County** and **Ector County**, and one representative from the **City of Odessa**.
- The House Bill was sent to Governor Greg Abbot for Signature on May 26, 2025 with an effective date of September 1, 2025.



**Mayor
Cal Henrick
City of Odessa**



**County Judge
Dustin Fawcett
Ector County**



**County Judge
Charlie Bradley
Schleicher County**



September 4, 2025

Roll Call and Safety Minute

Lorena Echeverria de Misi, P.E.

Corridor Planning Branch Manager, Transportation Planning and Programming Division, TxDOT

Roll Call



Committee Chair
TBD



Committee Vice-Chair
Curtis Parrish
Lubbock County



Mayor
Alvaro "Al"
Arreola
City of Del Rio



Mayor
Lori Blong
City of Midland



Mayor
Cal Henrick
City of Odessa



Mayor
Mark McBrayer
City of Lubbock



Mayor
Robert Moore
City of Big Spring



Mayor
Cole Stanley
City of Amarillo



Mayor
Tom Thompson
City of San Angelo



Mayor
Dr. Victor D.
Trevino
City of Laredo



Commissioner
Rick Bacon
Tom Green
County



County Judge
Charlie Bradley
Schleicher
County



County Judge
Dustin Fawcett
Ector County



County Judge
Randy Johnson
Howard County



County Judge
Terry Johnson
Midland County



County Judge
Alicia Law
Sherman County



County Judge
Lewis Owens
Val Verde County



County Judge
Rowdy Rhoades
Moore County



County Judge
Wes Ritchey
Dallam County



County Judge
Nancy Tanner
Potter County



County Judge
Tano E. Tijerina
Webb County



President & CEO
John Osborne
Segment 1: Lubbock
Economic Development
Alliance



Executive Director
Victoria Vara
Segment 2:
Sonora Economic
Development Corporation



Economic
Development
Segment 3:
Vacant



President & CEO
Tracee Bentley
Permian Strategic
Partnership



Executive Vice President
Gerry Schwebel
International Bank of
Commerce



Board Member,
County Commissioner
Dee Vaughan
Texas Corn Producers

TxDOT District Leadership



Blair Johnson, P.E.
District Engineer
Amarillo District



Steven Warren, P.E.
District Engineer
Lubbock District



Kylan Francis, P.E.
Deputy District Engineer
Lubbock District



Jeremy Dearing, P.E.
District Engineer
Abilene District



Eric Lykins, P.E.
District Engineer
Odessa District



Chris Cowen, P.E.
District Engineer
San Angelo District



Epigmenio Gonzalez, P.E.
District Engineer
Laredo District



Kit Black, P.E.
Director of TP&D
Amarillo District



Shelley Harris, P.E.
Director of TP&D
Lubbock District



Vacant
Director of TP&D
Abilene District



Robert Ornelas, P.E.
Director of TP&D
Odessa District



Russell Pehl, P.E.
Director of TP&D
San Angelo District

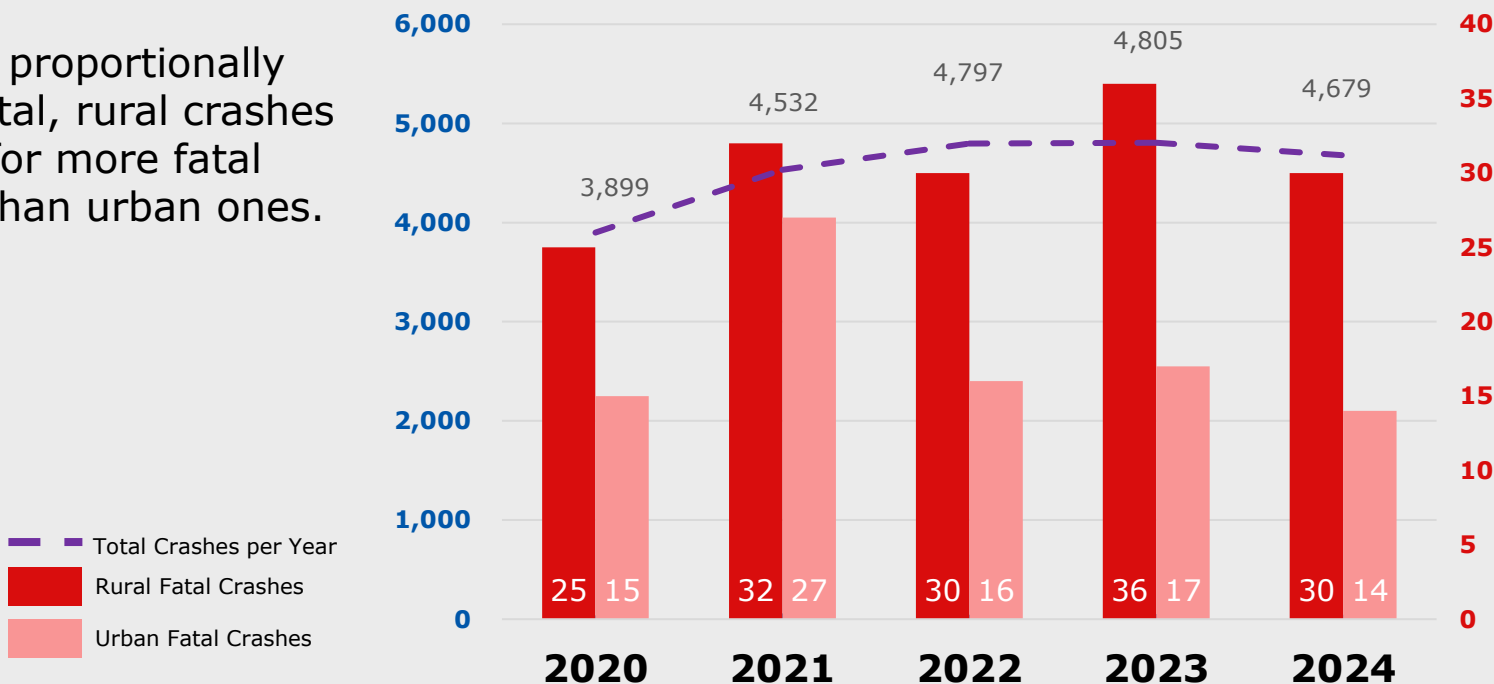


Roberto Rodriguez, P.E.
Director of TP&D
Laredo District

Safety Minute

Rural vs. Urban Crashes along the I-27 Corridor

Although proportionally less in total, rural crashes account for more fatal crashes than urban ones.



Presentation Outline

- 1** | Election of New Chair, Vice Chair, and Economic Professional Member
- 2** | Roundtable: Member Updates and State of the I-27 Corridor
- 3** | Review of Legislation Related to I-27
- 4** | I-27 Implementation Plan Summary of Progress and What's Next for the I-27 Designation
- 5** | I-27 Implementation Plan Project Updates
- 6** | Metropolitan Planning Organization (MPO) Update



September 4, 2025

Election of New Chair and Vice Chair

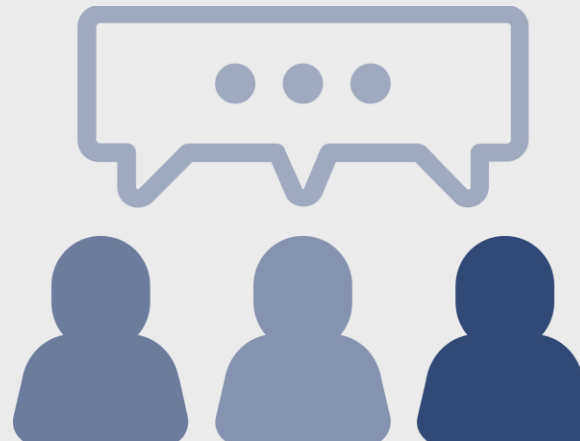
Election of Economic Professional Member

Honorable Curtis Parrish, Judge, Lubbock County, I-27 Advisory Committee Vice-Chair

I-27 Advisory Committee Purpose

The I-27 Advisory Committee is established to:

- **Provide** the department with information on **concerns and interests** along the Ports-to-Plains Corridor; and
- **Advise** the department on **transportation improvements** impacting the Ports-to-Plains Corridor.



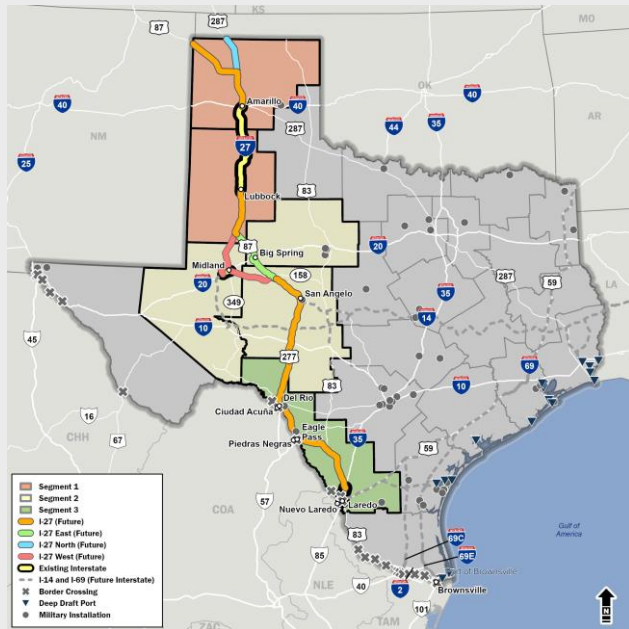
I-27 Advisory Committee: Elect Chair and Vice-Chair

- The advisory committee shall elect by majority vote:
 - **A chair** to serve as the committee's presiding officer
 - **A vice-chair** to serve as the committee's presiding officer in the absence of the chair
- The advisory committee shall meet at least twice each state fiscal year and at such other times as requested by department or the chair
- The advisory committee may meet remotely or by teleconference as determined by the chair or the department

I-27 Advisory Committee: Elect Economic Professional

The mayors on the advisory committee shall appoint the following members by majority vote:

1 member who are **economic development professionals**, to be selected based on geographic segments that were established for the feasibility study



Source: 2021 Ports-to-Plains Feasibility Study



Segment 1: John Osborne, Lubbock Economic Development Alliance



Segment 2: Victoria Vara, Sonora Economic Development Alliance



Mayors to nominate **Segment 3** Economic Development professional



September 4, 2025

Roundtable: Member Updates and State of I-27 Corridor

I-27 Advisory Committee Members

Roundtable

I-27 Advisory Committee
Members Share
What's Energizing them in
their Regions about I-27



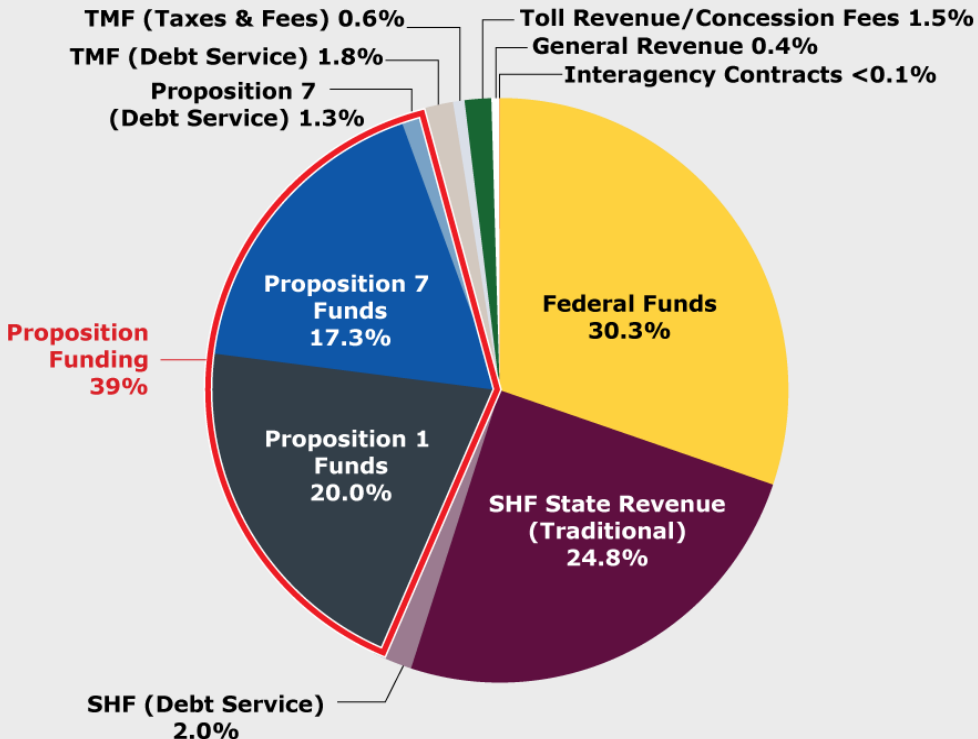


September 4, 2025

89th Regular Legislative Session Overview (2025)

Wesley Starnes, State Legislative Affairs Liaison, Government Affairs Division, TxDOT

Budget Sources: Senate Bill 1

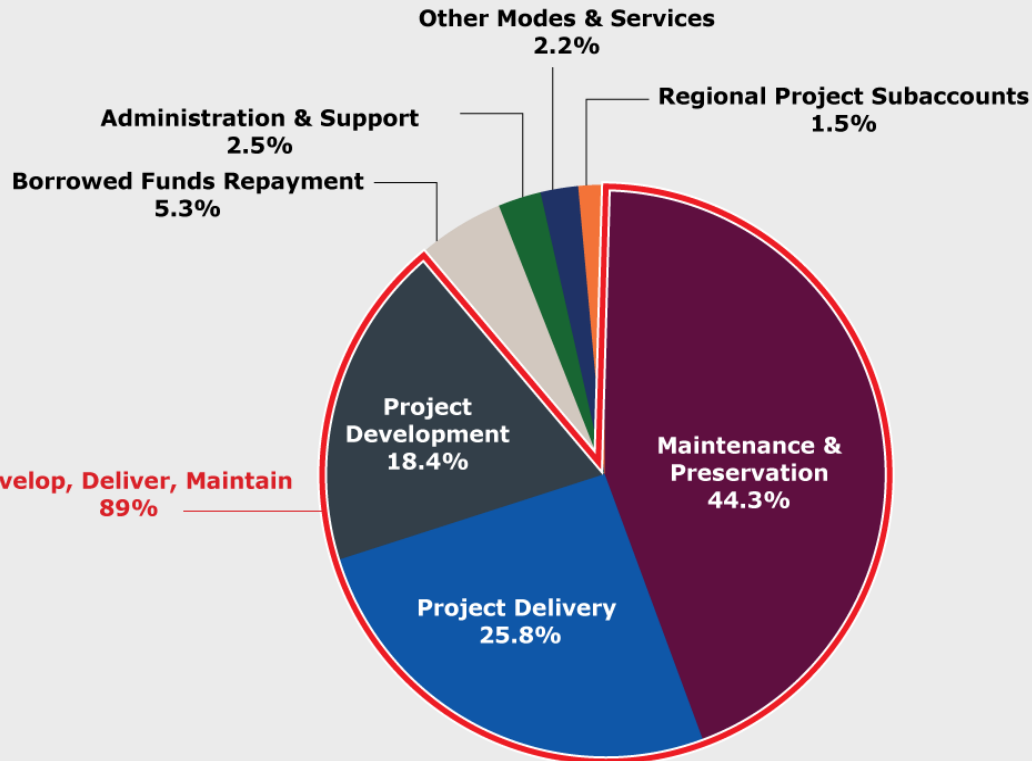


BUDGET SOURCES

Federal Funds	\$12.07 billion
SHF (Traditional)	\$9.88 billion
SHF (Debt Service)	\$0.80 billion
Proposition 1 Funds	\$8.00 billion
Proposition 7 Funds	\$6.92 billion
Proposition 7 (Debt Service)	\$0.50 billion
TMF (Debt Service)	\$0.72 billion
TMF (Taxes & Fees)	\$0.25 billion
Toll Revenue/Concession Fees	\$0.59 billion
General Revenue	\$0.18 billion
Interagency Contracts	\$0.01 billion
Total	\$39.92 billion

*Totals and percentages may not sum due to rounding

Budget Uses: Senate Bill 1



BUDGET USES

	Maintenance & Preservation	\$17.66 billion
	Project Delivery	\$10.34 billion
	Project Development	\$7.36 billion
	Borrowed Funds Repayment	\$2.13 billion
	Administration & Support	\$0.98 billion
	Other Modes & Services	\$0.86 billion
	Regional Project Subaccounts	\$0.59 billion
	Total	\$39.92 billion

*Totals and percentages may not sum due to rounding

Budget Overview: Senate Bill 1 & House Bill 500

SB 1 (General Appropriations Act)

TxDOT budget **\$39.92 billion**

- **\$35.37 billion (89%)** for the development, delivery, and maintenance of state highways
- **\$860 million** in multi-modal projects and services— rail, maritime, aviation, and public transportation
- Over **\$900 million** in capital budget items— buildings, facilities, land, information technology (IT)
- Nearly **\$180 million** in general revenue funding for various specified roadway, pedestrian, rail, and aviation projects



HB 500 (Supplemental Appropriations Bill)

\$504.1 million appropriated to TxDOT

- **\$250 million** in pedestrian and roadway rail grade separation grant funding
- **\$129 million** in aviation grant funding
- **\$105 million** in capital budget items—TxDOT vehicle fleet, aircraft, and aviation facilities
- **\$20 million** for specified roadway project



Legislative Highlights



HB 4520 - Representative M. Martinez/Senator Nichols

Relating to requirements for certain funding of aviation facilities and projects.

- Lowers the required local match (**from 10% to 5%**) for General Aviation Airports located in an economically disadvantaged county (EDC).
- Impacts 130 General Aviation Airports located in 100 economically disadvantaged counties.

HB 2775 - Representative Landgraf/Senator Sparks

Relating to the composition of the I-27 Advisory Committee.

- Expands the membership of the TxDOT-administered I-27 Advisory Committee—created in 87th Legislature, Regular Session (2021).
- Adds one member each from Schleicher and Ector Counties and the City of Odessa.



Legislative Highlights

SB 1555 - Senator Nichols/Representative Patterson

Relating to a grant program to fund certain railroad grade separation projects.



- Creates a TxDOT administered grant program for local government pedestrian and roadway rail grade separation projects (off-system)—funded with **\$250 million** in HB 500 (89R, 2025).
- Requires at least 10% of the project be funded with non-state dollars.
- Projects must increase public safety, enhance economic development, and reduce traffic.

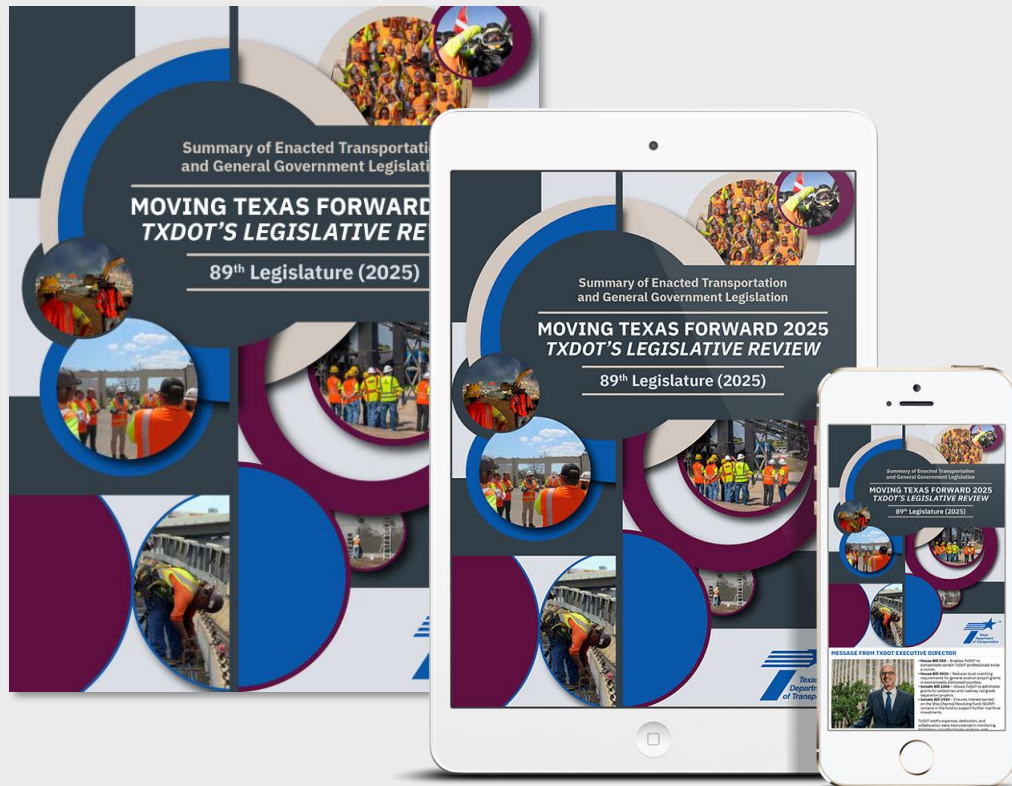
SB 2366 - Senator Hughes/Representative Hefner

Relating to a grant program to fund short line railroad projects.



- Creates a TxDOT administered grant program for rural rail transportation district short line rail projects—the program was **not funded**.
- Requires at least 10% of the project be funded with non-state dollars.
- Projects must increase public safety, enhance economic development, and reduce traffic.

89th Regular Legislative Session (2025) TxDOT Overview



Moving Texas Forward *Summary of Enacted Transportation and General Government Legislation*



HELP MAKE TEXAS SAFER FOR EVERYONE

DRIVE *like a* TEXAN™

Kind. Courteous. Safe.

[DriveLikeATexan.com](https://www.drive-like-a-texan.com)





September 4, 2025

I-27 Implementation Plan Summary of Progress and What's Next for the I-27 Designation

Lorena Echeverria de Misi, P.E.

Corridor Planning Branch Manager, Transportation Planning and Programming Division, TxDOT

I-27 Implementation Plan

Investments to Upgrade to Interstate Standards

Corridor View

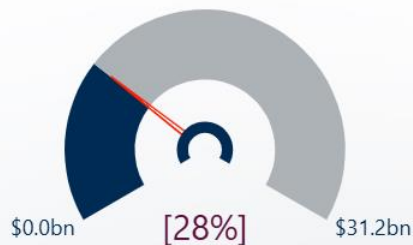
District View

Tabloid View

Project Viewer



I-27 Implementation Plan Status



% Funded of 2024 IMP Plan Estimated Cost

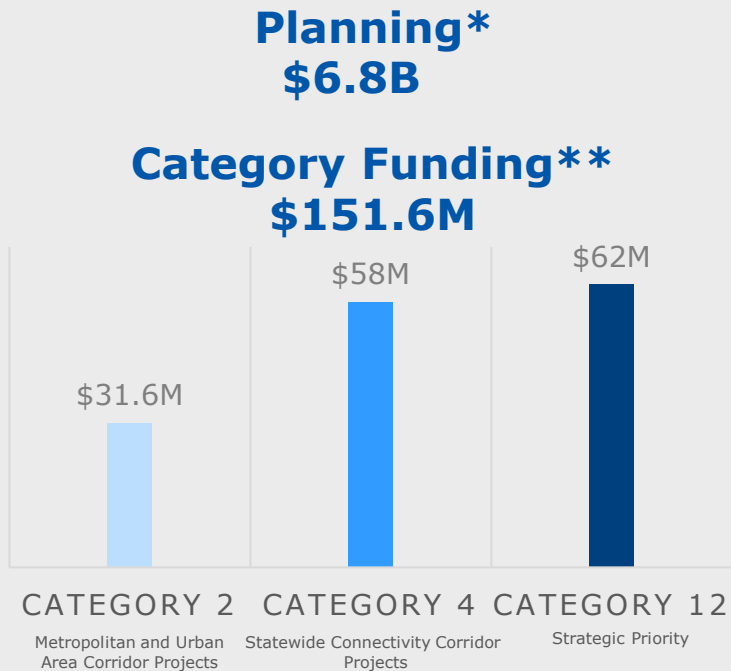
Status	Est. Construction Cost	Projects
Unfunded/Partially Funded	\$8,703,248,773	34
Fully Funded	\$113,698,316	3
Total	\$8,816,947,089	37

\$31.2 Billion
Implementation Plan Estimated Cost - Circa 2024



I-27 System in Texas:

Overall Investments to Upgrade toward Interstate Standards



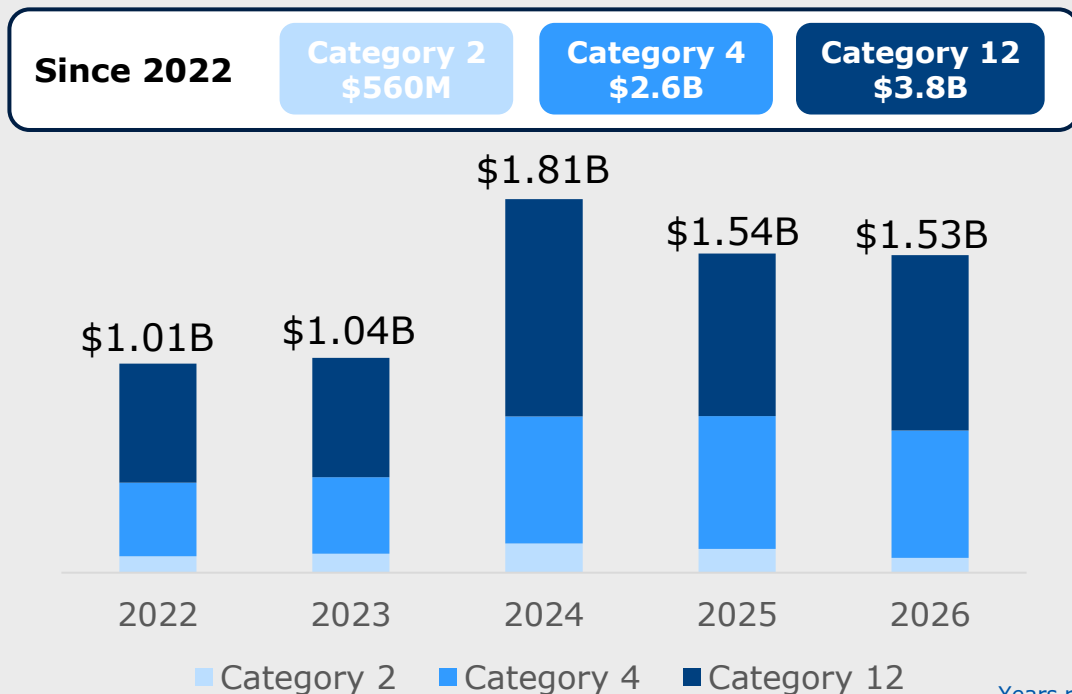
Total
\$7B

*Funding approved for projects being planned and developed in long-range plans outside of UTP 10-year window (PLAN Authority)

**Funding approved for construction in the UTP 10-year window (CAT 1 – CAT 12)

I-27 Corridor:

Historical UTP Investments – Category Funding for I-27 Corridor (2022-2026)




I-27 Corridor: Total Estimated Construction Cost for Added Capacity Projects


District	Completed Projects	Projects Under Construction*	Fully Funded	Unfunded/ Partially Funded
Laredo	-	-	\$785M	-
San Angelo	-	-	\$3.9M	-
Odessa	-	\$368.1M	\$236.5M	\$767.6M
Abilene	-	-	\$17.9M	-
Lubbock	-	-	\$317M	\$20.1M
Amarillo	-	\$424.7M	\$361.6M	\$864.4M
TOTAL (billions)	-	\$793M	\$1.7B	\$1.7B

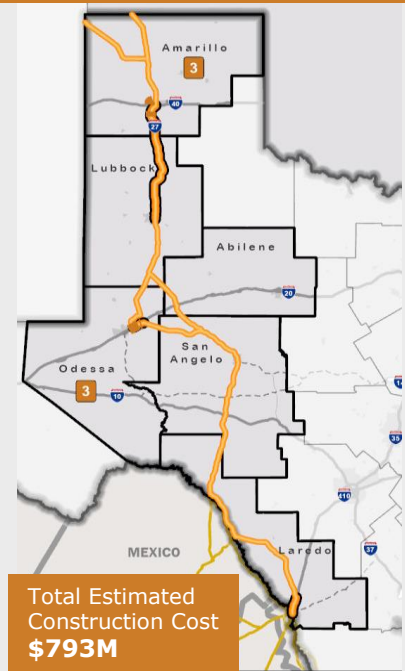
*Projects let after March 2022 (FY 2022 Omnibus Appropriations Bill), unless included in the I-27 Implementation Plan

I-27 Corridor: Total Number of Added Capacity Projects

 **6 PROJECTS UNDER CONSTRUCTION** 28.6 miles

 **14 FUNDED PROJECTS IN THE 2026 UTP** 46.2 miles

 **12 POTENTIAL FUTURE PROJECTS (Unfunded/Partially Funded)** 87.6* miles

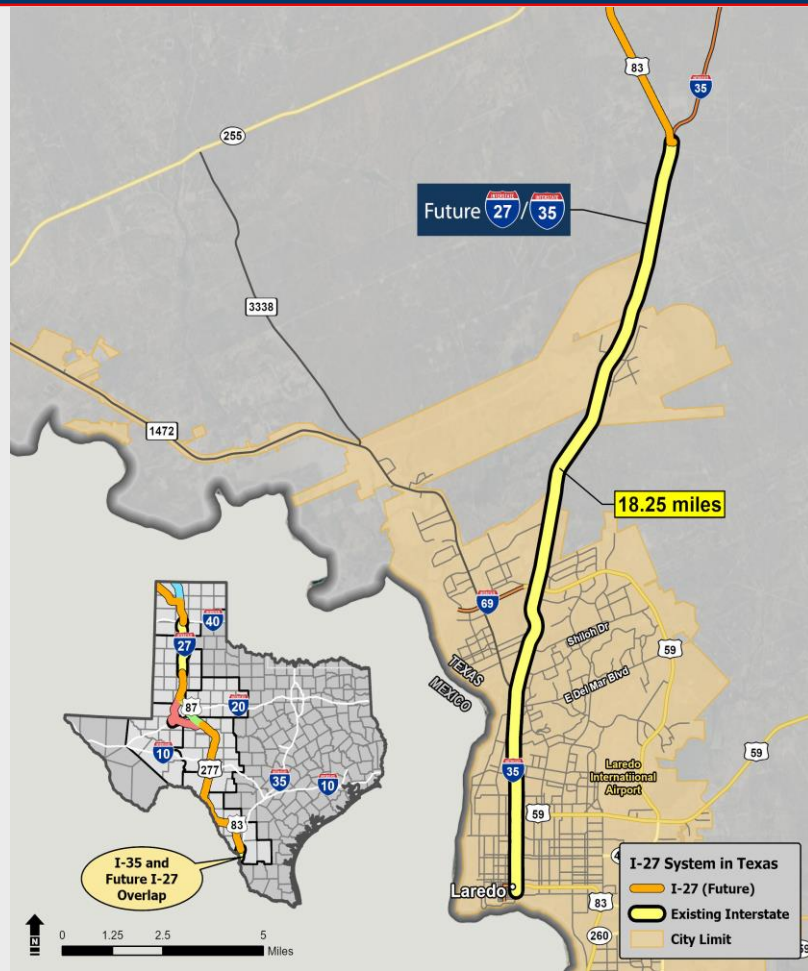


*Mileage is an estimate. Some projects are new location and do not have exact limits.

What's Next for I-27 Designation?



- TxDOT is currently seeking dual designation for I-27/I-35 in Laredo
- 18.25 miles from the Mexico border and the US 83/I-35 split
- Currently reviewing as-builts and technical reports
- This section corresponds to the Statewide Corridor Ranking #1 based on the I-27 Implementation Plan





September 4, 2025

I-27 Implementation Plan Summary of Progress: Total Investments

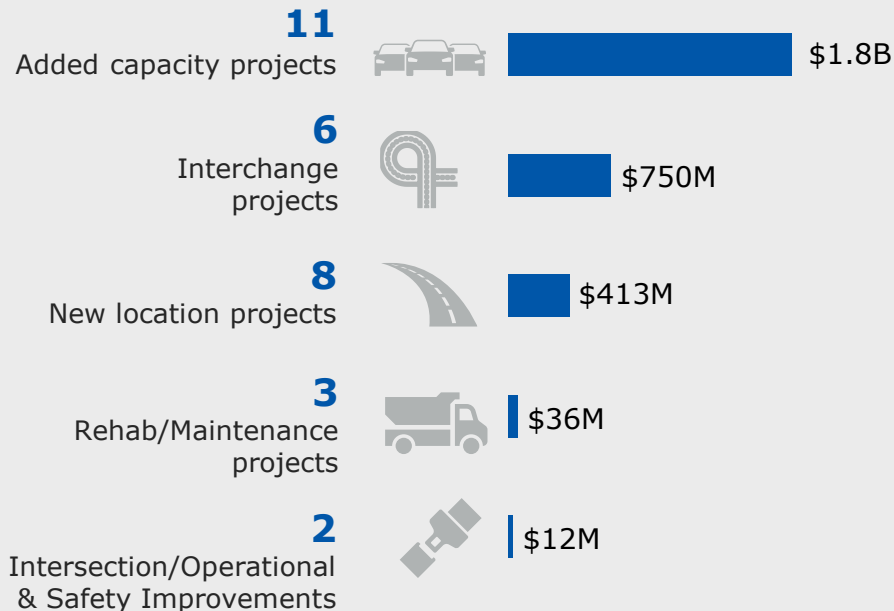
Lorena Echeverria de Misi, P.E.

Corridor Planning Branch Manager, Transportation Planning and Programming Division, TxDOT

I-27 Corridor Investments: All 2026 UTP Projects

30
Ongoing Projects
(within UTP 10-year
window)

\$3B
Estimated Construction
Cost*



*Including Construction Funding (CAT 1- CAT 12)

Source: Adopted UTP, August 2025



September 4, 2025

I-27 Implementation Plan Project Updates

Epigmenio Gonzalez, P.E., Laredo District Engineer

Chris Cowen, P.E., San Angelo District Engineer

Eric Lykins, P.E., Odessa District Engineer

Jeremy Dearing, P.E., Abilene District Engineer

Steven Warren, P.E., Lubbock District Engineer

Blair Johnson, P.E., Amarillo District Engineer

Laredo District

DISTRICTSTATE SENATESTATE HOUSEHIGHWAYPROJECT STAGEFUNDING STATUSCSJ

LaredoAllAllAllAllAll

Corridor ViewDistrict ViewTabloid ViewProject Viewer

San Angelo

Del Rio

Piedras Blancas

Nuevo Laredo

Monclova

Edinburg

50 mi

Icon Map Pro | © Tekantis © OpenMapTiles © OpenStreetMap contributors

=Under Construction

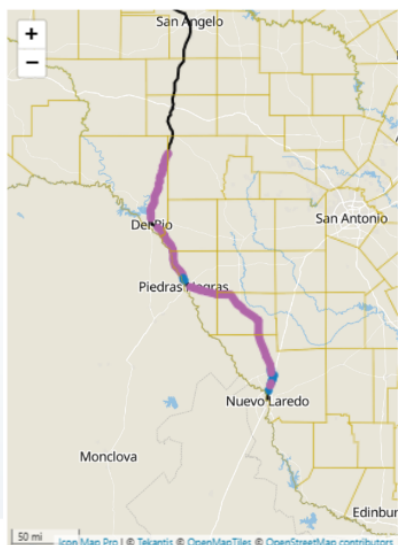
=Fully Funded

=Partial/Unfunded

=Future Interstates

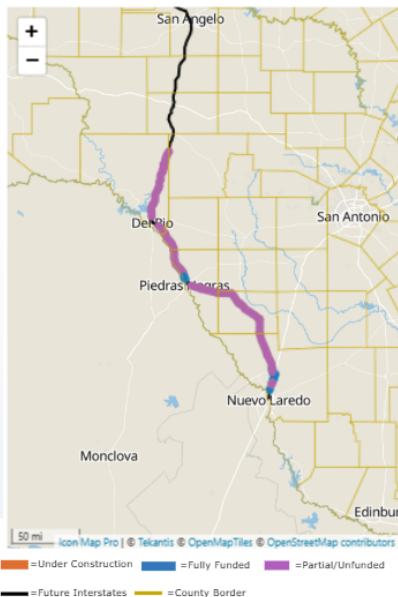
=County Border

Control Section Job	Interstate Standard	Highway	District	Limits	Description	Stage	Let Year	Miles	Est. Construction Cost	CAT Funding	Functionality
0018-05-089		IH 35	Laredo	0.47 MI S OF UNIROYAL INTERCHANGE To 3.22 MI N OF UNIROYAL INTERCHANGE	IH-35 RECONSTRUCTION & INTERCHANGES(RECONSTRUCTED/NEW)@UNIROYAL DR & SH 84	PS&E	2026	3.70	\$299,600,297	\$309,285,350	
0018-05-094		IH 35	Laredo	2.68 MI N OF UNIROYAL INT(MM 16.0) To 1.2 MI N OF US 83 INT(MM 19.787)	WIDEN FREEWAY FROM 4-LANE TO 6-LANE WITH OVERPASS AT UPRR & DIRECT CONNECTOR TO US 83	PS&E	2029	3.78	\$319,302,853	\$270,752,005	
0018-05-098		IH 35	Laredo	1.353 MILES SOUTH OF CARRIERS RD To UNIROYAL INTERCHANGE	WIDEN OF CARRIERS DRIVE BRIDGE ON IH 35	PE	2033	1.90	\$5,262,000		
0018-06-185		IH 35	Laredo	0.187 MI SOUTH OF IH 35/US 59 INT. To 0.205 MI NORTH OF IH 35/US 59 INT.	NEW DIRECT CONNECTORS (#3, #4 AND #6) NORTHBOUND AND SOUTHBOUND IH35 TO US59 EB	PS&E	2026	0.40	\$102,191,980	\$93,505,335	
0037-06-109	YES	US 83	Laredo	10 MILES NORTH OF WEBB/DIMMIT CL To CITY OF CARRIZO SPRINGS	WIDEN EXISTING ROADWAY TO 4-LANE DIVIDED AND CITY OF ASHERTON RELIEF ROUTE (PORTS-TO-PLAINS)	P	2035	19.01	\$334,100,303		\$3
0037-08-045	YES	US 83	Laredo	WEBB/DIMMIT COUNTY LINE To 10 MILES NORTH OF WEBB/DIMMIT	WIDEN EXISTING ROADWAY TO 4-LANE DIVIDED AND CITY OF CATARINA RELIEF ROUTE (PORTS-TO-PLAINS)	P	2035	10.66	\$187,447,854		\$1
Total									\$4,799,046,669	\$793,609,910	\$3,94



Laredo District

DISTRICT	STATE SENATE	STATE HOUSE	HIGHWAY	PROJECT STAGE	FUNDING STATUS	CSJ							
Laredo	All	All	All	All	All	All							
							Corridor View	District View	Tabloid View	Project Viewer			
Control Section Job	Interstate Standard	Highway	District	Limits	Description	Stage	Let Year	Miles	Est. Construction Cost	CAT Funding	Fund		
0037-09-035	YES	US 83	Laredo	3.6 MILES SOUTH OF SH 44 INTERSECTION To WEBB/DIMMIT COUNTY LINE	WIDEN EXISTING ROADWAY TO 4-LANE DIVIDED (PORTS-TO-PLAINS)	P	2035	16.58	\$290,139,736		\$2		
0037-10-040	YES	US 83	Laredo	1 MI NORTH OF SH 255 To Los Botines Ln	WIDEN EXISTING ROADWAY TO 4-LANE DIVIDED (PORTS-TO-PLAINS)	PS&E	2029	4.29	\$53,570,160	\$50,400,001			
0037-10-041		US 83	Laredo	LOS BOTINES LN To US83 / IH35 UNDERPASS	WIDEN EXISTING ROADWAY FROM 2 LANE TO 4 LANE DIVIDED HWY	PS&E	2029	1.43	\$41,299,773	\$37,282,140			
0037-10-044	YES	US 83	Laredo	1.5 MILES SOUTH OF SH 255 INTERSECTION To 3.6 MILES SOUTH OF SH 44 INTERSECTION	WIDEN EXISTING ROADWAY TO 4-LANE DIVIDED WITH INTERCHANGE UPGRADE AT US 83/ SH 255 (PORTS-TO-PLAINS)	PE	2032	13.03	\$197,696,415		\$1		
0160-04-052	YES	US 277	Laredo	16.1 MILES NORTH OF US 377 To VAL VERDE/EDWARDS COUNTY LINE	WIDEN EXISTING ROADWAY TO 4-LANE DIVIDED (PORTS-TO-PLAINS)	P	2035	12.48	\$219,802,827		\$2		
0160-05-051	YES	US 277	Laredo	US 377 To 16.1 MILES NORTH OF US 377	WIDEN EXISTING ROADWAY TO 4-LANE DIVIDED (PORTS-TO-PLAINS)	P	2035	16.06	\$283,106,041		\$2		
0160-06-036	YES	US 277	Laredo	9.3 MI NORTH OF US90 SOUTH INTERSECTION To US 377	WIDEN EXISTING ROADWAY TO 4-LANE DIVIDED (PORTS-TO-PLAINS)	P	2035	12.67	\$223,319,672		\$2		
Total									\$4,799,046,669	\$793,609,910	\$3,94		



Laredo District

DISTRICTSTATE SENATESTATE HOUSEHIGHWAYPROJECT STAGEFUNDING STATUSCSJ

LaredoAllAllAllAllAllAll

Corridor ViewDistrict ViewTabloid ViewProject Viewer

San Angelo

Del Rio

Piedras Blancas

Nuevo Laredo

Monclova

Edinburg

San Antonio

50 mi

Icon Map Pro | © TeleAntis © OpenMapTiles © OpenStreetMap contributors

=Under Construction

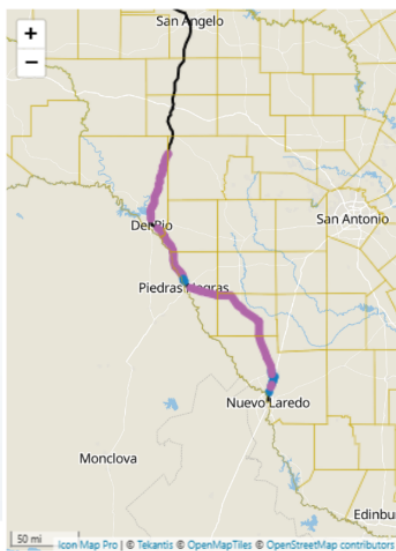
=Fully Funded

=Partial/Unfunded

=Future Interstates

=County Border

Control Section Job	Interstate Standard	Highway	District	Limits	Description	Stage	Let Year	Miles	Est. Construction Cost	CAT Funding	Funding
0160-07-035	YES	US 277	Laredo	STATE LOOP 79 (DEL RIO) To 9.3 MI NORTH OF US90 SOUTH INTERSECTION	WIDEN EXISTING ROADWAY TO 4-LANE DIVIDED (PORTS-TO-PLAINS)	P	2035	9.32	\$163,533,304		\$163,533,304
0299-01-077	YES	US 277	Laredo	VALVERDE/KINNEY COUNTY LINE To STATE LOOP 79 (DEL RIO)	WIDEN EXISTING ROADWAY TO 4-LANE DIVIDED (PORTS-TO-PLAINS)	P	2035	6.98	\$203,977,023		\$203,977,023
0299-02-038	YES	US 277	Laredo	VALVERDE/KINNEY COUNTY LINE To MAVERICK/KINNEY COUNTY LINE	WIDEN EXISTING ROADWAY TO 4-LANE DIVIDED (PORTS-TO-PLAINS)	P	2035	13.56	\$239,145,476		\$239,145,476
0299-03-075	YES	US 277	Laredo	0.6 MILES NORTH OF SH 131 To MAVERICK/KINNEY COUNTY LINE	WIDEN EXISTING ROADWAY TO 4-LANE DIVIDED AND CITY OF NORMANDY / QUEMADO RELIEF ROUTE (PORTS-TO-PLAINS)	P	2035	16.57	\$291,898,154		\$291,898,154
0299-04-083		US 277	Laredo	0.876 MILES SOUTH OF SL 480 To 1.217 MILES NORTH OF SL 480	REHABILITATION OF EXISTING 2-LANE ROADWAY CONSISTING OF INSTALLING NEW SUBGRADE, FLEXBASE, PRIME COAT, HOTMIX, MBGF, SIGNS, AND PAVEMENT MARKING	PS&E	2026	2.08	\$11,502,054	\$11,049,044	\$11,049,044
0299-04-084	YES	US 277	Laredo	STATE LOOP 480 NORTH (EAGLE PASS) To 0.6 MILES NORTH OF SH 131	WIDEN EXISTING ROADWAY TO 4-LANE DIVIDED (PORTS-TO-PLAINS)	P	2035	6.70	\$230,353,363		\$230,353,363
0300-01-110	YES	US 277	Laredo	11.8 MI WEST OF	WIDEN EXISTING ROADWAY TO	P	2035	8.25	\$181,117,530		\$181,117,530
Total									\$4,799,046,669	\$793,609,910	\$3,905,436,759



 = Under Construction
  = Fully Funded
  = Partial/Unfunded
 = Future Interstates
  = County Border

Laredo District

DISTRICT

Laredo

STATE SENATE

All

STATE HOUSE

All

HIGHWAY

All

PROJECT STAGE

All

FUNDING STATUS

All

CSJ

All

Corridor View

District View

Tabloid View

Project Viewer

San Angelo

Del Rio

Piedras Blancas

Nuevo Laredo

Monclova

Edinburg

50 mi

Icon Map Pro

Tekantis

OpenMapTiles

OpenStreetMap contributors

Under Construction

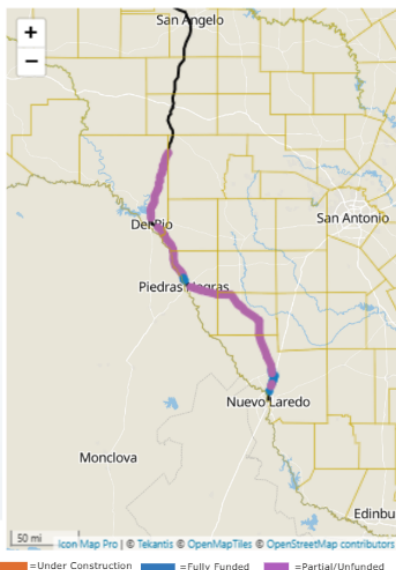
Fully Funded

Partial/Unfunded

Future Interstates

County Border

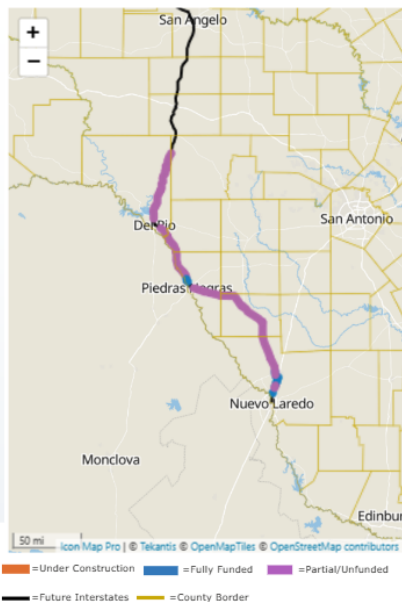
Control Section Job	Interstate Standard	Highway	District	Limits	Description	Stage	Let Year	Miles	Est. Construction Cost	CAT Funding	Funding
0300-01-110	YES	US 277	Laredo	SH 131 11.8 MI WEST OF THE DIMMIT COUNTY LINE To STATE LOOP 480 SOUTH (EAGLE PASS)	WIDEN EXISTING ROADWAY TO 4-LANE DIVIDED (PORTS-TO-PLAINS)	P	2035	8.25	\$181,117,530		\$
0300-02-044	YES	US 277	Laredo	DIMMIT/MAVERICK COUNTY LINE To 11.8 MI WEST OF THE DIMMIT COUNTY LINE	WIDEN EXISTING ROADWAY TO 4-LANE DIVIDED (PORTS-TO-PLAINS)	P	2035	11.75	\$207,493,869		\$
0300-03-080	YES	US 277	Laredo	CITY OF CARRIZO SPRINGS To DIMMIT/MAVERICK COUNTY LINE	WIDEN EXISTING ROADWAY TO 4-LANE DIVIDED AND CITY OF CARRIZO SPRINGS RELIEF ROUTE (PORTS-TO-PLAINS)	P	2035	19.31	\$339,375,566		\$
0922-10-038	YES	Various	Laredo	RELIEF ROUTE AROUND THE CITY OF QUEMADO To .	NEW LOCATION 4-LANE DIVIDED RELIEF ROUTE AROUND THE CITY OF QUEMADO (PORTS-TO-PLAINS)	P	2035		\$106,525,440		\$
0922-10-042		Various	Laredo	CAMINO REAL PORT OF ENTRY TOLL BOTHS To 0.5 MILES EAST ON SOUTH MONROE ST	FOR THE CONSTRUCTION OF THE REALIGNMENT OF APPROACH ROADWAYS TO P.O.E.	PS&E	2026		\$22,518,638	\$21,336,036	
0922-49-004	YES	Various	Laredo	RELIEF ROUTE AROUND THE CITY OF CATARINA To .	NEW LOCATION 4-LANE RELIEF ROUTE AROUND THE CITY OF CATARINA (PORTS-TO-PLAINS)	P	2035		\$52,449,930		\$
Total									\$4,799,046,669	\$793,609,910	\$3,9



Laredo District

DISTRICT
Laredo
STATE SENATE
All
STATE HOUSE
All
HIGHWAY
All
PROJECT STAGE
All
FUNDING STATUS
All
CSJ
All

Corridor View
District View
Tabloid View
Project Viewer



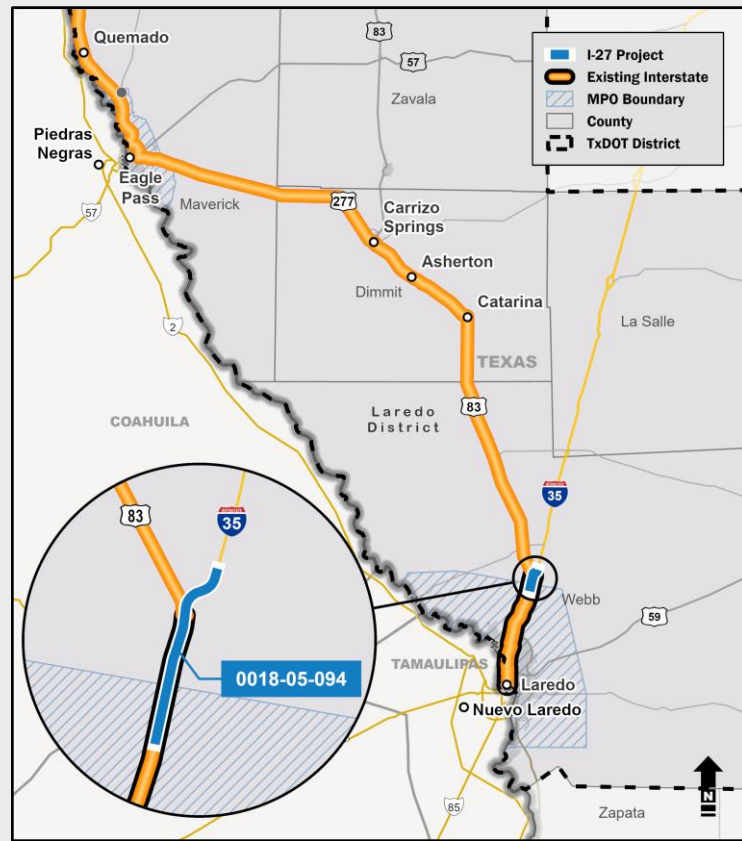
Control Section Job	Interstate Standard	Highway	District	Limits	Description	Stage	Let Year	Miles	Est. Construction Cost	CAT Funding	Fund
				K COUNTY LINE To 11.8 MI WEST OF THE DIMMIT COUNTY LINE	4-LANE DIVIDED (PORTS-TO-PLAINS)						
0300-03-080	YES	US 277	Laredo	CITY OF CARRIZO SPRINGS To DIMMIT/MAVERICK COUNTY LINE	WIDEN EXISTING ROADWAY TO 4-LANE DIVIDED AND CITY OF CARRIZO SPRINGS RELIEF ROUTE (PORTS-TO-PLAINS)	P	2035	19.31	\$339,375,566		\$3
0922-10-038	YES	Various	Laredo	RELIEF ROUTE AROUND THE CITY OF QUEMADO To .	NEW LOCATION 4-LANE DIVIDED RELIEF ROUTE AROUND THE CITY OF QUEMADO (PORTS-TO-PLAINS)	P	2035		\$106,525,440		\$1
0922-10-042		Various	Laredo	CAMINO REAL PORT OF ENTRY TOLL BOTHS To 0.5 MILES EAST ON SOUTH MONROE ST	FOR THE CONSTRUCTION OF THE REALIGNMENT OF APPROACH ROADWAYS TO P.O.E.	PS&E	2026		\$22,518,638	\$21,336,036	
0922-49-004	YES	Various	Laredo	RELIEF ROUTE AROUND THE CITY OF CATARINA To .	NEW LOCATION 4-LANE RELIEF ROUTE AROUND THE CITY OF CATARINA (PORTS-TO-PLAINS)	P	2035		\$52,449,930		\$
0922-49-005	YES	Various	Laredo	RELIEF ROUTE AROUND THE CITY OF ASHERTON To .	NEW LOCATION 4-LANE DIVIDED RELIEF ROUTE AROUND THE CITY OF ASHERTON (PORTS-TO-PLAINS)	P	2035		\$87,416,550		\$
0922-49-006	YES	Various	Laredo	RELIEF ROUTE AROUND THE CITY OF C-SPRING To .	NEW LOCATION 4-LANE DIVIDED RELIEF ROUTE AROUND THE CITY OF CARRIZO SPRINGS (PORTS-TO-PLAINS)	P	2035		\$104,899,861		\$1
Total									\$4,799,046,669	\$793,609,910	\$3,94

What's Next for I-27 Designation?



2026 UTP

- CSJ: 0018-05-094
- I-35
- 4-lane to 6-lane
- 3.8 miles, from 2.68 miles north of Uniroyal interchange to 1.2 miles north of US 83 interchange
- 2029 Let Date
- Approved for Construction Funding: \$270.8M



San Angelo District

DISTRICT
San Angelo

STATE SENATE
All

STATE HOUSE
All

HIGHWAY
All

PROJECT STAGE
All

FUNDING STATUS
All

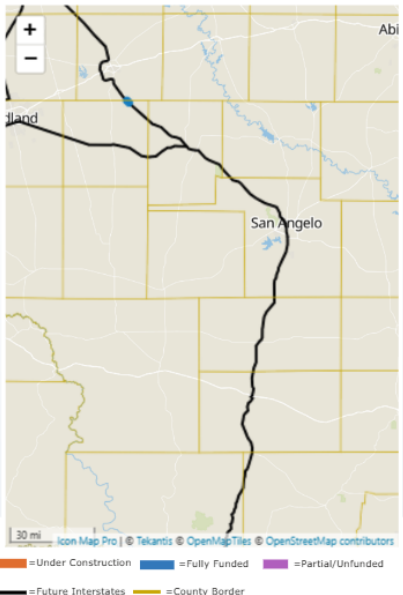
CSJ
All

Corridor View

District View

Tabloid View

Project Viewer



Control Section Job	Interstate Standard	Highway	District	Limits	Description	Stage	Let Year	Miles	Est. Construction Cost	CAT Funding	Funding
0069-02-030		US 87	San Angelo	Howard County Line To 0.45 Miles S of Howard County Line	Construct Four Lane Divided Highway From A Four Lane Undivided Highway	PE	2027		\$3,950,524	\$3,716,741	
0907-24-055	YES	Various	San Angelo	US 87 To US 67	Construct New Location Relief Route	PS&E	2032		\$96,185,599	\$23,199,999	\$7
0907-27-009	YES	Various	San Angelo	3.5 miles South of SL 467 on US 277 To 4 miles North of IH 10 on US 277	Construct new location relief route.	P	2034		\$89,376,000		\$8
Total									\$189,512,123	\$26,916,740	\$16

Odessa District

DISTRICT	STATE SENATE	STATE HOUSE	HIGHWAY	PROJECT STAGE	FUNDING STATUS	CSJ					
Odessa	All	All	All	All	All	All					
							Corridor View	District View	Tabloid View	Project Viewer	
Control Section Job	Interstate Standard	Highway	District	Limits	Description	Stage	Let Year	Miles	Est. Construction Cost	CAT Funding	Func
0005-14-092		IH 20	Odessa	EAST OF CR 1250 To EAST OF SH 349	RECONSTRUCTION OF FRONTAGE ROADS, RAMPS, U TURNS, INTERCHANGES. CONVERT FRONTAGE ROADS TO ONE-WAY OPERATION. WIDEN FROM 4 TO 6 LANES	PS&E	2027		\$236,447,292	\$222,538,628	
0005-14-093		IH 20	Odessa	ECTOR COUNTY LINE To EAST OF CR 1300	RECONSTRUCTION OF FRONTAGE ROADS, RAMPS, U TURNS, INTERCHANGES. CONVERT FRONTAGE ROADS TO ONE-WAY OPERATION. WIDEN FROM 4 TO 6 LANES	CST	2023	10.40	\$136,743,461	\$159,971,457	
0005-14-094		IH 20	Odessa	EAST OF CR 1300 To EAST OF CR 1250	RECONSTRUCTION OF FRONTAGE ROADS, RAMPS, U TURNS, INTERCHANGES. CONVERT FRONTAGE ROADS TO ONE-WAY OPERATION. WIDEN FROM 4 TO 6 LANES	CST	2024	5.37	\$162,898,983	\$215,769,857	
0005-14-100		IH 20	Odessa	AT COTTON FLAT RD To .	RECONSTRUCTION OF FRONTAGE ROADS, RAMPS, U TURNS AND INTERCHANGE	CST	2022		\$68,497,620	\$70,961,878	
0005-15-093		IH 20	Odessa	EAST OF SH 349 To EAST OF FM 1208	RECONSTRUCTION OF FRONTAGE ROADS, RAMPS, U TURNS, INTERCHANGES. CONVERT FRONTAGE ROADS TO ONE-WAY OPERATION. WIDEN FROM 4 TO 6 LANES	PS&E	2031	11.76	\$614,055,771	\$72,000,001	\$5
0380-07-028	YES	SH 349	Odessa	Dawson County Line To 0.2 MI N of SH 176	Ports-to-Plains Convert Non-Freeway to Freeway	P	2043		\$855,539,440		\$8
Total									\$4,864,340,260	\$761,782,264	\$4,102,557,996



Odessa District

DISTRICT

STATE SENATE

STATE HOUSE

HIGHWAY

PROJECT STAGE

FUNDING STATUS

CSJ

Odessa

All

All

All

All

All

All

Corridor View

District View

Tabloid View

Project Viewer

<



Abilene District

DISTRICT
Abilene

STATE SENATE
All

STATE HOUSE
All

HIGHWAY
All

PROJECT STAGE
All

FUNDING STATUS
All

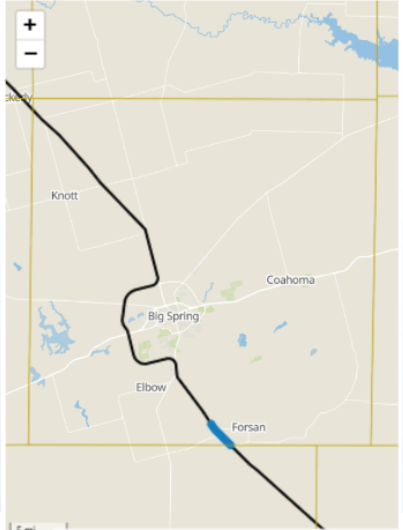
CSJ
All

Corridor View

District View

Tabloid View

Project Viewer



5 mi

icon Map Pro | © Tekantis © OpenMapTiles © OpenStreetMap contributors

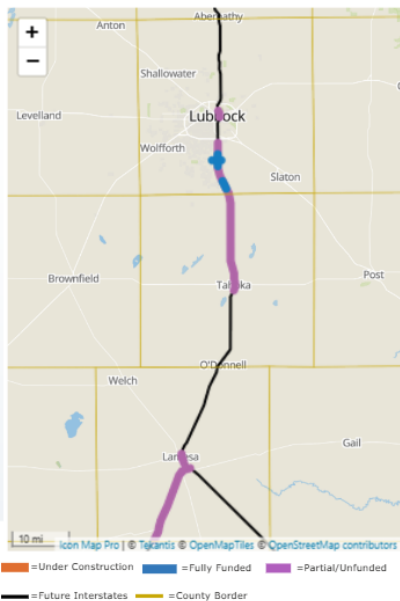
Orange = Under Construction Blue = Fully Funded Purple = Partial/Unfunded

Black = Future Interstates Yellow = County Border

Control Section Job	Interstate Standard	Highway	District	Limits	Description	Stage	Let Year	Miles	Est. Construction Cost	CAT Funding	Fundi
0069-01-061		US 87	Abilene	2.53 MILES NORTH OF GLASSCOCK CO To GLASSCOCK CO	Construct Four Lane Divided Highway From A Four Lane Undivided Highway	PE	2027	2.05	\$17,900,811	\$16,841,481	
Total									\$17,900,811	\$16,841,481	

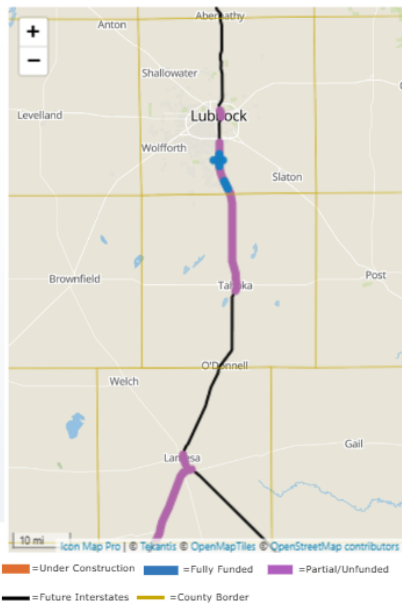
Lubbock District

DISTRICT	STATE SENATE	STATE HOUSE	HIGHWAY	PROJECT STAGE	FUNDING STATUS	CSJ					
Lubbock	All	All	All	All	All	All					
							Corridor View	District View	Tabloid View	Project Viewer	
Control Section Job	Interstate Standard	Highway	District	Limits	Description	Stage	Let Year	Miles	Est. Construction Cost	CAT Funding	Fund
0067-11-054		IH 27	Lubbock	13TH STREET IN LUBBOCK To MUNICIPAL DRIVE IN LUBBOCK	PE development for Direct Connects at US 82 and I 27	P	2026		\$0	\$1,600,000	
0068-01-073		US 87	Lubbock	114TH STREET To 146TH STREET	Construct bridge at SL 88 and US87 interchange and two direct connect bridges with ADA ramps, shared-use paths, sidewalk elements and pedestrian signals.	Ready to Let	2026	2.00	\$139,259,248	\$127,421,766	
0068-01-083		US 87	Lubbock	82nd Street To Lynn County Line	Convert 4-Lane Divided principal arterial to Interstate.	P	2025		\$4,000,000	\$4,001,000	
0068-01-086		US 87	Lubbock	0.75 MI NORTH OF FM 41 To 0.75 MI SOUTH OF FM 41	NEW INTERCHANGE	P	2025		\$22,732,320	\$30,575,208	
0068-02-051		US 87	Lubbock	Lubbock County Line To South SL 472 in Tahoka	Convert 4-Lane Divided principal arterial to Interstate.	P	2025		\$4,000,000	\$4,001,000	
0068-04-042		BU 87K	Lubbock	0.25 N of 10th St. To 1st St.	Converting non-freeway business route to freeway, converting 2-way to 1-way with mill & inlay work, new shoulders and ADA improvements.	P	2031		\$4,832,128	\$4,480,000	
0068-05-042		BU 87K	Lubbock	1st St. To Reference Marker 334 + 0.071	Converting non-freeway business route to freeway, converting 2-way to 1-way with mill & inlay, new shoulders and ADA improvements.	P	2031		\$7,248,192	\$6,720,000	
0380-06-022	YES	SH 349	Lubbock	SH 137 To MARTIN COUNTY	Ports -to-Plains Convert Non-freeway to Freeway	P	2043		\$701,665,440		\$701,665,440
Total									\$1,119,074,269	\$349,172,579	\$770,901,689



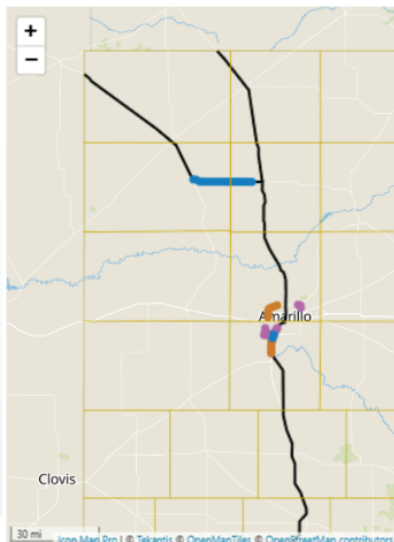
Lubbock District

DISTRICT	STATE SENATE	STATE HOUSE	HIGHWAY	PROJECT STAGE	FUNDING STATUS	CSJ							
Lubbock	All	All	All	All	All	All							
							Corridor View	District View	Tabloid View	Project Viewer			
Control Section Job	Interstate Standard	Highway	District	Limits	Description	Stage	Let Year	Miles	Est. Construction Cost	CAT Funding	Fund		
0068-01-086		US 87	Lubbock	0.75 MI NORTH OF FM 41 To 0.75 MI SOUTH OF FM 41	NEW INTERCHANGE	P	2025		\$22,732,320	\$30,575,208			
0068-02-051		US 87	Lubbock	Lubbock County Line To South SL 472 in Tahoka	Convert 4-Lane Divided principal arterial to Interstate.	P	2025		\$4,000,000	\$4,001,000			
0068-04-042		BU 87K	Lubbock	0.25 N of 10th St. To 1st St.	Converting non-freeway business route to freeway, converting 2-way to 1-way with mill & inlay work, new shoulders and ADA improvements.	P	2031		\$4,832,128	\$4,480,000			
0068-05-042		BU 87K	Lubbock	1st St. To Reference Marker 334 + 0.071	Converting non-freeway business route to freeway, converting 2-way to 1-way with mill & inlay, new shoulders and ADA improvements.	P	2031		\$7,248,192	\$6,720,000			
0380-06-022	YES	SH 349	Lubbock	SH 137 To MARTIN COUNTY LINE	Ports -to-Plains Convert Non-freeway to Freeway	P	2043		\$701,665,440			\$7	
0380-19-005	YES	SH 349	Lubbock	US 87 To SH 137	Ports-to-Plains Convert Non-Freeway to Freeway	P	2043		\$80,014,480			\$	
1502-01-031		FM 1585	Lubbock	CR 2240 (AVE U) To 0.5 MI EAST OF US 87	Conversion of FM 1585 to SL 88. Construction of 4 new frontage lanes and widening from 2 main lanes to 4 main lanes and construction of overpass with ADA ramps, sidewalk elements, shared-use paths and pedestrian signals.	Ready to Let	2026	2.00	\$155,322,460	\$170,373,605			
Total									\$1,119,074,269	\$349,172,579	\$78		



Amarillo District

DISTRICT	STATE SENATE	STATE HOUSE	HIGHWAY	PROJECT STAGE	FUNDING STATUS	CSJ							
Amarillo	All	All	All	All	All	All							
							Corridor View	District View	Tabloid View	Project Viewer			
Control Section Job	Interstate Standard	Highway	District	Limits	Description	Stage	Let Year	Miles	Est. Construction Cost	CAT Funding	Fund		
0904-00-242		Various	Amarillo	SL 335 To North of Dumas	Future IH 27 Feasibility Study	P	2024		\$2,319,033	\$2,500,001			
2494-02-011	YES	SL 335	Amarillo	WEST OF FM 2590 (SOUTH) To FM 2186	B-2 PHASE V: CONSTRUCT 4 NEW MAINLANES, RAMPS, AND FM 2186 GRADE SEPARATION	PS&E	2033	0.70	\$28,669,279	\$3,411,438			
2635-01-042		SL 335	Amarillo	FM 1912 To BENNET ROAD	CONSTRUCT NEW RAMPS AND REALIGN EXISTING RAMPS	PS&E	2033	1.79	\$10,291,202				
2635-02-034	YES	SL 335	Amarillo	IH 27 To BELL STREET	SL 335/I-27 INTERCHANGE PHASE II: CONSTRUCT SL 335 3RD LEVEL BRIDGE AT IH 27, 4 NEW MAINLANES, AND RAMPS	PS&E	2027	0.44	\$30,911,729	\$29,113,324			
2635-03-023	YES	SL 335	Amarillo	EAST OF COULTER To IH 27	SL 335/I-27 INTERCHANGE PHASE II: CONSTRUCT SL 335 3RD LEVEL BRIDGE AT IH 27, 4 NEW MAINLANES, AND RAMPS	PS&E	2027	0.92	\$29,216,428	\$27,518,879			
2635-03-024		SL 335	Amarillo	FM 2590 To WEST OF COULTER	B-1 Phase II: (Tie In) Construct New 4-Main Lanes, Grade Sep, ramps and 2-lane Frontage roads	CST	2020	0.90	\$25,974,527	\$30,655,865			
2635-03-028		SL 335	Amarillo	IH 27 To Coulter	SL 335/I-27 INTERCHANGE PHASE II CONSTRUCT TWO DIRECT CONNECTOR RAMPS	PS&E	2027	0.58	\$175,580,007	\$163,127,302			
2635-04-031		SL 335	Amarillo	SW 9TH To FM 1719	C-1 Phase I: Upgrade to 4-Lane Divided from SW 9th to RM 1061, Upgrade to Freeway from RM 1061 to FM 1719	CST	2022	6.01	\$133,890,000	\$140,992,321			
2635-04-040		SL 335	Amarillo	FM 1719 To US 87	C-2: CONVERT 4-LANE TO 4-LANE FREEWAY WITH FRT RDS AND US 87 INTERCHANGE	P	2035	2.88	\$172,338,880				
Total									\$1,907,348,232	\$1,164,018,496	\$97,000,000		

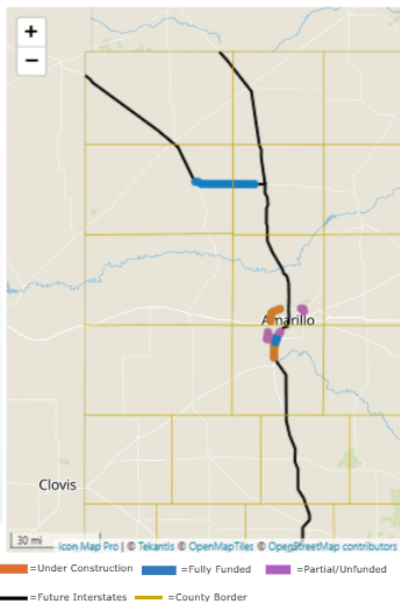


Amarillo District

DISTRICT
STATE SENATE
STATE HOUSE
HIGHWAY
PROJECT STAGE
FUNDING STATUS
CSJ

Amarillo
All
All
All
All
All
All

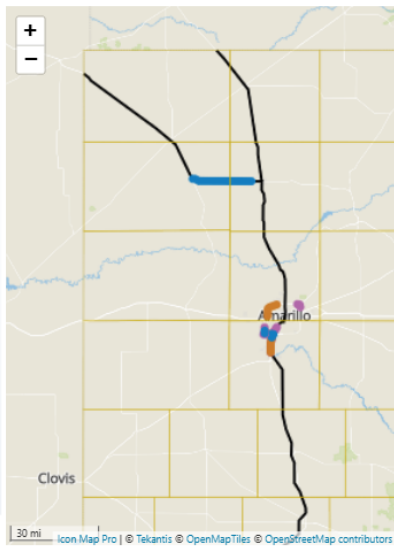
Corridor View
District View
Tabloid View
Project Viewer



Control Section Job	Interstate Standard	Highway	District	Limits	Description	Stage	Let Year	Miles	Est. Construction Cost	CAT Funding	Fund
0168-09-082		IH 27	Amarillo	WESTERN STREET To SL 335	PHASE II OF A MULTI-PHASE IMPLEMENTATION TO WIDEN FREEWAY FROM 4-LANES TO 6-LANES	PS&E	2033	3.58	\$178,013,131		\$
0168-09-083		IH 27	Amarillo	SL 335 To NORTH OF US 60/US 87 INTERCHANGE	WIDEN FREEWAY FROM 4-LANES TO 6-LANES	CST	2024		\$264,841,171	\$283,661,496	
0168-09-148		IH 27	Amarillo	WESTERN STREET To SOUTH OF SUNDOWN	WIDEN FREEWAY FROM 4-LANES TO 6-LANES	P	2033	4.27	\$348,269,600		\$
0168-09-173		IH 27	Amarillo	SOUTH OF SUNDOWN To NORTH OF US 60/US 87 INTERCHANGE	WIDEN FREEWAY FROM 4-LANES TO 6-LANES	P	2033	4.75	\$155,478,400		\$
0168-09-186		IH 27	Amarillo	SUNDOWN LANE To SL 335	SL 335/I-27 INTERCHANGE PH II IH 27 FRONTAGE RD REHAB	PS&E	2027	1.04	\$19,307,605	\$18,572,731	
0168-10-080		IH 27	Amarillo	Randall / Potter Co Line To 10th Street Downtown Amarillo	Replace large signs, replace existing signs and replace bridge clearance signs	PS&E	2040	29.48	\$8,008,000		
0425-01-021		US 87	Amarillo	EAST OF US 385/US 87 INTERCHANGE To MOORE COUNTY LINE	CONSTRUCT 4 LANE DIVIDED HIGHWAY	PS&E	2025	12.75	\$124,228,662	\$234,049,103	
0425-02-037		US 87	Amarillo	HARTLEY COUNTY LINE To FM 2589 WEST OF DUMAS	CONSTRUCT 4 LANE DIVIDED HIGHWAY	PS&E	2025	7.19	\$61,742,958	\$117,018,968	
Total									\$1,907,348,232	\$1,164,018,496	\$9

Amarillo District

DISTRICT	STATE SENATE	STATE HOUSE	HIGHWAY	PROJECT STAGE	FUNDING STATUS	CSJ					
Amarillo	All	All	All	All	All	All	Corridor View	District View	Tabloid View	Project Viewer	
Control Section Job	Interstate Standard	Highway	District	Limits	Description	Stage	Let Year	Miles	Est. Construction Cost	CAT Funding	Fur
2635-03-023	YES	SL 335	Amarillo	EAST OF COULTER To IH 27	NEW MAINLANES, AND RAMP SL 335/I-27 INTERCHANGE PHASE II: CONSTRUCT SL 335 3RD LEVEL BRIDGE AT IH 27, 4 NEW MAINLANES, AND RAMP	PS&E	2027	0.92	\$29,216,428	\$27,518,879	
2635-03-024		SL 335	Amarillo	FM 2590 To WEST OF COULTER	B-1 Phase II: (Tie In) Construct New 4-Main Lanes, Grade Sep, ramps and 2-lane Frontage roads	CST	2020	0.90	\$25,974,527	\$30,655,865	
2635-03-028		SL 335	Amarillo	IH 27 To Coulter	SL 335/I-27 INTERCHANGE PHASE II CONSTRUCT TWO DIRECT CONNECTOR RAMP	PS&E	2027	0.58	\$175,580,007	\$163,127,302	
2635-04-031		SL 335	Amarillo	SW 9TH To FM 1719	C-1 Phase I: Upgrade to 4-Lane Divided from SW 9th to RM 1061, Upgrade to Freeway from RM 1061 to FM 1719	CST	2022	6.01	\$133,890,000	\$140,992,321	
2635-04-040		SL 335	Amarillo	FM 1719 To US 87	C-2: CONVERT 4-LANE TO 4-LANE FREEWAY WITH FRT RDS AND US 87 INTERCHANGE	P	2035	2.88	\$172,338,880		\$
2635-05-004	YES	SL 335	Amarillo	FM 2186 To NORTH OF FM 2186	B-2 PHASE V: CONSTRUCT 4 NEW MAINLANES, RAMP, AND FM 2186 GRADE SEPARATION	PS&E	2033	1.60	\$28,541,402	\$19,707,774	
2635-05-005	YES	SL 335	Amarillo	NORTH OF FM 2186 To NORTH OF ARDEN ROAD	B-2 PHASE VI: CONSTRUCT 4 NEW MAINLANES, RAMP, AND ARDEN ROAD GRADE SEPARATION	PS&E	2033	1.60	\$56,883,801	\$86,052,837	
2635-05-006	YES	SL 335	Amarillo	NORTH OF ARDEN ROAD To NORTH OF HILLSIDE ROAD	B-2 PHASE VII: CONSTRUCT 4 NEW MAINLANES, RAMP, AND HILLSIDE ROAD GRADE SEPARATION	PS&E	2033	1.11	\$52,842,417	\$7,636,456	
Total									\$1,907,348,232	\$1,164,018,496	\$



What's Next for I-27 Designation?



2026 UTP

- CSJ: 2635-05-005
- State Loop 335
- Construct mainlanes
- From north of FM 2186 to north of Arden Rd.
- 2030 Let Date
- Approved for Construction Funding: \$62.7M





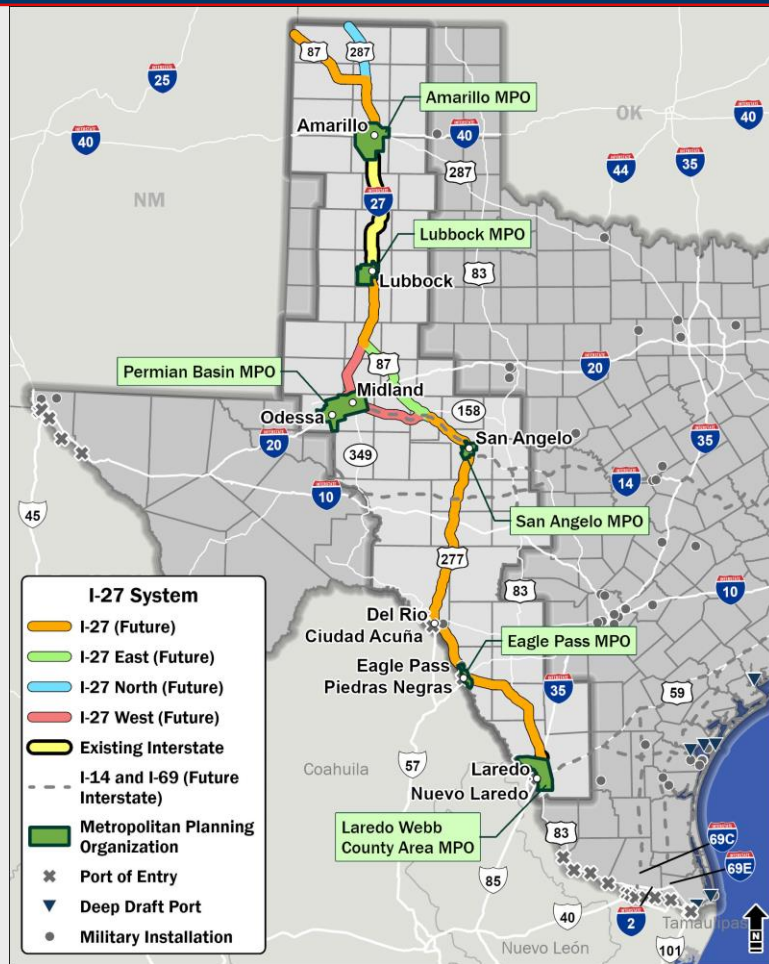
September 4, 2025

Metropolitan Planning Organization (MPO) Update

Cameron Walker, AICP, MPO Director, Permian Basin

MPOs along the I-27 Corridor

- Laredo Webb County Area MPO
- Eagle Pass MPO
- San Angelo MPO
- Permian Basin MPO
- Lubbock MPO
- Amarillo MPO





September 4, 2025

Closing Remarks

Advisory Committee Chair