



Public Meeting 2024 Texas Rail Plan



August 19, 2024

WELCOME!

**Why am
I here?**



**Learn about the
2024 Texas Rail Plan**



**Provide input and
establish goals**

SAFETY moment



#EndTheStreakTX

[View the campaign »](#)



Talk. Text. Crash.

[View the campaign »](#)



Bicycle Safety

[View the campaign »](#)



Pedestrian Safety

[View the campaign »](#)



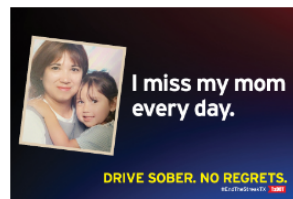
Move Over or Slow Down

[View the campaign »](#)



College and Young Adult Impaired Driving

[View the campaign »](#)



Faces of Drunk Driving

[View the campaign »](#)



Be Safe. Drive Smart.

[View the campaign »](#)

WHO IS the TxDOT Rail Division?

- **Established** in 2009
- **Implements** rail-related policies
- **Analyzes** rail infrastructure and operations
- **Plans and coordinates** rail projects
- **Oversees** rail-highway safety and inspection
- **State liaison** to Federal Railroad Administration
- **Manages** state-owned railroad

WHAT IS the Texas Rail Plan?

- **Defines** what the system is today
- **Determines** needs for the future
- **Integrates** with other TxDOT plans
- **Includes** stakeholder input —
TxDOT wants to hear from you!



Texas Rail Plan History:

**2005**First rail
plan**2019**Last
update

DEVELOPING the Texas Rail Plan goals and objectives

Previous Rail Plan Goals:



SAFETY: Reduce rail-related fatalities and serious injuries, especially at at-grade rail crossings.



ASSET MANAGEMENT: Achieve a state of good repair of the rail assets, especially those assets owned by TxDOT.



MOBILITY AND RELIABILITY: Reduce congestion and improve rail system efficiency, capacity, and performance, including rail freight and passenger travel time reliability.



MULTIMODAL CONNECTIVITY: Provide freight and passenger choice by improving the rail system and providing intermodal and multimodal connectivity.



ECONOMIC COMPETITIVENESS: Strengthen Texas' position as a trade and logistics hub and support both existing industries and the attraction of new industries.

WHY update the Texas Rail Plan?

The federal government requires states to develop, maintain, and update rail plans (49 CFR 266.15).

Requirements for State Rail Plans:

- Based on a comprehensive, coordinated, and continuing planning process for all transportation services within the state.
- Developed with an opportunity for participation by persons interested in rail activity in the state and adjacent states, where appropriate.

Section 11315 of the FAST Act (2015) amended the statutory requirements under 49 U.S.C. Chapter 227 pertaining to state rail plan requirements making the updates mandatory every four years instead of the original five years.

- *Continues to be required by the Infrastructure Investment and Jobs Act/BIL.*

Inclusion within a state rail plan will be considered by the Federal Railroad Administration for competitive grant programs.

WHY update the Texas Rail Plan?

Additional Reasons for Update:



Gain guidance for future rail priorities from dialogue with stakeholders and the general public.



Assess rail needs and develop a list of potential rail improvement projects.

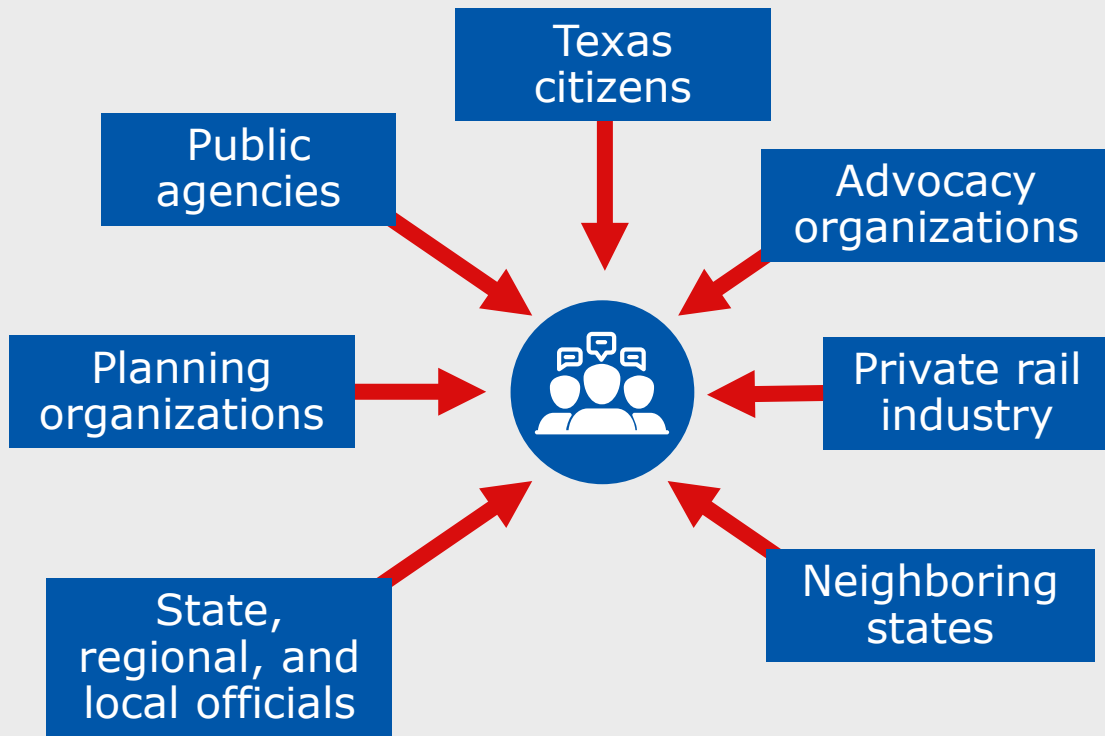


Communicate to the public and decision makers about rail's benefits to Texas and its role within the Texas transportation network.



Understand needs and issues of the rail industry.

WHO ARE the Texas Rail Plan stakeholders?



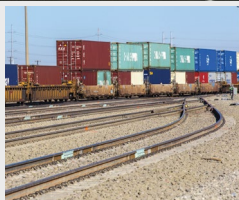
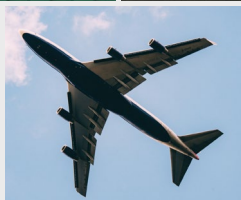
Rail Transportation

- Freight Rail
- Passenger Rail



Freight Systems

- Air
- Waterway
- Freight
- Highway
- Port



DEFINITIONS

- **TRP:** Texas Rail Plan
- **FRA:** Federal Railroad Administration
- **Class I/Class III/Shortline:** Different "sizes" of freight railroads
- **Intermodal:** The transportation of freight in an intermodal container or vehicle, using multiple modes of transportation
- **Intercity/Commuter Rail:** Designations for passenger rail systems
- **MPO:** Metropolitan Planning Organization
- **Amtrak:** National Railroad Passenger Corporation

FRA **guidance** **FORMAT**

Executive Summary

1. The Role of Rail in Statewide Transportation (Overview)
2. The State's Existing Rail System:
 - i. Description and Inventory
 - ii. Trends and Forecasts
 - iii. Rail Service Needs and Opportunities
3. Proposed Passenger Rail Improvements and Investments
4. Proposed Freight Rail Improvements and Investments
5. The State's Rail Service and Investment Program
6. Coordination and Review

Technical Appendix

STATEWIDE Passenger rail



Corridor identification and development **PROGRAM**

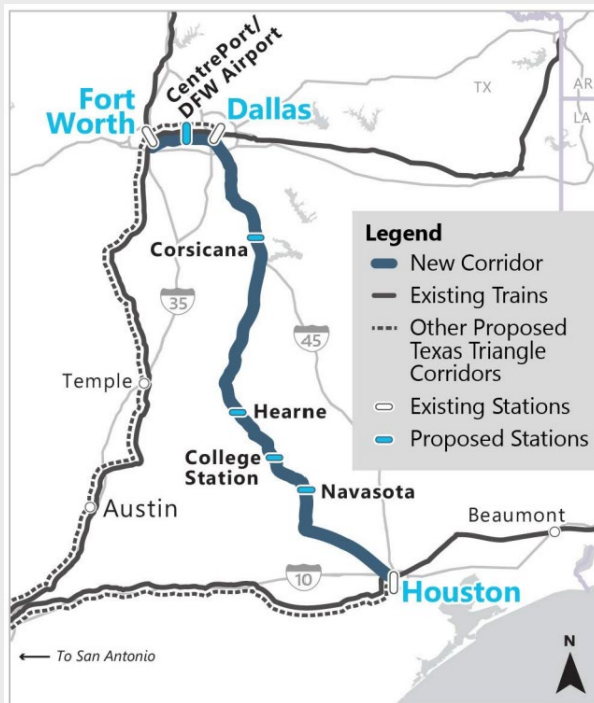
The FRA CID Program funds the service development planning, preliminary engineering, and environmental evaluation of new and expanded intercity passenger corridors.

Corridors in Texas receiving CID awards include:

1. Texas Triangle: Dallas-Fort Worth to Houston Intercity Passenger Rail Corridor (TxDOT)
2. Texas Triangle: Houston to San Antonio Corridor (TxDOT)
3. Heartland Flyer Extension (Kansas DOT)
4. I-20 Corridor Intercity Passenger Rail Service (Southern Rail Commission)
5. Daily Sunset Limited Service (Amtrak)
6. Amtrak Texas High-Speed Rail Corridor (Amtrak)
7. Fort Worth to Houston High-Speed Rail Corridor (North Central Texas Council of Governments)

Corridor ID program AWARDS

Dallas-Fort Worth to Houston



Houston to San Antonio



SOURCE: TxDOT.gov (Corridor Identification and Development Program)

FRA long- distance service STUDY

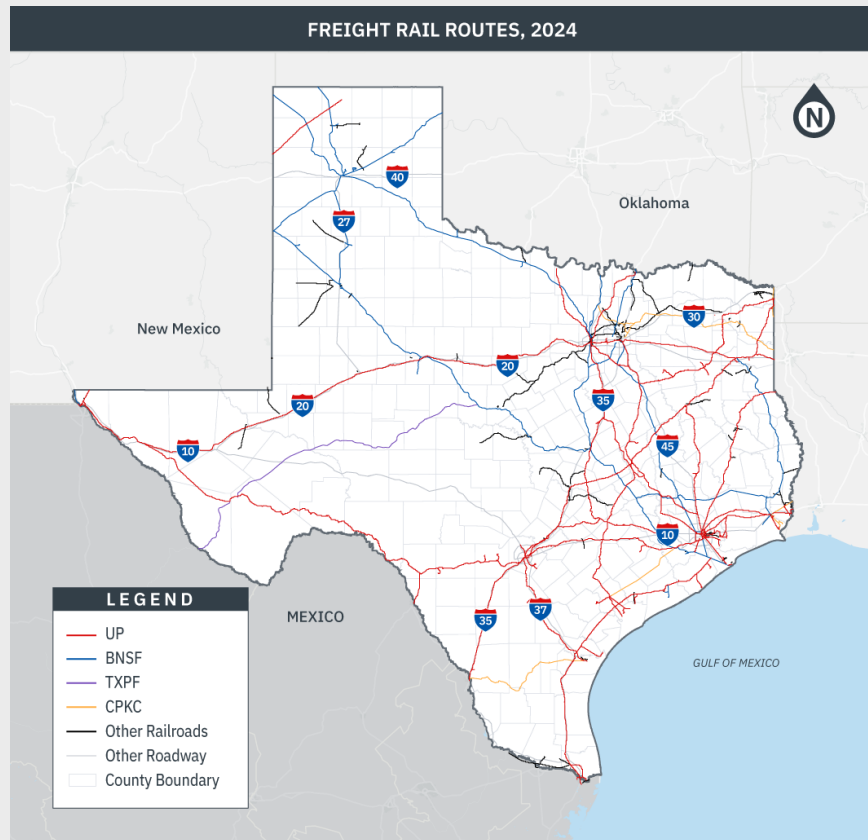
The IIJA required FRA to conduct a study to evaluate the restoration of daily intercity passenger service along any:

- Amtrak long-distance routes that were discontinued.
- Amtrak long-distance routes that occur on a nondaily basis.
- Potential new Amtrak long-distance routes.

Proposed network of preferred routes includes the following that serve Texas:

1. Dallas/Fort Worth – Miami
2. Denver – Houston (via Amarillo and Dallas/Fort Worth)
3. Phoenix – Minneapolis/St. Paul (via Amarillo)
4. Dallas/Fort Worth – New York
5. Houston – New York
6. San Antonio – Minneapolis/St. Paul (via Dallas/Fort Worth)
7. San Francisco – Dallas/Fort Worth (via El Paso and Midland)
8. Dallas/Fort Worth – Atlanta (via I-20)
9. El Paso – Billings

STATEWIDE Freight rail



WHAT TxDOT has already heard

Top Themes:



Safety



Modernization/technology



Funding



Economic development



Reliability



Expanded connectivity



Bottlenecks

Other
relevant
plans:



Connecting
Texas 2050



Statewide
Multimodal
Transit Plan

WHAT TxDOT has already heard



Safety:

- Safe routes to schools
- Resiliency and emergency response
- Priority of grade separations, especially in urban areas



Funding:

- Leverage federal funding opportunities
- Dedicated state stream for improvements
- Infrastructure investment needed



Reliability:

- Address congestion
- Consider length of time routes take
- End-to-end/last-mile connections



Bottlenecks:

- Congestion around the state including the Metroplex, Uvalde, Houston, Beaumont, Eagle Pass
- Bridge condition and low clearances
- Blocked crossings

WHAT **TxDOT has** **already** **heard**



Modernization/ Technology:

- Performance standards
- Technology to identify potential bottlenecks
- Alternative fuel sources



Economic Development:

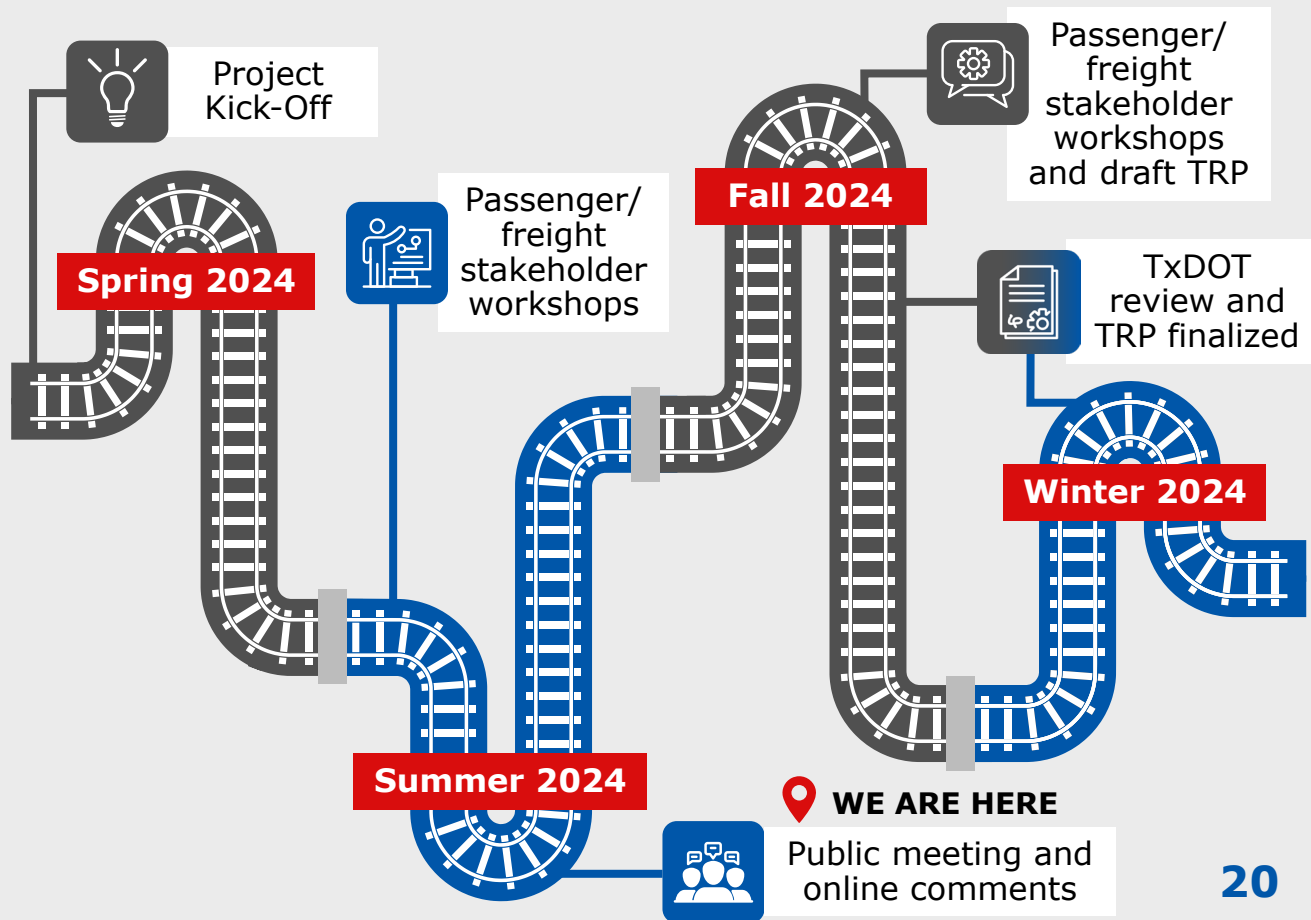
- New industrial centers
- Cross-border trade
- Development of supporting uses (i.e., air carriers, amenities)



Expanded Connectivity:

- Interstate and intercity passenger service
 - Support for multiple routes including Dallas to Austin, Austin to San Antonio, San Antonio to Houston, and Dallas to Houston
 - Connections to border cities
 - Increased service for routes and frequencies, both on existing and new routes
 - Interstate connection from Dallas to Oklahoma to Louisiana along I-20 and I-10, on to New Mexico
 - Opportunity for intra-state trips with fewer stops and higher speeds
- Population centers exist for increased routes
- Coordination between service types so riders can make transfers (i.e., airport, transit hubs)

Texas Rail Plan SCHEDULE



HOW can I stay informed and get involved?



Participate in a
commenting opportunity



Contact the Rail Division at
512.486.5230 or RRD_RailPlan@txdot.gov



Visit www.txdot.gov
Search "Texas Rail Plan"



Mail Texas Rail Plan c/o TxDOT Rail Division
6230 E. Stassney Lane, Austin, TX 78744

**The meeting
has ended. If
you have
questions,
please
unmute and
share.**

Ways to stay involved:



Participate in a
commenting opportunity



Contact the Rail Division at
512.486.5230 or RRD_RailPlan@txdot.gov



Visit www.txdot.gov
Search "Texas Rail Plan"



Mail Texas Rail Plan c/o TxDOT Rail Division
6230 E. Stassney Lane, Austin, TX 78744

