



**Thank you for dialing in  
Phones will be muted  
We will begin shortly**

August 26, 2025

# **Pre-RFP Meeting – Digital Delivery Program PS&E Services – Design Division**

Solicitation No. 601CT0000006306

RFP 48-6RFP5002

FY 2026 - Wave 1

## Housekeeping

- **Please note that all audio and video will be muted throughout this presentation.**
- **There will not be an opportunity to ask questions during the Pre-RFP presentation.**
- **You will be given an opportunity to ask questions after the presentation via email.**
- **This presentation will be posted to the TxDOT website.**

# Agenda

- 1** | Introductions
- 2** | Brief Project Overview
- 3** | Contract Selection Process
- 4** | RFP Information
- 5** | Avoid Disqualification
- 6** | Anticipated Timeframe
- 7** | Closing Remarks & Instructions for Questions

## Introductions

### PEPS Service Center for Divisions

| Procurement Support  | Title   |
|----------------------|---|
| Kori Rodriguez, P.E. | PEPS Service Center for Divisions Section Director      |
| Jessica Landry, P.E. | Procurement Engineer, PEPS Service Center for Divisions |

### TxDOT Design Division

| Speaker            | Title                                    |
|--------------------|--|
| Tyler Murphy, P.E. | Transportation Engineer, Design Division |

## General Scope of Work to be Performed:

Provide engineering services required for the preparation of plans, specifications, and estimates (PS&E), for various projects in both rural and urban settings.



### Mission:

Advancing TxDOT's transportation program through digital innovation

### Scope of Work Overview

- Project Management
- Roadway design
- Bridge Design
- Traffic Signal Design
- Drainage
- Utility Coordination (with the district)
- Geotechnical (with the district)
- Environmental (with the district)
- SUE
- Survey (using LiDAR)

Several projects under the three contracts



<https://www.txdot.gov/business/resources/digital-delivery.html>

## Expected Plan Set

Ensure that the PS&E package is suitable for the bidding and awarding of a construction contract and that the PS&E package is in accordance with the latest TxDOT policies and procedures, and the TxDOT Digital Delivery PS&E QC Checklist.

What submittal will look like:

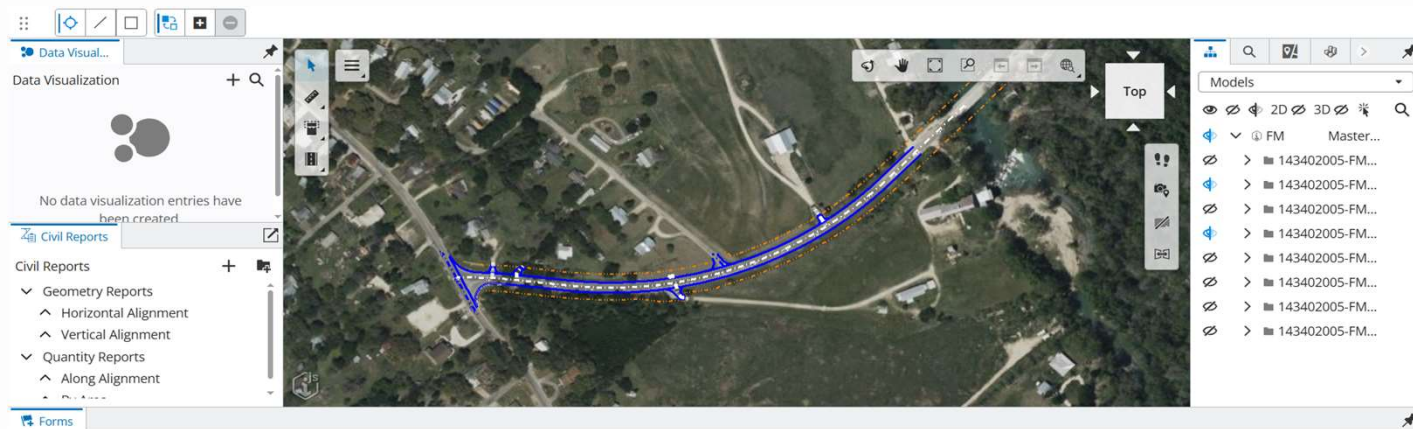
- All signed sealed plan deliverables will be model format (MALD)
- The project will be developed in ProjectWise
- A model stored in ProjectWise will be created in Itwin
- QC will be performed and submitted to the district using Itwin

Pilot projects – There will be testing of procedures involved.

- Receive a small 3R or 4R project from a selected district
- Including other divisions (Traffic, Bridge, Construction, etc.)



## Supporting the District



Help support the District's efforts by coordinating project-related issues and communications with TxDOT's internal resource areas through the Division's project manager. Through ongoing communication and mutual problem-solving, the District will identify and address project issues and assign a project to be a pilot project.

- Engagement with counties, municipalities, and other governmental entities at the direction of the District and Division's project manager, ensuring alignment with District priorities and protocols.

## Model Files

All model files will be created using the latest version of the software listed below that is currently used by the State.

- Roadway and traffic model files must be created using Bentley's OpenRoads Designer (ORD) tools. The files must be developed to the level of detail as shown in the TxDOT PS&E QC Checklist and the Model Development Standards (MDS).
- Drainage and utility model files must be created using Bentley's OpenRoads Designer Drainage and Utilities (ORD DU) tools. The files must be developed to the level of detail as shown in the TxDOT PS&E QC Checklist and the MDS.
- Bridge model files must be created using Bentley's Open Bridge Modeler (OBM) tools. The files must be developed to the level of detail as directed by the State.





| Standard Work Categories* |   | %      |
|---------------------------|---|--------|
| 1.5.1                     | Feasibility Studies                                   | 1.00%  |
| 1.8.1                     | Public Involvement                                    | 1.00%  |
| 2.1.1                     | Traffic Noise Analysis                                | 0.20%  |
| 2.2.1                     | Air Quality Analysis                                  | 0.20%  |
| 2.3.1                     | Wetland Delineation                                   | 0.20%  |
| 2.3.2                     | Conditional/Functional Assessment                     | 0.20%  |
| 2.6.5                     | Protected Species Evaluations                         | 0.25%  |
| 2.7.1                     | Sec. 4(F)/6(F) Evaluations                            | 0.25%  |
| 2.7.2                     | Historic Sites Sec. 4(f) Evaluations                  | 0.20%  |
| 2.12.1                    | Socio-Economic & Environmental Justice Analysis       | 0.25%  |
| 2.13.1                    | Hazardous Materials Initial Site Assessment           | 0.25%  |
| 2.14.1                    | Environmental Document Preparation                    | 1.00%  |
| 3.2.1                     | Route Studies & Schematic Design                      | 8.00%  |
| 4.2.1                     | Roadway Design  | 31.00% |
| 4.5.1                     | Constructability Review                               | 3.00%  |
| 4.6.1                     | 3-D Visualization and Animation Services              | 1.00%  |
| 5.2.1                     | Bridge Design   | 8.00%  |
| 5.5.1                     | Bridge & Non-Bridge Class Culvert and Inlet Design    | 5.00%  |
| 5.6.1                     | Structural Engineering for Overhead Sign Supports     | 1.00%  |
| 8.1.1                     | Signing, Pavement Marking & Channelization            | 2.00%  |
| 8.2.1                     | Illumination  | 1.00%  |
| 8.3.1                     | Signalization   | 1.00%  |
| 8.4.1                     | ITS Control Systems Analysis, Design & Implementation | 1.00%  |

| Standard Work Categories - Continued* |   | %     |
|---------------------------------------|---|-------|
| 8.6.1                                 | Rail-Highway Design   | 0.20% |
| 9.3.1                                 | Pedestrian Facility Design                                  | 0.50% |
| 9.3.2                                 | Accessibility Design  | 0.20% |
| 9.4.1                                 | Bikeway Design  | 0.50% |
| 10.1.1                                | Hydrologic Studies  | 5.00% |
| 10.2.1                                | Roadway Hydraulic Design                                    | 3.00% |
| 10.3.1                                | Bridge Hydraulic Design                                     | 2.00% |
| 10.5.1                                | Bridge Scour Evaluations And Analysis                       | 0.50% |
| 12.4.1                                | Pavement Design Services                                    | 0.50% |
| 14.1.1                                | Soil Exploration  | 1.00% |
| 14.2.1                                | Geotechnical Testing  | 2.00% |
| 14.3.1                                | Transportation Foundation Studies                           | 2.00% |
| 14.5.1                                | Evaluation & Design of Geotechnical Related Structures      | 1.00% |
| 15.1.1                                | Right of Way Surveys  | 3.00% |
| 15.2.1                                | Design Survey   | 3.00% |
| 15.2.2                                | Construction Survey   | 1.00% |
| 15.3.3                                | Terrestrial LiDAR   | 0.20% |
| 15.3.4                                | Mobile LiDAR  | 0.20% |
| 15.3.6                                | Airborne LiDAR  | 0.20% |
| 18.2.1                                | Subsurface Utility Engineering (Utility Eng. Investigation) | 5.00% |
| 18.3.1                                | Utility Adjustment Coordination                             | 1.00% |
| 18.4.1                                | Utility Engineering   | 1.00% |

## Work Categories

**\*Work Categories and Corresponding Percentages Subject to Change Prior to RFP Posting.**

**Reference the RFP for final posting requirements.**

Become Pre-certified:

<https://www.txdot.gov/business/consultants/architectural-engineering-surveying/getting-started/precertification.html>

## Contract Selection Process

### Federal without Interviews – DBE Goal (13.5%)

- 80 working days from kick-off to contract execution.

### Proposal Evaluation

- Proposals are scored independently and used as the basis for selection.
- Past Performance is captured at this Phase.

### Selection

- Top 3 providers.

## Contract Selection Process

**Indefinite  
Deliverable (ID)  
Contract with  
Work Authorizations**

- 3 contracts x \$4 million
- 5 years max contract
- Work Authorizations issued 1<sup>st</sup> 4 years
- Remaining 1 year to complete work issued
- 1<sup>st</sup> Work Authorization assigned to the top-ranked provider
- Following WAs assigned based on qualifications for the specific work, evaluated by TxDOT PM

## Proposal Content

- Provider's proposal responds to "proposal content" paragraph(s) written by CST
- CST determines weights of evaluation criteria, and the max# pages of response allowed

## Evaluation Criteria

|   | Evaluation Criteria                   | Included Elements   | Weighting for Proposal Evaluation |
|---|---------------------------------------|---|-----------------------------------|
| 1 | Technical Approach                    | Project understanding, project approach, innovative concepts or alternatives  | XX*                               |
| 2 | Project Manager's Relevant Experience | Experience with similar or related projects, including both technical and management experience   | XX*                               |
| 3 | Project Planning & Management         | Project staffing and resource management (who, how, and why), communication plan, and quality control procedures. Includes the prime firm's past experience with utilizing subproviders and meeting program goals (HUB or DBE) and/or how it plans to utilize subproviders to meet the goals on this contract. Also may include project scheduling or phasing for SD projects | XX*                               |
| 4 | Key Staff's Relevant Experience       | Experience with similar projects  | XX*                               |
| 5 | Past Performance Score                |   | 5-15*                             |
|   | Total                                 |   | 100                               |

14

**\*Reference the RFP Posting for final requirements.**

## Avoid Disqualifications

### NAICS Codes (DBE Goal)

- Check DBE status
- Ensure subs have correct NAICS codes

### Administrative Qualifications

- Ensure subs for E&D related services are administratively qualified

### Task Leads

- Ensure TLs match on PTC and Proposal
- TLs and their firm must be precertified in their WC

### Attachments

- Do not include extra sheets in your proposal
- Include all required attachments

### Legal Firm Name

- Use legal firm name and ensure that it matches across all proposal documents

## Avoid Disqualifications - Preclusions

**43 TAC §10.6, a Conflict of Interest (COI)** is a circumstance arising out of existing or past activities, business interests, contractual relationships, or organizational structure of an entity and because of which the entity's objectivity in performing the scope of work sought by the Department is or may be otherwise impaired, the entity's ability to give impartial advice or assistance to the Department might be impaired, or because of which the entity has an unfair competitive advantage.

This potential for impartiality includes the entity's overseeing or testing any of their own work.

| Legacy Contract No. | PeopleSoft Solicitation No. | Prime Provider Name              | Subprovider Names   | Type of Contract | Description of Work  |
|---------------------|-----------------------------|----------------------------------|---|------------------|--|
| 48-3IDP5005         | 601CT0000005320             | Kimley-Horn and Associates, Inc. | VRX, Inc.<br>Stantec Consulting Services, Inc.<br>Michael Baker International, Inc.<br>Mesa Integrated Solutions, Inc.<br>Horrocks Engineers, Inc.<br>Gorrondona & Associates, Inc.<br>Bowman Engineering & Consulting, Inc.<br>Bio-West, Inc.<br>GM2 Associates Inc. | Engineering      | Digital Delivery of Transportation Design and Asset Management |
| 48-5IDP5100         | 601CT0000006257             | HNTB Corporation                 | Agha Engineering LLC<br>Rios Engineering, LLC<br>SAM-Construction Services, LLC<br>Sanchez-Salazar & Associates, LLC<br>Survey and Mapping, LLC   | Engineering      | CEC services for the Digital Delivery Program                  |



## **Tentative Procurement Schedule\***

|                                    |                |
|------------------------------------|----------------|
| Pre-RFP Meeting                    | 8/26/2025      |
| Request for Proposal (RFP) Posting | Mid September  |
| Proposal Due                       | Early October  |
| Selection Notification             | Late October   |
| Negotiations Complete              | Early December |
| Contract Execution                 | Late January   |

**\*Reference the RFP Posting for final requirements.**

## Reminders

- ✓ Always refer to the RFP for final instructions
- ✓ Use the Proposal Screening Checklist:  
<https://www.txdot.gov/business/peps/resources.html>
- ✓ Review the Attachments before & after submitting in Bonfire
- ✓ CCIS job aid:  
<https://www.txdot.gov/business/peps/become-precertified.html>
- ✓ Your submittal/proposal can be unsubmitted for a correction or revision before RFP closes
- ✓ If you have questions, follow RFP instructions and ask
- ✓ Check for Addenda and Q&A

## Closing Remarks

This presentation will be posted by Friday, August 29, 2025

Questions regarding this Pre-RFP meeting should be submitted to: Jessica Landry, P.E. at **[Jessica.Landry@txdot.gov](mailto:Jessica.Landry@txdot.gov)** by 5 pm, CST, Tuesday, September 2, 2025.

Relevant Questions received and their response will be posted by Tuesday, September 9, 2025.