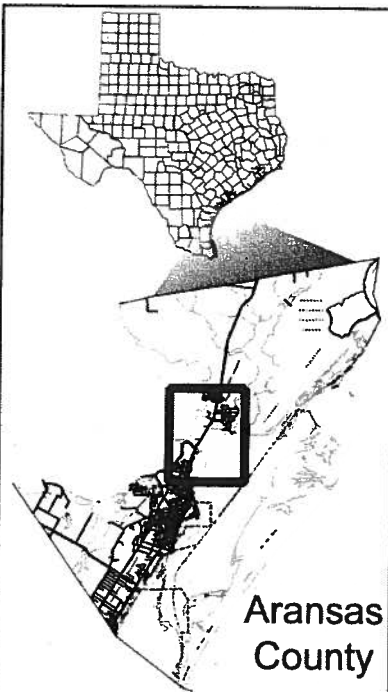
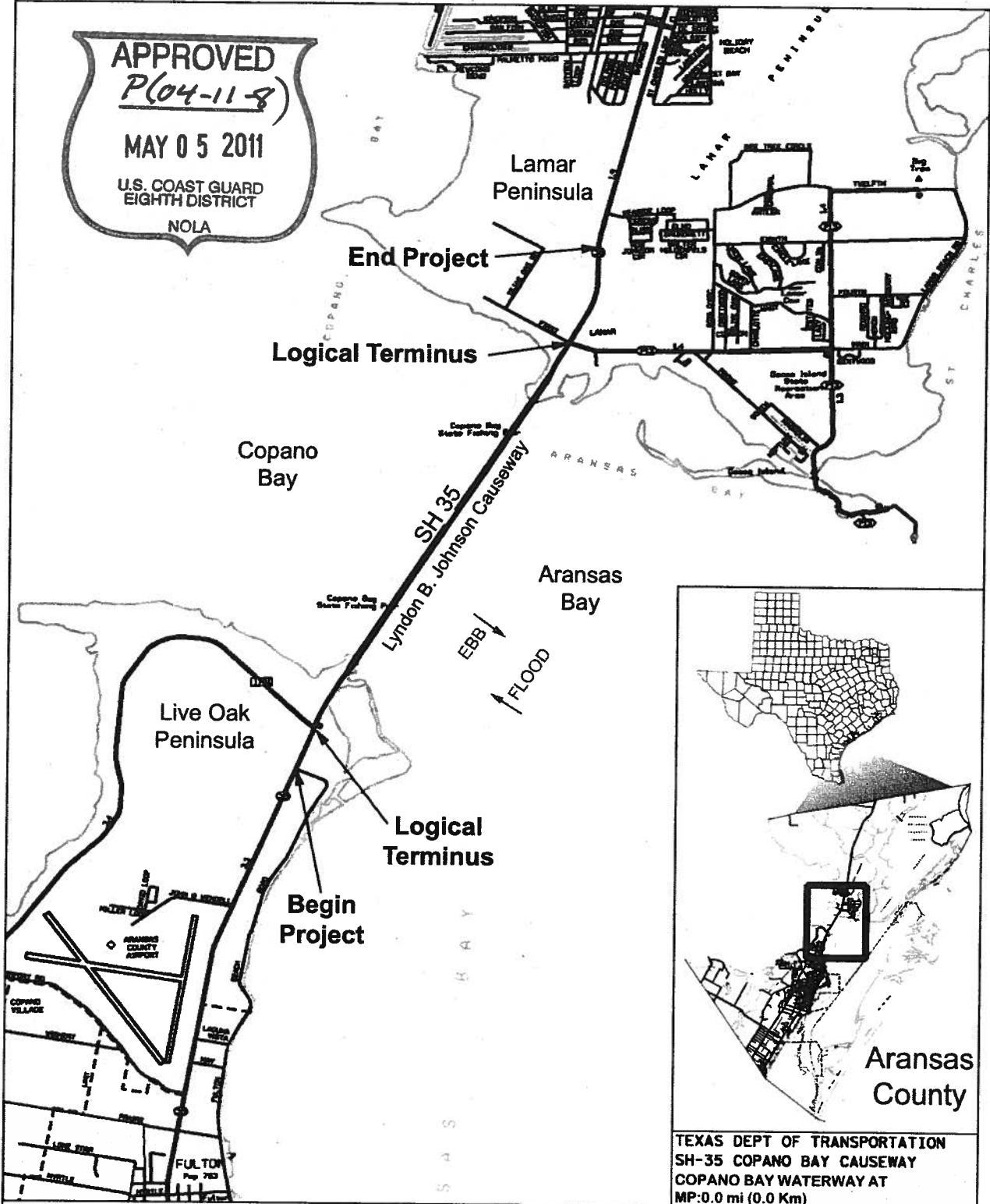


APPROVED
P(04-11-8)
MAY 05 2011
 U.S. COAST GUARD
 EIGHTH DISTRICT
 NOLA

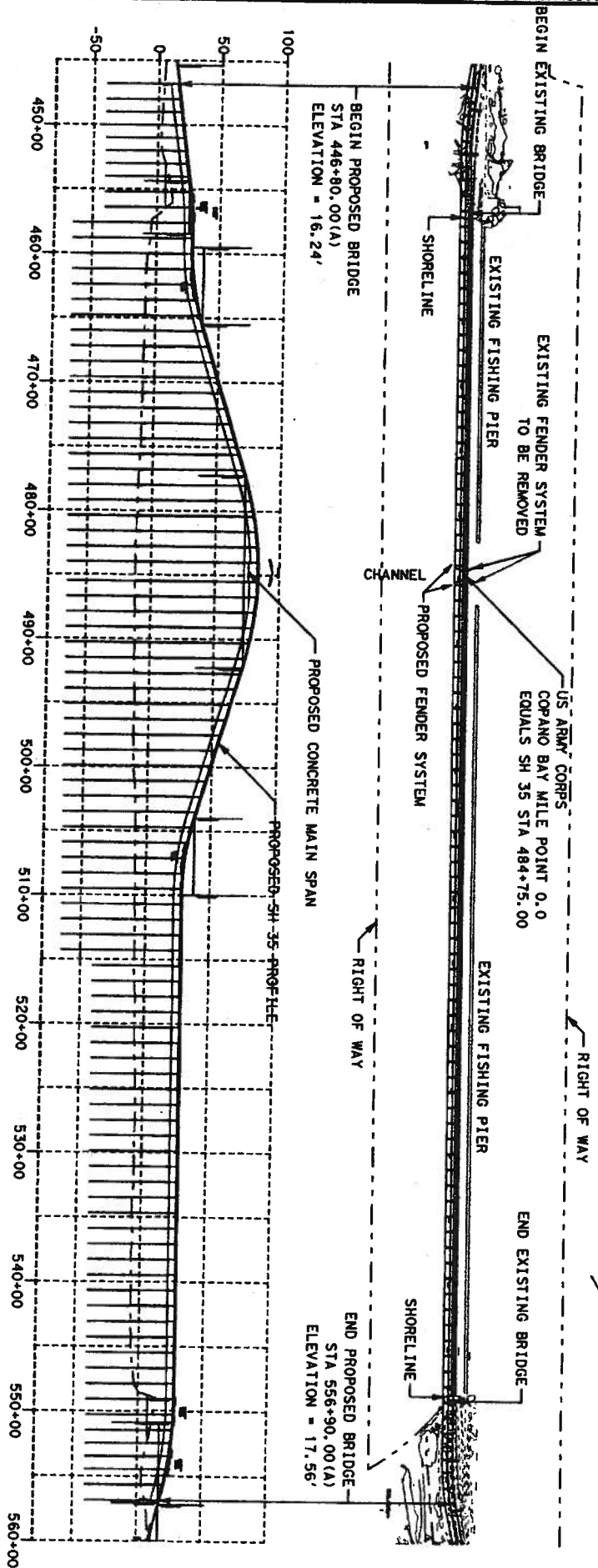


<ftp://ftp2.tnris.org/Transportation/TxDOT/UrbanFiles/dgn/>
 Accessed 10/09



TEXAS DEPT OF TRANSPORTATION
 SH-35 COPANO BAY CAUSEWAY
 COPANO BAY WATERWAY AT
 MP:0.0 mi (0.0 Km)
 ROCKPORT, ARANSAS COUNTY
 TEXAS
 DECEMBER 2010

PROJECT LOCATION



SCALE:



Horizontal Scale: 1" = 1200'

Vertical Scale: 1" = 120'

NOTES

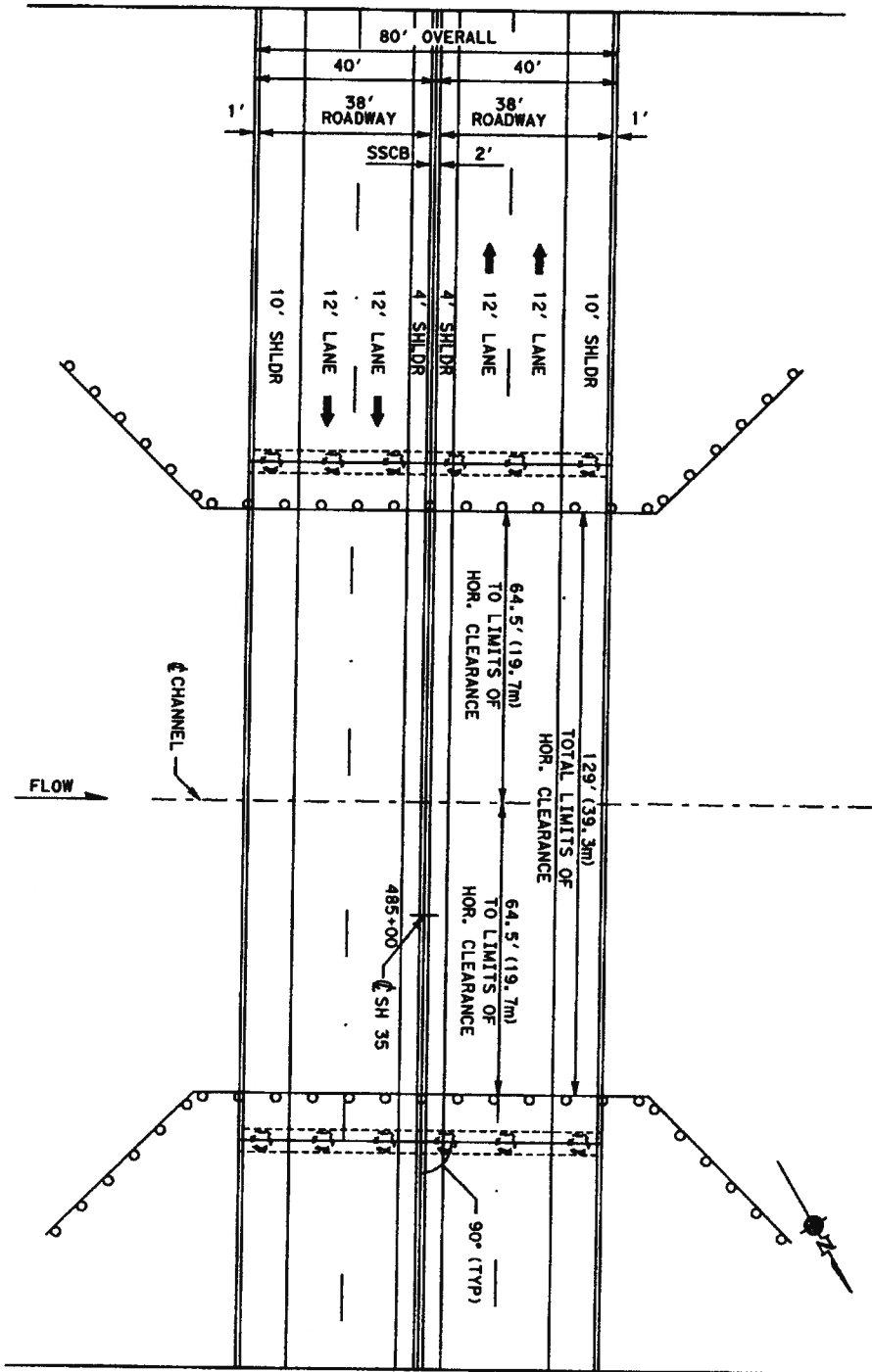
1. ALL ELEVATIONS ARE BASED ON 1988 NAVD DATUM
2. LENGTH OF PROPOSED BRIDGE = 11010.0'
3. MHW ELEVATION = 1.00'
4. MLW ELEVATION = 0.17'
5. 100 YEAR FLOOD ELEV = 7.5'

APPROVED
P(04-11-8)
 MAY 05 2011
 U.S. COAST GUARD
 EIGHTH DISTRICT
 NOLA

TEXAS DEPT OF TRANSPORTATION
 SH-35 COPANO BAY CAUSEWAY
 COPANO BAY WATERWAY AT
 MP+0.0 MI (0.0 KM)
 ROCKPORT, ARKANSAS COUNTY
 TEXAS
 DECEMBER 2010

**PROPOSED BRIDGE
 PLAN AND ELEVATION**

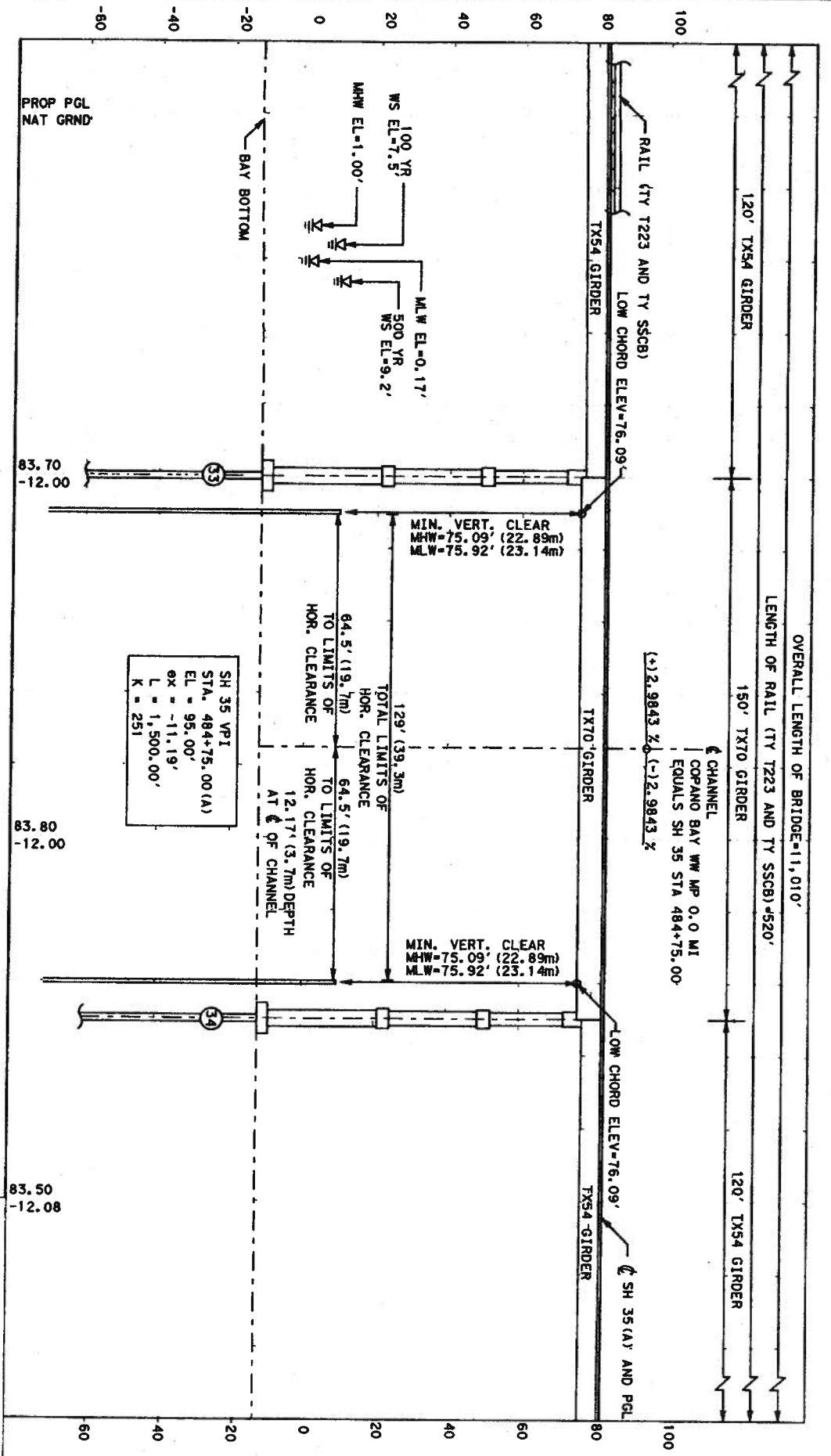
SCALE:
 1" = 40'



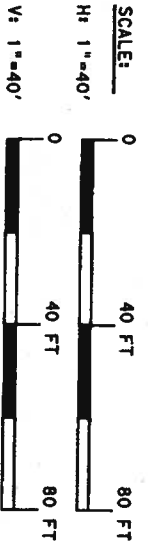
APPROVED
 P(04-11-8)
 MAY 05 2011
 U.S. COAST GUARD
 EIGHTH DISTRICT
 NOLA

TEXAS DEPT OF TRANSPORTATION
 SH-35 COPANO BAY CAUSEWAY
 COPANO BAY WATERWAY AT
 MP+0.0 MI (0.0 KM)
 ROCKPORT, ARANSAS COUNTY
 TEXAS
 DECEMBER 2010

PROPOSED BRIDGE
 MAINSPAN PLAN



SH 35 VPI	STA. 484+75.00 (A)
EL	= 95.00'
gx	= -11.19'
L	= 1,500.00'
K	= 251



APPROVED
P(04-11-8)
 MAY 05 2011
 U.S. COAST GUARD
 EIGHTH DISTRICT
 NOLA

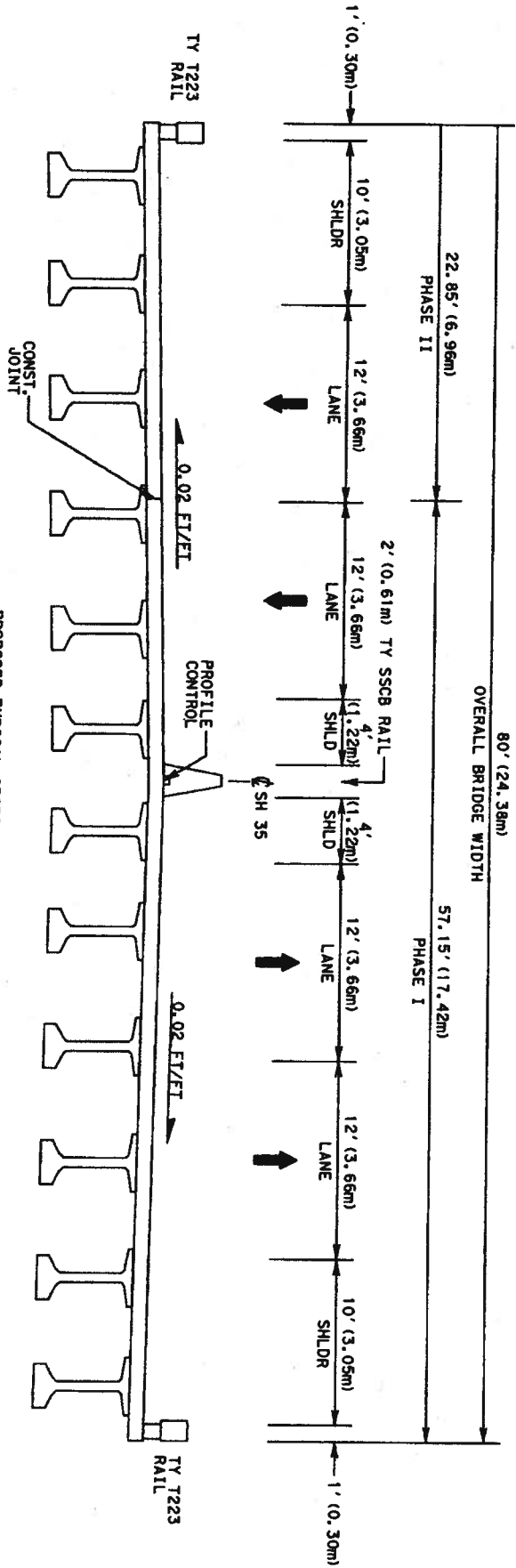
LEGEND
 BAY BOTTOM AT PROP & ---

NOTES

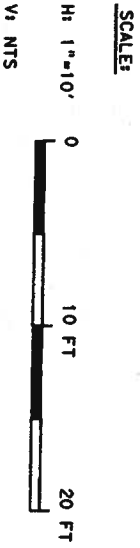
MEAN HIGH WATER (MHW) ELEV. = 1.00'
 MEAN LOW WATER (MLW) ELEV. = 0.17'
 100 YR FLOOD ELEV. = 7.50'
 ALL ELEVATIONS BASED ON 1988 NAVD DATUM
 ALL DIMENSIONS SYMMETRICAL ABOUT CENTERLINE

TEXAS DEPT OF TRANSPORTATION
 SH-35 COPANO BAY CAUSEWAY
 COPANO BAY WATERWAY AT
 MP+0.0 MI (0.0 Km)
 ROCKPORT, ARANSAS COUNTY
 TEXAS
 DECEMBER 2010

**MAINSpan
 CLEARANCE DIAGRAM**



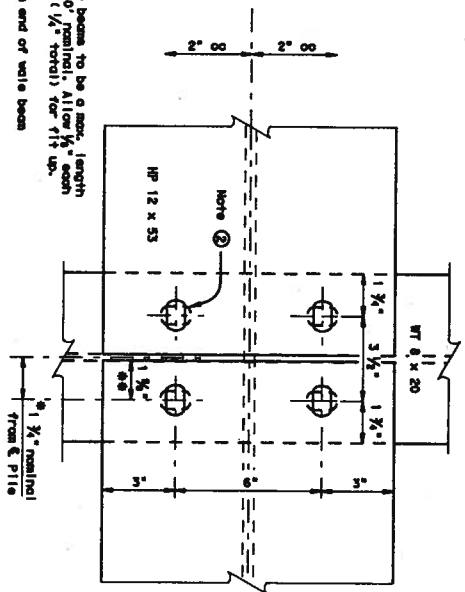
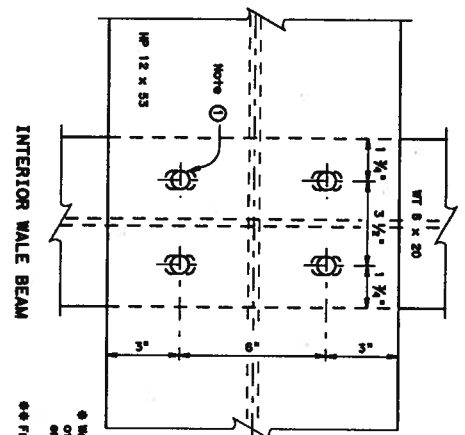
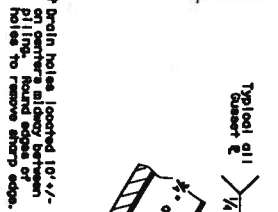
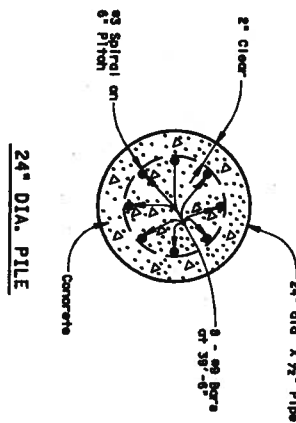
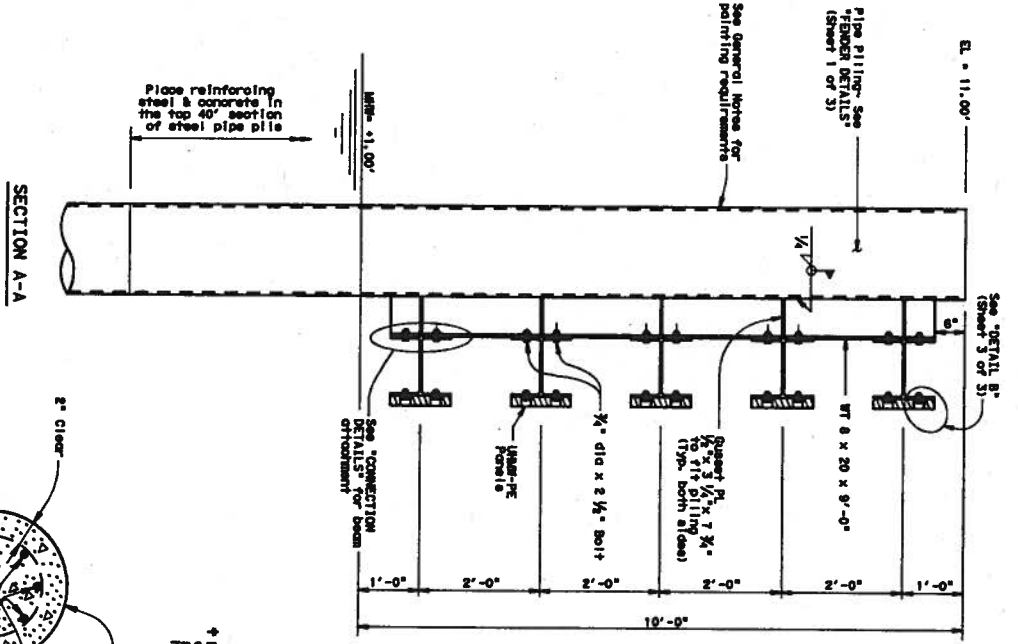
PROPOSED TYPICAL SECTION (MAINSPAN)
 STA 484+00.00(A) TO STA 485+50.00(A)
 (1 SPAN AT 150' CENTERED OVER WATERWAY)



APPROVED
Play-Hi-8
 MAY 05 2011
 U.S. COAST GUARD
 EIGHTH DISTRICT
 NOLA

TEXAS DEPT OF TRANSPORTATION
 SH-35 COPANO BAY CAUSEWAY
 COPANO BAY WATERWAY AT
 MP+0.0 MI (0.0 Km)
 ROCKPORT, ARANSAS COUNTY
 TEXAS
 DECEMBER 2010

PROPOSED TYPICAL
 SECTION



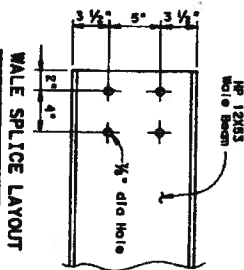
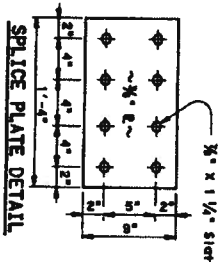
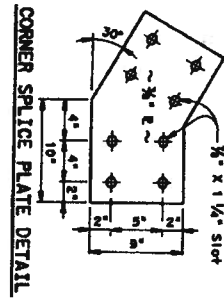
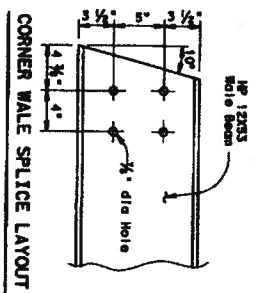
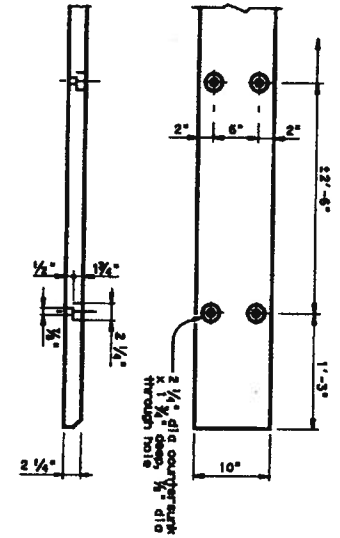
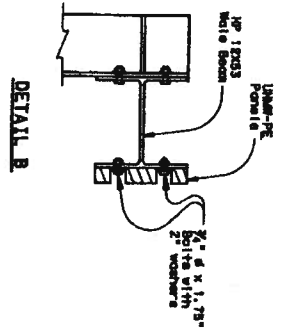
CONNECTION DETAILS

- ① Provide 1/2" dia hole in wale beam, 2 1/2" x 1 1/2" vertical slot in WT for 2 1/2" dia x 2 1/2" bolt
- ② Supply 3/8" x 1 1/2" horizontal slot in wale beam, and supply 3/8" x 1 1/2" vertical slot in WT section for 2 1/2" x 2 1/2" bolt
- ③ Holes for attaching wales to piling may be field drilled to match final piling locations as given. Square drilling operations do not damage protective coating. If damage occurs and the hole is not greater than 1/4" away from edge of hole, repair as specified in the general notes.
- ④ Holes for top and bottom of wale beam web in each location.
- ⑤ See Fender Pile Access sheets for Fender Piling Ladder details.

APPROVED
P/04-11-8
 MAY 05 2011
 U.S. COAST GUARD
 EIGHTH DISTRICT
 NOLA

TEXAS DEPT OF TRANSPORTATION
 SH-35 COPANO BAY CAUSEWAY
 COPANO BAY WATERWAY AT
 MP: 0.0 MI (0.0 KM)
 ROCKPORT, ARANSAS COUNTY
 TEXAS
 DECEMBER 2010

FENDER DETAILS



GENERAL NOTES:
 1. All bolts conforming to ASTM A325 on per bid. The bolts shall be installed in accordance with Item 446.
 2. All bolts shall be installed in accordance with Item 446.
 3. All bolts shall be installed in accordance with Item 446.
 4. All bolts shall be installed in accordance with Item 446.
 5. All bolts shall be installed in accordance with Item 446.
 6. All bolts shall be installed in accordance with Item 446.
 7. All bolts shall be installed in accordance with Item 446.
 8. All bolts shall be installed in accordance with Item 446.
 9. All bolts shall be installed in accordance with Item 446.
 10. All bolts shall be installed in accordance with Item 446.

Shop joint steel prior to engaging with a Special Protection System in accordance with Item 446.
 Cleaning and Painting Steel: The steel shall be cleaned and painted in accordance with Item 446.
 - Prepare steel surfaces in accordance with Item 446.
 - Apply primer in accordance with Item 446.
 - Apply paint in accordance with Item 446.
 - Apply second coat in accordance with Item 446.
 - Apply third coat in accordance with Item 446.
 - Apply fourth coat in accordance with Item 446.
 - Apply fifth coat in accordance with Item 446.
 - Apply sixth coat in accordance with Item 446.
 - Apply seventh coat in accordance with Item 446.
 - Apply eighth coat in accordance with Item 446.
 - Apply ninth coat in accordance with Item 446.
 - Apply tenth coat in accordance with Item 446.

Prior to welding, blast clean within one inch of the weld to the requirements of Class A Cleaning and Painting Steel, in Item 446. Cleaning and painting steel shall be done on the order blast and over the area with marine finish on grade epoxy 10:0 MILS DFT.
 Repair any coating damaged during construction in accordance with Item 446. Cleaning and Painting Steel shall be finished with a wet film recommendation.
 After the fender system is assembled, the piling shall be filled with concrete as shown in the plans.
 All splice plate bolts shall be 3/4" dia x 2 1/2".
 Fender panels shall be block.
 Offset steel light splice locations so as not to occur on the same location as the wale splice above and below.

APPROVED
P(04-11-8)
 MAY 05 2011
 U.S. COAST GUARD
 EIGHTH DISTRICT
 NOLA

TEXAS DEPT OF TRANSPORTATION
 SH-35 COPANO BAY CAUSEWAY
 COPANO BAY WATERWAY AT
 MP±0.0 MI (0.0 Km)
 ROCKPORT, ARANSAS COUNTY
 TEXAS
 DECEMBER 2010

FENDER DETAILS

SHEET 8 OF 8