

PROJECT LOCATION MAP  
NOT TO SCALE

PUBLIC HEARING  
FEBRUARY 18, 2015

RURAL PRINCIPAL ARTERIAL  
DESIGN SPEED:  
MAIN LANES 70 MPH  
RAMPS 50 MPH

0 200 400 600

NOT A BIDDING DOCUMENT  
MOHAMMAD SALEEM P.E.  
82074  
TEXAS REGISTRATION NUMBER  
2/16/2015  
DATE

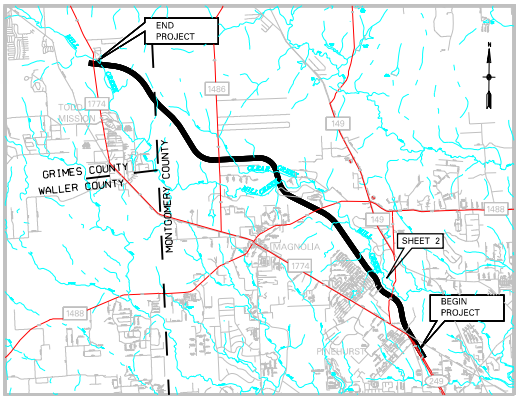
LEGEND		
PLAN LEGEND		
SYMBOL	LINE WT.	COLOR CODE
MAIN LANES	SHADE	MAGENTA 5
BRIDGES	SHADE	BLACK 0
INTERSECTING ROADS AND TURNAROUNDS	SHADE	BLUE 1
RAMPS	3	RED 3
EXISTING RDWY TO BE REMOVED	0	BLACK 0
EXISTING RDWY TO REMAIN	0	GREEN 1
EMBANKMENT	2	RED 3
CONTROL OF ACCESS	3	RED 3
PROP ROW	5	BLACK 0
EXISTING ROW/PROPERTY LINES	6	BLACK 0
ACCESS ROAD	1	BLUE 1
PLANIMETRIC	0	GREEN 2
TRAFFIC COUNT YEAR (2035) DHV	0	BLACK 0
EXISTING LANE DIRECTIONAL INDICATOR	1	BLACK 0
PROPOSED LANE DIRECTIONAL INDICATOR	1	BLACK 0
DIRECT CONNECTOR	4	ORANGE 6
DEPRESSED	2	RED 3
FUTURE	1	BLUE 1
RETAINING WALL	4	RED 3
STRIPING	0	ORANGE 6
HIGH OCCUPANCY VEHICLE	5	TURQUOISE 135
OVERHEAD EXPRESSWAY LANES	5	BROWN 142
TEMPORARY CONNECTIONS	4	PURPLE 37
RDWY UNDER CONSTRUCTION	2	LT GREEN 11
RECOMMENDED NOISE ABATEMENT WALL	4	PURPLE 101
TOLL COLLECTION POINT	4	RED 3
DIRECTION OF FLOW	0	MAGENTA 5
PIPELINE	3	ORANGE 6

PROFILE LEGEND		
PROPOSED PCL	---	
EXISTING GROUND (PCL)	---	
EXISTING GROUND (ROW)	---	
100 YEAR WATER SURFACE ELEVATION	---	

JACOBS  
F-2966

SCHEMATIC LAYOUT  
MONTGOMERY & GRIMES COUNTIES  
STATE HIGHWAY 249  
FROM: FM 1774/FM 149 IN PINEHURST  
TO: FM 1774 IN TODD MISSION  
SHEET 1 OF 8  
DATE: 2/16/2015  
APPROVED: [Signature]  
REVISION: [Signature]





PROJECT LOCATION MAP  
NOT TO SCALE

## PUBLIC HEARING FEBRUARY 18, 2015

RURAL PRINCIPAL ARTERIAL  
DESIGN SPEED:  
MAIN LANES 70 MPH  
RAMPS 50 MPH

0 200 400 600

NOT A BIDDING DOCUMENT

MOHAMMAD SALEEM P.E.  
82074  
TEXAS REGISTRATION NUMBER  
2/16/2015  
DATE

### LEGEND

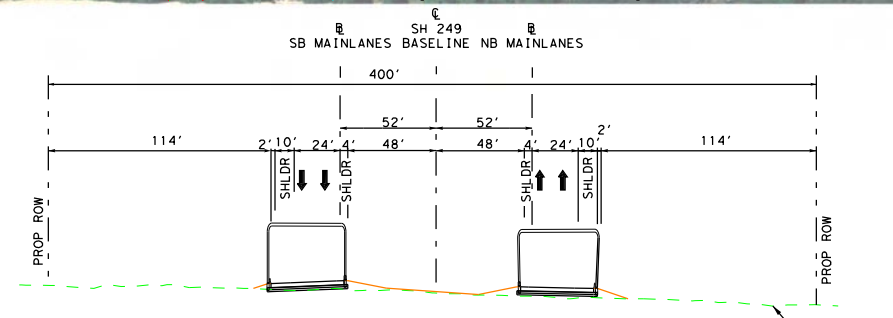
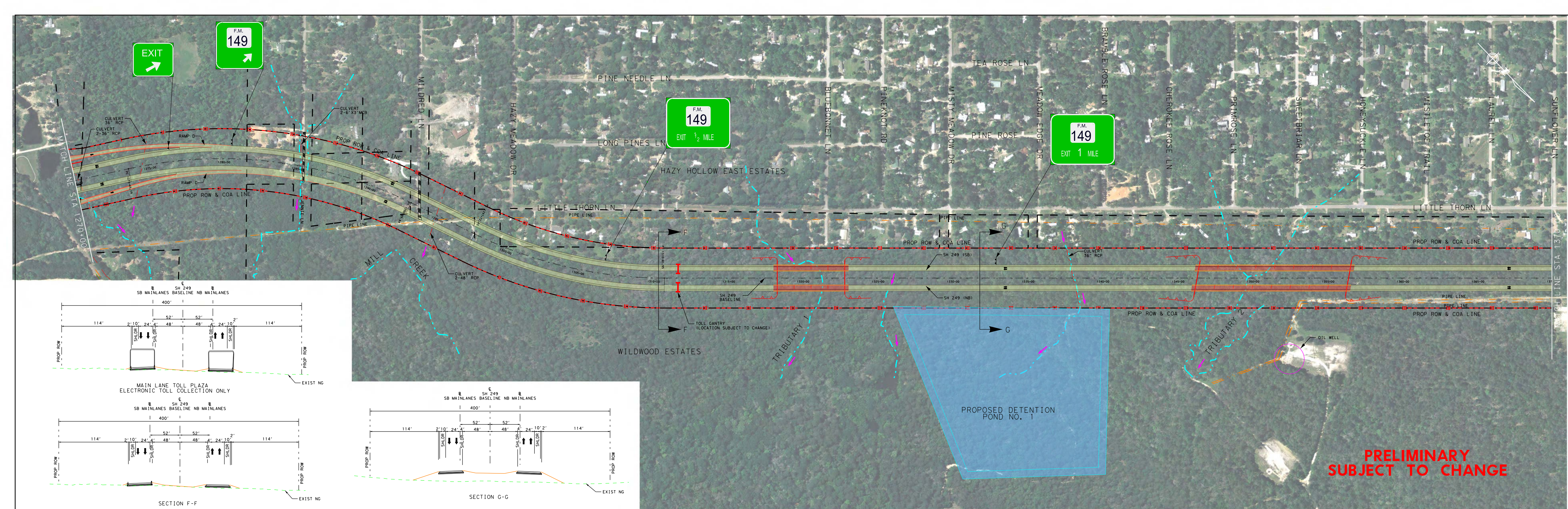
SYMBOL	LINE WT.	COLOR	CODE
MAIN LANES	SHADE	MAGENTA	5
BRIDGES	SHADE	BLACK	0
INTERSECTING ROADS AND TURNAROUNDS	SHADE	BLUE	1
RAMPS	3	RED	3
EXISTING RDWY TO BE REMOVED	0	BLACK	0
EXISTING RDWY TO REMAIN	0	GREEN	1
EMBANKMENT	2	RED	3
CONTROL OF ACCESS	3	RED	3
PROP ROW	5	BLACK	0
EXISTING ROW/PROPERTY LINES	6	BLACK	0
ACCESS ROAD	1	BLUE	1
PLANIMETRIC	0	GREEN	2
TRAFFIC COUNT YEAR (2035) DHV	0	BLACK	0
EXISTING LANE DIRECTIONAL INDICATOR	1	BLACK	0
PROPOSED LANE DIRECTIONAL INDICATOR	1	BLACK	0
DIRECT CONNECTOR	4	ORANGE	6
DEPRESSED	2	RED	3
FUTURE	1	BLUE	1
RETAINING WALL	4	RED	3
STRIPING	0	ORANGE	6
HIGH OCCUPANCY VEHICLE	5	TURQUOISE	135
OVERHEAD EXPRESSWAY LANES	5	BROWN	142
TEMPORARY CONNECTIONS	4	PURPLE	37
RDWY. UNDER CONSTRUCTION	2	LT GREEN	11
RECOMMENDED NOISE ABATEMENT WALL	4	PURPLE	101
TOLL COLLECTION POINT	4	RED	3
DIRECTION OF FLOW	0	MAGENTA	5
PIPELINE	3	ORANGE	6

### PROFILE LEGEND

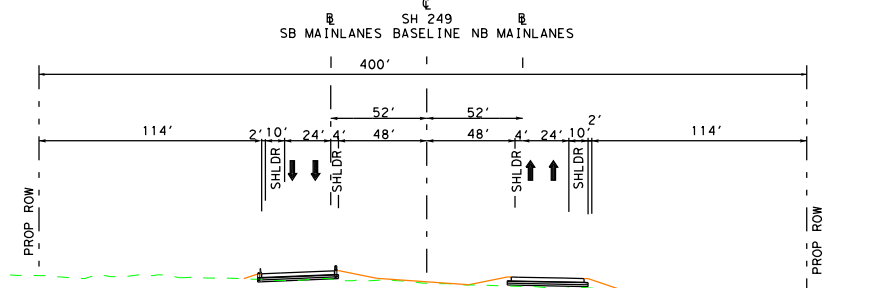
PROPOSED PGL  
EXISTING GROUND (PGL)  
EXISTING GROUND (ROW)  
100 YEAR WATER SURFACE ELEVATION

**JACOBS**  
F-2966

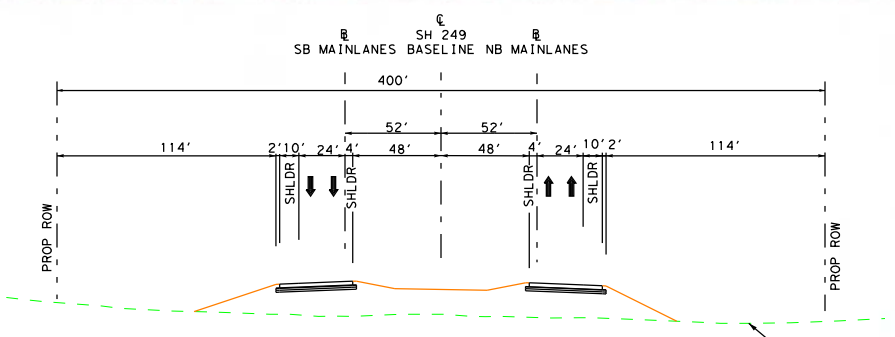
SCHEMATIC LAYOUT  
MONTGOMERY & GRIMES COUNTIES  
STATE HIGHWAY 249  
FROM: FM 1774/FM 149 IN PINEHURST  
TO: FM 1774 IN TODD MISSION  
SHEET 2 OF 8  
DATE: 2/16/2015  
APPROVED: [Signature]  
REVISION: [Signature]  
HOUSTON DISTRICT



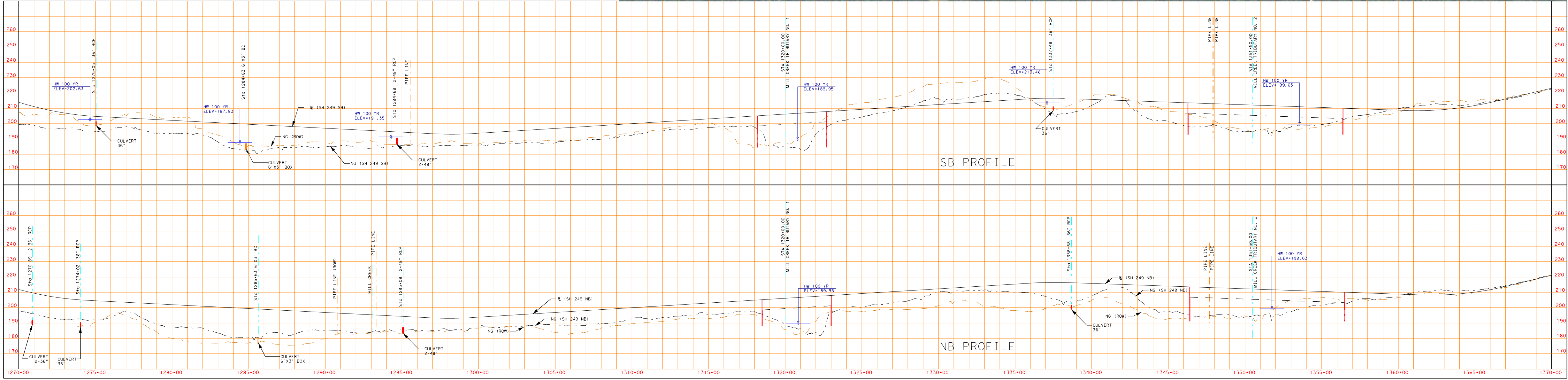
MAIN LANE TOLL PLAZA  
ELECTRONIC TOLL COLLECTION ONLY



SECTION F-F



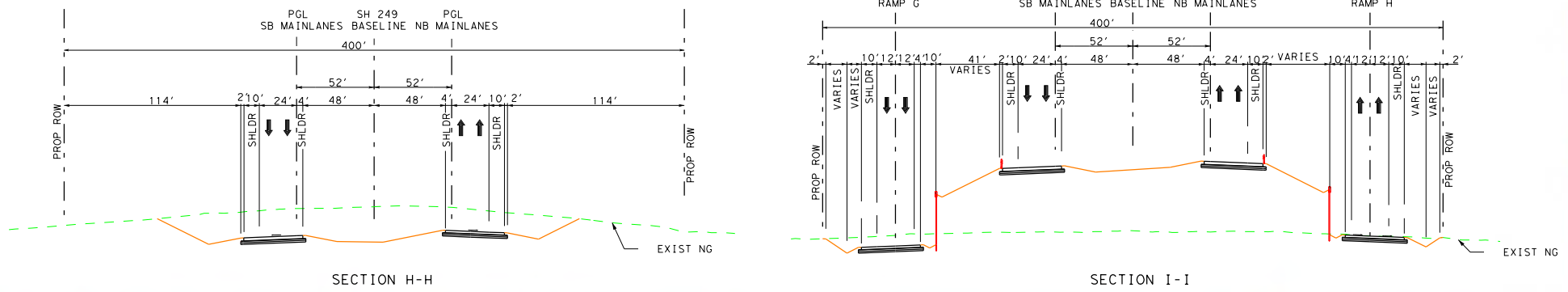
SECTION G-G



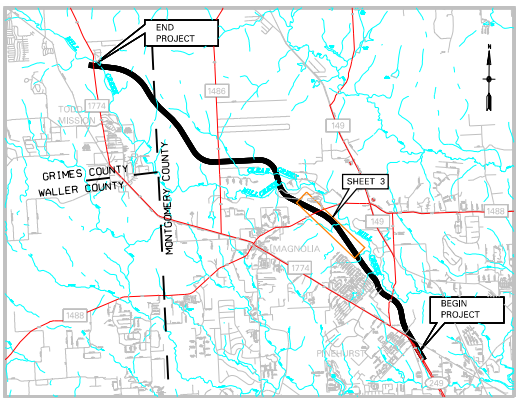
SB PROFILE

NB PROFILE





PRELIMINARY  
SUBJECT TO CHANGE



PROJECT LOCATION MAP  
NOT TO SCALE

PUBLIC HEARING  
FEBRUARY 18, 2015

RURAL PRINCIPAL ARTERIAL  
DESIGN SPEED:  
MAIN LANES 70 MPH  
RAMPS 50 MPH

0 200 400 600

NOT A BIDDING DOCUMENT  
MOHAMMAD SALEEM P.E.  
82074  
TEXAS REGISTRATION NUMBER  
2/16/2015  
DATE

LEGEND

SYMBOL	LINE WT.	COLOR CODE
MAIN LANES	SHADE	MAGENTA 5
BRIDGES	SHADE	BLACK 0
INTERSECTING ROADS AND TURNAROUNDS	SHADE	BLUE 1
RAMPS	3	RED 3
EXISTING RDWY TO BE REMOVED	0	BLACK 0
EXISTING RDWY TO REMAIN	0	GREEN 1
EMBANKMENT	2	RED 3
CONTROL OF ACCESS	3	RED 3
PROP ROW	5	BLACK 0
EXISTING ROW/PROPERTY LINES	6	BLACK 0
ACCESS ROAD	1	BLUE 1
PLANIMETRIC	0	GREEN 2
TRAFFIC COUNT YEAR (2035) DHV	0	BLACK 0
EXISTING LANE DIRECTIONAL INDICATOR	1	BLACK 0
PROPOSED LANE DIRECTIONAL INDICATOR	1	BLACK 0
DIRECT CONNECTOR	4	ORANGE 6
DEPRESSED	2	RED 3
FUTURE	1	BLUE 1
RETAINING WALL	4	RED 3
STRIPING	0	ORANGE 6
HIGH OCCUPANCY VEHICLE	5	TURQUOISE 135
OVERHEAD EXPRESSWAY LANES	5	BROWN 142
TEMPORARY CONNECTIONS	4	PURPLE 37
RDWY. UNDER CONSTRUCTION	2	LT GREEN 11
RECOMMENDED NOISE ABATEMENT WALL	4	PURPLE 101
TOLL COLLECTION POINT	4	RED 3
DIRECTION OF FLOW	0	MAGENTA 5
PIPELINE	3	ORANGE 6

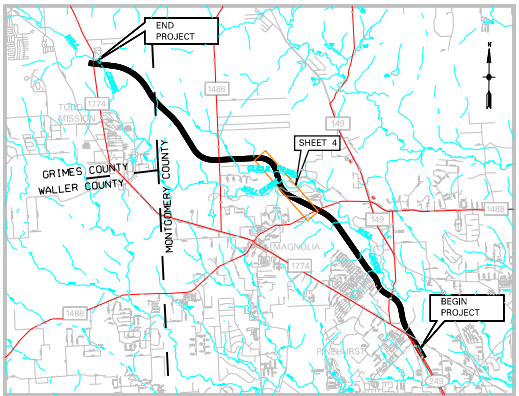
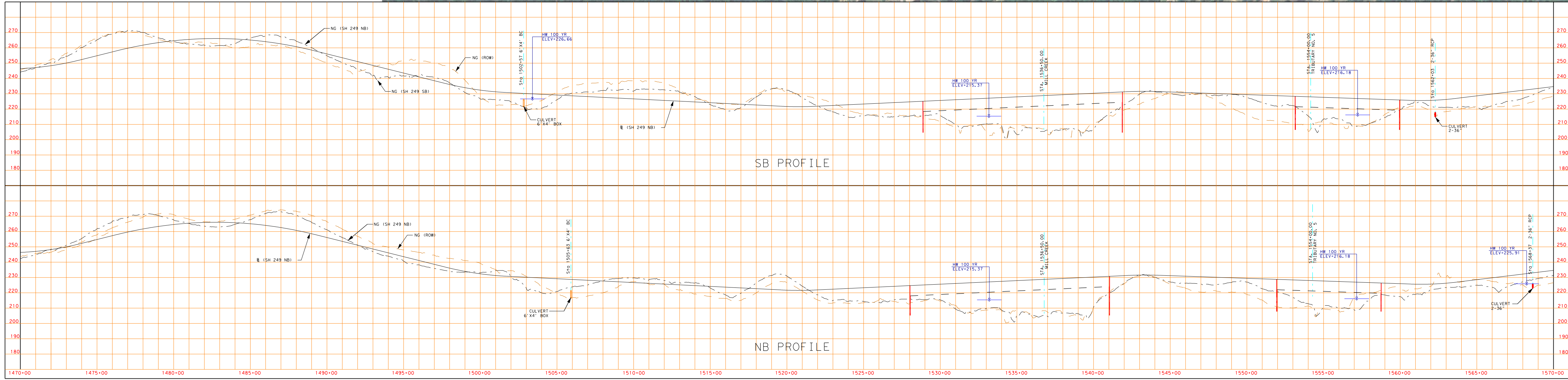
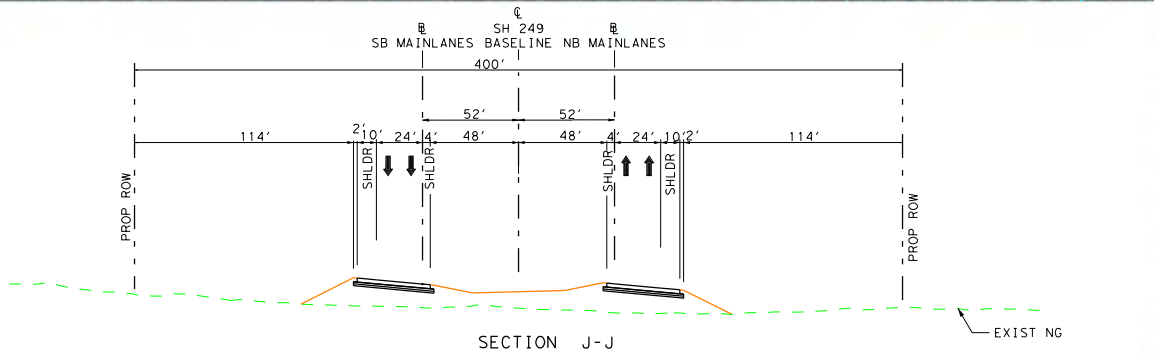
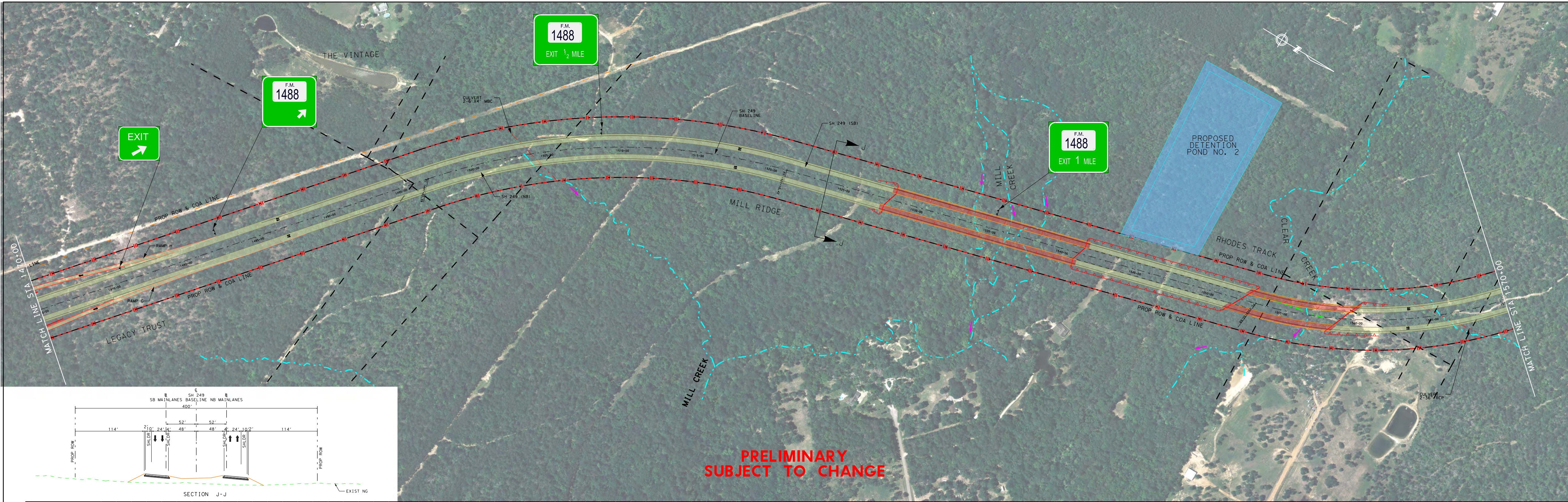
PROFILE LEGEND

PROPOSED PGL  
EXISTING GROUND (PGL)  
EXISTING GROUND (ROW)  
100 YEAR WATER SURFACE ELEVATION

JACOBS  
F-2966

SCHEMATIC LAYOUT  
MONTGOMERY & GRIMES COUNTIES  
STATE HIGHWAY 249  
FROM: FM 1774/FM 149 IN PINEHURST  
TO: FM 1774 IN TODD MISSION  
SHEET 3 OF 8  
DATE: 2/16/2015  
APPROVED: [Signature]  
REVISION: [Signature]  
HOUSTON DISTRICT





PROJECT LOCATION MAP  
NOT TO SCALE

## PUBLIC HEARING

FEBRUARY 18, 2015

RURAL PRINCIPAL ARTERIAL  
DESIGN SPEED:  
MAIN LANES 70 MPH  
RAMPS 50 MPH

0 200 400 600

NOT A BIDDING DOCUMENT

MOHAMMAD SALEEM P.E.  
82074  
TEXAS REGISTRATION NUMBER  
2/16/2015  
DATE

### LEGEND

SYMBOL	LINE WT.	COLOR	CODE
MAIN LANES	SHADE	MAGENTA	5
BRIDGES	SHADE	BLACK	0
INTERSECTING ROADS AND TURNAROUNDS	SHADE	BLUE	1
RAMPS	3	RED	3
EXISTING RDWY TO BE REMOVED	0	BLACK	0
EXISTING RDWY TO REMAIN	0	GREEN	1
EMBANKMENT	2	RED	3
CONTROL OF ACCESS	3	RED	3
PROPOSED ROW	5	BLACK	0
EXISTING ROW/PROPERTY LINES	6	BLACK	0
ACCESS ROAD	1	BLUE	1
PLANIMETRIC	0	GREEN	2
TRAFFIC COUNT YEAR (2035) DHV	0	BLACK	0
EXISTING LANE DIRECTIONAL INDICATOR	1	BLACK	0
PROPOSED LANE DIRECTIONAL INDICATOR	1	BLACK	0
DIRECT CONNECTOR	4	ORANGE	6
DEPRESSED	2	RED	3
FUTURE	1	BLUE	1
RETAINING WALL	4	RED	3
STRIPING	0	ORANGE	6
HIGH OCCUPANCY VEHICLE	5	TURQUOISE	135
OVERHEAD EXPRESSWAY LANES	5	BROWN	142
TEMPORARY CONNECTIONS	4	PURPLE	37
RDWY. UNDER CONSTRUCTION	2	LT GREEN	11
RECOMMENDED NOISE ABATEMENT WALL	4	PURPLE	101
TOLL COLLECTION POINT	4	RED	3
DIRECTION OF FLOW	0	MAGENTA	5
PIPELINE	3	ORANGE	6

### PROFILE LEGEND

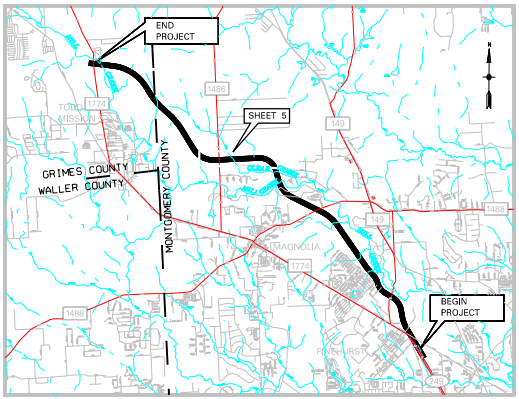
PROPOSED PGL  
EXISTING GROUND (PGL)  
EXISTING GROUND (ROW)  
100 YEAR WATER SURFACE ELEVATION

# JACOBS

F-2966

SCHEMATIC LAYOUT  
MONTGOMERY & GRIMES COUNTIES  
STATE HIGHWAY 249  
FROM: FM 1774/FM 49 IN PINEHURST  
TO: FM 1774 IN 1000 MISSION  
SHEET 4 OF 8  
HOUSTON DISTRICT





PROJECT LOCATION MAP  
NOT TO SCALE

## PUBLIC HEARING FEBRUARY 18, 2015

RURAL PRINCIPAL ARTERIAL  
DESIGN SPEED:  
MAIN LANES 70 MPH  
RAMPS 50 MPH

0 200 400 600

NOT A BIDDING DOCUMENT  
MOHAMMAD SALEEM P.E.  
82074  
TEXAS REGISTRATION NUMBER  
2/16/2015  
DATE

### LEGEND

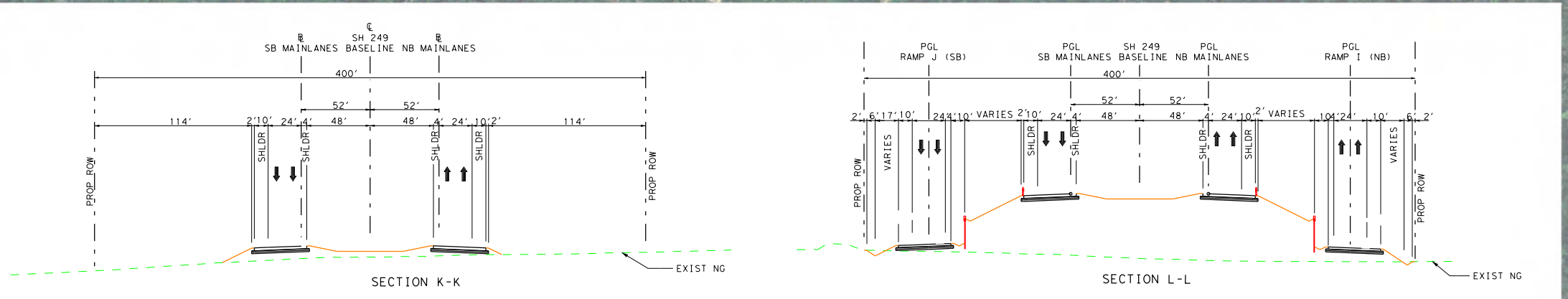
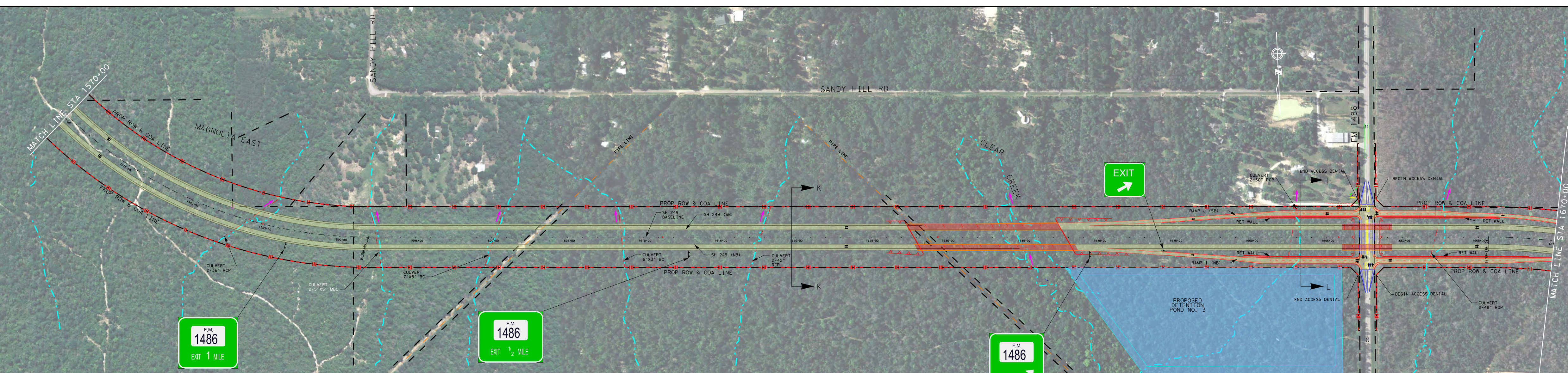
SYMBOL	LINE WT.	COLOR CODE
MAIN LANES	SHADE	MAGENTA 5
BRIDGES	SHADE	BLACK 0
INTERSECTING ROADS AND TURNAROUNDS	SHADE	BLUE 1
RAMPS	3	RED 3
EXISTING RDWY TO BE REMOVED	0	BLACK 0
EXISTING RDWY TO REMAIN	0	GREEN 1
EMBANKMENT	2	RED 3
CONTROL OF ACCESS	3	RED 3
PROP ROW	5	BLACK 0
EXISTING ROW/PROPERTY LINES	6	BLACK 0
ACCESS ROAD	1	BLUE 1
PLANIMETRIC	0	GREEN 2
TRAFFIC COUNT YEAR (2035) DHV	0	BLACK 0
EXISTING LANE DIRECTIONAL INDICATOR	1	BLACK 0
PROPOSED LANE DIRECTIONAL INDICATOR	4	BLACK 0
DIRECT CONNECTOR	4	ORANGE 6
DEPRESSED	2	RED 3
FUTURE	1	BLUE 1
RETAINING WALL	4	RED 3
STRIPING	0	ORANGE 6
HIGH OCCUPANCY VEHICLE	5	TURQUOISE 135
OVERHEAD EXPRESSWAY LANES	5	BROWN 142
TEMPORARY CONNECTIONS	4	PURPLE 37
RDWY. UNDER CONSTRUCTION	2	LT GREEN 11
RECOMMENDED NOISE ABATEMENT WALL	4	PURPLE 101
TOLL COLLECTION POINT	4	RED 3
DIRECTION OF FLOW	0	MAGENTA 5
PIPELINE	3	ORANGE 6

### PROFILE LEGEND

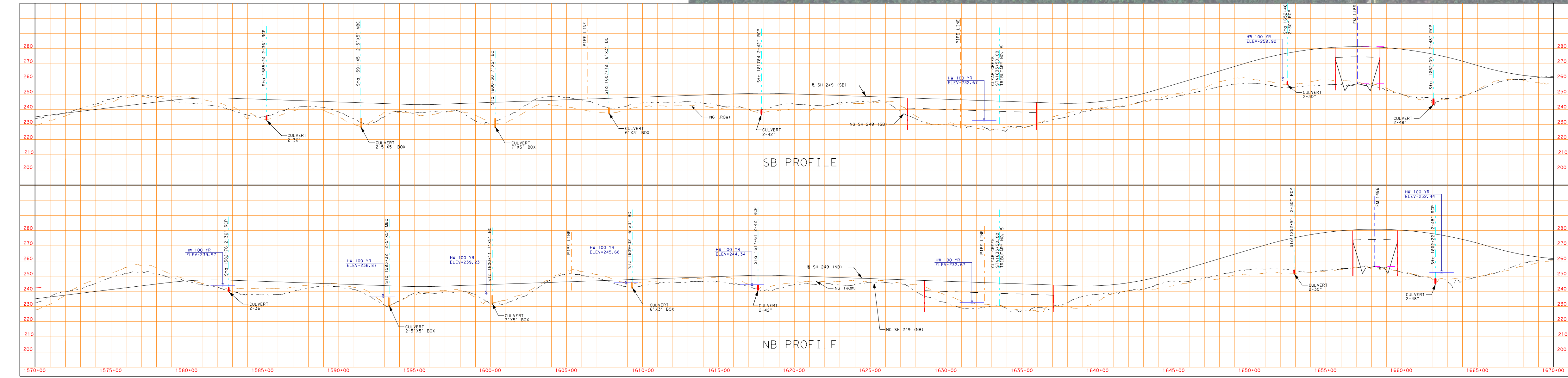
PROPOSED PGL  
EXISTING GROUND (PGL)  
EXISTING GROUND (ROW)  
100 YEAR WATER SURFACE ELEVATION

**JACOBS**  
F-2966

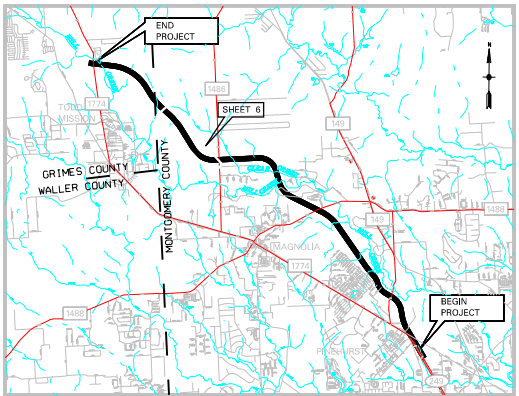
SCHEMATIC LAYOUT  
MONTGOMERY & GRIMES COUNTIES  
STATE HIGHWAY 249  
FROM: FM 1774/FM149 IN PINEHURST  
TO: FM 1774 IN 1000 MISSION  
SHEET 5 OF 8  
DATE: 2/16/2015  
APPROVED: [Signature]  
REVISION: [Signature]



PRELIMINARY  
SUBJECT TO CHANGE







PROJECT LOCATION MAP  
NOT TO SCALE

PUBLIC HEARING  
FEBRUARY 18, 2015

RURAL PRINCIPAL ARTERIAL  
DESIGN SPEED:  
MAIN LANES 70 MPH  
RAMPS 50 MPH

0 200 400 600

NOT A BIDDING DOCUMENT

MOHAMMAD SALEEM P.E.  
82074  
TEXAS REGISTRATION NUMBER  
2/16/2015  
DATE

#### LEGEND

SYMBOL	LINE WT.	COLOR CODE
MAIN LANES	SHADE	MAGENTA 5
BRIDGES	SHADE	BLACK 0
INTERSECTING ROADS AND TURNAROUNDS	SHADE	BLUE 1
RAMPS	3	RED 3
EXISTING RDWY TO BE REMOVED	0	BLACK 0
EXISTING RDWY TO REMAIN	2	RED 3
CONTROL OF ACCESS	3	RED 3
PROP ROW	5	BLACK 0
EXISTING ROW/PROPERTY LINES	6	BLACK 0
ACCESS ROAD	1	BLUE 1
PLANIMETRIC	0	GREEN 2
TRAFFIC COUNT YEAR (2035) DHV	0	BLACK 0
EXISTING LANE DIRECTIONAL INDICATOR	1	BLACK 0
PROPOSED LANE DIRECTIONAL INDICATOR	4	ORANGE 6
DIRECT CONNECTOR	2	RED 3
DEPRESSED	1	BLUE 1
FUTURE	4	RED 3
RETAINING WALL	0	ORANGE 6
STRIPING	5	TURQUOISE 135
HIGH OCCUPANCY VEHICLE	5	BROWN 142
OVERHEAD EXPRESSWAY LANES	4	PURPLE 37
TEMPORARY CONNECTIONS	2	LT GREEN 11
RDWY. UNDER CONSTRUCTION	4	PURPLE 101
RECOMMENDED NOISE ABATEMENT WALL	4	RED 3
TOLL COLLECTION POINT	3	ORANGE 6
DIRECTION OF FLOW	0	MAGENTA 5
PIPELINE	3	ORANGE 6

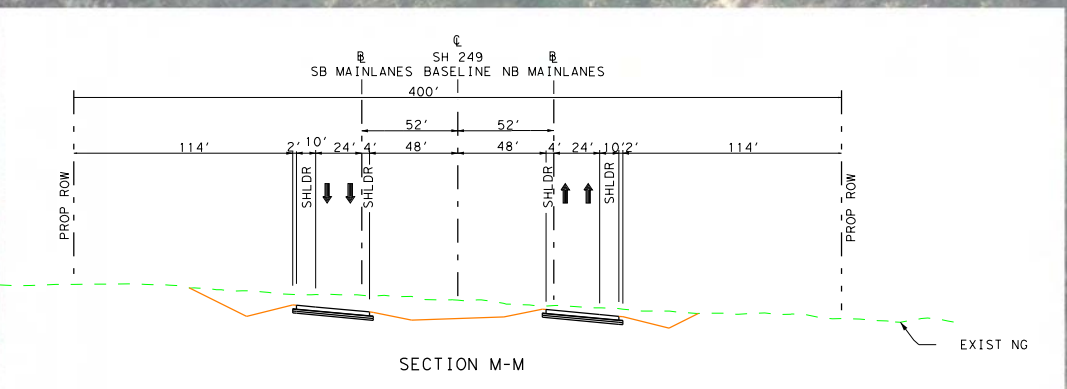
#### PROFILE LEGEND

PROPOSED POL  
EXISTING GROUND (POL)  
EXISTING GROUND (ROW)  
100 YEAR WATER SURFACE ELEVATION

JACOBS  
F-2966

SCHEMATIC LAYOUT  
MONTGOMERY & GRIMES COUNTIES  
STATE HIGHWAY 249  
FROM: FM 1774/FM149 IN PINEHURST  
TO: FM 1774 IN 1000 MISSION  
SHEET 6 OF 8  
DATE: APPROVED: REVISION: APPROVAL: DATE:

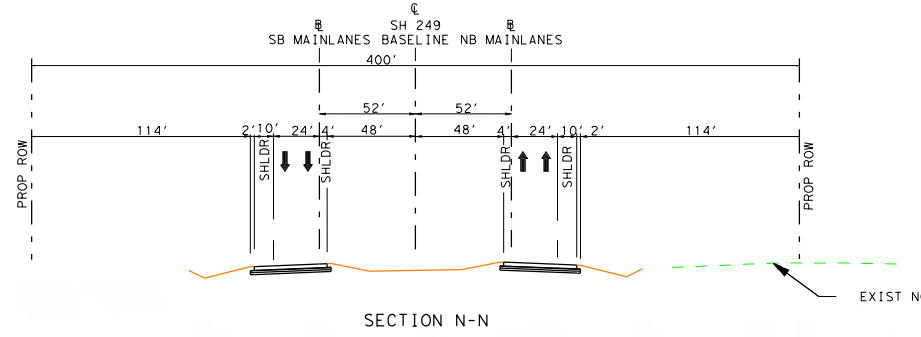
PRELIMINARY  
SUBJECT TO CHANGE



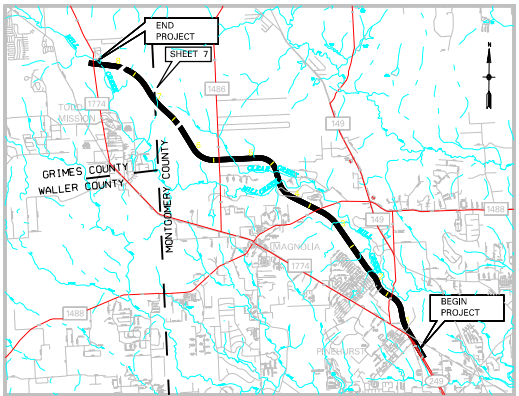
SB PROFILE

NB PROFILE





PRELIMINARY  
SUBJECT TO CHANGE



PROJECT LOCATION MAP  
NOT TO SCALE

PUBLIC HEARING  
FEBRUARY 18, 2015

RURAL PRINCIPAL ARTERIAL  
DESIGN SPEED:  
MAIN LANES 70 MPH  
RAMP 50 MPH

0 200 400 600

NOT A BIDDING DOCUMENT

MOHAMMAD SALEEM P.E.  
82074  
TEXAS REGISTRATION NUMBER  
2/16/2015  
DATE

LEGEND

SYMBOL	LINE WT.	COLOR CODE
MAIN LANES	SHADE	MAGENTA 5
BRIDGES	SHADE	BLACK 0
INTERSECTING ROADS AND TURNAROUNDS	SHADE	BLUE 1
RAMP	3	RED 3
EXISTING RDWY TO BE REMOVED	0	BLACK 0
EXISTING RDWY TO REMAIN	0	GREEN 1
EMBANKMENT	2	RED 3
CONTROL OF ACCESS	3	RED 3
PROP ROW	5	BLACK 0
EXISTING ROW/PROPERTY LINES	6	BLACK 0
ACCESS ROAD	1	BLUE 1
PLANIMETRIC	0	GREEN 2
TRAFFIC COUNT YEAR (2035) DHV	0	BLACK 0
EXISTING LANE DIRECTIONAL INDICATOR	1	BLACK 0
PROPOSED LANE DIRECTIONAL INDICATOR	1	BLACK 0
DIRECT CONNECTOR	4	ORANGE 6
DEPRESSED	2	RED 3
FUTURE	1	BLUE 1
RETAINING WALL	4	RED 3
STRIPING	0	ORANGE 6
HIGH OCCUPANCY VEHICLE	5	TURQUOISE 135
OVERHEAD EXPRESSWAY LANES	5	BROWN 142
TEMPORARY CONNECTIONS	4	PURPLE 37
RDWY. UNDER CONSTRUCTION	2	LT GREEN 11
RECOMMENDED NOISE ABATEMENT WALL	4	PURPLE 101
TOLL COLLECTION POINT	4	RED 3
DIRECTION OF FLOW	0	MAGENTA 5
PIPELINE	3	ORANGE 6

PROFILE LEGEND

PROPOSED PGL  
EXISTING GROUND (PGL)  
EXISTING GROUND (ROW)  
100 YEAR WATER SURFACE ELEVATION

JACOBS  
F-2966

SCHEMATIC LAYOUT  
MONTGOMERY & GRIMES COUNTIES  
STATE HIGHWAY 249  
FROM: FM 1774/FM149 IN PINEHURST  
TO: FM 1774 IN 1000 MISSION  
SHEET 7 OF 8  
HOUSTON DISTRICT



PRELIMINARY  
SUBJECT TO CHANGE

PROPOSED DETENTION  
POND NO. 4

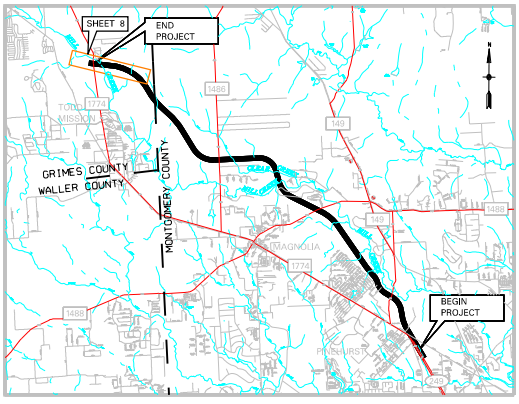
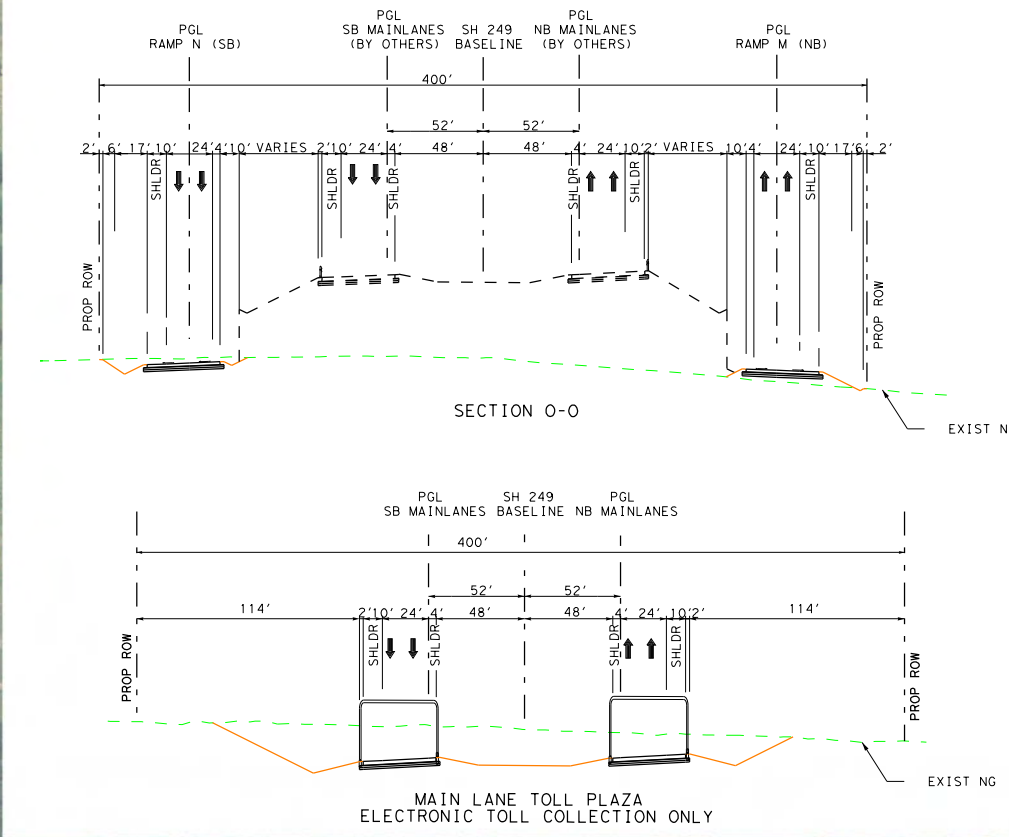
F.M.  
1774  
EXIT 1/2 MILE

F.M.  
1774

EXIT

EXIT

F.M.  
1774



PROJECT LOCATION MAP  
NOT TO SCALE

PUBLIC HEARING  
FEBRUARY 18, 2015

RURAL PRINCIPAL ARTERIAL  
DESIGN SPEED:  
MAIN LANES 70 MPH  
RAMPS 50 MPH

0 200 400 600

NOT A BIDDING DOCUMENT

MOHAMMAD SALEEM P.E.  
82074  
TEXAS REGISTRATION NUMBER  
22/6/2015  
DATE

LEGEND			
PLAN LEGEND			
SYMBOL	LINE WT.	COLOR	CODE
MAIN LANES	SHADE	MAGENTA	5
BRIDGES	SHADE	BLACK	0
INTERSECTING ROADS AND TURNAROUNDS	SHADE	BLUE	1
RAMPS	3	RED	3
EXISTING RDWY TO BE REMOVED	0	BLACK	0
EXISTING RDWY TO REMAIN	0	GREEN	1
EMBANKMENT	2	RED	3
CONTROL OF ACCESS	3	RED	3
PROP ROW	5	BLACK	0
EXISTING ROW/PROPERTY LINES	6	BLACK	0
ACCESS ROAD	1	BLUE	1
PLANIMETRIC	0	GREEN	2
TRAFFIC COUNT YEAR (2035) DHV	0	BLACK	0
EXISTING LANE DIRECTIONAL INDICATOR	1	BLACK	0
PROPOSED LANE DIRECTIONAL INDICATOR	1	BLACK	0
DIRECT CONNECTOR	4	ORANGE	6
DEPRESSED	2	RED	3
FUTURE	1	BLUE	1
RETAINING WALL	4	RED	3
STRIPING	0	ORANGE	6
HIGH OCCUPANCY VEHICLE	5	TURQUOISE	135
OVERHEAD EXPRESSWAY LANES	5	BROWN	142
TEMPORARY CONNECTIONS	4	PURPLE	37
RDWY. UNDER CONSTRUCTION	2	LT GREEN	11
RECOMMENDED NOISE ABATEMENT WALL	4	PURPLE	101
TOLL COLLECTION POINT	1	RED	3
DIRECTION OF FLOW	0	MAGENTA	5
PIPELINE	3	ORANGE	6

PROFILE LEGEND

PROPOSED PGL  
EXISTING GROUND (PGL)  
EXISTING GROUND (ROW)  
100 YEAR WATER SURFACE ELEVATION

JACOBS

F-2966

SCHEMATIC LAYOUT  
MONTGOMERY & GRIMES COUNTIES  
STATE HIGHWAY 249  
FROM: FM 1774/FM 49 IN PINEHURST  
TO: FM 1774 IN TODD MISSION  
SHEET 8 OF 8

DATE:  
APPROVED:  
REVISION APPROVAL DATE:

