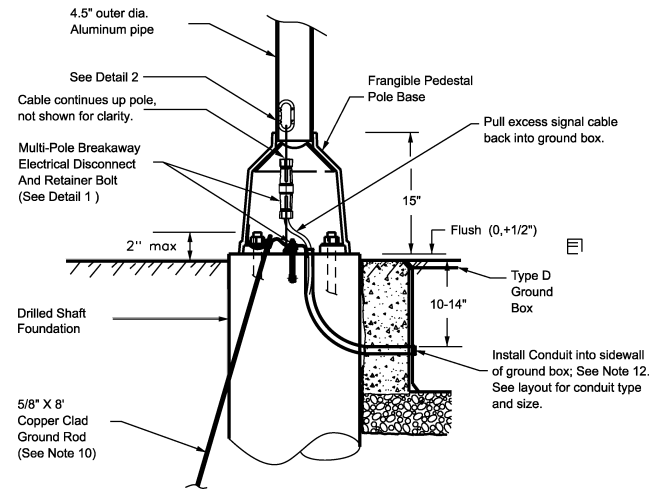


DISC AMER: This standard is governed by the "Texas Engineering Practice Act". No warranty, or any kind is made by TxDOT for any person who, however, TxDOT assumes no responsibility for the conversion of this standard to other formats or for incorrect results or damages resulting from its use.

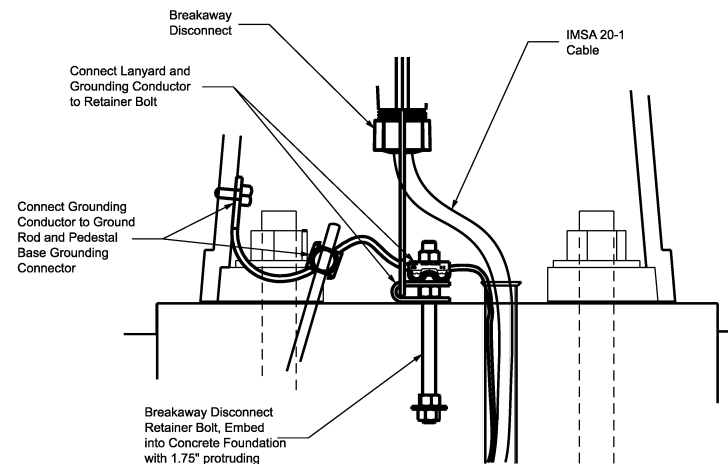
DATE: 12/29/2024
 FILE: Ped Pole Assembly - MBOv5.dgn

NOTES:

- Details show a typical Pedestal Pole Assembly installation. Other arrangements are possible. See signal layout sheets for details.
- See Item 687, "Pedestal Pole Assemblies" for further requirements.
- Install 24A Drilled Shaft foundation at the location shown on layout sheets, see standard sheet TS-FD for shaft details.
- Install signal heads and other equipment as shown elsewhere on the plans, or as directed. Use hardware specifically designed for mounting heads on poles.
- Conduit in foundation and within 6 in. of foundation is subsidiary to Item 687, "Pedestal Pole Assemblies."
- Unless otherwise shown on the plans, pole shaft shall be one piece, Schedule 40 Aluminum pipe, ASTM B429 or B221 (Alloy 6061-T6 only). Aluminum conduit will not develop the necessary strength and will not be allowed.
- Per manufacturer's recommendations, engage all threads on the pedestal pole base and pipe unless the pipe is fully seated into base. In high winds, use a pole and base collar assembly to add strength and prevent loosening of connection.
- Provide multi-pole non-fused watertight breakaway electrical disconnects with lanyards for use with frangible pedestal pole bases as required by Item 687, "Pedestal Pole Assemblies." Ensure the 20 Amp, 300 Volt breakaway disconnect is listed on TxDOT's MPL in the file "Traffic Signals." Ensure the breakaway disconnect is designed for use with five to seven #12 or #14 conductor cables meeting IMSA 20-1 stranded copper specifications. Connect multi-pole disconnect lanyards to pole and foundation as shown. Breakaway action shall not rely on the pulling of the wiring but shall be accomplished with the lanyards.
- Install IMSA five or seven conductor cable. Where more than seven conductors are needed, install multiple five or seven conductor cables. Install breakaway disconnect in each cable. Multiple disconnects may use the same eyebolts and snap-clips for lanyards. Make connections as shown in the table.
- Provide UL listed ground rod clamps for the purpose of connecting ground rods in accordance with NEC.
- Ensure height of conduit and ground rod is below top of anchor bolts.
- Install ground box in close proximity to Pedestal Pole Assembly. Where the conduit between the Pedestal Pole and the ground box is covered with concrete, either rip-rap or ground box apron, the conduit depth may be reduced and the conduit run into the sidewall of the box rather than turning into the bottom of the box. Contractor shall cut the hole in the sidewall with a circular punch or drill. Conduit shall penetrate interior space of ground box a maximum of two inches. After connector assembly and lanyard attachment, pull excess signal cable back into ground box.

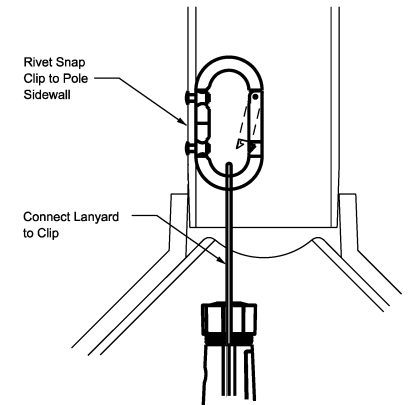


PROFILE



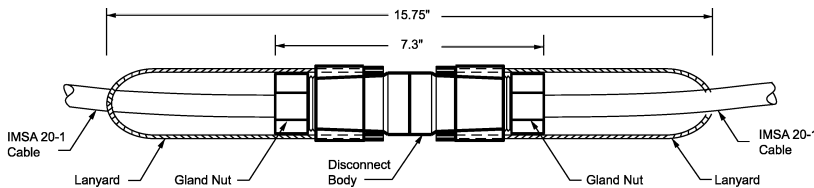
DETAIL 1

MULTI-POLE DISCONNECT WIRING TABLE		
Pin	Color	Notes
1	Black	
2	White	
3	Red	
4	Green	
5	Orange	
6	Blue	If used
7*	White/Black Tracer	If used
*	terminal 7 may be labeled with a ground symbol, however, in this application it is not a grounding conductor. Grounding is addressed externally.	



DETAIL 2

Snap Clip
304 Stainless Steel



MULTI-POLE BREAKAWAY DISCONNECT

Rated for 5 to 7 stranded #12 or #14 copper conductors. Dimensions approximate.

Texas Department of Transportation

PEDESTAL POLE ASSEMBLY
 DALLAS DISTRICT STANDARD

N.T.S.			
FED. RD. DIV. NO.	FEDERAL AID PROJECT NO.		HIGHWAY NO.
6	(SEE TITLE SHEET)		---
STATE	DISTRICT	COUNTY	SHEET NO.
TEXAS	DAL	-----	
CONTROL	SECTION	JOB	--
----	--	---	