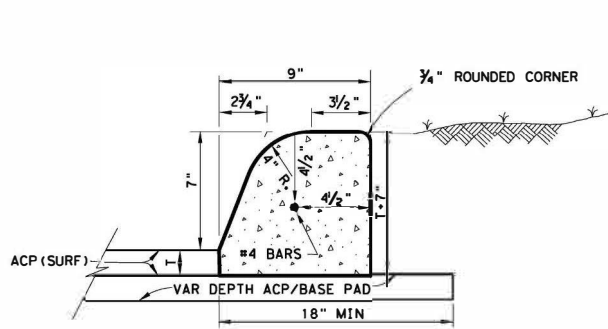


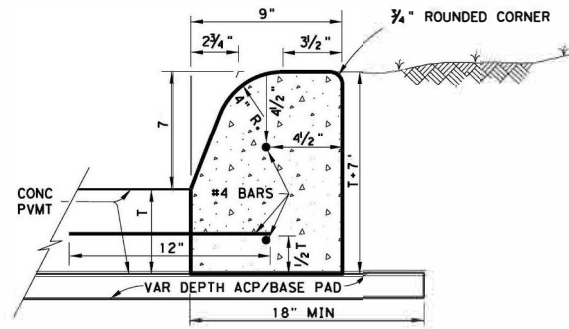
4/11/05 PM

6/9/2025

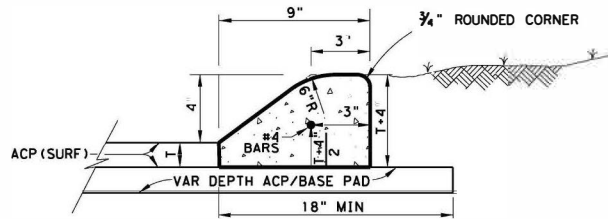
T:\DAL\TRAFSDAStandards [Current] (DAL) ONL\WMSD 251.DAL.dgn



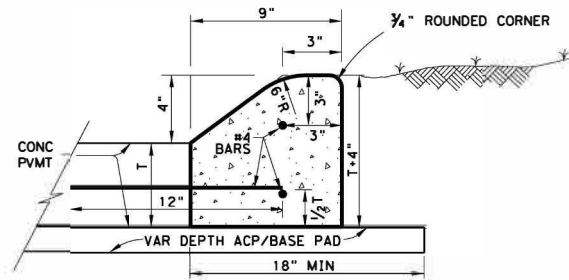
**CONCRETE CURB (TYPE 1)
W/ ACP**



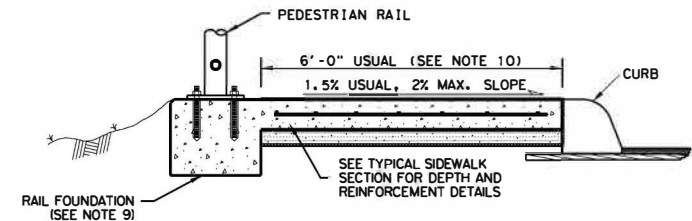
**CONCRETE CURB (TYPE 1)
W/ CONC PAVEMENT**



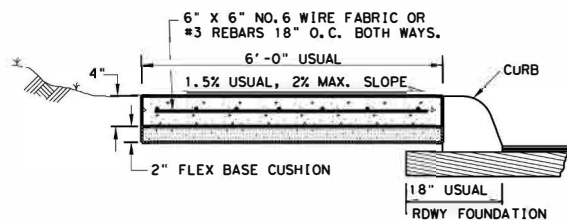
**CONCRETE CURB (TYPE 2)
W/ ACP**



**CONCRETE CURB (TYPE 2)
W/ CONC PAVEMENT**

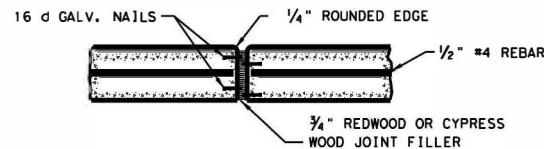


**TYPICAL SIDEWALK SECTION
WITH PEDESTRIAN RAIL**



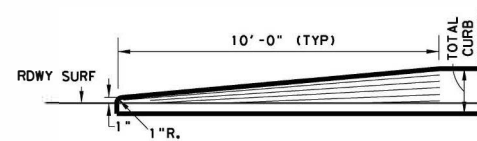
TYPICAL SIDEWALK SECTION

GROOVED JOINTS IN THE SIDE WALK SHALL BE AT A MAX. SPACING OF 10 FT. AND SHALL HAVE 3/4" EXPANSION JOINTS AT A MAX. SPACING OF 60' AND TO COINCIDE WITH THE CURB EXP. JOINTS.



TYPICAL CURB EXPANSION JOINT DETAIL

EXPANSION JOINTS TO BE PLACED AT BEGINNING AND END OF CURVES, DRIVEWAYS WHEELCHAIR RAMPS, INLETS, ILLUMINATION/SIGNAL FOUNDATIONS AND OTHER FIXED OBJECTS.



TRANSITION FOR CONCRETE CURB ENDS

SEE CURB DETAIL FOR REINFORCEMENT

GENERAL NOTES:

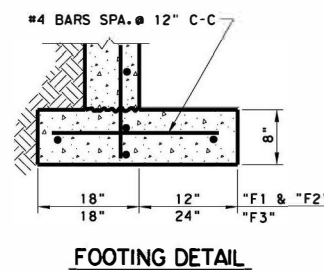
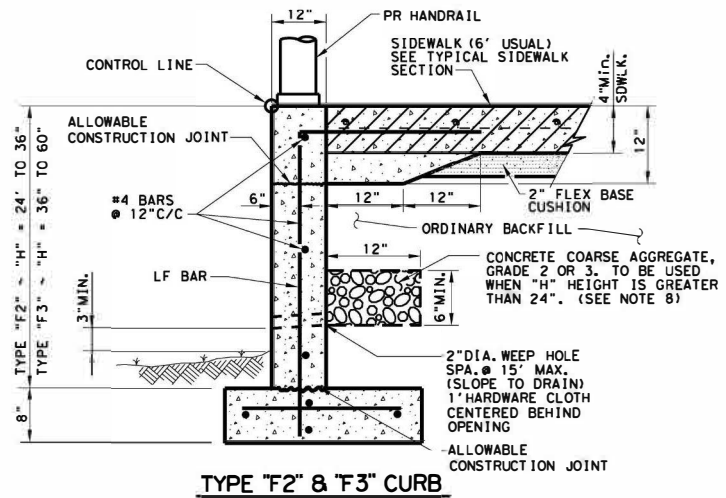
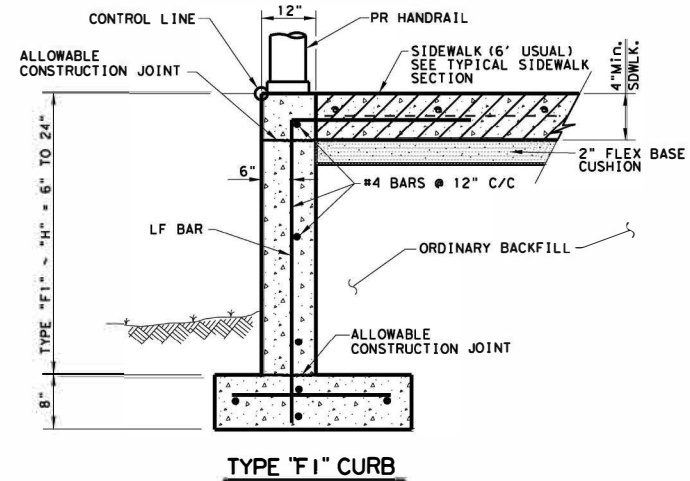
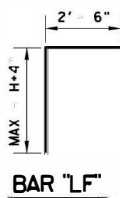
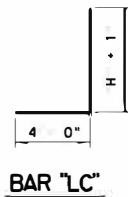
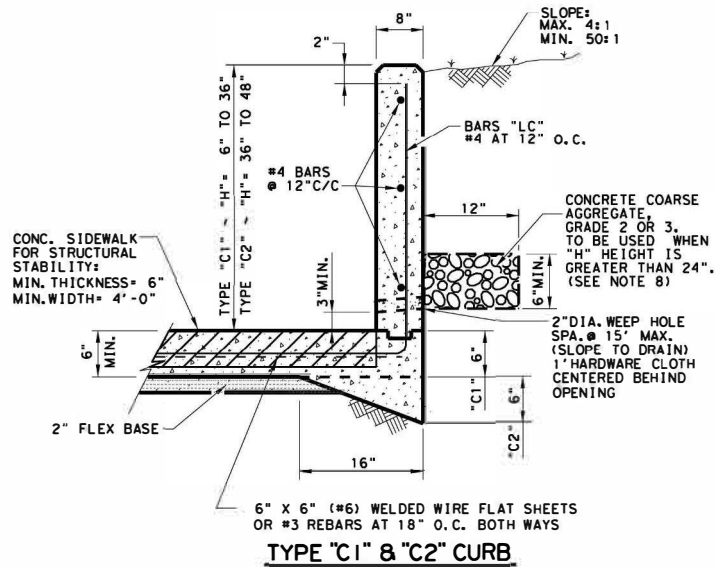
1. CONCRETE CURB TYPE 1 AND 2 SHOWN SHALL MEET THE MINIMUM SPECIFICATION REQUIREMENTS OF CLASS "A" CONCRETE PER ITEM 529 AND 421.
2. ALL REINFORCING STEEL SHALL BE GRADE 60
3. WHERE CONCRETE CURB IS PLACED ON EXISTING CONCRETE PAVEMENT, THE PAVEMENT SHALL BE DRILLED AND THE REINFORCING BARS GROUTED IN PLACE.
4. EXPANSION AND CONTRACTION JOINTS SHALL BE CONSTRUCTED TO MATCH PAVEMENT JOINTS IN ALL CURBS AND CURB AND GUTTER ADJACENT TO JOINTED CONCRETE PAVEMENT. WHERE PLACEMENT OF CURB OR CURB AND GUTTER IS NOT ADJACENT TO CONCRETE PAVEMENT, EXPANSION JOINTS SHALL BE PROVIDED AT STRUCTURES, CURB RETURNS AT STREETS, AND AT LOCATIONS DIRECTED BY THE ENGINEER.
5. VERTICAL AND HORIZONTAL DOWEL BARS AND TRANSVERSE REINFORCING BARS SHALL BE PLACED AT 4 FEET C-C, UNLESS OTHERWISE SHOWN.
6. ONE-HALF INCH EXPANSION JOINT MATERIAL SHALL BE PROVIDED WHERE CURB OR CURB AND GUTTER IS ADJACENT TO SIDEWALK OR RIPRAP. THIS IS SUBSIDIARY TO THE CURB ITEM 529.
7. LAYDOWN CURB AT DRIVEWAYS WILL BE PAID AS SUBSIDIARY TO ITEM 530.
8. FOR SIDEWALK DETAILS AT DRIVEWAYS, SEE SAN ANTONIO DISTRICT STANDARD "DRIVEWAY DETAILS".
9. SEE PEDESTRIAN HANDRAIL DETAILS STANDARD "PRD" FOR MORE INFORMATION. CONCRETE RAIL FOUNDATION TO BE POURED WITH THE SIDEWALK BUT PAYMENT IS SUBSIDIARY TO ITEM 450 "RAILING".
10. CLEAR SIDEWALK WIDTH EXCLUDING THE PEDESTRIAN RAIL FOUNDATION SHALL BE 6' UNLESS OTHERWISE SPECIFIED IN THE PLANS



**MISCELLANEOUS CURB
AND SIDEWALK DETAILS**

DALLAS DISTRICT STANDARD

N. T. S.		SHEET 1 OF 2	
FED RD DIV. NO.	FEDERAL AID PROJECT NO.	HIGHWAY NO.	
6	(SEE TITLE SHEET)	---	
STATE	DISTRICT	COUNTY	SHEET NO.
TEXAS	DAL	-----	---
CONTROL	SECTION	JOB	---
---	---	---	---



GENERAL NOTES:

- CONCRETE FOR CURB TYPE F AND C SHOWN SHALL MEET THE MINIMUM SPECIFICATION REQUIREMENTS OF CLASS "C" CONCRETE PER ITEM 421
- ALL REINFORCING STEEL SHALL BE GRADE 60
- EXPANSION AND CONTRACTION JOINTS SHALL BE CONSTRUCTED TO MATCH PAVEMENT JOINTS IN ALL CURBS AND CURB AND GUTTER ADJACENT TO JOINTED CONCRETE PAVEMENT. WHERE PLACEMENT OF CURB OR CURB AND GUTTER IS NOT ADJACENT TO CONCRETE PAVEMENT, EXPANSION JOINTS SHALL BE PROVIDED AT STRUCTURES, CURB RETURNS AT STREETS, AND AT LOCATIONS DIRECTED BY THE ENGINEER.
- VERTICAL AND HORIZONTAL DOWEL BARS AND TRANSVERSE REINFORCING BARS SHALL BE PLACED AT 4 FEET C-C UNLESS OTHERWISE SHOWN.
- UNTIL THE SIDEWALK IS COMPLETE, LATERAL SUPPORT FOR THE "F" CURBS WILL BE REQUIRED.
- IF AGGREGATE IS REQUIRED PER THE DETAIL, IT IS PAID AS SUBSIDIARY TO THE CURB, ITEM 529.

DESIGN SOIL PARAMETERS:
 Soil Unit Wt. = 120 pcf
 Phi = 30 Degrees
 Cohesion = 50 psf
 Min. PI = 15
 Max. PI = 30

SURCHARGE:
 TYPE F CURB a = 2' Adjacent to sidewalk
 Max. slope behind TYPE C Curb = 4:1
 Min. Factor of Safety against sliding is 1.5.
 Designed in accordance with current AASHTO Standards and Interim Specifications.



MISCELLANEOUS CURB AND SIDEWALK DETAILS

DALLAS DISTRICT STANDARD

N. T. S.		SHEET 1 OF 2	
FED RD DIV. NO.	FEDERAL AID PROJECT NO.	HIGHWAY NO.	
6	(SEE TITLE SHEET)	---	
STATE	DISTRICT	COUNTY	SHEET NO.
TEXAS	DAL	---	---
CONTROL	SECTION	JOB	
---	---	---	---

CLASS C CONCRETE PAID UNDER ITEM 531, SIDEWALK. (NOTE. ADDITIONAL CONCRETE TO MEET THE THICKENED SECTIONS REQUIRED BY THESE DETAILS IS SUBSIDIARY TO ITEM 531, CURB.)