

Texas Population: Trends and Characteristics

Texas Department of Transportation – TxDOT Commission Meeting
April 30, 2026





Newly Released Data

Texas Total Population 2025

31.7M

391K ↗

Numeric increase

1.2% ↗

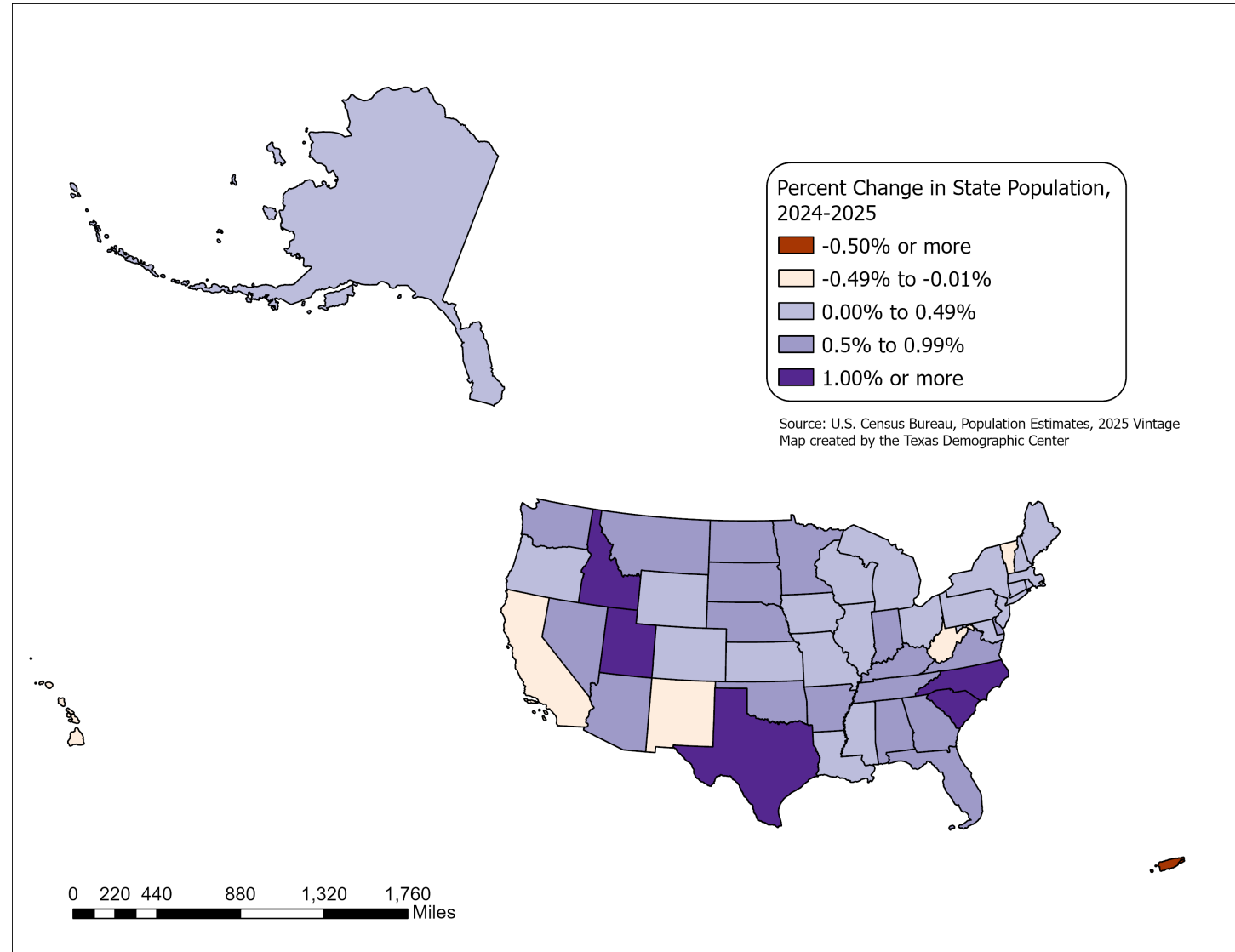
Percent increase

Growth from 2024

New Census Bureau data shows Texas' population reached 31.7 million in July 2025 — a 1.2% increase from 2024 to 2025, more than 2X the 0.5% national growth rate. Though growth slowed compared to recent years, TX still led the nation in numeric gains, adding over 391K residents.

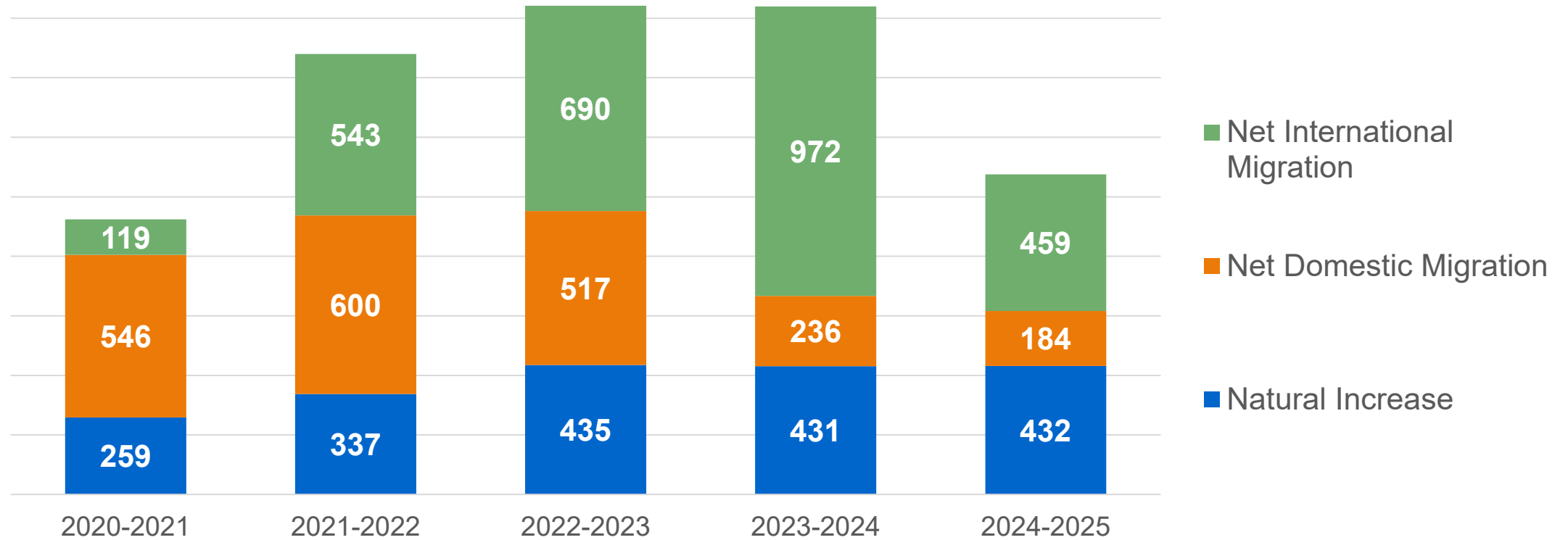
State Highlights

- All but five U.S. states grew between July 2024 and July 2025
 - CA, HI, NM, VT, and WV.
- Top 5 States with percent change
 - SC, ID, NC, **TX**, UT.
- Top 5 States with numeric change
 - TX**, FL, NC, GA, SC.



Texas Daily Population Growth and Components of Change 2020-2025

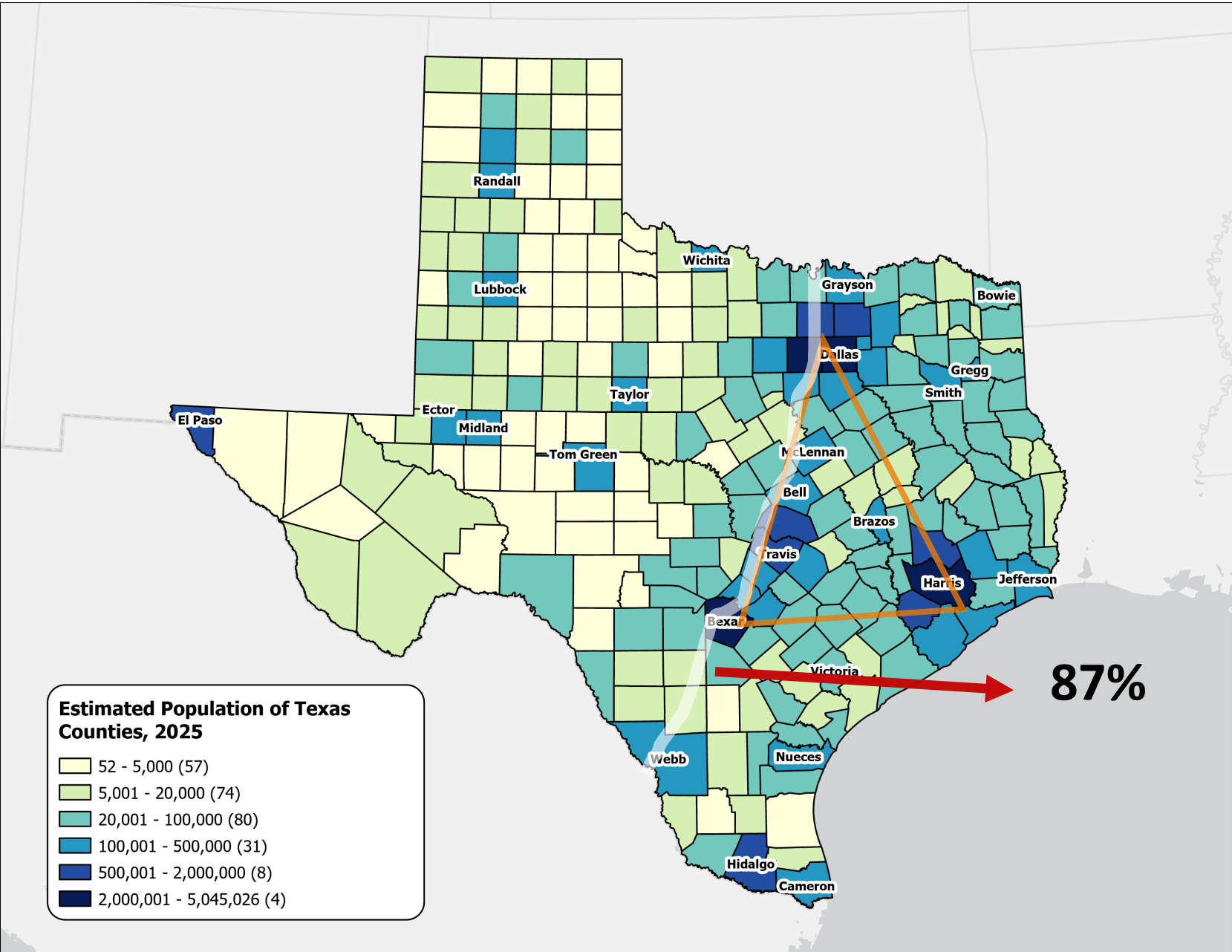
917	1,494	1,647	1,642	1,072	Daily Average Population Change
-----	-------	-------	-------	-------	---------------------------------



Estimated Population, Texas Counties, 2025

Texas population is highly concentrated within the **metropolitan triangle** formed by Dallas–Fort Worth, Austin, San Antonio, and Houston.

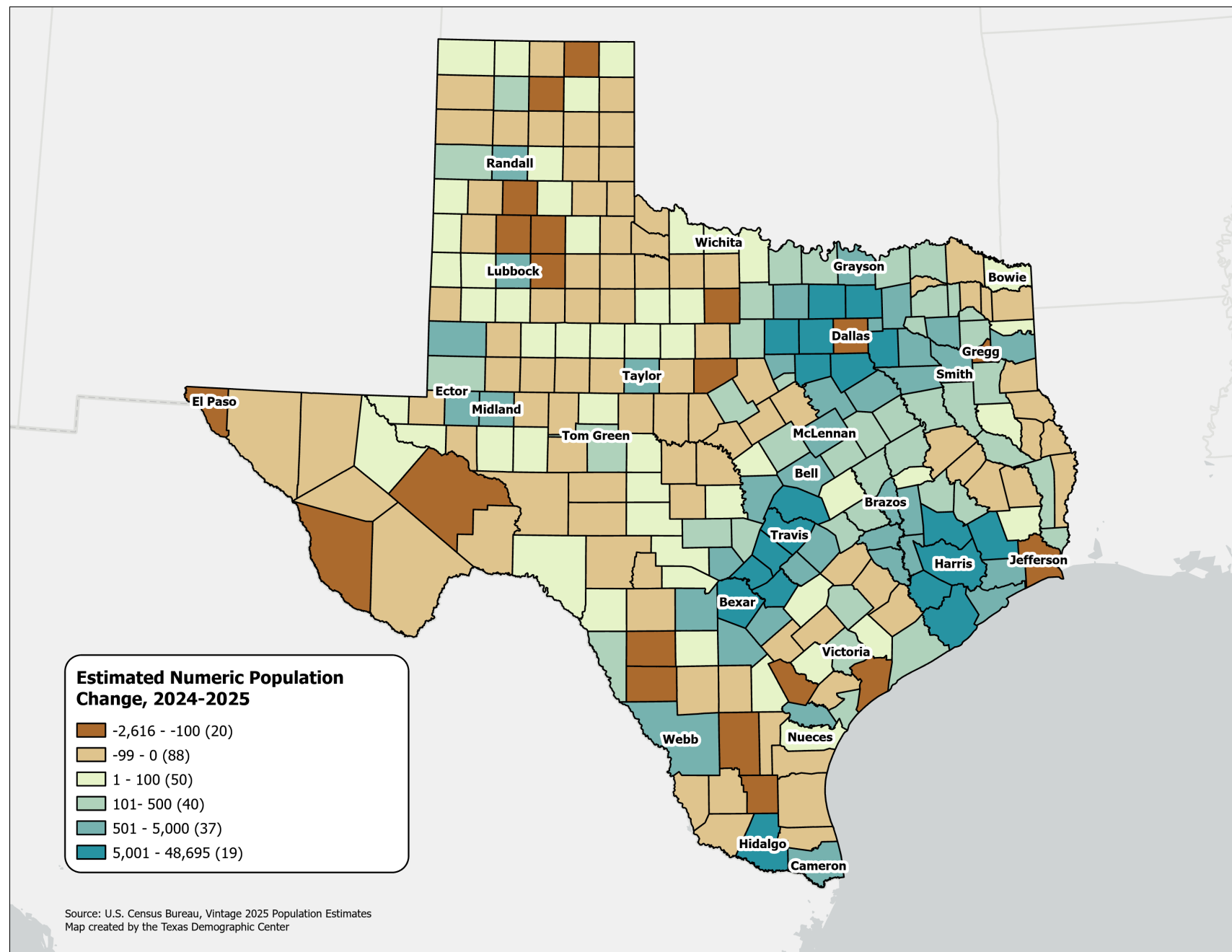
The 120 counties on and east of the **I-35** corridor are home to 27.3 million residents—approximately **87.3%** of the state’s total population.



Estimated Numeric Population Change, Texas Counties, 2024-2025

Population declined in **108** Texas counties, primarily in rural areas.

Dallas experienced the largest numeric population loss, along with several border counties.

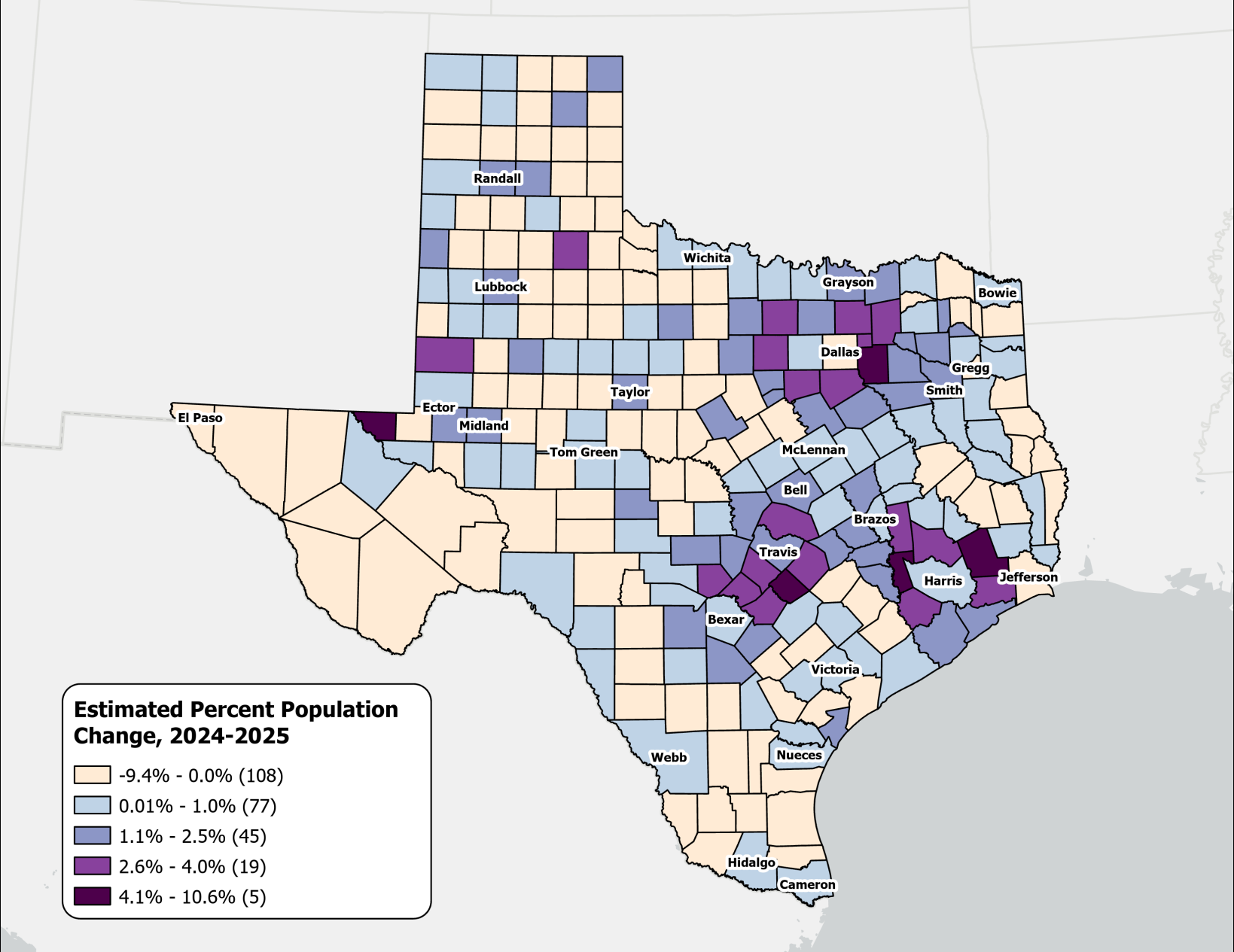


Top Counties for Numeric Growth in Texas, 2024-2025

County	US Rank	2025 Population Estimate	Population Change 2024-2025	Change from Natural Increase	Change from International Migration	Change from Domestic Migration
Harris	1	5,045,026	48,695	72%	118%	-89%
Collin	2	1,297,179	42,966	17%	27%	56%
Montgomery	4	781,194	30,011	14%	12%	76%
Fort Bend	8	975,191	24,163	20%	37%	43%
Williamson	9	752,827	23,814	19%	19%	62%
Denton	12	1,069,346	23,120	28%	22%	50%
Bexar	14	2,160,088	21,146	47%	40%	12%
Tarrant	15	2,248,466	18,428	68%	69%	-38%
Travis	19	1,389,670	14,749	63%	81%	-45%
Kaufman	26	209,235	11,225	15%	1%	85%
Hays	32	304,390	10,051	18%	8%	75%
Ellis	40	240,867	8,413	16%	0%	85%
Hidalgo	45	921,549	7,937	111%	3%	-16%
Comal	50	209,166	7,680	4%	1%	97%

Estimated Percent Population Change, Texas Counties, 2024-2025

Rapid growth was concentrated in counties at the suburban and exurban edges of the Texas metropolitan triangle.



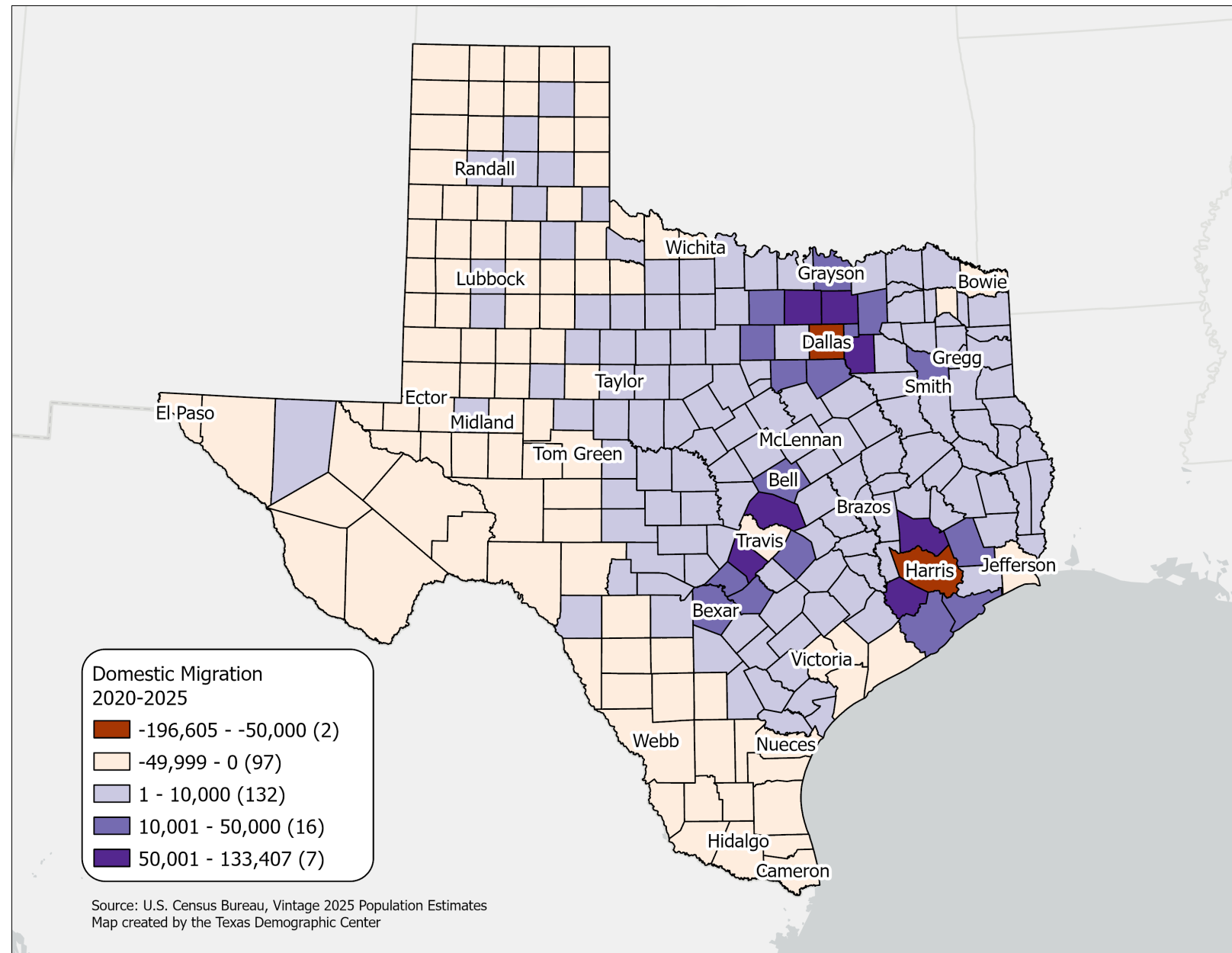
Top Counties for Percent Growth in Texas, 2024-2025

County	US Rank	2025 Population Estimate	Population Change 2024-2025	Percent Population Change 2024-2025	Percent of Population Change from Natural Increase	Percent of Population Change from International Migration	Percent of Population Change from Domestic Migration
Waller	1	69,858	3,761	6%	13%	8%	80%
Kaufman	2	209,235	11,225	6%	15%	1%	85%
Liberty	6	121,364	5,073	4%	15%	3%	84%
Caldwell	7	55,150	2,211	4%	13%	3%	85%
Montgomery	8	781,194	30,011	4%	14%	12%	76%
Comal	10	209,166	7,680	4%	4%	1%	97%
Ellis	11	240,867	8,413	4%	16%	0%	85%
Hunt	13	123,336	4,126	3%	12%	7%	81%
Collin	15	1,297,179	42,966	3%	17%	27%	56%
Hays	16	304,390	10,051	3%	18%	8%	75%
Williamson	19	752,827	23,814	3%	19%	19%	62%
Wise	26	83,778	2,486	3%	6%	0%	96%
Johnson	28	218,048	6,458	3%	11%	3%	86%
Chambers	34	57,594	1,606	3%	22%	2%	77%

*Among counties with populations of 50,000 or more in 2025

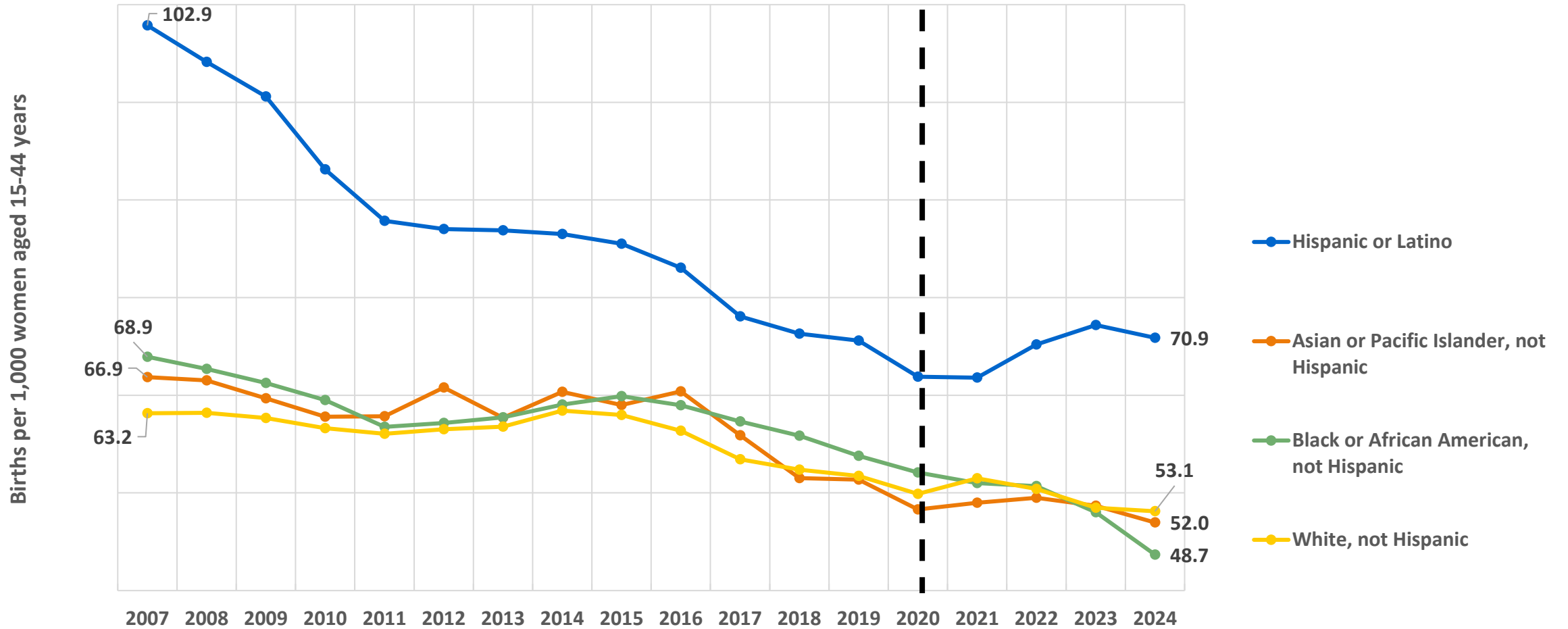
Estimated Net Domestic Migration between 2020 and 2025, Texas Counties

- **Ninety-nine counties**, primarily in West Texas, South Texas, and the Panhandle, experienced net domestic migration **losses** or minimal gains.
- **The Texas Triangle** continues to be the primary destination for domestic migrants in the state.
- **Central-city counties** within the Texas Triangle saw the largest numeric migration losses, largely reflecting population movement to **surrounding suburban counties**.



Texas Fertility Rates, 2007-2024

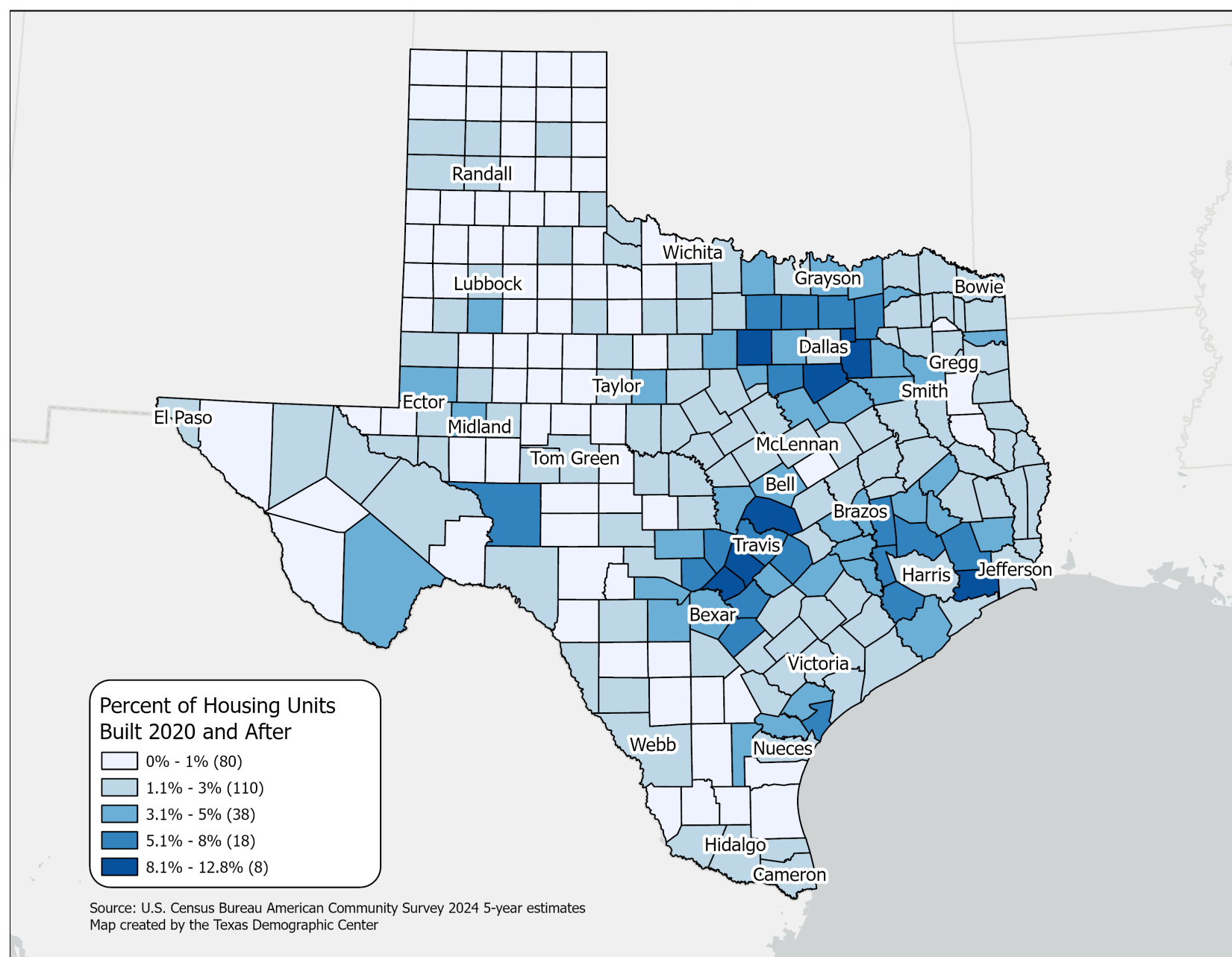
Births per 1,000 women aged 15-44



Percent of the housing units built in 2020 and after

Texas Counties

- New housing is concentrated in suburban counties within the **Texas Triangle**.
- Highest shares of post-2020 housing are **around major metros** (DFW, Houston, Austin, San Antonio).
- **Rural counties** show limited recent construction, often below 1%.



Projected Population Growth in Texas with Various Migration Scenarios

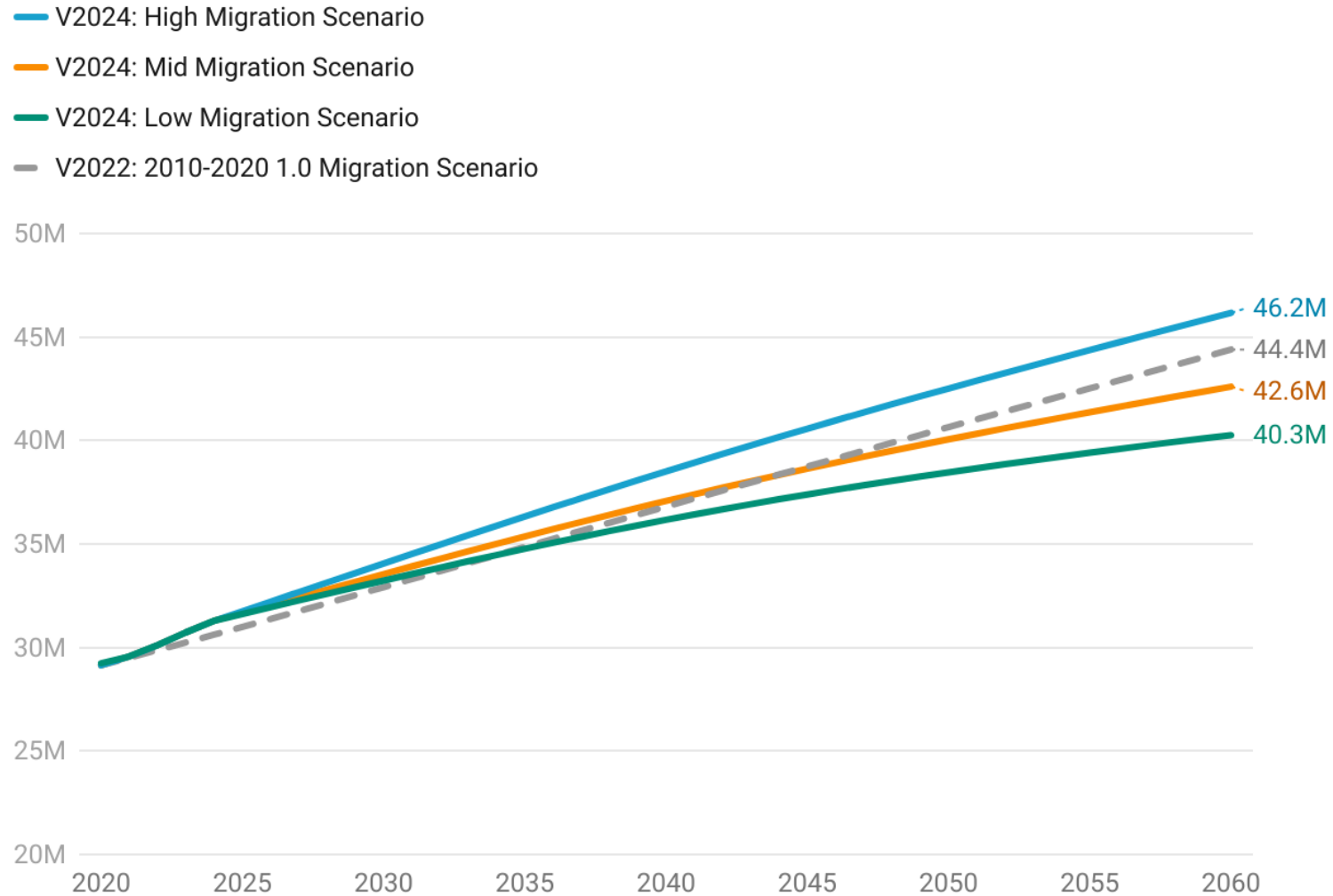
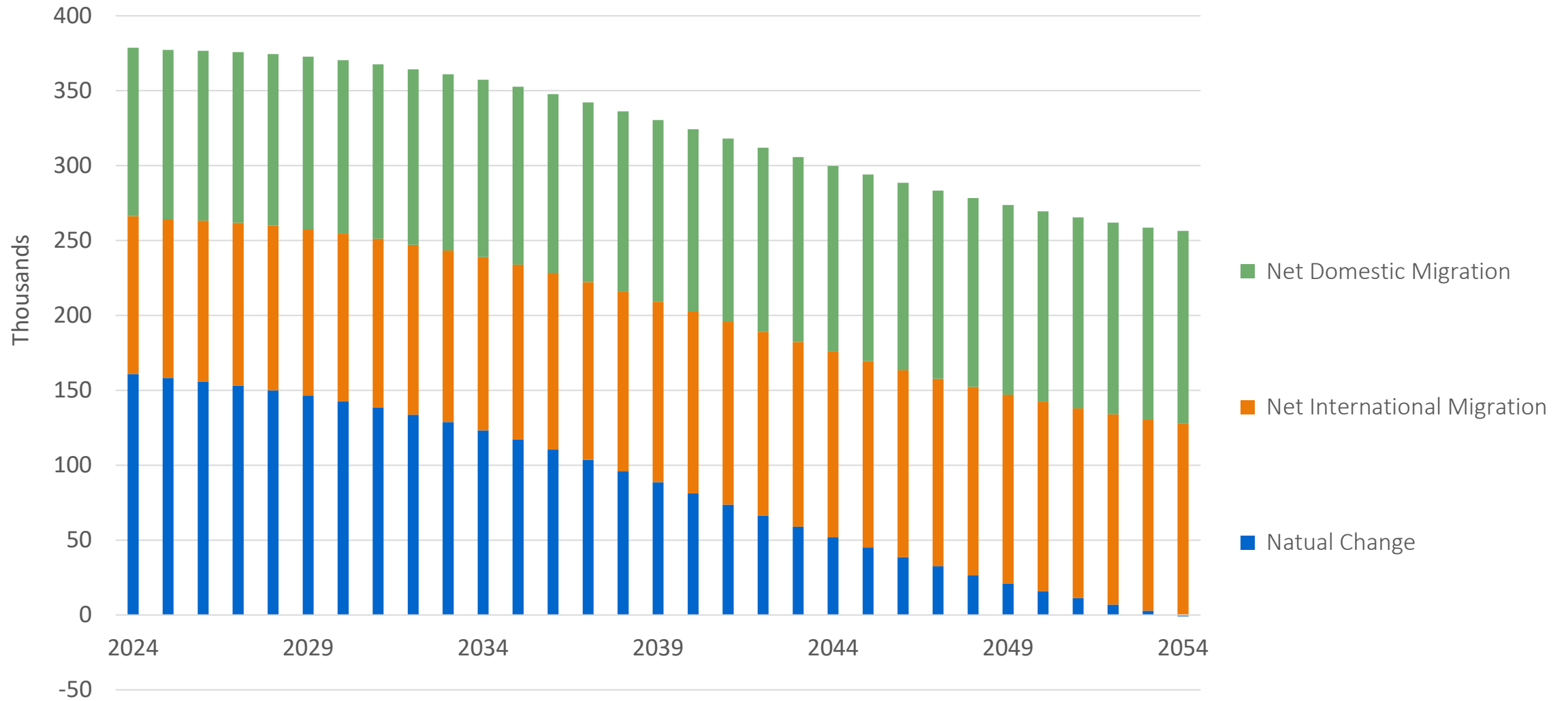


Chart: Texas Demographic Center • Source: Texas Demographic Center, Vintage 2022 and 2024 Population Projections •

Projected Components of Change under the Mid Migration Scenario

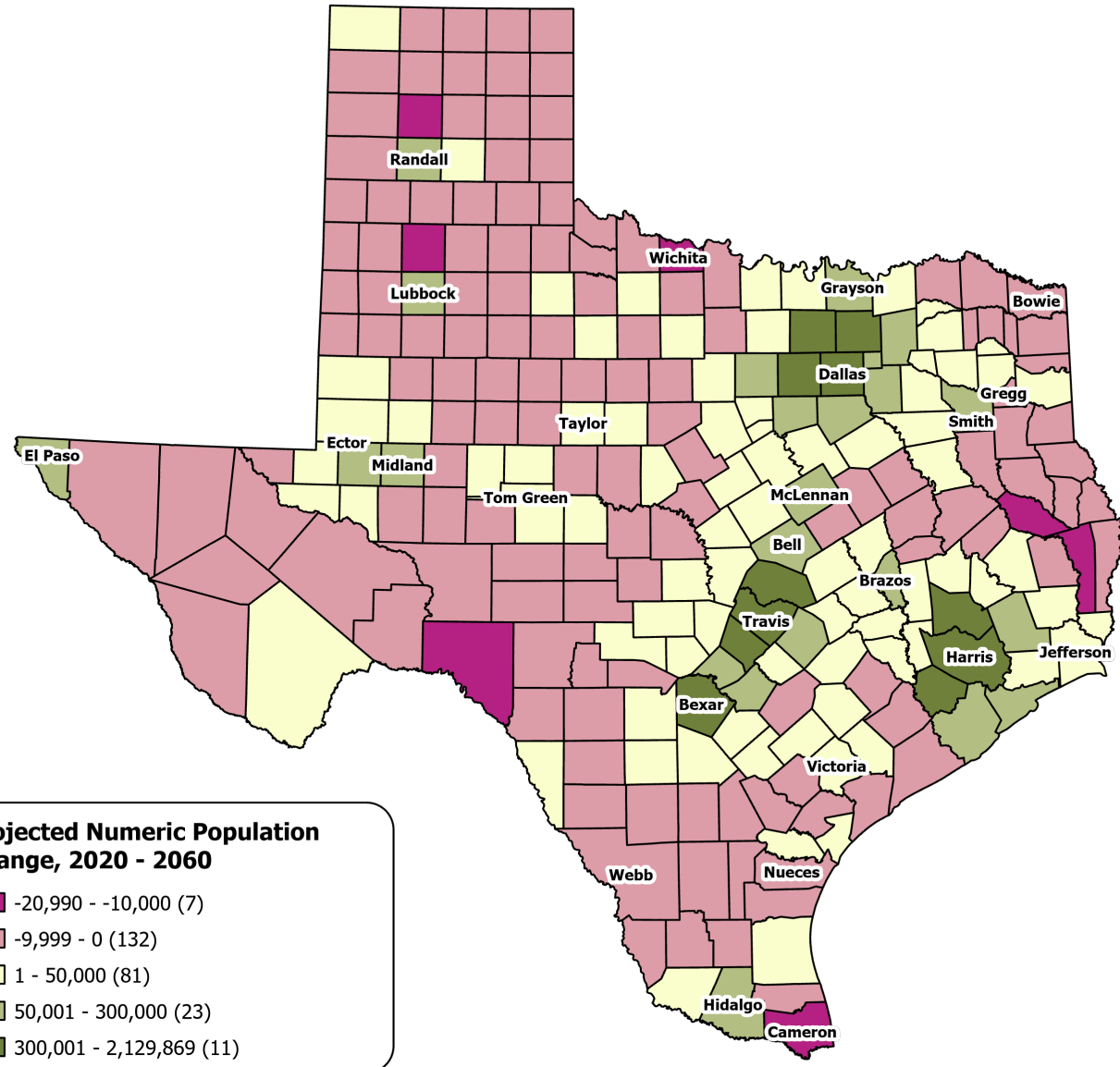


Texas Counties

Projected Population Numeric Change 2020-2060

Mid Migration Scenario

- 139 Counties are projected to lose population
- Current MSA counties will account for 99% of the state's growth from 2020 to 2060
- The four MSAs within the TX Triangle will increase their share of population from 67% to 74%



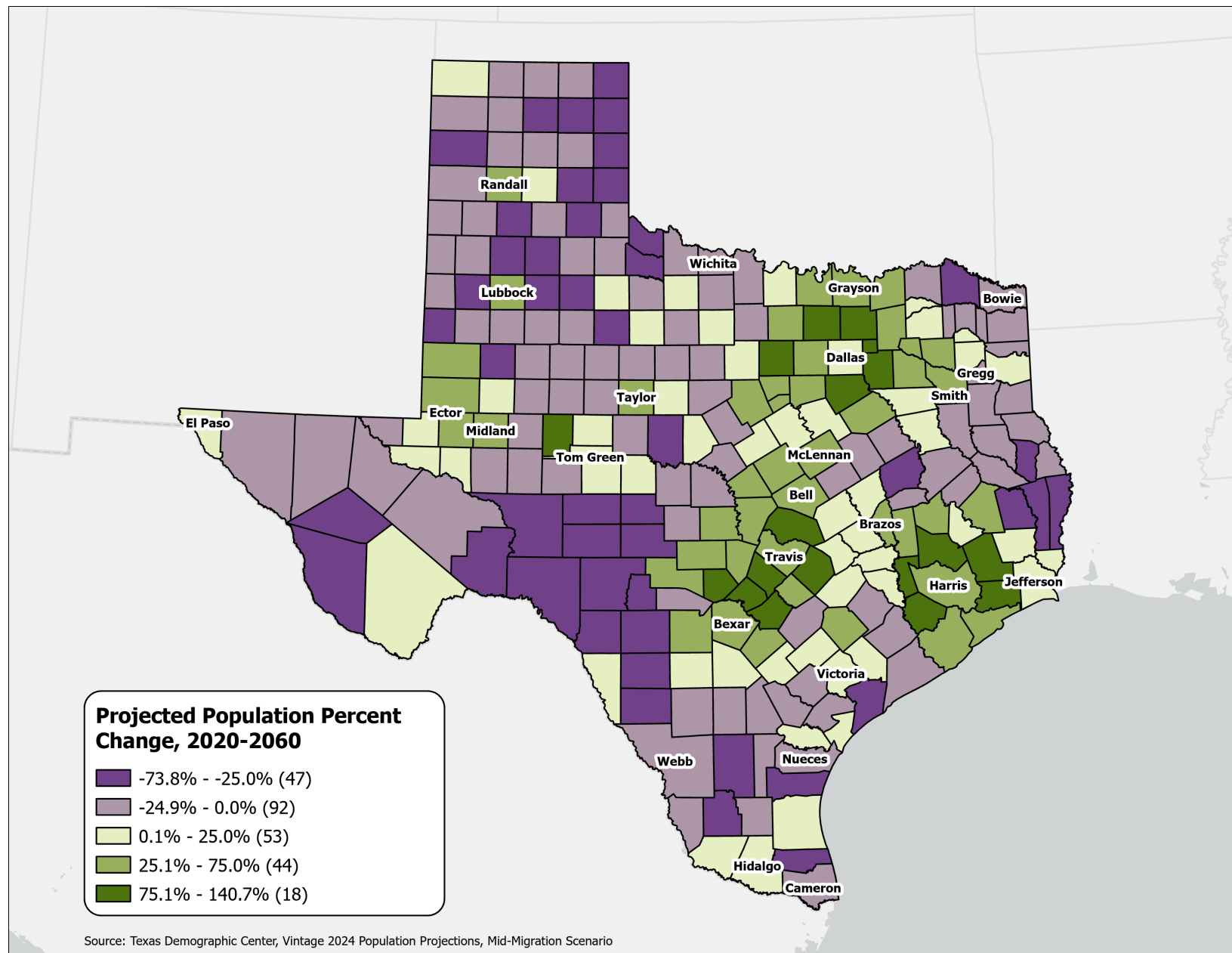
Texas Demographic Center, Vintage 2024 Population Projections, Mid Migration Scenario

Texas Counties


Projected Population Percent Change 2020-2060

Mid Migration Scenario

- Suburban ring counties in the triangle area will see the fastest growth rates.



Helen You, Ph.D.

 (210) 458-6530

 tdc@utsa.edu

 demographics.texas.gov/

