



May 27, 2025

# Pre-Request for Proposal (RFP) Meeting

## CEI Services for Loop 286 Paris District

FY 25 Wave 4

Solicitation No. 601CT0000006251; RFP No. 01-5SDP5002

# Housekeeping

## Thanks for joining our virtual meeting!

- Be sure your full name is showing up correctly to provide your information on the attendee list.
- Please ensure your audio is muted and video turned off.
- Note that all correspondence will be muted throughout this presentation.
- The meeting will not be recorded, and attendees **may not** use any form of audio or video recording, photography, automated transcription services, or AI-based analysis tools.
- There **will not** be an opportunity to ask questions during the Pre- RFP presentation.
- You **will** be given an opportunity to ask questions after the presentation via an **email request**.

# Meeting Agenda

- 1 Safety Moment
- 2 Introductions & Ground Rules
- 3 Procurement Overview & Process
- 4 Preclusions & Core Team Restrictions
- 5 Project Overview
- 6 Procurement Timeline (Tentative)
- 7 Wrap Up & Next Steps

# HELP #EndTheStreakTX

End the streak of daily deaths on Texas roadways.

**TxDOT.gov** (Keyword: #EndTheStreakTX)



#EndTheStreakTX Toolkit



# Introductions

- PEPS Central Service Center Manager (PEPS-LRD)
  - Jaime A. Vela, Jr., P.E.
- PEPS Central Procurement Engineer (PEPS-BRY)
  - Allison Kurwitz, P.E.
- PEPS Central Contract Specialists (PEPS)
  - Cindy Barajas
- Consultant Selection Team (CST) Members:
  - Zachary Smith, P.E.: Assistant Area Engineer – Paris Area Office – Paris District (PAR)
  - Austin Shatto, P.E.: Transportation Engineer – Paris Area Office – Paris District (PAR)
  - Troy Scholl: Construction Inspector – Paris Area Office – Paris District (PAR)

**PLEASE - Do NOT Contact the CST Members**

## Ground Rules

1. Do not contact the CST members during the procurement process
2. Communication is one-way during this presentation.
3. Brief Presentation – Information Purposes Only
4. All questions must be emailed to [Allison.Kurwitz@txdot.gov](mailto:Allison.Kurwitz@txdot.gov) by 5:00 p.m. on Tuesday, June 3, 2025.

Subject line: 6251 Pre-RFP Meeting Question

## Procurement Overview: Paris District Loop 286 CEI

- One procurement - One Specific Deliverable Contract
  - Federal with Interviews, DBE
  - Construction Engineering & Inspection (CEI)
  - Without Work Authorizations (WA)
- Amount – To be determined through negotiations
- Duration: Approx. 5 years

# Procurement Process

**One Specific Deliverable Contract without Work Authorizations**  
**Contract Duration: Approx. 5 Years**

## FEDERAL FUNDS

### DBE GOAL

- TBD%
- Refer to RFP for final %

## FEDERAL PROCESS WITH INTERVIEWS

- Solicitation – The Request for Proposal (RFP)
- Response – Proposal submitted in Bonfire
- Short List – Based on proposal scores
- Interviews – Provider presentation
- Selection – Based on the interview scores



## Procurement Process

- **Post Request for Proposal (RFP)**
  - Electronic State Business Daily (ESBD): Minimum 21-day posting time for RFP.
  - Solicitation will be posted in Bonfire.
  
- **Submit Responses**
  - Providers will use Bonfire to submit responses to the solicitation.
    - Bonfire [Frequently Asked Questions \(FAQs\) \(state.tx.us\)](https://state.tx.us/bonfire/faq)
    - Follow the RFP instructions and submit all completed, applicable documents required.
    - Use the latest version of all forms.

# Procurement Process

- **RFP Screening**

- RFP Screening Checklist [Architectural, Engineering and Surveying Consultants \(state.tx.us\)](https://www.state.tx.us)
- All prime and subs providing engineering and design-related services must be Administratively Qualified (AQ); or be determined eligible by TxDOT's PEPS Division, Business Operations Center - Administrative Qualification Group to use the federal safe harbor rate, by the RFP deadline specified in this solicitation.
- Primes can look up subs on the TxDOT.gov website to check on AQ status. [Firms Eligible to Do Business with TxDOT](#)

- **Proposal Evaluation**

- Short list based on proposal scores

# Procurement Process

- **Interview**
  - Shortlisted firms will receive the Interview Contract Guide (ICG) that outlines the process, presentation topics, and scoring criteria.
  - Interviews will consist of Provider presentations, and follow-up questions and answer session.
  - Selection based on interview scores.
- **Negotiations**
  - Labor Classifications, Hourly Labor Rates, Unit Cost, ODE
  - Level of Effort
  - Negotiate Scope, budget, and work schedule
- **Execute Contract**

## Procurement Process – RFP Requirements

Project Team Composition (PTC) Form (Parts 1, 2, and 3) must include:

- TLs for standard work categories
- DBE firms
- Percentages of work

### Examples of Standard Work Categories

**11.1.1 Roadway Construction Manage. And Inspect.**

**11.2.1 Bridge Const. Management and Inspect.**

**11.3.1 Construction Superintendent**

**11.10.1 Construction Record Keeper**

**12.1.5 Portland Cement Concrete Placement**

**18.5.1 Utility Const. Manage. and Verification**

- Prime provider shall perform at least **30%** of the contracted work using its own work force.
- DBE goal is **TBD%**.

## RFP Work Categories (Tentative\*)

1.8.1	Public Involvement
11.1.1	Roadway Construction Management and Inspection
11.2.1	Bridge Construction Management and Inspection
11.3.1	Construction Superintendent
11.4.1	Environmental Inspections
11.5.1	Construction Scheduling Project Manager
11.6.1	Construction Schedule Support - General
	Construction Schedule Support – Relating to Construction Management of
11.8.1	Projects Including Bridges or Multilevel Interchanges
11.10.1	Construction Record Keeper
12.1.1	Asphaltic Concrete Production
12.1.2	Portland Cement Concrete
12.1.3	Materials Engineering
12.1.4	Asphaltic Concrete Placement
12.1.5	Portland Cement Concrete Placement
12.1.6	Embankment/Subgrade/Backfill/Base Production
12.1.7	Embankment/Subgrade/Backfill/Base Placement

\* Subject to change. Refer to RFP for list and percentages.

## RFP Work Categories (Tentative\*)

12.2.1	Concrete Plant Inspection And Testing
12.2.5	Hot Mix Asphalt (HMA) Plant Inspection and Testing
14.1.1	Soil Exploration
14.2.1	Geotechnical Testing
15.2.1	Design Survey
15.2.2	Construction Survey
18.2.1	Subsurface Utility Engineering (Util Engr. Investigation)
18.5.1	Utility Construction Management and Verification

\* Subject to change. Refer to RFP for list and percentages.

# Proposal Evaluation Criteria

CST members will independently score Proposals based on the evaluation criteria and relative importance factors (weightings) provided below. The proposal scores will be used to determine selection.

Evaluation Criteria	Included Elements	Weighting for Evaluation of Proposal
Technical approach	Project understanding, project approach, innovative concepts or alternatives	XX
Project Manager's relevant experience	Experience with similar or related projects, including both technical and management experience	XX
Project planning and management	Project staffing and resource management (who, how, and why), communication plan, and quality control procedures. The prime firm's past experience with utilizing subproviders and meeting program goals (HUB or DBE) and/or how it plans to utilize subproviders to meet the goals on this contract. Also, may include project scheduling or phasing for SD projects	XX
Key staff's relevant experience	Experience with similar projects	XX
Past Performance Score		5 to 15%
Total		100%

## Procurement Process: Proposal

RFP	RFP Responses We're Looking For:
<p>Provide all completed documents in the Cover Page List of Attachments</p> <p>RFP statement is developed to guide your response to focus on the needs for this contract.</p> <p>Refer to the RFP for additional information.</p> <p>Past Performance Score will be captured at the RFP phase, not in interview.</p>	<p><b>We are interested in meeting the contract goals and consultant characteristics –</b> Tailor RFP responses to answer information requested</p> <p>.....</p> <p><b>Tell us about your experience–</b> Provide detailed examples and include challenges/lessons learned and innovation</p> <p>.....</p> <p><b>Quality over quantity –</b> One or two great examples are better than several good/average ones</p> <p>.....</p> <p><b>Thoughtful relevant responses–</b> No key-word search; this is about your capabilities, experience, knowledge, and thought process</p> <p>.....</p>



# Procurement Process: Interview

## Interview and Contract Guide (ICG)

TxDOT will provide the following:

- Scope of work with technical requirements and qualifications required to provide the services of this contract
- Presentation Topics
- Identify interview evaluation criteria
- Interview format and timetable
- Interview schedule date, time and location

## Typical Interview process \*

- TxDOT Introductions/Instructions
- Provider presentation based on topics shown in ICG
- CST Break
- Questions and Answer Session
- TxDOT Concluding Remarks

\*Interviews in-person: Paris District

- The CST members individually score the interviews and then the scores are consolidated to determine the selected provider.

## Preclusions & Core Team Restrictions

### Precluded Firms\*:

Contract 36-7IDP5083 (7941) WA 2

Prime: Burns & McDonnell Engineering Company, Inc.

Subproviders: (Under review and pending notification.)

\* List is subject to change – current as of 5/27/2025

## Preclusions & Core Team Restrictions

**Core Team Restrictions:** This solicitation does not contain a core team restriction.

# Preclusion Appeals Process

## ➤ Preclusion Appeals Process

- Preclusion document has been developed.
  - Email Martin L. Rodin, P.E.
  - Include this Solicitation No. 601CT0000006251
  - Explain rationale for removal from preclusion list
- After posting procurement
  - Formal appeal outlined in [Title 43 TAC § 9.7](#), see for exact details
  - Mail letter to Marc D. Williams, include above info
  - CC: Martin L. Rodin
  - Procurement process is not paused

## Paris District – Loop 286/US 82 Project Overview

- County: Lamar County
- Overall Limits: From Stillhouse Road to North of US 82 E (2.766 miles)
- Proposed Letting Date: September 2027
- Description of Work: Convert to freeway and construct interchanges at FM 195 and Collegiate Drive; replace bridges and approaches at Stillhouse Creek
- CSJs: 1690-01-131, 1690-01-133

## Paris District – Loop 286/ US 82 Project Overview

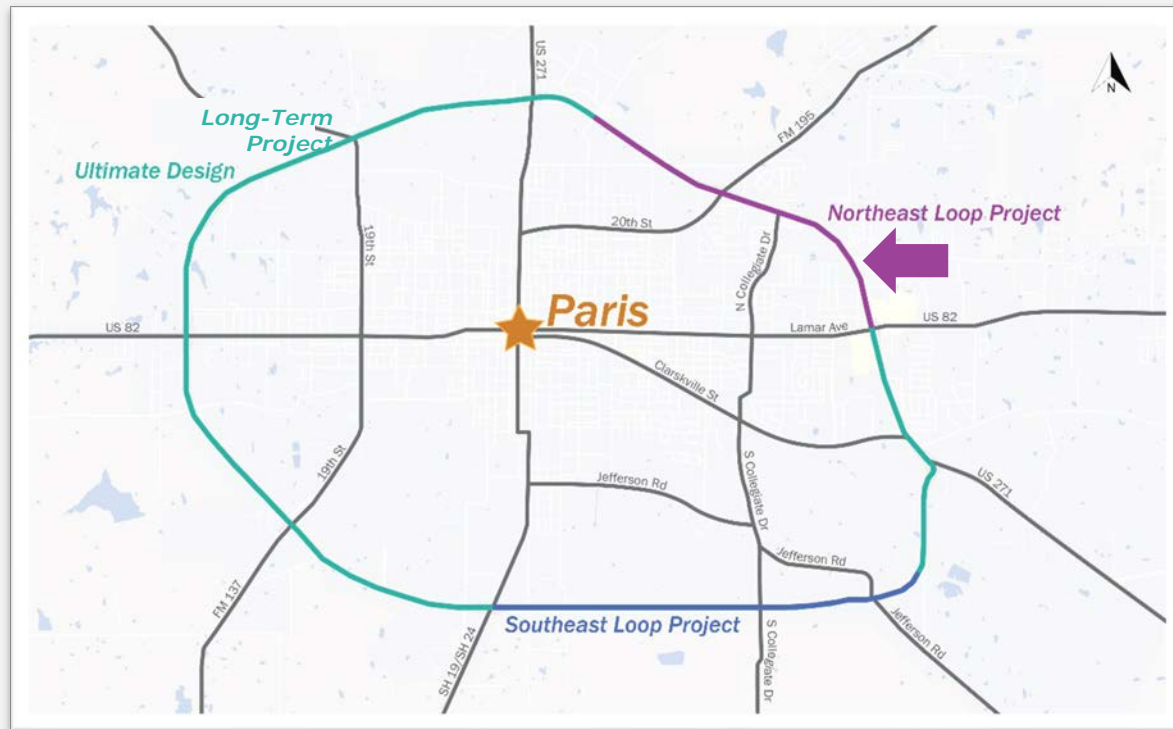
- PS&E:
  - 60% PS&E is available at Plans Online and will be made available in Bonfire.
  - 90% PS&E anticipated in September 2025.
  
- Right-of-way:
  - Survey is complete.
  - Acquisition is ongoing and anticipated to be clear prior to construction.
  
- Utilities:
  - Utility coordination is ongoing.
  - Pilot project for new Joint Duct Bank standards and specifications. The joint duct bank will be included in our plans to relocate all communication lines on one side of the roadway into the bank along with our new ITS connections.

## Loop 286 Long- and Short-Term Projects

The proposed long-term project encompasses the entire 15.5-mile Loop around Paris.

**Proposed Portion for this Project:**

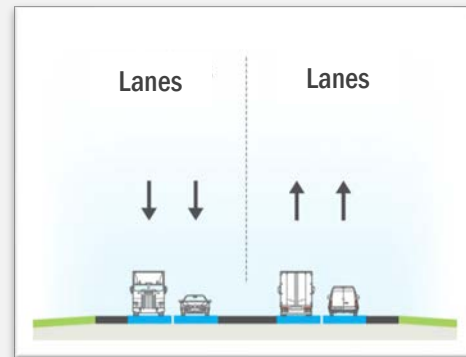
☆ **Northeast Loop**



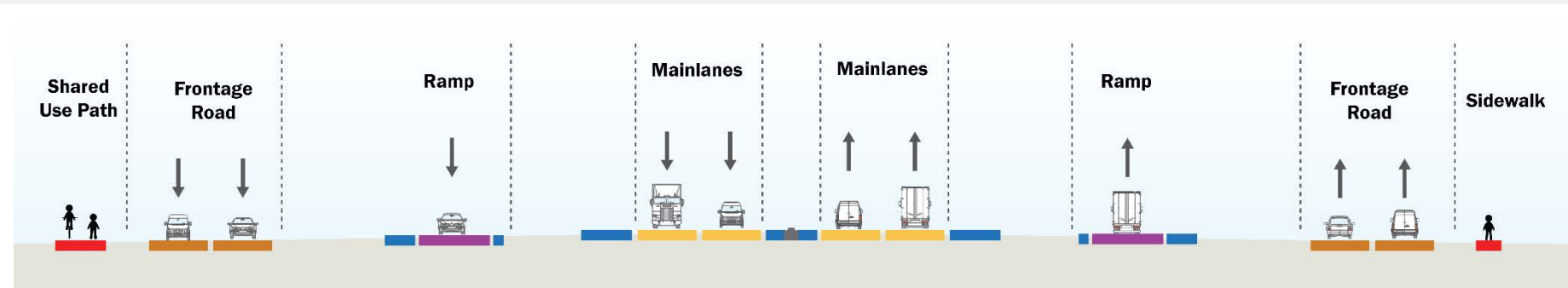
# Northeast Loop Proposed Improvements

- Separate traffic into:
  - High-speed, non-stop main lanes
  - Low-speed, controlled frontage roads

*Existing Typical Section*



*Proposed Typical Section*





# Northeast Loop Proposed Improvements

- Add continuous one-way frontage roads that run from Still House Road to Pine Mill Road.
- Construct a new overpass at North Collegiate Drive with signals at intersections and turnarounds (u-turns) in both directions.
- Reconstruct overpass at FM 195 with 3-lane frontage roads and turnarounds (u-turns) in both directions.
- Installation of new entrance and exit ramps at Pine Mill Road and Collegiate Drive and reconstruct ramps at FM 195 and Stillhouse Road
- Improve drainage by adding culverts, curbs, gutters, and storm drains.



*Overpasses at North Collegiate Drive would look similar to the Pine Mill Road Intersection  
(Photo credit: The Paris News)*

# Northeast Loop Proposed Improvements

- Construction of a high number of retaining walls throughout the project.
- Add sidewalks and shared-use paths for bicycle and pedestrian traffic.
- Bridge Construction at Stillhouse Creek
- Improve safety with driveway access adjustments
- Improve safety with illumination installed throughout project
- Inclusion of a Utility Duct Bank to be installed with this project



Current Signage along the Northeast Portion  
of Loop 286

## Project Overview – Stillhouse Road

- Reconstruction of the entrance and exit ramps on the east side of Stillhouse Road.
- Frontage roads to be constructed.
- Stillhouse Road Overpass will not be constructed under this project.
- This location is a major ingress and egress for both Paris Regional Medical Center and North Lamar ISD.



LP 286 at Stillhouse Rd. ramp reconstruction



## Project Overview – Stillhouse Creek

- Bridge will be constructed for the frontage roads and main lanes at Stillhouse Creek, East of Stillhouse Road.
- This location has a history of high water in heavy rain events.



LP 286 at Stillhouse Creek bridge  
construction

## Project Overview – FM 195 Overpass

- FM 195 overpass to be reconstructed.
- Turnarounds will be added on both the east and west sides of the bridge.
- Frontage Roads will be constructed through the location with new signal operations.
- Entrance and Exist Ramps will be reconstructed.
- FM 195 is a major traffic generator as it is the main route to Hochatown/Broken Bow Oklahoma.



LP 286 at FM 195 Reconstruction



## Project Overview – Collegiate Drive Overpass

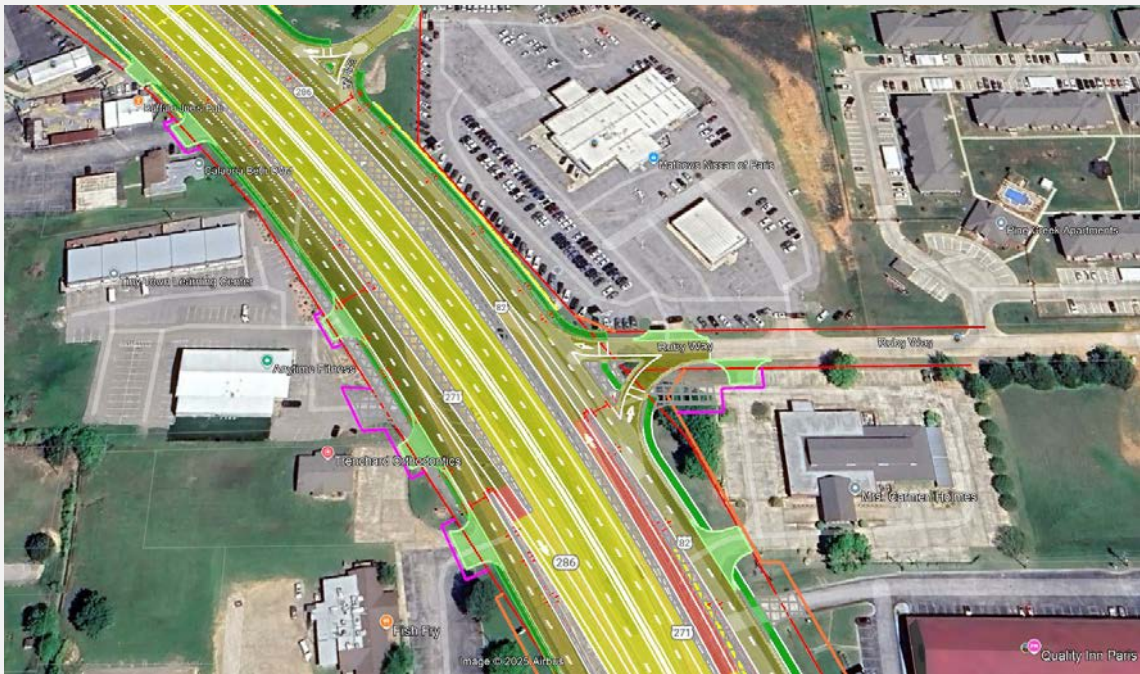
- A proposed overpass will be constructed at the intersection of LP 286 and Collegiate Drive.
- Turnarounds will be constructed on both the east and west sides of the new overpass.
- Frontage Roads will be constructed through the location with new signal operations.
- Proposed Entrance/Exit ramps will be constructed (currently no ramps are present).
- Heavily commercialized area with heavy daytime traffic.



LP 286 at Collegiate Drive

## Project Overview – West of Pine Mill Road

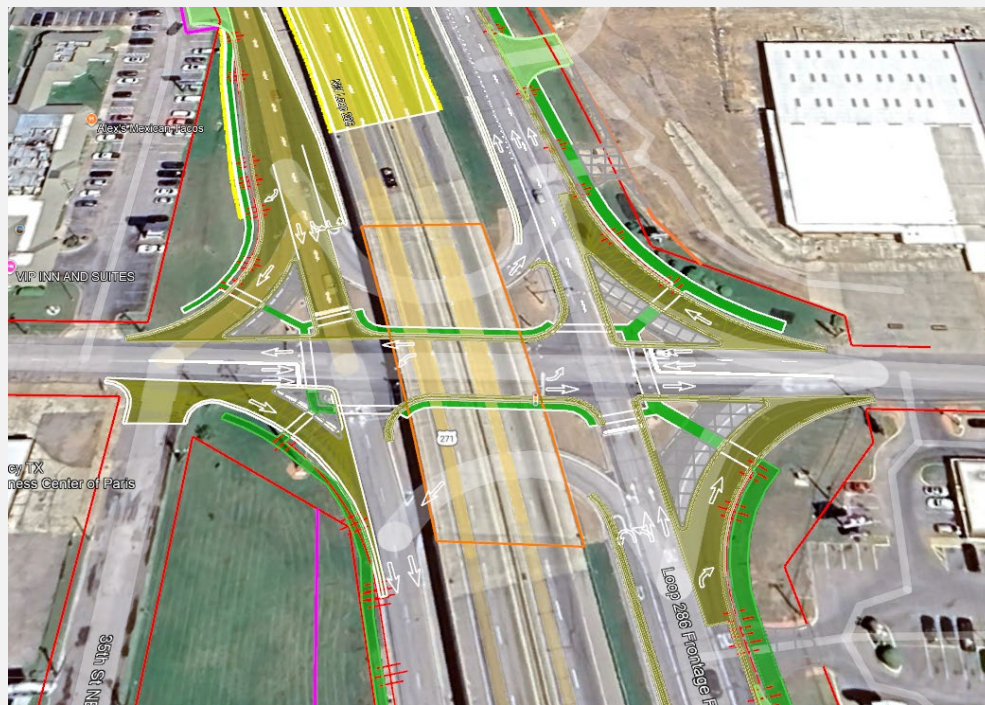
- Frontage roads will be installed through the location.
- Existing west bound access road at the Nissan dealership will be replaced with the west bound frontage road.
- Existing east bound access road at Anytime Fitness will be removed and replaced with east bound frontage road.
- Proposed west bound exit ramp and east bound entrance ramp to be constructed. This will reverse the current configuration.



LP 286 Section North of Pine Mill Road

## Project Overview – Pine Mill Road

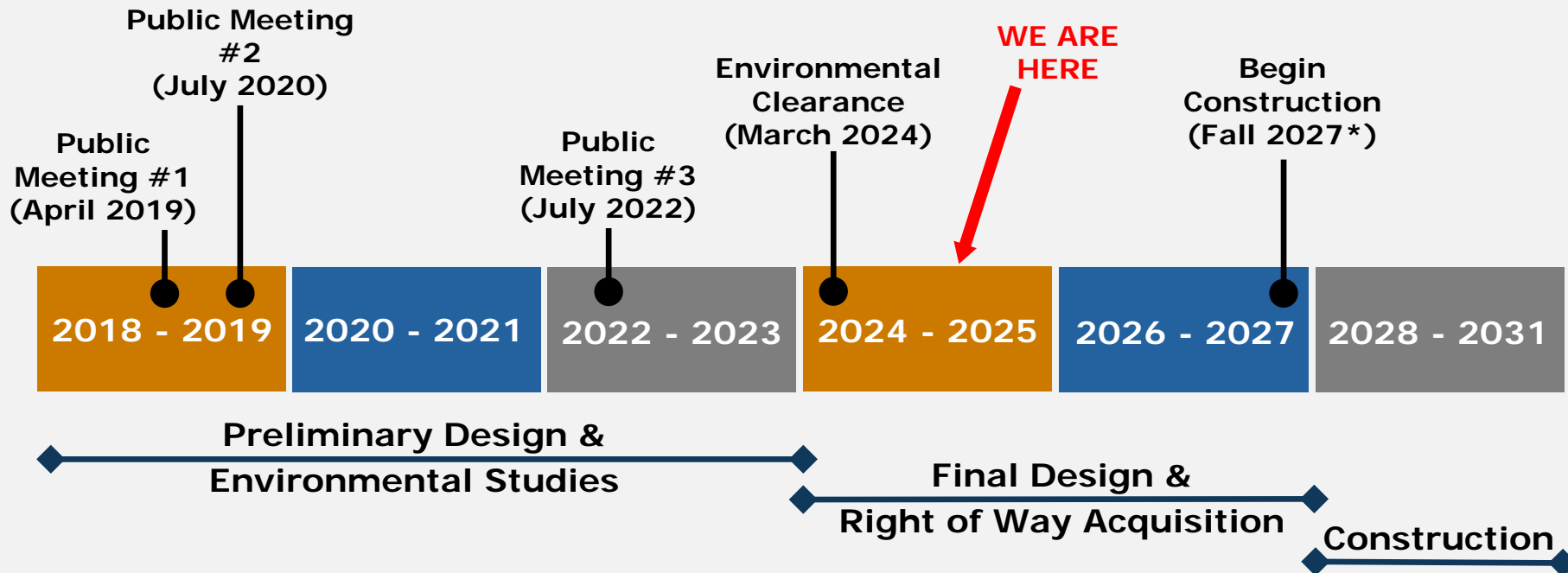
- Bridge at the Pine Mill overpass will not be reconstructed.
- East and west bound frontage roads will be reconstructed.
- Intersection turns will also be reconstructed and widened.
- Signal adjustments will be made as needed.



LP 286 Section at Pine Mill Road

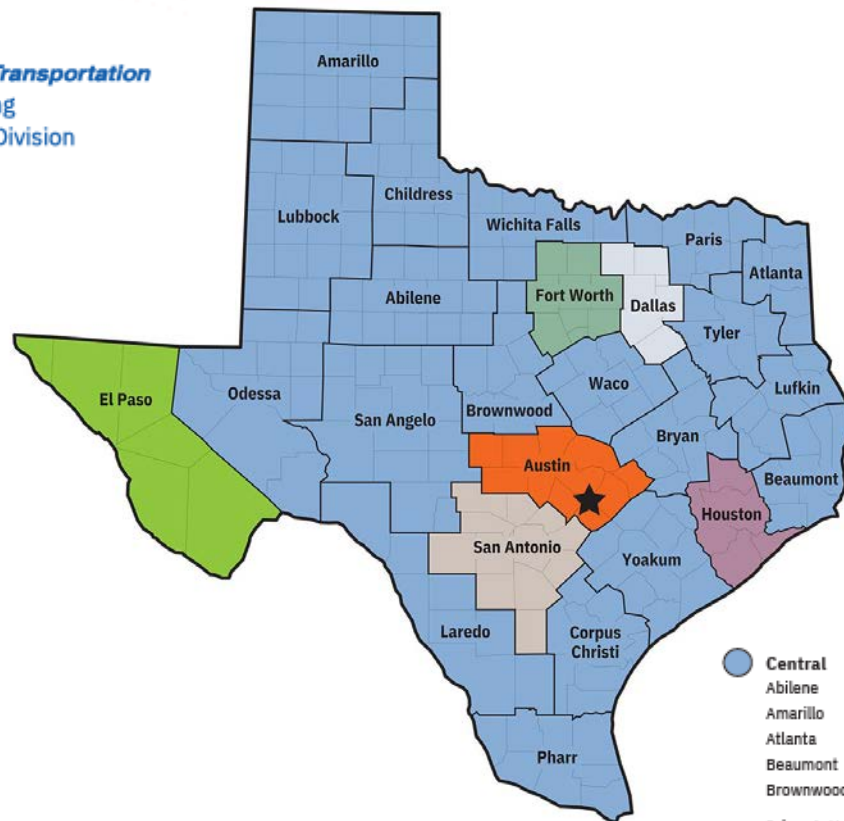


# Northeast Loop Project Development Timeline



\*These dates are preliminary and subject to change.

  
Texas Department of Transportation  
Professional Engineering  
Procurement Services Division



	<b>Central</b>		
Abilene	Bryan	Lubbock	Tyler
Amarillo	Childress	Odessa	Waco
Atlanta	Corpus Christi	Paris	Wichita Falls
Beaumont	Laredo	Pharr	Yoakum
Brownwood	Lufkin	San Angelo	

Jaime A. Vela, P.E.  
512.416.2007 or 956.712.7730  
[Jaime.A.Vela@txdot.gov](mailto:Jaime.A.Vela@txdot.gov)

## Procurement Timeline (Tentative\*)

Pre-RFP Meeting	Tuesday, May 27, 2025
RFP Posted in Bonfire	By June 13, 2025
RFP Closing Date	July 3, 2025
Proposal Evaluation Complete	Late July 2025
Provider Selection	Mid to Late August 2025
Finalize & Execute Contract	January 2026

\*All dates are subject to change

## Wrap Up and Next Steps

Thank you all for joining the Pre-RFP meeting!

- Email all questions from the Pre-RFP meeting to [Allison.Kurwitz@txdot.gov](mailto:Allison.Kurwitz@txdot.gov) by 5:00 p.m. CST, on June 3, 2025.

Subject line: **6251 Pre-RFP Meeting Question**

- Presentation, attendee list, relevant questions/answers, and draft preclusion document will be posted to TxDOT website under “Consultant Information Meetings”:

[Pre-RFP Meeting – CEI Specific Deliverable Contract for Loop 286, US 82 – Paris District](#)

