



Pre-RFP Meeting – Materials Engineering

San Antonio District



March 7, 2025



- | | | |
|---|--|------|
| 1 | Instructions / Introductions | 9:00 |
| 2 | Solicitation Process / Procurement Information | |
| 3 | Final Thoughts | |
| 4 | Questions | 9:30 |



THANK YOU FOR YOUR ATTENDANCE!

Virtual Attendees:

- ❖ Be sure your full name is showing up correctly.
- ❖ Please stay muted.
- ❖ This meeting will not be recorded, and attendees may not use any form of audio or video recording, photography, automated transcription services, or AI-based analysis tools.



This presentation is for **INFORMATIONAL PURPOSES ONLY** and subject to change.



- You will be provided an opportunity to ask questions after this presentation.
- Attendance sheet(s), presentation, and relevant questions with responses, will be posted online by Tuesday, 3/11/25.

1. Introductions - Procurement Support Members



Procurement Support	Title	Office	Role
Phil Howlett, P.E.	Lead PEPS Engineer	PEPS – San Antonio Service Center	Procurement Engineer (PcE)
Clara Carbajal-Sanchez P.E.	Service Center Manager (SCM)	PEPS – San Antonio Service Center	Support
Wanda Williams	Contract Specialist	PEPS – San Antonio Service Center	Contract Administration





CST Members	Title	Office	Role
Jose Emilio Ramos, P.E.	Transportation Engineer Supervisor	San Antonio District	Evaluator
Manual Rodriguez	Laboratory Supervisor	San Antonio District	Evaluator
Alejandro Miramontes, P.E.	Transportation Engineer	San Antonio District	Evaluator



**PLEASE - DO NOT CONTACT
the CST members regarding this procurement.**



HELP #EndTheStreakTX

End the streak of daily deaths on Texas roadways.

TxDOT.gov
#EndTheStreakTX Toolkit





4 x \$3.0 Million

Indefinite Deliverable Contracts with Work Authorizations

Non-Federal with HUB Goal

STATE FUNDS

HUB GOAL

- 23.7%

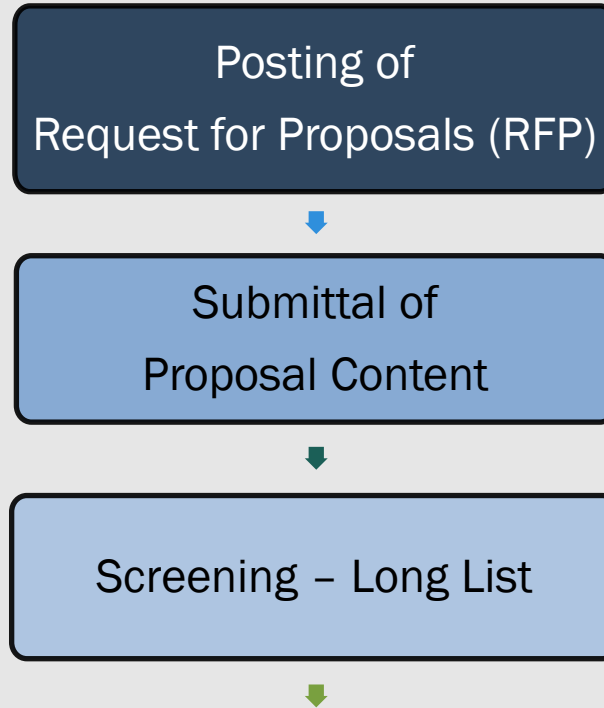
PROCUREMENT PROCESS

ONE-STEP PROCESS

1. Request for Proposals (RFP) Evaluations

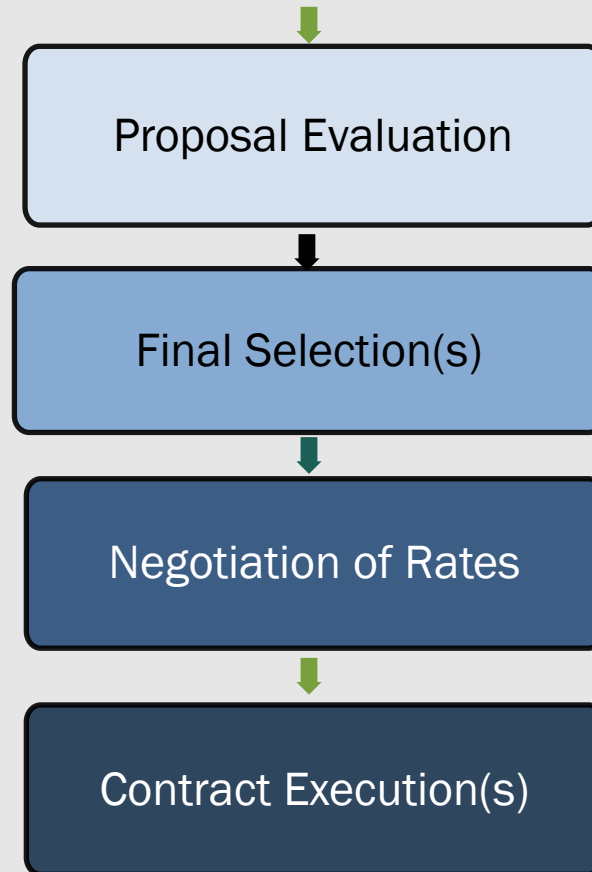


Process of RFP Evaluation





Process of RFP Evaluation





- Standard Materials Engineering Scope of Services
- Plus:
 - Pavement Design Services
 - Pavement Evaluation



Standard Work Categories

<u>SOLICITATION: 15-5RFP0001</u>		
PS Solicitation No. 601CT0000006211		
Contract Discipline: Materials Engineering		
Category	Category Name	% of work
12.1.1	Asphaltic Concrete Production	45.50%
12.1.2	Portland Cement Concrete	5.00%
12.1.3	Materials Engineering	1.00%
12.1.4	Asphaltic Concrete Placement	2.00%
12.1.5	Portland Cement Concrete Placement	1.00%
12.1.6	Embankment/Subgrade/Backfill/Base Production	25.00%
12.1.7	Embankment/Subgrade/Backfill/Base Placement	2.00%
12.2.1	Concrete Plant Inspection And Testing	1.00%
12.2.5	Hot Mix Asphalt (HMA) Plant Inspection and Testing	0.50%
12.4.1	Pavement Design Services	4.00%
12.5.1	Pavement Evaluation	10.00%
14.1.1	Soil Exploration	1.00%
14.2.1	Geotechnical Testing	2.00%
Procurement Totals:		100.00%

(* Categories and Percentages are subject to change)



DEPUTY PROJECT MANAGER

- Not anticipated

PRECLUSIONS:

- None anticipated

CORE TEAM RESTRICTIONS:

- None anticipated



- ❖ PEPS procurements are posted in the Bonfire electronic submittal and evaluation tool (eSET).
 - » Register on Bonfire
 - » Bonfire Frequently Asked Questions

- ❖ Bonfire related questions must be submitted to PEPS_COE_Bonfire@txdot.gov.

- ❖ Proposals submitted by other means will not be considered.



- ❖ Project Team Composition (PTC) is now on Salesforce CCIS Community Site
- ❖ Information can be found at <https://www.txdot.gov/business/peps/training-and-events.html>

Solicitation Process – PM/Task Lead requirements



Task Leads for each of the advertised standard work categories must be pre-certified by the closing date of the solicitation



A firm providing a task leader must have active precertification status in that category by the closing date of the solicitation



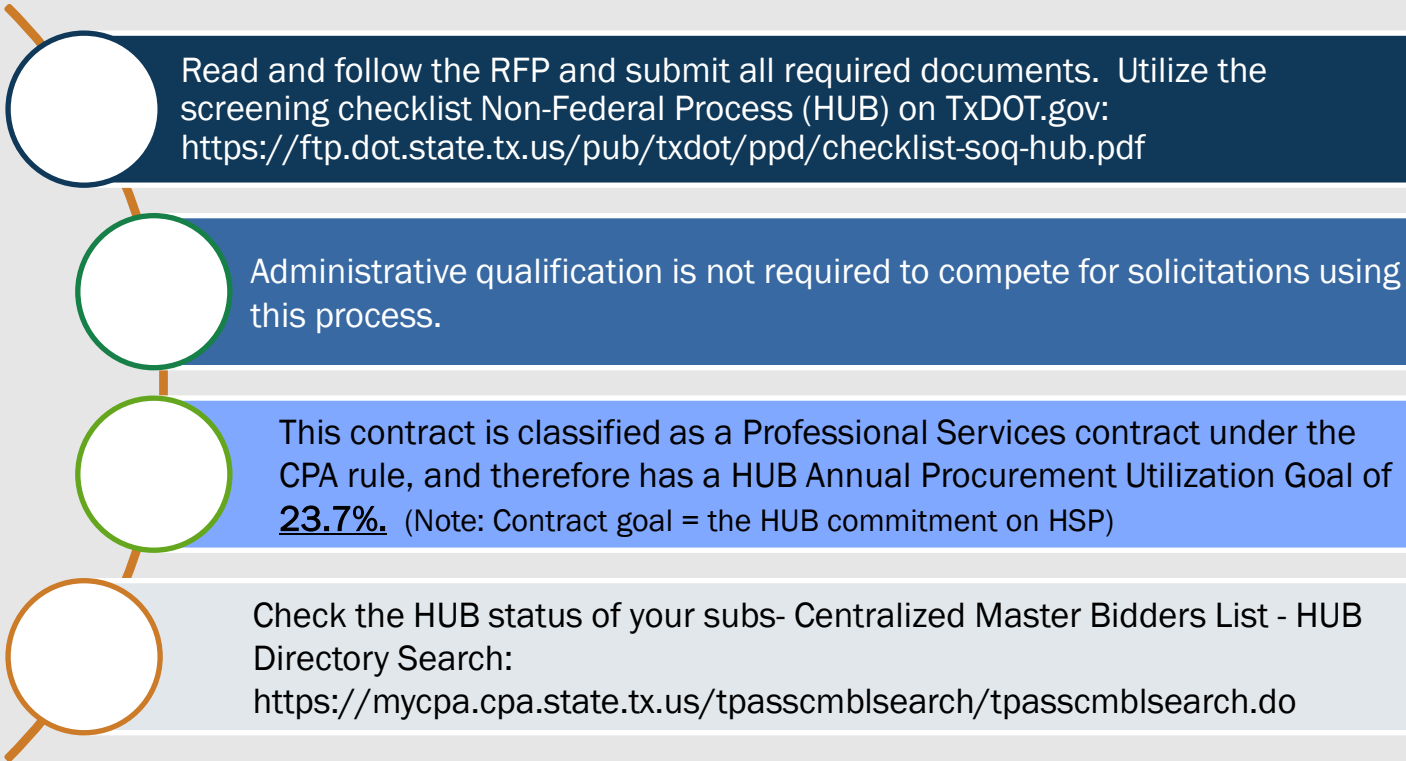
A task leader noted in the Proposal must match what is listed on the PTC form for the same Work Category or the Proposal may be considered non-responsive



The PM identified in the Proposal must match the PM listed on the questionnaire Attachment 1 Cover Page or the Proposal will be considered non-responsive

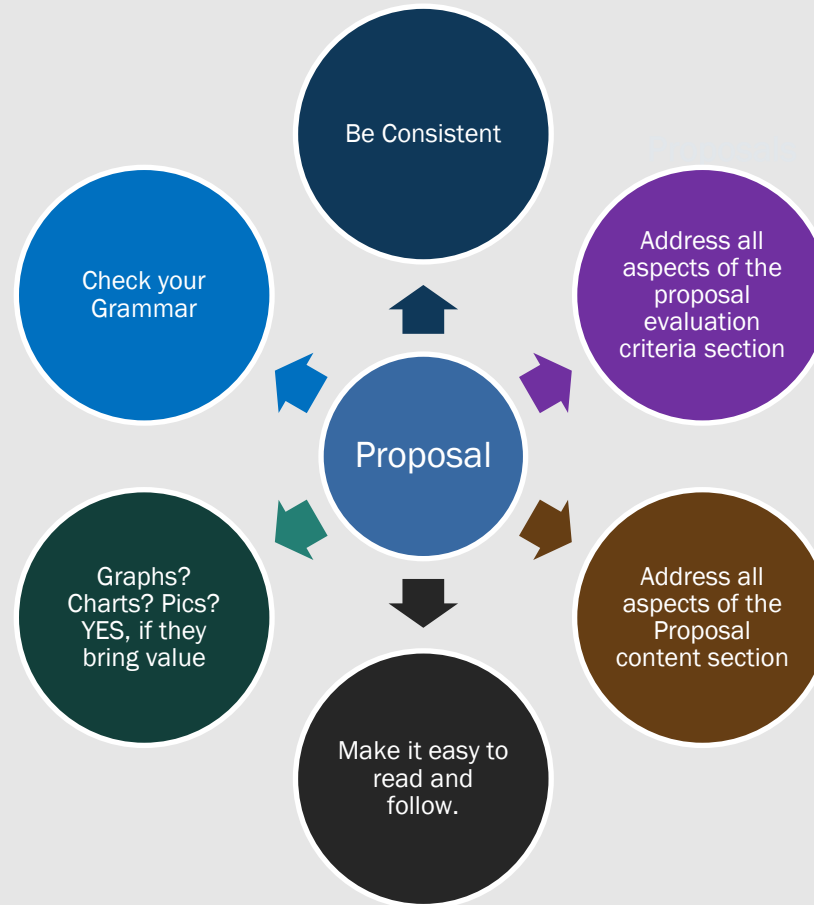


Past performance scores from PS-CAMS. The median score for the PM or Firm will be used if they do not have a PS-CAMS score.





Evaluation Criteria	Included Elements	Weighting for Evaluation of Proposal
Technical approach	Project understanding, project approach, innovative concepts or alternatives	tbd
Project Manager's relevant experience	Experience with similar or related projects, including both technical and management experience	tbd
Project planning and management	Project staffing and resource management (who, how, and why), communication plan, and quality control procedures. Includes the prime firm's past experience with utilizing subproviders and meeting program goals (HUB or DBE) and/or how it plans to utilize subproviders to meet the goals on this contract. Also may include project scheduling or phasing for SD projects	tbd
Key staff's relevant experience	Experience with similar projects	tbd
Past Performance Score		tbd
Total		100





Task	*Date
RFP posting	Week of March 17th
Proposal due date	Week of April 7th
Provider Selection	Week of April 28 th
Contract Execution	June 2025

(* dates are subject to change)



- The RFP will dictate the requirements.
- TxDOT Website has a lot of information to help
- Check for addenda
- If you have a question about the RFP, follow the process in the RFP to ask the question.

5. Any Questions? (Thank you!!)



You may submit your questions using MS-Teams chat.

