



March 10, 2025

Pre-Request for Proposal (RFP) Meeting

PS&E Services for the I-30 Hunt County East Project

Paris District

Professional Engineering Procurement Services (PEPS)

Solicitation No. 601CT0000006203; RFP No. 01-5SDP5001

**Eyes off
me and on
the road.**



**Need help with all the distractions?
There are apps for that.**



LIFESAVER is a free app that detects when you're driving and blocks phone use. Parents can use it to see when their teens are behind the wheel and avoid texting them during that time.



YOU IN THE DRIVER SEAT is a free app for youth ages 16-25. Rewards are earned for any "safe" trips where there are no driving infractions like taking a phone call or sending a text.



SAFE 2 SAVE is a free app that rewards drivers for not touching their phone. If their phone is in use while driving, the app will trigger a "Don't Tech and Drive" notification and stop rewarding.



DO NOT DISTURB WHILE DRIVING (DND) MODE. Most phones have a DND While Driving mode that can be set to work automatically. DND reduces notifications, distractions, and screen activity.



TALK / TEXT CRASH

#EndTheStreakTX > **TXDOT**

TxDOT offers these as examples only and does not endorse, recommend, or make representations with respect to these mobile apps.

Table of Contents

4 | Housekeeping

5-6 | Introductions

7-10 | Contract Information

11-15 | Contract Selection Process

16-20 | Project Overview

22 | Questions

Housekeeping

- All correspondence via chat box during the meeting.
- There will be an opportunity to ask questions following this presentation by email at Bing.Wang@txdot.gov
 - Subject: "PAR PS&E I-30 Hunt County East Project Pre-RFP Questions" or;
 - You may type your questions in chat box during this presentation.
- Information to be posted online
 - MS Teams Attendance
 - Pre-RFP Presentation
 - Responses to relevant questions received

Consultant Selection Team (CST)

Important: Please do not contact the CST members.

CST Members	Office	Title
Mahi Naga, P.E.	AREA Office GREENVILLE (PAR)	Transportation Engineer
Duane Good, P.E.	TRANSP PLANNING & DEV (PAR)	Transportation Engineer Supvr
Greg Perry, P.E.	AREA Office SHERMAN (PAR) (PAR)	Transportation Engineer

Professional Engineering Procurement Services (PEPS)

Central Service Center (CSC)

PEPS Procurement Team	Office	Title
Jaime A. Vela, P.E.	PEPS Central Service Center	Director of Central Service Center
Bing Wang, P.E.	PEPS Central Service Center	Procurement Engineer
Cindy Barajas	PEPS Central Service Center	Contract Administrator

Contract Information - Overview

- The Paris District is procuring a PS&E specific Deliverable (SD) contract for the I-30 Hunt County East in Paris, Texas.
 - Procurement process for FY 2025, Wave 3 official calendar begins March 3, 2025.
 - One Specific Deliverable Contract
 - Federal Process with Interview
 - Disadvantage Business Enterprise (DBE) Goal – TBD

Contract Information – Standard Working Categories

1.5.1	Feasibility Studies
1.7.1	Traffic Demand Modeling
1.8.1	Public Involvement
1.9.1	Geographic Information System (GIS) and Data Analysis
2.1.1	Traffic Noise Analysis
2.2.1	Air Quality Analysis
2.3.1	Wetland Delineation
2.3.2	Conditional/Functional Assessment
2.4.1	Nationwide Permit
2.4.2	Clean Water Act Sec. 404 Permits
2.4.3	U.S. Coast G. & U.S. Army Corps Of Engr. Permits
2.6.5	Protected Species Evaluations
2.6.6	USFWS/ National Marine Fisheries Service Consultation
2.7.1	Sec. 4(F)/6(F) Evaluations
2.7.2	Historic Sites Sec. 4(f) Evaluations
2.10.1	Archaeological Surveys, Doc., Excavation, Testing Rpts
2.12.1	Socio-Economic & Environmental Justice Analysis
2.13.1	Hazardous Materials Initial Site Assessment
2.14.1	Environmental Document Preparation
2.15.1	Historical Research of Extant Bldgs, Struct, Landsc., & Obj.
2.15.2	Historical Surveys & Doc. of Bldgs, Struct, Landsc., & Obj.

Contract Information – Standard Working Categories (cont.)

3.2.1	Route Studies & Schematic Design
3.7.1	Traffic Operational Analysis
4.2.1	Roadway Design
4.4.1	Freeway Interchanges
4.5.1	Constructability Review
4.6.1	3-D Visualization and Animation Services
4.7.1	Traffic Safety Analysis
5.2.1	Bridge Design
5.5.1	Bridge & Non-Bridge Class Culvert and Inlet Design
5.6.1	Structural Engineering for Overhead Sign Supports
7.1.1	Traffic Engineering Studies
7.3.1	Traffic Signal Timing
7.4.1	Traffic Control Systems Analysis, Design & Implementation
7.5.1	Intelligent Transportation System
8.1.1	Signing, Pavement Marking & Channelization
8.2.1	Illumination
8.3.1	Signalization
8.4.1	ITS Control Systems Analysis, Design & Implementation
9.3.1	Pedestrian Facility Design
9.3.2	Accessibility Design
9.4.1	Bikeway Design

Contract Information – Standard Working Categories (cont.)

10.1.1	Hydrologic Studies
10.2.1	Roadway Hydraulic Design
10.3.1	Bridge Hydraulic Design
10.5.1	Bridge Scour Evaluations And Analysis
10.8.1	FEMA Regulations and Permits
12.4.1	Pavement Design Services
12.5.1	Pavement Evaluation
14.1.1	Soil Exploration
14.2.1	Geotechnical Testing
14.3.1	Transportation Foundation Studies
14.5.1	Evaluation & Design of Geotechnical Related Structures
15.1.1	Right of Way Surveys
15.2.1	Design Survey
15.3.1	Aerial Photogrammetry
15.3.2	Terrestrial Photogrammetry
15.3.3	Terrestrial LiDAR
15.3.4	Mobile LiDAR
15.3.5	Horizontal and Vertical Control
15.3.6	Airborne LiDAR
15.5.1	State Land Surveying
18.2.1	Subsurface Utility Engineering (Utility Eng. Investigation)
18.3.1	Utility Adjustment Coordination
18.4.1	Utility Engineering
18.6.1	Utility Management & Coordination Oversight
19.3.1	Financial Plan Review and Development (Design-Bid-Build)

Contract Selection – Federal with Interview (DBE) A Two-Step Process

Proposal Evaluation

- Short listed providers move to interview phase

Interview Evaluation

- Interview and Contract Guide (ICG) provides instructions

Selection

Contract Selection

Proposal Content

- Proposal will cover “Proposal Content” in a written format.
- CST determines weighting for criteria and number of pages.
- In developing the proposal, the Provider should focus on the evaluation criteria as they relate to the information in the Proposal Content.

Interview Content

- Interview presentation will cover “Interview Content”.
- CST determines weightings for criteria for interview evaluation.
- In developing the presentation, the Provider should focus on the evaluation criteria as they relate to the information in the Interview Content.

Contract Selection

Evaluation Criteria for Proposal and Interview

- CST determines weightings for criteria.
- Past Performance is used only in Proposal evaluation.

Evaluation Criteria	Included Elements	Weighting for Evaluation of Proposal
Technical approach	Project understanding, project approach, innovative concepts or alternatives	XX
Project Manager's relevant experience	Experience with similar or related projects, including both technical and management experience	XX
Project planning and management	Project staffing and resource management (who, how, and why), communication plan, and quality control procedures. Includes the prime firm's past experience with utilizing subproviders and meeting program goals (HUB or DBE) and/or how it plans to utilize subproviders to meet the goals on this contract. Also may include project scheduling or phasing for SD projects	XX
Key staff's relevant experience	Experience with similar projects	XX
Past Performance Score		5 to 15
Total		100

Contract Selection

Reminders


- ✓ Make sure to follow the instructions in the RFP document and submit all applicable documents required.
- ✓ Always refer to the RFP.
- ✓ If you have a question about the RFP, follow the Questions and Answer (Q&A) process.
- ✓ Check Bonfire for Addenda and Q&A.
- ✓ New update: Project Team Composition (PTC) form is now on CCIS


Avoid Disqualifications

- ✓ Check that all mandatory forms are in the proposal package.
- ✓ Prime and sub-providers providing engineering and design related services must be Administratively Qualified (AQ). Primes can look up subs-providers AQ status at the following website [Firms eligible to do business with TxDOT](#)
- ✓ Verify task leaders are pre-certified in standard work categories.
- ✓ Check NAICS codes to make sure they are correct.

Contract Selection

PEPS Contract Advertisements Link: [PEPS contract advertisements \(txdot.gov\)](https://www.txdot.gov/peps)

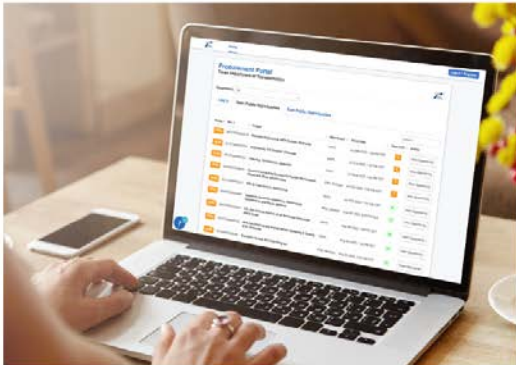


Discover Texas ▾ Data and maps ▾ Do business ▾ Explore projects ▾ Stay safe ▾ About ▾ 

Home / Business / Engineering, architectural, and surveying consultants / Business opportunities

PEPS contract advertisements


This page contains additional documents and information related to professional services solicitations.



Bonfire electronic submittal platform

PEPS procurements are posted in the Bonfire electronic submittal and evaluation tool (eSET) prior to each wave. Vendors will use eSET to submit responses to PEPS solicitations.

- [Bonfire frequently asked questions - August 2024](#)

txdot.bonfirehub.com 

Contract Selection

Procurement Timeline

Tasks	Dates <i>(Subject to change)</i>
Request for Proposals (RFP) Posting	March 2025
Proposals Due	April 2025
Short List	May 2025
In-Person Interviews, Paris District	June 2025
Provider Selection	Following Interviews
Rate and Level of Effort Negotiations Complete	August 2025
Contract Execution	September 2025

Project Overview – I-30 Hunt County East

I-30 Hunt County East

From Monty Stratton Parkway to East of FM 513

PARIS DISTRICT

CSJ: 0009-13-194, 0009-13-195, 0009-13-196

Project Overview

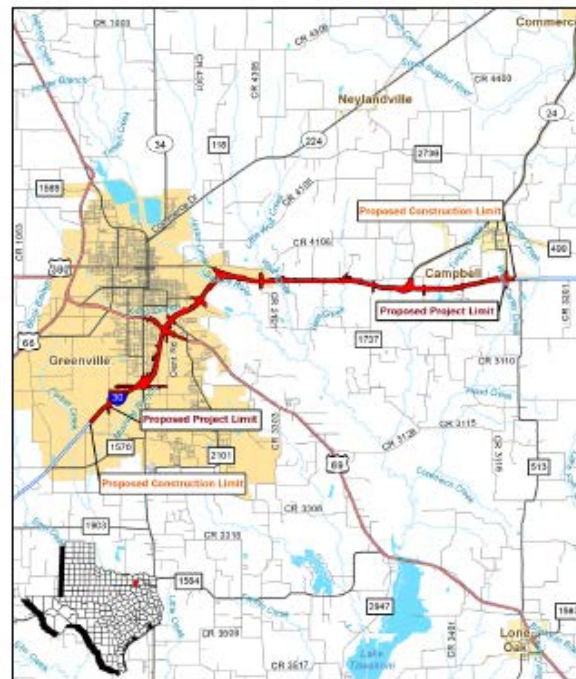
The proposed project would extend for a total of approximately 12.4 miles. The proposed improvements would add an eastbound and westbound mainline along I-30 and would increase inside shoulders to 10 feet in width. Frontage roads would be converted to one-way frontage roads. A 10-foot-wide shared use path is proposed on the outside of each frontage road through the City of Greenville, from the western project limit to the I-30 / Division Street interchange.

The proposed project would also include work on several interchanges and cross streets along the I-30 corridor, including: Monty Stratton Parkway, US 69 (Joe Ramsey Blvd N), BUS 69 (Moulton St), Division Street, SH 302, Lamar St, SH 24, and FM 513.

Project Goals and Objectives

- Improve Roadway Safety
- Enhance Mobility
- Reduce Traffic Congestion
- Improve Bicycle and Pedestrian Accommodations

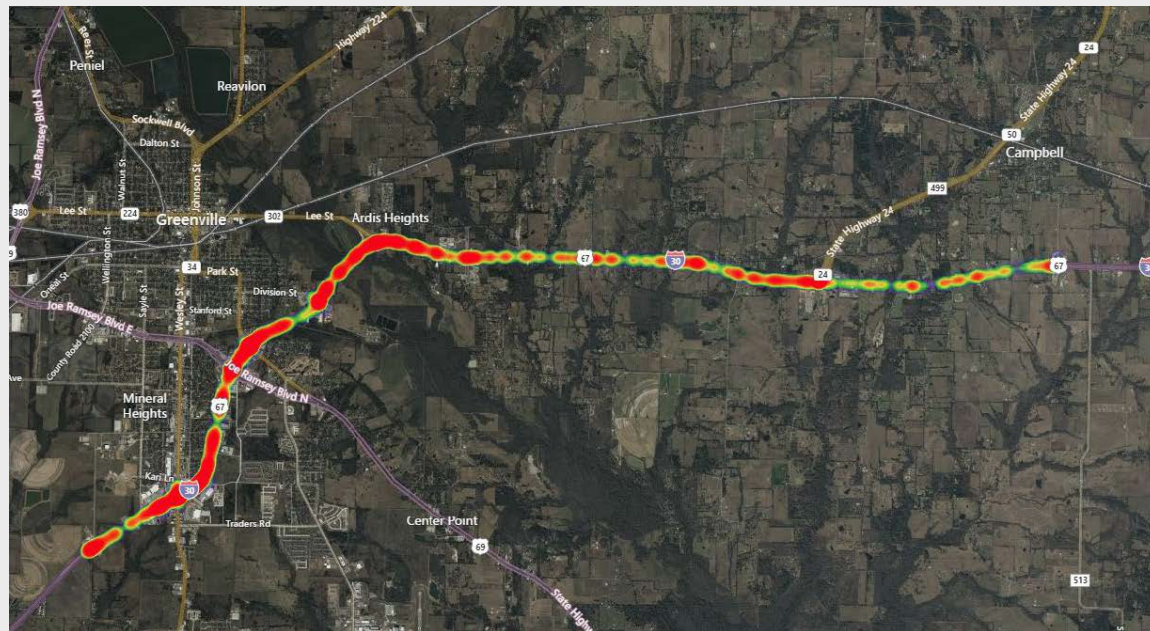
Project Location Map



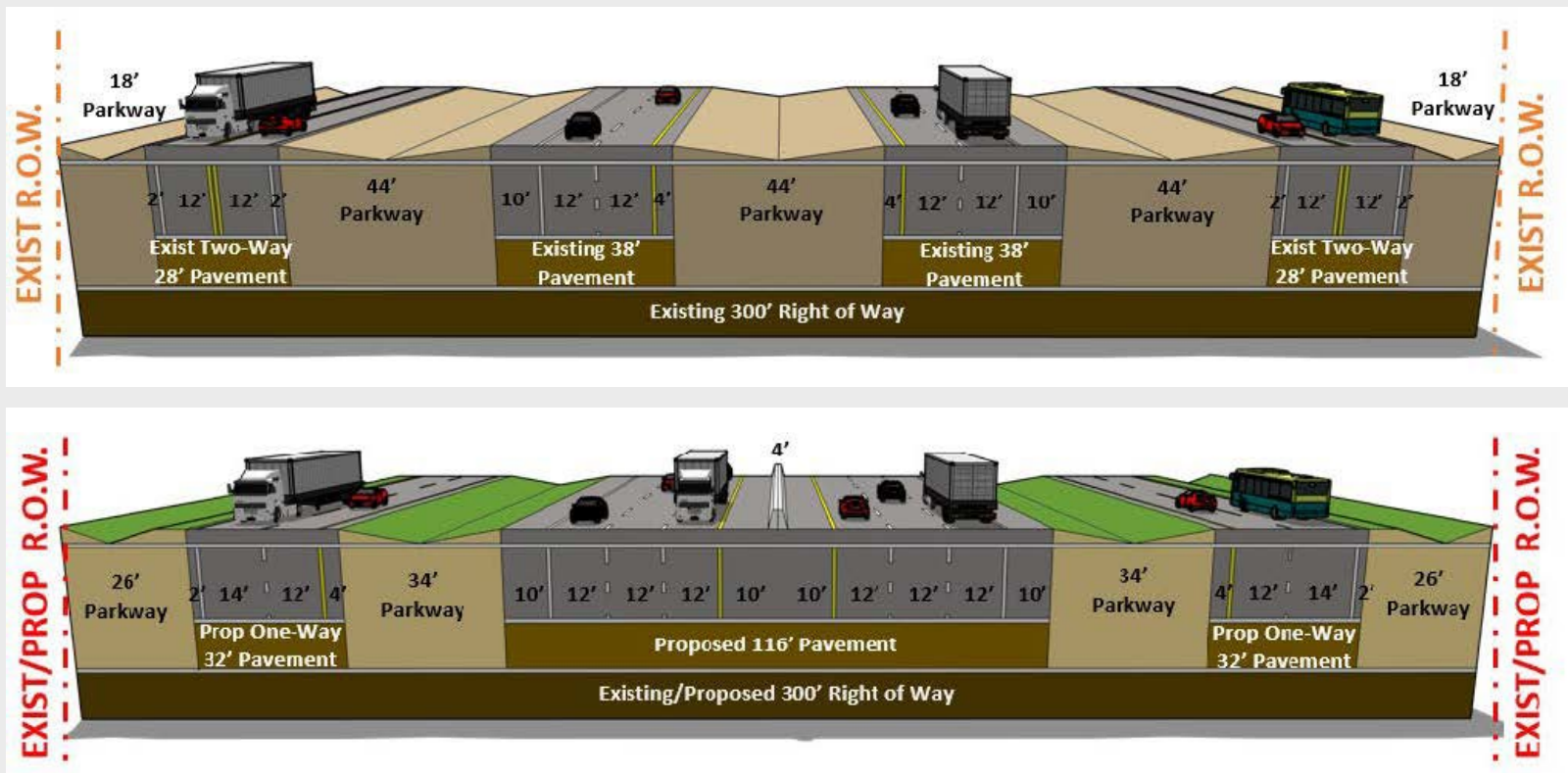
Crash Heat Map – I-30 Hunt County East

Approximately 200 crashes per year have occurred along this portion of I-30. As shown in the heat map on this slide, most crashes have occurred at or near major interchanges along the corridor, such as SH 34, US 69, Division Street, SH 302, and SH 24.

To improve safety, some of the proposed improvements throughout the project corridor include adjusting the roadway alignment to increase sight distances, improving ramping to reduce weaving movements, and reconfiguring the frontage roads to a one-way rather than two-way operation



Existing and Proposed Typical Sections— I-30 Hunt County East



Project timeline— I-30 Hunt County East



Schematic documents– Early Plan review stage

FTP link:

<https://ftp.dot.state.tx.us/pub/txdot-info/Pre-Letting%20Responses/Paris%20District/Early%20Plan%20Review/Early%20Review%20-%20IH%2030%20Hunt%20County%20East/>

Files:

DSR, Risk Workshop summary, H&H report, VE Study report, 100% schematic and 100% schematic Cross sections Rolls.

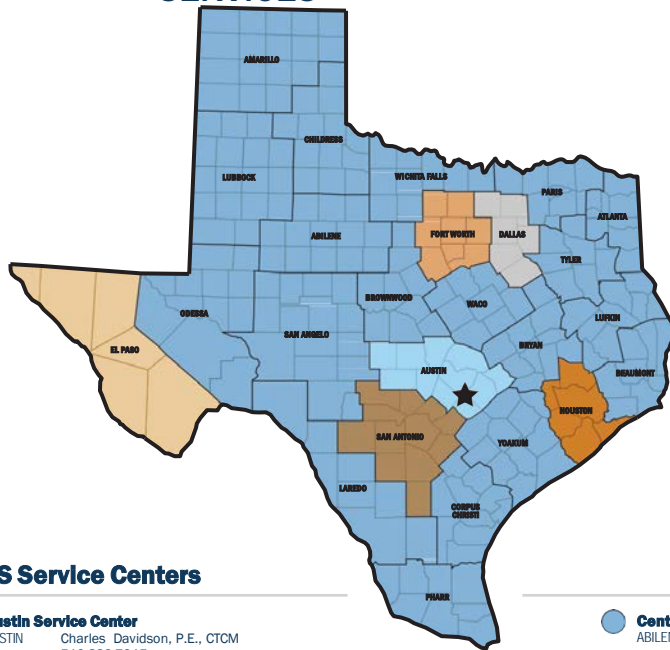
Conclusion



- Questions regarding this Pre-RFP meeting should be submitted to Bing Wang, P.E. at Bing.Wang@txdot.gov by Friday, March 7, 5:00 p.m. Central Time.
- MS Teams Attendance, Pre-RFP Presentation, and Responses to Relevant Questions will be posted on TxDOT website at Pre-RFP Meeting link, by Wednesday, March 12.



PROFESSIONAL ENGINEERING PROCUREMENT SERVICES



PEPS Service Centers

Austin Service Center
AUSTIN Charles Davidson, P.E., CTCM
512.832.7315
Charles.Davidson@txdot.gov

Dallas Service Center
DALLAS Joseph Jancuska, P.E.
214.320.6187
Joseph.Jancuska@txdot.gov

El Paso Service Center
EL PASO Jaime Perales, P.E., CFM
915.790.4231
Jaime.Perales@txdot.gov

Fort Worth Service Center
FORT WORTH Natasha Tabatabaii, P.E.
469.766.9281
Natasha.Tabatabaii@txdot.gov

Houston Service Center
HOUSTON Kimlinh Nguyen, P.E.
713.802.5799
Kimlinh.Nguyen@txdot.gov

Central Service Center
ABILENE BRYAN
AMARILLO CHILDRESS
ATLANTA CORPUS CHRISTI
BEAUMONT LAREDO
BROWNWOOD LUFKIN

San Antonio Service Center
SAN ANTONIO Clara Carbajal-Sanchez, P.E.
210.209.7885
Clara.CarbajalSanchez@txdot.gov

LUBBOCK
PARIS
PHARR
SAN ANGELO
TYLER
WACO
WICHITA
FALLS
YOAKUM

Jaime A. Vela, P.E.
512.416.2007 or
956.712.7730
Jaime.A.Vela@txdot.gov

Service Center for Divisions
AUSTIN Kori Rodriguez, P.E.
210.284.5048
Kori.Rodriguez@txdot.gov

★ PEPS Division Austin HQ

PEPS Division Director
Martin L. Rodin, P.E.
512.413.4310
Martin.Rodin@txdot.gov

Deputy Division Director
Lucio Vasquez, P.E.
512.925.9578
Lucio.Vasquez@txdot.gov

PEPS Support Centers

Business Operations Center
Roy Gonzales
512.781.8212
Roy.Gonzales@txdot.gov

Invoice Center
Tira Dobrozensky, CTCM
512.317.8511
Tira.Dobrozensky@txdot.gov

Center of Excellence
Dan Neal, P.E., P.G. CTCM, CTPM
512.416.2667
Dan.Neal@txdot.gov

DRIVE Program
Caleb Bryant, P.E., PMP
281.224.8484
Caleb.Bryant@txdot.gov

Center of Contract Utilization
Gail Morea, P.E.
713.876.1258
Gail.Morea@txdot.gov

Negotiations Center
Rebecca Pinto, P.E.
915.790.4344
Rebecca.Pinto@txdot.gov

Controls Center
Shana Thomas, CTCM, PMP
737.230.7238
Shana.Thomas@txdot.gov

Support Services Center
Tina Farias, CTCM, CTCD
432.202.2144
Tina.Farias@txdot.gov