

**Texas Department of Transportation  
Book 2 – Technical Provisions**

**US 77 UPGRADE FROM KINGSVILLE TO  
DRISCOLL PROJECT**

**Attachment 15-1  
Aesthetic Guidelines**

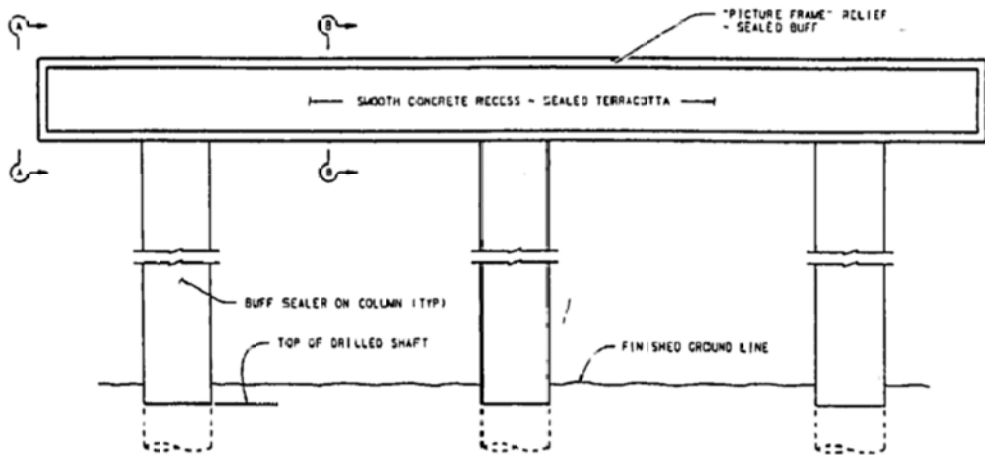
## **Bishop Centennial Logo:**



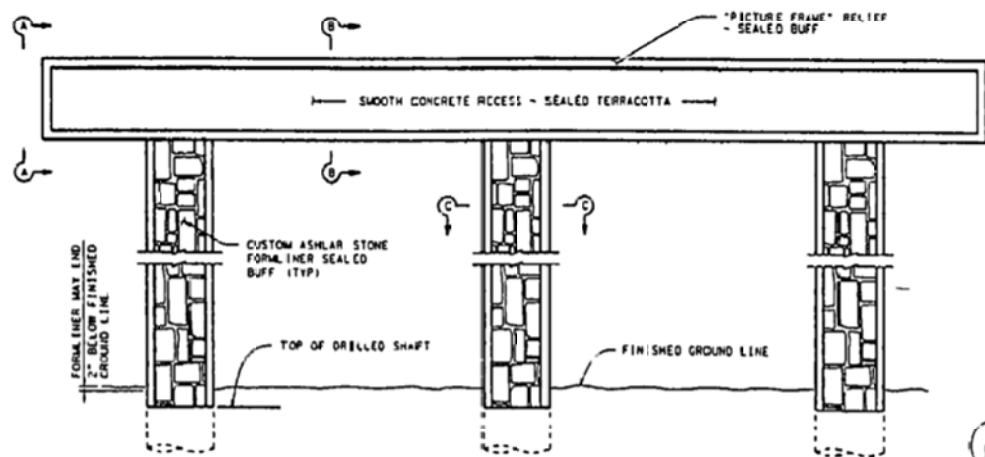
## **Bridge, Wall, and Misc Aesthetics Treatments:**

The aesthetics treatments shall be as required by Section 15 of the Technical Specifications and as shown on the attached drawings. These example drawings are provided as an aid in depicting aesthetic concepts to be used at intersecting streets, bridges over stream crossings are exempted from these requirements. DB Contractor shall develop final US77 project aesthetic plans and submit to TxDOT for review.

Substitute Terracotta and Buff shown on the sample drawings with Tan (HC136 Aztec Sand) and Dark Chocolate (HC117 Silk Chocolate) colors.

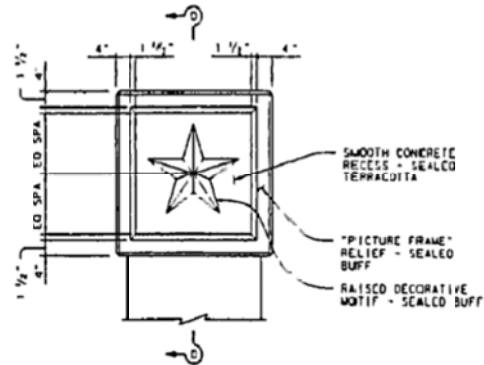


ELEVATION ~ ROUND COLUMNS

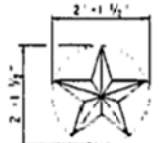


ELEVATION ~ SQUARE COLUMNS

- GENERAL NOTES:
1. CHAMFER ALL EXPOSED CAP EDGES  $\frac{1}{8}$ "
  2. FOR ASHLAR STONE FORMLINER DETAILS SEE AESTA (SPL11095-109) SHEET.
  3. THE TERRACOTTA SEALER SHALL CONFORM TO THE FEDERAL STANDARD COLOR I. D. NO. 30252.
  4. THE BUFF SEALER SHALL CONFORM TO THE FEDERAL STANDARD COLOR I. D. NO. 33711.
  5. SEALER SHALL NOT BE APPLIED TO THE BEARING SEATS

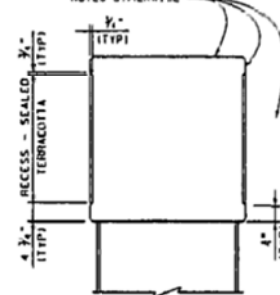


SECTION A-A  
SHOWING ROUND COLUMN

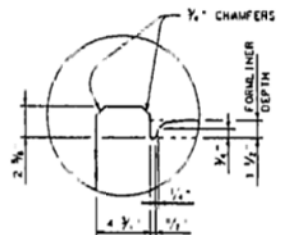


STAR DETAIL  
1 1/2" RAISED STAR MOTIF  
ENSCRIBED BY A 2 1/2" DIAMETER CIRCLE.

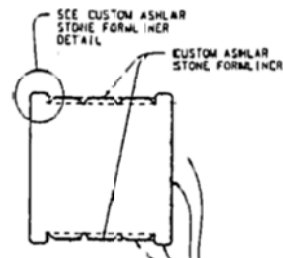
ALL CAP SURFACES  
SEALED BUFF UNLESS  
NOTED OTHERWISE



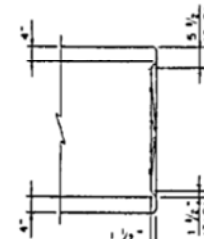
SECTION B-B  
SHOWING SQUARE COLUMN



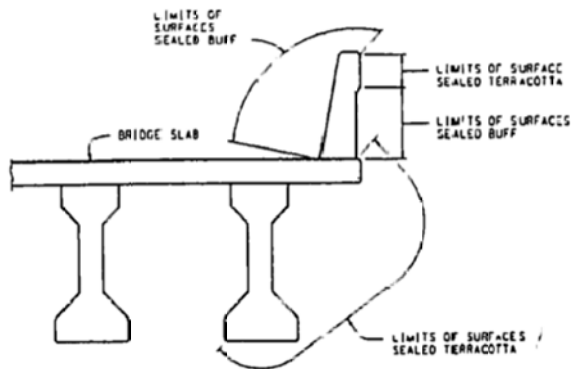
CUSTOM ASHLAR  
FORMLINER DETAIL



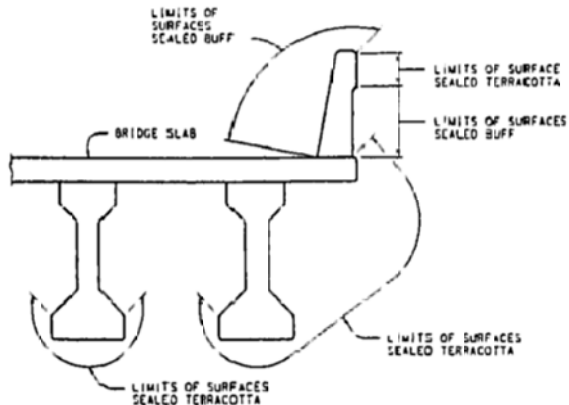
SECTION C-C



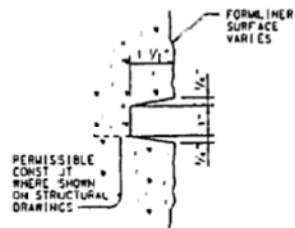
SECTION D-D



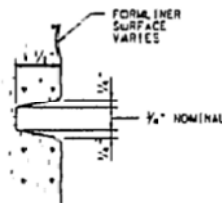
COLOR OPTION "A"



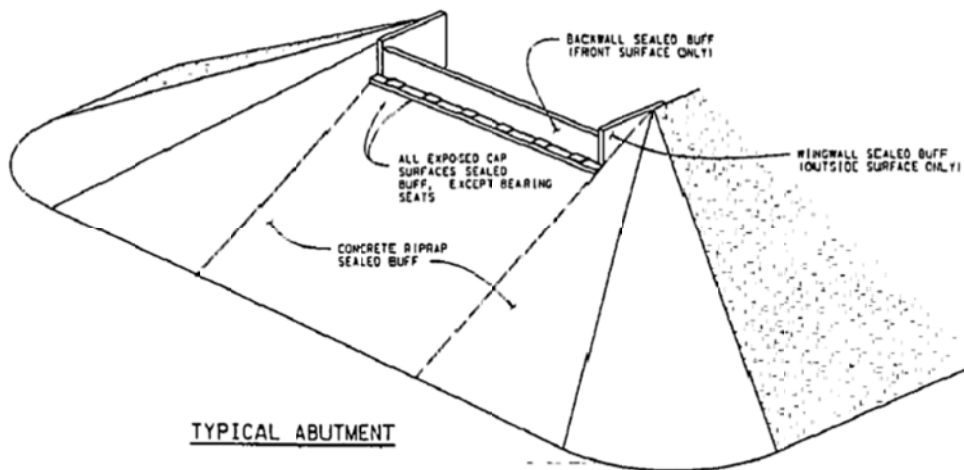
COLOR OPTION "B"



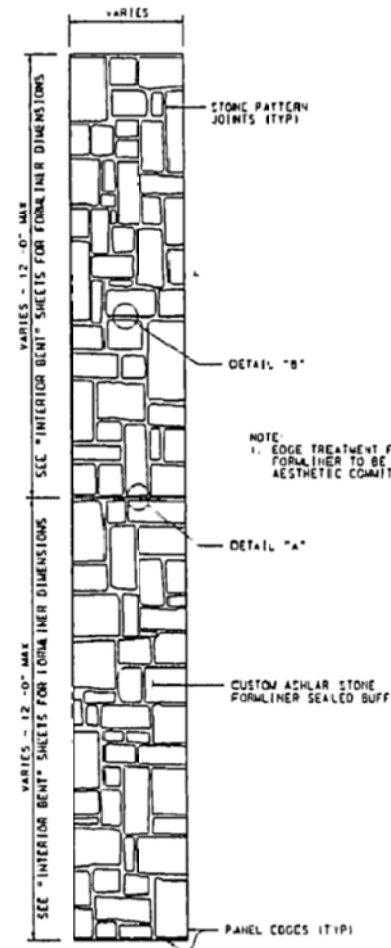
DETAIL A



DETAIL B



TYPICAL ABUTMENT

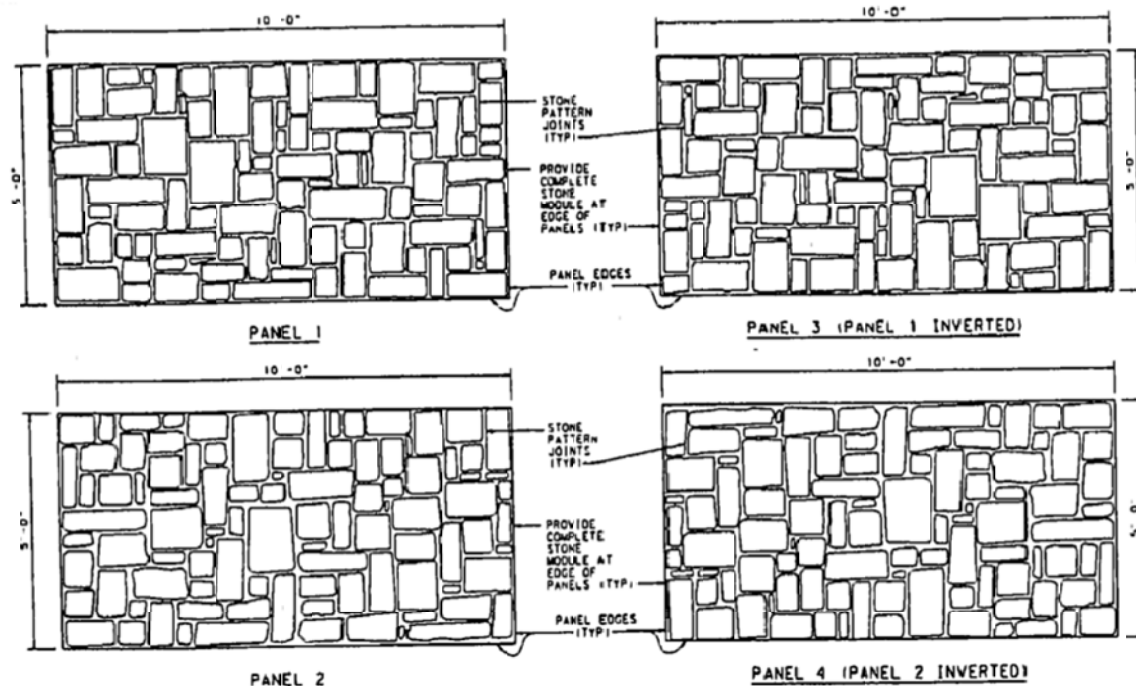


CUSTOM ASHLAR STONE FORMLINER PANEL  
FOR BENTS AND SIGN BRIDGE COLUMNS

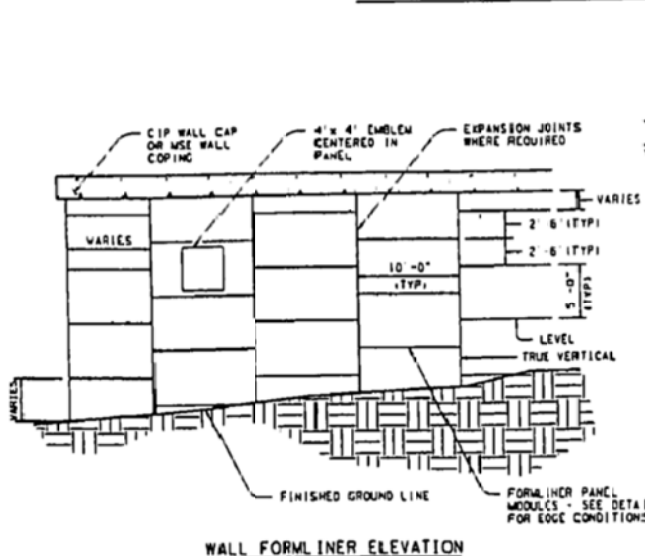
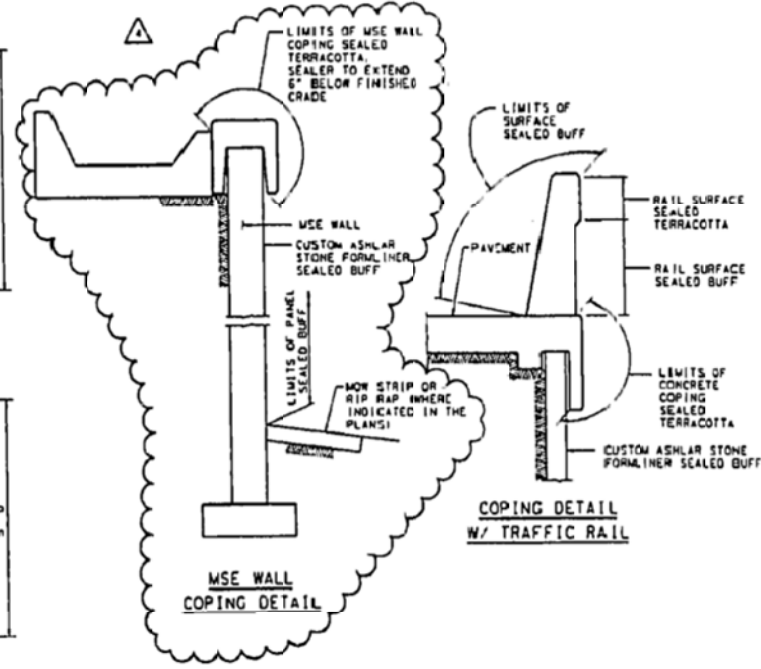
NOTE:  
1. EDGE TREATMENT FOR ASHLAR FORMLINER TO BE APPROVED BY AESTHETIC COMMITTEE CHAIRMAN

**GENERAL NOTES:**

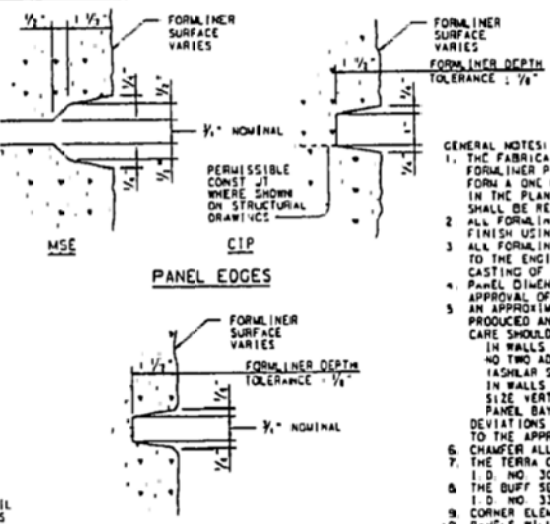
1. THE FABRICATOR SHALL NOT SPLICE, CUT AND JOIN, OR GLUE THE FORMLINER PANELS TOGETHER. EACH PANEL SHALL BE FABRICATED TO FORM A ONE PIECE UNIT TO THE SIZE AND SPECIFICATIONS SET FORTH IN THE PLAN SHEETS. FORMLINERS SHALL BE WASHED AND CLEANED AFTER EACH USE. FORMLINERS THAT HAVE BECOME DAMAGED OR WORN SHALL BE REPLACED BY THE CONTRACTOR.
2. ALL FORMLINER SURFACES SHALL RECEIVE A SURFACE AREA 1, CLASS B FINISH USING OPAQUE CONCRETE SEALER AS NOTED IN SPECIAL PROVISION.
3. ALL FORMLINER PANEL JOINTS SHALL BE SEALED IN A MANNER ACCEPTABLE TO THE ENGINEER, TO PREVENT LEAKAGE AT THE SURFACE UPON CASTING OF CONCRETE.
4. CHAMFER ALL EXPOSED CAP EDGES 3/4".
5. THE TERRACOTTA SEALER SHALL CONFORM TO THE FEDERAL STANDARD COLOR I. D. NO. 30252.
6. THE BUFF SEALER SHALL CONFORM TO THE FEDERAL STANDARD COLOR I. D. NO. 33711.



CUSTOM ASHLAR FORMLINER FOR MSE AND CIP WALLS

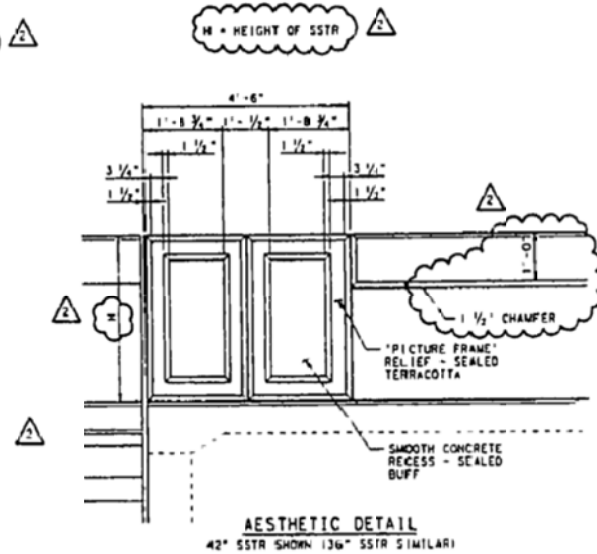
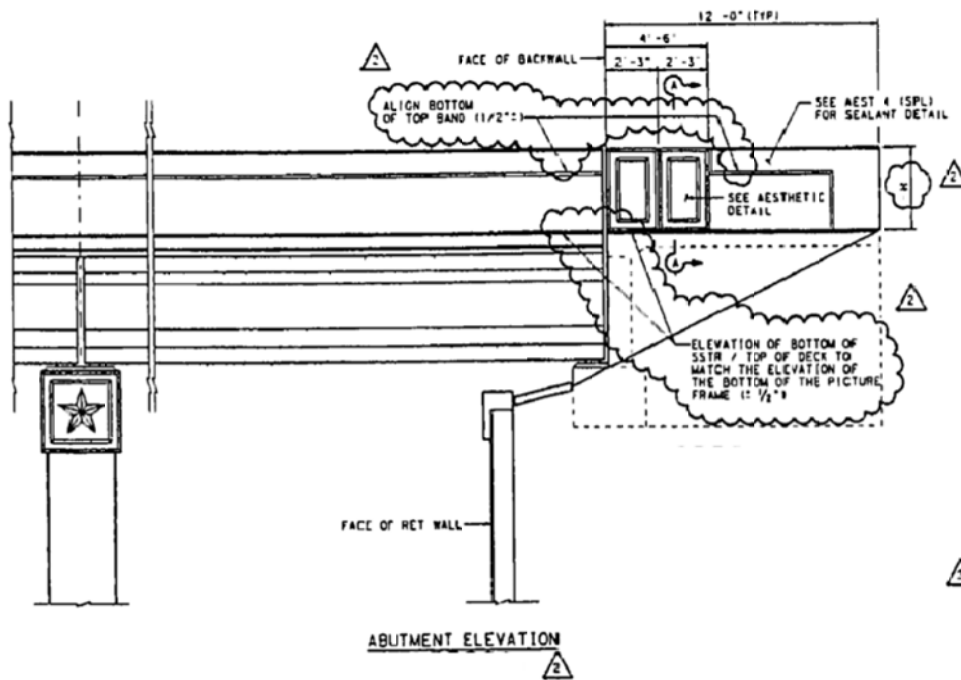
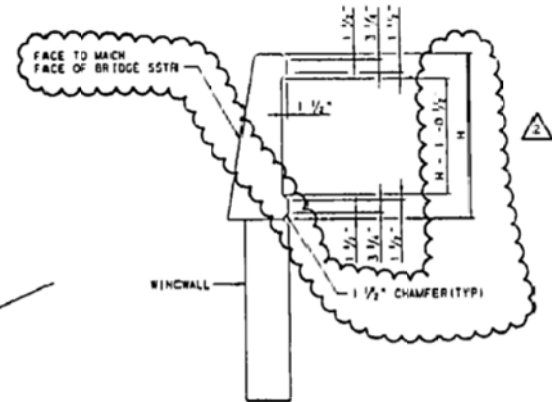
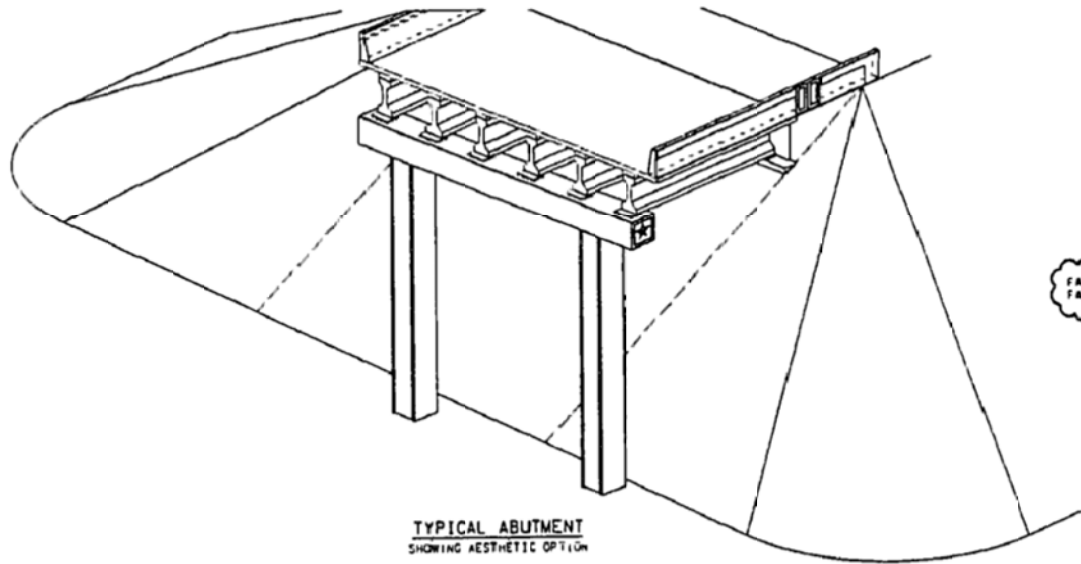


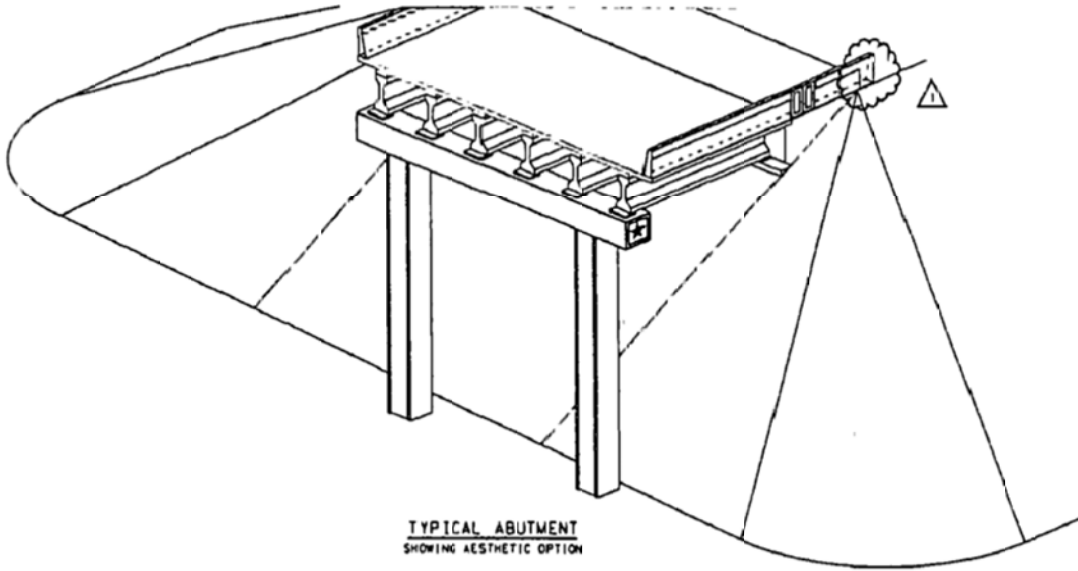
WALL FORMLINER ELEVATION



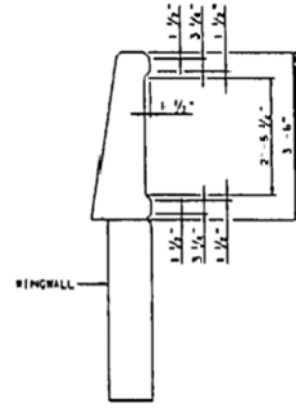
STONE PATTERN JOINTS

- GENERAL NOTES:
1. THE FABRICATOR SHALL NOT SPLICE, CUT AND JOIN, OR GLUE THE FORMLINER PANELS TOGETHER. EACH PANEL SHALL BE FABRICATED TO FORM A ONE-PIECE UNIT TO THE SIZE AND SPECIFICATIONS SET FORTH IN THE PLAN SHEETS. FORMLINERS THAT HAVE BECOME DAMAGED OR WORN SHALL BE REPLACED BY THE CONTRACTOR.
  2. ALL FORMLINER SURFACES SHALL RECEIVE A SURFACE AREA 1, CLASS B FINISH USING OPaque CONCRETE SEALER AS NOTED IN SPECIAL PROVISION
  3. ALL FORMLINER PANEL JOINTS SHALL BE SEALED IN A MANNER ACCEPTABLE TO THE ENGINEER OF RECORD, TO PREVENT LEAKAGE AT THE SURFACE UPON CASTING OF CONCRETE.
  4. PANEL DIMENSIONS INDICATED ARE NOMINAL AND SUBJECT TO FINAL APPROVAL OF THE ENGINEER OF RECORD
  5. AN APPROXIMATELY EQUAL NUMBER OF PANELS SHALL BE PRODUCED AND RANDOMLY PLACED ON THE RETAINING WALL. CARE SHOULD BE TAKEN TO AVOID:
    - IN WALLS COMPOSED OF A NON-STAGGERED SINGLE ROW OF PANELS, NO TWO ADJACENT HORIZONTAL PANELS SHALL BE OF THE SAME (ASHLAR STONE PATTERN) TYPE.
    - IN WALLS CONTAINING MULTIPLE ROWS OF STAGGERED PANELS, NO TWO FULL SIZE VERTICALLY ADJACENT PANELS INCORPORATED IN THE SAME VERTICAL PANEL BAY (OR LINE) SHALL BE OF THE SAME (ASHLAR STONE PATTERN) TYPE.
 DEVIATIONS TO THIS PANEL PLACEMENT PROTOCOL ARE SUBJECT TO THE APPROVAL OF THE E.O.
  6. CHAMFER ALL EXPOSED CAP EDGES 1/4\"
  7. THE TERRA COTTA SEALER SHALL CONFORM TO THE FEDERAL STANDARD COLOR I.D. NO. 30252.
  8. THE BUFF SEALER SHALL CONFORM TO THE FEDERAL STANDARD COLOR I.D. NO. 33711.
  9. CORNER ELEMENTS FOR THIS PROJECT SHALL HAVE A PLAIN SMOOTH FINISH. PANELS WILL BE CAST WITH NON-COLORED CONCRETE AND WILL NOT RECEIVE A SANDBLAST TREATMENT.

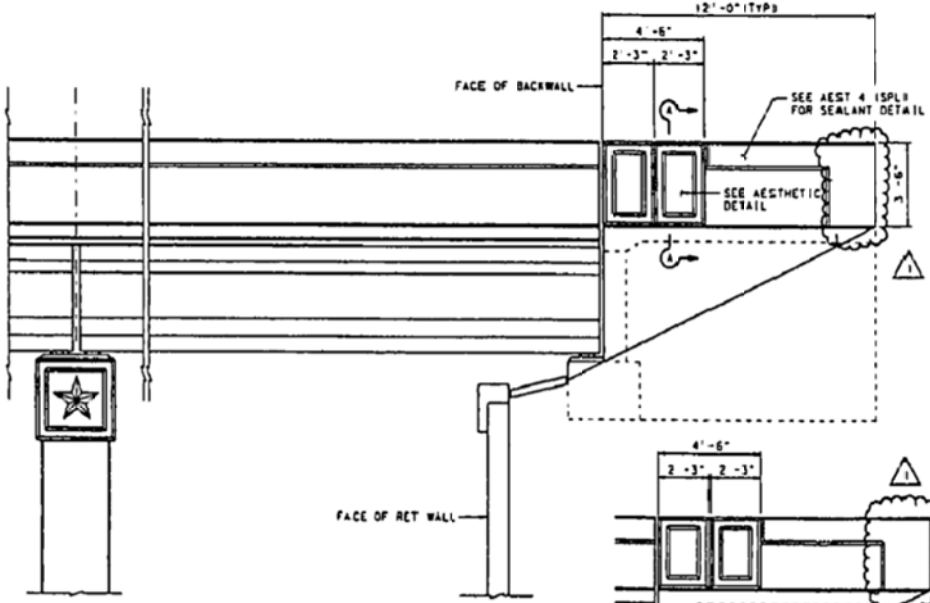




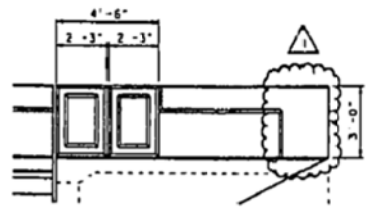
TYPICAL ABUTMENT  
SHOWING AESTHETIC OPTION



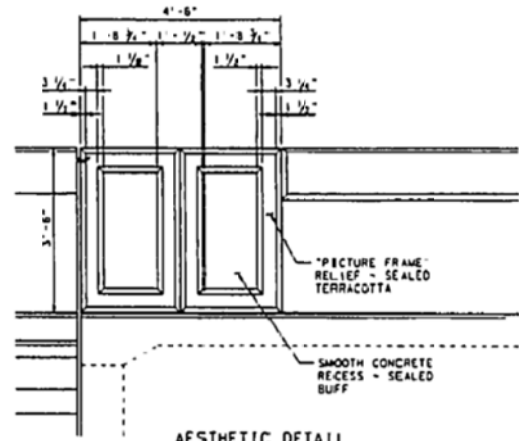
SECTION A-A  
42" SSTR SHOWN 136" SSTR SIMILARI



ABUTMENT ELEVATION  
42" SSTR SHOWN



36" SSTR RAIL OPTION



AESTHETIC DETAIL  
42" SSTR SHOWN 136" SSTR SIMILARI