



SH 99 Grand Parkway Segment B-1 Design-Build Project

Industry Workshop



January 16, 2025

Table of Contents

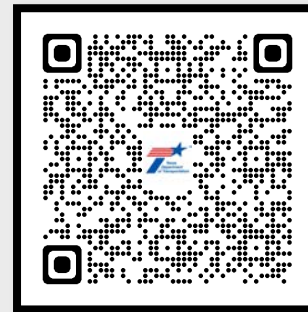
4	Project Overview
14	Project Risks and Challenges
25	Project Status
35	Project Procurement
47	DBE Requirements for Design-Build Projects

Pre-Procurement Partnering Process

- Early engagement of industry partners
 - Design-Build (DB) Project Planning Cadence document (see QR code)
 - Informal mentions of upcoming project to:
 - Associated General Contractors (AGC)
 - Design-Build Institute of America Southwest (DBIA-SW)
 - American Council of Engineering Companies (ACEC)
- TxDOT project pre-procurement website (see QR code)
 - Early sharing of reference information documents (RIDs)
 - Draft contract term sheets
 - Risk allocation
- Opportunity for feedback



DB Project Cadence

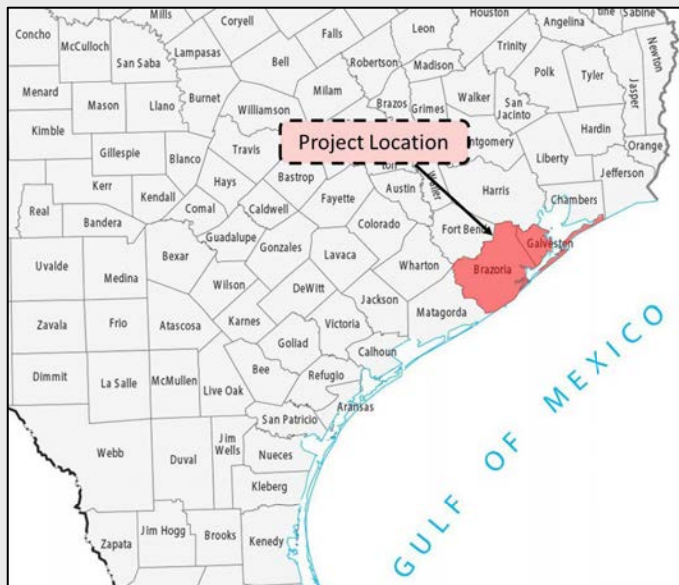


**SH 99 Seg B-1
Pre-Procurement Website**



Project Overview

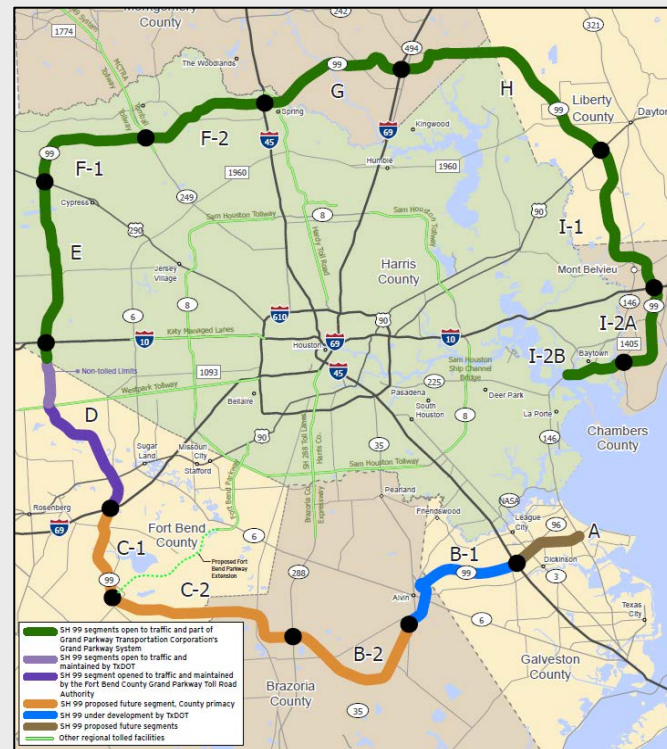
Corridor Location and Project Limits



Quick Facts

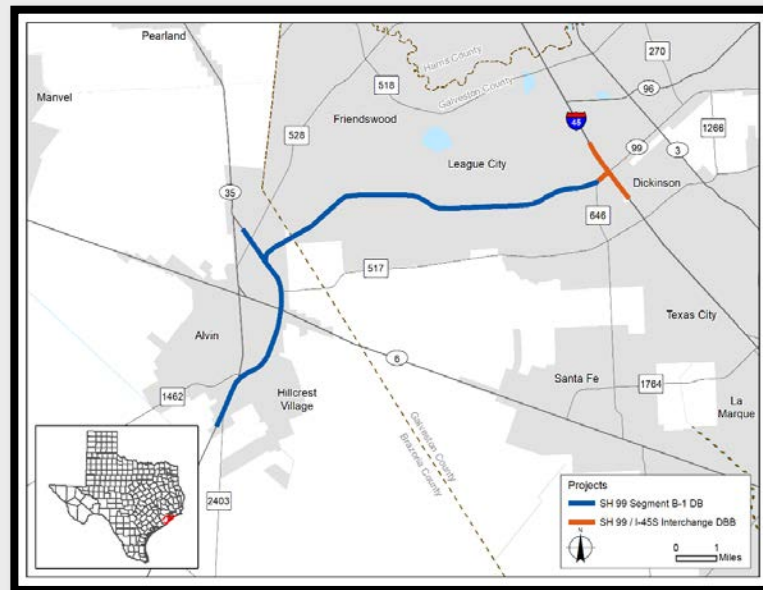
Segment B-1 Construction Limits: FM 646 to South of FM 2403

Project Locations: Galveston & Brazoria counties



Project Overview

- **Limits:** FM 646 to South of FM 2403
- **Length:** 14.0 miles
- **Project Details:**
 - Construct 4-lane tollway with discontinuous 2-lane frontage roads and interchanges
 - Construct two direct connectors at SH 35
 - Construct SH 35 mainlanes north of SH 99
 - Four direct connectors at I-45 interchange to be constructed by others
- **Estimated DB Cost:** \$1.94 Billion



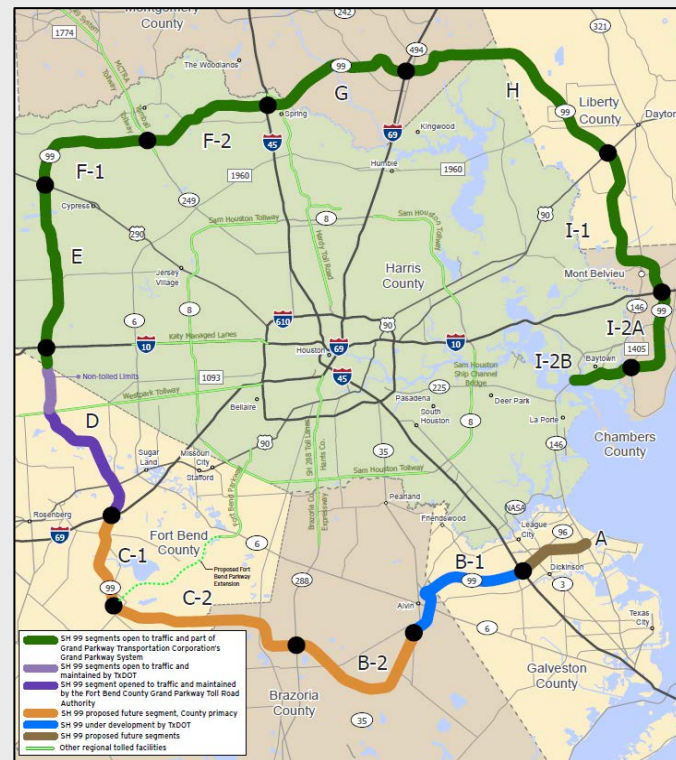
Needs and Purpose

• Project Needs

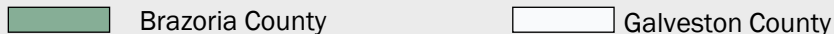
- Improve system linkage within the existing transportation system
- Address transportation demand in the area, reduce traffic congestion, and provide travel options
- Provide an alternative route to emergency evacuation routes for the greater Houston area
- Accommodate demographic and economic growth by improving the movement of persons and goods

• Project Purpose

- Efficiently link suburban communities and major roadways
- Enhance mobility
- Respond to economic growth
- Provide an additional access to establish hurricane evacuation routes



Project Overview



SH 99, FM 646 TO BRAZORIA CL

Galveston County.

Construct 4-lane tollway with discontinuous 2-lane frontage roads and interchanges

SH 99, GALV CL TO S OF FM 2403

Brazoria County

Construct 4-lane tollway with limited 2-lane frontage roads and interchanges

SH 99, AT SH 35

Brazoria County.

Construct 2 direct connectors (TOLL)

N GORDON ST TO STEELE RD

Brazoria County.

Construct 4 new mainlanes with overpasses at Wheeler Drive at FM 528 and reconstruct existing frontage roads.

N OF WHEELER DR TO S OF FM 2403

CSJ 0178-03-160

DESIGN - BUILD

Brazoria County.

Remove & replace existing JRCF pavement in kind, including guardrail, striping, etc.

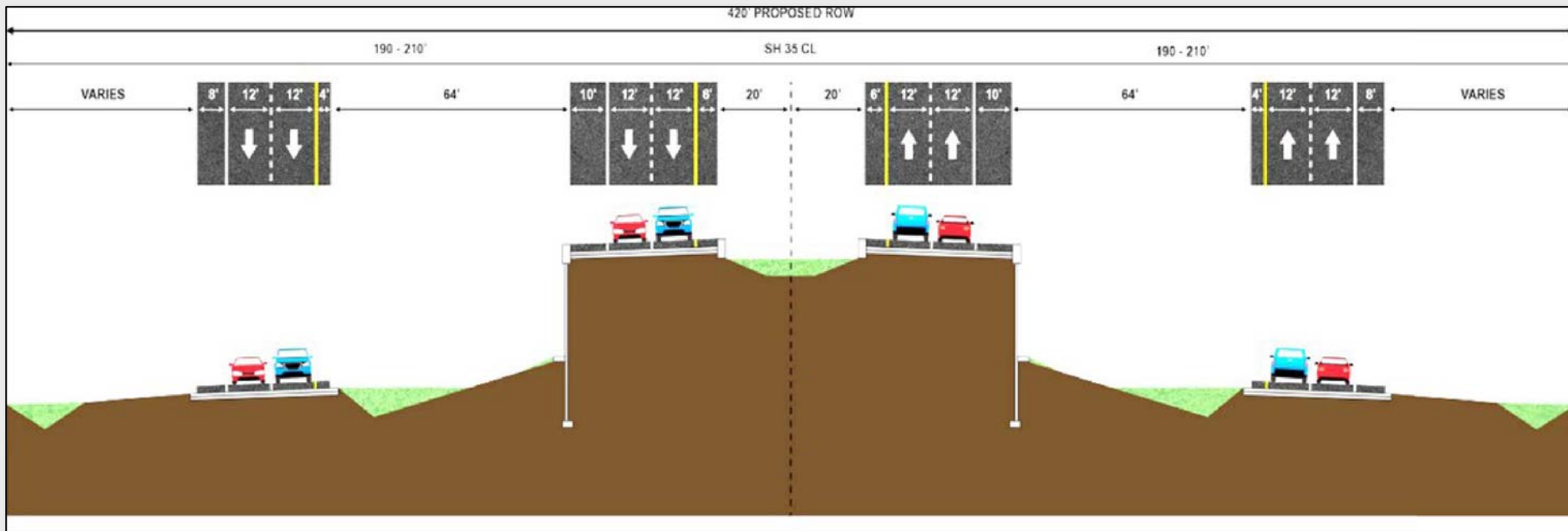
Project Objectives

- Completion that is on schedule, on budget, and of the highest degree of quality
- Improve mobility, accessibility, and increasing capacity to meet current and future travel demands
- Provide alternative evacuation routes for hurricanes and flooding
- Expand and sustain economic opportunities in the region by improving the mobility of persons and goods
- Facilitate participation of work by disadvantaged business enterprises, women-owned, and minority business enterprises

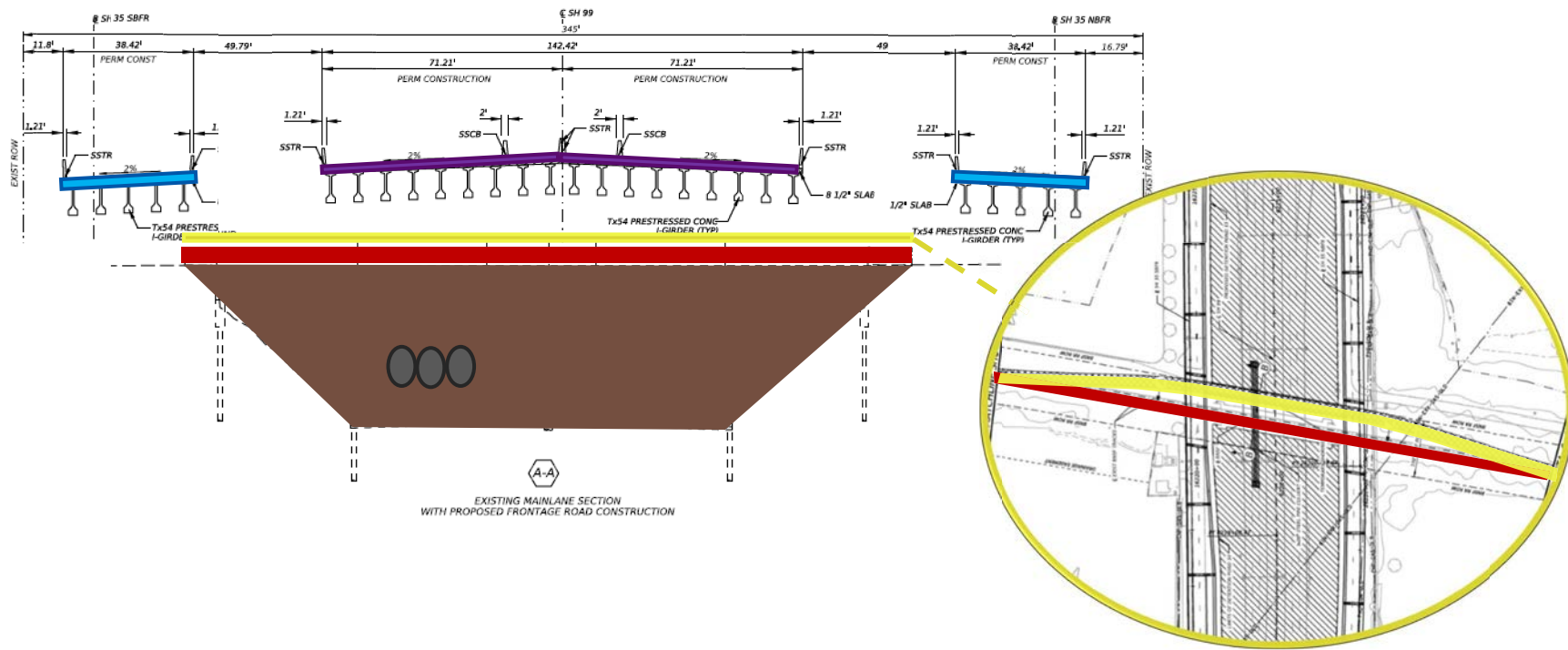
Project Objectives (continued)

- Minimize any negative impacts, contribution to air quality attainment goals
- Fulfilling the commitments made in the environmental evaluations and maximizing the use of recycled materials
- Minimize travel delays during construction and maintenance to ensure a safe evacuation route for hurricanes and flooding
- Maintain commitments to the public and stakeholders throughout Project delivery
- Coordinate with adjacent FM 517 and IH45 interchange DBB projects
- Minimize railway service disruption when working near the facility and when replacing existing railroad structures with at-grade tracks

SH 99 Grand Parkway Segment B-1 – Typical Section





SH 99 Grand Parkway Segment B-1 – BNSF Railroad



SH 99 Grand Parkway Segment B-1 – BNSF Railroad



-  Existing pump station
-  Proposed detention ponds

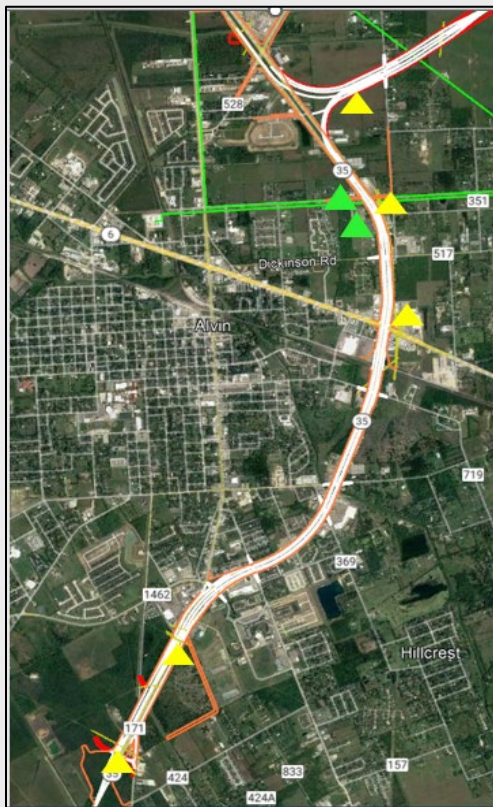


Project Risks and Challenges

Project Challenges

- **Utility relocations and impacts**
- **Construction phasing**
 - Mainlane and frontage road lane closures to accommodate DCs construction
 - Minimizing railway service disruptions during BNSF bridge replacement
- **Traveling impacts during construction**
 - Work zone management strategies
 - No two consecutive intersections closed for overhead activities simultaneously
 - Public information efforts and multi-jurisdictional coordination
 - Downtime of travel lanes during construction
- **Minimize impacts during construction to accommodate business owners' needs**
- **Multiple toll plaza layouts and equipment pads will be site specific**

Project Utility Risk Map for SH 35 Section



▲ Pipelines

▲ Electric Transmission – (2) Planned Advance Utility Relocations

Total Estimated Utility Conflicts:

456

Planned Advance Utility Relocations by TxDOT:

2

Total Number of Utility Owners:

26

Note:

- (i) Data date as of December 09, 2024; numbers subject to change as project develops.
- (ii) There are a total of 37 utility owners across all sections (SH35/Greenfield/IH45). Some utility owners exist across more than one section.

Project Utility Risk Map for Greenfield Section



- ▲ Pipelines – (33) Planned Advance Utility Relocations
- ▲ Electric Transmission – (3) Planned Advance Utility Relocations

Total Identified Utility Conflicts:	71
Planned Advance Utility Relocations by TxDOT:	36
Total Number of Utility Owners:	23

Note:

Data date as of December 9, 2024; numbers subject to change as project develops.

Project Utility Risk Map for I-45S Section



Total Identified Utility Conflicts: **159**

Total Number of Utility Owners: **12**

Note:

Data date as of December 9, 2024; numbers subject to change as project develops.

Potential HazMat Locations for Greenfield Section



Gas Station



Hazmat Site



Oil Well



Dry Hole



Plugged Oil/Gas Well

Within ROW:

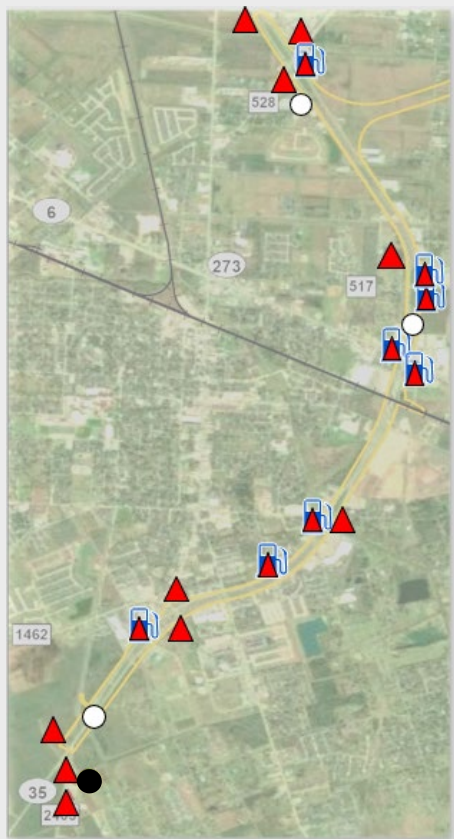
- 2 Hazmat Sites
- 1 Gas Station
- 2 Dry Holes
- 2 Plugged Oil/Gas Wells







Adjacent to Project:

- 1 Hazmat Sites
- 1 Gas Station
- 3 Dry Holes
- 4 Plugged Oil/Gas Wells
- 1 Oil Well

Note: Well data sourced from the Railroad Commission

Potential HazMat Locations for SH 35 Section



-  Gas Station
-  Hazmat Site
-  Oil Well
-  Dry Hole
-  Canceled Location
-  Plugged Oil/Gas Well

Adjacent to Project:

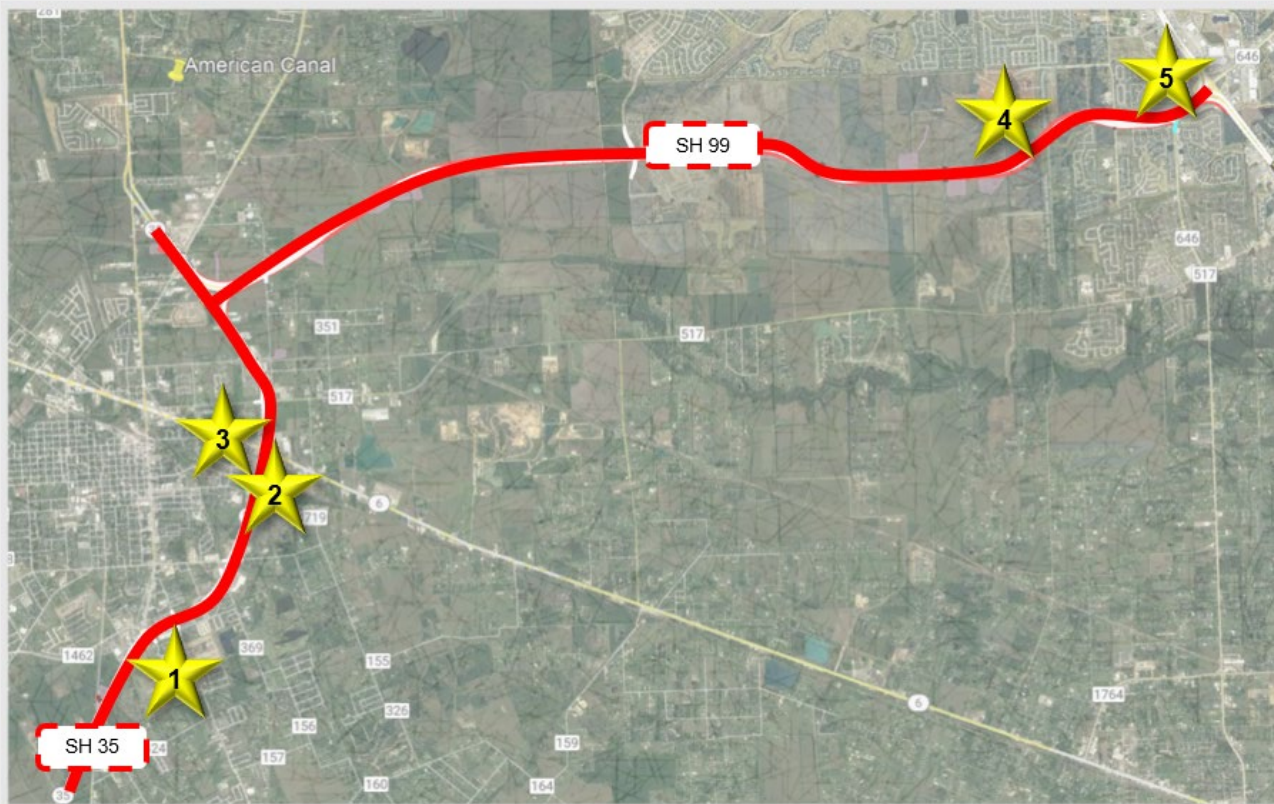
- 19 Hazmat Sites
- 8 Gas Stations
- 1 Dry Hole
- 1 Gas Well

Within ROW:

- 2 Dry Holes

Note: Well data sourced from the Railroad Commission

Major Third-Party/Stakeholders

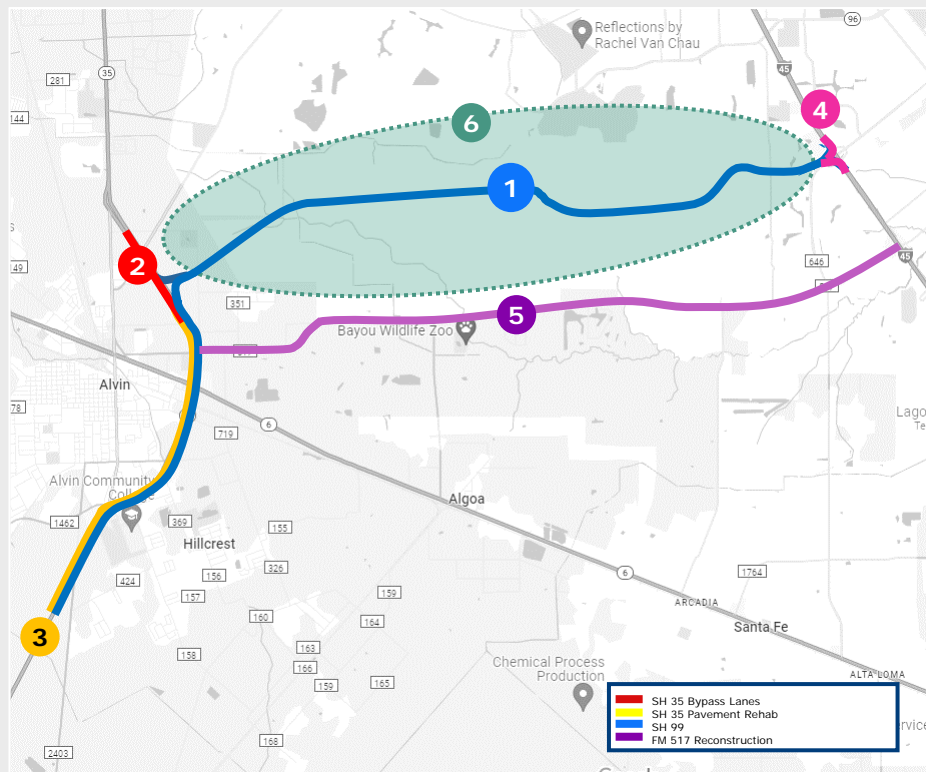


Major Third-Party/Stakeholders (major traffic generators and business access)

1. Alvin Community College
2. BNSF Railroad
3. SH 35 / SH 6 Retail Area
4. Lobit Elem & Middle Schools
5. I-45S / FM 646 Retail Area

1. Drainage Ditch 0.1M N of old FM 2403
2. Mustang Bayou
3. Unnamed Ditch
4. Tributary to Dickinson Bayou
5. Siphon Ditch
6. Dickinson Bayou
7. Galveston Canal (Private)
8. Drainage Ditch (Westland)
9. Unnamed Channel
10. Magnolia Bayou

Project & Adjacent Projects



1	SH 99 Segment B-1 From FM 646 to South of FM 2403	DESIGN - BUILD NTP1: 6/2026	
2	SH 35 Bypass Main Lanes From Victory LN to Steele RD	DESIGN - BUILD NTP1: 6/2026	
3	SH 35 Pavement Rehab From North of Wheeler Dr to South of FM 2403	DESIGN - BUILD NTP1: 6/2026	
4	CSJ 3510-01-003 SH 99, AT I-45S Construct 4 direct connectors	DESIGN BID BUILD LET Date: 12/2027	Adjacent Project
5	FM 517 Reconstruction From I-45 S to SH 35	DESIGN BID BUILD LET Date: 12/2027	Adjacent Project
6	Third Party Development Unknown timetable for private developer activities in the greenfield section		Adjacent Project

Current Signal Interconnect Project

Signal Interconnect Project = Tolling/ITS Redundancy

- Letting January 7, 2025
- From FM 528 northward
 - Will be “existing” within a few months
 - No particular B-1 conduits
- Along SH 6 : From I 45S to SH 288
 - Signal interconnect only from SH 35 to I 45S
 - Added two conduits from SH 35 to SH 288
 - Two conduits for B-1’s ITS and Tolling
 - Hub for B-1 tie in at SH 35 West side
- SH 6 : B-1 conduits are without fiber
- Fiber install to be coordinated with B-1 schedule

	CSJ 0178-02-094	SH 35, From CR 129 To FM 528
	CSJ 0192-02-062	SH 6, From SH 288 To BS 35C
	CSJ 0192-03-021	SH 6, From BS 35C To Galveston CL
	CSJ 0192-04-111	SH 6, From CL To IH 45S





Project Status

Project Status

Contract Delivery Method

Deliver as a DB project and will include up to a 15-year Capital Maintenance Contract (CMC) consisting of three five-year terms as solicited on recent TxDOT DB projects.

Project Cost Estimate

Anticipated Design-Build Contract (DBC) cost of approximately \$1.94B

Anticipated Design Exceptions

Approval for SH 99 Grand Parkway Segment B-1 exceptions anticipated by December 2025

- Vertical curvature of frontage roads over BNSF Railroad
- EB Calder entrance and future I-45 exit
- NB South St entrance and House Exit on FR.
- NB Dickinson entrance and FR exit
- NB exit to FM 517 distance from FR gore to signal
- SB entrance from Dickinson
- Braided ramp on SH 35

Project Status (continued)

Railroad

- **Coordination:** TxDOT continues coordinating with BNSF
- **Exhibits:** Several exhibits (A, B, D) related to the project have been submitted to and approved by BNSF in October 2024
- **Applications:** TxDOT submitted an application for pipeline/wire line crossings in October 2024
- **Agreements:** TxDOT is preparing a final Construction and Maintenance (C&M) Agreement for BNSF's approval, expected to be completed by Summer 2025
- **Responsibilities:** After contract execution, the DB Contractor will prepare necessary documents for TxDOT to obtain the executed C&M Agreement; TxDOT will continue coordinating with BNSF to finalize this agreement

Geotechnical

- TxDOT has completed geotechnical investigations and prepared geotechnical and pavement design reports
- A final Pavement Design Report and a Geotechnical Investigation Report was completed in December 2024

Drainage

- Final Drainage Report, H&H models, and design files are anticipated to be complete in February 2025

Project Status (continued)

Environmental Clearance

- **Final Environmental Impact Statement (FEIS)** was approved on May 25, 2016
- **Record of Decision (ROD)** was issued on November 30, 2016
- **Categorical Exclusion** for the SH 35 Bypass portion of the project was approved in December 2024
- TxDOT is conducting a **limited environmental re-evaluation** anticipated to be approved March 2025
- TxDOT will prepare and obtain the **U.S. Army Corps of Engineers (USACE) 404 Standard Permit** for the project
- Final **USACE 404 Standard Permit** is anticipated to be obtained Spring 2026
- **Hazardous Materials investigations** completed October 2024
- **Public Meeting** was held on Oct. 12, 2023. Information can be found at the link and QR code:

www.txdot.gov/projects/hearings-meetings/houston/2023/sh99-sh35-101023.html



Project Status (continued)

Utilities

Subsurface Utility Engineering (SUE) / Utility Conflict Matrix (UCM):

- TxDOT is collecting utility information and analyzing conflicts
- Available Level A and B SUE information as of November 2024 is in the RIDs
- Draft UCM and Utility Strip Map are provided, with updates expected by February 2025
- Subsurface Utility Engineering (SUE) investigations (Draft October 2024 / Final February 2025)

Advance Utility Relocations (TxDOT-Responsibility):

- Notification letters sent to all Advance Utility Relocation owners, who are now engaged in the agreement process
- Advance utility relocation dates will be included in the draft RFP, with completion by the adjustment completion dates in the RFP
- List of utility owners and conflicts provided, totaling 38 conflicts

Project Status (continued)

Utilities

Utility Relocations (DB Contractor Responsibility):

- TxDOT has not started coordination on conceptual utility designs beyond Advance Utility Relocations
- Utility kick-off meetings held with the City of Alvin and the City of League City
- Relevant files and schedules will be uploaded to the RIDs during the RFP phase
- DB Contractor must maintain access for Utility Owners and handle any necessary easements outside the Schematic ROW
- DB Contractor is responsible for relocating new utilities impacting the project and addressing unidentified private utilities as per the DBA General Conditions

Project Status (continued)

Utilities

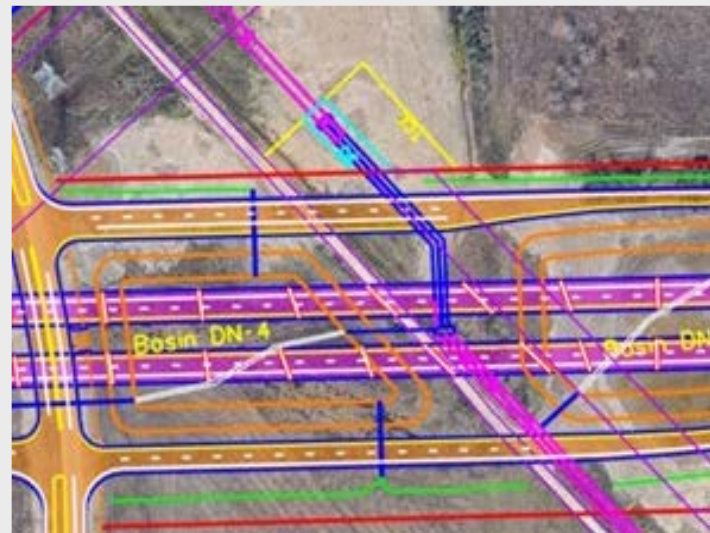
- **Interlocal Agreements** – TBD
- **Advance Utility Agreements**
 - Air Liquide Large Indust U.S. LP
 - Air Products LLC
 - Buckeye Dev. & Logistics I LLC
 - CenterPoint Energy Electric Transmission
 - Chevron Pipeline Company
 - Denbury Green Pipeline-Texas LLC
 - DOW Pipeline Company
 - Energy Transfer
 - Enterprise Products Operating LLC
 - Equistar Chemicals, LP
 - ExxonMobil Pipeline Company
 - Kinder Morgan Texas Pipeline LLC
 - Phillips66 Pipeline LLC
 - Shell Pipeline
 - Texas New Mexico Power Electric Transmission

Project Status (continued)

Third Party Agreements



**Gulf Coast Water Authority
Canal Crossing**



**Maple Leaf Drainage with City of
League City, MUD and Galveston County
Consolidated Drainage District (GCCDD)**

Project Status (continued)



Right of Way Mapping

- Preliminary ROW maps were completed April 2024
- ROW maps will be available to shortlisted proposers in April 2025



Right of Way Acquisition

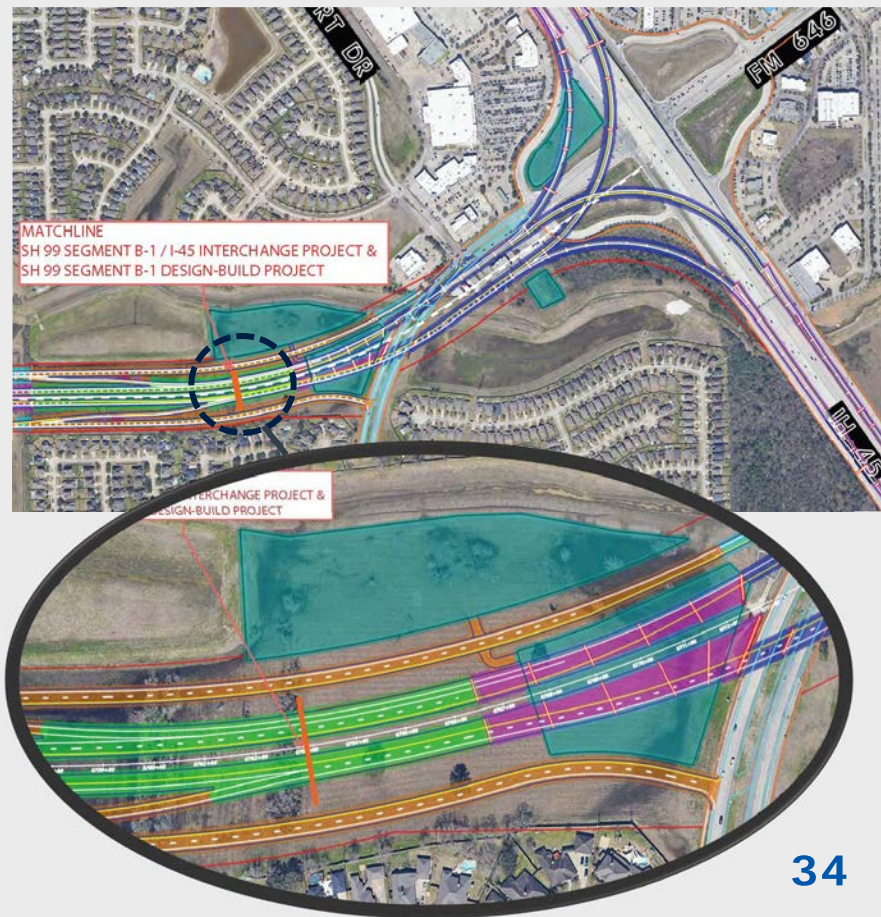
- 55 fee parcels; 11 easements; 12 temp construction easements (TCEs)*
- All schematic parcels will be acquired by TxDOT
- 3 parcels w/ relocation near the SH 35 Bypass
 - Bub's Sports Grill
 - Samra Warehouse
 - Residence on Clifford St. (vacated)
- 32 initial offers made*
- 32 appraisals complete; 13 appraisals in progress*

* data as of December 21, 2024

Project Status Summary

Schematic Design:

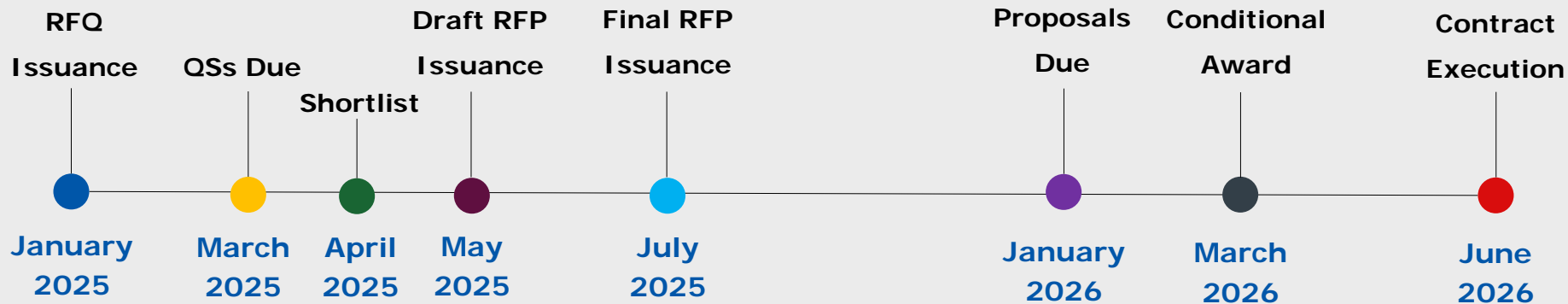
- 90% schematic design was completed in October 2024 and is provided in the RIDs.
- A 90% signing schematic associated with the 90% schematic design was completed in October 2024 and is provided in the RIDs.
- The final schematic design and associated signing schematic is anticipated to be complete in March 2025 following NEPA approval.
- The current posted 90% schematic design depicts the full SH 99 Segment B-1 project limits per the NEPA environmental document, however, the DB Project's limits will not include the I-45 south interchange. The proposed DB Project's scope ITS/tolling conduit will be constructed through the interchange to the hub at I-45 south.





Project Procurement

Timeline



DB Procurement Process



Two step procurement process

- **RFQ**
 - RFQ questions due January 27, 2025*
 - QS due on March 13, 2025*
- **RFP**
 - Shortlist on April 24, 2025
 - Issue DRFP in early May 2025*

QS Evaluations

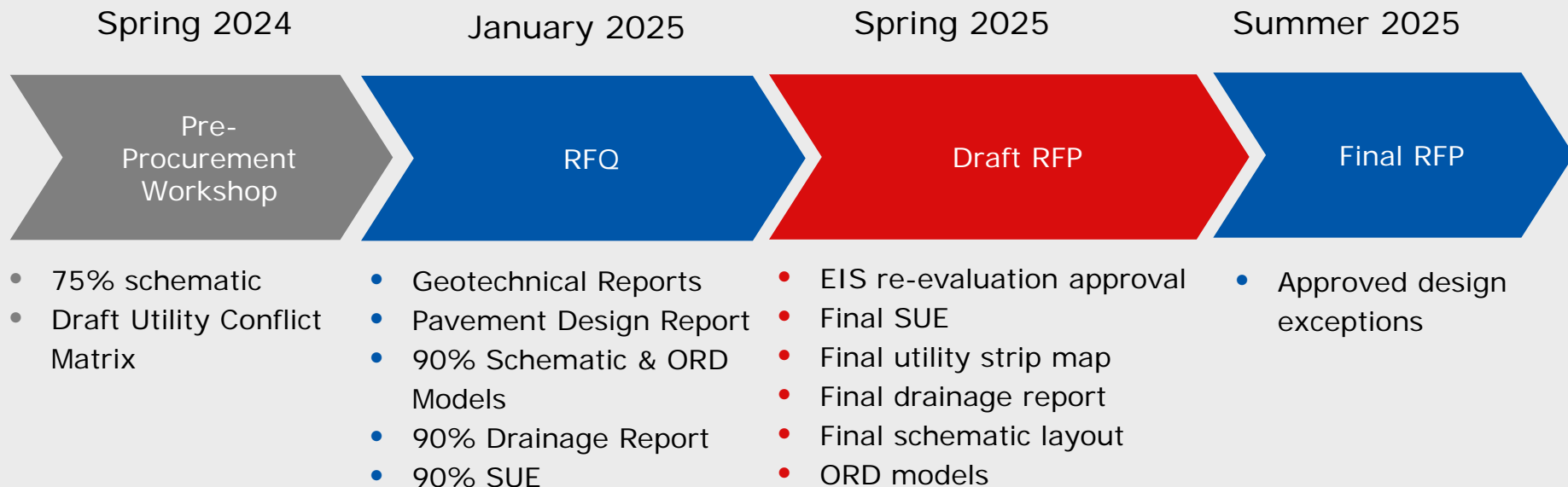
How the QS's will be evaluated:

- Project Qualifications and Experience
- Statement of Technical Approach
- Safety Qualifications

*All projected dates subject to change

Reference Information Documents (RIDs) Schedule

SH 99 Grand Parkway Segment B-1 Design-Build Project*



RFQ Qualifications Evaluation



Project Qualifications and Experience		65% weighting
Experience with designing comparable projects		9 points
Experience with constructing comparable projects		9 points
Experience with independent quality assurance on comparable projects		8 points
Strength of the proposed organization and management structure		5 points
DBE Outreach and Involvement		5 points
Experience of the Key Personnel for the Project		29 points
	Project Manager	5 points
	Construction Manager	4 points
	Design Manager	3 points
	Lead Maintenance of Traffic ("MOT") Design Engineer	2 points
	IQF Manager	3 points
	Professional Services Quality Assurance Manager	2 points
	Construction Quality Control Manager	3 points
	Utility Manager	2 points
	Environmental Compliance Manager	3 points
	Lead MOT Implementation Manager	2 points

Qualification Statement Evaluations

Statement of Technical Approach	25% Weighting
Demonstrate a full understanding of the Project's scope and complexity	9 points
Demonstrate a complete understanding of Project risks and potential solutions that may arise during all Project phases	7 points
Ability to plan, organize, and execute an independent quality assurance program with sufficient personnel to meet project requirements	6 points
Ability to secure and integrate local and non-local DBEs for a complex project, including solutions to related challenges	3 points
Safety Qualifications	10% Weighting
Fatal injury rate ("FIR") per 100,000 full-time workers	2.5 points
Incidence rate ("IR") of injury and illness cases per 100 full-time workers	2.5 points
National Council on Compensation Insurance ("NCCI") experience modifier	2.5 points
Demonstrates the Proposer's safety culture and experience with safety programs on similar projects	2.5 points

Split Funding



The Project (excluding the SH 35 Bypass portion) will be the responsibility of the Grand Parkway Transportation Corporation (GPTC)

- The GPTC will make payments for the DBC and CMC either through reimbursement of TxDOT or through direct payment from GPTC bank trustee after the assignment of the Design-Build Contract (DBC) and Capital Maintenance Contract (CMC) to GPTC
- IF a USDOT TIFIA loan is granted, TIFIA provisions and approvals will apply to the DBC and CMC contracts.



SH 35 Bypass will be priced separately under the DBC and CMC.

- The SH 35 Bypass portion of the Project will be funded using Category 2, 3, 4, and 11.
- Monthly Draw Requests will be submitted separately for the SH 35 Bypass Work.




The Project is fully funded with the 2025 Unified Transportation Program approved by the Texas Transportation Commission in August 2024.

Financial / Bonding General Requirements


- Financial capability to carry out Project responsibilities is a Pass/Fail requirement of the Qualifications Statement (QS) evaluations
- While having a specific tangible net worth is no longer part of Pass/Fail criteria, TxDOT will review a Proposer's tangible net worth in the context of the review of the Proposer's financial capability
- Each QS shall require evidence Proposer can obtain Payment & Performance Bonds each totaling **\$1.94 billion**
 - Form letter located in RFQ, Exhibit E
 - Bonds will secure DB Contractor's obligations for entire Project

Proposer Responsibilities

 Proposers are responsible for monitoring the Project Webpage for information:



<https://www.txdot.gov/business/road-bridge-maintenance/alternative-delivery/sh99-grand-parkway-segb1.html>

 TxDOT has posted the RFQ and will post any associated addenda on the Project Webpage.

Correspondence may be submitted via e-mail to:

TXDOT-HOU-ALD-SH99SEGB1@TXDOT.GOV

 The deadline for questions is **January 27, 2025, at 12:00 noon**

Proposer Responsibilities



TxDOT issued an RFQ on **January 3, 2025**, with an anticipated Qualifications Statement (QS) due date of **March 13, 2025**.

- ✖ No physical copies of the QS will be accepted.
- ✖ **No later than one week prior to the QS Due Date**, each Proposer that intends to submit a QS must send an email to the project email address identifying the Proposer team name and the name and email address of no more than two individuals designated by Proposer to access TxDOT's Electronic Content Management System.
- ✖ QSs not received prior to such time on the QS Due Date will not be considered by TxDOT for evaluation or shortlisting.

Organizational Conflicts of Interest

- Firms that are providing preliminary engineering or architectural services for the Project or have provided such services will be prohibited unless TxDOT has issued a written determination that all work product prepared by the firm and other information and data provided to the firm in the performance of the services has been or will be made available to all Proposers prior to the issuance of the final RFP
- Firms that are providing or have provided environmental services for the Project will be prohibited unless TxDOT has issued a written determination that the firm is not prohibited.
- Firms that are providing procurement services will be prohibited from proposing or joining a Proposer team



THANK YOU FOR ATTENDING

PLEASE PROVIDE COMMENTS & FEEDBACK FOR THE
SH 99 GRAND PARKWAY SEGMENT B-1 DESIGN-BUILD PROJECT
VIA THE PROJECT EMAIL:

TXDOT-HOU-ALD-SH99SEGB1@TXDOT.GOV



SH 99 Grand Parkway Segment B-1 Design-Build Project (Houston District)

January 16, 2025

Presented by:

Katrena Wynn-Plummer and Carlton Cooper

Civil Rights Division | Business and Community Engagement Team

Civil Rights Division

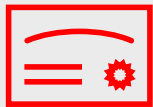
The Civil Rights Division promotes opportunities within TxDOT's programs and operations related to equal opportunity and non-discrimination.

With 50 employees spanning across the state, the **Civil Rights Division focuses on four areas:**

- Nondiscrimination (Title VI, EEO)
- Accessibility (ADA)
- Small Business Development (DBE, HUB, SBE)
- Workforce Development (OJT CU2J, CCP, TCCA)



Business and Community Engagement Team



Certification Support Services

- Disadvantaged Business Enterprise **(DBE)**
- Airport Concessions Disadvantaged Business Enterprise **(ACDBE)**
- Historically Underutilized Business **(HUB)**
- Small Business Enterprise **(SBE)**



TxDOT Hosted Trainings

- Year-round trainings (virtual and in-person)
- Educational opportunities
- Networking with TxDOT purchasers, other small businesses, state agencies, universities, and local entities



BOSS Guide (downloadable)

- Multi-page booklet
- Provides helpful tips on navigating the agency's procurement process and other support to facilitate your firm's development

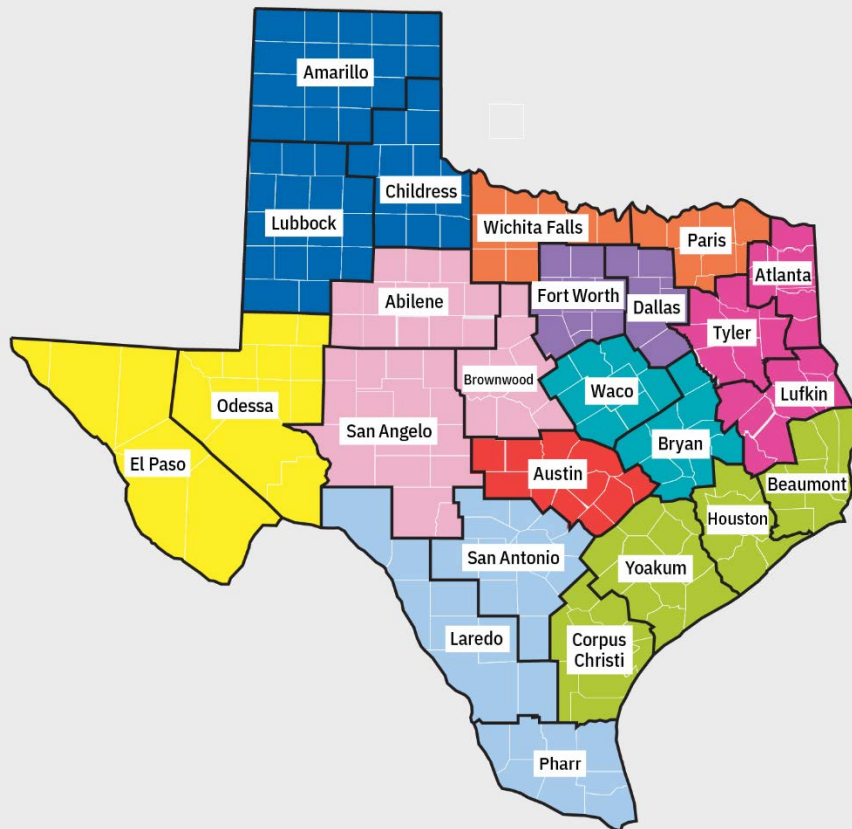


1x1 Consultations

- Team of eight Outreach and Public Involvement Specialists
- Connect you to multiple departments within the division.
- Available to discuss challenges, goals, and doing business with TxDOT staff.

BCE Team Outreach Assignments

- District 1 | Paris
- District 2 | Fort Worth
- District 3 | Wichita Falls
- District 4 | Amarillo
- District 5 | Lubbock
- District 6 | Odessa
- District 7 | San Angelo
- District 8 | Abilene
- District 9 | Waco
- District 10 | Tyler
- District 11 | Lufkin
- District 12 | Houston
- District 13 | Yoakum
- District 14 | Austin
- District 15 | San Antonio
- District 16 | Corpus Christi
- District 17 | Bryan
- District 18 | Dallas
- District 19 | Atlanta
- District 20 | Beaumont
- District 21 | Pharr
- District 22 | Laredo
- District 23 | Brownwood
- District 24 | El Paso
- District 25 | Childress



	Allison Hinojosa Email: Allison.Dupler@txdot.gov Phone: 512-806-6664 Austin
	Araceli Rodriguez Email: Araceli.Ann.Rodriguez@txdot.gov Phone: 210-429-6053 Laredo, Pharr, San Antonio
	Brenda Ugarte Email: Brenda.Ugarte@txdot.gov Phone: 737-330-4756 El Paso, Odessa
	Jemillatu Lewally Email: Jemillatu.lewally@txdot.gov Phone: 512-839-0478 Paris, Wichita Falls, Dallas, Fort Worth
	Katrena Plummer Email: Katrena.Plummer@txdot.gov Phone: 512-774-8468 Houston, Corpus Christi, Beaumont, Yoakum
	Kim Hunziker Email: Kim.Hunziker@txdot.gov Phone: 512-486-5077 Amarillo, Lubbock, Childress
	Lauryn Ott Email: Lauryn.Ott@txdot.gov Phone: 512-502-2727 Abilene, Brownwood, San Angelo, (Austin)
	Araceli Rodriguez Email: Araceli.Ann.Rodriguez@txdot.gov Phone: 210-429-6053 Bryan, Waco, (Austin)
	Noraima (Nora) Perez Email: Noraima.Perez@txdot.gov Phone: 214-319-6456 Dallas, Fort Worth
	Sara Heath Email: Sara.Heath@txdot.gov Phone: 903-310-8509 Atlanta, Lufkin, Tyler
	Carlton Cooper Email: Carlton.Cooper@txdot.gov Phone: 512-289-2806 Texas at-large

FROM THE GOVERNOR

“ Veteran, minority and women-owned small businesses in Texas have a major impact on the state’s economy. Texas is home to some of the top cities for Hispanic and minority entrepreneurs, and we have frequently been named one of the best states for Black entrepreneurship. In addition, Texas is #1 for jobs created by Black business owners, Black women business owners, Hispanic women business owners and veteran business owners. ”



Source:

<https://gov.texas.gov/business/page/veteran-minority-women-resources>

What does TxDOT Purchase?

Purchases are made to support various TxDOT functions:

- Highway construction and maintenance including roadway materials and traffic control and safety items—**Construction, Maintenance, and Support Services Divisions and the Districts**
- Professional services, such as architects, engineers, surveyors—**Professional Engineering Procurement Services Division**
- Facility construction and maintenance—**Support Services Division and Procurement Division**
- General commodities and services—**Procurement Division**
- Automated information systems goods and services—**Procurement Division**

Each division in green above makes purchases under different legislation.

Statewide Lettings

The official receipt and opening of bids and determination of the apparent low bidder.

- Contract lettings are held in Austin at the TxDOT Stassney HQ on **two consecutive days each month**. (virtual) Subscribe for letting updates for contract and bidding.
- Invitation for Bids are posted on both the Electronic State Business Daily and TxDOT.gov.



Contractor Prequalification

☐ Confidential Questionnaire

- Bidders must provide an audited financial statement prepared by an independent CPA firm.

☐ Bidders Questionnaire

- This level of qualification is for bidding on projects for which the full requirements outlined above are waived—normally smaller construction, routine maintenance, emergency, and specialty projects.

☐ Material Supplier

- This level of qualification is for suppliers bidding on material and traffic control and safety device projects, which is limited to the purchase and delivery of materials used on roadways for in house state force work only.

PEPS Industry Businesses | How Do I Get Started?

- ❑ Be registered as a business with the State of Texas
<https://comptroller.texas.gov>
<https://www.sos.state.tx.us>
- ❑ Be registered with the Texas PE/LS Board or the Texas Board of Architectural Examiners
<https://pels.texas.gov/>
<https://www.tbae.texas.gov>
- ❑ Obtain precertification with TxDOT
<https://www.txdot.gov/business/consultants/architectural-engineering-surveying/getting-started/precertification.html>
- ❑ Become administratively qualified with TxDOT
<https://www.txdot.gov/business/consultants/architectural-engineering-surveying/getting-started/administrative-qualification.html>



DRIVE Program Update – December 2024

- DRIVE Program launched in April 2021
- Inaugural class of sixteen firms selected in July 2021
- The inaugural class graduated at an event in Austin in August 2023
- The second-year class of twenty-six firms was selected in July 2022
- The third-year class selected in July 2023, has a total of 22 firms
- **Applications will reopen January 2025.**

Connect with the BCE Team

CIV_Outreach@txdot.gov | www.txdot.gov | (512) 416-4700

Scan the QR Code to
View the BOSS Guide



Scan the QR Code to
View TxDOT Programs





Questions and Open Discussion

Katrena Wynn-Plummer
Katrena.plummer@txdot.gov
512-774-8468

Carlton Cooper
Carlton.Cooper@txdot.gov
512-289-2806



DBE Program Requirements on Design Build Projects

January 16, 2025

Presented by:
Daniel Williams

Civil Rights Division | DBE Compliance Team

DBE Program Overview

TxDOT has established a Disadvantage Business Enterprise (DBE) Program in accordance with regulations of the United States Department of Transportation (USDOT).

- Legislatively mandated by Congress and administered by the United States Department of Transportation (USDOT).
- Administered by USDOT's three modal administrations:
 - Federal Highway Administration (FHWA)
 - Federal Transit Administration (FTA)
 - Federal Aviation Administration (FAA)
- Implementation guided by 49 CFR, Part 26

DBE Program Overview

TxDOT is:

- A recipient of federal funds.
- Responsible for administering its DBE Program.
- Legally accountable for expenditures of USDOT financial assistance.
- TxDOT assures it will comply with 49 CFR, Part 26 within its DBE Program Plan.
- Breach could result in loss of federal funds.

What is a DBE

- A for-profit, small business concern where socially and economically disadvantaged individuals own at least a fifty-one percent interest and also control management and daily business operations.
- Socially and economically disadvantaged as defined by 49 CFR Part 26.67(a)
- All DBEs are small businesses, but not all small businesses are DBEs.

What is not a DBE

- Historically Underutilized Business (HUB)
- Small Business Enterprise (SBE)
- Minority Business Enterprise (MBE)
- Veteran-Owned Business Enterprise (VBE)
- African-American Business Enterprise (AABE)
- Woman Owned Business (WBE)
- Hispanic-American Business Enterprise (HABE)
- Disabled Individual Business Enterprise (DIBE)
- Native American Business Enterprise (NABE)

These certifications are different than the DBE certification required for meeting DBE goals on federally assisted contracts!

DBE Contract Goals

- TxDOT has set the project-specific DBE goals for this project; 14% for Construction and 14% for Professional Services.
- The prime contractor is obligated to make good faith efforts to meet the DBE contract goal, by:
 - obtaining enough DBE participation to meet the goal.
 - documenting evidence of good faith efforts when the contract goal is not met.

DBE Contract Goals

- The project operates pursuant to a “design-build” contract.
- The design-build contractor will submit a DBE Performance Plan with the Proposal.
- The design-build contractor will solicit DBE commitments throughout the project in accordance with the DBE Performance Plan.



Questions and Open Discussion

Daniel Williams

Daniel.williams@txdot.gov

512-416-4749

Civil Rights Division

CIV_Compliance@txdot.gov

512-416-4700