



I-35 Northeast Expansion (NEX) South Project

Pre-Procurement Industry Workshop

February 14, 2022



- Video options will be turned off
- Chat capabilities will be turned off
- Attendees will be automatically muted
- All comments and feedback can be sent to project mailbox after the conclusion of the presentation



Safety: Mission

ZERO

#EndTheStreakTX



Safety Never Stops!



TEXAS DEPARTMENT OF TRANSPORTATION

ENDING THE STREAK IS IN OUR HANDS



Most crashes and fatalities are due to drunk driving, distracted driving or failure to use seat belts. In other words, they're preventable.

Here's what we can do:

- **Buckle up:** Seat belts are our first line of defense.
- **Drive the speed limit**, or slower, depending on road or weather conditions.
- Never drive under the influence of alcohol or drugs. **Plan a sober ride home.**
- When driving, **put the phone away** or set to "Do Not Disturb".

Let's "End The Streak" together!

Show your support for safer driving in Texas by reminding your fellow drivers of our shared responsibility.





1	Pre-Procurement Partnering Process	6 – 7
2	I-35 NEX Project – Corridor Summary	8 – 13
3	I-35 NEX South DB Project – Overview	14 – 20
4	I-35 NEX South DB Project – Status	21 – 24
5	I-35 NEX South DBB Project – Status	25 – 26

PRE-PROCUREMENT PARTNERING PROCESS



- Early engagement of industry partners
 - Received industry feedback for a single design-build (DB) project
 - Received industry feedback for one or more design-bid-build (DBB) projects
- TxDOT project pre-procurement website
 - Early sharing of reference information documents (RIDs)
 - Draft contract term sheets
 - Risk allocation
- Opportunity for feedback

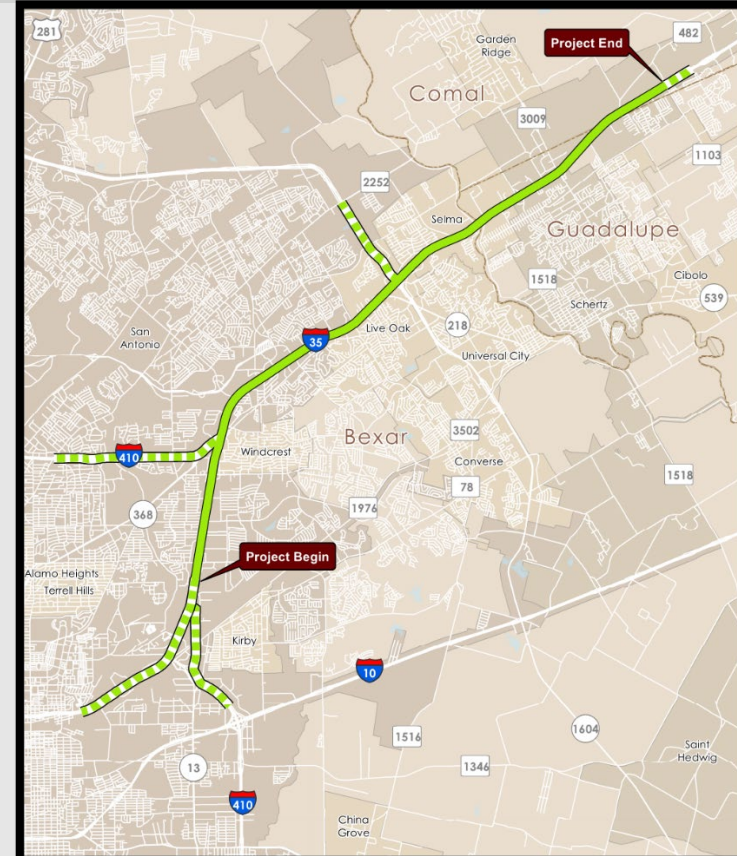
I-35 NEX PROJECT – CORRIDOR SUMMARY

I-35 NEX Project – Corridor Location and Limits



Quick Facts

- **I-35 NEX Full Project Length:** 15.4 Miles
- **I-35 NEX Full Construction Limits:** I-410 S to FM 1103
- **Project Locations:** Bexar, Guadalupe, & Comal Counties



I-35 NEX Project – Needs and Purpose

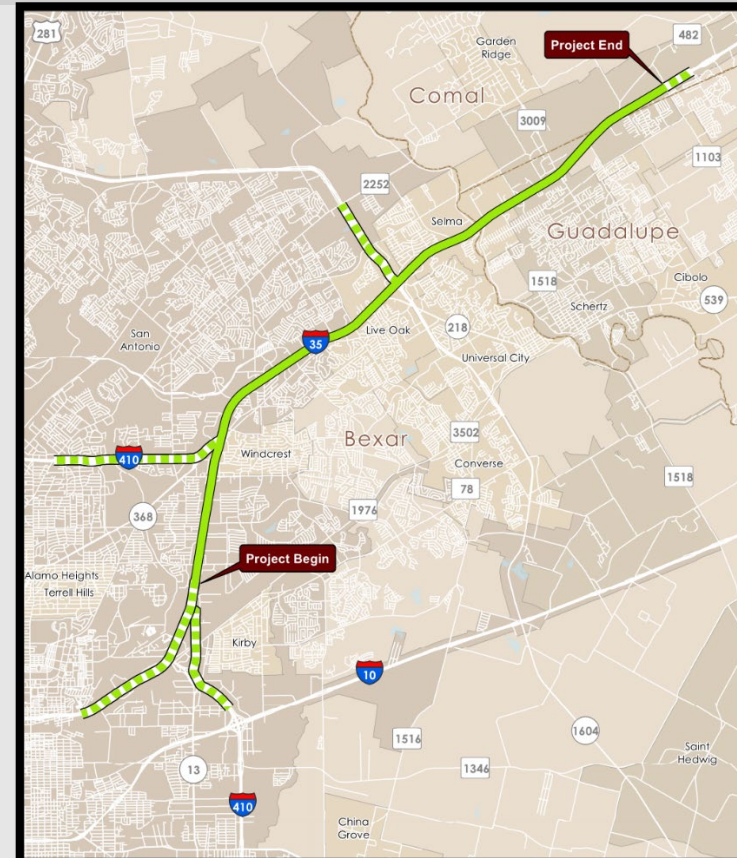


■ Project needs

- Increasing traffic demand
- Increasing congestion
- Inadequate roadway capacity
- Limited integration of I-35 with other existing and planned transportation modes

■ Project purpose

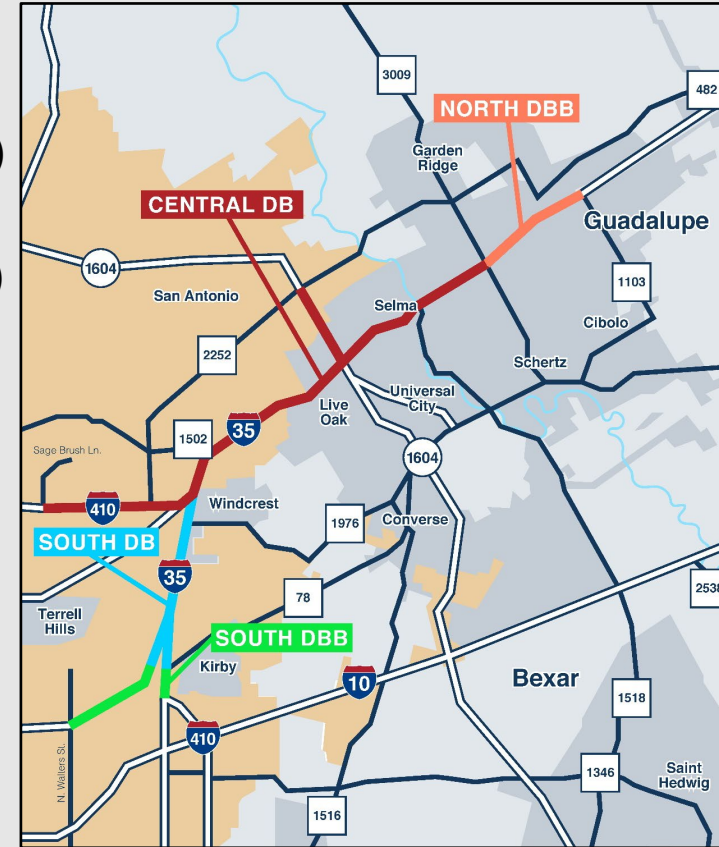
- Improve mobility
- Manage vehicle congestion
- Promote efficient use of existing transportation facilities
- Minimize impacts to the natural and built environment
- Complement other modes of transportation and economic development initiatives



I-35 NEX Project – Full Project Overview

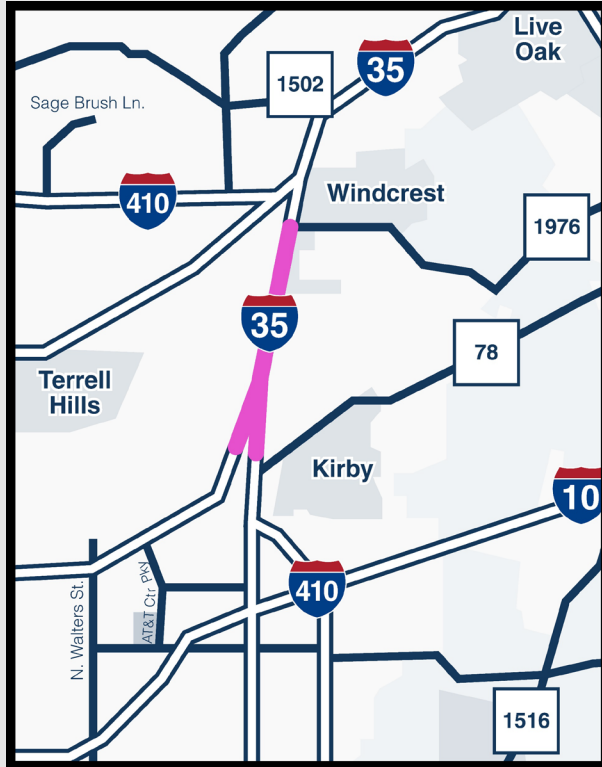


- The project will be split into four components:
 - NEX North DBB (CSJs 0016-05-111, 0016-06-115)
 - FM 1103 to FM 3009
 - NEX Central DB (CSJs 0016-06-047, 0016-07-113)
 - FM 3009 to I-410N
 - NEX South DB (CSJ 0017-10-168)
 - I-35: I-410N to Petroleum Drive
 - I-410S: I-35 to 0.3mi N of Seguin Ave
 - NEX South DBB (CSJ 0521-06-xxx, 0017-10-xxx)
 - I-35: Petroleum Drive to N. Walters St.
 - I-410S: 0.3mi N of Seguin Ave to Interstate Drive



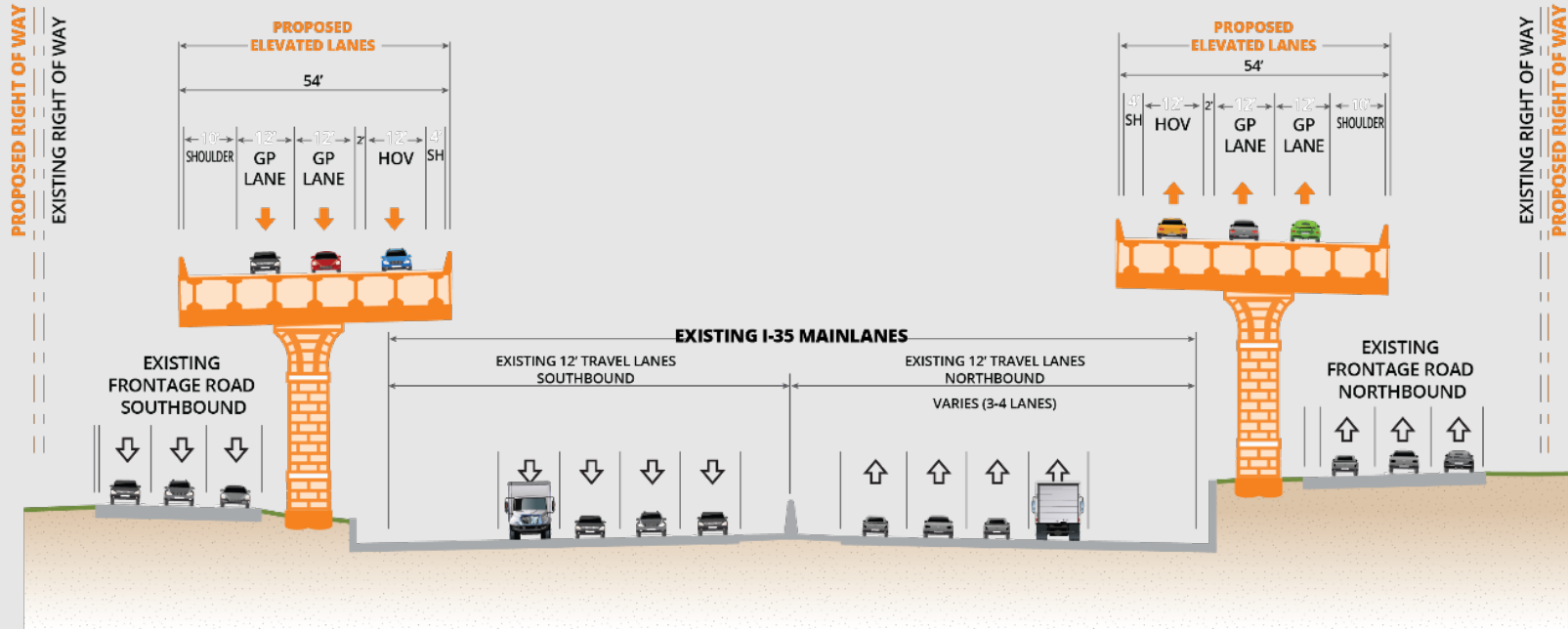


I-35 NEX SOUTH DB PROJECT – OVERVIEW



- **Major Elements**
 - Added capacity elevated lanes
- **Elevated Lanes**
 - Provide connectivity to/from I-35 and I-410 South at the south end of the project

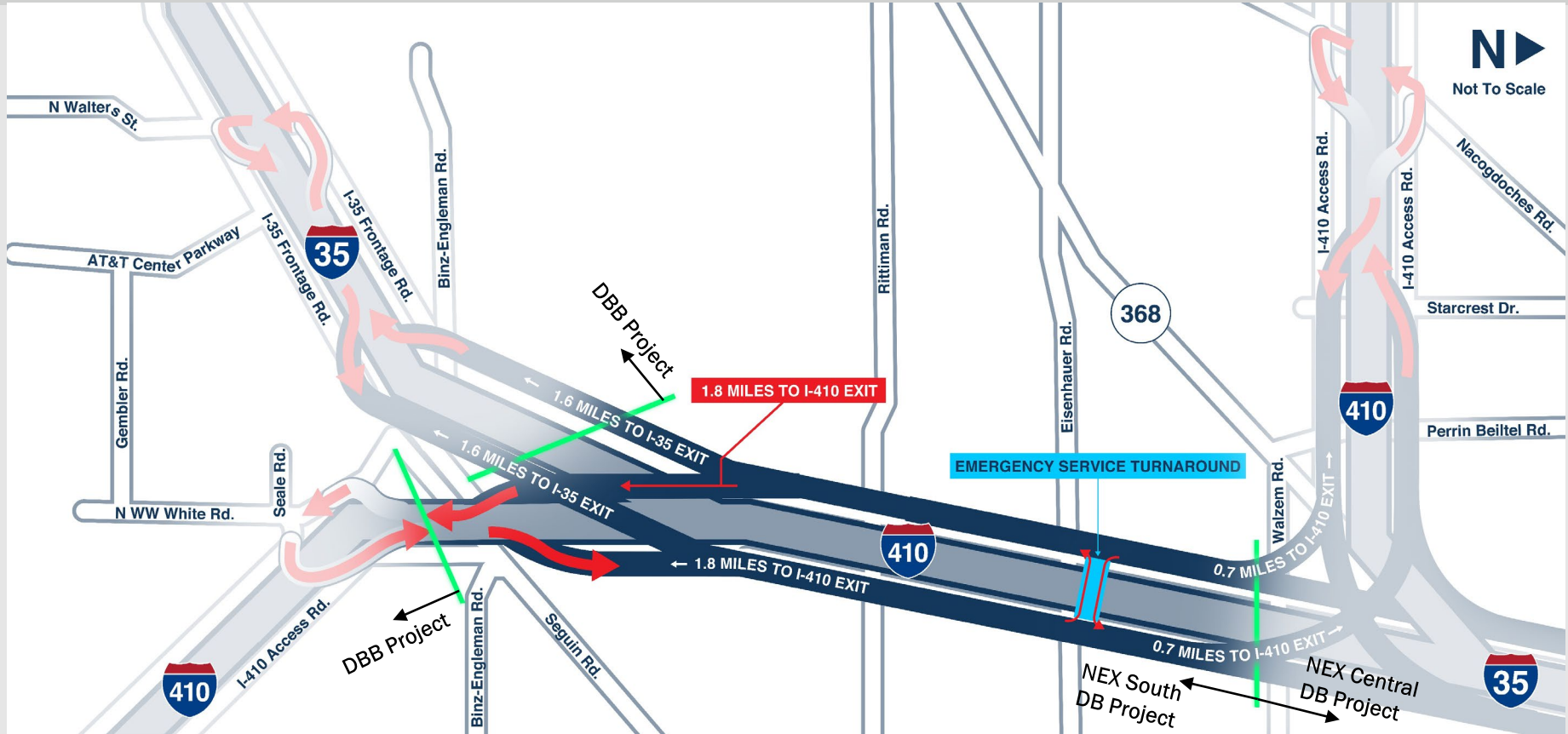
I-35 NEX South – Project Overview



I-35 NEX South – Elevated Lanes Access Points



Not To Scale



I-35 NEX South – Project Risk Map



▲ Potential HazMat locations

▲ Waters of the US

1. Walzem Creek
2. Un-named tributary to Beitel Creek

▲ Transmission line crossings

Other Risks:

- 71 identified utility conflicts, 14 utility companies
- Coordination with NEX Central DB Contractor
- Coordination with NEX South DBB Contractor
- Limited staging areas
- Complex drainage design

★ Major Third-Party/Stakeholders (major traffic generators and business access)

1. H-E-B Distribution Warehouse
2. Union Pacific Railroad Facility
3. Rackspace Event Center



- Utility relocations and impacts
- Construction phasing
 - Main lane and frontage road lane closures to accommodate bridge construction
 - Ramp closures for relocations/optimizations
 - Limited staging area for construction activities
- Traveling impacts during construction
 - Work zone management strategies
 - Traffic incident management (inside work areas—emergency response)
 - Public information efforts
- Downtime of travel lanes during construction
- Business impacts during construction (accommodate business owners' needs)
- Environmental permit approvals



- Minimize impacts to traveling public/large traffic generators
 - Align completion of all NEX segments, including opening of entire facility to traffic
 - Improve mobility, operational efficiency, accessibility, safety, and emergency response
 - Minimize delays and inconvenience to the public
- Balance risk and innovation
 - Cost-effective and expedited completion of the project
 - Completion that is on schedule, on budget, and of the highest degree of quality
 - Minimize impacts to utilities within the project ROW
- Increase contractor opportunities
 - Facilitate participation of work by DBEs, HUBs, women-owned and minority business enterprises
 - Encourage even distribution of talent and labor pool in the region across projects

I-35 NEX SOUTH DB PROJECT – STATUS



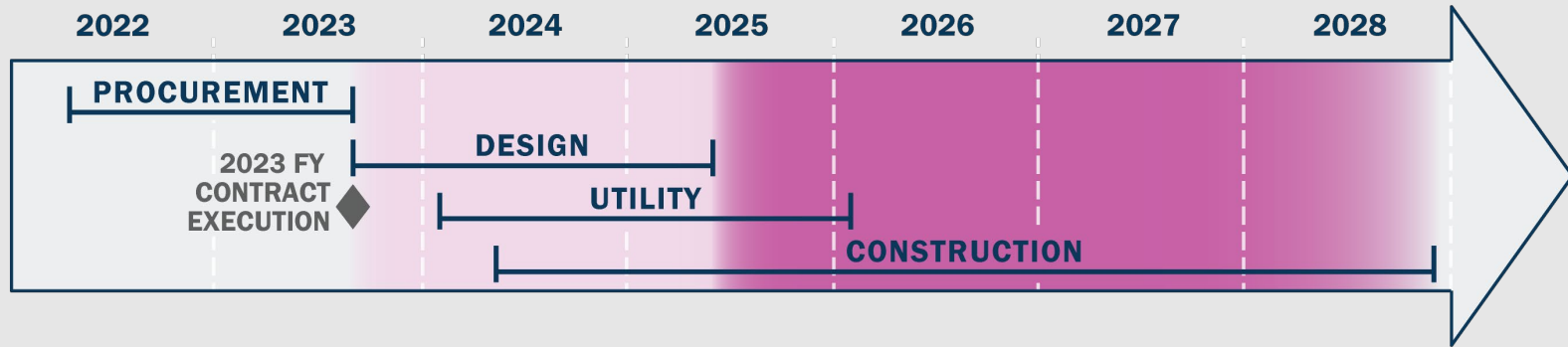
- **Contract Delivery Method**
 - NEX South DB will be delivered as a Design Build project with a potential Capital Maintenance Agreement
- **Project Cost Estimate**
 - Anticipated Design-Build Contract (DBC) cost of approximately \$600M
- **Design Exceptions**
 - Approval for I-35 NEX South exceptions anticipated by August 2022
- **Right of Way (ROW)**
 - All parcels available for construction
- **Utilities**
 - Interlocal Agreement with SAWS (pending)
 - CPS Energy transmission lines (two crossings)
- **Other Due Diligence**
 - Geotechnical investigations (complete)
 - Drainage report (pending)
 - Hazardous Materials investigations (pending)
 - Subsurface Utility Engineering (SUE) investigations (complete)
- **No railroad work**



- I-35 NEX South Design Build Project*
 - April 2022 – RFQ Issuance
 - July 2022 – QSs Due
 - August 2022 – Shortlist
 - September 2022 – Draft RFP
 - April 2023 – Proposals Due
 - May 2023 – Conditional Award
 - August 2023 – Contract Execution

*All projected dates subject to change

I-35 NEX South – Design Build Project Implementation Schedule



I-35 NEX SOUTH DBB PROJECT – STATUS



- TxDOT Projected Contracts
 - <https://ftp.dot.state.tx.us/pub/txdot/ppd/projected-contracts/projected-contracts-list-2022.pdf>
 - Solicitation No. 601CT0000005108
 - Solicitation No. 601CT0000005134
- Consultant Information Meetings
 - <https://www.txdot.gov/business/consultants/architectural-engineering-surveying/meetings.html>
- Questions about DBB projects can be directed to:
 - <https://txdot.bonfirehub.com>

THANK YOU FOR ATTENDING

PLEASE PROVIDE COMMENTS & FEEDBACK FOR THE
NEX SOUTH DESIGN BUILD PROJECT VIA THE PROJECT EMAIL:

TXDOT-SAT-ALTD-I35NEXSOUTH@TXDOT.GOV