

DAVID HIRSCH SCHOOL

ST.

ST.

REID

DAN

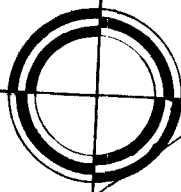
DRIVE

U.S. ENG'R. DEPT.

SHIP CHANNEL

NUECES COUNTY NAVIGATION
DISTRICT

BESSIE ST.



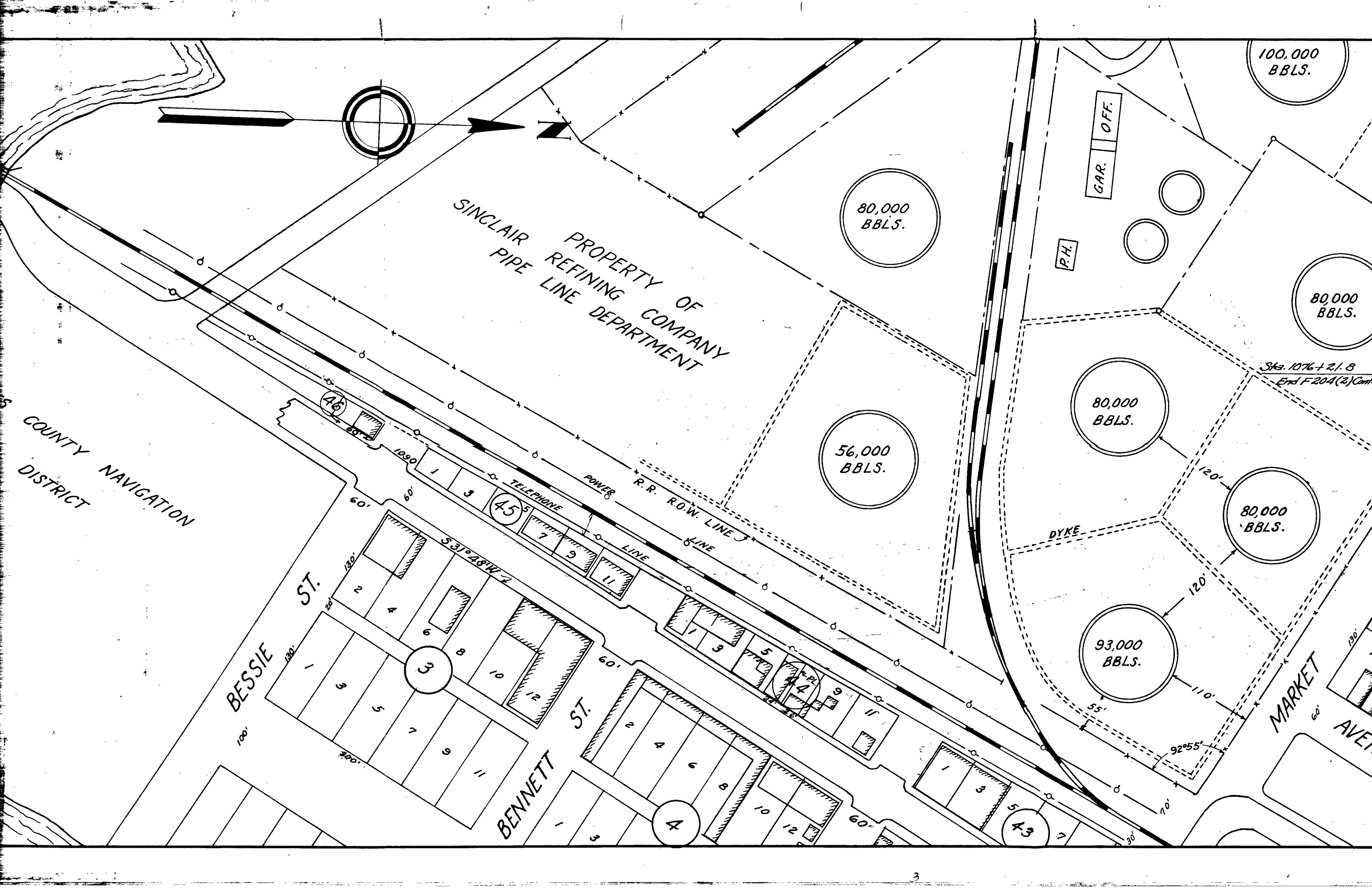
105

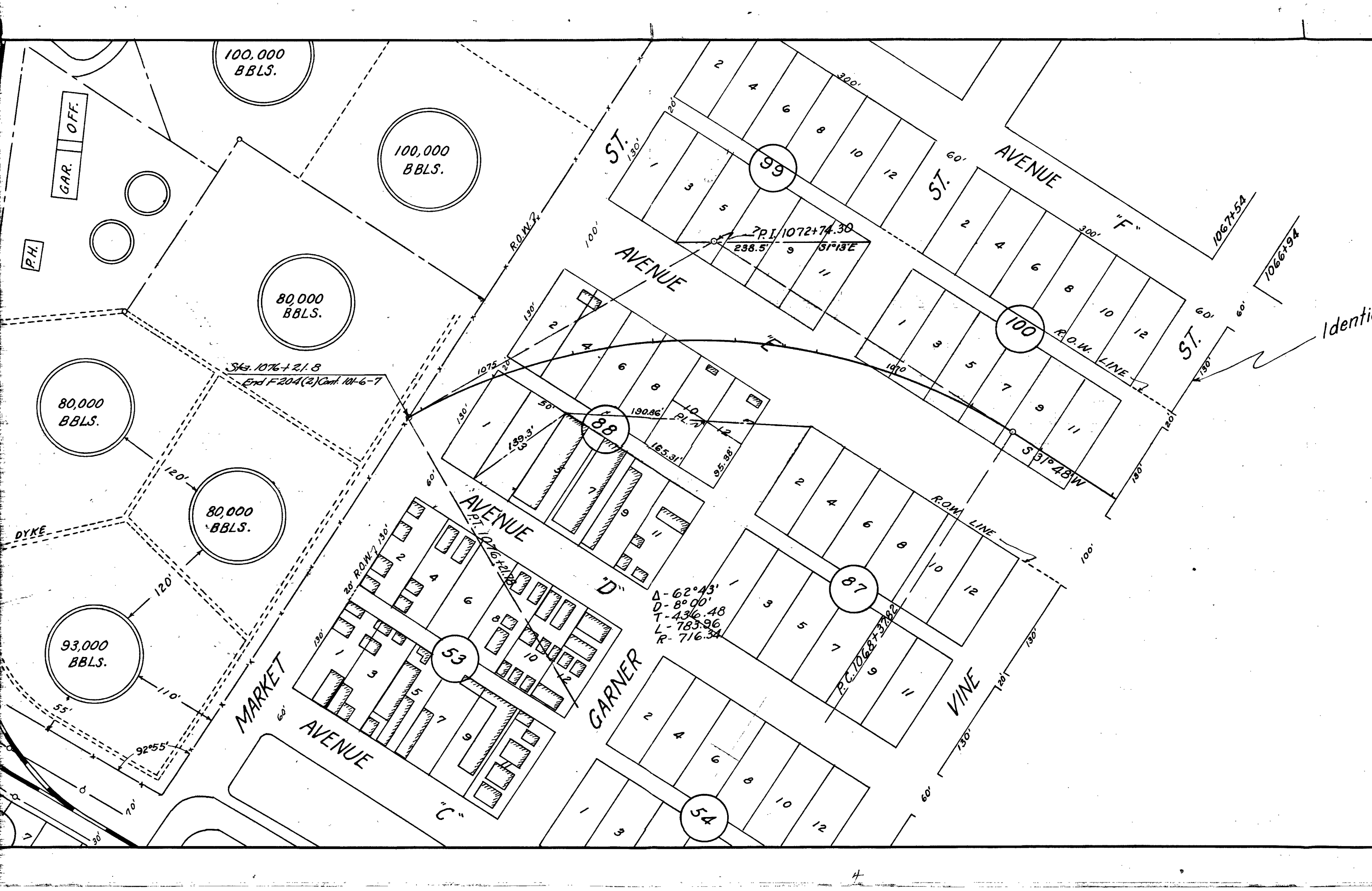
94

93

46

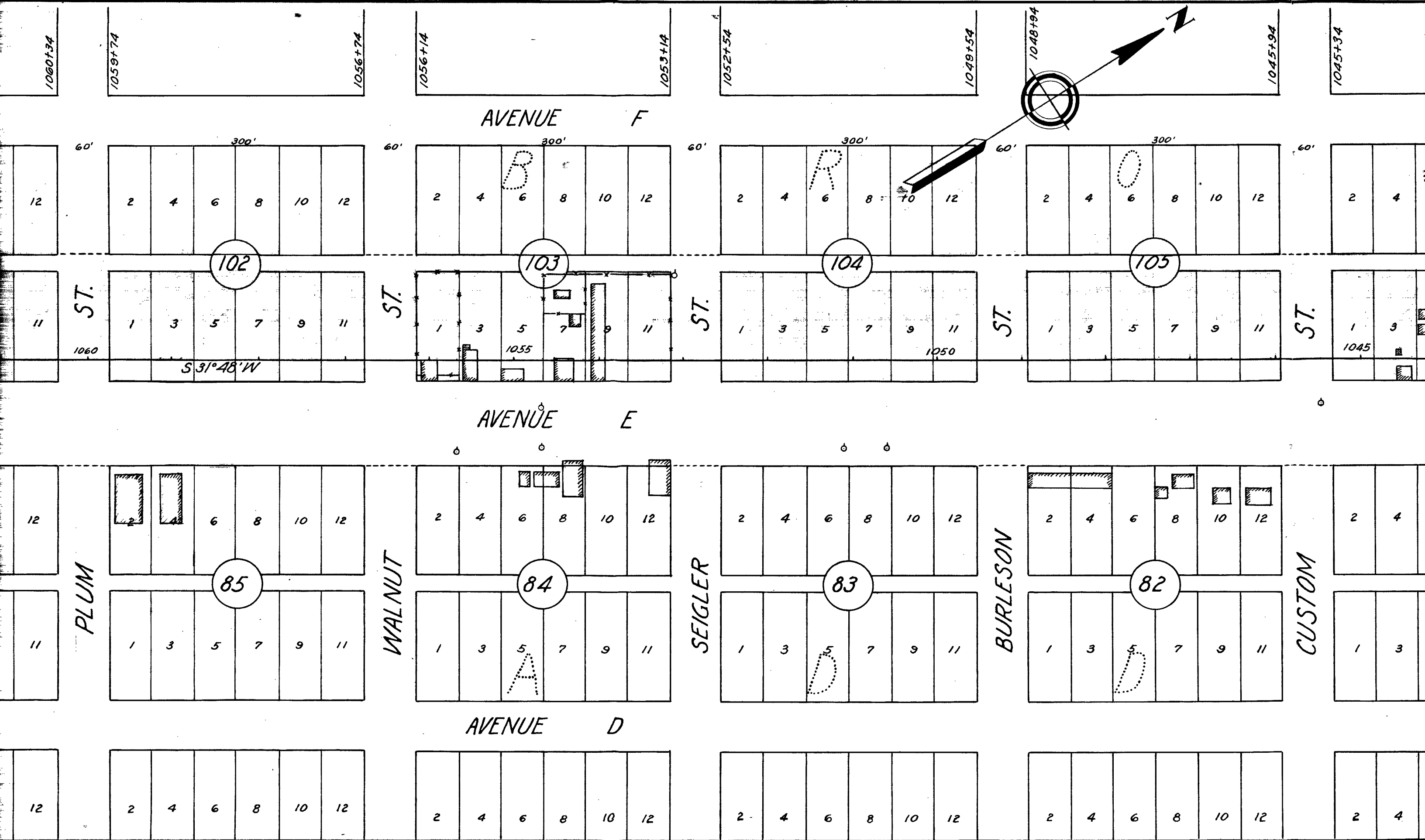
3



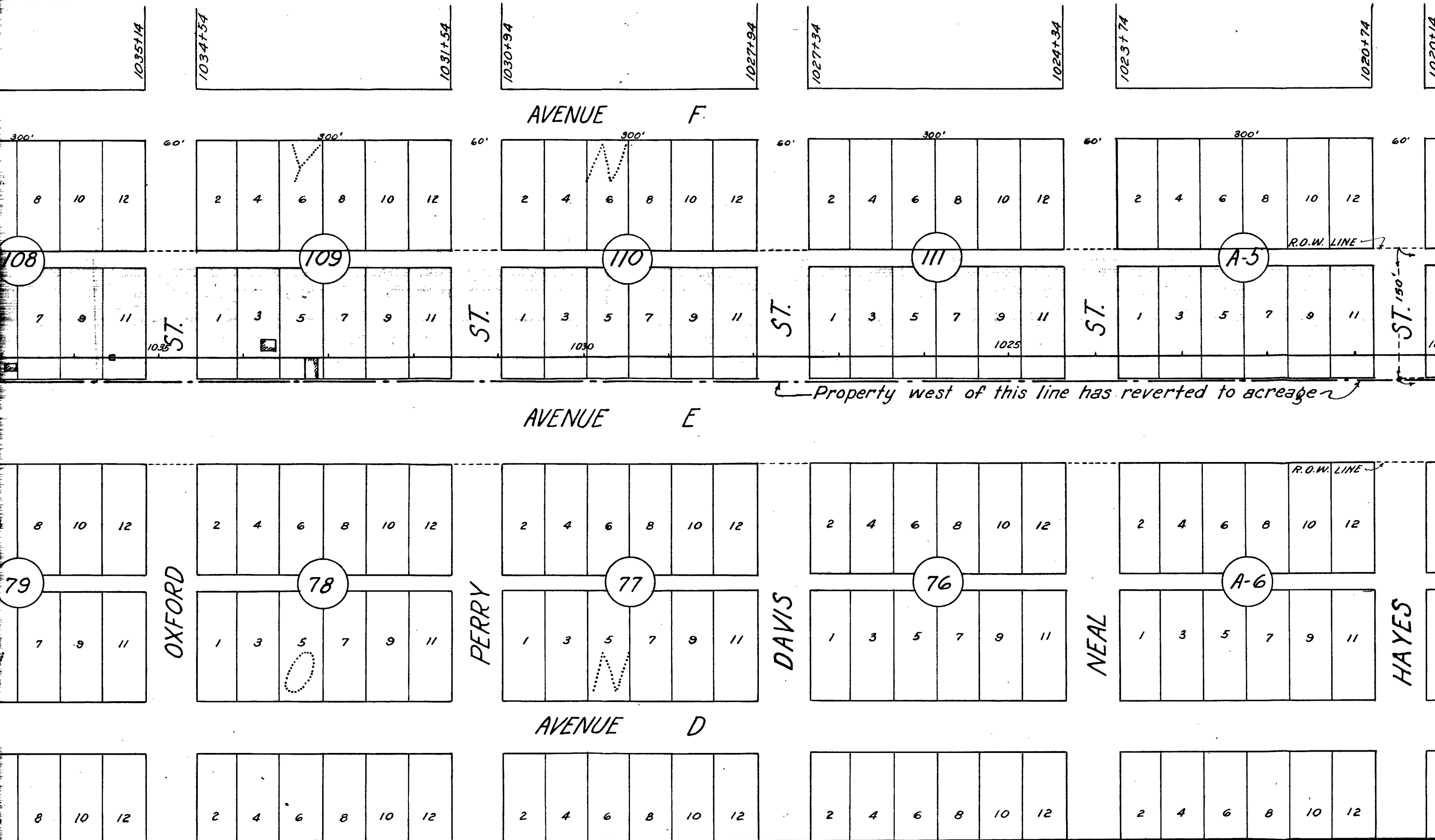


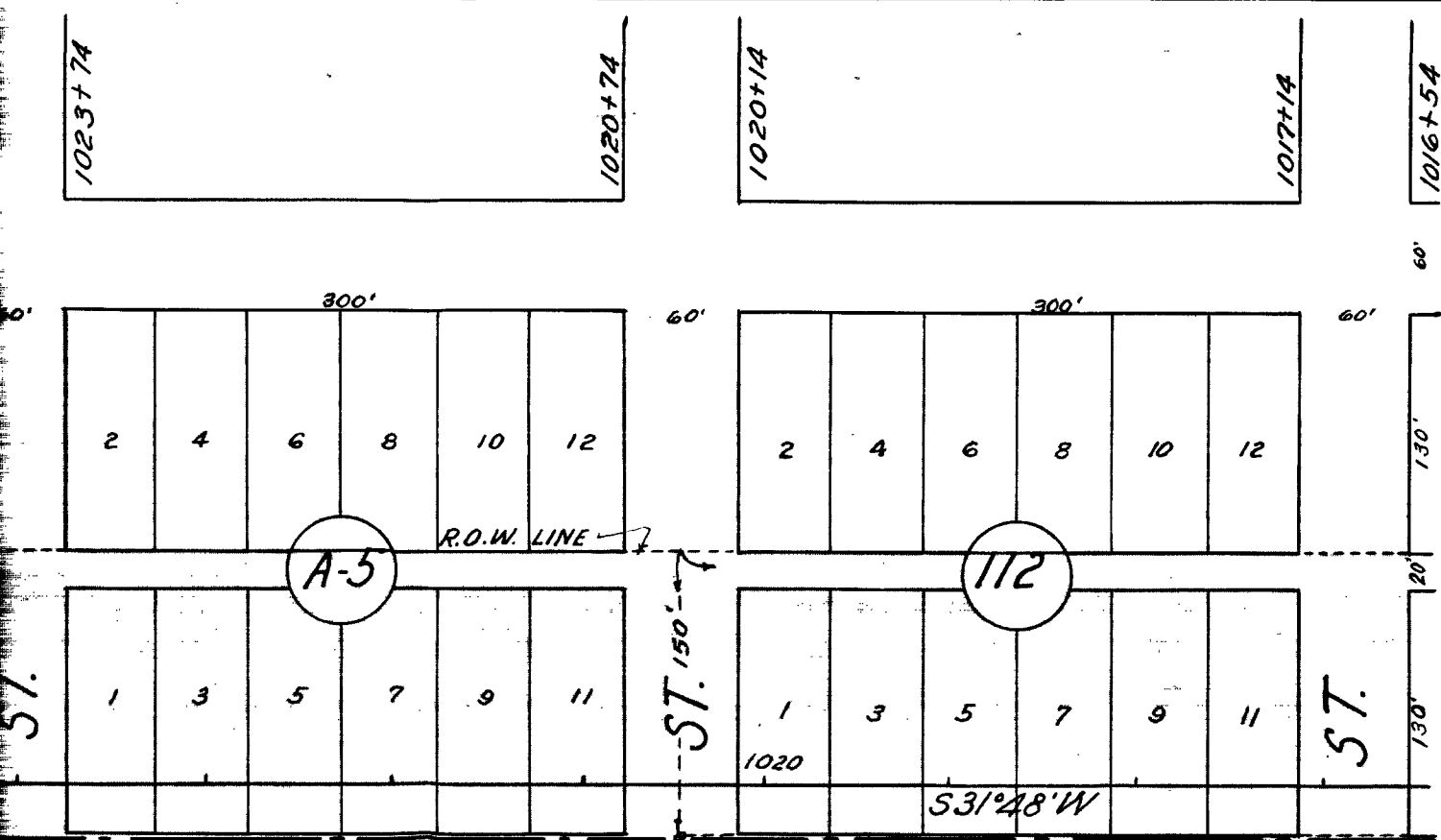


Identical

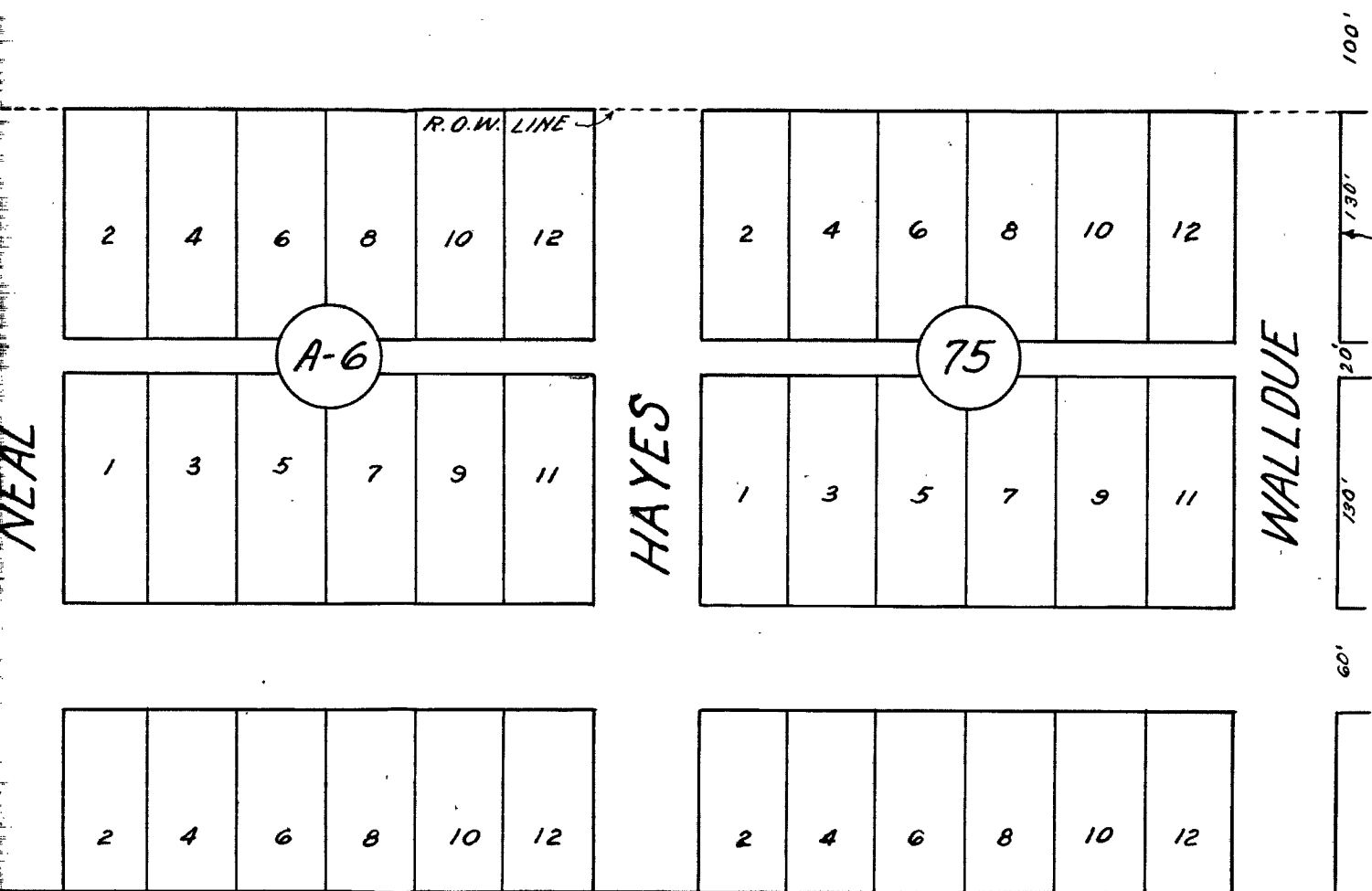






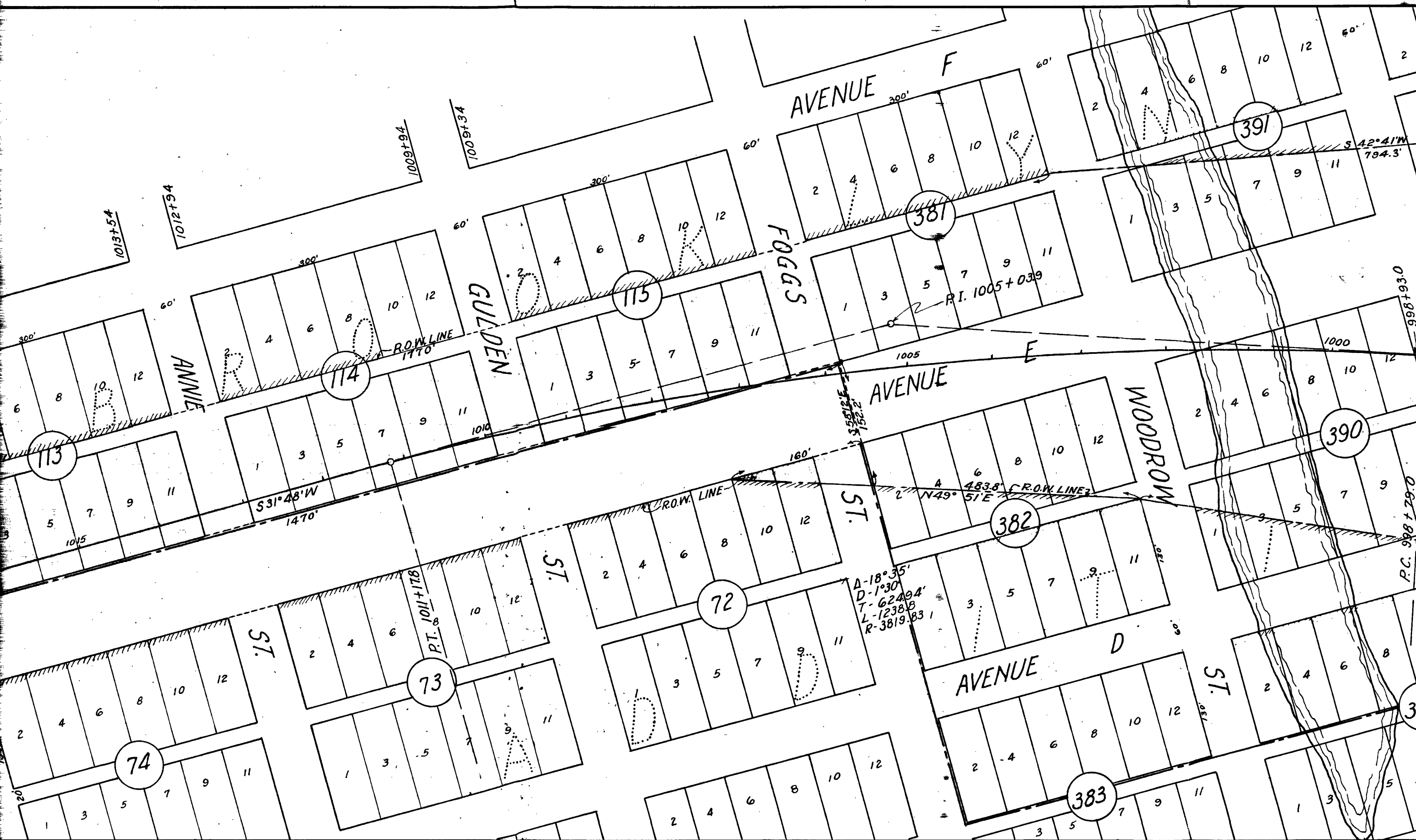


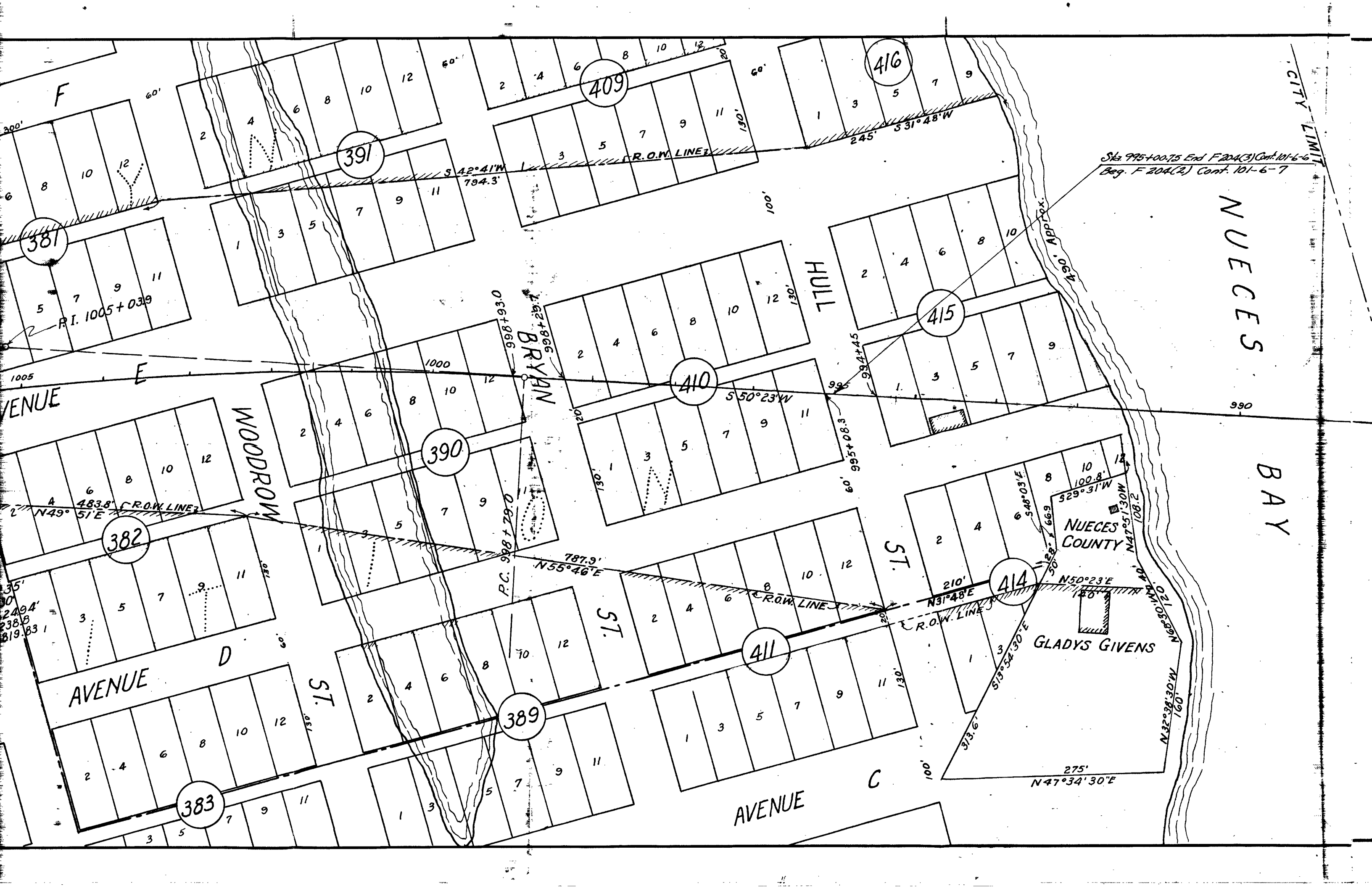
has reverted to acreage



Identical







NUECES

BAY

CITY LIMIT

Sta. 995+00.75 End F204(3) Cont. 101-6-6
Beg. F204(2) Cont. 101-6-7

NUECES
COUNTY

GLADYS GIVENS

HULL
ST.

ST.

ST.

BRYAN
ST.

WOODROW
ST.

AVENUE

AVENUE

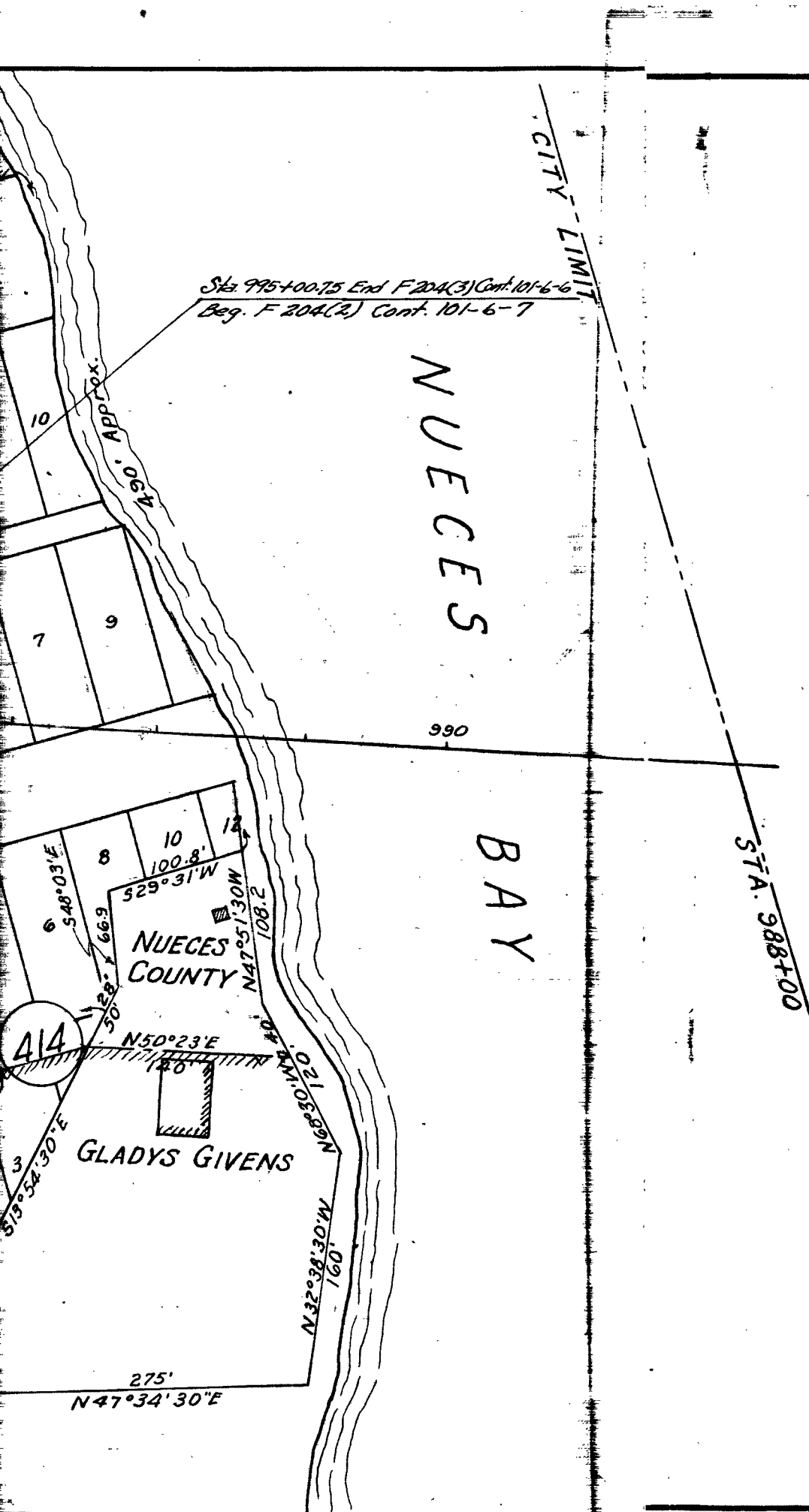
AVENUE

F

E

D

C



BROOKLY

GRANTOR	BLOCK	LOT
✓ 1 W. M. NEYLAND	88	1
✓ 2 W. M. NEYLAND	88	2,4 & Part of 3
✓ 3 ED WILLIAMS, et ux	88	6 & 8
✓ 4 CHARLES PRIMEAUX, et ux	88	W. 65' of 10 & W. 65'
✓ 5 GLADYS BRUHL GIBSON, et al	88	Part of 10
✓ 6 JAMES E. CLARK, et ux	99	Part of 5, 7, 9, & 11
* ✓ GUARANTY TITLE & TRUST CO. AND JACK POPE	99	Part of 5, 7, 9 & 11
✓ ✓ MRS. A. J. GRANTHAM	99	Part of 7 & 11
✓ 7 GUARANTY TITLE & TRUST CO. AND JACK POPE	100 101	1, 3, 5, 9, 11 5, 7, 9, 11
	102	1, 3, 5, 7, 9, 11
	107	1, 3, 5, 7, 9, 11
✓ 8 KING RANCH	100	7
✓ 9 J. B. HUBBARD	A-1	1
	108	9 & 11
✓ 10 KING RANCH	A-1	3, 5, 7, 9, 11
✓ 11 GUARANTY TITLE & TRUST CO. AND JACK POPE	101 104 105	1 & 3 1, 3, 5, 7, 9, 11 1, 3, 5, 7, 9, 11
✓ 12 C. A. BURGER, et ux	103	1
✓ 13 EUGENE OTIS COOLEY	103	3 & 5
✓ 14 HARVEY J. SCOTT, et ux	103	7
✓ 15 C. B. COLLINS, et ux	103	9 & 11
✓ 16 W. G. MARTIN, et ux	106	1
✓ 17 ISABELL REILLY	106	3
✓ 18 G. E. HUDSON, et ux	106	5, 7, 9
✓ 19 THOMAS J. FRAIN, et ux	106	11
✓ 20 C. C. STONE	108	1

BROOKLYN ADDITION TO THE CITY OF CORPUS CHRISTI

GRANTOR	BLOCK	LOT	CONVEYANCE	VOLUME	PAGE	GRANTOR	BLOCK
	88	1	DEED	424	558	✓ 21 GEORGE TAYLOR	108
	88	2,4 & Part of 3	DEED	424	556	22 FRANCIS N. JONES	108
et ux	88	6 & 8	DEED	416	502	✓ 23 E. R. KLEBERG	109
EAUX, et ux	88	W. 65' of 10 & W. 65' of 12	DEED	416	325	✓ 24 G. C. RICHARDSON, et ux	109
GIBSON, et al	88	Part of 10	DEED	407	263	✓ 25 MESOG V. DONIGAN, et al	109
K, et ux	99	Part of 5, 7, 9, & 11	DEED	424	589	✓ 26 GUARANTY TITLE & TRUST	109
LE & TRUST						CO., TRUSTEES OF H. B.	110
K POPE	99	Part of 5, 7, 9 & 11	DEED	416	392	BALDWIN ESTATE	110
THAM	99	Part of 7 & 11	DEED	416	395	✓ 27 EDWARD R. KLEBERG &	
LE & TRUST	100	1, 3, 5, 9, 11				RICHARD KING, DIRECTORS OF	
POPE	101	5, 7, 9, 11				RINCON IMPROVEMENT CO. A-	
	102	1, 3, 5, 7, 9, 11				✓ 28 H. B. RAGSDALE	113
	107	1, 3, 5, 7, 9, 11	DEED	414	284	✓ 29 GUARANTY TITLE & TRUST	a
	100	7	DEED	426	103	CO. AND JACK POPE	all
A-1		1					Blc
	108	9 & 11	DEED	454	267		c/1
A-1		3, 5, 7, 9, 11	DEED	417	243		112
LE & TRUST	101	1 & 3					113
POPE	104	1, 3, 5, 7, 9, 11					114
	105	1, 3, 5, 7, 9, 11	DEED	417	509		115
et ux	103	1	DEED	415	576		38
COOLEY	103	3 & 5	DEED	421	592		38
OTT, et ux	103	7	DEED	420	92		39
et ux	103	9 & 11	DEED	416	332		39
et ux	106	1	DEED	408	448		40
LLY	106	3	DEED	407	204		41
et ux	106	5, 7, 9	DEED	406	443		41
RAIN, et ux	106	11	DEED	408	286		41
	108	1	DEED	409	343		7

CITY OF CORPUS CHRISTI

TEXA

	GRANTOR	BLOCK	LOT	CONVEYANCE	VOLUME	PAGE
✓ 21	GEORGE TAYLOR	108	3 & 5	DEED	419	53
✓ 22	FRANCIS N. JONES	108	7	<i>Unsecured</i>		
✓ 23	E. R. KLEBERG	109	1 & 3	<i>Unsecured</i>		
✓ 24	G. C. RICHARDSON, et ux	109	5	DEED	414	85
✓ 25	MESOG V. DONIGAN, et al	109	11	DEED	427	516
✓ 26	GUARANTY TITLE & TRUST	109	7 & 9			
	CO., TRUSTEES OF H. B.	110	1, 3, 5, 7, 9, 11			
	BALDWIN ESTATE	111	1, 3, 5, 7, 9, 11	DEED	411	590
✓ 27	EDWARD R. KLEBERG & RICHARD KING, DIRECTORS OF RINCON IMPROVEMENT CO. A-5		1, 3, 5, 7, 9, 11	DEED	408	299
✓ 28	H. B. RAGSDALE	113	1, 3, 5	DEED	410	544
✓ 29	GUARANTY TITLE & TRUST CO. AND JACK POPE	a 10' strip, the N.W. half of original alley, from N.E. line of Charles St. across Blocks 107, 108, 109, 110, 111 & A-5 to c/l of Hayes Street.				
		112	1, 3, 5, 7, 9, 11			
		113	1, 3, 5, 7, 9, 11			
		114	1, 3, 5, 7, 9, 11			
		115	1, 3, 5, 7, 9, 11			
		381	1, 3, 5, 7, 9, 11			
		382	12 & part of 2, 4, 6, 8, 10			
		390	2, 4, 6, 8, 10, 11, 12 & part of 1, 3, 5, 7, 9			
		391	1 & part of 3, 5, 7, 9, 11			
		409	Part of 1, 3, 5, 7, 9, 11			
		410	1-12, inclusive			
		411	Part of 2, 4, 6, 8, 10, 12			
		414	2, 4, 6, 8, 10, 12			
		415	1-10, inclusive			
		72	Part of 10 & 12	DEED	413	515
* 6A		99	1, 3, & REMAINDER OF 5, 7, 9 & 11 (EASEMENT)		2175	199 (9-25-89)

FROM
SC

F.A.P. M

CONVEYANCE	VOLUME	PAGE
DEED	419	53
<i>unsecured</i>		
<i>unsecured</i>		
DEED	414	85
DEED	427	516
DEED	411	590
DEED	408	299
DEED	410	544
3,5,7,9		
DEED	413	515
9 & 11(EASEMENT)	2175	199 (9-25-89)

CONTROL 101 - 6 - 6 # 7

B

TEXAS HIGHWAY DEPARTMENT
RIGHT OF WAY MAP

U.S. HIGHWAY NO.181
NUECES COUNTY

FROM NORTH CITY LIMIT OF CORPUS CHRISTI
SOUTH TO MARKET STREET

F.A.P. NO. 204

LENGTH: 1.558 MILES

OFFICE OF DISTRICT ENGINEER
CORPUS CHRISTI, TEXAS
DISTRICT NO. 16

JULY, 1946
SCALE: 1" = 100'

F 204(2) Cont. 101-6-7
F 204(3) Cont. 101-6-6 (Part)