



# Texas Transportation Commission Meeting

September 27, 2012

Item 4.a

Grand Parkway

SH 99 Segments F-1, F-2, and G

# SH 99 Grand Parkway (Status)



**Seg. I-2** (Phase 1) – open to traffic from I-10 to FM 1405

**Seg. D** - frontage roads open to traffic. FBCTRA constructing tolled overpasses

**Seg. E** - under construction

**Seg. F-1, F-2 & G** – in procurement

**Future Priorities: Seg. H, I-1, I-2 (Phase 2&3), C, B and A**



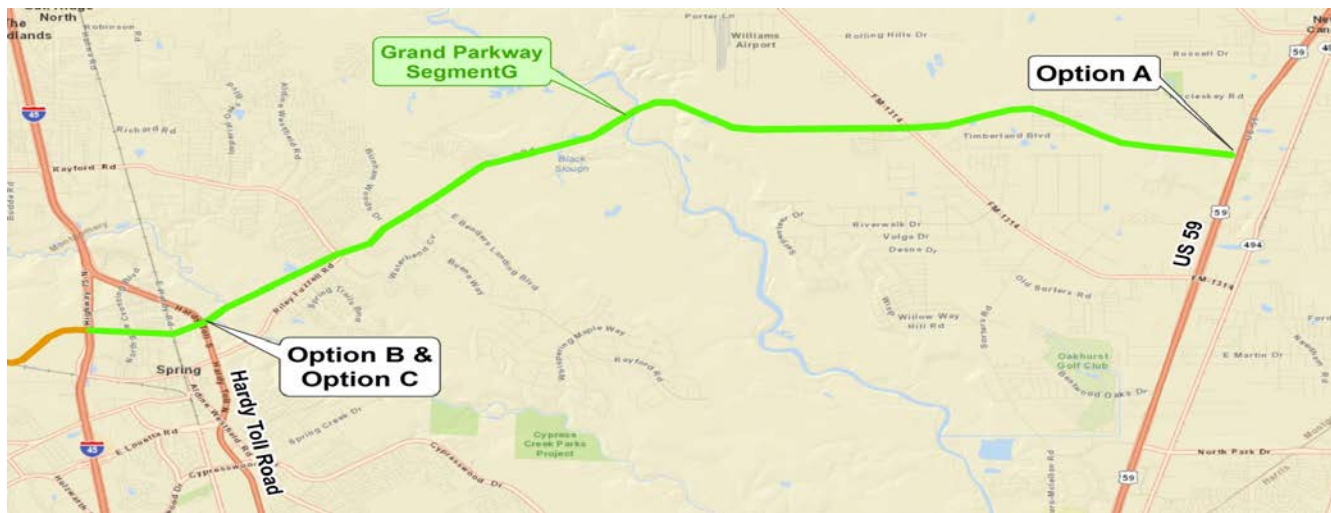
# Project Description



## Design-Build CDA

- Project Length – 37.8 miles
- Construct SH 99 from US 290 to US 59 with five major interchanges :
  - US 290
  - SH 249
  - I-45
  - Hardy Toll Rd
  - US 59 North
- Creates a tolled, four-lane highway around North & West Houston from US 59 to US 59

# Option Work Included in Proposal Direct Connectors



- Option A: EB SH 99 to NB US 59
- Option B: NB Hardy Toll Road to EB SH 99  
NB Hardy Toll Road to WB SH 99
- Option C: EB SH 99 to SB Hardy Toll Road  
WB SH 99 to SB Hardy Toll Road

# Option Work Included in Proposal Future Overpasses



- Option D: Overpass - Bauer Hockley/Grant Rd
- Option E: Overpass at Future Botkins/Juergen Rd
- Option F: Overpass at Future Cypress Hill Rd
- Option G: Overpass at Future Shaw Rd
- Option H: Overpass at Max Conrad Dr

# Project Description (Cont.)

---



## Capital Maintenance Agreement

- Three 5-year terms, commencing upon Substantial Completion
- First 5-year term mandatory
- Second and Third terms at TxDOT's option

**Tolls based on HCTRA policy**

# Project Need

---



- Improves mobility, air quality, safety and addresses growing congestion
- Significant expansion of existing facility
- Improves mobility
- Tolled lanes with complete electronic toll collection, compatible with all other toll road networks in the Region and State.

# Procurement History

---



- Nov 18, 2011 – issued Request for Qualifications
- Feb 23, 2012 – short-listed five of the seven proposers
- May 3, 2012 – issued Request for Detailed Proposals
- Aug 15 & 22, 2012 – received four proposals
- *Sept 27, 2012 – Conditional Award*



# Proposers

---



TxDOT received proposals from four shortlisted teams:

- 
- 1. Fluor Balfour Beatty Williams Brothers (FBW)**
  - 2. Kiewit-Granite Parkway Constructors JV**
  - 3. Spring Creek Constructors**
  - 4. Zachry-Odebrecht Parkway Builders**
-

# Proposer - FBW

---



- **Fluor Enterprises, Inc. (Equity Owner)**
  - **Balfour Beatty Infrastructure, Inc. (Equity Owner)**
  - **Williams Brothers Const. Co., Inc. (Equity Owner)**
- 

- Parsons Brinkerhoff, Inc
  - VMS, Inc
  - Raba-Kistner Infrastructure, Inc.
  - Kleinfelder, Central, Inc
  - Tolunat-Wong Engineers, Inc
  - URS Corporation
  - CP&Y
  - Gunda Corporation, Inc
  - IDC, Inc
  - LJA Engineering & Surveying, Inc
  - Structural Engineering Associates, Inc
  - AMEC, Inc.
  - Pinnacle Consulting Management /Group, Inc
  - TJ Lambrecht Construction
  - Valley Prestress
-

# Proposer : Kiewit-Granite Parkway Constructors JV

---



- **Kiewit Texas Construction L.P. (Equity Owner)**
  - **Granite Construction Company (Equity Owner)**
  - **Texas Sterling Construction Co. (Equity Owner)**
- 

- HDR Engineering, Inc
- Gorrondona & Associates, Inc
- Kimley-Horn and Associates, Inc.
- Midtown Engineers, LLC
- IEA, Inc
- Excelsis, Inc
- The Transtec Group, Inc.
- Half and Associates, Inc
- Rodriguez Transportation Group, Inc
- S&B Infrastructure, Ltd
- Civi Corp, LLC
- HVJ Associates, Inc
- Lamb-Star Engineering, L.P.
- Rone Engineering Services Ltd.
- Kiewit-Granite Parkway Constructors JV

# Proposer : Spring Creek Constructors



- **J.D. Abrams, LP (Equity Owner)**
- **FCC Construcccion S.A. (Equity Owner)**
- **The Lane Construction Corp., (Equity Owner)**
- **Shikun & Binui Ltd, (Equity Owner)**

- Bridgefarmer & Associates, Inc.
- Kellog Brown & Root Services, Inc.
- Professional Services Industries, Inc. (PSI)
- Universal Field Services, Inc
- Blanton & Associates, Inc
- Binkley & Barfield Consulting Engineers
- Merlin Services, Inc.
- Berg – Oliver Associates, Inc
- Landtech Consultants, Inc
- Clark Condon Associates, Inc
- Geotest Engineering, Inc
- Huitt-Zollars, Inc
- Klotz & Associates, Inc.
- Community Awareness Services, Inc
- Mantenimiento de Infraestructuras, S.A.

# Proposer : Zachry-Odebrecht Parkway Builders

---



- **Zachry Construction Corporation (Equity Owner)**
  - **Odebrecht Construction, Inc. (Equity Owner)**
- 

- Parsons Transportation Group
- Infrastructure Corporation of America
- Dannenbaum Engineering
- Brown & Gay Engineers, Inc.
- PGAL
- Innovative Engineering Associates
- Charles D. Gooden Consulting Engineers, Inc.
- Golder Associates Inc.
- Terracon Consultants, Inc.
- O.R. Colan Associates
- Costello, Inc.
- Walter P. Moore
- Cobb, Fendley & Associates, Inc.

# Scoring of Proposals



- Best Value scoring
  - Base Price 75 points
  - Option Price 5 points
  - Project Development Plan 10 points
  - Schedule 10 points
  - 
  - Maximum possible 100 points
- Price includes design, construction and capital maintenance costs
- Project Development Plan score is based upon Technical Solutions as well as the Project Management and Quality Management Plans
- Schedule scoring is based on the ratio of Total Days Saved by a Proposer to the predetermined schedule benchmark savings

# Scoring of Financial Proposals (Additional Information)

---



- Base Price Score = PV of Base Price + Value of ATC Adjustment + PV of Maintenance Base Price – Value of Complexity Point Adjustment (ROW reduction incentive)
- Option Price Score = PV of Option Price + PV of Maintenance Option Price
- Lowest Price Value in each category received the maximum points and others received points pro-rata based on their Price Value to the lowest Price Value

# Results

---



---

## Zachry-Odebrecht Parkway Builders

---

- Zachry Construction Corporation (Equity Owner)
  - Odebrecht Construction, Inc. (Equity Owner)
- 

**is recommended to the Texas Transportation Commission as providing the best value**



# Results (cont.)



- Zachry-Odebrecht Pkwy Builders.....92.20
- Fluor/Balfour Beatty/Williams Bros. ....72.11
- Spring Creek Constructors.....70.07  
    J.D. Abrams/FCC/Lane  
    Shikun & Binui
- Kiewit/Granite Pkwy Constructors.....63.04

# Results (Cont.)

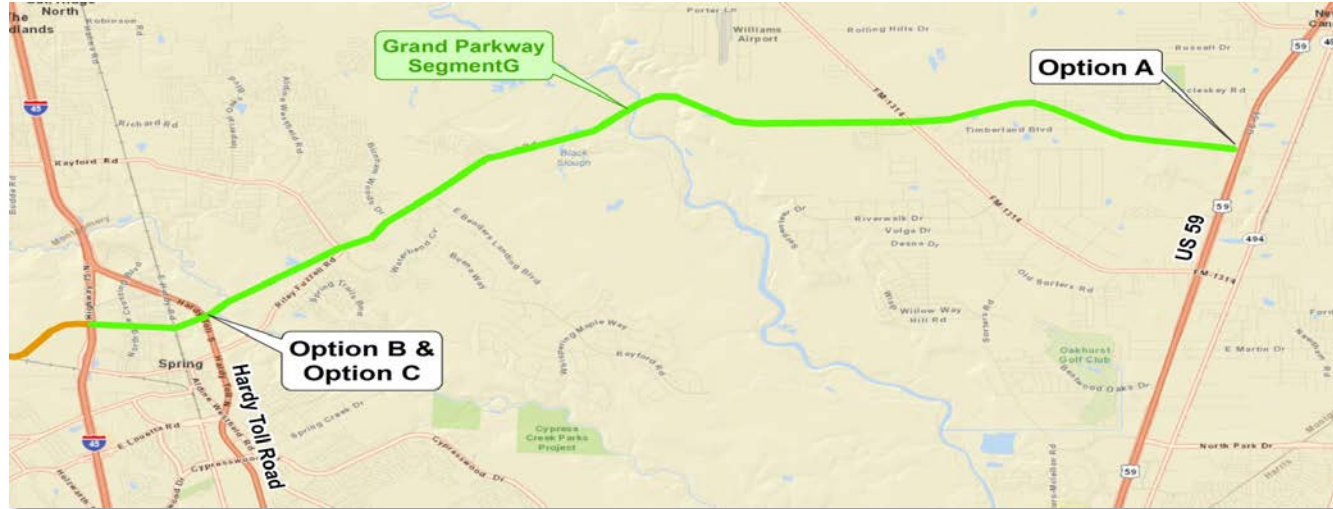


## Zachry-Odebrecht Parkway Builders

• Base Development Price	\$ 1,007,053,000
• Base CMA Price	\$ 55,156,750
• Option Price	\$ 36,500,000
• Option CMA Price	\$ 2,726,205
• Total Design & Construction	\$ 1,043,553,000
• Total Committed Contract (5yrs O&M)	\$ 1,055,086,895
• Total Contract with 15yrs O&M	\$ 1,101,435,955

# Option Costs

## Direct Connectors



- Option A: EB SH 99 to NB US 59 - \$10,000,000
- Option B: NB Hardy Toll to EB SH 99  
NB Hardy Toll to WB SH 99 - \$10,318,000
- Option C: EB SH 99 to SB Hardy Toll  
WB SH 99 to SB Hardy Toll - \$ 8,882,000

# Option Costs

## Future Overpasses



- Option D: at Bauer Hockley/Grant Rd - \$ 1,300,000
- Option E: at Future Botkins/Juergen Rd - \$ 2,000,000
- Option F: at Future Cypress Hill Rd - \$ 2,000,000
- Option G: at Future Shaw Rd - \$ 1,000,000
- Option H: at Max Conrad Dr - \$ 1,000,000

# Next Steps

---



- Environmental permitting (January 2013)
- Negotiate final terms of CDA
- FHWA final concurrence
- Attorney General -- legal sufficiency review
- 30-day notice and information to Legislative Budget Board Execution of the CDA by Jan 2013
- Contract for development, design and construction of the project
  - Construction completed within 3 years
  - Capital Maintenance Agreement, commencing upon completion of construction

# TxDOT Evaluation

---



- Over 55 people participated in the Evaluation
  - 28 – TxDOT Staff
  - 25 – Consultant / Advisors
  - FHWA

---

# Questions?

***Staff recommends and requests your approval of this minute order.***