



# SH 183 Expansion Project

Industry Workshop

January 22, 2024



**1** Corridor Summary

3 – 6

**2** Overview & Status

7 – 13

**3** Project Procurement

14 – 19

# CORRIDOR SUMMARY

# SH 183 Expansion Project Overview



Approximate Limits\*:

- From: SH 121
- To: SH 161/President George Bush Turnpike (PBGT)

Length\*: 6 miles

Estimated Overall Construction

Cost\*: \$700M\*\*

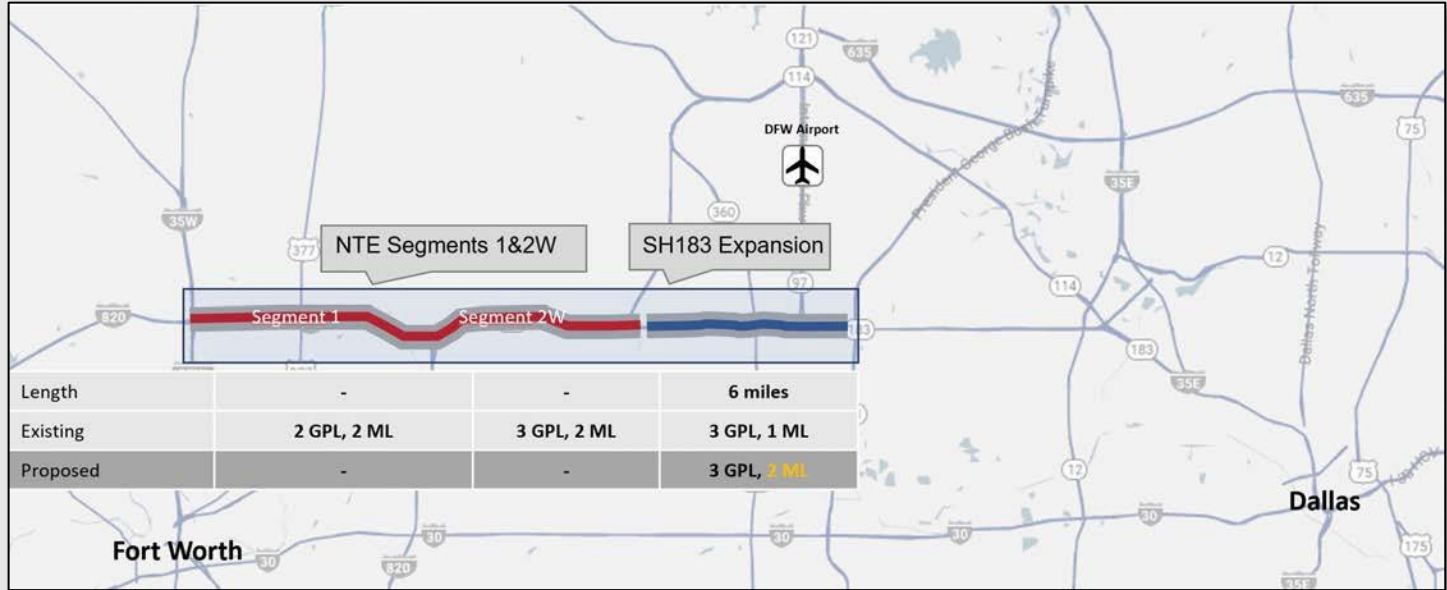


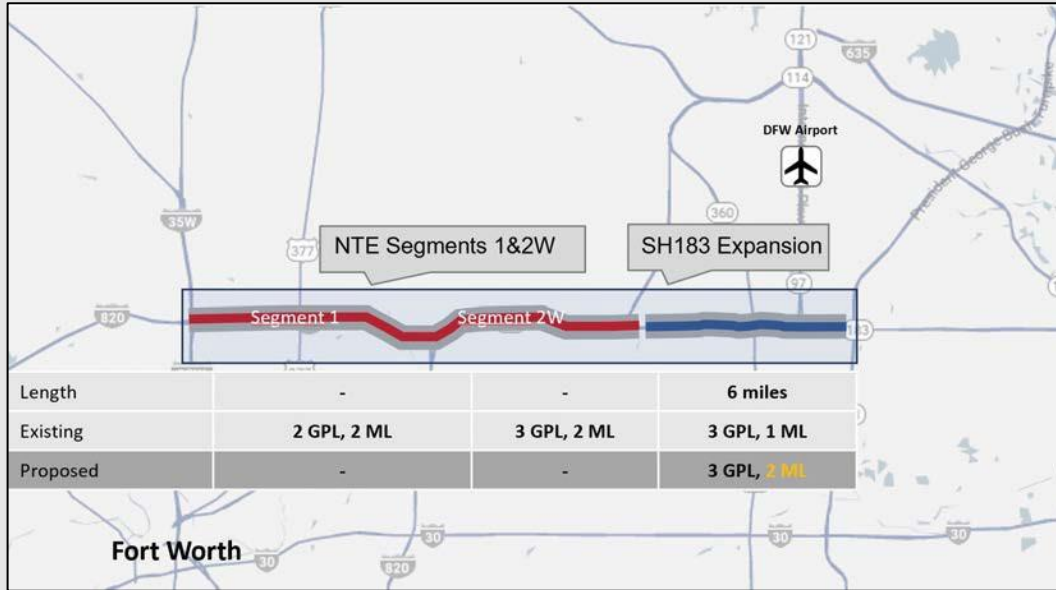
\*Preliminary Subject to Change  
\*\*Cost in 2023 Dollars. Construction Only.

# What Prompted SH 183 Expansion Project?



- North Tarrant Express (NTE) Segments 1 & 2W has started the design and construction to add a 3<sup>rd</sup> general purpose lane (GPL) in NTE Segment 1 and a 3<sup>rd</sup> managed lane (ML) in Segment 2W.
- SH 183 Expansion proposes to add 1 managed lane in each direction, for a total of 2 managed lanes in each direction.





## NTE TEXPRESS Segment 2W

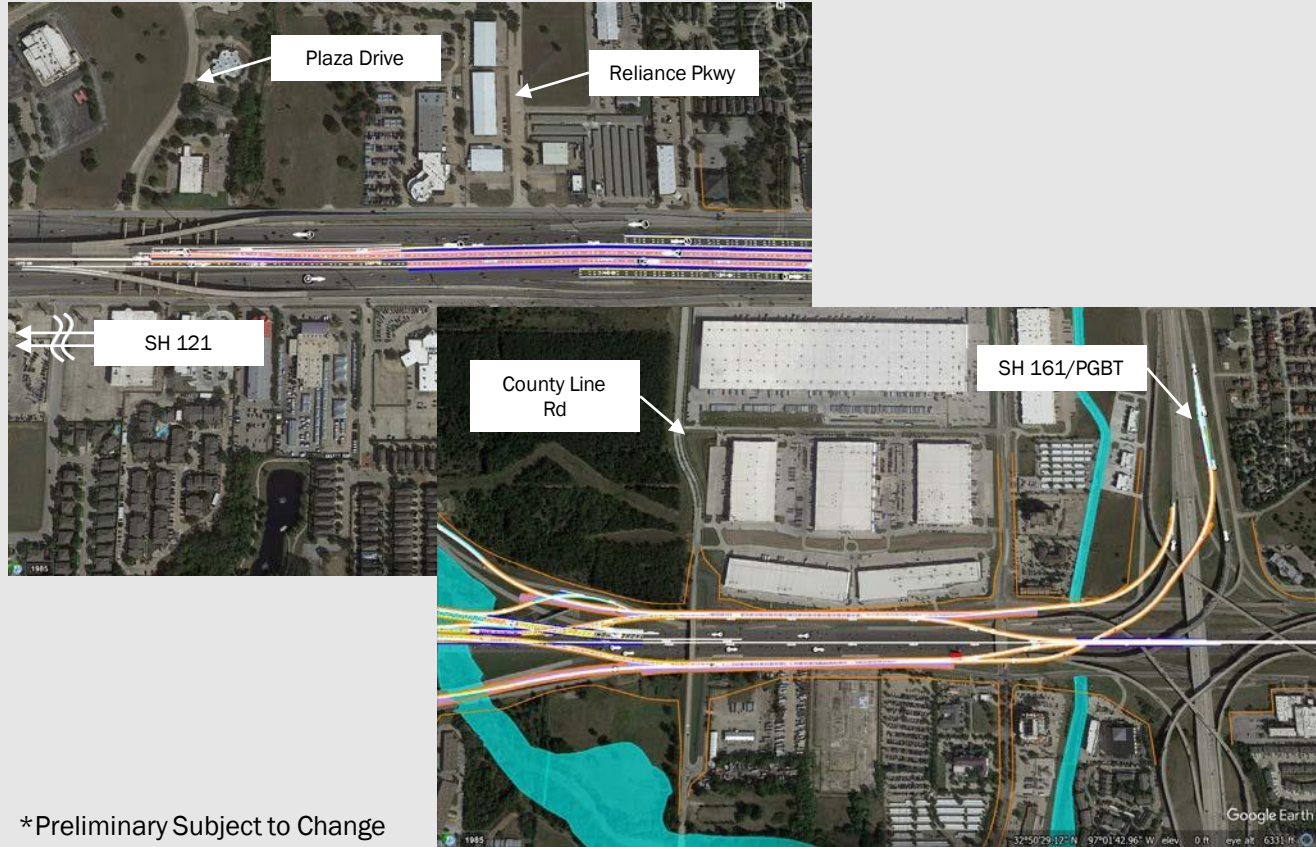
- Immediately adjacent, west of SH 183 Expansion
- Construct 1 additional managed lane in each direction, for a total of 3 in each direction
- Construction began 9/30/2023
- Substantial Completion deadline 1/30/2027
- Final Acceptance deadline 4/30/2027

# OVERVIEW & STATUS

# SH 183 Expansion Project Description\*



- Construct 1 additional managed lane each direction (Total of 2).
- Direct connectors to SH 360, International Parkway, and PGBT.
- Advancing portions of the National Environmental Policy Act (NEPA) Schematic Ultimate Configuration.

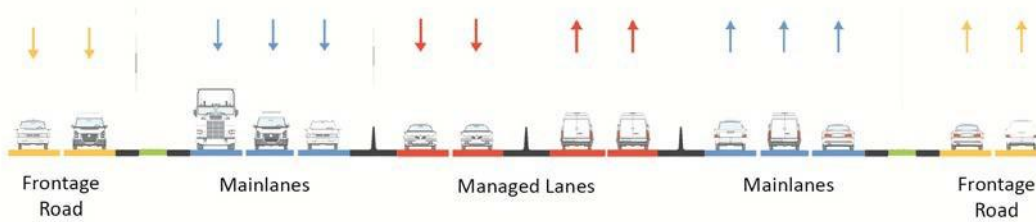


\*Preliminary Subject to Change

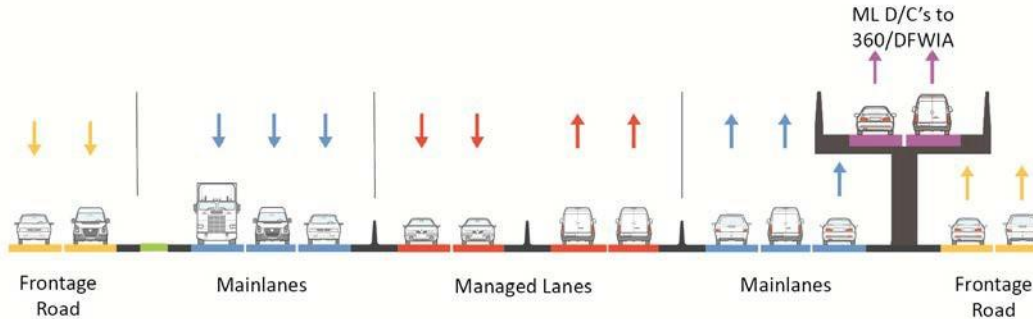




## Proposed Interim Typical Section @ Ector Dr.



## Proposed Interim Typical Section @ American Blvd.



\*Preliminary Subject to Change

# SH 183 Expansion Project – Goals



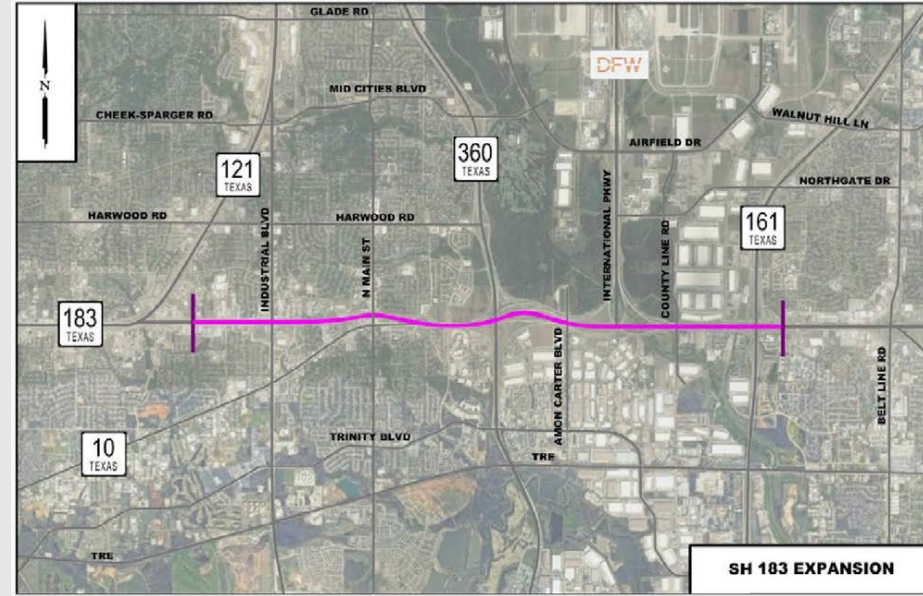
- Expand economic opportunities in the region by improving the mobility of persons and goods.
- Improve connectivity and minimize barriers to surrounding communities, businesses, and the DFW Airport.
- Improve mobility, lane balance, operational efficiency, safety, and emergency response by providing additional capacity to meet current and future travel demands and expansion of adjacent projects.
- Complete the Project on schedule, on budget, and to the highest degree of quality possible.
- Obtain high quality maintenance meeting or exceeding TxDOT requirements and expectations.
- Contribute to air quality attainment goals in the region.



# SH 183 Expansion Project – Risks/Challenges



- Keeping existing managed lanes operation – Traffic and Revenue impacts
- Segment 2W interface coordination
- Major stakeholder coordination – American Airlines, DFW Terminal F Expansion
- Coordination with North Texas Toll Authority regarding SH 161/PGBT direct connectors
- Overhead electric transmission lines near PGBT





- Traveling impacts during construction
  - Work zone management strategies
  - Traffic incident management (inside work areas – emergency response)
  - Public information efforts
- Downtime of travel lanes during construction
- Business impacts during construction

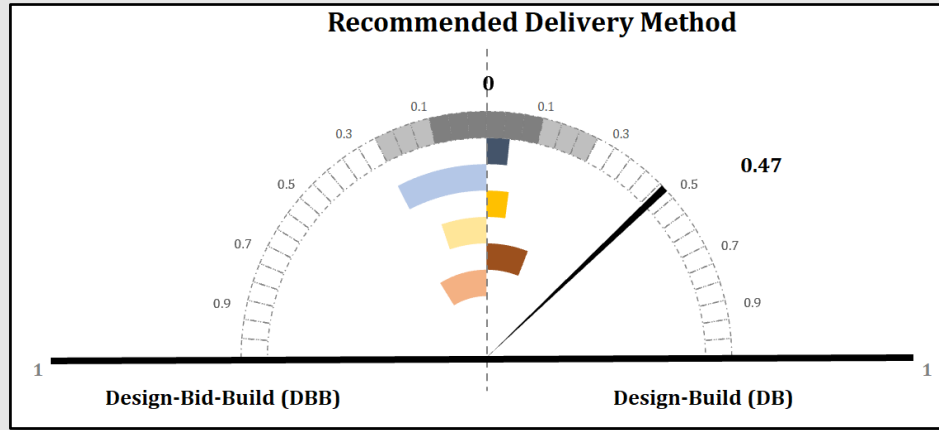




- NEPA
  - Anticipated final schematic and reevaluation completed Summer 2024.
- Project Construction Cost Estimate
  - Approximately \$700M\*\*
- Design Exceptions
  - None known or anticipated
- Right of Way (ROW)
  - One parcel needed (TxDOT will acquire)
- Utilities
  - Subsurface Utility Engineering (SUE) in process
  - More detailed investigation and coordination is ongoing
- Other Due Diligence
  - Updated project survey – Lidar in process
  - Project Schematic – 60% complete
  - Geotechnical investigations started January 2024
  - Drainage report available in Spring 2024
  - Federal Aviation Administration – glide path will be coordinated by TxDOT
  - U.S. Army Corps of Engineers – if necessary, will be coordinated by TxDOT

\*Preliminary Subject to Change  
\*\*Cost in 2023 Dollars. Construction Only.

# PROJECT PROCUREMENT



## Major Contributing Factors:

- The Project will significantly benefit from designer-contractor integration
- Significant schedule savings can be achieved from overlapping design and construction
- Many innovation opportunities for:
  - Traffic handling and construction sequencing
  - Utility relocation avoidance/minimization
  - Innovative design and materials



## SH 183 Expansion Project



- Two step procurement process
  - RFQ
  - RFP





## SH 183 Expansion Project

Winter/Spring  
2024

Summer 2024

Fall 2024

Winter 2024

Fall 2025

Industry  
Workshop

Request for  
Qualifications

QS  
Evaluations  
(Shortlisting)

Request for  
Proposals

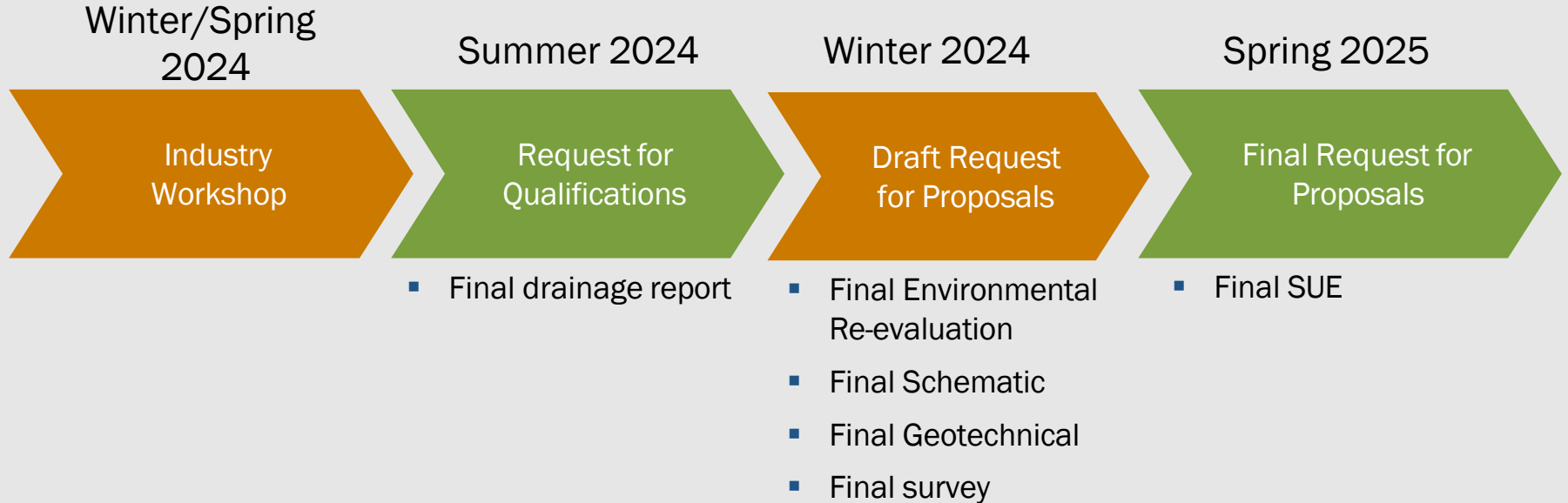
Proposal  
Evaluation /  
Conditional  
Award

- Industry Workshop
  - Offeror feedback on delivery method and questions due – February 12, 2024
  - Pre-Procurement Partnering One-on-One Meetings – March 4 - 6, 2024

\*Preliminary Subject to Change.



## SH 183 Expansion Project



\*Preliminary Subject to Change.



- All correspondence, including feedback and questions, may be submitted via e-mail to:

[TxDOT-FTW-ALD-SH183Expansion@txdot.gov](mailto:TxDOT-FTW-ALD-SH183Expansion@txdot.gov)