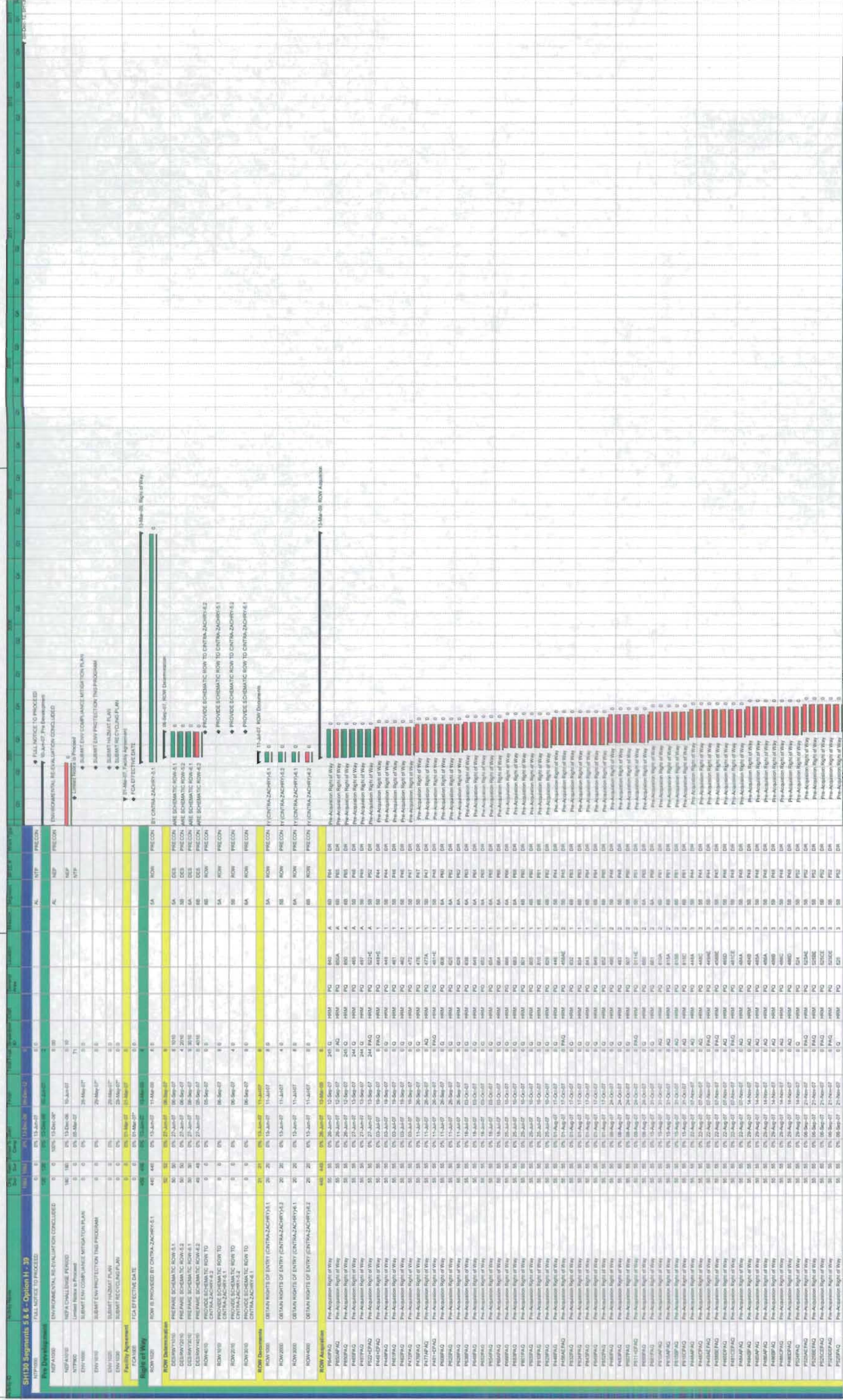


**EXHIBIT 10**

**FACILITY BASELINE SCHEDULE**







Legend for task types:

- Primary Baseline (Green bar)
- Actual Work (Red bar)
- Remaining Work (Blue bar)
- Critical Remaining Work (Yellow bar)
- Milestone (Diamond symbol)
- Summary (Arrow symbol)













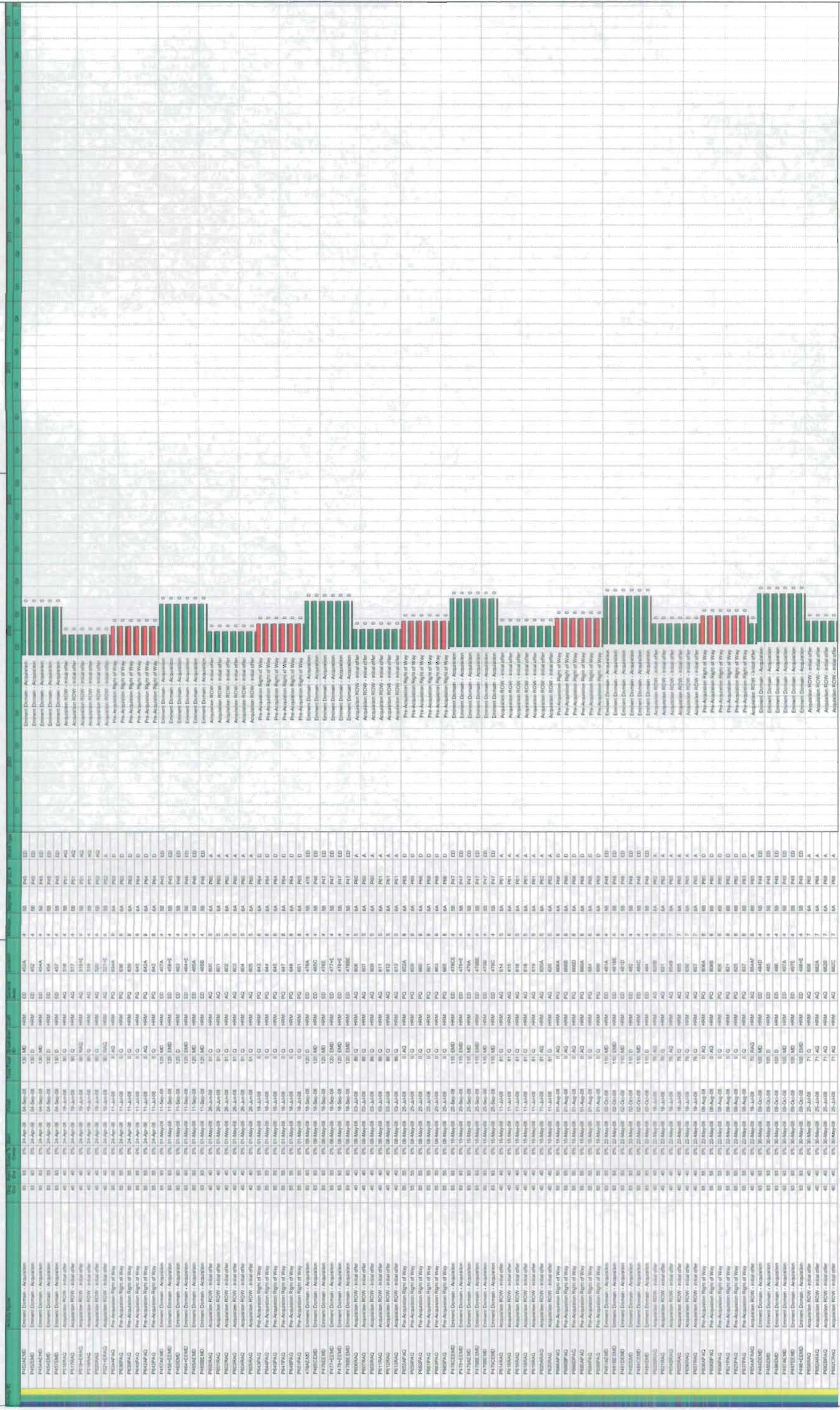








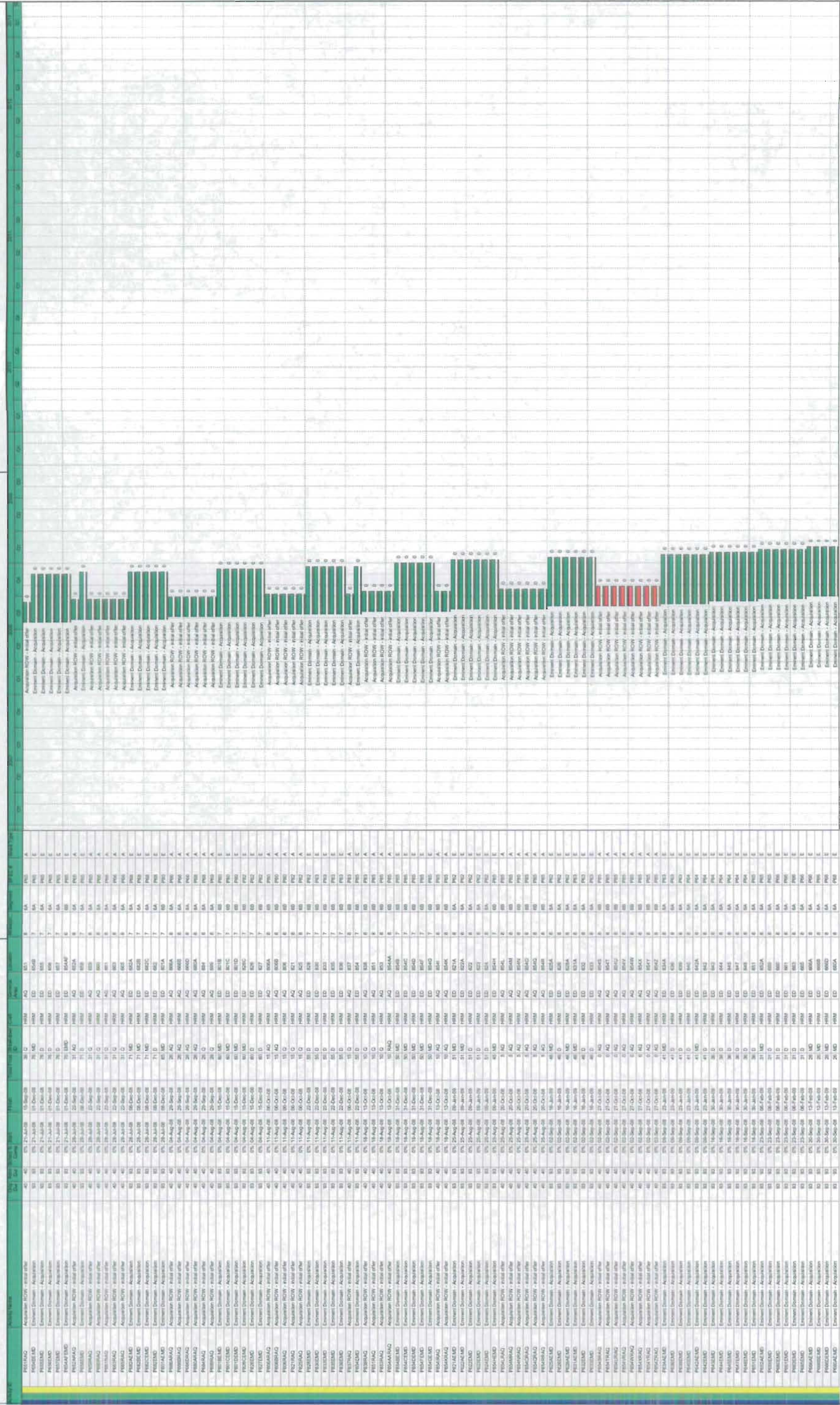




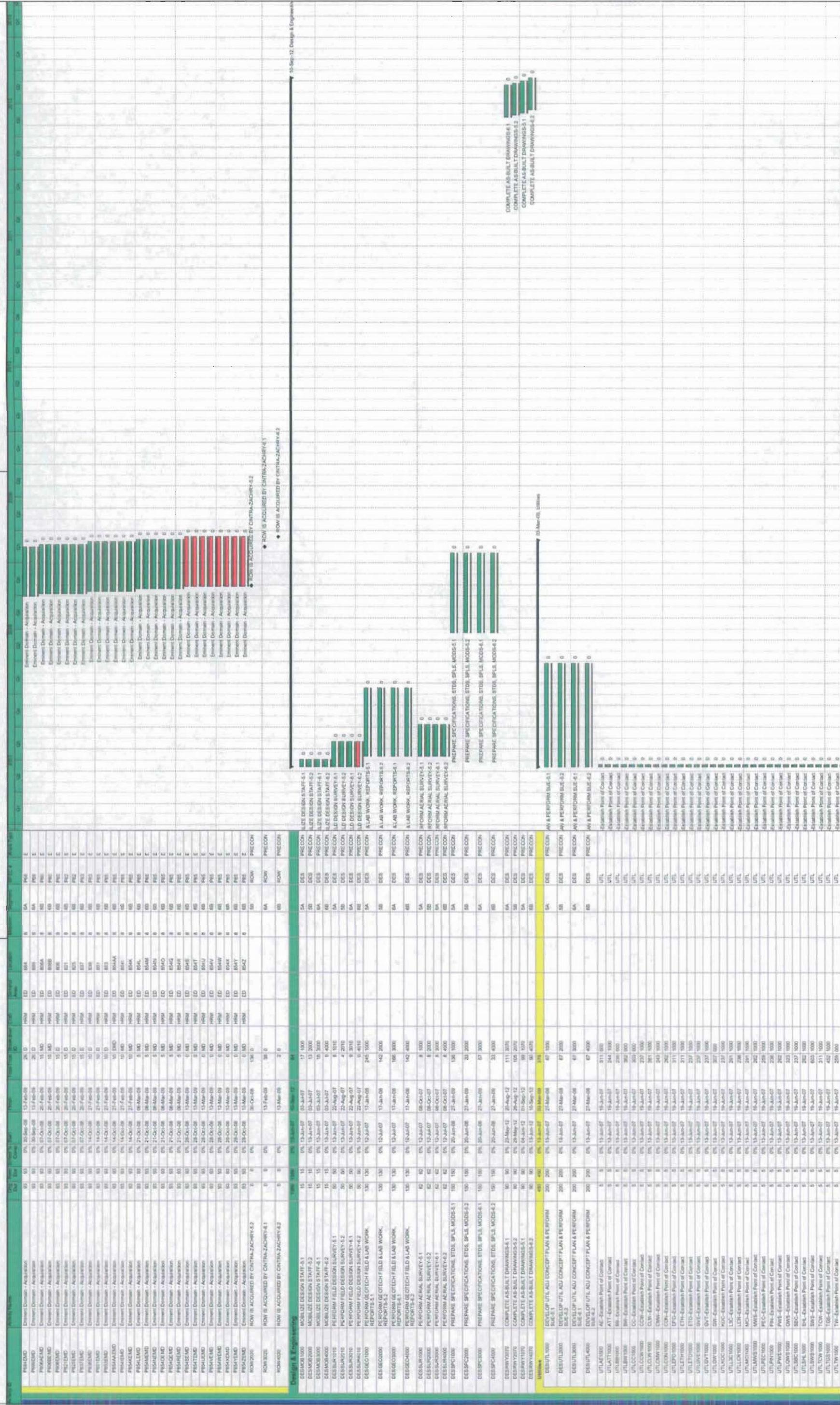




































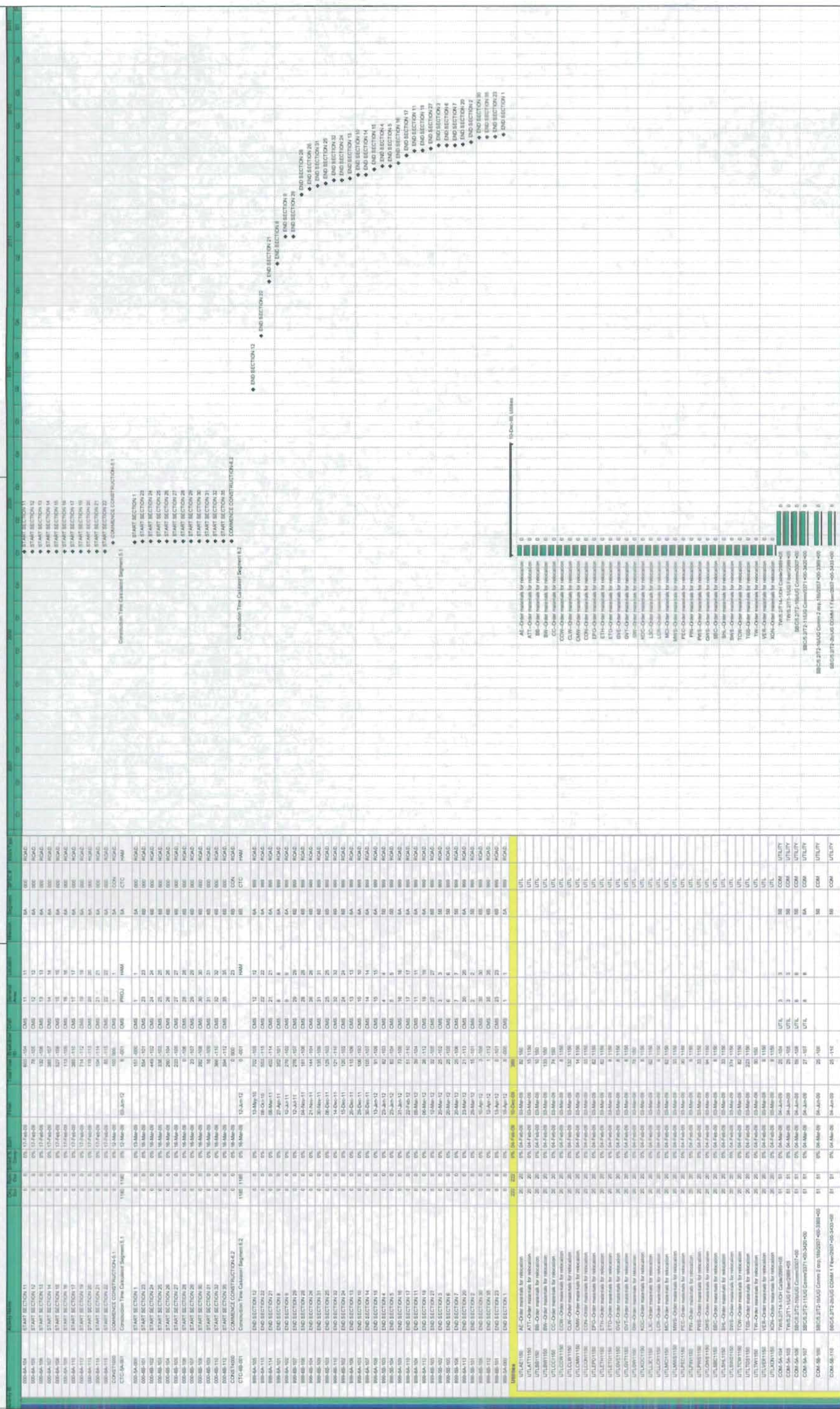
















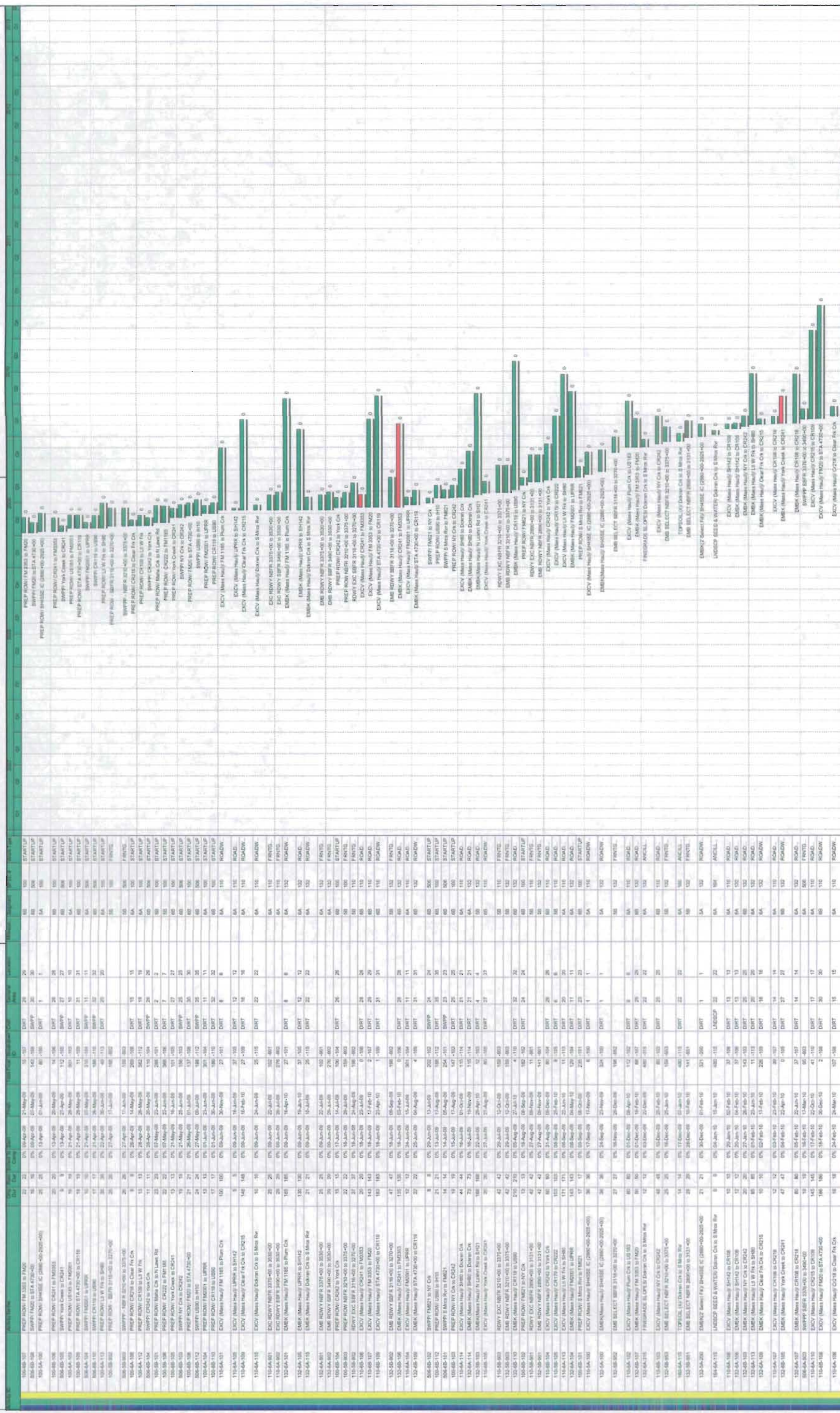






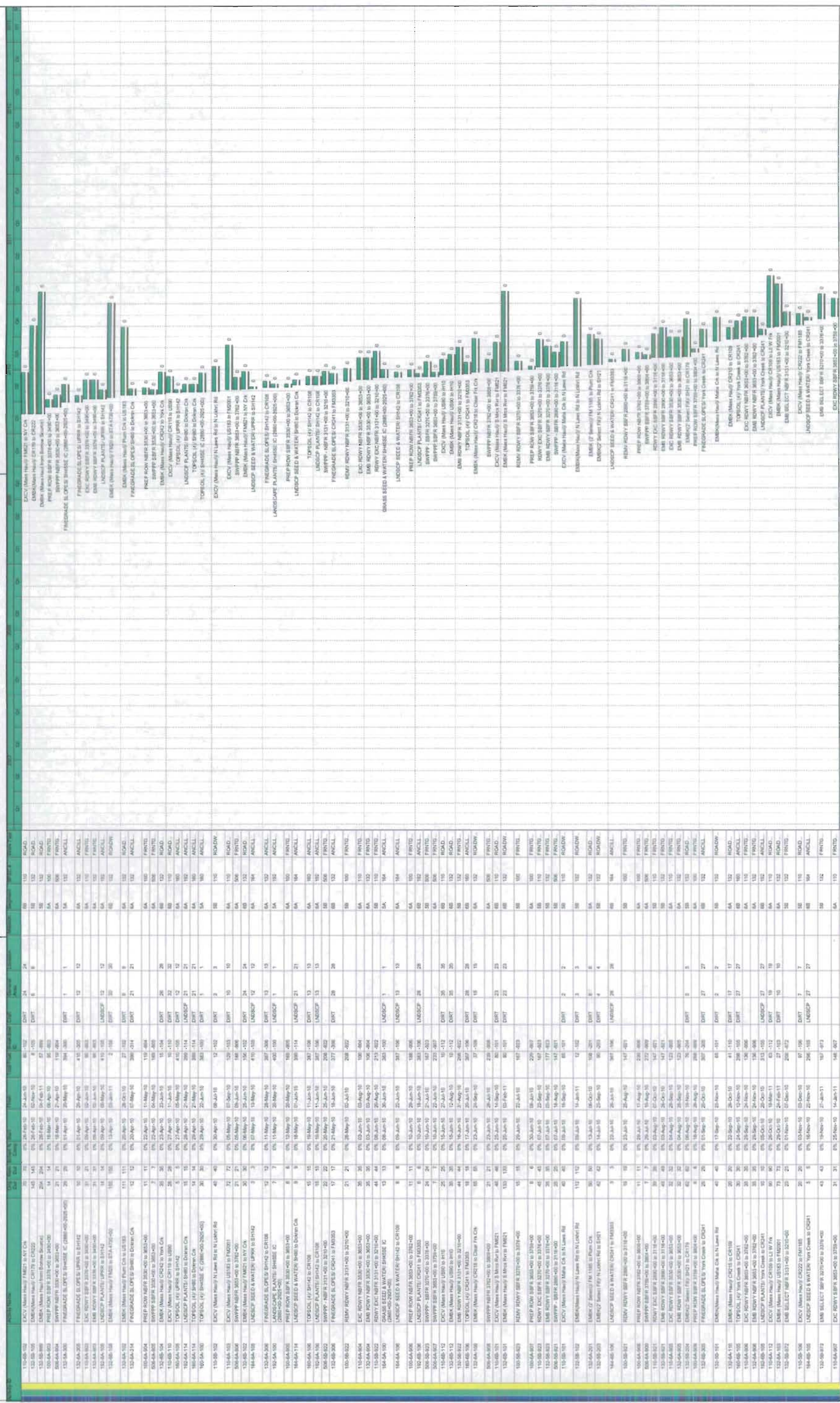






█ Primary Baseline  
█ Actual Work  
█ Remaining Work  
█ Critical Remaining Work  
█ Milestone  
█ Summary









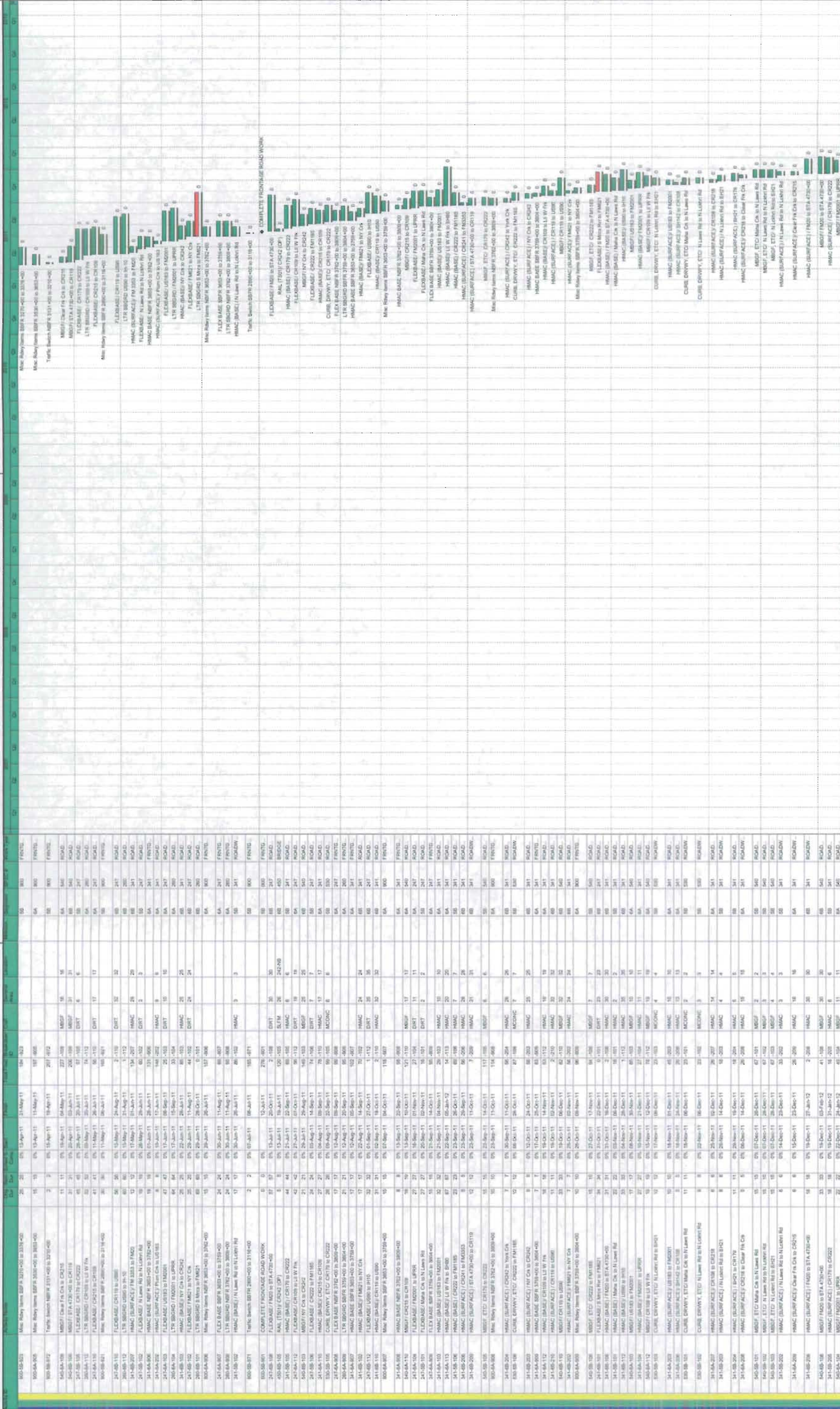












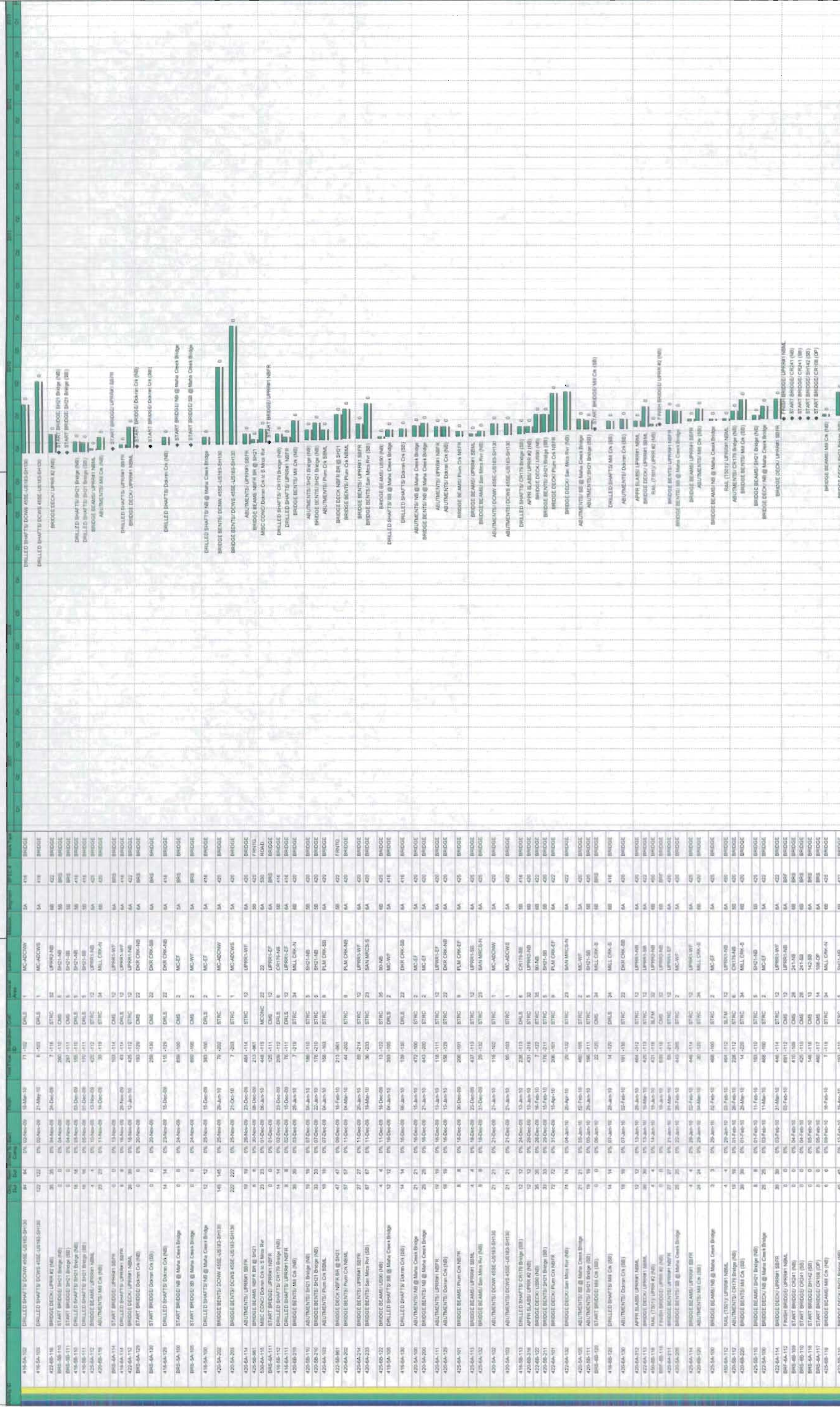




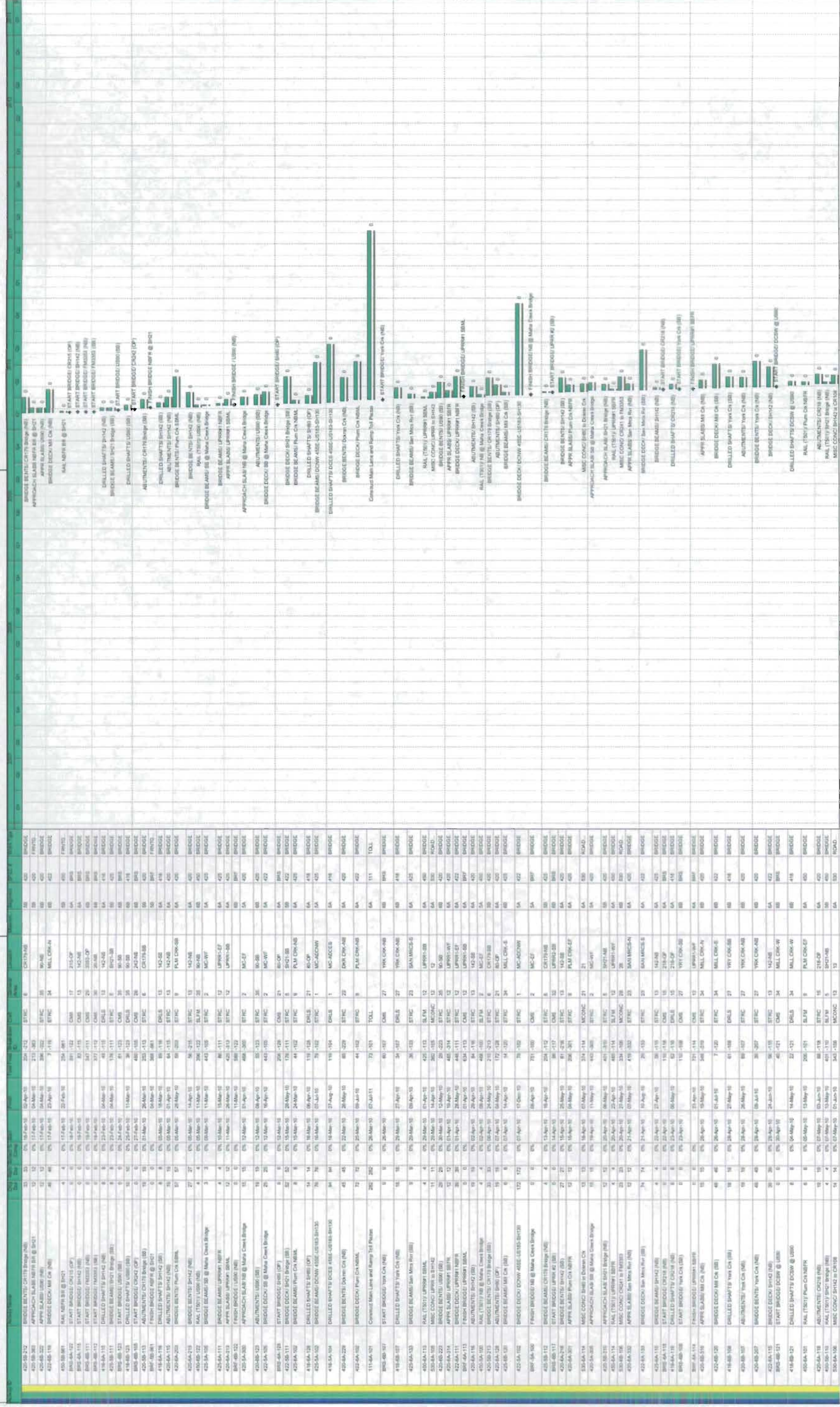












█ Primary Baseline  
█ Actual Work  
█ Remaining Work  
█ Critical Remaining Work  
█ Milestone  
█ Summary







