

Frequently Asked Questions (FAQs)

1. What is the MUTCD?

The Federal Highway Administration (FHWA) publishes the Manual on Uniform Traffic Control Devices (MUTCD), which defines the federal standard for all traffic control devices installed on any street, highway, bikeway, or private road open to public travel. The purpose of the MUTCD is to set minimum standards, provide guidance, and ensure uniformity of these devices, which include signs, signals, and pavement markings, to promote highway safety and efficiency on the Nation's streets and highways. The MUTCD standardizes all traffic control devices and ensures they are visible, recognizable, understandable, and necessary for road users.

2. Where can I find information about the new federal MUTCD?

Please visit: [Manual on Uniform Traffic Control Devices \(MUTCD\) - FHWA \(dot.gov\)](https://www.fhwa.dot.gov/mutcd/)

3. What is the TMUTCD? Why update it?

The Texas Manual on Uniform Traffic Control Devices (TMUTCD) is revised from the federal MUTCD as necessary to conform to Texas state law. It must be approved and adopted by the Texas Transportation Commission per Texas Transportation Code § 544.001.

Per the Code of Federal Regulations (23 CFR § 655.603 (b)), the new TMUTCD must be adopted within two years from the effective date of the new federal MUTCD. It must be in substantial conformance with the federal MUTCD, as determined by FHWA. To be in substantial conformance, Texas must adopt, at a minimum, all standard statements in the federal MUTCD. Guidance statements must also be adopted except where satisfactorily justified by:

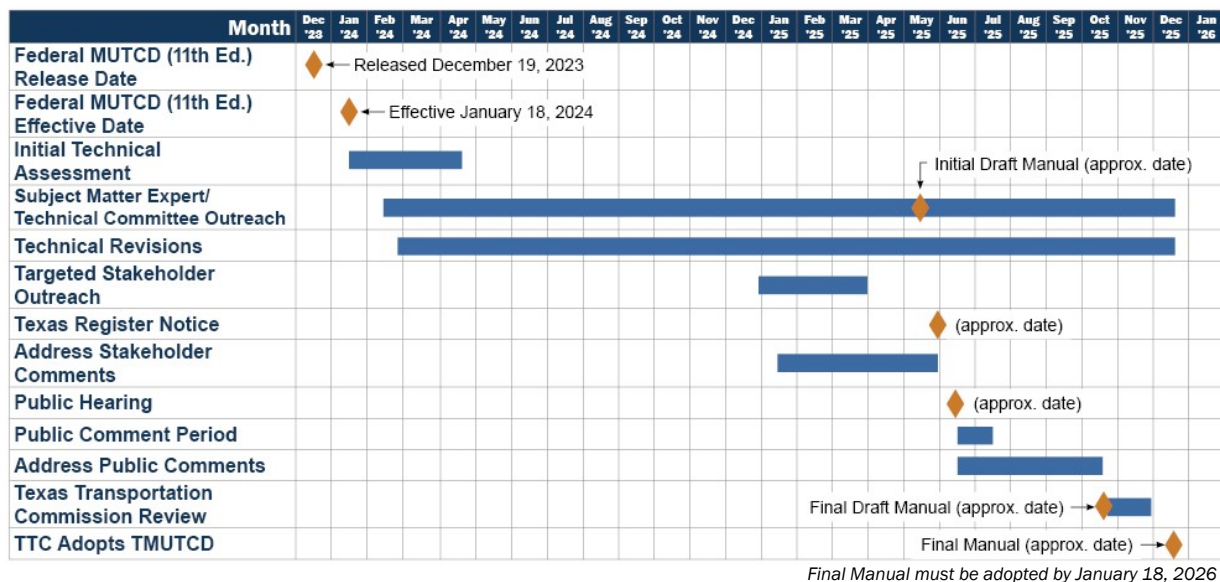
- Specific conflicting State laws
- Documented engineering study
- Engineering judgment

4. Which MUTCD is in effect in Texas right now?

The current version of TMUTCD is Revision 2 of the 2011 TMUTCD that was adopted on September 18, 2014, became effective on October 9, 2014, and **remains effective until the new TMUTCD is adopted.**

5. When will the revised TMUTCD be available?

The new TMUTCD must be adopted within two years from the effective date of the new federal MUTCD. The new federal MUTCD was released on December 19, 2023, and became effective on January 18, 2024. The 24-month timeline for the TMUTCD revision is presented below.



6. What is the legal status of the TMUTCD?

The TMUTCD is approved as the state standard for designing, applying, and planning traffic control devices in Texas. The TMUTCD is adopted by the Texas Transportation Commission per Texas Transportation Code § 544.001.

7. Are the figures, tables, and illustrations in the TMUTCD standards, guidance, or options?

Figures and tables, including the notes contained therein, supplement the text, and may constitute a standard, guidance, option, or support. The user needs to refer to the appropriate text to classify the nature of the figure, table, or note contained therein. For example, the text may state that a sign shall be located as shown in Figure X-XX. The portion of that figure that is referred in the text as being a "shall" condition would thus be a standard, even though other portions of the figure may illustrate other things that are not standards. The terms Standard, Guidance, Option, and Support are defined in the TMUTCD Introduction.

8. Does the TMUTCD contain information about patented devices or copyrighted materials?

The TMUTCD contains provisions governing the design and use of types of devices, not individual products. The TMUTCD does not include any copyrighted or patented devices. All types of devices shown or described in the TMUTCD or included in an



FHWA experimentation are in the public domain. They are available for reproduction without prior approval. The only exception is the Interstate route sign design, which is copyrighted by American Association of State Highway and Transportation Officials (AASHTO) and reproduction of which must be approved by AASHTO.