



Mobility35 GEC Services Austin District

Pre-RFP Meeting
February 2, 2024

Revised





- Thank you for coming
- Please save questions for after the presentation



1	Introductions	PEPS
2	Procurement Process	PEPS
3	Preclusions/Restrictions	PEPS
4	Solicitation Timeline (Tentative)	PEPS
5	Program Overview	Austin District
6	Next Steps/Q&A	Austin District and PEPS



- PEPS Austin Service Center Procurement Engineer
 - Harry Pan, P.E.
- PEPS Austin Service Center Procurement Support:
 - Charles K. Davidson, P.E., CTCM – PEPS Austin Service Center Director
 - Patricia Litchfield
 - Adrianna Perryman
 - Todd Speck, P.E ., CTCM.



PLEASE - Do NOT Contact the CST Members

- Consultant Selection Team members:
 - Aslan Zarafshan, P.E.
 - Barry Stribling
 - Heather Seamon
 - Tommy Abrego, P.E.
 - Megan Dutton, P.E.



1	Introductions	PEPS
2	Procurement Process	PEPS
3	Preclusions/Restrictions	PEPS
4	Solicitation Timeline (Tentative)	PEPS
5	Program Overview	Austin District
6	Next Steps/Q&A	Austin District and PEPS



One (1) Specific Deliverable Contract without Work Authorizations

FEDERAL FUNDS

DBE GOAL

- 12.5%

FEDERAL PROCESS WITH INTERVIEWS

- Solicitation – The request for proposal (RFP)
- Response – A written proposal
- Short List – Based on the proposal scores
- Interviews
- Selection – Based on the interview scores



Other Key Items

- RFP Screening
 - Follow the RFP and submit all completed, applicable documents required
- Proposal Evaluation
 - Short list based on proposal scores
- Interview Contract Guide (ICG)
 - Shortlisted firms will receive the ICG that outlines the process, presentation topics, and scoring criteria
- Negotiations
 - Hourly Labor Rates, Unit Cost, ODE
 - Level of Effort



Non-Listed Work Categories

➤ No NLC anticipated.

➤ Reminders:

- NLC requirements change procurement to procurement
- NLCs are pass/fail. Demonstrate how you meet minimum requirements
- Make sure to show months/years of experience for each project worked



Work Categories

1.5.1	Feasibility Studies
1.7.1	Traffic Demand Modeling
1.8.1	Public Involvement
2.1.1	Traffic Noise Analysis
2.2.1	Air Quality Analysis
2.4.2	Clean Water Act Sec. 404 Permits
2.5.1	Geological Assessment for Edwards Aquifer Recharge Zone
2.7.1	Sec. 4(F)/6(F) Evaluations
2.7.2	Historic Sites Sec. 4(f) Evaluations
2.10.1	Archaeological Surveys, Doc., Excavation, Testing Rpts
2.12.1	Socio-Economic & Environmental Justice Analysis
2.13.1	Hazardous Materials Initial Site Assessment
2.14.1	Environmental Document Preparation
2.15.1	Historical Research of Extant Bldgs, Struct, Landsc., & Obj.



Work Categories

3.2.1	Route Studies & Schematic Design
3.7.1	Traffic Operational Analysis
4.2.1	Roadway Design
4.4.1	Freeway Interchanges
4.5.1	Constructability Review
4.6.1	3-D Visualization and Animation Services
5.2.1	Bridge Design
5.3.1	Multi-Level Interchange Design
5.5.1	Bridge & Non-Bridge Class Culvert and Inlet Design
5.6.1	Structural Engineering for Overhead Sign Supports
6.6.1	Assessment and Preservation of Common Bridge Types
7.1.1	Traffic Engineering Studies
7.5.1	Intelligent Transportation System



Work Categories

8.1.1	Signing, Pavement Marking & Channelization
8.2.1	Illumination
8.3.1	Signalization
9.3.1	Pedestrian Facility Design
9.3.2	Accessibility Design
9.4.1	Bikeway Design
10.1.1	Hydrologic Studies
10.2.1	Roadway Hydraulic Design
10.3.1	Bridge Hydraulic Design
10.8.1	FEMA Regulations and Permits
11.7.1	Construction Schedule Support- Relating to Scheduling of Roadway Design
11.8.1	Construction Schedule Support- Relating to Construction Management of Projects Including Bridges or Multi-level Interchanges



Work Categories

11.10.1	Construction Record Keeper
14.5.1	Evaluation & Design of Geotechnical Related Structures
16.3.1	Landscape Architecture
18.3.1	Utility Adjustment Coordination
18.4.1	Utility Engineering
18.6.1	Utility Management & Coordination Oversight
18.7.1	Utility Relocation Design
21.1.1	Right of Way (ROW) Acquisition Services
23.2.1	Alternative Delivery Design & Construction Support Engineer
23.8.1	Claims Analysis and Management
23.11.1	Plan Review
23.12.1	QA/QC Process Verification



RFP

What we are looking for in your proposal

Provide all completed documents in the Cover Page List of Attachments

Proposal Content developed to guide your proposal to focus on the needs for this contract

Always refer to the RFP for additional information to be posted at the time of RFP posting

Past-performance will be captured at the RFP

We are interested in selecting the most qualified consultant for the contract

Target your Proposal to the Proposal Content

Provide detailed examples and include challenges/lessons learned and innovation if utilized

Quality over Quantity

No key-word search; this is about your capabilities, experience, knowledge, and thought process



Interview and Contract Guide (ICG)

TxDOT will provide the following:

- Scope of work with technical requirements and qualifications required to provide the services of this contract
- Presentation Content
- Identify evaluation criteria
- Interview format
- Interview schedule

Typical Interview process

- TxDOT Introductions / Instructions
- Consultants begin with presentation based on the Proposal Content provided in ICG
- CST Break
- Questions and Answer Session
- The CST members individually score the interviews.
- The individual scores will be consolidated to determine the selected provider.



1	Introductions	PEPS
2	Procurement Process	PEPS
3	Preclusions/Restrictions	PEPS
4	Solicitation Timeline (Tentative)	PEPS
5	Program Overview	Austin District
6	Next Steps/Q&A	Austin District and PEPS



➤ Preclusions:

Contract No.	Prime Provider Name	Subprovider Name
14-2SDP5002	BGE, Inc.	
		Civilcorp, LLC
		H W Lochner, Inc. IEA, Inc.
14-2SDP5001	AtkinsRéalis (Atkins North America, Inc.)	
		Browne Engineering Partners, Corporation
		B2Z Engineering, LLC
		IEA Inc.
		Sam Construction Services, LLC
		RS&H, Inc.
		Lamb -Star Engineering, LLC
		Bridgefarmer & Associates, Inc.



➤ Preclusions:

Contract No.	Prime Provider Name	Subprovider Name
14-OSDP5002	Half Associates, Inc.	
		Alliance-Texas Engineering Co. DBA
		Alliance Transportation Group, Inc.
		STV Inc. (CP&Y, Inc.)
		EDGE Engineering, PLLC
		Raba Kistner, Inc.
		WSP USA Environment & Infrastructure Inc. (Wood Environment & Infrastructure Solutions, Inc.)



➤ Preclusion Appeals Process

- Prior to posting procurement
 - Email Martin L. Rodin, P.E.
 - Include this solicitation No. 14-4SDP5004
 - Explain rationale for removal from preclusion list
- After posting procurement
 - Formal appeal outlined in [Title 43 TAC § 9.7](#), see for exact details
 - Mail letter to Marc Williams, include above info
 - Procurement process is not paused

➤ Core Team Restrictions

- None anticipated



1	Introductions	PEPS
2	Procurement Process	PEPS
3	Preclusions/Restrictions	PEPS
4	Solicitation Timeline (Tentative)	PEPS
5	Program Overview	Austin District
6	Next Steps/Q&A	Austin District and PEPS



Task	*Date
Pre-Solicitation meeting	Today
RFP posts in Bonfire	Weeks of Mar 4 – Mar 18
Proposal due	Weeks of Apr 1 – Apr 15
Shortlist/Interview Guide	Weeks of Apr 8 – Apr 22
Interviews	Weeks of Apr 29 – May 13
Provider Selection	Weeks of May 6 – May 20
Contract Execution	September 2024

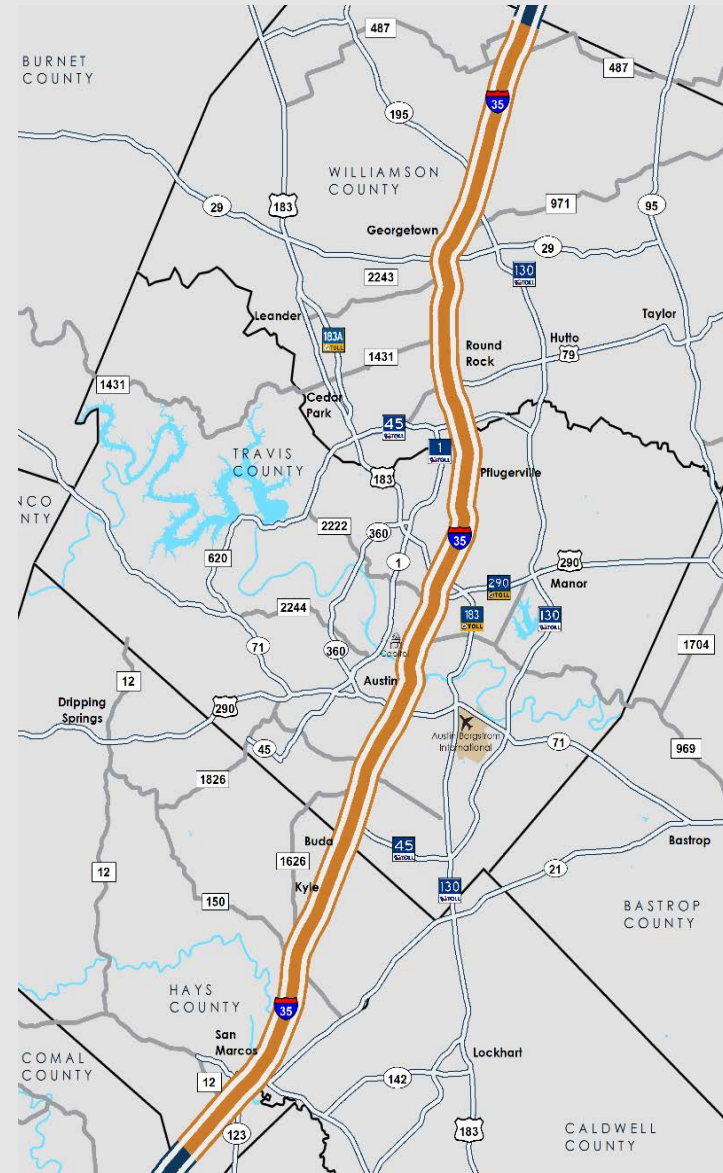
*** All dates subject to change**



1	Introductions	PEPS
2	Procurement Process	PEPS
3	Preclusions/Restrictions	PEPS
4	Solicitation Timeline (Tentative)	PEPS
5	Program Overview	Austin District
6	Next Steps/Q&A	Austin District and PEPS



- A region-wide effort to improve safety and mobility on 79 miles of I-35 through Williamson, Travis, and Hays counties including five of the top 100 most congested roadways in Texas.
- Constraints to improving I-35 include:
 - Highly constrained urban environment
 - Need to maintain mobility during construction
 - Need for east/west connectivity
 - Diverse interests
 - Funding
- 30+ projects in Mobility35 program including I-35 Capital Express as part of the region's on-going transportation system upgrade
 - \$9B in construction cost for active or future projects
 - 35+ contracts totaling ~400M in environmental and design
- Extensive public involvement





- Optimize the existing roadway
- Enhance safety
- Increase capacity
- Minimize need for additional right of way
- Manage traffic better
- Improve east/west connectivity
- Improve compatibility with neighborhoods
- Enhance bicycle, pedestrian, and transit-user options



Lady Bird Lake Project



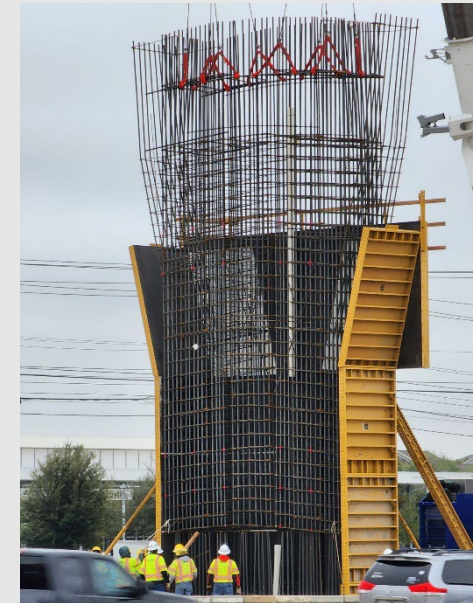
Public Involvement



Do...	Don't...
<ul style="list-style-type: none">• Own program and projects as your own	<ul style="list-style-type: none">• Let issues linger at TxDOT
<ul style="list-style-type: none">• Integrate stakeholder, public, and environmental input into design	<ul style="list-style-type: none">• Neglect project history (read My35.org/Capital website)
<ul style="list-style-type: none">• Manage big picture goals, milestones, and risks	<ul style="list-style-type: none">• Expect traditional, sequential design process
<ul style="list-style-type: none">• Expect high-level of communication and coordination with State	<ul style="list-style-type: none">• Consider design specifications to be final
<ul style="list-style-type: none">• Bring recommendations or solutions	<ul style="list-style-type: none">• Only identify problems
<ul style="list-style-type: none">• Proactively implement QA/QC process	<ul style="list-style-type: none">• Let review comments linger
<ul style="list-style-type: none">• Actively communicate	<ul style="list-style-type: none">• Passively communicate



- Williamson County:
 - 2 projects in schematic/environmental
- Travis County:
 - 2 projects in construction
 - 6 project in PS&E
- Hays County:
 - 1 project in construction
 - 0 projects in PS&E
 - 1 project in schematic/environmental



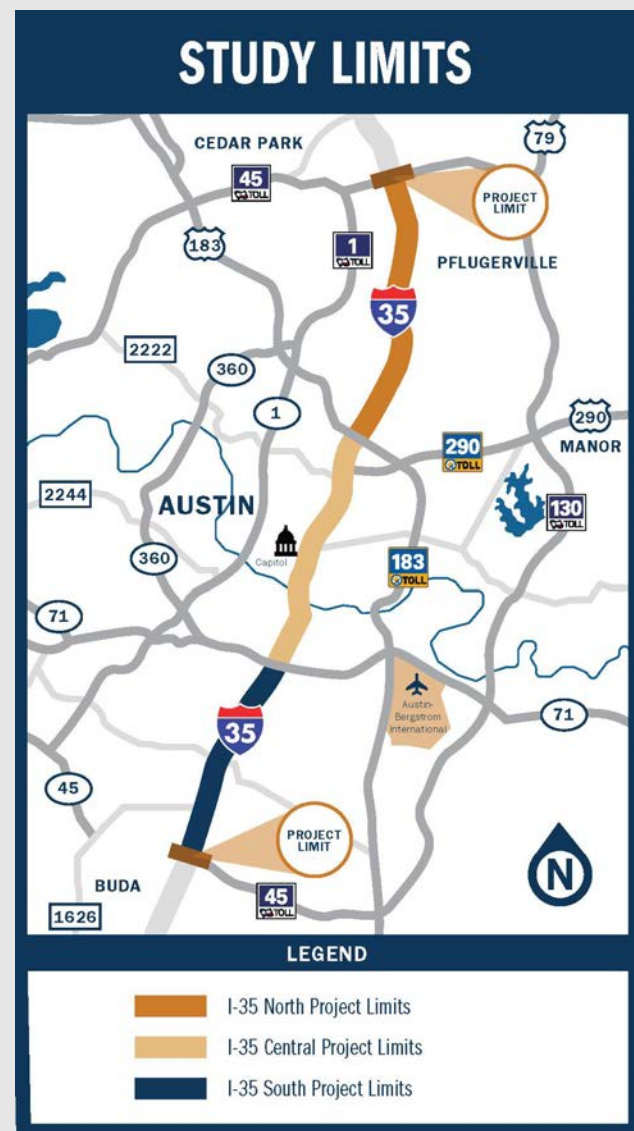
<http://www.my35.org/capital>



Mobility35 - RoadMap Phasing											
Project		Cost (M) - Mult Sources				Schem/Env		PS&E		Construction	
CSJ	Name	Cost (M)	Bi-Monthly Report (CST Est.)	From Roadmap	TxConnect (CST Est.)	Begin	Finish	Begin	Finish	Begin	Finish
0015-09-178; 0015-09-183	SH29 to SH45 (0015-09-178) ***	2,800.0	2,800.0	1,970.0	425.7	4/1/2021	7/1/2025	7/1/2025	1/7/2030	1/7/2030	1/7/2033
0015-10-062	Capital Express - North	619.3		500.0	627.8	Completed	Completed	Completed	Completed	8/1/2022	2/1/2029
0015-13-077	Capital Express - South	560.9	560.9	506.0	506.3	Completed	Completed	Completed	Completed	3/1/2023	2/1/2028
0016-03-114	S. of SH 80 to N. of RM 12 (SH 123)	86.9	81.2	81.2	86.9	Completed	Completed	Completed	Completed	4/1/2021	3/1/2025
0016-03-113	SH 123 to Posey Road	245.9	245.9	411.7	219.6	7/1/2018	TBD	TBD	TBD	9/1/2033	9/1/2036
No CSJ (PEL Study)	Austin to San Antonio Link Study	1,500 to 2,000	N/A	N/A	N/A	TBD	TBD	TBD	TBD	TBD	TBD
***I-35 Project in Williamson County is targeted for Design Build											
Note: This is a current snapshot and subject to change											



- Study area in Austin metro area within Travis County between SH 45N and SH 45SE
- Non-tolled, HOV managed lanes
- Three independent projects
 - North - SH 45 North to US 290 East
 - Central - US 290 East to SH 71/Ben White Boulevard
 - South - SH 71/Ben White Boulevard to SH 45 Southeast





I-35 Capital Express North

- SH 45 North to US 290 (11.5 miles)
- 1 managed lane each direction
- Reconstructing bridges and interchanges
- 5 miles of shared-use path
- \$606 million
- Start – March 2023

I-35 Capital Express South

- Ben White Boulevard to SH 45 SE (8 miles)
- 2 managed lanes each direction
- 2 miles of SH I-35 intersection bypass lanes
- Shared-use path
- \$548 million
- Start – November 2022





- **Limits:** US 290 East to SH 71/Ben White Boulevard
- **Length:** 8 miles
- **Project Details:**
 - Construct two non-tolled managed lanes in each direction.
 - Reconstruct ramps, bridges and intersections.
 - Improve frontage roads.
 - Enhance bicycle and pedestrian paths.
 - Accommodate transit routes.
- **Estimated construction cost:** \$4.5 billion
- **Anticipated construction start:** Mid-2024

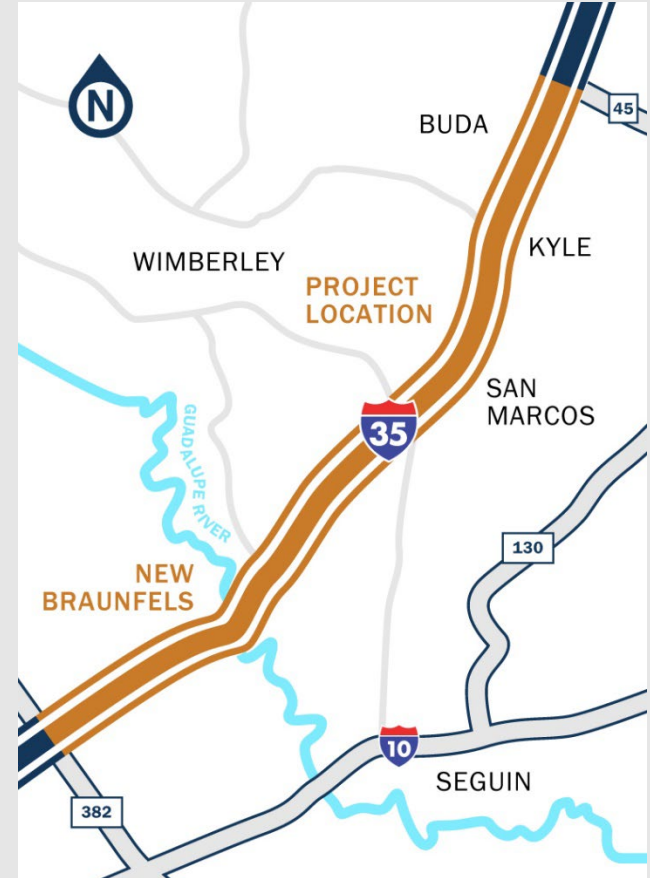




- **Limits:** SH 45 North to SH 29
- **Length:** 10 miles.
- **Project Details:**
 - Improve safety and mobility.
 - Construct 2 non-tolled managed lanes in each direction.
 - Improve intersections, reconstruct bridges and relocate entrance and exit ramps throughout the project area.
- **Project Timeline:** The timeline for detailed design finalization and construction has not yet been determined.



- **Limits:** SH 45 Southeast to CR 382 (Cibolo Valley Drive).
- **Length:** 46 miles.
- **Project Details:**
 - Focus on how to connect I-35 Capital Express South project in Travis County to the I-35 Northeast Expansion project (NEX) in Comal County.
 - PEL study will identify projects that can be further developed in the schematic and environmental review phase.
 - Open House Meetings: February 2024.





- Specific Deliverable Contract with Work Authorizations
- Number of contracts: 1
- Anticipated Duration: 5 years, Sept 2024 through December 2029



- GEC staff will be a combination of co-located and off-site personnel
- Co-located staff will be located at the TxDOT- Austin District Offices
- Field rates will be used for those co-located staff provided space at the TxDOT Austin District
- Anticipated co-located leads and TxDOT point of contact:

Position	TxDOT Point of Contact
Program Manager	Mobility35 Program Manager
Deputy Program Manager	Mobility35 Program Manager
Planning/Preliminary Engineering	Advanced Project Development (APD) Director and Staff



- Program Management
 - Project Management Plan
 - Quality Control Plan
 - Program Tools:
 - Progress report
 - Deliverables table
 - Road Map
 - Leadership dashboards
 - Commitments tool
 - Expenditures forecast/cash flow analysis
 - Program schedule
 - Document control
 - SharePoint development and maintenance



- Program Coordination
 - Department Coordination:
 - Agency Partners (CAMPO, Capital Metro, Municipalities, Counties, etc.)
 - Texas Clear Lanes
 - Top 100 Congestion List
 - FHWA Major Projects (PMP, IFP, CER)
 - Stakeholders
 - Other Special Requests
 - District Coordination:
 - Area Office Support
 - Project portfolio updates
 - Project schedule updates
 - Permitting and Developer requests
 - TxDOTCONNECT updates



- Preliminary Engineering
 - General Project Development Engineer (PDE) contract management and oversight
 - Feasibility study oversight
 - Schematic engineering oversight, coordination, and review
 - Design criteria development and review
 - Design exception review
 - Cost estimate review
 - IAJR coordination
 - Traffic evaluations, analysis, and projections oversight
 - Subject matter management and coordination for structures, railroad, bicycle/pedestrian, hydrology/hydraulics, pavement, aesthetics/maintenance, etc.
- Environmental
 - Environmental document oversight and reviews
 - Environmental document support services
 - Re-evaluations coordination
 - NEPA Public Involvement oversight



- PS&E Development
 - General PDE contract management and oversight
 - PS&E oversight and coordination
 - Constructability reviews
 - Design criteria development and review
 - Design review coordination
 - Cost estimate review
 - Ready to let status tracking and coordination
 - Project commitments tracking and coordination
- Right-of-way
 - Right-of-way acquisition management and oversight
 - Field surveying support
- Utilities
 - Utility coordination and engineering management and oversight
 - Utility agreement review



- Public Information (PI)
 - Program-wide Communications Plan
 - Program-level Public Involvement and Information Activities
 - Program and Project Websites
 - Project groundbreaking/ribbon cuttings
 - Public involvement for active construction projects including lane closure notifications
- Mobility Coordination (MC)
 - Lane closure notification system implementation and maintenance
 - Participate in contractor meetings for active construction projects
 - Communication of traffic impacts
- Traveler Information System (TIS)
 - Lane closure preparation, monitoring and evaluation for traffic management
 - Traffic data management
- Construction Communications Assistance Team (CCAT)
 - Combination of PI, MC, and TIS



- Alternative Delivery Support
 - Implement strategies for alternative delivery project to advance procurement readiness
 - Facilitate risk workshops and risk matrix maintenance and updates
 - Reference Information Documents (RID) maintenance
 - Cost estimate development and review
 - Procurement support, if needed



- Keep the program on track in part by facilitating weekly meetings with Program Manager and team meetings with GEC staff.
- Emphasis on GEC as an extension of TxDOT staff to facilitate program coordination and project execution
- Develop and manage:
 - Action items
 - Program and project risks
 - Decisions and commitments
 - Meeting agendas and minutes
- Utilize program tools:
 - Weekly status report on active schematic and PS&E projects
 - Program Master Table to track project cost and funding information
 - Program schedule as a roll-up of schedules received from project development engineers
 - Deliverables table
 - Cash flow analysis
 - Document control/SharePoint
- **Innovation**



Name	Website
My35 – Capital Region	http://www.my35.org
Mobility35 – Capital Area Construction Information	https://my35construction.org
PEPS Website (Procurement Information)	https://www.txdot.gov/business/consultants/architectural-engineering-surveying.html



1	Introductions	PEPS
2	Procurement Process	PEPS
3	Preclusions/Restrictions	PEPS
4	Solicitation Timeline (Tentative)	PEPS
5	Program Overview	Austin District
6	Next Steps/Q&A	Austin District and PEPS



- Meeting documents posted tomorrow
- Questions may be submitted to:
Harry Pan, P.E.
Harry.pan@TxDOT.gov
by noon, Tuesday, February 6, 2024
- Questions received and answers posted Thursday, February 8, 2024



Thank you for attending the Pre-Solicitation meeting