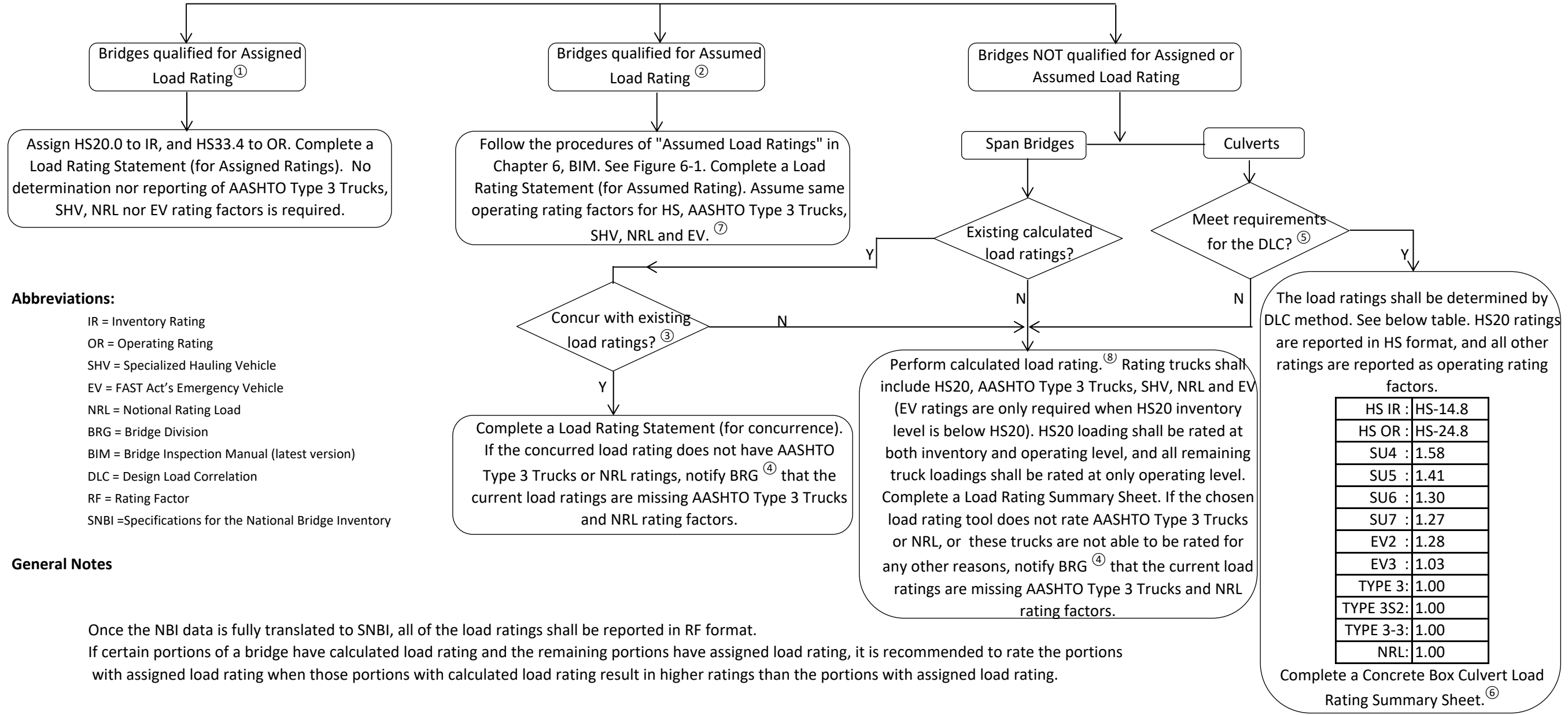


Load Rating



Abbreviations:

- IR = Inventory Rating
- OR = Operating Rating
- SHV = Specialized Hauling Vehicle
- EV = FAST Act's Emergency Vehicle
- NRL = Notional Rating Load
- BRG = Bridge Division
- BIM = Bridge Inspection Manual (latest version)
- DLC = Design Load Correlation
- RF = Rating Factor
- SNBI = Specifications for the National Bridge Inventory

General Notes

Once the NBI data is fully translated to SNBI, all of the load ratings shall be reported in RF format.
 If certain portions of a bridge have calculated load rating and the remaining portions have assigned load rating, it is recommended to rate the portions with assigned load rating when those portions with calculated load rating result in higher ratings than the portions with assigned load rating.

① FHWA Assigned Load Rating Memo, Dated 09/29/2011, and Chapter 6, TxDOT BIM
 ② Section 1 Chapter 6, TxDOT Bridge Inspection Manual
 ③ Old TBLRP (ASD) load ratings performed after 2011 shall not be concurred for steel or concrete components.
 ④ Send an email to LR_Needed@txdot.gov. Start the subject line with "Missing AASHTO TYPE 3 and NRL rating factors - NBI#"
 ⑤ Section of "Concrete Box Culvert Load Rating by Design Load Correlation" in Chapter 6, TxDOT BIM.
 ⑥ If a concrete box culvert bridge has an expansion slab or it contains non-culvert units, those non-culvert units shall be evaluated by the most applicable of the three load rating methods: Assigned, Assumed, or Calculated ratings. Report the controlling load rating.
 ⑦ For example, if inventory rating is assumed to be HS15 (RF=0.75) and operating rating is assumed to be HS20 (RF=1.00), AASHTO Type 3 Trucks, NRL, SHV and EV operating rating factors shall be 1.00. If inventory rating is assumed to be HS10 (RF=0.50) and operating rating is assumed to be HS15 (RF=0.75), AASHTO Type 3 Trucks, NRL, SHV and EV operating rating factors shall be 0.75.
 ⑧ If a routine inspection team is not capable of performing a load rating due to complexity of the bridge, send an email to LR_Needed@txdot.gov. Start the subject line with "LR Needed - NBI#"