



PreRFP Meeting

14-4SDP5003

Schematic, Environmental, and
PS&E

Austin District

Wednesday, November 15, 2023





- Thank you for attending
- Questions may be submitted in the meeting chat or email PEPS
- The draft scope is posted online
- This presentation, attendance sheet, and relevant questions with responses will also be posted online



1	Introduction	PEPS
2	Procurement Process	PEPS
3	Preclusions/Restrictions	PEPS
4	Solicitation Timeline (Tentative)	PEPS
5	Project Overview	Austin District
6	Next Steps/Q&A	Austin District and PEPS



Please do NOT Contact CST Members

- Consultant Selection Team
 - Solomon Bekele, P.E., PMP
 - Jubal Grubb
 - Justin Luna, E.I.T.
 - Arthur Porto, P.E.
 - Addisu Tilahun, P.E.



- PEPS Austin Service Center Procurement Engineer
 - Todd M. Speck, P.E., CTCM
Todd.Speck@TxDOT.gov
512-560-2084

- PEPS Austin Service Center Procurement Support
 - Charles K. Davidson, P.E., CTCM – Service Center Director
 - Harry Pan, P.E.
 - Marialyce Luckey, CTCM
 - Patricia Litchfield
 - Adrianna Perryman



1	Introduction	PEPS
2	Procurement Process	PEPS
3	Preclusions/Restrictions	PEPS
4	Solicitation Timeline (Tentative)	PEPS
5	Project Overview	Austin District
6	Next Steps/Q&A	Austin District and PEPS



- This contract is to develop design schematics, environmental documents, and plans, specifications, and estimates (PS&E) for the SH 29 corridor from CR 258, Burnet County to IH 35, Williamson County in the Austin District.
- Draft scope is posted online



One specific deliverable contract.

FEDERAL FUNDS

DBE GOAL

13.5%

Preliminary,
final goal

TBD

FEDERAL PROCESS WITH INTERVIEWS

- Solicitation – request for proposal (RFP)
- Response – proposal submitted within Bonfire
- Short List – based upon proposal scores
- Interview
- Selection – based upon interview scores
- Negotiations
- Contract Execution



Other Key Items

- RFP Screening
 - Follow the RFP and submit all completed, QCed, applicable documents required
- Proposal Evaluation
 - Short list based on proposal scores
- Interview Contract Guide (ICG)
 - Shortlisted firms will receive the ICG which outlines the process, presentation topic, and scoring criteria
- PEPS Negotiations Center
 - Hourly Labor Rates, Unit Cost, ODEs
- Austin District Negotiations
 - Scope level of effort



Standard Work Categories

1.5.1	Feasibility Studies
1.7.1	Traffic Demand Modeling
1.8.1	Public Involvement
1.9.1	Geographic Information System (GIS) and Data Analysis
2.1.1	Traffic Noise Analysis
2.2.1	Air Quality Analysis
2.3.1	Wetland Delineation
2.3.2	Conditional/Functional Assessment
2.4.1	Nationwide Permit
2.4.2	Clean Water Act Sec. 404 Permits
2.4.3	U.S. Coast G. & U.S. Army Corps Of Engr. Permits
2.5.1	Geological Assessment for Edwards Aquifer Recharge Zone
2.6.5	Protected Species Evaluations
2.6.6	USFWS/ National Marine Fisheries Service Consultation
2.7.1	Sec. 4(F)/6(F) Evaluations
2.7.2	Historic Sites Sec. 4(f) Evaluations
2.10.1	Archaeological Surveys, Doc., Excavation, Testing Rpts
2.12.1	Socio-Economic & Environmental Justice Analysis
2.13.1	Hazardous Materials Initial Site Assessment



Standard Work Categories

2.14.1	Environmental Document Preparation
2.15.1	Historical Research of Extant Bldgs, Struct, Landsc., & Obj.
2.15.2	Historical Surveys & Doc. of Bldgs, Struct, Landsc., & Obj.
3.2.1	Route Studies & Schematic Design
3.7.1	Traffic Operational Analysis
4.2.1	Roadway Design
4.5.1	Constructability Review
4.6.1	3-D Visualization and Animation Services
4.7.1	Traffic Safety Analysis
5.2.1	Bridge Design
5.5.1	Bridge & Non-Bridge Class Culvert and Inlet Design
5.6.1	Structural Engineering for Overhead Sign Supports
7.1.1	Traffic Engineering Studies
7.4.1	Traffic Control Systems Analysis, Design And Implementation
8.1.1	Signing, Pavement Marking & Channelization
8.2.1	Illumination
8.3.1	Signalization
8.4.1	ITS Control Systems Analysis, Design & Implementation
8.6.1	Rail-Highway Design



Standard Work Categories

9.2.1	Active Transportation Planning
9.3.1	Pedestrian Facility Design
9.3.2	Accessibility Design
9.4.1	Bikeway Design
10.1.1	Hydrologic Studies
10.2.1	Roadway Hydraulic Design
10.3.1	Bridge Hydraulic Design
10.5.1	Bridge Scour Evaluations And Analysis
12.4.1	Pavement Design Services
14.1.1	Soil Exploration
14.2.1	Geotechnical Testing
14.3.1	Transportation Foundation Studies
14.5.1	Evaluation & Design of Geotechnical Related Structures
15.1.1	Right of Way Surveys
15.2.1	Design Survey
15.2.2	Construction Survey
15.3.1	Aerial Photogrammetry
15.3.2	Terrestrial Photogrammetry
15.3.3	Terrestrial LiDAR



Standard Work Categories

15.3.4	Mobile LiDAR
15.3.5	Horizontal and Vertical Control
15.3.6	Airborne LiDAR
15.5.1	State Land Surveying
18.2.1	Subsurface Utility Engineering (Utility Eng. Investigation)
18.3.1	Utility Adjustment Coordination
18.4.1	Utility Engineering
19.3.1	Financial Plan Review and Development (Design-Bid-Build)

Non-Listed Work Categories

NLC	None anticipated
-----	------------------

➤ Reminders:

- WCs and NLCs subject to change
- NLC requirements change from procurement to procurement
- NLCs are pass/fail. Demonstrate how you meet minimum requirements
- Make sure to show months/years of experience for each project worked



Request for Proposals

Provide all required documents in the attachments

Proposal Content developed to guide your proposal to focus on the needs for this contract

Always refer to the RFP posted in Bonfire for all submittals required

Past-performance will be captured at the RFP

What we are looking for

We are interested in selecting the most qualified consultant for the contract

Target your Proposal to the Proposal Content

Provide detailed examples and include challenges/lessons learned and innovation if utilized

Quality over Quantity

No key-word search; this is about your capabilities, experience, knowledge, and thought process



Interview and Contract Guide (ICG)

TxDOT will provide the following

- Scope of work with technical requirements and qualifications required to provide the services of this contract
- Presentation Content
- Identify evaluation criteria
- Interview format
- Interview schedule

Typical Interview Process

TxDOT Introductions / Instructions

- Consultants begin with presentation based on the Proposal Content provided in ICG
- CST Break
- Questions and Answer Session
- Consultant's Concluding Remarks
- The CST members individually score the interviews
- The individual scores will be consolidated to determine the selected provider



1	Introduction	PEPS
2	Procurement Process	PEPS
3	Preclusions/Restrictions	PEPS
4	Solicitation Timeline (Tentative)	PEPS
5	Project Overview	Austin District
6	Next Steps/Q&A	Austin District and PEPS



- Preclusions
 - None anticipated

- Core Team Restrictions
 - None anticipated

- Preclusion Appeals Process
 - PRIOR to posting the RFP
 - Email Martin L. Rodin, P.E.
 - Include the solicitation No. 14-4SDP5003
 - Explain rationale for removal from preclusion list
 - AFTER posting the RFP
 - Formal appeal outlined in [Title 43 TAC § 9.7](#), see for exact details
 - Mail letter to TxDOT Executive Director, include above info
 - Procurement process is not paused



1	Introduction	PEPS
2	Procurement Process	PEPS
3	Preclusions/Restrictions	PEPS
4	Solicitation Timeline (Tentative)	PEPS
5	Project Overview	Austin District
6	Next Steps/Q&A	Austin District and PEPS



Task	Date
Pre-Solicitation meeting	November 15, 2023
RFP Posted on Bonfire	Weeks of Jan 1 – Jan 15
Proposal Due	Weeks of Jan 22 – Feb 5
Shortlist/ICG	Weeks of Jan 29 – Feb 19
Interviews	Weeks of Feb 12 – Feb 26
Provider Selection	By March 2024
Contract Execution	May 2024

All dates subject to change



1	Introduction	PEPS
2	Procurement Process	PEPS
3	Preclusions/Restrictions	PEPS
4	Solicitation Timeline (Tentative)	PEPS
5	Project Overview	Austin District
6	Next Steps/Q&A	Austin District and PEPS



The SH29 corridor and surrounding region has shown rapid growth and has a significant number of crash hot spots.

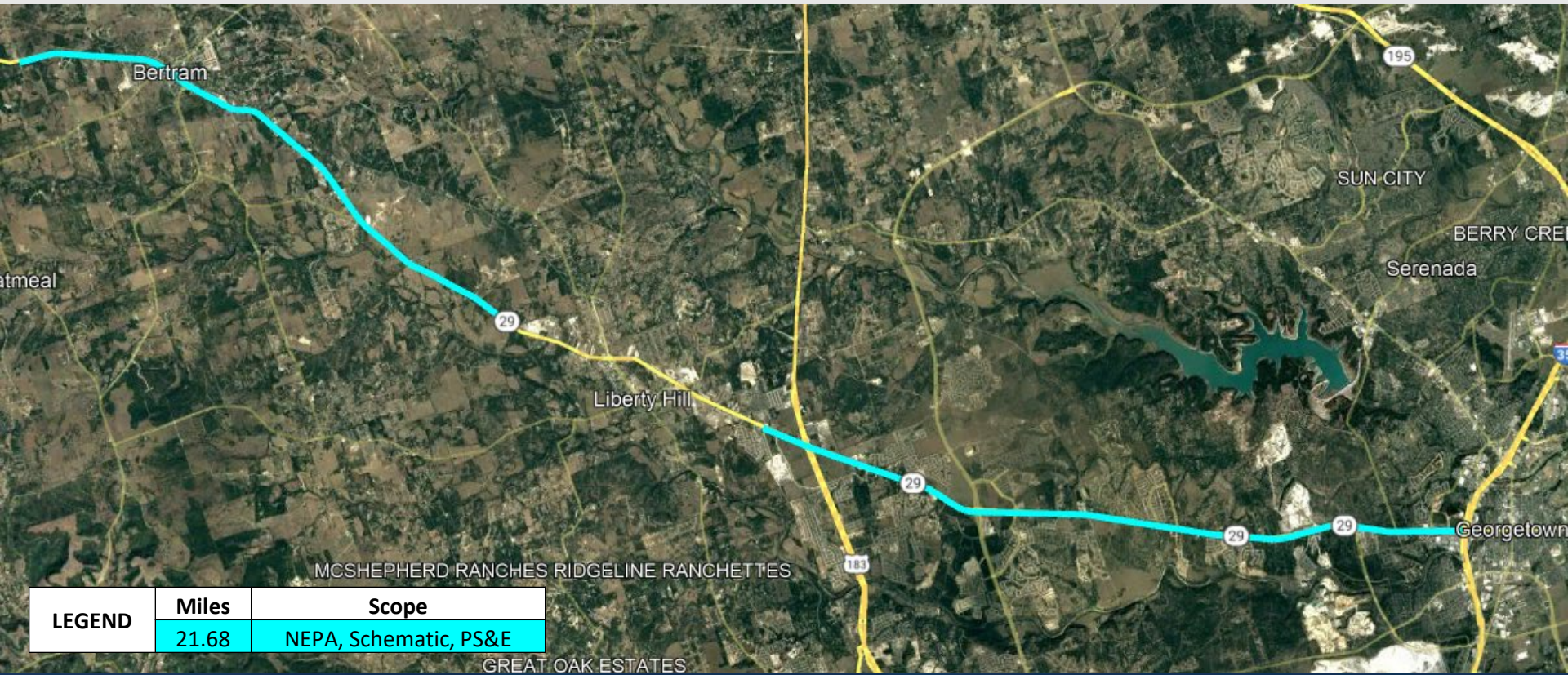
The purpose of this SD contract is to support the District study and develop the SH29 corridor from Bertram to Georgetown. Work will include NEPA documentation and environmental clearance, schematic design, public involvement, and PS&E development.





From CR258 to Old Highway 29 (CR 322) and From Stonewall Parkway to IH35

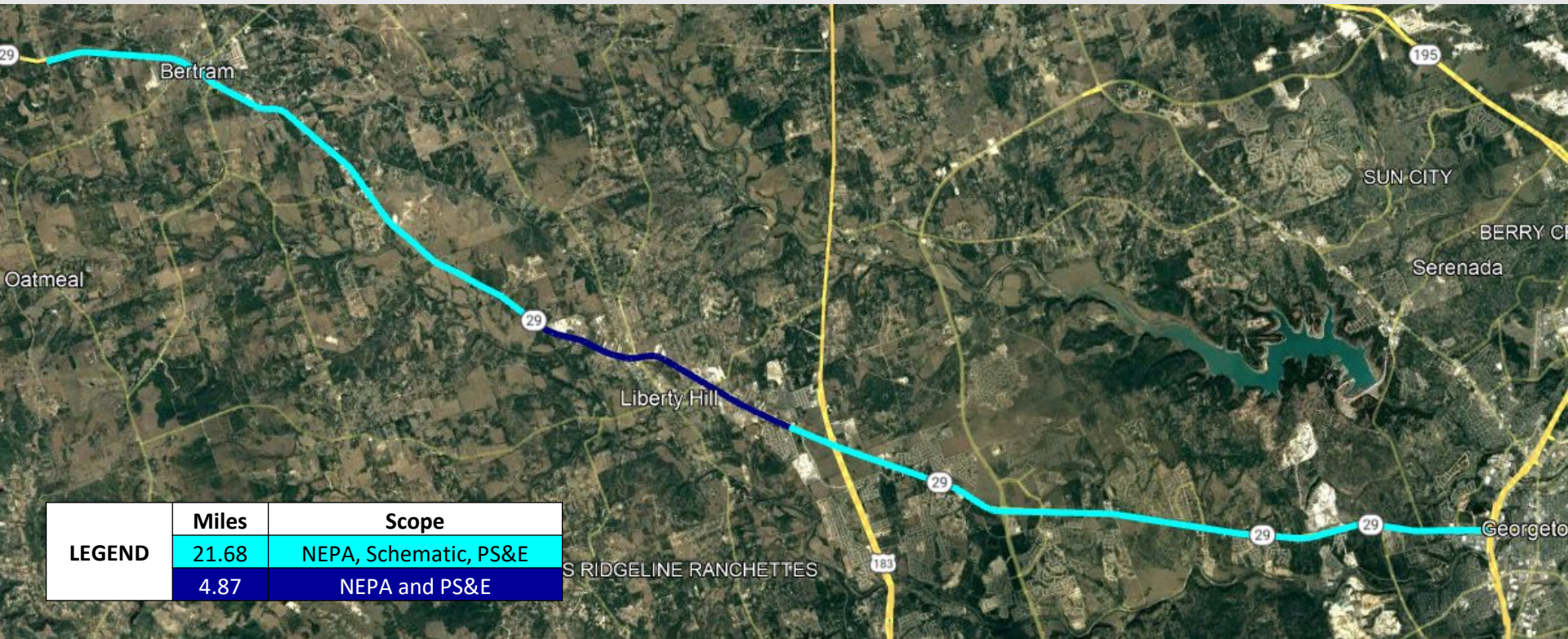
- Development of a design schematic
- Public Involvement and stakeholder engagement
- Value Engineering Study
- Traffic projections
- Subsurface utility engineering and coordination
- ROW mapping
- Development of a detailed, logical phasing plan to be used for PS&E development and construction.
- Etc





From CR258 to IH35

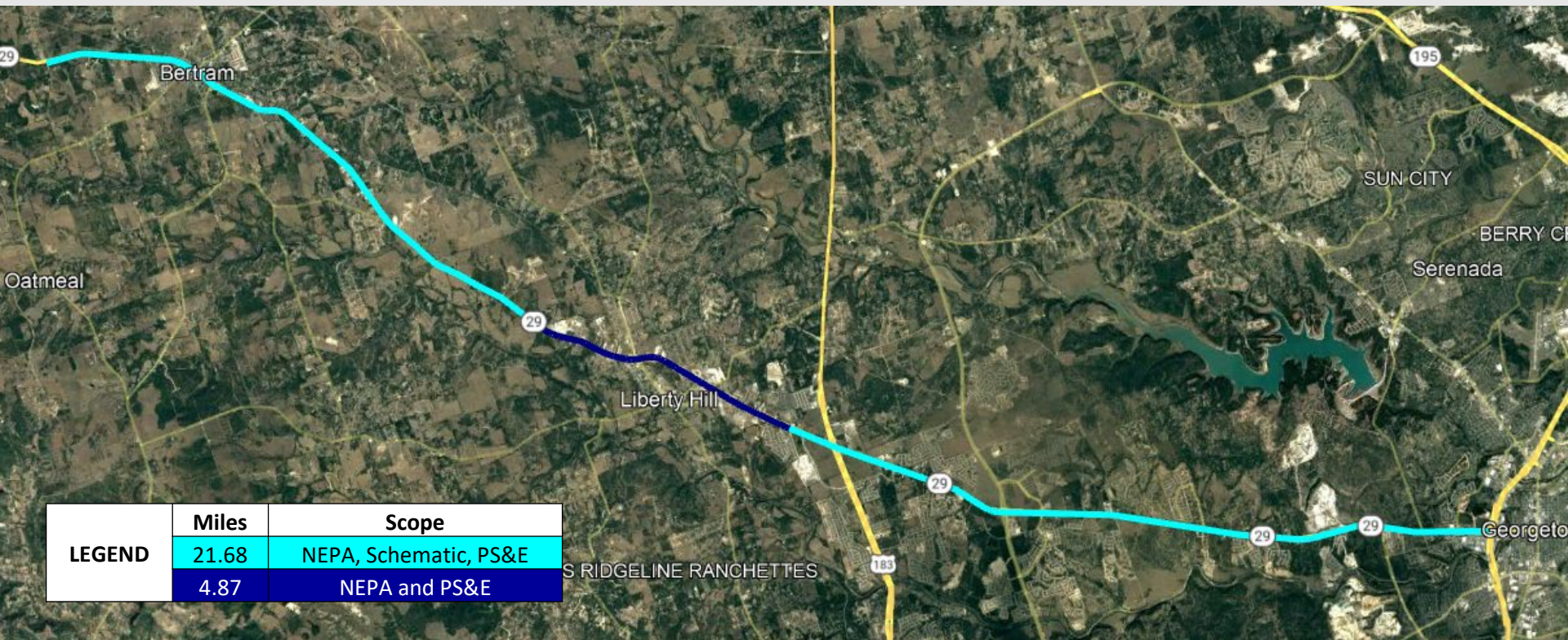
- Environmental studies and documentation in support of schematic work
- Environmental studies and documentation in support of access management studies
- Public Involvement activities
- Etc





Limits could include projects between Old Highway 29 (CR 322) to IH35

- Prepare plans, specifications, and estimates
- May include roadway design, bridge design, hydrologic and hydraulic design, traffic signal design
- Utility adjustment coordination
- Subsurface utility engineering
- Survey
- Geotechnical data collection and coordination
- ROW services
- Construction phase services
- Etc





1	Introduction	PEPS
2	Procurement Process	PEPS
3	Preclusions/Restrictions	PEPS
4	Solicitation Timeline (Tentative)	PEPS
5	Project Overview	Austin District
6	Next Steps/Q&A	PEPS, Austin District



- Meeting documents will be posted online:
TxDOT > Do Business > Eng/Arch/Surv
> Business Opportunities > Consultant
Information Meetings
- Submit questions to:
Todd Speck, P.E., CTCM
by 1:00 p.m., Friday, November 17
- Relevant questions and answers will
be posted by Tuesday, November 21